



Leffingwell Camp National Historic Landmark
Flaxman Island, Alaska

C.G. Mull

1971

State Historic Preservation Office-Alaska

Department of Natural Resources

Division of Parks and Outdoor Recreation

Office of History and Archeology

Pouch 7001

Anchorage, Alaska 99510

Samuel Panningona house with state historic
site sign



Leffingwell Camp National Historic
Landmark

Flaxman Island, Alaska

North Slope Borough

1975

State Historic Preservation Office-Alaska

Department of Natural Resources

Division of Parks and Outdoor Recreation

Office of History and Archeology

Pouch 7001

Anchorage, Alaska 99501

Aerial view of Leffingwell Camp, looking
south



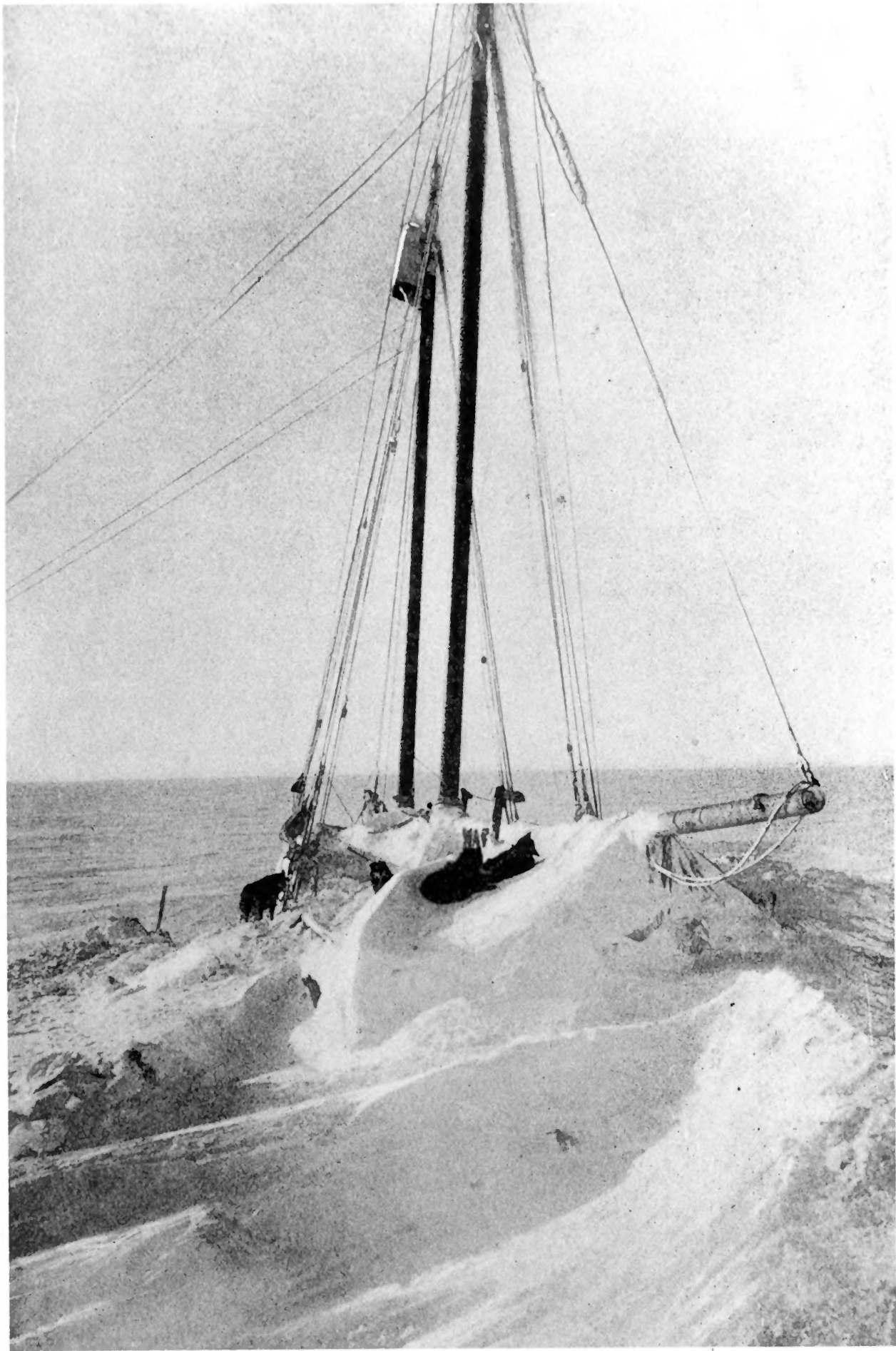
ERNEST DE K. LEFFINGWELL.

Leffingwell Camp National Historic
Landmark

Flaxman Island, Alaska

Mikkelsen 1909

Ernest de K. Leffingwell



Leffingwell Camp National Historic
Landmark

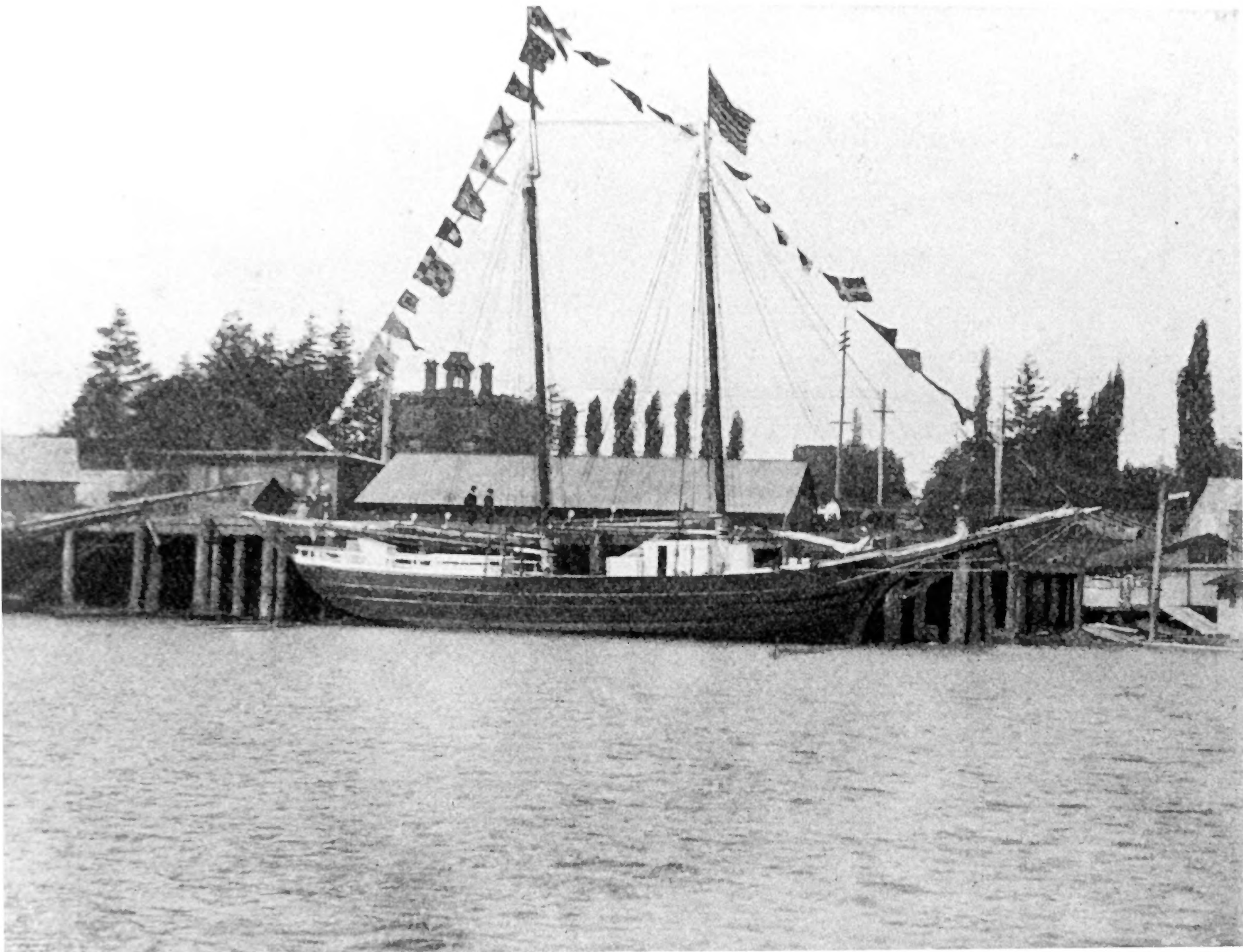
Flaxman Island, Alaska

Ejnar Mikkelsen

1907

Mikkelsen 1909

Duchess of Bedford trapped in ice pack
off Flaxman Island



Leffingwell Camp National Historic
Landmark

Flaxman Island, Alaska

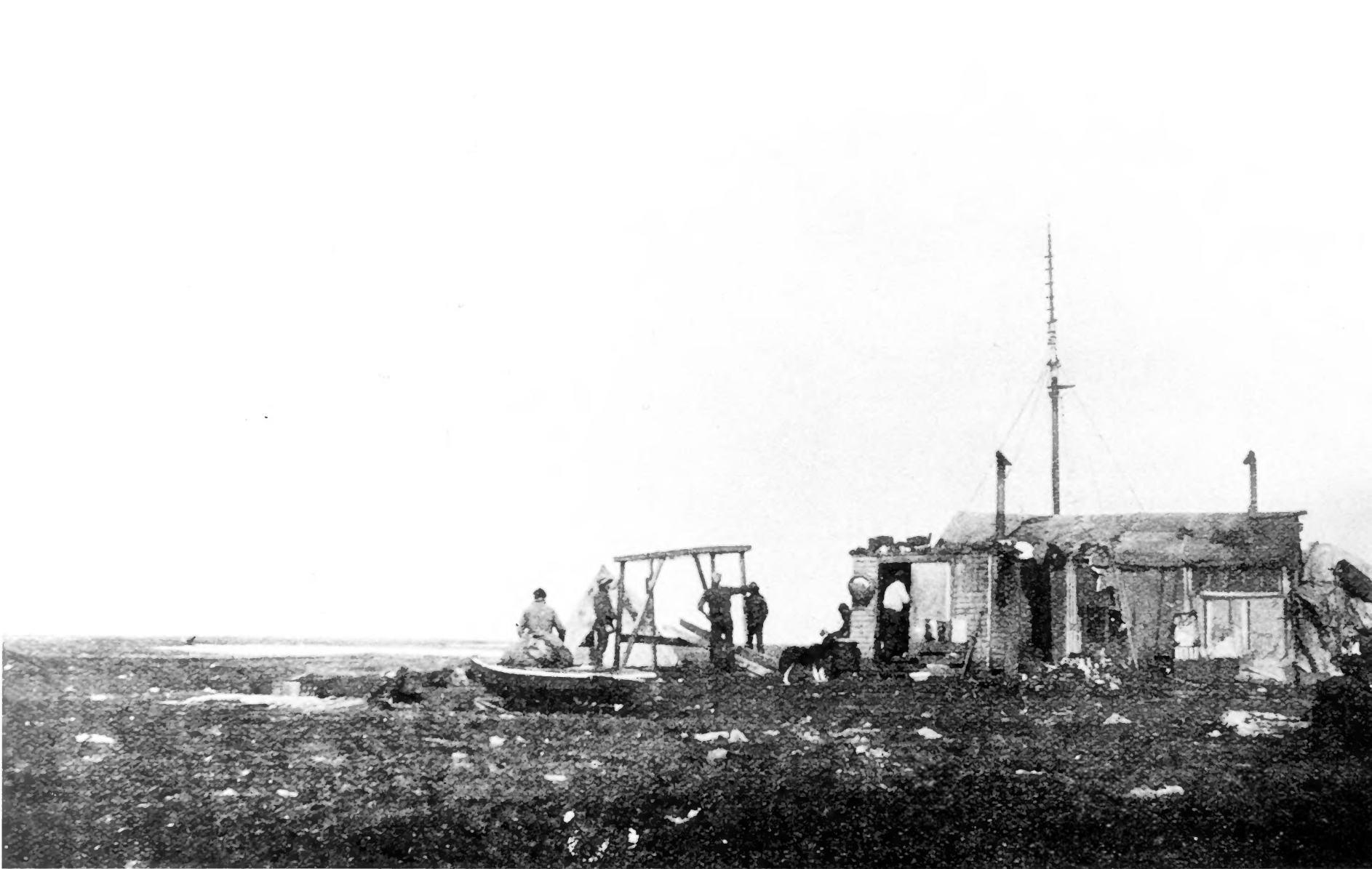
Ejnar Mikkelsen

1906

Mikkelsen 1909

Duchess of Bedford in Victoria, British
Columbia

Page 7



Leffingwell Camp National Historic
Landmark

Flaxman Island, Alaska

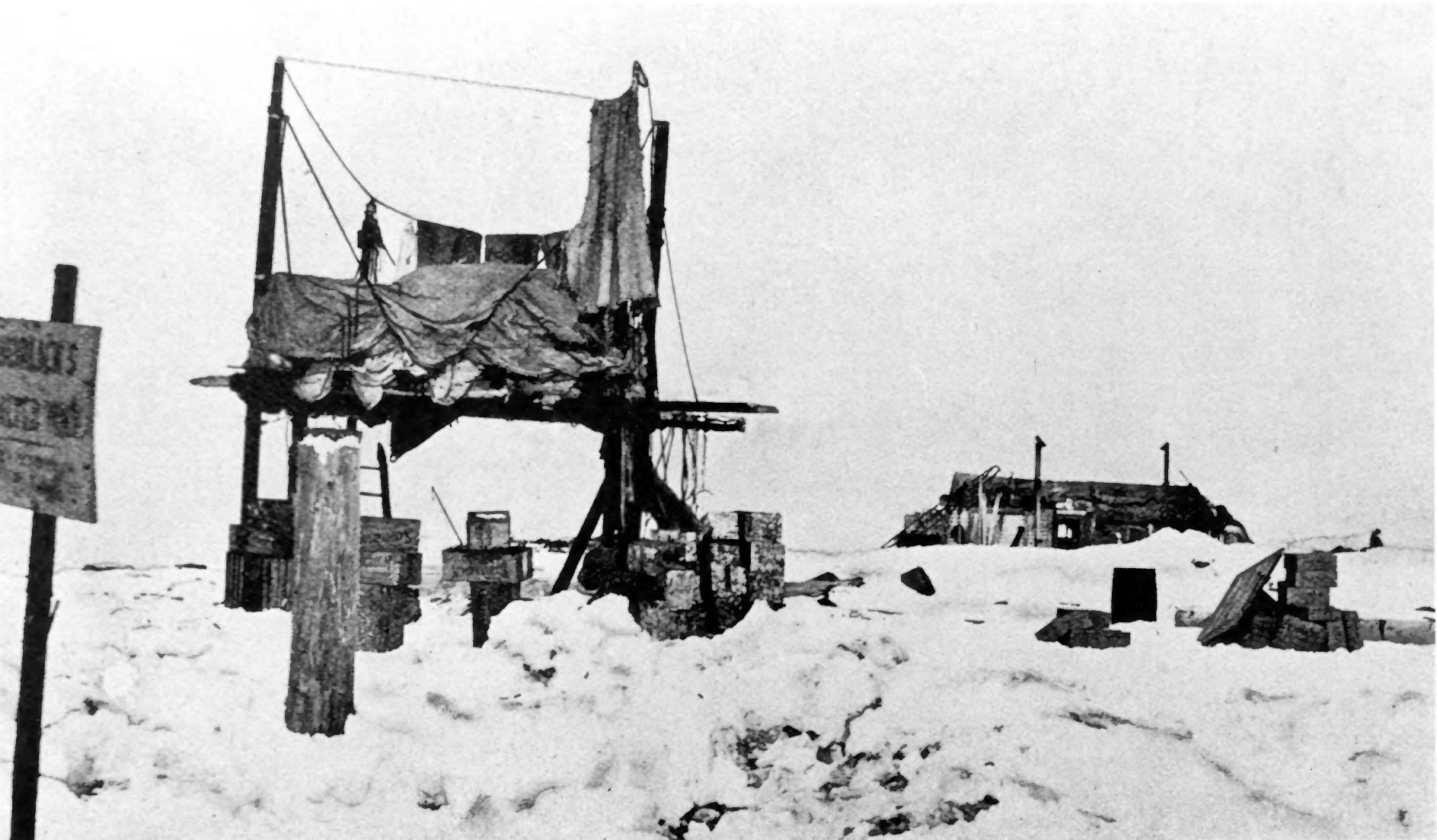
Ejnar Mikkelsen

1907

Mikkelsen 1909

Leffingwell Camp, looking south

Page 293



Leffingwell Camp National Historic

Leffingwell National Historic

Landmark

Flaxman Island, Alaska

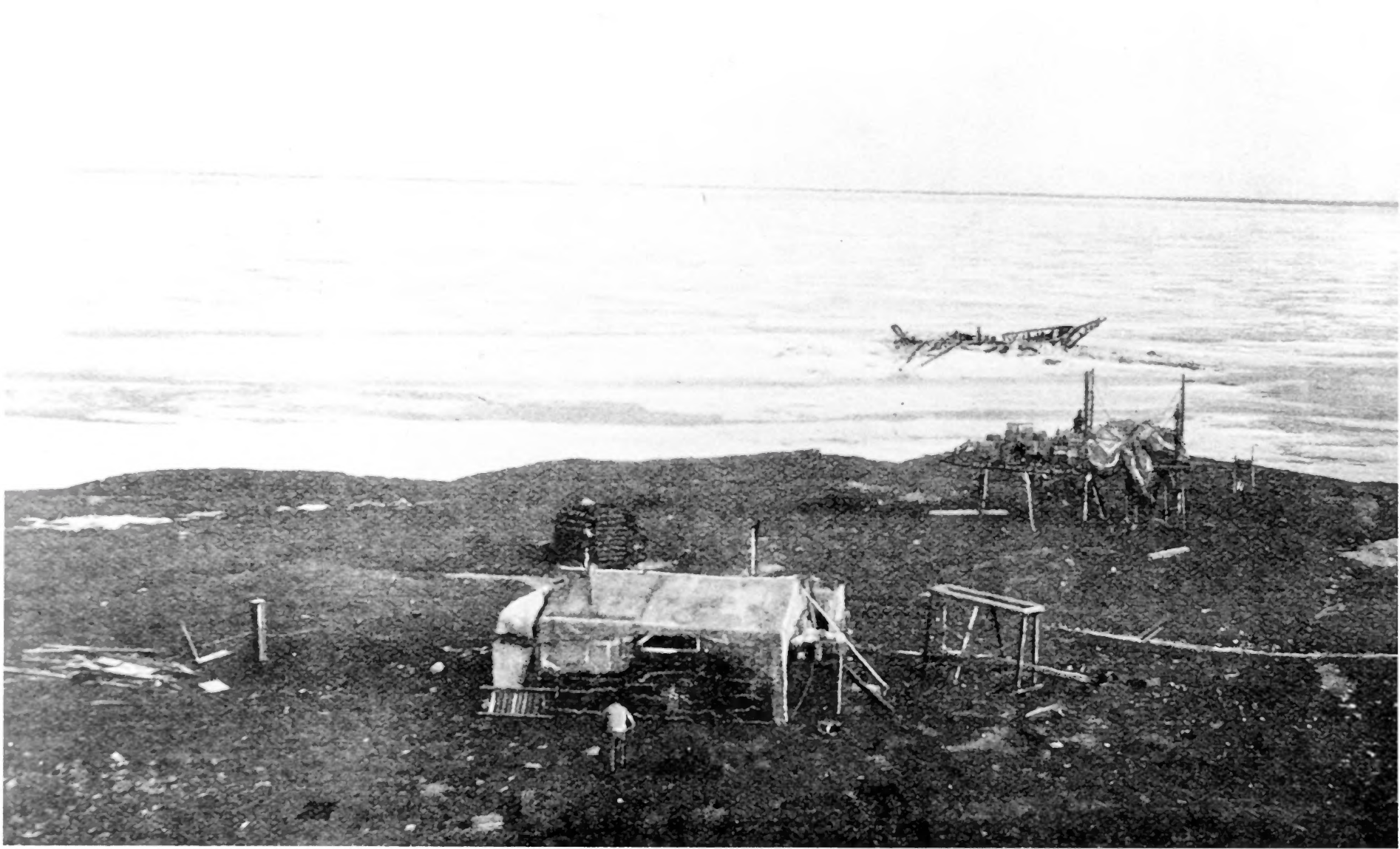
Ejnar Mikkelsen

1907

Mikkelsen 1909

Leffingwell Camp, house and cache

Page 279



Leffingwell Camp National Historic
Landmark

Flaxman Island, Alaska

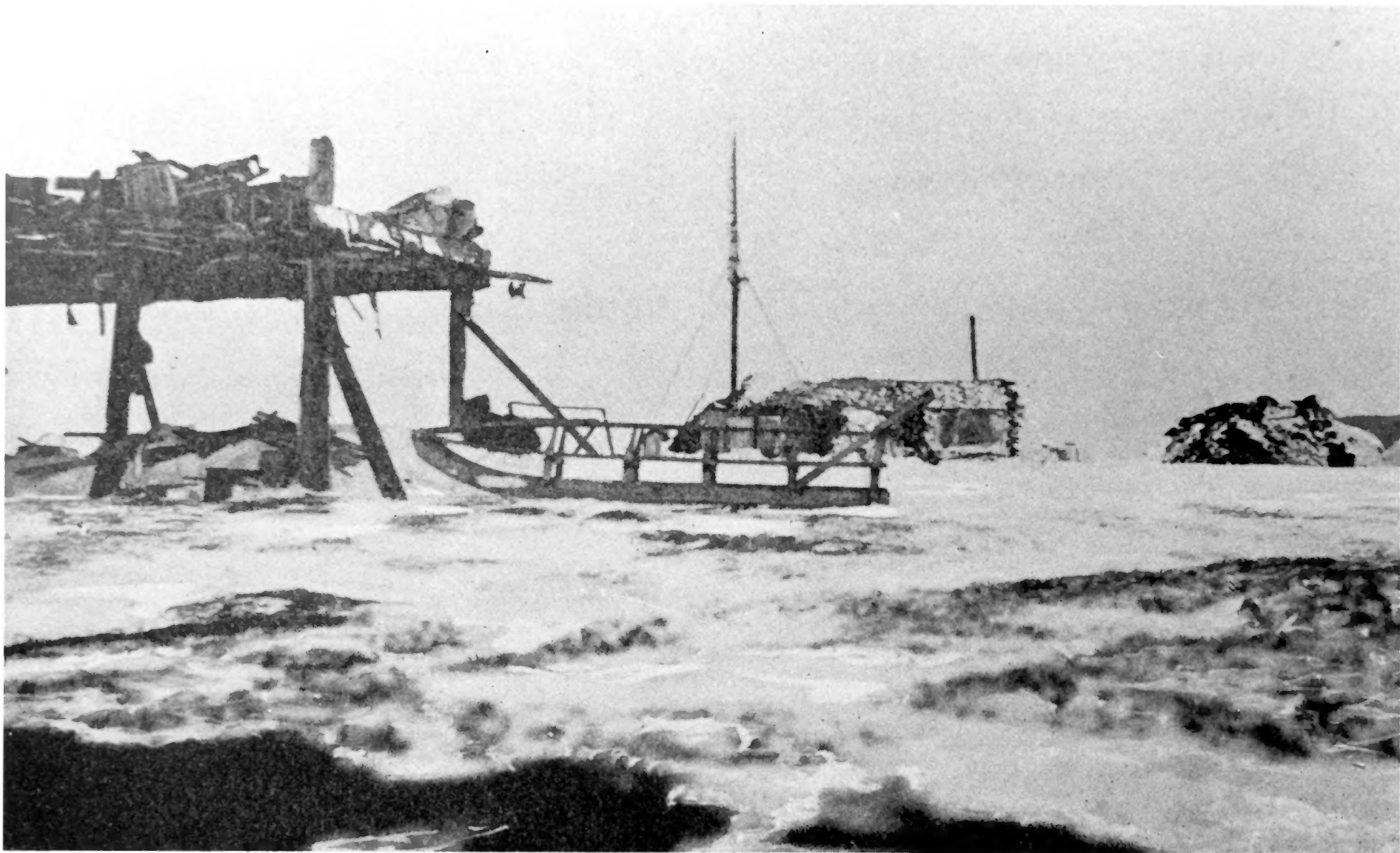
Ejnar Mikkelsen

1907

Mikkelsen 1909

Aerial view of Leffingwell Camp from
the Duchess of Bedford mast behind
Leffingwell's house, Duchesss of
Bedford in background, looking south

Page 305



Leffingwell Camp National Historic
Landmark

Flaxman Island, Alaska

Ejnar Mikkelsen

1907

Mikkelesen 1909

Leffingwell Camp house and cache

Page 334



Leffingwell Camp National Historic
Landmark

Flaxman Island, Alaska

Ejnar Mikkelsen

1907

Mikkelsen 1909

Leffingwell's house being banked with sod

Page 291



Leffingwell Camp National Historic Landmark
Flaxman Island, Alaska

North Slope Borough

1975

State Historic Preservation Office-Alaska

Department of Natural Resources

Division of Parks and Recreation

Office of History and Archeology

Pouch 7001

Anchorage, Alaska 99510

Aerial view of Flaxman Island, looking west



Leffingwell Camp National Historic
Landmark

Flaxman Island, Alaska

North Slope Borough

1975 North Slope Borough

State Historic Preservation Office-Alaska

Dept. of Natural Resources

Division of Parks and Outdoor Recreation

Office of History and Archeology

Pouch 7001

Anchorage, Alaska 99510

Aerial view of Flaxman Island, looking
east