



UNITED STATES DEPARTMENT OF THE INTERIOR
NATIONAL PARK SERVICE

NATIONAL REGISTER OF HISTORIC PLACES

PROPERTY PHOTOGRAPH FORM

(Type all entries - attach to or enclose with photograph)

STATE Virginia	
COUNTY Fluvanna	
FOR NPS USE ONLY	
ENTRY NUMBER 69-11.45-0062	DATE 1/2/69

SEE INSTRUCTIONS

1. NAME

COMMON: Bremo
AND/OR HISTORIC: Bremo

2. LOCATION

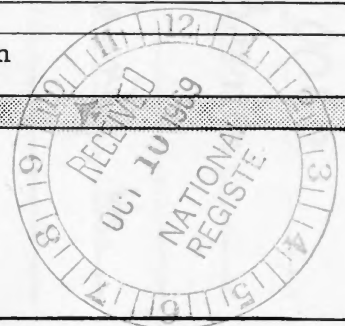
STREET AND NUMBER: .3 mi. N of James River, 2.4 mi. W of Rt. 15, .9 mi. N of intersection of Rt. 15 and Rt. 656.
CITY OR TOWN:
STATE: Virginia CODE 45 COUNTY: Fluvanna CODE 065

3. PHOTO REFERENCE

PHOTO CREDIT: Virginia Historic Landmarks Commission
DATE OF PHOTO: 1967
NEGATIVE FILED AT: Virginia Historic Landmarks Commission
Richmond, Virginia

4. IDENTIFICATION

DESCRIBE VIEW, DIRECTION, ETC.
View of Lower Bremo from the Southeast.





Lower Brems, Fluvanna Co., Virginia

NPS Photo 1971



Hall arcade, Breemo Recess, Fluvanna Co., Virginia

NPS Photo 1971











Stone Barn, Brems, Fluvanna Co., Virginia

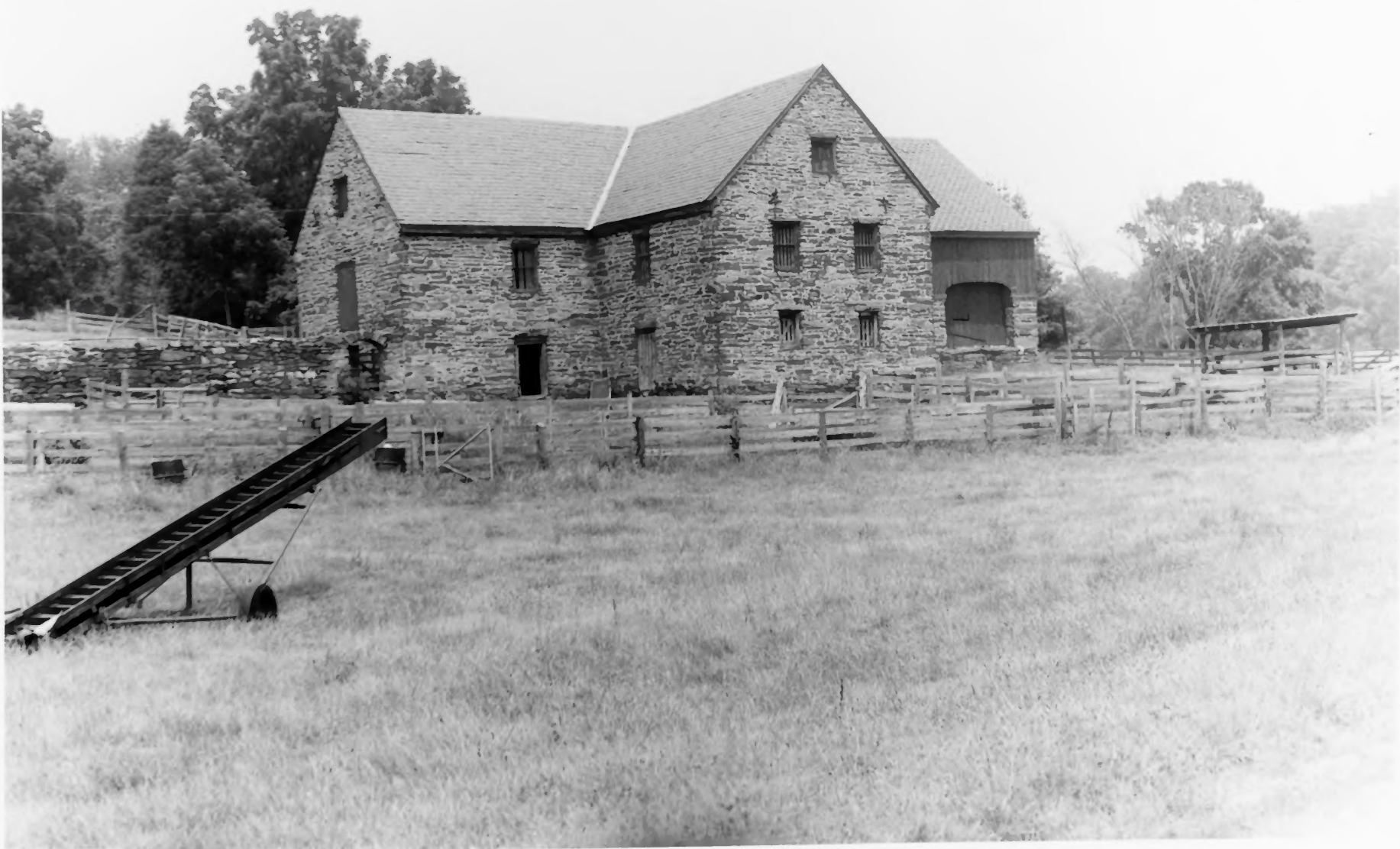
NPS Photo 1971



BREMO HISTORIC DISTRICT
FLUVANNA COUNTY, VIRGINIA

NHL

HABS



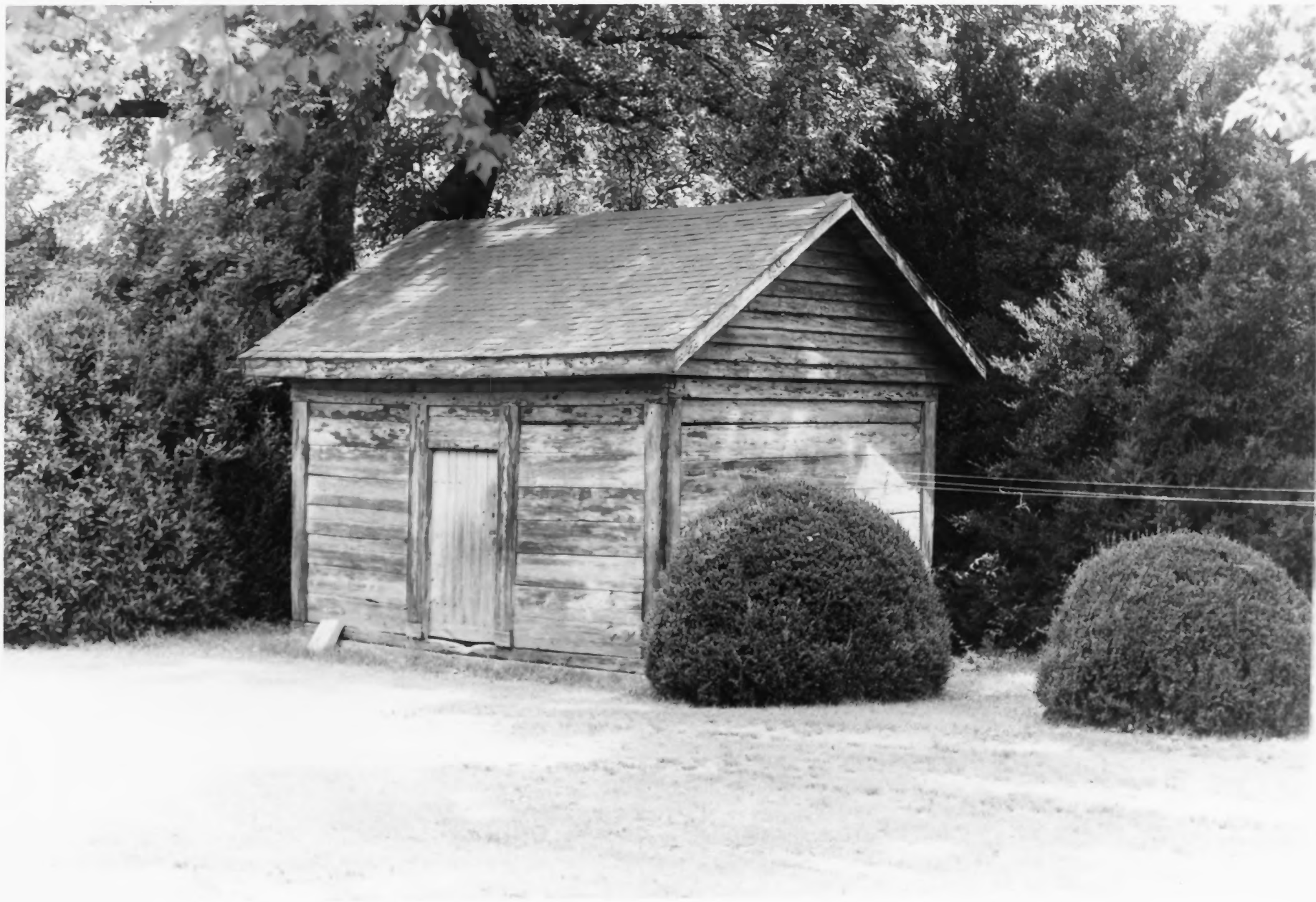
Barn, Lower Bremo, Fluvanna Co., Virginia

NPS Photo 1971











Temperance Fountain, Bremond, Fluvanna Co., Virginia

NPS Photo 1971