



30 feet

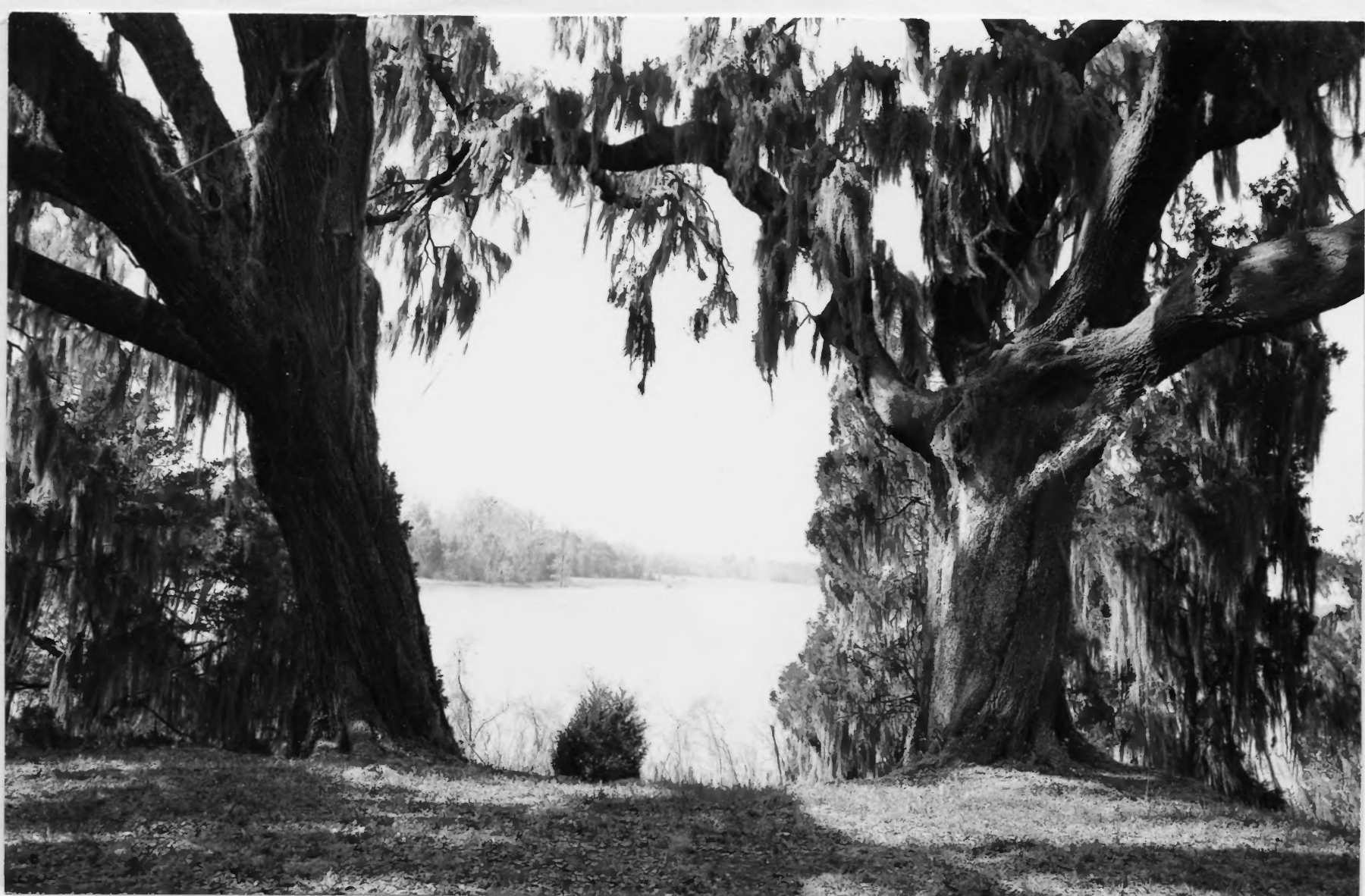
Broughton (Thomas) Plantation,
Mulberry, Moncks Corner
vicinity, S. C.

Mulberry Plantations



Mulberry Plantation House, Berkeley County, South Carolina

NPS Photo 1969



THE MULBERRY, South Carolina - The north rice field, seen from high ground near the mansion. The Mulberry is typical of the river rice plantations which brought such wealth to the colony in the eighteenth century.

48589

March 20, 1958

National Park Service photograph