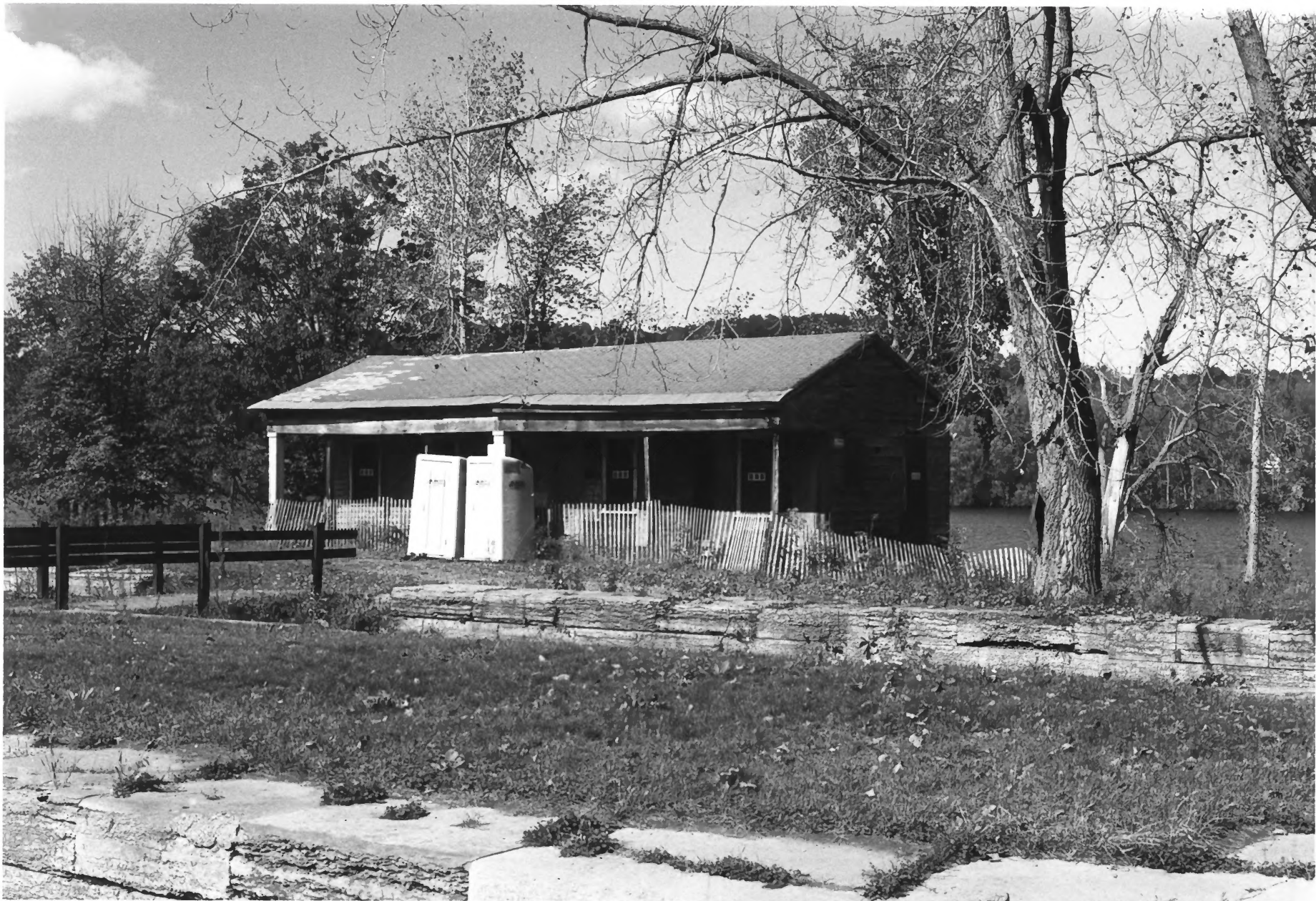


Erie Canal National Historic Landmark
Glen and Florida, Montgomery Co., NY
Credit: Charles H. Ashton, Heritage
Studies, Inc., Oct. 1983. Negative at
MARO, NPS. View W into Yankee Hill Lock, N
side. Grocery (#1) at right. Photo 1 of
21.



Erie Canal National Historic Landmark
Glen and Florida, Montgomery Co., NY
Credit: Charles H. Ashton, Heritage
Studies, Inc., Oct. 1983. Negative at
MARO, NPS. View N of Lock Grocery (#1);
main house stood to left. Side by side
locks in foreground. Photo 2 of 21.



Erie Canal National Historic Landmark
Glen and Florida, Montgomery Co., NY
Credit: Charles H. Ashton, Heritage
Studies, Inc., Oct. 1983. Negative at
MARO, NPS. View SW across canal, just W of
Yankee Hill Lock. House is outside
boundary. Photo 3 of 21.



Erie Canal National Historic Landmark
Glen and Florida, Montgomery Co., NY
Credit: Charles H. Ashton, Heritage
Studies, Inc., Oct. 1983. Negative at
MARO, NPS. View SW across canal showing
rear of Wemp house (#2). Trees to right
are in basin site. Photo 4 of 21.



Erie Canal National Historic Landmark
Glen and Florida, Montgomery Co., NY
Credit: Charles H. Ashton, Heritage
Studies, Inc., Oct. 1983. Negative at
MARO, NPS. View N from railroad of Wemp
barns (#s 3,4). Canal out of view to rear.
Photo 5 of 21.



Erie Canal National Historic Landmark
Glen and Florida, Montgomery Co., NY
Credit: Charles H. Ashton, Heritage
Studies, Inc., Oct. 1983. Negative at
MARO, NPS. View SE across Empire Lock.
Photo 6 of 21.



Erie Canal National Historic Landmark
Glen and Florida, Montgomery Co., NY
Credit: Charles H. Ashton, Heritage
Studies, Inc., Oct. 1983. Negative at
MARO, NPS. View E on 1841 alignment
showing typical canal scene. Ditch at
right, towpath on berm to left. Photo 7 of
21.



Erie Canal National Historic Landmark
Glen and Florida, Montgomery Co.; NY
Credit: Charles H. Ashton, Heritage
Studies, Inc., Oct. 1983. Negative at
MARO, NPS. View NW from Railroad Street,
at East Guard Lock.
L-R: Quiri house (#6), Enders house (#5).
Photo 8 of 21.



Erie Canal National Historic Landmark
Glen and Florida, Montgomery Co., NY
Credit: Charles H. Ashton, Heritage
Studies, Inc., Oct. 1983. Negative at
MARO, NPS. View E into East Guard Lock.
Quiri house (#6) out of view to L. Photo 9
of 21.



Erie Canal National Historic Landmark
Glen and Florida, Montgomery Co., NY
Credit: Charles H. Ashton, Heritage
Studies, Inc., Oct. 1983. View NE of
Enders house (#5). Original canal is
behind house, not visible. Photo 10 of 21.



Erie Canal National Historic Landmark
Glen and Florida, Montgomery Co., NY
Credit: Charles H. Ashton, Heritage
Studies, Inc., Oct. 1983. Negative at
MARO, NPS. View NE of Quiri house (#6).
Photo 11 of 21.



Erie Canal National Historic Landmark
Glen and Florida, Montgomery Co., NY
Credit: Charles H. Ashton, Heritage
Studies, Inc., Oct. 1983. View SW of
outbuilding (#7). Photo 12 of 21.



Erie Canal National Historic Landmark

Glen and Florida, Montgomery Co., NY

Credit: Charles H. Ashton, Heritage

Studies, Inc., Oct. 1983. Negative at

MARO, NPS. View E of site of Lock 30.

L-R: Maintenance garage (#8), Post Office

(#9).

Photo 13 of 21.



Erie Canal National Historic Landmark
Glen and Florida, Montgomery Co., NY
Credit: Charles H. Ashton, Heritage
Studies, Inc., Oct. 1983. Negative at
MARO, NPS. View SE of former school (#10).
Photo 14 of 21.



Erie Canal National Historic Landmark
Glen and Florida, Montgomery Co., NY
Credit: Charles H. Ashton, Heritage
Studies, Inc., Oct. 1983. Negative at
MARO, NPS. View SE of #11. Photo 15 of
21.



Erie Canal National Historic Landmark
Glen and Florida, Montgomery Co., NY
Credit: Charles H. Ashton, Heritage
Studies, Inc., Oct. 1983. Negative at
MARO, NPS. View SW of (L-R) #s 13, 12, and
11. Original canal bed out of view to
rear. Photo 16 of 21.



Erie Canal National Historic Landmark
Glen and Florida, Montgomery Co., NY
Credit: Charles H. Ashton, Heritage
Studies, Inc., Oct. 1983. Negative at
MARO, NPS. View SW of #14. Canal bed
marked by trees at L. Photo 17 of 21.



Erie Canal National Historic Landmark
Glen and Florida, Montgomery Co., NY
Credit: Charles H. Ashton, Heritage
Studies, Inc., Oct. 1983. Negative at
MARO, NPS. View E across Schoharie Creek
of aqueduct. Photo 18 of 21.



Erie Canal National Historic Landmark
Glen and Florida, Montgomery Co., NY
Credit: Charles H. Ashton, Heritage
Studies, Inc., Oct. 1983. Negative at
MARO, NPS. Detail of aqueduct, W end.
Photo 19 of 21.



Erie Canal National Historic Landmark
Glen and Florida, Montgomery Co., NY
Credit: Charles H. Ashton, Heritage
Studies, Inc., Oct. 1983. Negative at
MARO, NPS. View E across top of aqueduct;
towpath at L, trunk was at R. Photo 20 of
21.



Erie Canal National Historic Landmark
Glen and Florida, Montgomery Co., NY
Credit: Charles H. Ashton; Heritage
Studies, Inc., Oct. 1983. Negative at
MARO, NPS. View W from W end of aqueduct;
Hartley Lane visible at rear. Photo 21 of
21.



**Erie Canal, Fort Hunter, New York.
This lock dates from the original
canal.**

October, 1958 National Park Service Photograph



Erie Canal, Fort Hunter, New York.
The picture shows some of the original
waterway.

March, 1958 National Park Service Photograph



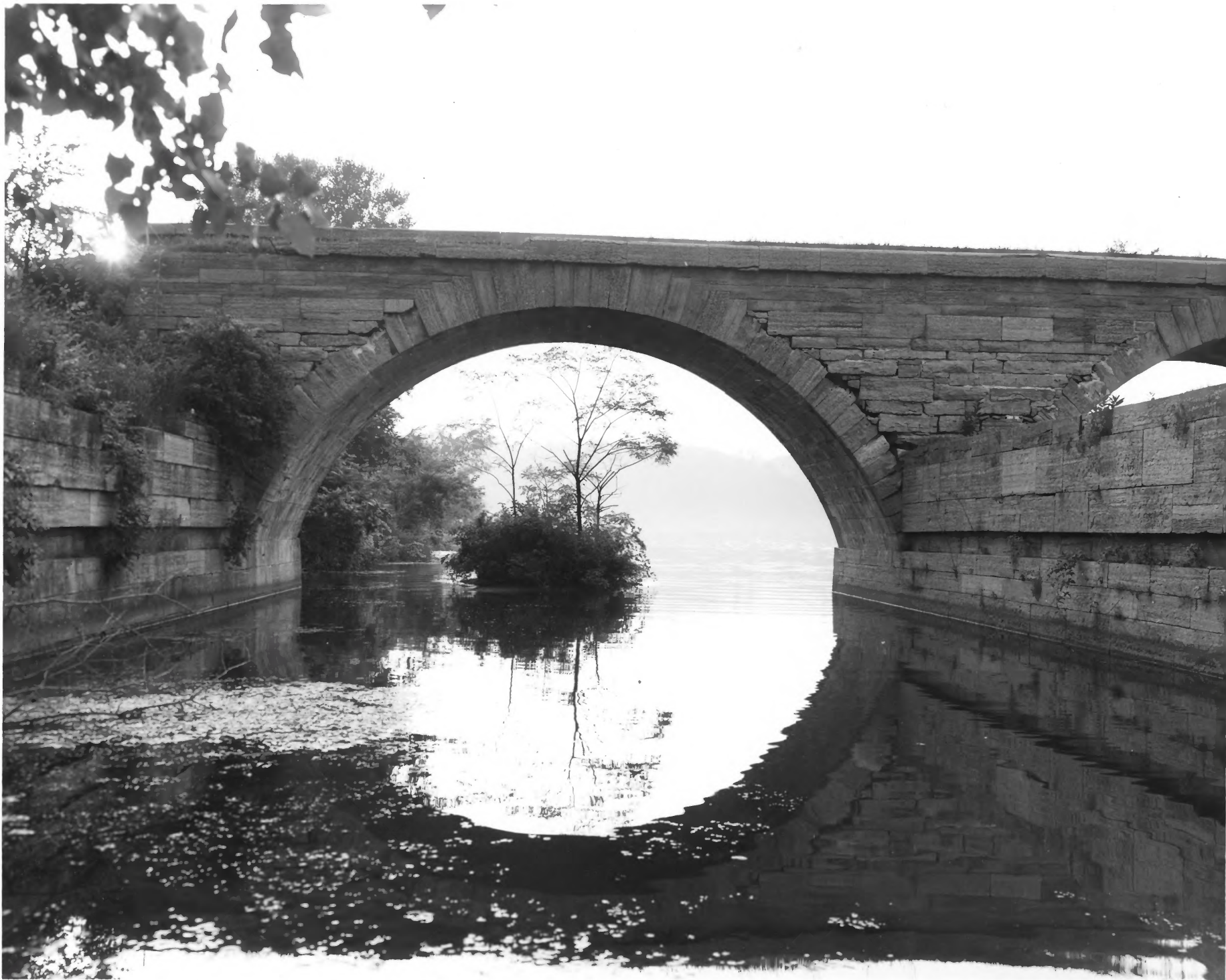
PROPERTY OF THE NATIONAL REGISTER

NPS Number _____

Title: Erie Canal - NHL

Montgomery County, N.Y.

Loc. Schalowic Aqueduct



PROPERTY OF THE NATIONAL REGISTER

NPS Number 10/9/60

Title: Erie Canal - N#1

Montgomery County, NY

Loc. Scholastic Aqueduct





1975

Erie Canal

Lock Grocery at Yankee Hill: west end
and south (front) facade.



1975

Erie Canal

Yankee Hill lock, facing east



1975

Ernie Campbell

1970 Lock at Fort Hunter facing east



Scholarie

Diquodot

Fin e Canada

1925

Extending

east

from west

bank of

Scholarie

Creek,