



WATERVLIET ARSENAL NATIONAL HISTORIC LANDMARK

Watervliet, NY

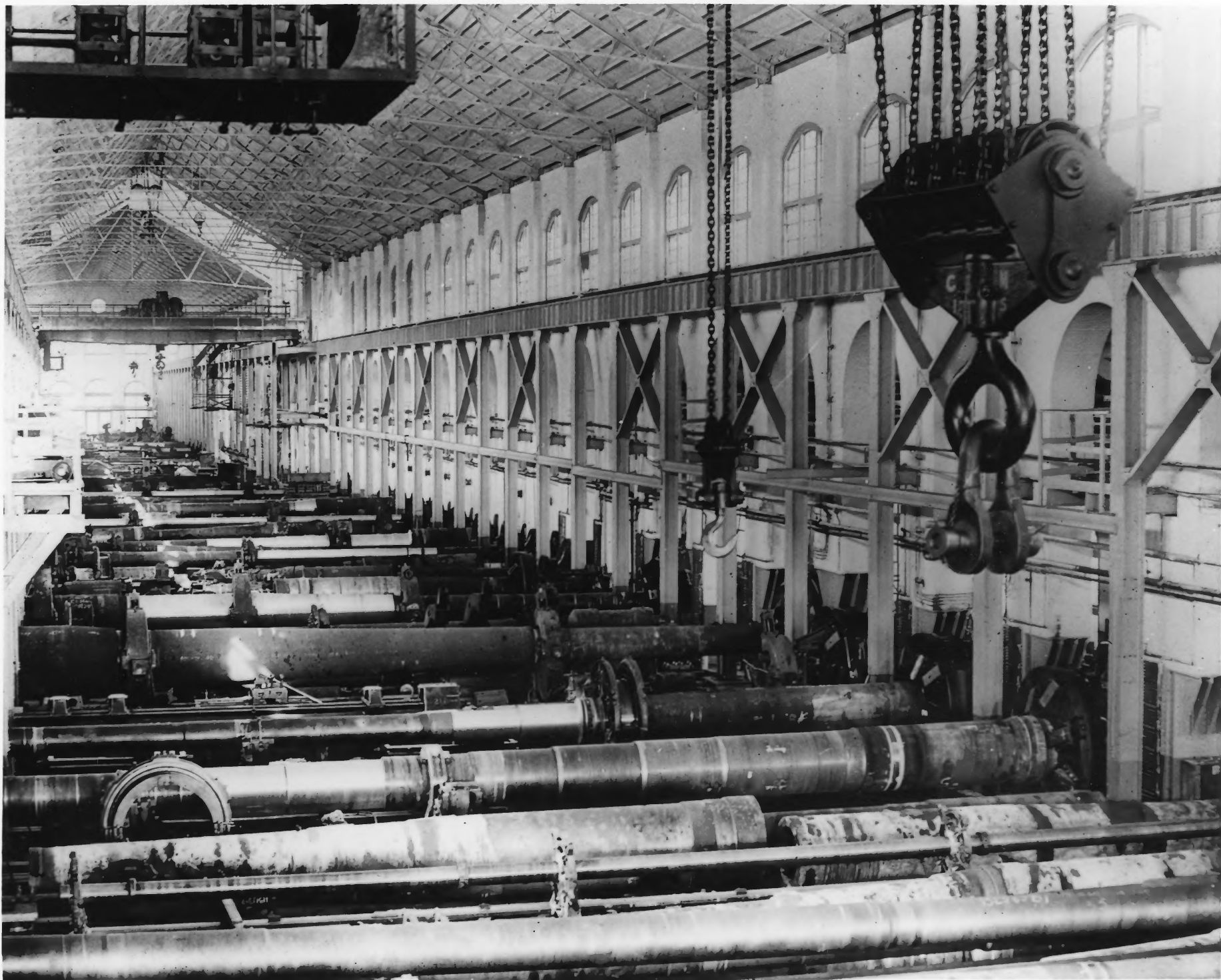
Credit: John C. Kacharian, Watervliet Arsenal

Negative at Watervliet Arsenal

Erre Canal, showing wall; view looking southeast

Historical photograph, c. 1920

Photo 1 of 21



WATERVLIET ARSENAL NATIONAL HISTORIC LANDMARK

Watervliet, NY

Credit: John C. Kacharian, Watervliet Arsenal

Negative at Watervliet Arsenal

Bldg. 110, Big Gun Shop, Interior

Historical photograph, 1943.

Photo 2 of 21



WATERVLIET ARSENAL NATIONAL HISTORIC LANDMARK

Watervliet, NY

Credit: John C. Kacharian, Watervliet Arsenal, 1970

Negative at Watervliet Arsenal

Bldg. 41, Officers' Club [Orig. Powder Lab]

Photo 3 of 21



WATERVLIET ARSENAL NATIONAL HISTORIC LANDMARK
Waterwich, NY

Credit: John C. Kachvator, Waterwich Arsenal, 1984

Negative at Waterwich Arsenal

Roll 15, view looking southwest

Photo 4 of 21



WATERVLIET ARSENAL NATIONAL HISTORIC LANDMARK

Watervliet, NY

Credit: John C. Racharian, Watervliet Arsenal, 1984

Negative at Watervliet Arsenal

Bldg. 135, view looking southeast

Photo 5 of 21



17

WATERVLIET ARSENAL NATIONAL HISTORIC LANDMARK

Watervliet, NY

Credit: John C. Kacharian, Watervliet Arsenal, 1984.

Negative at Watervliet Arsenal

Bldg. 17, view looking north

Photo 6 of 21



WATERVLIET ARSENAL NATIONAL HISTORIC LANDMARK

Watervliet, NY

Credit: John C. Kacharian, Watervliet Arsenal, 1984

Negative at Watervliet Arsenal

Bldg. 38, view looking northeast

Photo 7 of 21



WATERVLIET ARSENAL NATIONAL HISTORIC LANDMARK

Watervliet, NY

Credit: John C. Kacharian, Watervliet Arsenal, 1984.

Negative at Watervliet Arsenal

Bldg. 110, Big Gun Shop, view looking south

Photo 8 of 21



WATERVLIET ARSENAL NATIONAL HISTORIC LANDMARK

Water vliet, NY

Credit: John C. Kacharian, Watervliet Arsenal. 1984.

Negative at Watervliet Arsenal

Bldgs. 3, 4, 6; Quarters, view looking north

Photo 9 of 21



WATERVLIET ARSENAL NATIONAL HISTORIC LANDMARK

Watervliet, NY

Credit: John C. Kacharian, Watervliet Arsenal, 1984

Negative at Watervliet Arsenal

Bldg. 10, Campbell Hall, view looking northwest

Photo 10 of 21



WATERVLIET ARSENAL NATIONAL HISTORIC LANDMARK

Watervliet, NY

Credit: John C. Kacharian, Watervliet Arsenal, 1984

Negative at Watervliet Arsenal

Bldg. 24, former Barracks, view looking northwest

Photo 11 of 21



WATERVLIET ARSENAL NATIONAL HISTORIC LANDMARK

Watervliet, NY

Credit: John C. Kacharian, Watervliet Arsenal, 1984.

Negative at Watervliet Arsenal

Bldg. 129, Powder magazine, view looking west

Photo 12 of 21



WATERVLIET ARSENAL NATIONAL HISTORIC LANDMARK

Watervliet, NY

Credit: John C. Kacharian, Watervliet Arsenal, 1984

Negative at Watervliet Arsenal

Bldg. 1, Quarters One, view looking northeast

Photo 13 of 21



WATERVLIET ARSENAL NATIONAL HISTORIC LANDMARK

Watervliet, NY

Credit: Robert W. Craig, Heritage Studies, September 1985

Negative at MARO, NPS

Bldg. 40, detail showing facade windows, view looking west

Photo 14 of 21



WATERVLIET ARSENAL NATIONAL HISTORIC LANDMARK

Watervliet, NY

Credit: Robert W. Craig, Heritage Studies, September 1985

Negative at MARO, NPS

Bldg. 40, detail showing rear windows blocked down,
view looking northeast

Photo 15 of 21



WATERVLIET ARSENAL NATIONAL HISTORIC LANDMARK

Watervliet, NY

Credit: Robert W. Craig, Heritage Studies, September 1985

Negative at MARO, NPS

Example of stone and chain-link boundary fencing, view looking southeast

Photo 16 of 21



WATERVLIET ARSENAL NATIONAL HISTORIC LANDMARK

Water vliet, NY

Credit: Robert W. Craig, Heritage Studies, September 1985

Negative at MARO, NPS

View of golf course and Erie Canal wall, view looking west

Photo 17 of 21



WATERVLIET ARSENAL NATIONAL HISTORIC LANDMARK

Water vliet, NY

Credit: Robert W. Craig, Heritage Studies, September 1985

Negative at MARO, NPS

Ornamental fountain, view looking northwest

Photo 18 of 21



WATERVLIET ARSENAL NATIONAL HISTORIC LANDMARK

Water vliet, NY

Credit: Robert W. Craig, Heritage Studies, September 1985

Negative at MARO, NPS

Flagpole, ordnance, and howitzer; view looking north

Photo 19 of 21



WATERVLIET ARSENAL NATIONAL HISTORIC LANDMARK

Watervliet, NY

Credit: Robert W. Craig, Heritage Studies, September 1985

Negative at MARO, NPS

Route 155 overpass and "Siberia" behind, view looking northwest

Photo 20 of 21



WATERVLIET ARSENAL NATIONAL HISTORIC LANDMARK

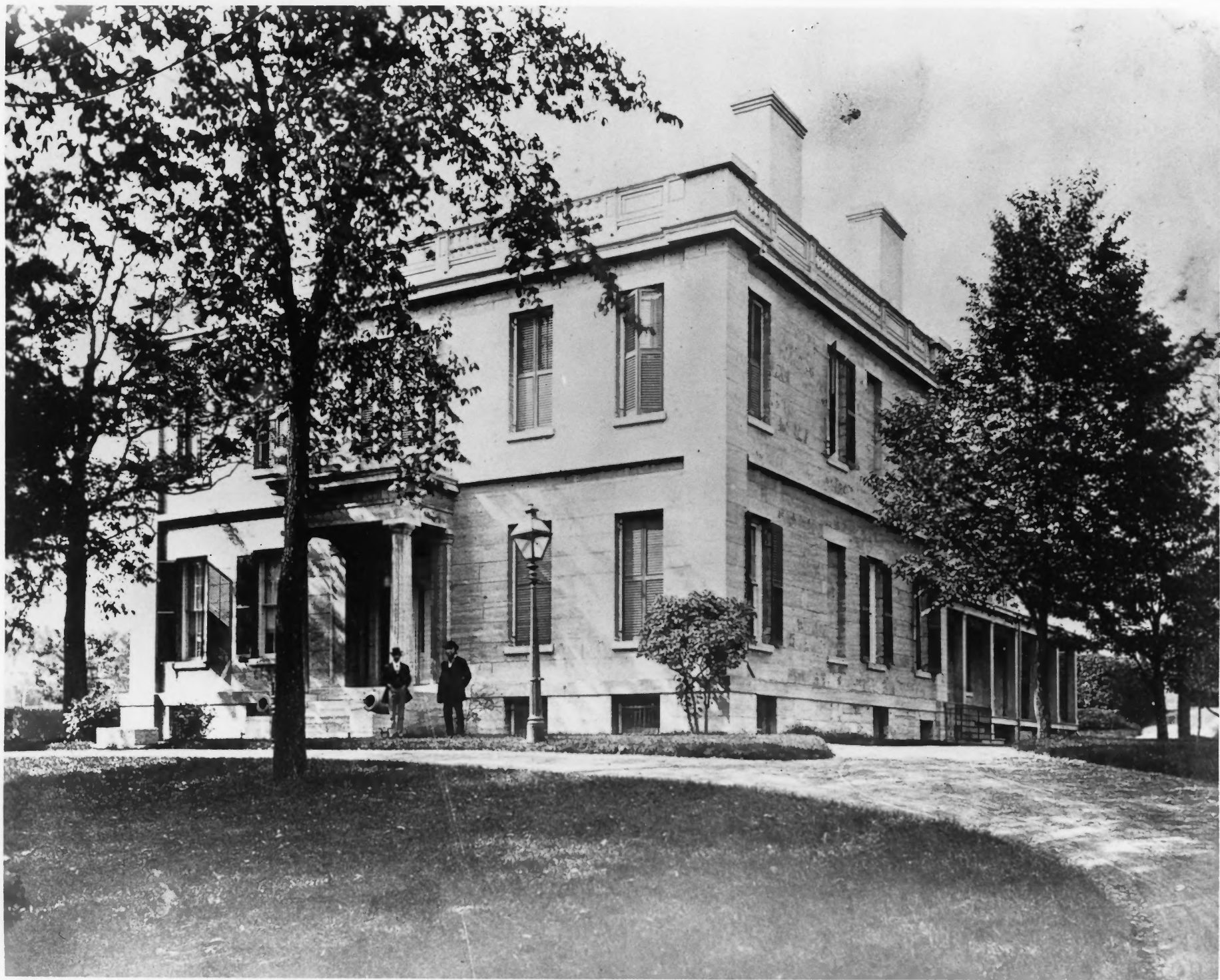
Watervliet, NY

Credit: Robert W. Craig, Heritage Studies, September 1985

Negative at MARO, NPS

View in "Siberia" of waste handling; view looking north

Photo 21 of 21



Watervliet Arsenal

Stone Officer's Quarters (1770)

U.S. Army Photo



1445 C dup

Waterloo Arsenal

Enlisted Men's Barracks 1875

South and East Facades