



Fort Robinson and Red Cloud Agency

Crawford, Nebraska, Dawes County

Stephen Lissandrello, 8/75

Historic Sites Survey, NPS

Facing north to restored 1887 Officer's  
Quarters (Bldg. 96).



Fort Robinson and Red Cloud Agency

Crawford, Nebraska, Dawes County

Stephen Lissandrello, 8/75

Historic Sites Survey, NPS

Facing north to 1887 Officer's Quarters  
(Bldgs 91-95).





Fort Robinson and Red Cloud Agency

Crawford, Nebraska, Dawes County

Stephen Lissandrello, 8/75

Historic Sites Survey, NPS

Facing north to 1909 Veterinary Hospital  
(Bldg. 80).



Fort Robinson and Red Cloud Agency

Crawford, Nebraska, Dawes County

Stephen Lissandrello, 8/75

Historic Sites Survey, NPS

Facing west to (left, Bldg. 71) 1908

Cavalry Stable and (right, Bldg. 64)

1891 Cavalry Stable.



Fort Robinson and Red Cloud Agency

Crawford, Nebraska, Dawes County

Stephen Lissandrello, 8/75

Historic Sites Survey, NPS

Facing east towards 1875 Officer's  
Quarters (Bldgs 3-6).



Fort Robinson and Red Cloud Agency

Crawford, Nebraska, Dawes County

Stephen Lissandrello, 8/75

Historic Sites Survey, NPS

Facing south towards reconstructed (left  
Bldg. 12) 1874 Adjutant and (right, Bldg.  
14) 1874 Guard House.





Fort Robinson and Red Cloud Agency

Crawford, Nebraska, Dawes County

Stephen Lissandrello, 8/75  
Historic Sites Survey, NPS

Facing east to 1884 Wheelwright's Shop.



NEBRASKA

HISTORICAL

MARKER



## RED CLOUD AGENCY

Red Cloud Agency was established here in 1873 for Chief Red Cloud and his Oglala band, as well as for other northern plains Indians, totaling nearly 13,000. Their earlier agency had been located off the North Platte near Fort Laramie. The agencies served as issuing points for supplies to the Sioux, Cheyenne and Arapaho, authorized in exchange for land ceded to the U.S. in 1868. Dr. J. J. Saville, nominated by the Episcopal Church, was appointed the first agent.

A faction of Agency Indians, joined with visiting hostiles, harassed Saville and his thirty to forty employees, threatened cowboys, and rode through the unfinished stockade shooting out windows. After the establishment of nearby Camp Robinson in March 1874, the agency remained a powder keg. In October 1874, for example, hostiles chopped down the new agency flagpole and threatened to destroy both the agency and the military camp.

During the Indian war of 1876, the agency served as the center for non-hostiles. After the treaty ceding the Black Hills to the U.S. was signed here in 1876, and the death of Crazy Horse in 1877, the agency was relocated to the Pine Ridge Agency, Dakota Territory.

Nebraska State Historical Society

Fort Robinson and Red Cloud Agency

Crawford, Nebraska, Dawes County

Stephen Lissandrello, 8/75

Historic Sites Survey, NPS

Facing north to Red Cloud Agency site.

Note marker in left center placing camp structure.



Fort Robinson and Red Cloud Agency

Crawford, Nebraska, Dawes County

Stephen Lissandrello, 8/75

Historic Sites Survey, NPS

Facing east to multiple-dwelling 1909  
Officer's Quarters (Bldg. 99).



Fort Robinson and Red Cloud Agency

Crawford, Nebraska, Dawes County

Stephen Lissandrello, 8/75

Historic Site Survey, NPS

Facing North to front entrances, 1909 duplex Officer's Quarters (Bldg. 85 on map).





FT. ROBINSON & RED CLOUD AGENCY

Crawford, Nebraska

Photographer: Sally Pearce, 7/12/83

Negatives: at NPS, Rocky Mt. Region

View: Bldg. #32, Post Headquarters



FT. ROBINSON & RED CLOUD AGENCY

Crawford, Nebraska

Photographer: Sally Pearce

Negatives: at NPS, Rocky Mt. Region

View: 1874 Officer's Row



FT. ROBINSON & RED CLOUD AGENCY

Crawford, Nebraska

Photographer: Sally Pearce, 7/12/83

Negatives: at NPS, Rocky Mt. Region

View: Bldg. #101, Post Gymnasium





FT. ROBINSON & RED CLOUD AGENCY

Crawford, Nebraska

Photographer: Sally Pearce 7/12/83

Negatives: at NPS, Rocky Mt. Region

View: Bldgs. #42-47, Officer's Qtrs.

(1874)





FT. ROBINSON & RED CLOUD AGENCY

Crawford, Nebraska

Photographer: Sally Pearce, 7/12/83

Negatives: at NPS, Rocky Mt. Region

View: Bldg. #124, Vet Hospital



FT. ROBINSON & RED CLOUD AGENCY

Crawford, Nebraska

Photographer: Sally Pearce, 7/12/83

Negatives: at NPS, Rocky Mt. Region

View: Red Cloud Agency, showing  
markers, facing north



FT. ROBINSON & RED CLOUD AGENCY

Crawford, Nebraska

Photographer: Sally Pearce, 7/12/83

Negatives: at NPS, Rocky Mt. Region

View: Red Cloud Agency, looking to

Red Cloud's Village, facing west



FT. ROBINSON & RED CLOUD AGENCY

Crawford, Nebraska

Photographer: Sally Pearce, 7/12/83

Negatives: at NPS, Rocky Mt. Region

View: Site of POW Camp, facing south





FT. ROBINSON & RED CLOUD AGENCY

Crawford, Nebraska

Photographer: Sally Pearce, 7/12/83

Negatives: at NPS, Rocky Mt. Region

View: Camp Camby Site, facing south



FT. ROBINSON & RED CLOUD AGENCY

Crawford, Nebraska

Photographer: Sally Pearce, 7/12/83

Negatives: At NPS, Rocky Mt. Region

View: The Farm, Dairy Barn on right,  
slaughterhouse on left



NEBRASKA  
HISTORICAL MARKER

### THE FORT ROBINSON CEMETERY

The first recorded interment in the Fort Robinson Cemetery was that of James Brown, July 2, 1875, and the last Larry Dean Wittig, July 19, 1945. Among the 750 interments listed in Fort Robinson Cemetery records are two officers, Markham Williamson and James A. Smith, two Army sergeants, throughout the West, Moses California and Miles Custer's favorite scout and Baptiste, Little Bear Gardner, nine men killed in the tragic Cholera Outbreak, January, 1878, two Congressional Medal of Honor recipients, Samuel Stone and George Jordan, and a number of women and children, the dependents of service personnel.

Its location at the confluence of Soldier Creek and the White River made the Fort Robinson Cemetery subject to frequent flooding. In 1914, E. A. Brimmon, director of the post, visited the cemetery and was shocked to find that it was over-run with weeds and underbrush. Lake caretakers were appointed, and the cemetery has well maintained until the post closed.

When the United States Army abandoned the Robinson in 1918, the remaining 240 graves, 45 of which were listed as unknown, were placed in care of the Nebraska National Guard and the National Cemetery Administration.

FT. ROBINSON & RED CLOUD AGENCY

Crawford, Nebraska

Photographer: Sally Pearce, 7/12/83

Negatives: at NPS, Rocky Mt. Region

View: Ft. Robinson Cemetery Site

facing southwest





FT. ROBINSON & RED CLOUD AGENCY

Crawford, Nebraska

Photographer: Sally Pearce, 7/12/83

Negatives: at NPS, Rocky Mt. Region

View: The Farm, slaughterhouse





FT. ROBINSON & RED CLOUD AGENCY

Crawford, Nebraska

Photographer: Sally Pearce, 7/12/83

Negatives: at NPS, Rocky Mt. Region

View: Building #49, Bandleader's Qtrs.



FT. ROBINSON & RED CLOUD AGENCY

Crawford, Nebraska

Photographer: Sally Pearce, 7/12/83

Negatives: at NPS, Rocky Mt. Region

View: 1887 Officer's Row - Adobe



University of Michigan  
MELBURN  
Historic Building  
1900-1905

FT. ROBINSON & RED CLOUD AGENCY

Crawford, Nebraska

Photographer: Sally Pearce, 7/12/83

Negatives: at NPS, Rocky Mt. Region

View: Bldgs. #4-9, 1887 Adobe

Officer's Quarters





FT. ROBINSON & RED CLOUD AGENCY

Crawford, Nebraska

Photographer: Sally Pearce, 7/12/83

Negatives: at NPS, Rocky Mt. Region

View: Bldgs. #4C, 7C, garages





FT. ROBINSON & RED CLOUD AGENCY

Crawford, Nebraska

Photographer: Sally Pearce, 7/12/83

Negatives: at NPS, Rocky Mt. Region

View: Bldg. #38, Barracks



FT. ROBINSON & RED CLOUD AGENCY

Crawford, Nebraska

Photographer: Sally Pearce, 7/12/83

Negatives: at NPS, Rocky Mt. Region

View: Bldg. #1, Commanche Hall,

Bachelor Off. Qtrs.



FT. ROBINSON & RED CLOUD AGENCY

Crawford, Nebraska

Photographer: Sally Pearce, 7/12/83

Negatives: at NPS, Rocky Mt. Region

View: Bldgs. #10, 12 - Officer Qtrs.

(former latrines)





L.T. COL. EDWARD HARRY

FT. ROBINSON & RED CLOUD AGENCY

Crawford, Nebraska

Photographer: Sally Pearce, 7/12/83

Negatives: at NPS, Rocky Mt. Region

View: Bldg. #15, Officer's Quarters





FT. ROBINSON & RED CLOUD AGENCY

Crawford, Nebraska

Photographer: Sally Pearce, 7/12/83

Negatives: at NPS, Rocky Mt. Region

View: Bldg. #16, Officer's Quarters



FT. ROBINSON & RED CLOUD AGENCY

Crawford, Nebraska

Photographer: Sally Pearce, 7/12/83

Negatives: at NPS, Rocky Mt. Region

View: Bldg. #19, Officer's Quarters



FT. ROBINSON & RED CLOUD AGENCY

Crawford, Nebraska

Photographer: Sally Pearce, 7/12/83

Negatives: at NPS, Rocky Mt. Region

View; Bldg. #17, Commanding Officer's

Quarters (1909)





FT. ROBINSON & RED CLOUD AGENCY

Crawford, Nebraska

Photographer: Sally Pearce, 7/12/83

Negatives: at NPS, Rocky Mt. Region

View: Building #308, Assembly, Mess Hall





FT. ROBINSON & RED CLOUD AGENCY

Crawford, Nebraska

Photographer: Sally Pearce, 7/12/83

Negatives: at NPS, Rocky Mt. Region

View: Bldgs. #309, NCO Quarters

#310. Pest House



FT. ROBINSON & RED CLOUD AGENCY

Crawford, Nebraska

Photographer: Sally Pearce, 7/12/83

Negatives: at NPS, Rocky Mt. Region

View: Bldg. #311, Hosp. Stwd. Qtrs.



FT. ROBINSON & RED CLOUD AGENCY

Crawford, Nebraska

Photographer: Sally Pearce, 7/12/83

Negatives: at NPS, Rocky Mt. Region

View: Bldg. #201, Powder Magazine





FT. ROBINSON & RED CLOUD AGENCY

Crawford, Nebraska

Photographer: Sally Pearce, 7/12/83

Negatives: at NPS, Rocky Mt. Region

View: Bldg. #27, Firehouse





FT. ROBINSON & RED CLOUD AGENCY

Crawford, Nebraska

Photographer: Sally Pearce, 7/12/83

Negatives: at NPS, Rocky Mt. Region

View: Bldg. #119, Stable Guard



FT. ROBINSON & RED CLOUD AGENCY

Crawford, Nebraska

Photographer: Sally Pearce, 7/12/83

Negatives: at NPS, Rocky Mt. Region

View: Bldg. #109, 1891 Cavalry

Stable



FT. ROBINSON & RED CLOUD AGENCY

Crawford, Nebraska

Photographer: Sally Pearce, 7/12/83

Negatives: at NPS, Rocky Mt. Region

View: Bldgs, #103, 104 - 1908

Cavalry Stables



FT. ROBINSON & RED CLOUD AGENCY

Crawford, Nebraska

Photographer: Sally Pearce, 7/12/83

Negatives: at NPS, Rocky Mt. Region

View: Bldg. #121, Stable Guard





FT. ROBINSON & RED CLOUD AGENCY

Crawford, Nebraska

Photographer: Sally Pearce, 7/12/83

Negatives: at NPS, Rocky Mt. Region

View: hay barns, looking southwest



FT. ROBINSON & RED CLOUD AGENCY

Crawford, Nebraska

Photographer: Sally Pearce, 7/12/83

Negatives: at NPS, Rocky Mt. Region

View: Bldgs. #106, 105 Cavalry

Stables - 1908



FT. ROBINSON & RED CLOUD AGENCY

Crawford, Nebraska

Photographer: Sally Pearce, 7/12/83

Negatives: at NPS, Rocky Mt. Region

View: Bldg. #123, Vet. Hosp. Annex





FT. ROBINSON & RED CLOUD AGENCY

Crawford, Nebraska

Photographer: Sally Pearce. 7/12/83

Negatives: At NPS, Rocky Mt. Region

View: Bldg. #307, Sleeping Qtrs.



FT. ROBINSON & RED CLOUD AGENCY

Crawford, Nebraska

Photographer: Sally Pearce, 7/12/83

Negatives: at NPS, Rocky Mt. Region

View: Bldgs. #114, 115, Blacksmith  
Shops



FT. ROBINSON & RED CLOUD AGENCY

Crawford, Nebraska

Photographer: Sally Pearce, 7/12/83

Negatives: at NPS, Rocky Mt. Region

View: Bldgs. #305, Sale Barn

#304, Broodmare & shipping stable



FT. ROBINSON & RED CLOUD AGENCY

Crawford, Nebraska

Photographer: Sally Pearce, 7/12/83

Negatives: at NPS, Rocky Mt. Region

View: Bldg. #229, Wheelwright's Shop





FT. ROBINSON & RED CLOUD AGENCY

Crawford, Nebraska  
Negatives: at NPS, Rocky Mt. Region  
Photographer: Sally Pearce, 7/12/83

View: #48, CCC Swimming Pool



POST PLAYHOUSE  
GETTING MARRIED

FT. ROBINSON & RED CLOUD AGENCY

Crawford, Nebraska

Photographer: Sally Pearce, 7/12/83

Negatives: at NPS, Rocky Mt. Region

View: Bldg. #223, QM store



FT. ROBINSON & RED CLOUD AGENCY

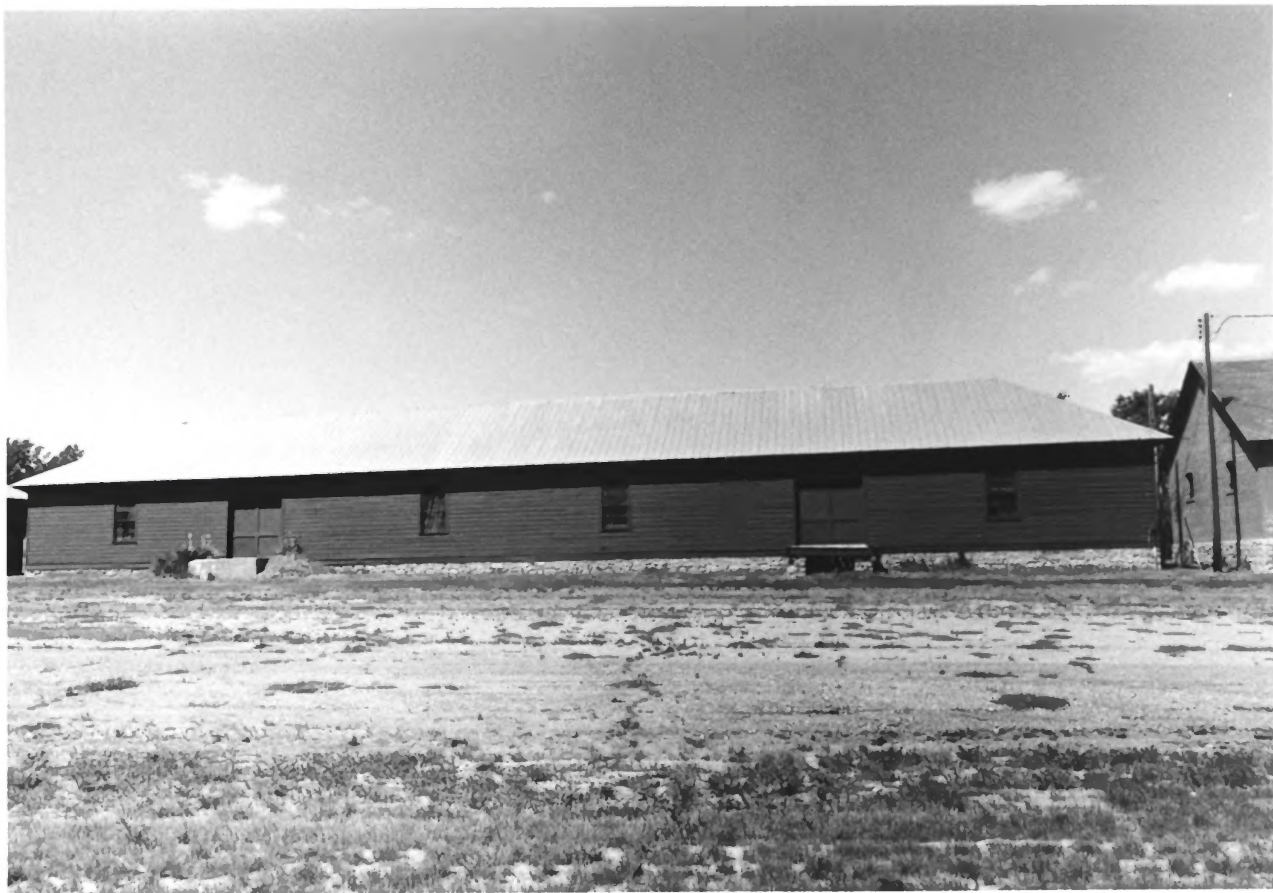
Crawford, Nebraska

Photographer: Sally Pearce, 7/12/83

Negatives: at NPS, Rocky Mt. Region

View: Bldg. #223, QM Stores

(Post Playhouse)





FT. ROBINSON & RED CLOUD AGENCY

Crawford Nebraska

Photographer: Sally Pearce, 7/12/83

Negatives: at NPS, Rocky Mt. Region

View: Bldg. #222, QM Store





FT. ROBINSON & RED CLOUD AGENCY

Crawford, Nebraska

Photographer: Sally Pearce, 7/12/83

Negatives: at NPS, Rocky Mt. Region

View: Bldg. #239, QM Shop



FT. ROBINSON & RED CLOUD AGENCY

Crawford, Nebraska

Photographer: Sally Pearce, 7/12/83

Negatives: at NPS, Rocky Mt. Region

View: #302, water towers.



FT. ROBINSON & RED CLOUD AGENCY

Crawford, Nebraska

Photographer: Sally Pearce 7/12/83

Negatives: at NPS, Rocky Mt. Region

View: Bldgs. #220-221, Granary



FT. ROBINSON & RED CLOUD AGENCY

Crawford, Nebraska

Photographer: Sally Pearce, 7/12/83

Negatives: at NPS, Rocky Mountain Reg.

View: Bldg. #244, Implement Shed





FT. ROBINSON & RED CLOUD AGENCY

Crawford, Nebraska

Photographer: Sally Pearce, 7/12/83

Negatives: at NPS, Rocky Mt. Region

View: Bldg. #240, Paint Storage

A black and white photograph of a small, dark wooden building with a gabled roof. The building is situated on a dirt or gravel lot. A large, leafy tree stands behind the building, casting a shadow over it. In the background, there are more trees, a utility pole with power lines, and a clear sky. The building has a sign on its front facade that reads "FORT ROBINSON STATION".

FORT ROBINSON  
STATION

FT. ROBINSON & RED CLOUD AGENCY

Crawford, Nebraska

Photographer: Sally Pearce, 7/12/83

Negatives: at NPS, Rocky Mt. Region

View: Bldg. #225 - Concession

intrusion



FT. ROBINSON & RED CLOUD AGENCY

Crawford, Nebraska

Photographer: Sally Pearce

Negatives: at NPS, Rocky Mt. Region

View: 1886 Percy Homestead - non-

contributing to district





FT. ROBINSON & RED CLOUD AGENCY

Crawford, Nebraska

Photographer: Sally Pearce, 7/12/83

Negatives: at NPS, Rocky Mt. Region

View: Swimming Pool (intrusion)



FT. ROBINSON & RED CLOUD AGENCY

Crawford, Nebraska

Photographer: Sally Pearce, 7/12/83

Negatives: at NPS, Rocky Mt. Region

View: The Farm, hay barn, facing

southwest



FT. ROBINSON & RED CLOUD AGENCY

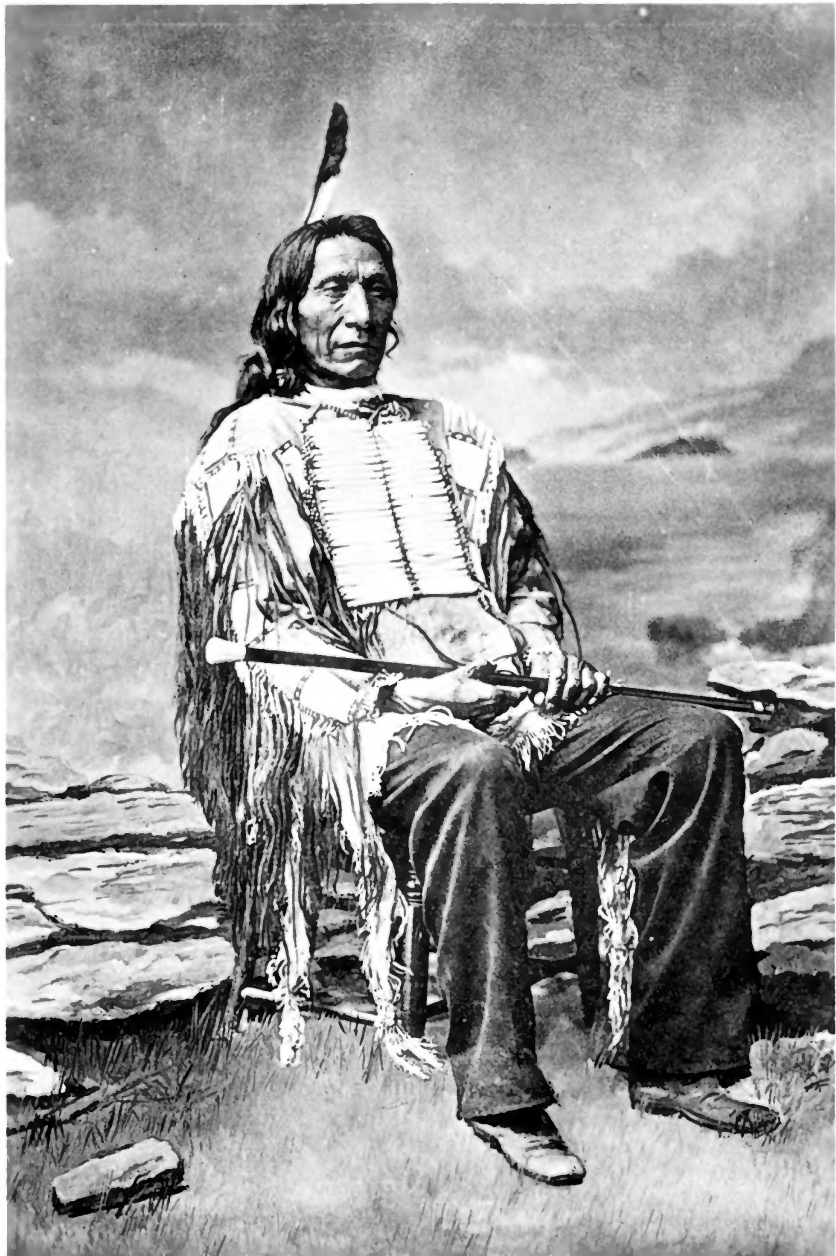
Crawford, Nebraska

Photographer: Sally Pearce, 7/12/83

Negatives: at NPS, Rocky Mt. Region

View: Bldgs. #138 Recon. Adjutant's

Office; #140 Recon. Guard House



Red Cloud. From The Indians of North America; Life

Pictures in Photo-Gravure, copyright 1895 by A. Witte-

man, New York. Collections of the Library of Congress.



