



S  
A  
N  
T  
A  
F  
E  
T  
R  
A  
I  
L

**PHOTOGRAPH 1**

**Lower Cimarron Spring National Historic Landmark**

**Approximately 12 miles south of Ulysses, Grant County, Kansas**

**Photographer: Arnold Thalheimer**

**Date: September 1993**

**Location of Negative: National Park Service, Omaha, Nebraska**

**Description/View: General overview of the Lower Cimarron Spring site, view to the northeast. The area includes several segments of the Santa Fe Trail.**



## **PHOTOGRAPH 2**

**Lower Cimarron Spring National Historic Landmark**

**Approximately 12 miles south of Ulysses, Grant County, Kansas**

**Photographer: Arnold Thalheimer**

**Date: September 1993**

**Location of Negative: National Park Service, Omaha, Nebraska**

**Description/View: Santa Fe Trail ruts; view looking southwest. The ruts, which are located in the area with higher grass, pass between the Wagon Bed Springs Chapter of the Santa Fe Trail Association's display in the background on the right, and the historic location of Lower Cimarron Spring near the bend of the Cimarron River on the left.**



**PHOTOGRAPH 3**

**Lower Cimarron Spring National Historic Landmark**

**Approximately 12 miles south of Ulysses, Grant County, Kansas**

**Photographer: Arnold Thalheimer**

**Date: September 1993**

**Location of Negative: National Park Service, Omaha, Nebraska**

**Description/View: The rectangular-shaped depression of the Joyce-Dappert ice house is in the center of the photograph; view looking south. The Cimarron River bend where the spring was located is in the background.**



LOWER CIMMARON SPRING  
Grant County, Kansas  
Joyce-Dappert ice house depression  
Photo by Arnold Thallheimer, 9/93



LOWER CIMARRON SPRING  
Grant County, Kansas  
Historic location of now-dry spring  
Photo by Arnold Thallheimer, 9/93





**PHOTOGRAPH 6**

**Lower Cimarron Spring National Historic Landmark**

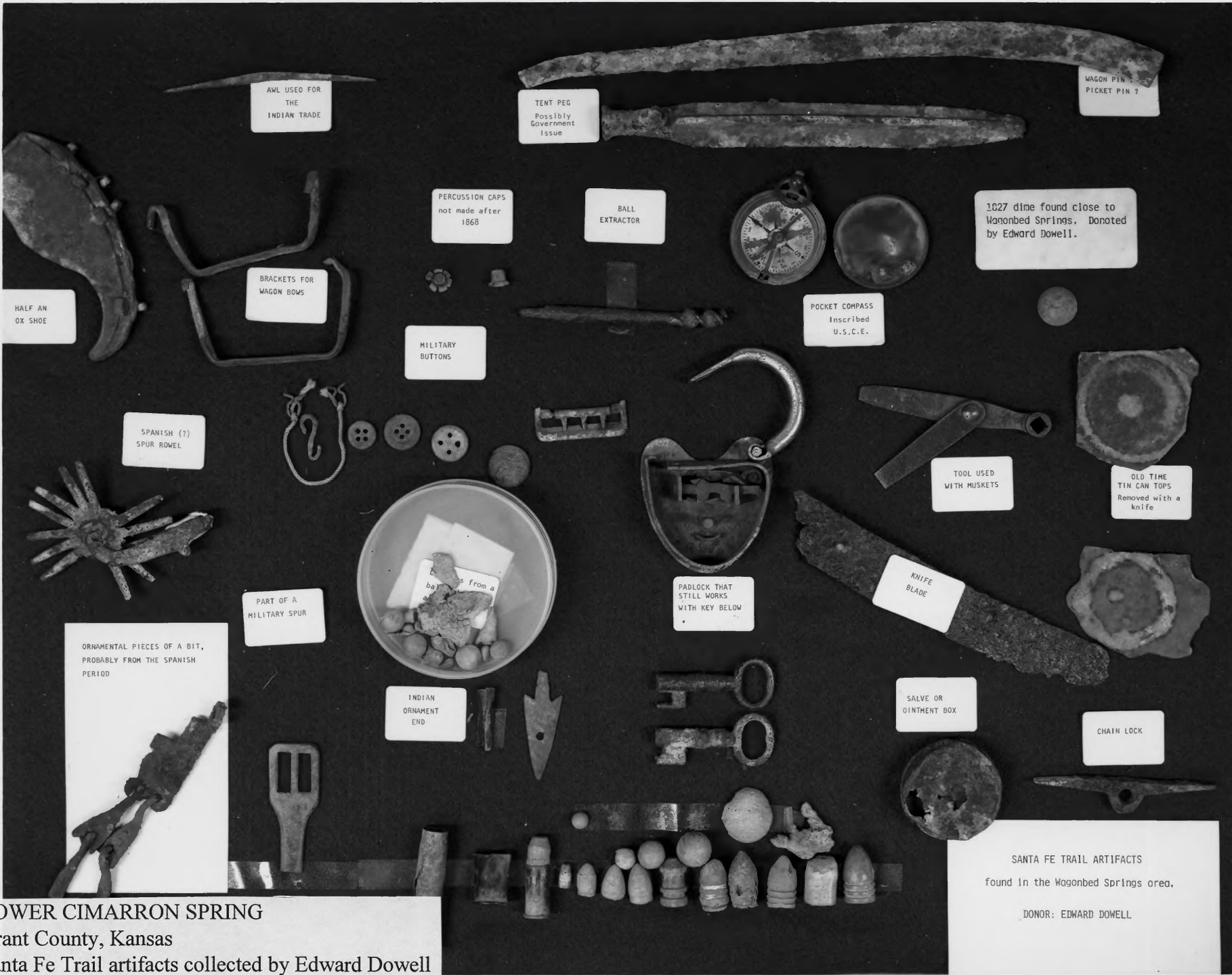
**Approximately 12 miles south of Ulysses, Grant County, Kansas**

**Photographer: Arnold Thallheimer**

**Date: September 1993**

**Location of Negative: National Park Service, Omaha, Nebraska**

**Description/View: The Cimarron River bed in the vicinity of Lower Cimarron Spring. View looking east/southeast.**



AWL USED FOR THE INDIAN TRADE

TENT PEG  
Possibly Government Issue

WAGON PIN  
PICKET PIN ?

HALF AN OX SHOE

BRACKETS FOR WAGON BOWS

PERCUSSION CAPS  
not made after 1868

BALL EXTRACTOR

1827 dime found close to Wagonbed Springs. Donated by Edward Dowell.

POCKET COMPASS  
Inscribed U.S.C.E.

MILITARY BUTTONS

SPANISH (?) SPUR ROWEL

TOOL USED WITH MUSKETS

OLD TIME TIN CAN TOPS  
Removed with a knife

PART OF A MILITARY SPUR

PADLOCK THAT STILL WORKS WITH KEY BELOW

KNIFE BLADE

ORNAMENTAL PIECES OF A BIT, PROBABLY FROM THE SPANISH PERIOD

INDIAN ORNAMENT END

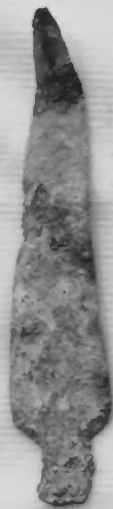
SALVE OR OINTMENT BOX

CHAIN LOCK

SANTA FE TRAIL ARTIFACTS  
found in the Wagonbed Springs area.

DONOR: EDWARD DOWELL

LOWER CIMARRON SPRING  
Grant County, Kansas  
Santa Fe Trail artifacts collected by Edward Dowell  
Photo by Arnold Thallheimer, 9/93



**PHOTOGRAPH 8**

**Lower Cimarron Spring National Historic Landmark**

**Approximately 12 miles south of Ulysses, Grant County, Kansas**

**Photographer: Arnold Thalheimer**

**Date: September 1993**

**Location of Negative: National Park Service, Omaha, Nebraska**

**Description/View: Santa Fe Trail artifacts, which include rifle parts, metal arrowheads, and a crucifix, collected by Edward Dowell within the Lower Cimarron Spring National Historic Landmark.**



LOWER CIMARRON SPRING  
Grant County, Kansas  
Aerial photo of historic location of spring  
in bend of Cimmaron River  
Photo by James Walker, 9/93