



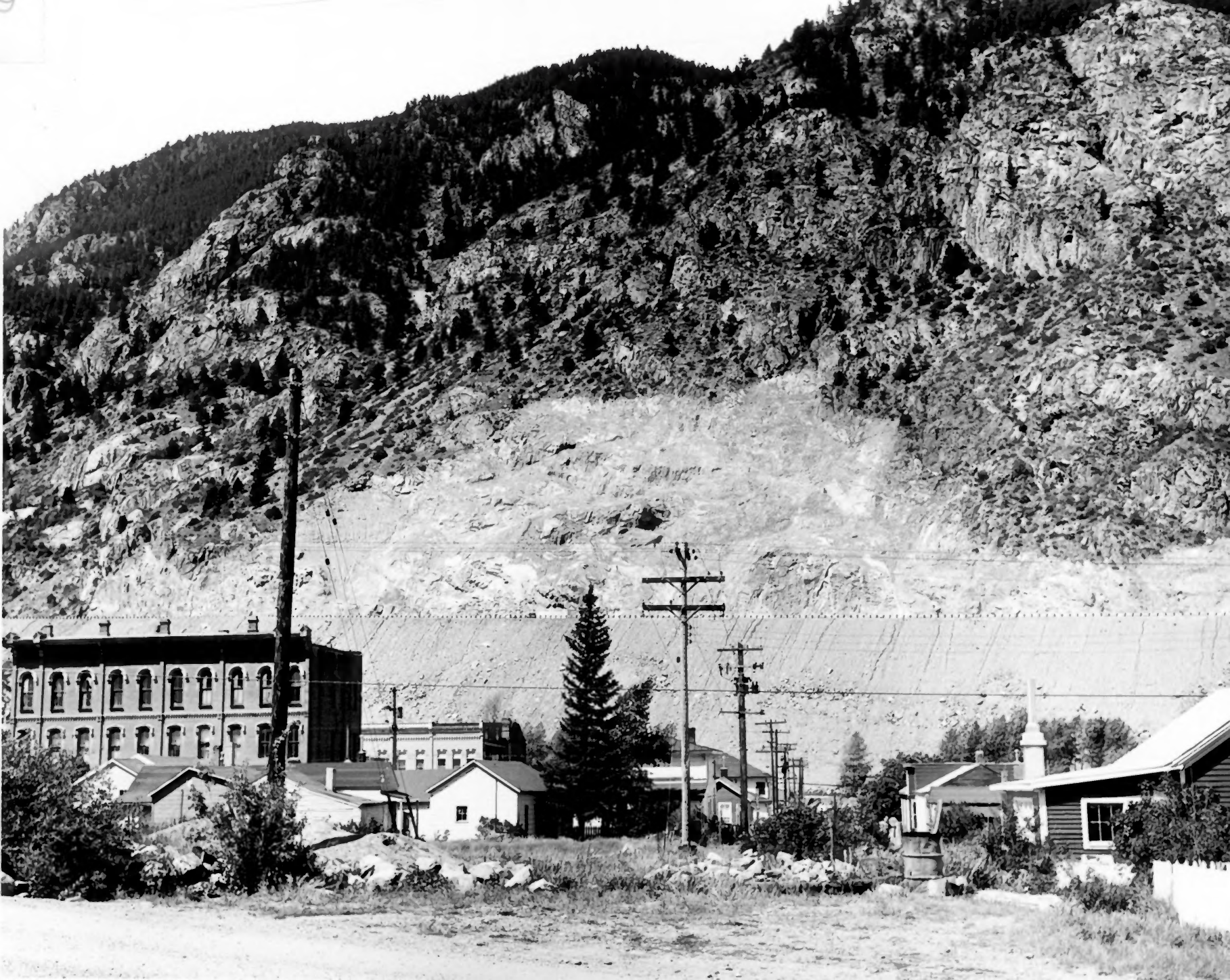
Near Georgetown, Colorado

Georgetown-Silver Plume Hist. Dist.,
Colo.



Georgetown-Silver Plume Hist. Dist.,
Colo.

Alan Sharpston, Colorado



Georgetown-Silver Plume Hist. Distr.,

Georgetown,

Pa.

Joseph W. W. W.



Georgetown-Silver Plume Hist. Distr.,
Colorado

© Park, Georgetown, Colorado, Park N



Georgetown-Silver Plume Hist. Distr.,
Colorado

Georgetown Colorado,
Feb 11 1911

HISTOR



Georgetown-Silver Plume Hist. Distr.,
Colorado

Georgetown, CO, looking northward along 9th St.
showing scale of 115 ft line as accepted.

PIC LANDMARK



Georgetown-Silver Plume Hist. Distr.,
Colorado

Georgetown, CO,
Looking SW toward
Silver Plume



Georgetown-Silver Plume Hist. Distr,
Colo.

Georgetown, Col.

Section SW



Georgetown-Silver Plume Hist. Distr.,
Colorado

Dear Georgetown, CO.



Georgetown-Silver Plume Hist. Distr.,
Colorado

Old list of Georgetown, Colorado

PK



Georgetown-Silver Plume Hist . Dist.,
Colo.

Georgetown, Colorado, Looking S



Georgetown-Silver Plume Hist. Distr.,
Colo.

Georgetown, Colorado,
Looking N



Near Georgetown, Colorado

Georgetown-Silver Plume Hist. Dist.,
Colo.



Georgetown-Silver Plume Hist. Distr.,
Colo

Mrs. Georgetown, Co.



Georgetown-Silver Plume Hist. Distr.,
Colo.

Alan Georgetown, Colorado



Georgetown-Silver Plume Hist. Distr.,
Colo.

Dear Georgetown, Colorado



Georgetown-Silver Plume Hist. Distr.,
Colo.

Thompson, Ed., Showing route + approval
route of PSC 115 KV line under
accepted agreement.



Georgetown-Silver Plume Hist. Distr.,
Colo.

Wm. W. W. W. W.
Georgetown, Co.



Georgetown-Silver Plume Hist. Distr.,
Colorado

Near Georgetown, Colorado



Georgetown-Silver Plume Hist. Dist.,
Colo.

Georgetown, Colorado
Looking S



Georgetown-Silver Plume Hist. Distr.,
Colo.

Georgetown, Col.



DANGER
HIGH
VOLTAGE

Georgetown-Silver Plume Hist. Distr.,
Colorado

PSC Substation, False Building covering
substation equipment, Georgetown, Colorado



Photo #1 | Name: Georgetown-Silver Plume
Historic District
Hammil House

410: Hammil House, south & east
facades, looking northwest
facades looking NW

2 LOC: Georgetown (Clear Creek (ty.)), CO

3 photo ref: Joseph Scott Menckinshall, S/S
Neg Filed at: HSS/NPS

#1



Photo #2

Hammil office buildings, looking
west

1N: Georgetown - Silver Plume Historic Dist
200: Georgetown (Clear Creek City), CO

3 Photo Ref: Joseph S. Mendinghall, S175
neg filed at: NPS/HSS

4 20: Hammil Office buildings,
looking W. #2



Photo # 3

Maxwell House, north elevation
looking south

1 N: Georgetown - Silver Plume HD

2 Loc: ~~Georgetown~~ Georgetown (Clear Creek city) CO

3 Photo REF: Joseph S Mendinghall, 5/75
Neg filed at: HSS, NPS

4 IO: Maxwell House, N elevation,
looking S #3



Photo # 4

Luedde House, east & north
facades, looking southwest

- 1 Name - Georgetown - Silver Plume HD
- 2 LOC - Georgetown (Clear Creek Cty), CO
- 3 Photo Ref: Joseph S. Mendinghall, S/3
neg loc at: HSS/NPS
- 4 ZD: Luedde House, E & N facades
looking SW

#4



Photo #5

Spencer House, north + west
elevations, looking southeast

1 N-Georgetown - Silver Plume HD



2 Loc-Georgetown CClean creek (city)
CO

3 Photo REF: Joseph S. Mendichhall, S17S
neg loc; #SS, NPS

4 Z O-Spencer House, N & W elevations,
Looking SE

#S



Photo # 6

Bowman-White, south & east
facades, looking northwest

- 1 N-Georgetown-Silver Plume HD
- 2 LOC - Georgetown (Clear Creek (ty.) CO
- 3 Photo REF - Joseph S. Mendinghall, SITS
Neg LOC: NPS, HSS
- 4 ID: Bowman-White, S & E Facades,
Looking NW

#6



Photo # 7

Public School, north + east
facades, looking southwest

- 1 N - Georgetown - Silver Plume HO
- 2 LOC - Georgetown CC (Clear Creek City)
- 3 PHOTO REF - Joseph S. Mendinghall, ^{CO} SITS
Neg LOC - HSS/NPS
- 4 ZD: Public School, N + E facades,
looking SW

#7



THE
HOTEL
DE PARIS

HOTEL DE PARIS

HOTEL DE PARIS

NO
PARKING
HERE
EXCEPT
ON
SUNDAY

Photo # 8

The Hotel de Paris, north &
west facades, looking east

- 1 N Georgetown - Silver Plume HD
- 2 loc - Georgetown, ~~Clear Creek~~ Clear Creek City, CO
- 3 Photo REF - Joseph S. Mendinghall
neg loc - HSS, NBS 5/75
- 4 ZO - The Hotel de Paris, N & W facades
Looking E (#8)

A black and white photograph of a two-story building with horizontal siding. The building has a decorative cornice with a repeating pattern. The text "CLEAR CREEK COUNTY COURT HOUSE" is written in large, bold, sans-serif capital letters on the upper right portion of the facade. The building features several windows: a large multi-paned window on the ground floor left, a doorway in the center ground floor, and several smaller windows on the second floor. An American flag is visible on a pole in front of the building. In the foreground, a station wagon and a pickup truck are parked on a street. A hillside is visible in the background.

CLEAR CREEK COUNTY
COURT HOUSE

Photo #9

Clear Creek County Courthouse,
east elevations, looking west

1 N-Georgetown - Silver Plume HD

2 LOC - Georgetown (Clear Creek Cty), CO

3 PHOTOREF - Joseph S. Mendinghall 5/75
neg loc - HSS / NPS

4 IO - Clear Creek Courthouse,
E elevation, looking W. (#9)



Photo # 10

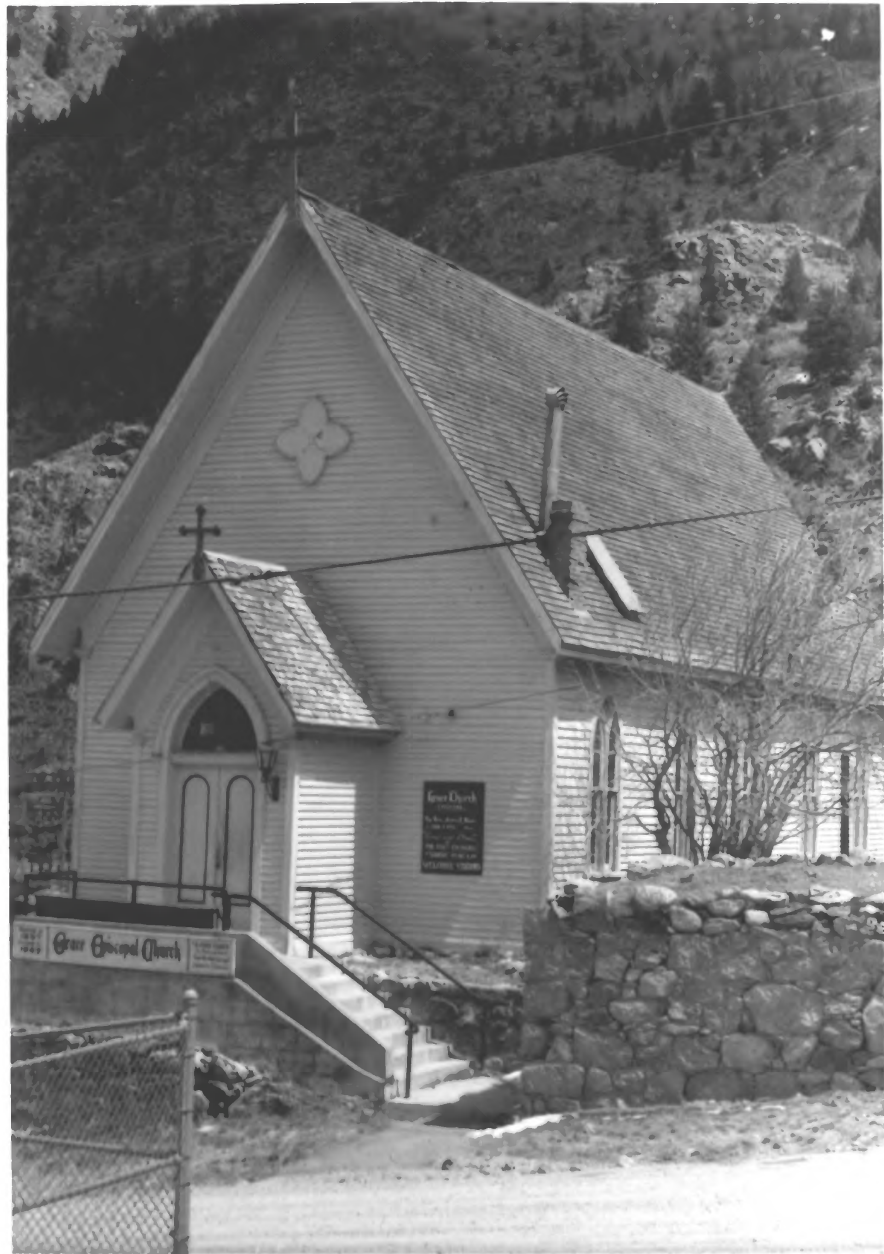
The old jail, east elevation,
looking west

1 N-Georgetown - Silver Plume Ho

2 LOC - Georgetown, (Clean Creek City) CO

3 Photo REF - Joseph S. Mendinghall, S/K
Neg LOC - HSS/NPS

4 2D - The old jail, E elevation, (#10)
looking w



Grace Church
Pastor: Rev. J. H. ...
Worship: 10:30 A.M. ...
Sunday School: 10:00 A.M. ...
Bible Class: 7:00 P.M. ...
Prayer Meeting: 7:30 P.M. ...

Grace Episcopal Church

Photo # 11

Grace Episcopal Church,
south and west elevations,
looking northeast

1 N Georgetown - Silver Plume HO

2 LOC Georgetown Clear Creek (Twp), CO

3 Photo REF - Joseph S. Mendonhall,
NE9 LOC - HSS INPS
S/TS

4 ZO - Grace Episcopal Church
S & W elevations, looking NE #11



Photo #12

The Old Silver Plume School
House, north elevation,
looking north

1 N Georgetown - Silver Plume Ho

2 Loc Georgetown, CO
Clear Creek (S)

3 Photo Ref - Joseph S Menkinghall, S/S
Neg loc: HSS/NPS

4 ID The Old Silver Plume School
House, N elevation, looking N #12



Photo #13

The Windsor Hotel, south +
east elevations looking
north

1 N-Georgetown-silver Plume HD

2 LOC-Georgetown, (Clear Creek Cty), CO

3 PHOTO REF - Joseph S. Mendinghall, SITS
neg loc: H55/NPS

4 ID - The Windsor Hotel, S&E elevations
looking N



Photo 14

Silver Plume Church, west &
south facades looking northeast

1^{N:} Georgetown-Silver Plume
H.D.

2 loc: Georgetown (Clear Creek Ctr), CO

3 Photo Ref: Joseph S. Mendinghall, S/B
Neg loc: HSS/NPS

4 IO: Silver Plume Church,
W & S facades, looking NE

#14



Photo 15

The Old Jail, south + east
facades looking northwest

IN Georgetown - Silver Plume Ho

2 LOC Georgetown (Clear Creek City), CO

3 Photo REF - Joseph S. Mendinghall, SITS
Neg LOC HSS, NPS

4 ID The Old Jail, S/E Facades
Looking NE #15

SILVER PLUME HOSE CO.
1886.



Photo 16

Silver Plume Hose Co.
north elevation looking
west

- 1 N Georgetown - Silver Plume Ho
- 2 Loc Georgetown, Clear Creek City, CO
- 3 Photo REF - Joseph S. Mendinghall, 5175
Neg Loc HSSNPS
- 4 IO: Silver Plume Hose Co., N. Elevation,
Looking W. (#16)



SILVER PLUME

Photo 17

The Georgetown Loop Railroad
station at Silver Plume,
looking northeast

- 1 Georgetown-Silver Plume HD
- 2 loc Georgetown, Clear Creek (ty.), CO
- 3 Photo REF - Joseph S. Mendinghall, SITS
- 4 ID The Georgetown Loop
Railroad Station at
Silver Plume, looking NE

#17

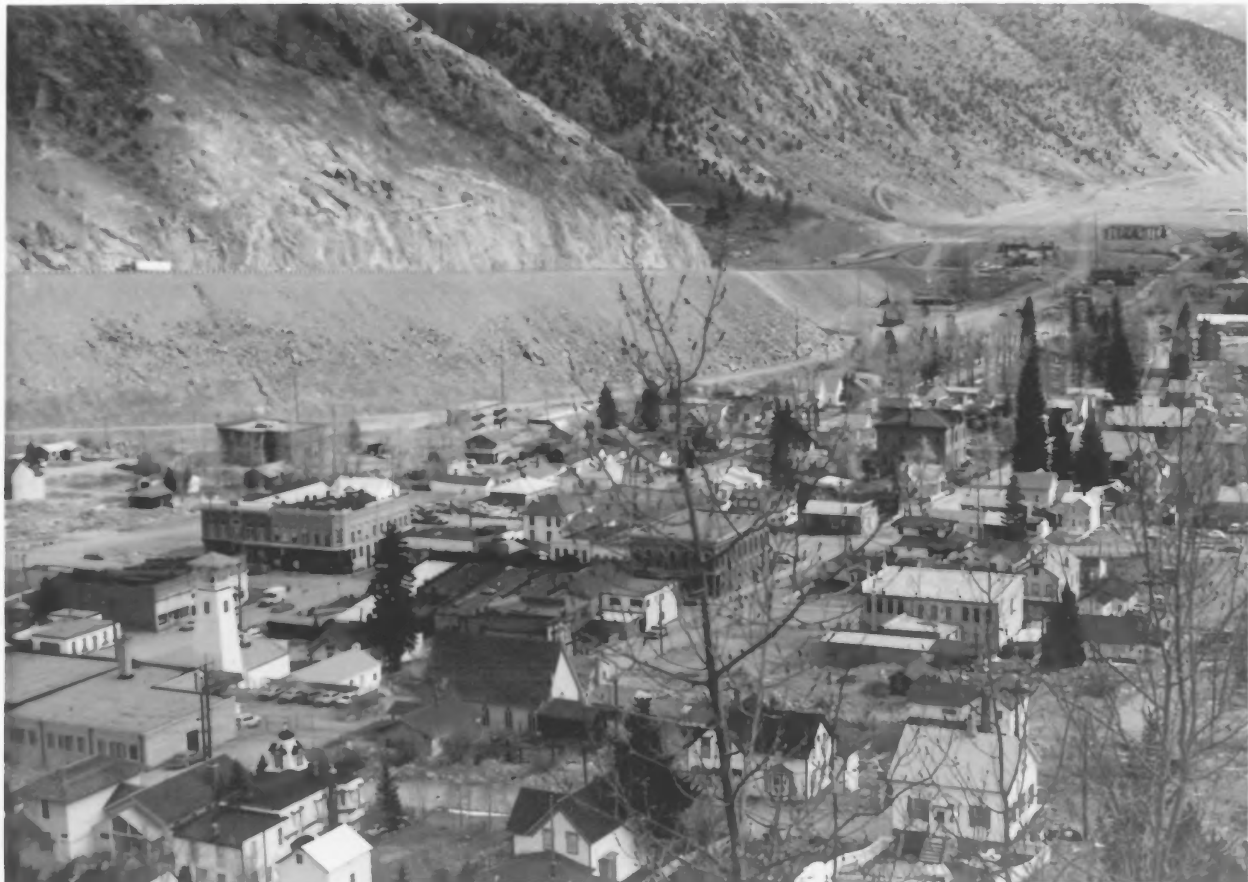



Photo #18

Aerial view of Georgetown,
looking northeast

IN Georgetown - silver plume HO


2 LOC Georgetown (Clear Creek City) CO

3 photo REF - Joseph S. Mendinghall, S/RS
neg LOC: HSS / NPS

4 ID: Aerial view of Georgetown, #18
looking NE



Photo #19

View of Streets lined with
trees, photograph views
north

IN Georgetown-Silver Plume HO

2 loc Georgetown (Clear Creek City), CO

3 Photo REF Joseph S. Mendinghall, 5/75
neg loc: HSS/MS

4 2D View of street lined with trees #19
Photograph Views N.