



1. PRESIDIO ARMY MUSEUM
PRESIDIO OF SAN FRANCISCO
2. SAN FRANCISCO, CALIFORNIA
3. NATIONAL PARK SERVICE PHOTO BY GORDON CHAPPELL
4. AUGUST 1990
5. NEGATIVE AT NATIONAL PARK SERVICE
WESTERN REGIONAL OFFICE
6. POST HOSPITAL BUILT 1863-1864 (DESPITE
BRONZE PLAQUE WHICH SAID 1857)
VIEW TOWARD NORTHWEST OF BLDG. NO. 2
7. PHOTO NO. 1 OF 78



1. OFFICERS' ROW
PRESIDIO OF SAN FRANCISCO

BLDGs. NOS. 6-10

2. SAN FRANCISCO, CALIFORNIA

3. NATIONAL PARK SERVICE PHOTO BY GORDON CHAPPELL

4. JUNE 1990

5. NEGATIVE AT NATIONAL PARK SERVICE
WESTERN REGIONAL OFFICE

6. OFFICERS' QUARTERS, BUILT 1862,
ON FUNSTON AVENUE NORTH OF THE ALAMEDA

VIEW TOWARD NORTH OF BLDGS. NOS.
(LEFT TO RIGHT) 10, 9, 8, 7, 6

7. PHOTO NO. 2 OF 78



1. BARRACKS ON KEYES AVENUE
PRESIDIO OF SAN FRANCISCO

BLDG. NO. 35

2. SAN FRANCISCO, CALIFORNIA

3. NATIONAL PARK SERVICE PHOTO BY GORDON CHAPPELL

4. JUNE 1989

5. NEGATIVE AT NATIONAL PARK SERVICE WESTERN REGIONAL OFFICE

6. OLD BARRACKS NO. 35, BUILT IN 1912, NOW 6TH ARMY
HEADQUARTERS OFFICES, VIEW TOWARD SOUTH

7. PHOTO NO. 3 OF 78

Photo by
Gordon Chappell

JUN 1989



1. MILITARY POLICE OFFICES
PRESIDIO OF SAN FRANCISCO
2. SAN FRANCISCO, CALIFORNIA
3. NATIONAL PARK SERVICE PHOTO BY
4. JUNE 1989
5. NEGATIVE AT NATIONAL PARK SERVICE
WESTERN REGIONAL OFFICE
6. BUILDING NO. 36, BUILT 1886
AS BARRACKS, NOW MILITARY POLICE
OFFICES, VIEW TOWARD NORTHEAST
7. PHOTO NO. 4 OF 78

Photo by
Gordon Chappell

JUN 1989



1. 6TH ARMY HEADQUARTERS
PRESIDIO OF SAN FRANCISCO
2. SAN FRANCISCO, CALIFORNIA
3. NATIONAL PARK SERVICE PHOTO BY GORDON CHAPPELL
4. JUNE 1989
5. NEGATIVE AT NATIONAL PARK SERVICE
WESTERN REGIONAL OFFICE
6. BUILDING NO. 38, BUILT 1940.
AS ENLISTED MEN'S BARRACKS WITH
MESS HALL; CONVERTED 1946 TO
HEADQUARTERS, 6TH ARMY. VIEW
TOWARD SOUTHEAST
7. PHOTO NO. 5 OF 78

Photo by
Gordon Chappell

JUN 1989



1. GUEST QUARTERS
PRESIDIO OF SAN FRANCISCO
2. SAN FRANCISCO, CALIFORNIA
3. NATIONAL PARK SERVICE PHOTO BY GORDON CHAPPELL
4. JUNE 1990
5. NEGATIVE AT NATIONAL PARK SERVICE
WESTERN REGIONAL OFFICE
6. VIEW TOWARD SOUTHEAST OF
BACHELOR OFFICERS' QUARTERS,
PERSHING HALL, BUILT 1904
BLDG. NO. 42
7. PHOTO NO. 6 OF 78



1. OFFICERS CLUB
PRESIDIO OF SAN FRANCISCO
2. SAN FRANCISCO, CALIFORNIA
3. NATIONAL PARK SERVICE PHOTO BY GORDON CHAPPELL
4. AUGUST 1990
5. NEGATIVE AT NATIONAL PARK SERVICE
WESTERN REGIONAL OFFICE
6. OFFICERS' CLUB, CONTAINING ADOBE
WALLS CLAIMED TO DATE FROM 1791
AS RESTORED BY THE ARMY IN 1934

VIEW TOWARD WEST OF BLDG. NO. 50.
7. PHOTO NO. 7 OF 78



BLDG. NO. 65

1. OFFICER'S QUARTERS
PRESIDIO OF SAN FRANCISCO
2. SAN FRANCISCO, CALIFORNIA
3. NATIONAL PARK SERVICE PHOTO BY GORDON CHAPPELL
4. JUNE 1989
5. NEGATIVE AT NATIONAL PARK SERVICE WESTERN REGIONAL OFFICE
6. MANSARD ROOF QUARTERS NO. 65 BUILT 1893
VIEW TOWARD NORTHEAST
7. PHOTO NO. 8 OF 78

Photo by
Gordon Chappell

JUN 1989



1. OFFICER'S QUARTERS BLDG. NO. 69
PRESIDIO OF SAN FRANCISCO
2. SAN FRANCISCO, CALIFORNIA
3. NATIONAL PARK SERVICE PHOTO BY GORDON CHAPPELL
4. JUNE 1989
5. NEGATIVE AT NATIONAL PARK SERVICE WESTERN REGIONAL OFFICE
6. BLDG. NO. 69, ONLY MANSARD ROOF QUARTERS AT PRESIDIO, BUILT 1893
7. PHOTO NO. 9 OF 78

**Photo by
Gordon Chappell**

JUN 1989



1. PERSONNEL OFFICES
PRESIDIO OF SAN FRANCISCO
2. SAN FRANCISCO, CALIFORNIA
3. NATIONAL PARK SERVICE PHOTO BY GORDON CHAPPELL
4. JUNE 1989
5. NEGATIVE AT NATIONAL PARK SERVICE
WESTERN REGIONAL OFFICE
6. BUILDINGS NOS. 86 AND 87, BUILT
1863 AS SINGLE STORY BUILDINGS;
REMODELED 1885 INTO TWO STORY
BARRACKS; THEY WERE REMODELED
AGAIN BEFORE 1931 (PROBABLY IN
1917 OR 1918) INTO OFFICES, WITH
THE SECOND STORY PORCHES ENCLOSED
AND GLAZED FOR ADDITIONAL SPACE.
VIEW TOWARD NORTH.
- NOS. 86 AND 87 ON MAP
7. PHOTO NO. 10 OF 78

Photo by
Gordon Chappell

JUN 1989



1. SALUTE GUN MAGAZINE
PRESIDIO OF SAN FRANCISCO

2. SAN FRANCISCO, CALIFORNIA

3. NATIONAL PARK SERVICE
PHOTO BY GORDON CHAPPELL

4. JUNE 1990

5. NEGATIVE AT NATIONAL PARK SERVICE WESTERN REGIONAL OFFICE

6. POWDER MAGAZINE BUILT 1863, BLDG. NO. 95

VIEW TOWARD WEST-SOUTHWEST

7. PHOTO NO. 11 OF 78



1. MONTGOMERY STREET BARRACKS
PRESIDIO OF SAN FRANCISCO
2. SAN FRANCISCO, CALIFORNIA
3. NATIONAL PARK SERVICE PHOTO BY GORDON CHAPPELL
4. JUNE 1990
5. NEGATIVE AT NATIONAL PARK SERVICE WESTERN REGIONAL OFFICE
6. ROW OF BRICK BARRACKS FACING EAST ON
WEST SIDE OF MONTGOMERY STREET, BUILT
1895-1897
VIEW TOWARD SOUTHWEST, RIGHT TO LEFT,
BLDGS. NOS. 105, 104, 103, 102, 101
7. PHOTO NO. 12 OF 78

BLDGS. NOS. 101-105



1. A BRICK BARRACKS
PRESIDIO OF SAN FRANCISCO
2. SAN FRANCISCO, CALIFORNIA
3. NATIONAL PARK SERVICE PHOTO BY GORDON CHAPPELL
4. JUNE 1990
5. NEGATIVE AT NATIONAL PARK SERVICE
WESTERN REGIONAL OFFICE
6. ONE OF FIVE BRICK BARRACKS BUILT ON MONTGOMERY STREET
DURING 1895-1897 - NO. 103 BUILT IN 1896

VIEW TOWARD NORTHWEST
7. PHOTO NO. 13 OF 78



USAISC
PRESIDIO

1. USAISC OFFICES
PRESIDIO OF SAN FRANCISCO, CALIFORNIA
2. SAN FRANCISCO, CALIFORNIA
3. NATIONAL PARK SERVICE PHOTO BY GORDON CHAPPELL
4. JUNE 1989
5. NEGATIVE AT NATIONAL PARK SERVICE,
WESTERN REGIONAL OFFICE
6. BUILDING NO. 116, BUILT 1885,
AS SUTLER'S HOUSE, IN 1989,
USED AS OFFICES. VIEW FROM SOUTH
NO. 116 ON MAP
7. PHOTO NO. 14 OF 78

BLDG. NO. 116

**Photo by
Gordon Chappell**

JUN 1989



1. RILEY AVENUE ENLISTED FAMILY HOUSING BLDGS. NOS. 127-129
PRESIDIO OF SAN FRANCISCO
2. SAN FRANCISCO, CALIFORNIA
3. NATIONAL PARK SERVICE PHOTO BY GORDON CHAPPELL
4. JUNE 1991
5. NEGATIVE AT NATIONAL PARK SERVICE WESTERN REGIONAL OFFICE
6. DUPLEXES FOR MARRIED ENLISTED PERSONNEL NOS. 127, 128, 129
BUILT IN 1931 VIEW TOWARD NORTH
7. PHOTO NO. 15 OF 78



1. NON-COMMISSIONED OFFICERS' CLUB
PRESIDIO OF SAN FRANCISCO
2. SAN FRANCISCO, CALIFORNIA
3. NATIONAL PARK SERVICE PHOTO BY
GORDON CHAPPELL
4. AUGUST 1991
5. NEGATIVE AT NATIONAL PARK SERVICE
WESTERN REGIONAL OFFICE
6. SERVICE CLUB BUILT 1948, LATER N.C.O. CLUB, IN WHICH IN 1951
UNITED STATES AND JAPAN SIGNED A SIGNIFICANT MILITARY TREATY
BLDG. NO. 135 VIEW TOWARD NORTHEAST
7. PHOTO NO. 16 OF 78



1. POST OFFICE AND BANK BLDG. NO. 210
PRESIDIO OF SAN FRANCISCO
2. SAN FRANCISCO, CALIFORNIA
3. NATIONAL PARK SERVICE PHOTO BY GORDON CHAPPELL
4. AUGUST 1990
5. NEGATIVE AT NATIONAL PARK SERVICE
WESTERN REGIONAL OFFICE
6. GUARDHOUSE, BUILT 1900, NOW A POST OFFICE (BLDG. NO. 210)
VIEW TOWARD NORTH OF BLDG. NO. 210
7. PHOTO NO. 17 OF 78



1. POST HEADQUARTERS
PRESIDIO OF SAN FRANCISCO
 2. SAN FRANCISCO, CALIFORNIA
 3. NATIONAL PARK SERVICE PHOTO BY GORDON CHAPPELL
 4. NEGATIVE AT NATIONAL PARK SERVICE WESTERN REGIONAL OFFICE
 5. JUNE 1991
 6. BAKERS' AND COOKS' SCHOOL
BUILT 1939
NOW POST HEADQUARTERS
- VIEW TOWARD NORTH OF EAST SIDE OF BLDG NO. 220
7. PHOTO NO. 18 OF 78



1. MILITARY COURT BUILDING
PRESIDIO OF SAN FRANCISCO
2. SAN FRANCISCO, CALIFORNIA
3. NATIONAL PARK SERVICE PHOTO BY GORDON CHAPPELL
4. JUNE 1989
5. NEGATIVE AT NATIONAL PARK SERVICE
WESTERN REGIONAL OFFICE
6. BUILDING NO. 222, BUILT 1910
AS A STOREHOUSE, VIEW TOWARD
SOUTHEAST
7. PHOTO NO. 19 OF 78

**Photo by
Gordon Chappell**

JUN 1989



1. STOREHOUSE ON HALLECK STREET
PRESIDIO OF SAN FRANCISCO

BLDG. NO. 223

2. SAN FRANCISCO, CALIFORNIA

3. NATIONAL PARK SERVICE PHOTO BY GORDON CHAPPELL

4. JUNE 1989

5. NEGATIVE AT NATIONAL PARK SERVICE WESTERN REGIONAL OFFICE

6. STOREHOUSE NO. 223, NOW USED AS OFFICES, BUILT IN 1897

VIEW TOWARD SOUTHEAST

7. PHOTO NO. 20 OF 78

Photo by
Gordon Chappell

JUN 1989



PULMONO COLLECTING OFFICE

DO NOT ENTER

1. OFFICES OF HOUSING DIVISION
PRESIDIO OF SAN FRANCISCO
2. SAN FRANCISCO, CALIFORNIA
3. NATIONAL PARK SERVICE PHOTO BY GORDON CHAPPELL
4. JUNE 1989
5. NEGATIVE AT NATIONAL PARK SERVICE
WESTERN REGIONAL OFFICE
6. BUILDING NO. 227, BUILT 1897
AS A STOREHOUSE. VIEW
TOWARD NORTHEAST.
7. PHOTO NO. 21 OF 78

**Photo by
Gordon Chappell**

JUN 1989



1. BAKERY
PRESIDIO OF SAN FRANCISCO
2. SAN FRANCISCO, CALIFORNIA
3. NATIONAL PARK SERVICE PHOTO BY GORDON CHAPPELL
4. JUNE 1989
5. NEGATIVE AT NATIONAL PARK SERVICE WESTERN REGIONAL OFFICE
6. OLD BAKERY, BUILDING NO. 228, NOW A CLEANER'S
BUILT 1909, VIEW TOWARD NORTHEAST
7. PHOTO NO. 22 OF 78

BLDG. NO. 227

**Photo by
Gordon Chappell**

JUN 1989



(699-324-15) (4-11-25-11A) (12-1500)

1. INFANTRY TERRACE - ARGUELLO BOULEVARD QUARTERS
PRESIDIO OF SAN FRANCISCO
2. SAN FRANCISCO
3. U.S. ARMY PHOTO
4. APRIL 11, 1925 11 A.M.
5. COPY NEGATIVE AT NATIONAL PARK SERVICE
WESTERN REGIONAL OFFICE
6. INFANTRY TERRACE COMPLEX OF
OFFICERS' QUARTERS, BUILT 1910.
SINCE THIS PHOTO GARAGES WERE ADDED
BEHIND THEM AND WPA STONE RETAINING
WALLS IN FRONT, BOTH IN THE 1930S,
THEY REMAIN OTHERWISE UNCHANGED
EXCEPT GROWTH OF VEGETATION PRECLUDES
DUPLICATING THIS VIEW TODAY.
VIEW TOWARD SOUTHWEST
7. BUILDINGS NOS. 325 THRU 345 (RIGHT TO LEFT AROUND THE "S")
7. PHOTO NO. 23 OF 78



1. OFFICERS' DUPLEXES ON INFANTRY TERRACE BLDGS. NOS. 328, 329
PRESIDIO OF SAN FRANCISCO
2. SAN FRANCISCO, CALIFORNIA
3. NATIONAL PARK SERVICE PHOTO BY GORDON CHAPPELL
4. APRIL 1992
5. NEGATIVE AT NATIONAL PARK SERVICE WESTERN REGIONAL OFFICE
6. OFFICERS' QUARTERS (LEFT TO RIGHT) NOS. 329, 328
BUILT IN 1910, VIEW TOWARD NORTHWEST
7. PHOTO NO. 24 OF 78



1. FIELD GRADE OFFICER'S QUARTERS
PRESIDIO OF SAN FRANCISCO
2. SAN FRANCISCO, CALIFORNIA
3. NATIONAL PARK SERVICE PHOTO BY GORDON CHAPPELL
4. APRIL 1992
5. NEGATIVE AT NATIONAL PARK SERVICE WESTERN REGIONAL OFFICE
6. BUILDING NO. 341, PROBABLY INTENDED AS A REGIMENTAL
OR POST COMMANDER'S (COLONEL'S) RESIDENCE; BUILT 1910
AT INTERSECTION OF ARGUELLO BOULEVARD AND INFANTRY TERRACE
7. PHOTO NO. 25 OF 78

BLDG. NO. 341



1. OFFICERS' QUARTERS ON ARGUELLO BOULEVARD BLDGS OF 342-345
PRESIDIO OF SAN FRANCISCO
2. SAN FRANCISCO, CALIFORNIA
3. NATIONAL PARK SERVICE PHOTO BY GORDON CHAPPELL
4. APRIL 1992
5. NEGATIVE AT NATIONAL PARK SERVICE WESTERN REGIONAL OFFICE
6. LEFT TO RIGHT, BUILDINGS NOS. 345, 344, 343, 342, BUILT 1910
VIEW TOWARD WEST-SOUTHWEST
7. PHOTO NO. 26 OF 78



1. PRESIDIO BOULEVARD GATE
PRESIDIO OF SAN FRANCISCO
2. SAN FRANCISCO, CALIFORNIA
3. PHOTO BY GORDON CHAPPELL
4. SEPTEMBER 1990
5. NEGATIVE AT NATIONAL PARK SERVICE
WESTERN REGIONAL OFFICE
6. PRESIDIO BOULEVARD GATE AND
PLANTATIONS OF CYPRESS AND EUCALYPTUS
TREES, ALL FROM THE 1890S, - STRUCTURE NO 574

VIEW TOWARD NORTH FROM OUTSIDE THE PRESIDIO
AT JUNCTION OF PRESIDIO BLVD. AND PACIFIC AVENUE
7. PHOTO NO. 27 OF 78



1. MAIN GATE
PRESIDIO OF SAN FRANCISCO
2. SAN FRANCISCO, CALIFORNIA
3. NATIONAL PARK SERVICE PHOTO
BY GORDON CHAPPELL
4. JUNE 1990
5. NEGATIVE AT NATIONAL PARK SERVICE
WESTERN REGIONAL OFFICE
6. LOMBARD STREET GATE, BUILT 1897
VIEW TOWARD WEST OF STRUCTURE NO. 575
(ARGUELLO GATE HAS SIMILAR STONE POSTS)
7. PHOTO NO. 28 OF 78



[NO. 3202]

1. NATIONAL CEMETERY NORTH GATE
PRESIDIO OF SAN FRANCISCO
2. SAN FRANCISCO, CALIFORNIA
3. NATIONAL PARK SERVICE PHOTO BY
GORDON CHAPPELL
4. JUNE 1990
5. NEGATIVE AT NATIONAL PARK SERVICE
WESTERN REGIONAL OFFICE
6. SAN FRANCISCO NATIONAL CEMETERY
OLD CAST IRON MAIN GATE C. 1885,
RELOCATED C. 1931 AS THE NORTH GATE - [STRUCTURE 3202]
VIEW TOWARD NORTHEAST
7. PHOTO NO, 30 OF 98



1. STABLES FOR 102 ANIMAS EACH
PRESIDIO OF SAN FRANCISCO
2. SAN FRANCISCO, CALIFORNIA
3. NATIONAL PARK SERVICE PHOTO
BY JET LOWE
4. SEPTEMBER 1981
5. NEGATIVE AT NATIONAL PARK SERVICE
WESTERN REGIONAL OFFICE
6. STABLES (LEFT TO RIGHT) Nos. 668 (BUILT IN 1914) 663 (BUILT IN 1919),
661 (BUILT IN 1913), 662 (BUILT IN 1914) AND 667 (BUILT IN 1914),
VIEW TOWARD WEST-NORTHWEST
7. PHOTO NO. 31 OF 78

BLDGs, NOS. 661-663,
667, 668



1. CAVALRY BARRACKS MESS HALL CEILING
PRESIDIO OF SAN FRANCISCO
2. SAN FRANCISCO, CALIFORNIA
3. NATIONAL PARK SERVICE PHOTO
BY GORDON CHAPPELL
4. JUNE 1990
5. NEGATIVE AT NATIONAL PARK SERVICE
WESTERN REGIONAL OFFICE
6. CAVALRY BARRACKS NO. 682, BUILT 1902;
DETAIL OF PRESSED METAL CEILING,
CAST IRON CORINTHIAN COLUMN, IN INTERIOR
7. PHOTO NO. 32 OF 78



1. WEST CANTONMENT ENLISTED FAMILY DUPLEXES
PRESIDIO OF SAN FRANCISCO BLDGS. NOS. 745, 747, 749, 751
2. SAN FRANCISCO, CALIFORNIA
3. NATIONAL PARK SERVICE PHOTO BY GORDON CHAPPELL
4. APRIL 1992
5. NEGATIVE AT NATIONAL PARK SERVICE WESTERN REGIONAL OFFICE
6. DUPLEXES ON PORTOLA STREET, LEFT TO RIGHT NOS.
751, 749, 747, 745; 751 BUILT 1939, THE OTHERS 1933
NOTE ALTERNATING STYLES OF SQUARED VERSUS ARCHED ENTRANCES
AND GABLE VERSUS HIPPED ROOFS; 751 HAS NO ENCLOSED FRONT PORCH
VIEW TOWARD SOUTH
7. PHOTO NO. 33 OF 78



1. PRESIDIO FOREST
PRESIDIO OF SAN FRANCISCO
2. SAN FRANCISCO, CALIFORNIA
3. PHOTO BY GORDON CHAPPELL
4. JUNE 1990
5. NEGATIVE AT NATIONAL PARK SERVICE
WESTERN REGIONAL OFFICE
6. A PLANTATION OF TREES BETWEEN
LOVERS' LANE AND PRESIDIO BLVD.
NORTH OF WEST PACIFIC AVENUE

VIEW TOWARD NORTH-NORTHWEST

7. PHOTO NO. 34 OF 78



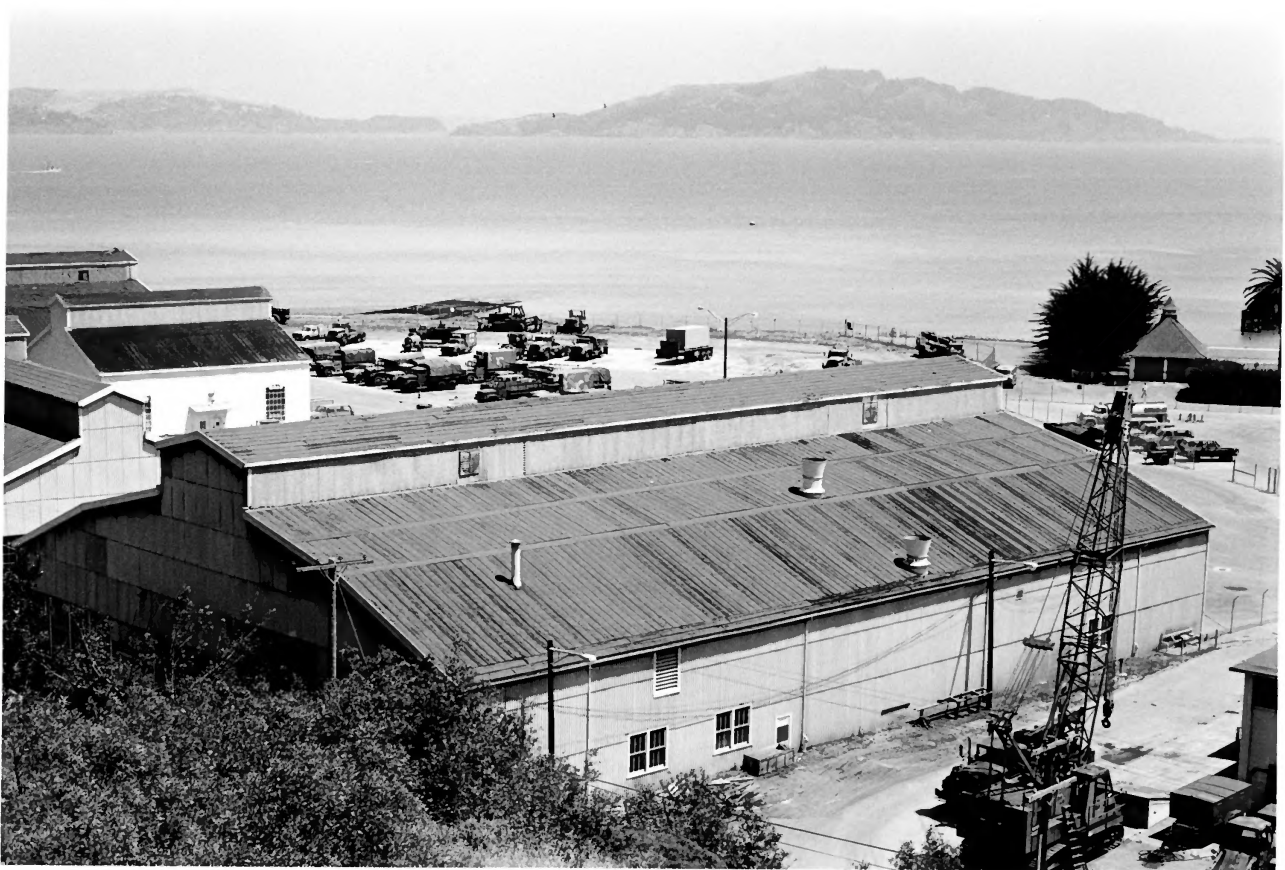
1. CRISSY FIELD BUILDINGS - 7 OF 4
PRESIDIO OF SAN FRANCISCO
2. SAN FRANCISCO, CALIFORNIA
3. NATIONAL PARK SERVICE PHOTO BY GORDON CHAPPELL
4. AUGUST 1991
5. NEGATIVE AT NATIONAL PARK SERVICE WESTERN REGIONAL OFFICE
6. CRISSY FIELD BUILDINGS, COUNTERCLOCKWISE FROM LOWER LEFT:
 - A. PARACHUTE SHOP NO. 920 (1921)
 - B. ADMINISTRATION BUILDING NO. 651 (TILE ROOF) (1921)
 - C. ENLISTED BARRACKS WITH MESS NO. 650 (LARGE, TILE ROOF) (1921)
NOW OFFICES, NOW NAMED STILWELL HALL
 - D. ARMY RESERVES, NO. 649 (1951) NONCONTRIBUTING
 - E. UNIT MOTOR POOL NO. 644 (1951) NONCONTRIBUTING (2 BAYS SIDE BY SIDE)
 - F. AIRCRAFT HANGAR NO. 643 (1923) (2 BAYS END TO END)VIEW FROM SOUTHWEST
7. PHOTO NO. 35 OF 78

BLDGS. NOS. 643, 644,
649, 650, 651, 920.



BLDGS NOS. 901-919, 924

1. CRISSY FIELD 2 OF 4
PRESIDIO OF SAN FRANCISCO
2. SAN FRANCISCO, CALIFORNIA
3. NATIONAL PARK SERVICE PHOTO BY GORDON CHAPPELL
4. AUGUST 1991
5. NEGATIVE AT NATIONAL PARK SERVICE WESTERN REGIONAL OFFICE
6. AT LOWER LEFT, SHOP BUILDING NO. 924, BUILT IN 1951, NONCONTRIBUTING
ABOVE IT AT LEFT, COMPLEX OF WORLD WAR II "TEMPORARY"
BARRACKS, ETC. BUILT 1941 (BLDGS. 901-919)
VIEW TOWARD EAST.
7. PHOTO NO. 36 OF 78



1. CRISSY FIELD, BLDG, NO, 926 3 OF 4
PRESIDIO OF SAN FRANCISCO
2. SAN FRANCISCO, CALIFORNIA
3. NATIONAL PARK SERVICE PHOTO BY GORDON CHAPPELL
4. JULY 1991
5. NEGATIVE AT NATIONAL PARK SERVICE WESTERN REGIONAL OFFICE
6. CRISSY ARMY AIRFIELD HANGAR NO, 926 BUILT 1921
VIEW NORTHEAST
7. PHOTO NO. 37 OF 78



1. CRISSY FIELD 4 OF 4 BLDGS. NOS. 926, 933, 935, 937
PRESIDIO OF SAN FRANCISCO
2. SAN FRANCISCO, CALIFORNIA
3. NATIONAL PARK SERVICE PHOTO BY GORDON CHAPPELL
4. AUGUST 1991
5. NEGATIVE AT NATIONAL PARK SERVICE WESTERN REGIONAL OFFICE
6. CRISSY FIELD BUILDINGS BUILT 1921, LEFT TO RIGHT:
- A. HANGAR NO. 937
 - B. DUPE SHOP AND BOILER HOUSE NO. 933
 - C. AERO STOREHOUSE NO. 935
 - D. HANGAR NO. 926
- VIEW TOWARD NORTH-NORTHEAST
7. PHOTO NO. 38 OF 78



1. CRISSY FIELD PILOTS' QUARTERS BLDGS, NOS, 959-964
PRESIDIO OF SAN FRANCISCO
2. SAN FRANCISCO, CALIFORNIA
3. PHOTO BY GORDON CHAPPELL
4. JUNE 1990
5. NEGATIVE AT NATIONAL PARK SERVICE
WESTERN REGIONAL OFFICE
6. OFFICERS' (PILOTS') QUARTERS, CRISSY
ARMY AIRFIELD, LEFT TO RIGHT: NOS. 959-964,
BUILT IN 1921.

VIEW TOWARD SOUTHWEST
7. PHOTO NO. 39 OF 78



- BLDG. NO. 1000-1004
1. LETTERMAN HOSPITAL OFFICERS' QUARTERS
PRESIDIO OF SAN FRANCISCO
 2. SAN FRANCISCO, CALIFORNIA
 3. PHOTO BY GORDON CHAPPELL
 4. AUGUST 1990
 5. NEGATIVE AT NATIONAL PARK SERVICE
WESTERN REGIONAL OFFICE
 6. LETTERMAN ARMY MEDICAL CENTER OFFICERS' ROW,
LEFT TO RIGHT BLDGS. NOS. 1000, 1001 (BUILT 1902)
1002, 1003, 1004 (BUILT 1908); BLDG. NO. 1000 WAS
TRADITIONALLY COMMANDING OFFICERS OR COMMANDING GENERAL'S
VIEW TOWARD NORTH
 7. PHOTO NO. 41 OF 78



1. LETTERMAN ARMY HOSPITAL WARDS
PRESIDIO OF SAN FRANCISCO
2. SAN FRANCISCO, CALIFORNIA
3. NATIONAL PARK SERVICE PHOTO BY GORDON CHAPPELL
4. JULY 1991
5. NEGATIVE AT NATIONAL PARK SERVICE WESTERN REGIONAL OFFICE
6. LETTERMAN ARMY HOSPITAL BUILDINGS
BUILT 1924, 1933, 1931
VIEW TOWARD EAST OF BLDGS, NOS. 1014, 1013, 1012 (LEFT TO RIGHT)
7. PHOTO NO. 42 OF 78

BLDGS NOS. 1012-
1014



1. LETTERMAN ARMY HOSPITAL ADMINISTRATION BUILDING (ORIGINAL HEADQUARTERS)
PRESIDIO OF SAN FRANCISCO BLDG. NO. 1016
2. SAN FRANCISCO, CALIFORNIA
3. PHOTO BY GURDON CHAPPELL
4. SEPTEMBER 1990
5. NEGATIVE AT NATIONAL PARK SERVICE
WESTERN REGIONAL OFFICE
6. LETTERMAN ARMY MEDICAL CENTER
ADMINISTRATION BUILDING, BUILT IN 1899
- PART OF ARMY'S FIRST GENERAL HOSPITAL
VIEW TOWARD EAST OF BLDG. NO. 1016
7. PHOTO NO. 43 OF 78



1. LETTERMAN ARMY HOSPITAL BUILDINGS
PRESIDIO OF SAN FRANCISCO, CALIFORNIA
BLDGS. NOS. 1047,
1050, 1056, 1059,
1060, 1062
2. SAN FRANCISCO, CALIFORNIA
3. NATIONAL PARK SERVICE PHOTO BY GORDON CHAPPELL
4. AUGUST 1990
5. NEGATIVE AT NATIONAL PARK SERVICE WESTERN REGIONAL OFFICE
6. LETTERMAN ARMY HOSPITAL - LEFT TO RIGHT
BLDGS. NOS. 1051, 1050, 1047 - ON RIGHT SIDE OF STREET;
NOS. 1062, 1060, 1059, 1056
- A STREETScape OF MOSTLY "INDUSTRIAL" -TYPE BUILDINGS
VIEW NORTHWEST DOWN THORNBURG ROAD
7. PHOTO NO. 44 OF 78



1. LETTERMAN ARMY HOSPITAL
PRESIDIO OF SAN FRANCISCO
2. SAN FRANCISCO, CALIFORNIA
3. NATIONAL PARK SERVICE PHOTO BY GORDON CHAPPELL
4. FEBRUARY 1992
5. NEGATIVE AT NATIONAL PARK SERVICE WESTERN REGIONAL OFFICE
6. HOSPITAL BUILDING NO. 1100, BUILT IN 1969, AND
LETTERMAN ARMY HOSPITAL FLAGSTAFF (NON-CONTRIBUTING
TO THE NHL) VIEWED FROM THE SOUTH
7. PHOTO NO. 45 OF 78
- BLDG. NO. 1100



1. GORGAS AVENUE WAREHOUSES
PRESIDIO OF SAN FRANCISCO

BLDGS. NOS, 1161, 1162, 1163, 1167

2. SAN FRANCISCO, CALIFORNIA

3. PHOTO BY GORDON CHAPPELL

4. JUNE 1990

5. NEGATIVE AT NATIONAL PARK SERVICE
WESTERN REGIONAL OFFICE

6. "TEMPORARY" WAREHOUSES, BUILT 1919

VIEW TOWARD EAST-SOUTHEAST OF
BLDGS. NOS, (LEFT TO RIGHT) 1167,
1163, 1162, 1161 DN GORGAS AVENUE

7. PHOTO NO. 46 OF 78

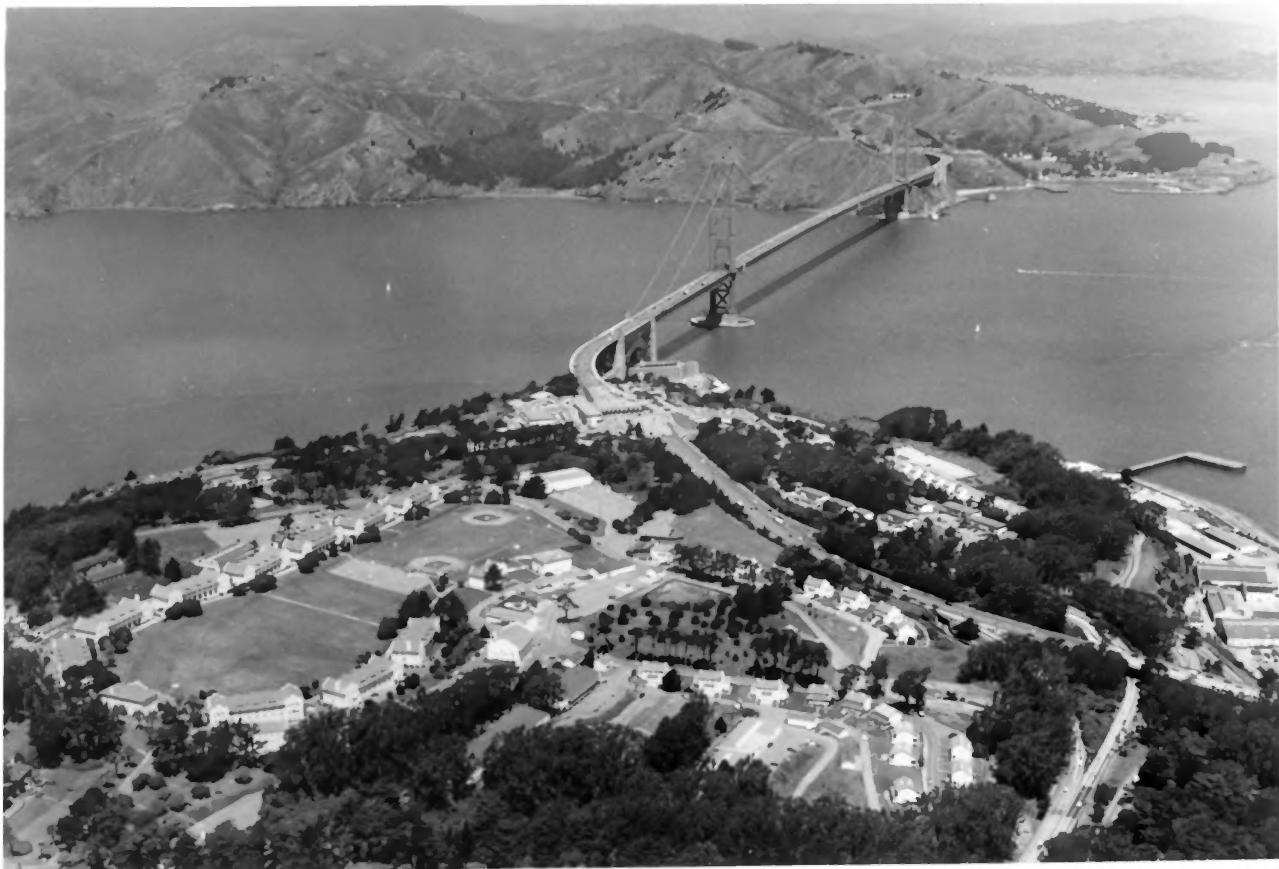


1. A GORGAS AVENUE WAREHOUSE
PRESIDIO OF SAN FRANCISCO
2. SAN FRANCISCO, CALIFORNIA
3. NATIONAL PARK SERVICE PHOTO BY GORDON CHAPPELL
4. JUNE 1990
5. NEGATIVE AT NATIONAL PARK SERVICE WESTERN REGIONAL OFFICE
6. WAREHOUSE NO. 1162, BUILT 1919
VIEW TOWARD EAST
7. PHOTO NO. 47 OF 78

BLDG, NO, 1162



1. DETAIL OF A WOOD FRAME WAREHOUSE
PRESIDIO OF SAN FRANCISCO
 2. SAN FRANCISCO, CALIFORNIA
 3. PHOTO BY GORDON CHAPPELL
 4. JUNE 1990
 5. NEGATIVE AT NATIONAL PARK SERVICE
WESTERN REGIONAL OFFICE
 6. DETAIL OF LOADING DOCK OF
WAREHOUSE NO. 1162, BUILT IN 1919,
ON GORGAS AVENUE
- VIEW TOWARD EAST OF BLDG. NO. 1162
7. PHOTO NO. 48 OF 78



1. FORT WINFIELD SCOTT AND THE GOLDEN GATE BRIDGE 1200-SERIES BUILDINGS
PRESIDIO OF SAN FRANCISCO
2. SAN FRANCISCO, CALIFORNIA
3. U.S. ARMY PHOTO
4. 1989
5. COPY NEGATIVE AT NATIONAL PARK SERVICE
WESTERN REGIONAL OFFICE
6. VIEW TOWARD NORTHWEST OF FORT POINT AND THE GOLDEN GATE STRAIT,
AND THE NORTHERN PART OF FORT WINFIELD SCOTT AND
THE WESTERN END OF CRISSY FIELD. NOTE GOLDEN GATE BRIDGE.
7. PHOTO NO. 99 OF 98



BLDGS. NOS. 1216, 1217, 1218

1. FORT WINFIELD SCOTT 1 OF 5
PRESIDIO OF SAN FRANCISCO
2. SAN FRANCISCO, CALIFORNIA
3. NATIONAL PARK SERVICE PHOTO
BY GORDON CHAPPELL
4. JULY 1991
5. NEGATIVE AT NATIONAL PARK SERVICE
WESTERN REGIONAL OFFICE
6. FORT WINFIELD SCOTT PARADE GROUND AND
(LEFT TO RIGHT) BLDGS, NOS, 1216, 1217, 1218,
TWO BARRACKS AND A MESS HALL - VIEW TOWARD SOUTHEAST
7. PHOTO NO, 50 OF 98



1. FORT WINFIELD SCOTT 2 OF 5 BLDGS 1216, 1217, 1218
PRESIDIO OF SAN FRANCISCO
2. SAN FRANCISCO, CALIFORNIA
3. NATIONAL PARK SERVICE PHOTO
BY GORDON CHAPPELL
4. JULY 1991
5. NEGATIVE AT NATIONAL PARK SERVICE
WESTERN REGIONAL OFFICE
6. FORT WINFIELD SCOTT PARADE GROUND AND
(LEFT TO RIGHT) BLDGS, NOS. 1216, 1217, 1218
TWO BARRACKS AND A MESS HALL - VIEW TOWARD SOUTHEAST
7. PHOTO NO. 51 OF 78



1. FORT WINFIELD SCOTT PARADE GROUND - 3 OF 5
PRESIDIO OF SAN FRANCISCO - BLOGS. NOS. 1218, 1201, 1202
2. SAN FRANCISCO, CALIFORNIA
3. NATIONAL PARK SERVICE PHOTO BY GORDON CHAPPELL
4. JUNE 1992
5. NEGATIVE AT NATIONAL PARK SERVICE WESTERN REGIONAL OFFICE
6. LEFT TO RIGHT, BARRACKS NO. 1218, HEADQUARTERS NO. 1201,
BARRACKS NO. 1202 - VIEW DUE SOUTH
7. PHOTO NO. 52 OF 78



1. FORT WINFIELD SCOTT 4 OF 5 BLDGS. NOS. 1202-1204
PRESIDIO OF SAN FRANCISCO
2. SAN FRANCISCO, CALIFORNIA
3. NATIONAL PARK SERVICE PHOTO BY GORDON CHAPPELL
4. JUNE 1992
5. NEGATIVE AT NATIONAL PARK SERVICE WESTERN REGIONAL OFFICE
6. FORT WINFIELD SCOTT BARRACKS (LEFT TO RIGHT) 1202, 1203, 1204
VIEW TOWARD SOUTH-SOUTHWEST; NO. 1204 BUILT IN 1911, OTHERS, 1910
7. PHOTO NO. 53 OF 78



1. FORT WINFIELD SCOTT 5 OF 5 BLDGS. NOS. 1203, 1204, 1205
PRESIDIO OF SAN FRANCISCO
2. SAN FRANCISCO, CALIFORNIA
3. NATIONAL PARK SERVICE PHOTO BY GORDON CHAPPELL
4. JUNE 1992
5. NEGATIVE AT NATIONAL PARK SERVICE WESTERN REGIONAL OFFICE
6. BARRACKS (LEFT TO RIGHT) NOS. 1203, 1204, 1205
7. PHOTO NO. 54 OF 78



1. FORT WINFIELD SLOTT DUPLEX FOR TWO ENLISTED PERSONNEL AND
THEIR FAMILIES BLDG. NO. 1251
PRESIDIO OF SAN FRANCISCO
2. SAN FRANCISCO, CALIFORNIA
3. NATIONAL PARK SERVICE PHOTO BY GORDON CHAPPELL
4. JULY 1992
5. NEGATIVE AT NATIONAL PARK SERVICE WESTERN REGIONAL OFFICE
6. BUILDING NO. 1261 ON RUCKMAN AVENUE, BUILT 1909
VIEW TOWARD SOUTHWEST
7. PHOTO NO. 55 OF 78



1. FORT WINFIELD SCOTT ENLISTED FAMILY HOUSING
PRESIDIO OF SAN FRANCISCO BLDGS. NOS. 1261, 1262, 1265, 1266
2. SAN FRANCISCO, CALIFORNIA
3. NATIONAL PARK SERVICE PHOTO BY GORDON CHAPPELL
4. JULY 1992
5. NEGATIVE AT NATIONAL PARK SERVICE WESTERN REGIONAL OFFICE
6. LEFT TO RIGHT, BLDGS. NOS. 1261, 1262, 1265, 1266
ON RUCKMAN AVENUE, VIEW TOWARD SOUTH - BUILT IN 1909
7. PHOTO NO 56 OF 78



1. FORT WINFIELD SCOTT SOLDIERS' DUPLEX BLDG. NO. 1270
PRESIDIO OF SAN FRANCISCO
2. SAN FRANCISCO, CALIFORNIA
3. NATIONAL PARK SERVICE PHOTO BY GORDON CHAPPELL
4. JULY 1992
5. NEGATIVE AT NATIONAL PARK SERVICE, WESTERN REGIONAL OFFICE
6. VIEW TOWARD SOUTHEAST OF ENLISTED FAMILY HOUSING DUPLEX NO. 1270
ON RUCKMAN AVENUE, BUILT 1921
7. PHOTO NO. 57 OF 78



1. ENLISTED FAMILY HOUSING
FORT WINFIELD SCOTT
PRESIDIO OF SAN FRANCISCO
 2. SAN FRANCISCO, CALIFORNIA
 3. NATIONAL PARK SERVICE PHOTO BY GORDON CHAPPELL
 4. MAY 1992
 5. NEGATIVE AT NATIONAL PARK SERVICE WESTERN REGIONAL OFFICE
 6. VIEW SOUTHEAST OF MARRIED ENLISTED MEN'S DUPLEXES NOS,
1272 (LEFT) AND 1273 AT INTERSECTION OF STOREY ROAD
AND RUCKMAN AVENUE, BUILT IN 1912
 7. PHOTO NO. 58 OF 78
- BLDGS. NO, 1272,
1273



1. ENLISTED FAMILY HOUSING ON RUCKMAN AVENUE
FORT WINFIELD SCOTT BLDGS, NOS, 1275
PRESIDIO OF SAN FRANCISCO 1276, 1277
2. SAN FRANCISCO, CALIFORNIA
3. NATIONAL PARK SERVICE PHOTO BY GORDON CHAPPELL
4. MAY 1992
5. NEGATIVE AT NATIONAL PARK SERVICE WESTERN REGIONAL OFFICE
6. DUPLEXES FOR MARRIED ENLISTED PERSONNEL BUILT IN 1933,
NOS. (LEFT TO RIGHT) 1275, 1276, 1277, VIEW TOWARD SOUTHWEST
NOTE. STATELY ROW OF MONTEREY CYPRESS TREES ABOUT 60 YEARS
OLD
7. PHOTO NO. 59 OF 78



1. KOBBE AVENUE OFFICERS' QUARTERS
PRESIDIO OF SAN FRANCISCO

BLDGs. NOS. 1302, 1304
1308, 1310

2. SAN FRANCISCO, CALIFORNIA

3. NATIONAL PARK SERVICE PHOTO BY JET LOWE

4. SEPTEMBER 1981

5. NEGATIVE AT NATIONAL PARK SERVICE WESTERN REGIONAL OFFICE

6. OFFICERS' QUARTERS (LEFT TO RIGHT) NOS. 1302 AND 1304 (BUILT IN
1902), 1308 AND 1310 (BUILT IN 1909) VIEW TOWARD SOUTH

7. PHOTO NO. 60 OF 78



1. FORT WINFIELD SCOTT OFFICERS' ROW, KOBBE AVENUE
PRESIDIO OF SAN FRANCISCO

BLDG. NO. 1304

2. SAN FRANCISCO, CALIFORNIA

3. NATIONAL PARK SERVICE PHOTO BY
GORDON CHAPPELL

4. JUNE 1989

5. NEGATIVE AT NATIONAL PARK SERVICE
WESTERN REGIONAL OFFICE

6. DUPLEX OFFICERS' QUARTERS NO. 1304
ON KOBBE AVENUE, BUILT 1902, VIEW TOWARD SOUTH

7. PHOTO NO. 61 OF 78



1. FORT. WINFIELD SCOTT OFFICERS' ROW, KOBBE AVENUE
PRESIDIO OF SAN FRANCISCO

BLDGS. NOS.
1322, 1324, 1326, 1328

2. SAN FRANCISCO, CALIFORNIA

3. PHOTO BY GORDON CHAPPELL

4. JUNE 1990

5. NEGATIVE AT NATIONAL PARK SERVICE
WESTERN REGIONAL OFFICE

6. DUPLEX OFFICERS' QUARTERS ON KOBBE AVENUE
BUILT IN 1912

VIEW TOWARDS EAST OF (LEFT TO RIGHT)
BLDGS. NOS. 1322, 1324, 1326, 1328

7. PHOTO NO. 62 OF 78



1. FORT WINFIELD SCOTT OFFICERS' QUARTERS BLDG. NO. 1328
PRESIDIO OF SAN FRANCISCO
2. SAN FRANCISCO, CALIFORNIA
3. NATIONAL PARK SERVICE PHOTO BY GORDON CHAPPELL
4. APRIL 1971
5. NEGATIVE AT NATIONAL PARK SERVICE WESTERN REGIONAL OFFICE
6. A DUPLEX OFFICERS' QUARTERS ON KOBBE AVENUE BUILT IN 1912
VIEW TOWARD SOUTHWEST OF BLDG, NO. 1328
7. PHOTO NO. 63 OF 98

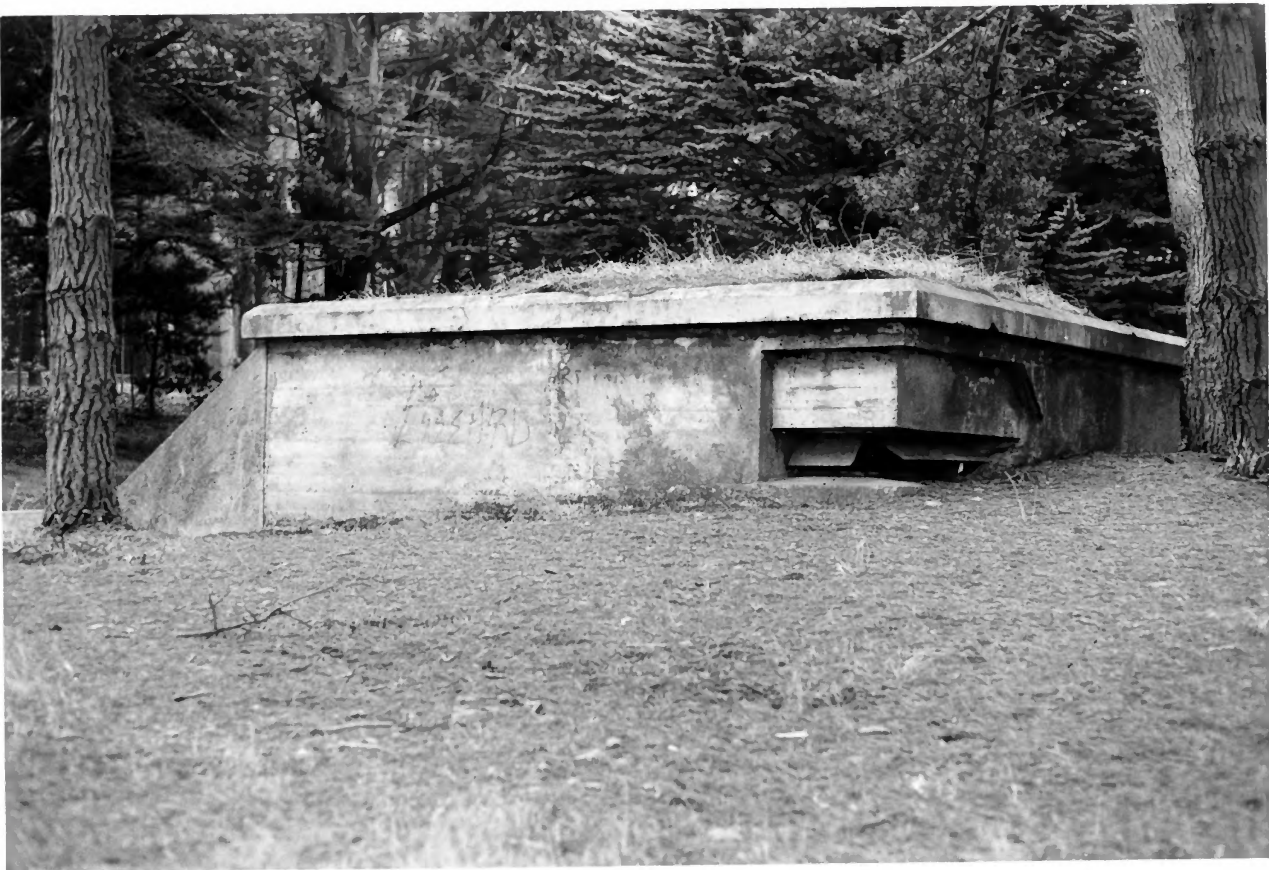


1. FORT WINFIELD SCOTT OFFICERS' QUARTERS
PRESIDIO OF SAN FRANCISCO
2. SAN FRANCISCO, CALIFORNIA
3. NATIONAL PARK SERVICE PHOTO
BY GORDON CHAPPELL
4. MARCH 1991
5. NEGATIVE AT NATIONAL PARK SERVICE
WESTERN REGIONAL OFFICE
6. OFFICERS' QUARTERS NO. 1334 ON KOBBE AVENUE,
BUILT 1912, VIEW TOWARD SOUTHWEST
7. PHOTO NO. 65 OF 78

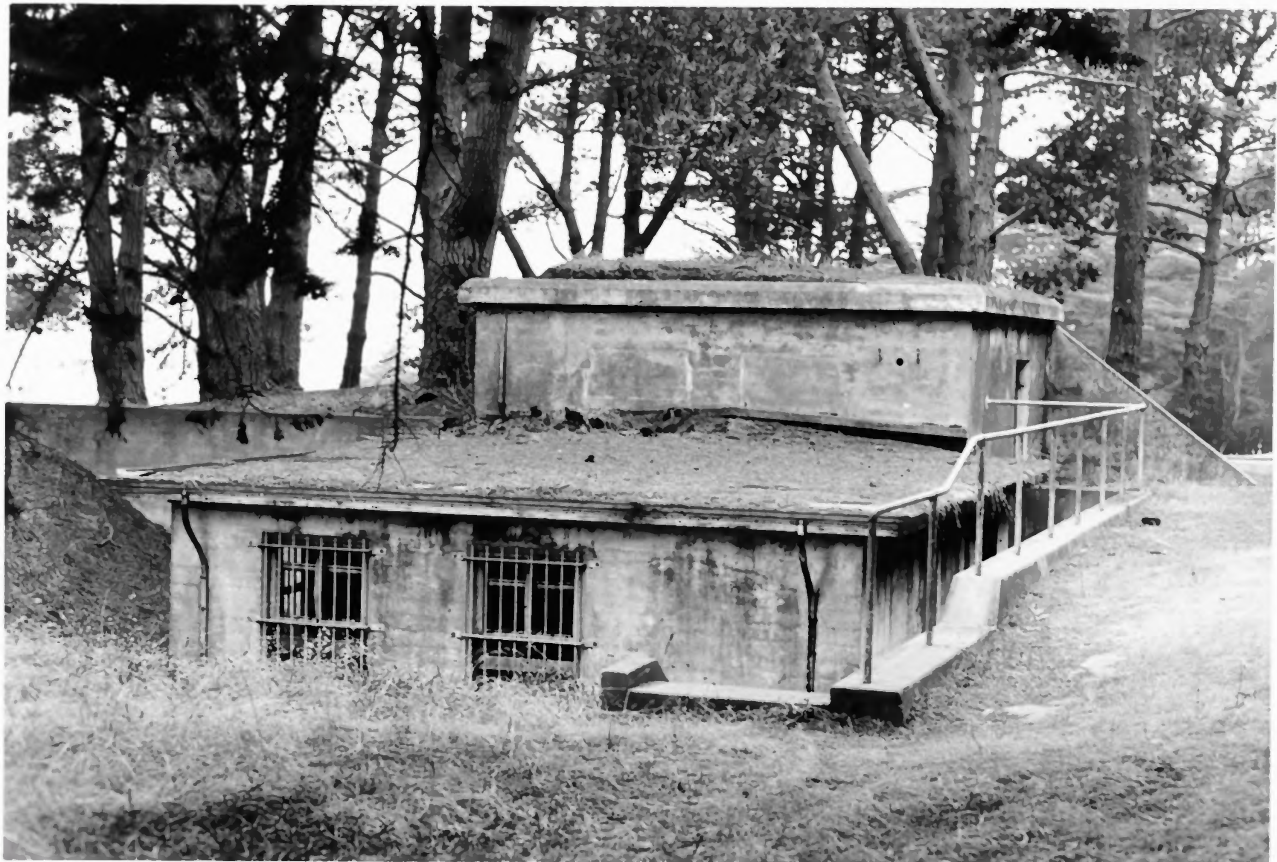
Greenough Ave



1. FORT WINFIELD SCOTT, KOBBE AVENUE STOREHOUSES
1. PRESIDIO OF SAN FRANCISCO
 2. SAN FRANCISCO, CALIFORNIA
 3. NATIONAL PARK SERVICE PHOTO
BY GORDON CHAPPELL
 4. JULY 1990
 5. NEGATIVE AT NATIONAL PARK SERVICE
WESTERN REGIONAL OFFICE
 6. VIEW EAST ON KOBBE AVENUE FROM
VICINITY OF GREENOUGH AVENUE.
LEFT TO RIGHT: BLDGS. NOS. 1339 (ORDNANCE
REPAIR SHOP), 1330 (BARNARD HALL), 1338 (STORAGE, BUILT 1902),
1334 (OFFICERS' QUARTERS, BUILT 1912, FRAGMENT VISIBLE THROUGH TREES),
1340 (ORDNANCE STORAGE, 1917, CORNER ONLY VISIBLE)
 7. PHOTO NO. 66 OF 98
- BLDGS. NOS. 1330
1334, 1338, 1339, 1340



1. FORT WINFIELD SCOTT BASE END STATION
PRESIDIO OF SAN FRANCISCO
2. SAN FRANCISCO, CALIFORNIA
3. NATIONAL PARK SERVICE PHOTO BY
GORDON CHAPPELL
4. JULY 1990
5. NEGATIVE AT NATIONAL PARK SERVICE
WESTERN REGIONAL OFFICE
6. FIRE CONTROL STATION FOR COAST ARTILLERY, WITH PLOTTING ROOM
BUILT 1911, FRONT VIEW - ON WASHINGTON BOULEVARD -
VIEW TOWARD SOUTHEAST OF BLDG. NO. 1344
7. PHOTO NO. 67 OF 98



1. FORT WINFIELD SCOTT, BASE END STATION
PRESIDIO OF SAN FRANCISCO
2. SAN FRANCISCO, CALIFORNIA
3. NATIONAL PARK SERVICE PHOTO BY
GORDON CHAPPELL
4. JULY 1990
5. NEGATIVE AT NATIONAL PARK SERVICE
WESTERN REGIONAL OFFICE
6. FIRE CONTROL STATION FOR COAST ARTILLERY
BUILT 1911, REAR VIEW - ON WASHINGTON BOULEVARD
VIEW TOWARD NORTHWEST OF BLDG. NO. 1344
7. PHOTO NO. 68 OF 78
- BLDG. NO. 1344



1. FORT WINFIELD SCOTT BATTERIES MCKINNON/STOTSENBERG BLDG. NO. 1430
PRESIDIO OF SAN FRANCISCO
2. SAN FRANCISCO, CALIFORNIA
3. NATIONAL PARK SERVICE PHOTO
BY GORDON CHAPPELL
4. AUGUST 1991
5. NEGATIVE AT NATIONAL PARK SERVICE
WESTERN REGIONAL OFFICE
6. MORTAR BATTERIES STOTSENBERG - MCKINNON BUILT 1898
VIEW FROM EAST - SOUTHEAST - STRUCTURE NO. 1430
7. PHOTO NO. 69 OF 78



1. FORT WINFIELD SCOTT, BATTERY CROSBY
PRESIDIO OF SAN FRANCISCO
2. SAN FRANCISCO, CALIFORNIA
3. NATIONAL PARK SERVICE PHOTO BY GORDON CHAPPELL
4. JUNE 1991
5. NEGATIVE AT NATIONAL PARK SERVICE WESTERN REGIONAL OFFICE
6. BATTERY CROSBY IN FOREGROUND, GOLDEN GATE STRAIT
AND BRIDGE IN BACKGROUND.
VIEW NORTH-NORTHEAST FROM BLDG. NO. 1630 TO
BLDG. NO. 999, FORT POINT, UNDER ARCH AT NEAR END OF BRIDGE
7. PHOTO NO. 70 OF 78
- BLDG. NO. 1630



1. FORT WINFIELD SCOTT, BATTERY GODFREY STRUCTURE NO. 1647
PRESIDIO OF SAN FRANCISCO
2. SAN FRANCISCO, CALIFORNIA
3. NATIONAL PARK SERVICE PHOTO BY GORDON CHAPPELL
4. SEPTEMBER 1990
5. NEGATIVE AT NATIONAL PARK SERVICE
WESTERN REGIONAL OFFICE
6. BATTERY GODFREY, BUILT 1892-1896
FIRST HEAVY CALIBER RIFLE (12-INCH, BARBETTE CARRIAGE)
BATTERY COMPLETED AND ARMED IN THE UNITED STATES
VIEW SOUTH OF STRUCTURE NO. 1647
7. PHOTO NO. 71 OF 78





1. FORT WINFIELD SCOTT, BATTERY BOUTELLE
PRESIDIO OF SAN FRANCISCO
2. SAN FRANCISCO, CALIFORNIA
3. NATIONAL PARK SERVICE PHOTO BY GORDON CHAPPELL
4. SEPTEMBER 1990
5. NEGATIVE AT NATIONAL PARK SERVICE WESTERN REGIONAL OFFICE
6. BATTERY BOUTELLE, BUILT 1898 FOR THREE 5-INCH PILLAR MOUNT
GUNS
VIEW WEST OF STRUCTURE NO, 1651
7. PHOTO NO, 73 OF 78

STRUCTURE NO. 1651



1. BATTERY MARCUS MILLER, FORT WINFIELD SCOTT STRUCTURE NO. 1660
PRESIDIO OF SAN FRANCISCO
2. SAN FRANCISCO, CALIFORNIA
3. NATIONAL PARK SERVICE PHOTO BY GORDON CHAPPELL
4. JUNE 1991
5. NEGATIVE AT NATIONAL PARK SERVICE WESTERN REGIONAL OFFICE
6. EMPLACEMENT FOR A 10-INCH BREECHLOADING RIFLE ON A
BUFFINGTON-CROZIER CARRIAGE; CONSTRUCTION BEGAN ON THIS
BATTERY ABOUT JUNE 2, 1891, AND IT IS BELIEVED
THE FIRST ENDICOTT-TYPE HEAVY CALIBER RIFLE BATTERY
TO BE COMMENCED IN THE UNITED STATES, THOUGH
NEARBY BATTERY GOOREY WAS COMPLETED FIRST,
ARMED IN 1897, VIEW TOWARD NORTH OF STRUCTURE NO. 1660.
7. PHOTO NO 74 OF 78



1. U.S. PUBLIC HEALTH SERVICE HOSPITAL
PRESIDIO OF SAN FRANCISCO

BLDG. NO. 1801,
STRUCTURES 1800, 1840

2. SAN FRANCISCO, CALIFORNIA

3. NATIONAL PARK SERVICE PHOTO BY GORDON CHAPPELL

4. MARCH 1992

5. NEGATIVE AT NATIONAL PARK SERVICE WESTERN REGIONAL OFFICE

6. HOSPITAL BUILDING NO. 1801 BUILT 1932 WITH WINGS
ADDED IN 1952 (CONTRIBUTING TO NHL, BUT FRONT WINGS
NON-CONTRIBUTING), FLAGPOLE NO. 1800, BUILT 1952
(NON-CONTRIBUTING), AND MAIN GATE AT 15TH AVENUE, NO. 1840
BUILT 1952 (NON-CONTRIBUTING) VIEW TOWARD NORTH

7. PHOTO NO. 95 OF 98



1. U. S. COAST GUARD LIFEBOAT STATION (STATION FORT POINT)
PRESIDIO OF SAN FRANCISCO
2. SAN FRANCISCO, CALIFORNIA
3. NATIONAL PARK SERVICE PHOTO BY GORDON CHAPPELL
4. JUNE 1990
5. NEGATIVE AT NATIONAL PARK SERVICE
WESTERN REGIONAL OFFICE
6. ALL BUILDINGS NORTH OF SHRUBBERY AND PALMS
ARE OLD U. S. COAST GUARD "STATION FORT POINT" PARTIALLY
ABANDONED 1990; TWO BUILDINGS TO LEFT OF
FLAGPOLE DATE FROM 1889-1890 U. S. LIFE SAVING
SERVICE'S FORT POINT LIFE SAVING STATION, FIRST
BUILDING TO RIGHT OF FLAGPOLE DATES FROM ABOUT 1915,
VIEW TOWARD NORTH-NORTHEAST IN PRESIDIO'S CRISSEY FIELD AREA
7. PHOTO NO. 76 OF 78.

NOTE - THIS PHOTO ALSO FITS BETWEEN
PHOTOS 36 AND 37 (THE CRISSEY FIELD SERIES)
BUT IS INCLUDED HERE TO ILLUSTRATE SEPARATELY
THE U. S. COAST GUARD COMPLEX



1. MOUNTAIN LAKE
PRESIDIO OF SAN FRANCISCO
2. SAN FRANCISCO, CALIFORNIA
3. NATIONAL PARK SERVICE PHOTO
BY GORDON CHAPPELL
4. MAY 1991
5. NEGATIVE AT NATIONAL PARK SERVICE
WESTERN REGIONAL OFFICE
6. MOUNTAIN LAKE NEAR WHICH ANZA CAMPED IN 1776
A NATURAL, SPRING-FED LAKE VIEW FROM SOUTH - NOTE PRESIDIO FOREST
7. PHOTO 77 OF 78



1. PRESIDIO GOLF COURSE
PRESIDIO OF SAN FRANCISCO
2. SAN FRANCISCO, CALIFORNIA
3. NATIONAL PARK SERVICE PHOTO
BY GORDON CHAPPELL
4. MAY 1991
5. NEGATIVE AT NATIONAL PARK SERVICE
WESTERN REGIONAL OFFICE
6. PRESIDIO GOLF COURSE, 9TH HOLE, VIEW TOWARD NORTHWEST
NOTE EUCALYPTUS (BLUE GUM) TREES AT RIGHT, MONTEREY CYPRESS AT LEFT
7. PHOTO NO. 78 OF 78