

PLAZA DEL PRECIDIO DE MONTE REY 290x455mm

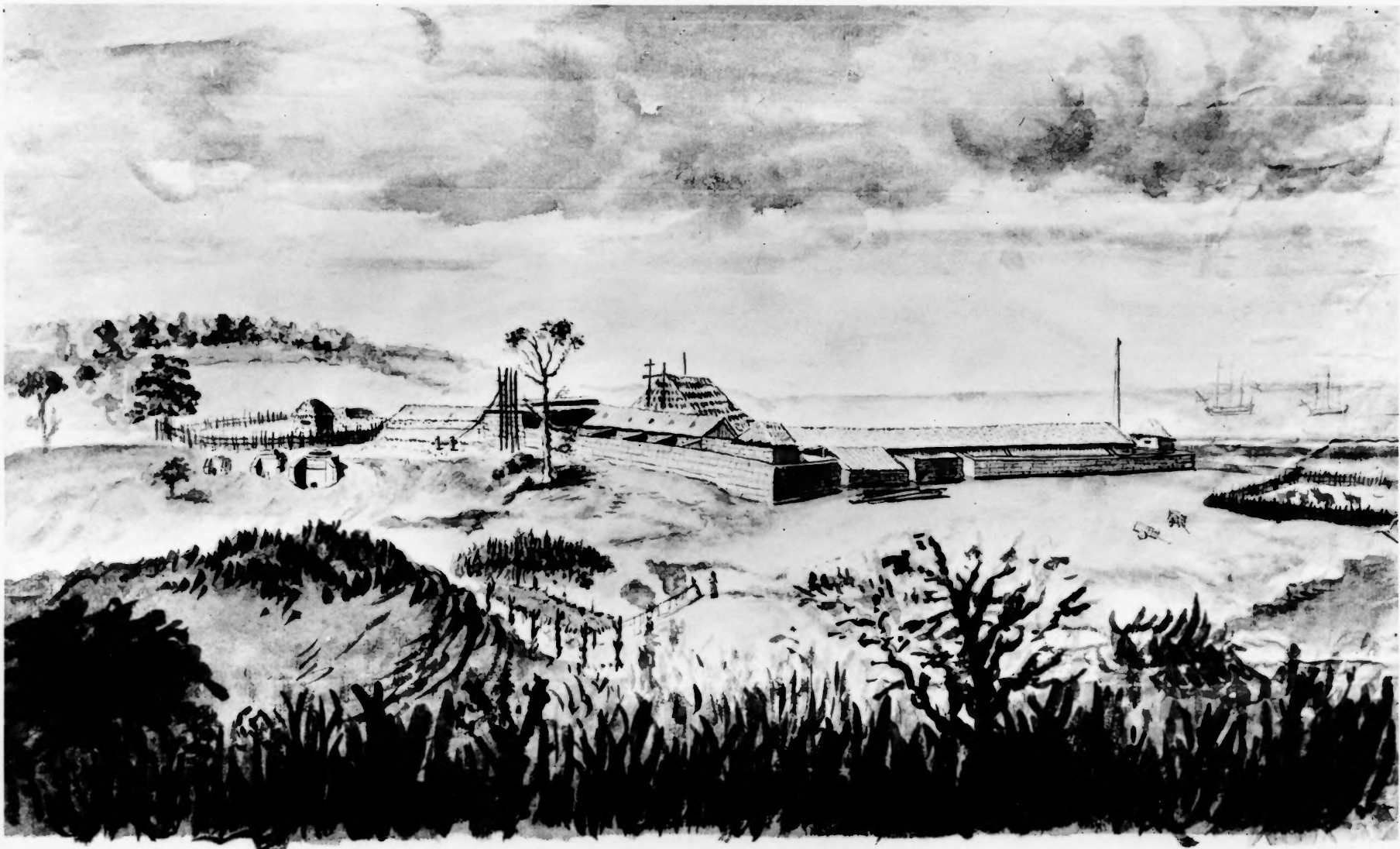
See p. 19, item 8

6. Royal Presidio Chapel and the Plaza of the Presidio of Monterey,
California, in 1791.

Drawn by José Cardero.

REGISTERED NATIONAL
HISTORIC LANDMARKS

From Donald C. Cutter, ed., Malaspina in California (San Francisco,
1960), page 18.



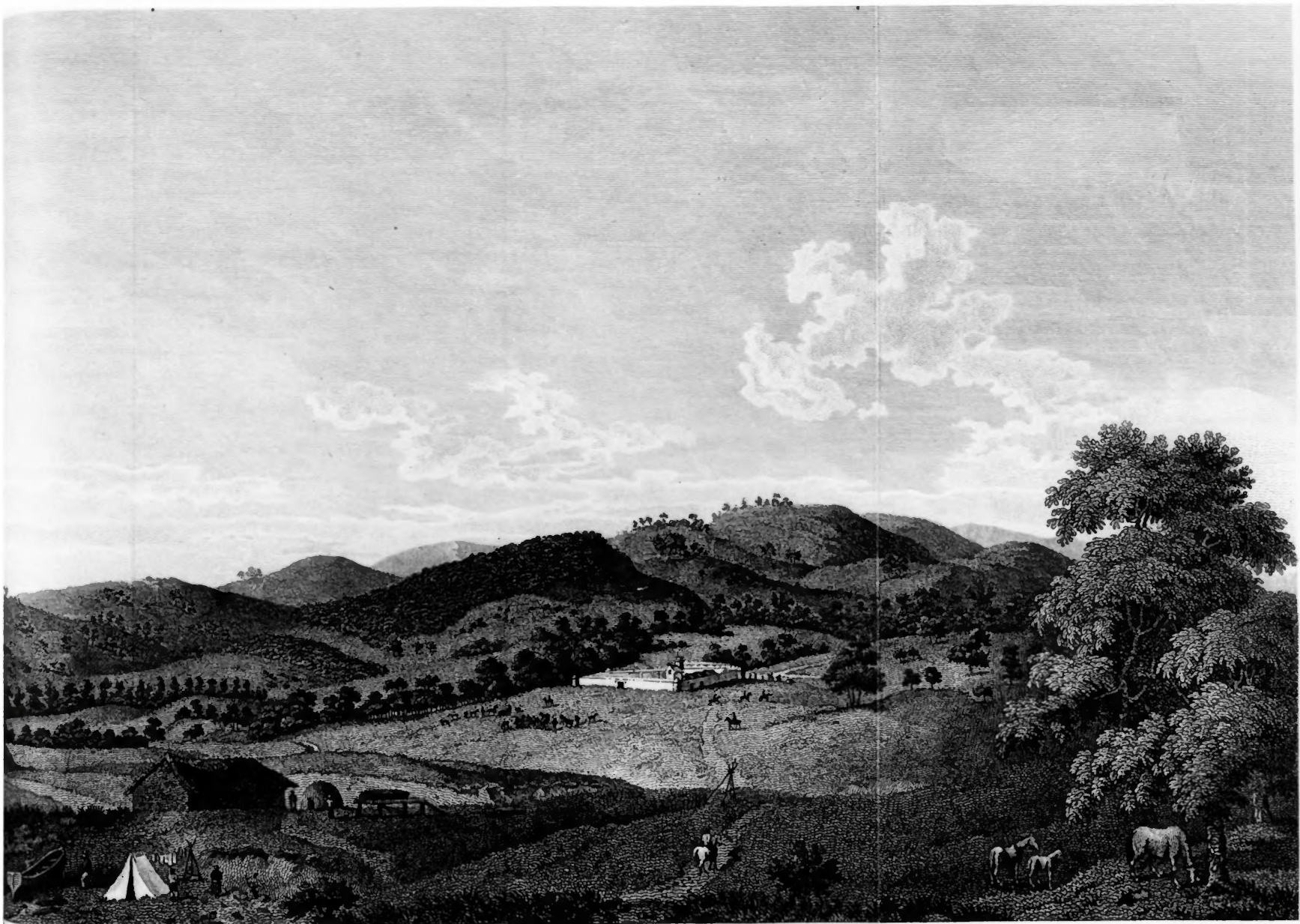
PRECIDIO DE MONTERREY 305x490mm

See p. 18, item 5

3. The Presidio of Monterey, California in 1791.
Drawn by José Cardero.

**REGISTERED NATIONAL
HISTORIC LANDMARKS**

From Donald C. Cutter, ed., Malaspina in California (San Francisco, 1960), page 10.



View of the Presidio of Monterrey from a Sketch taken on the Spot by J. Sykes

J. Fittler Sculp

The PRESIDIO of MONTERREY.

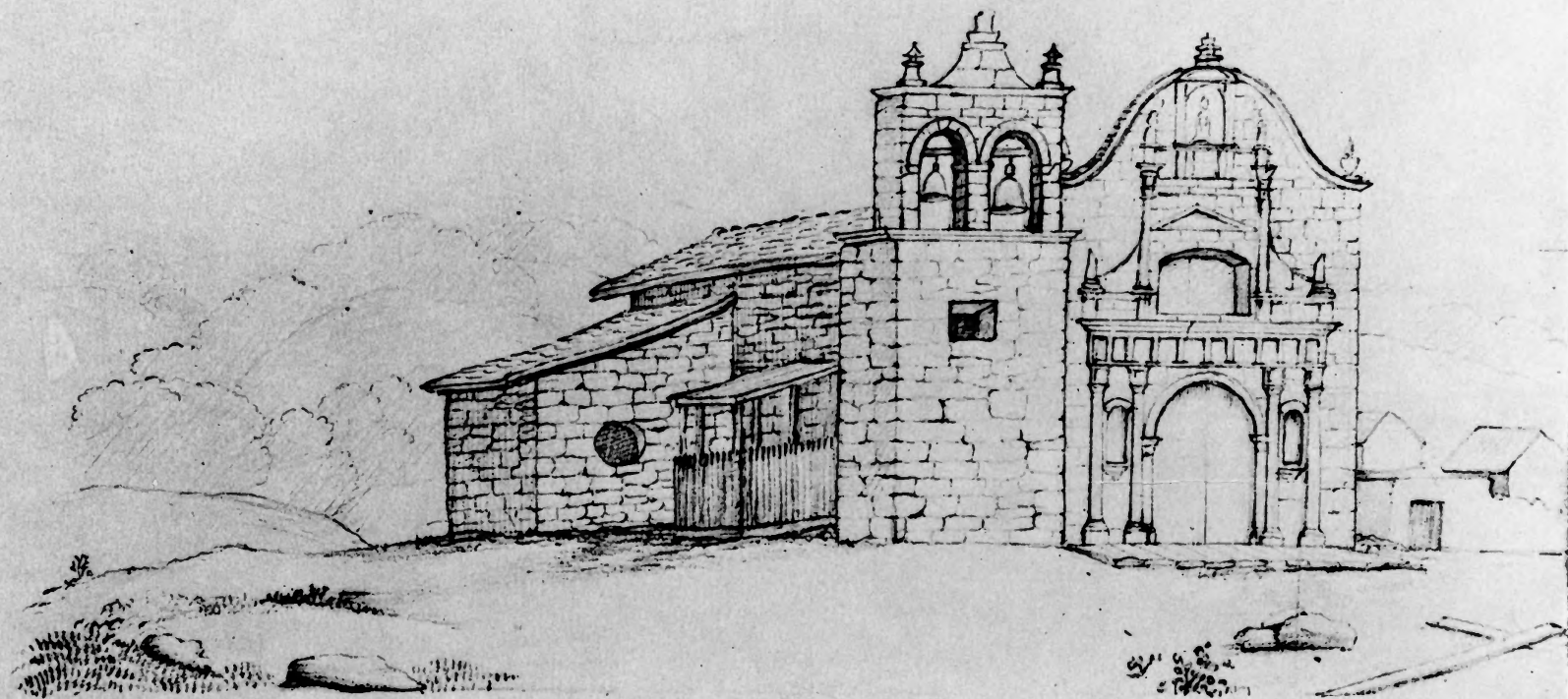
London Published May 1st 1798. by R. Edwards New Bond Street J. Edwards Bill Mall & C. Robinson Peter master Row.

1. The Presidio of Monterey, California, in 1795. LJM

Drawn by John Sykes.

REGISTERED NATIONAL
HISTORIC LANDMARKS

From George Vancouver, A Voyage of Discovery to the North Pacific Ocean, and Round the World (6 vols., London, 1801), Vol IV, 306.



Church of

at Monterey May 15 1847.

H. B. J. B.

20. Royal Presidio Chapel of Monterey, California, May 15, 1847.

From William Rich Hutton, California, 1847-1852
(San Marino, 1942), Plate XXIX.

REGISTERED NATIONAL
HISTORIC LANDMARKS



Royal Presidio Chapel, Presidio of Monterey, California

N.P.S. Photo, 1958

Royal Freddie Chapel, 1794-95
Freddie of Monterey, California.

1794-95, 1795-96

REGISTERED NATIONAL
MEMBER
NEW YORK LIBRARIES



Royal Presidio Chapel, Monterey, California

NPS Photo, 1968

UNITED STATES DEPARTMENT OF THE INTERIOR
NATIONAL PARK SERVICE

**NATIONAL REGISTER OF HISTORIC PLACES
PROPERTY PHOTOGRAPH FORM**

FOR NPS USE ONLY
RECEIVED
DATE ENTERED

SEE INSTRUCTIONS IN *HOW TO COMPLETE NATIONAL REGISTER FORMS*
TYPE ALL ENTRIES -- ENCLOSE WITH PHOTOGRAPH

1 NAME

HISTORIC
Royal Presidio Chapel

AND/OR COMMON
Royal Presidio Chapel

2 LOCATION

CITY, TOWN
Monterey

____VICINITY OF

STATE
California

COUNTY
Monterey

3 PHOTO REFERENCE

PHOTO CREDIT
Charles Snell, National Park Service

DATE OF PHOTO
1968

NEGATIVE FILED AT
Western Region

4 IDENTIFICATION

DESCRIBE VIEW, DIRECTION, ETC. IF DISTRICT, GIVE BUILDING NAME & STREET
West Facade

PHOTO NO.