



Warner Park Historic District

Warner Park, Nashville, Davidson County, +
Tennessee *Williamson County*

Photo by: Deb Beazley

Date: June, 1983

Neg: Warner Park Nature Center, Nashville

Facing SSW

View looking up alle' at front entrance

1 of 81



Warner Park Historic District
Warner Park, Nashville,
Davidson & Williamson Co. TN
Photo by: Deb Beazley

Date: June, 1983
Neg: Warner Park Nature
Center, Nashville

facing SSW
Closer view looking up alle'
at front entrance
2 of 81



Warner Park Historic District

Warner Park, Nashville, Davidson County, &
Tennessee *Williamson County*

Photo by: Deb Beazley

Date; June, 1983

Neg: Warner Park Nature Center, Nashville

Facing ESE

View of front entrance alle' from lower
side

3 of 81



Warner Park Historic District
Warner Park, Nashville,
Davidson & Williamson Co., TN
Photo by: Deb Beazley

Date: June, 1983
Neg: Warner Park Nature
Center, Nashville

Facing ESE
Close-up of stonework at
front entrance
4 of 81



Warner Park Historic District
Warner Park, Nashville,
Davidson & Williamson Co. TN
Photo by: Deb Beazley

Date: June, 1983
Neg: Warner Park Nature
Center, Nashville

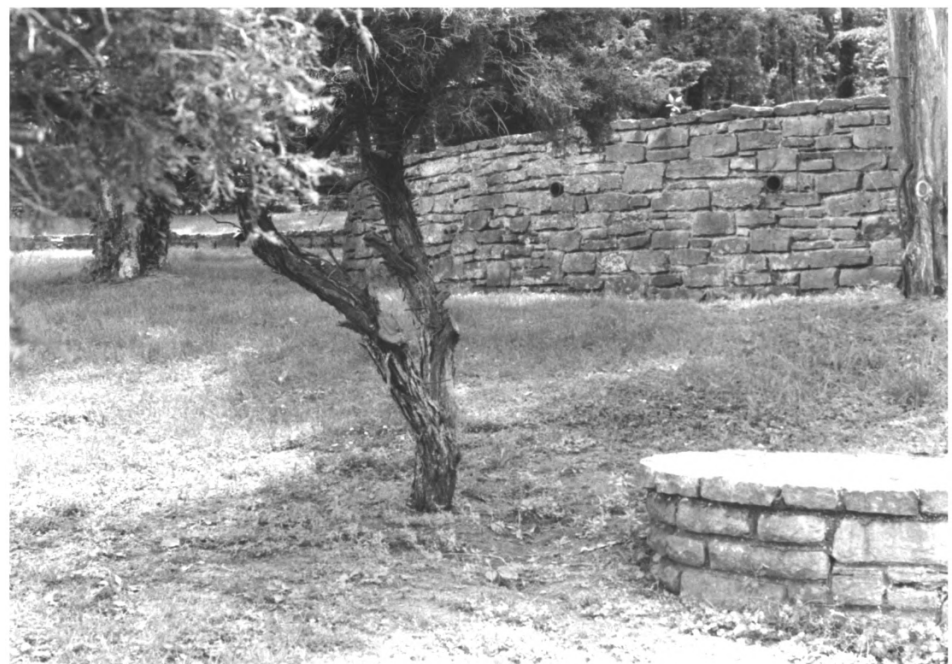
Facing WNW
View of stonework at front
entrance from middle of alle'
looking to the side of the
bottom 5 of 81



Warner Park Historic District
Warner Park, Nashville,
Davidson & Williamson Co. TN
Photo by: Deb Beazley

Date: June, 1983
Neg: Warner Park Nature
Center, Nashville

Facing SSW
Drain stonework at front
entrance
6 of 81



Warner Park Historic District
Warner Park, Nashville,
Davidson & Williamson Co. TN
Photo by: Deb Beazley

Date: June, 1983
Neg: Warner Park Nature
Center, Nashville

Facing SSW
Stonework at lower side of
front entrance
7 of 81



Warner Park Historic District
Warner Park, Nashville
Davidson & Williamson Co. TN
Photo by: Deb Beaszley

Date: June, 1983
Neg: Warner Park Nature
Center, Nashville

Facing ESE
Stone steps at front entrance
8 of 81



Warner Park Historic District
Warner Park, Nashville,
Davidson & Williamson Co. TN
Photo by: Deb Beazley

Date: June, 1983
Neg: Warner Park Nature
Center, Nashville

Facing SW
Circular pattern in stonework
at front entrance
9 of 18



Warner Park Historic District
Warner Park, Nashville,
Davidson & Williamson Co. TN
Photo by: Deb Beazley

Date: July, 1983
Neg: Warner Park Nature
Center, Nashville

Facing WNW
Looking down steps at lower
section of front entrance
on the side
10 of 81



Warner Park Historic District

Warner Park, Nashville, Davidson County, &
Tennessee *Williamson County*

Photo by: Deb Beazley

Date: July, 1982

Neg: Warner Park Nature Center, Nashville

Facing NE

Looking down alle' at front entrance from
the top

11 of 81



Warner Park Historic District
Warner Park, Nashville,
Davidson & Williamson Co. TN
Photo by: Deb Beazley

Date: July, 1983
Neg: Warner Park Nature
Center, Nashville

Facing W
Sandstone front entrance gates
with alle' in background
12 of 81



Warner Park Historic District
Warner Park, Nashville,
Davidson & Williamson Co. TN
Photo by: Deb Beazley

Date: July, 1983
Neg: Warner Park Nature
Center. Nashville

Facing SSW
Sandstone entrance gates
13 of 81



Warner Park Historic District

Warner Park, Nashville, Davidson County, +
Tennessee *Williamson County*

Photo by: Deb Beazley

Date: July, 1983

Neg: Warner Park Nature Center, Nashville

Facing SSW

Sandstone entrance gates

14 of 81



Warner Park Historic District

Warner Park, Nashville, Davidson County, +
Tennessee *Williamson County*

Photo by: Deb Beazley

Date: July, 1983

Neg: Warner Park Nature Center, Nashville

Facing SSW

Looking down Belle Meade Blvd. toward
sandstone front entrance of park

15 of 81



Warner Park Historic District

Warner Park, Nashville, Davidson County, +
Tennessee *Williamson County*

Photo by: Deb Beazley

Date: July, 1983

Neg: Warner Park Nature Center, Nashville

Facing SSW

Standstone entrance gates and start of
alle'

16 of 81



Warner Park Historic District
Warner Park, Nashville,
Davidson & Williamson Co. TN
Photo by: Deb Beazley

Date: June, 1983
Neg: Warner Park Nature
Center, Nashville

Facing S
W.P.A. stone entrance at
Deep Well Picnic Area
17 of 81



Warner Park Historic District
Warner Park, Nashville,
Davidson & Williamson Co. TN
Photo by: Deb Beazley

Date: June, 1983
Neg: Warner Park Nature
Center, Nashville

Facing S
Closer view of W.P.A. stone
entrance to Deep Well
18 of 81



Warner Park Historic District
Warner Park, Nashville,
Davidson & Williamson Co. TN
Photo by: Deb Beazley

Date: June, 1983
Neg: Warner Park Nature
Center, Nashville

Facing NNW
Mortared limestone entrance
gate and wall to park main-
tenance area--predates park.
19 of 18



Warner Park Historic District
Warner Park, Nashville,
Davidson & Williamson Co. TN
Photo by: Deb Beazley

Date: June 1983
Neg: Warner Park Nature
Center, Nashville

Facing E
View of other side of drive
of mortared limestone wall
to park maintenance area—
predates park

20 of 81

Warner Park Historic District

Warner Park, Nashville, Davidson County, +
Tennessee *Williamson County*

Photo by: Deb Beazley

Date: July, 1983

Neg: Warner Park Nature Center, Nashville

Facing WSW

Woolwine entrance to park

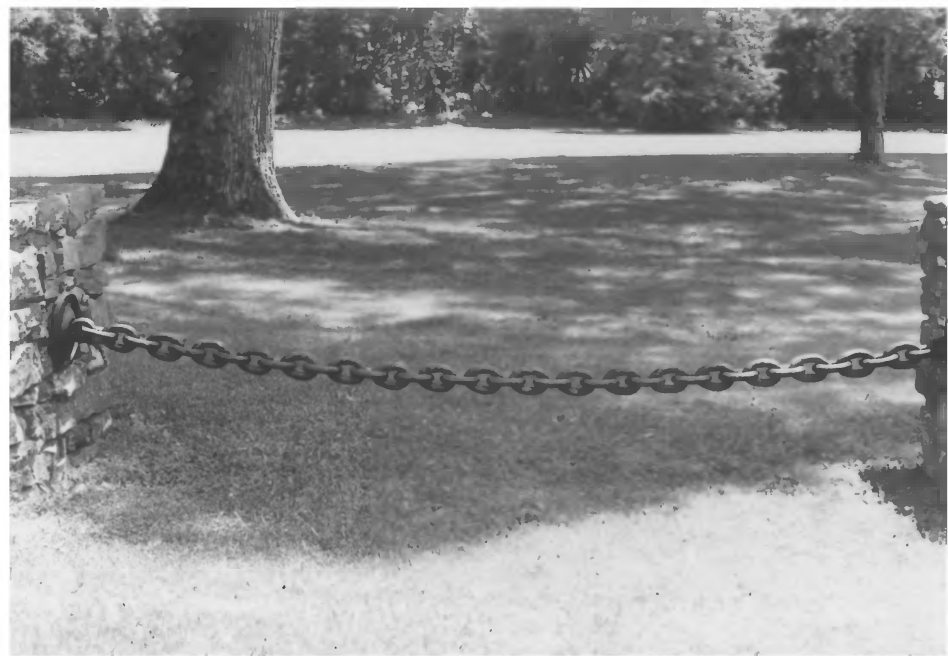
21 of 81



Warner Park Historic District
Warner Park, Nashville,
Davidson & Williamson Co. TN
Photo by: Deb Beazley

Date: July, 1983
Neg: Warner Park Nature
Center, Nashville

Facing W
Close-up of Woolwine entrance
west side of road
22 of 81



Warner Park Historic District
Warner Park, Nashville
Davidson & Williamson Co. TN
Photo by: Deb Blaszczyk

Date: June, 1983
Neg: Warner Park Nature
Center, Nashville

Facing E
Close-up of chain at Woolwine
entrance
23 of 81



Warner Park Historic District

Warner Park, Nashville, Davidson County, +
Tennessee *Williamson County*

Photo by: Deb. Beazley

Date: June, 1983

Neg: Warner Park Nature Center, Nashville

FACING W

Close-up of chains and posts at Woolwine
entrance

24 of 81



Warner Park Historic District
Warner Park, Nashville,
Davidson & Williamson Co. TN
Photo by: Deb Beazley

Date: June, 1983
Neg: Warner Park Nature
Center, Nashville

facing SW
W.P.A. mortared limestone
entrance off Chickering Rd.
25 of 81



Warner Park Historic District
Warner Park, Nashville,
Davidso & Williamson Co. TN
Photo by: Deb Beazley

Date: June, 1983
Neg: Warner Park Nature
Center, Nashville

facing WSW
W.P.A. mortared limestone
entrance off Chickering Rd.
26 of 81



Warner Park Historic District
Warner Park, Nashville,
Davidso & Williamson Co. TN
Photo by: Deb Beazley

Date: June, 1983
Neg: Warner Park Nature
Center, Nashville

facing NW

WPA mortared limestone gates
on Old Hickory Blvd. with
wall, posts, & pillars
27 of 81



Warner Park Historic District
Warner Park, Nashville.

Davidson & Williamson Co TN
Photo by: Deb Beazley

Date: June, 1983

Neg: Warner Park Nature
Center, Nashville

facing N

view of steeplechase course
with spectator hill

28 of 81



Warner Park Historic District
Warner Park. Nashville,
Davidson & Williamson Co TN
Photo by: Deb Beazley

Date: June 1983
Neg: Warner Park Nature
Center, Nashville

facing SE
steeplechase stables at
maintenance complex
29 of 81



Warner Park Historic District

Warner Park, Nashville, Davidson County, &
Tennessee *Williamson County*

Photo by: Deb Beazley

Date: June, 1983

Neg: Warner Park Nature Center, Nashville

Facing SW

WPA stone bridge

30 of 81



Warner Park Historic District

Warner Park, Nashville, Davidson County, &
Tennessee *Williamson County*

Photo by: Deb Beazley

Date: June, 1983

Neg: Warner Park Nature Center, Nashville

Facing ENE

WPA stone walls beside main road

31 of 81



Warner Park Historic District

Warner Park, Nashville, Davidson County, &
Tennessee *Williamson County*

Photo by: Deb Beazley

Date: June, 1983

Neg: Warner Park Nature Center, Nashville

Close-up WPA stone wall

32 of 81



Warner Park Historic District
Warner Park. Nashville.

Davidson & Williamson Co. TN

Photo by: Deb Beazley

Date: June, 1983

Neg: Warner Park Nature
Center, Nashville

facing NW

WPA stone pillars lining Old
Hickory Blvd. (65 pillars in
all) 33 of 81



Warner Park Historic District

Warner Park, Nashville, Davidson County, +
Tennessee Williamson County

Photo by: Deb Beazley

Date: June, 1983

Neg: Warner Park Nature Center, Nashville

Facing WSW

Main drive of park lined with WPA rock wall

34 of 81



Warner Park Historic District
Warner Park, Nashville,
Davidson | & Williamson Co. TN
Photo by: Deb Beazley

Date: June, 1983
Neg: Warner Park Nature
Center, Nashville

facing S
Scenic overlook above Beech
Grove picnic area
35 of 81



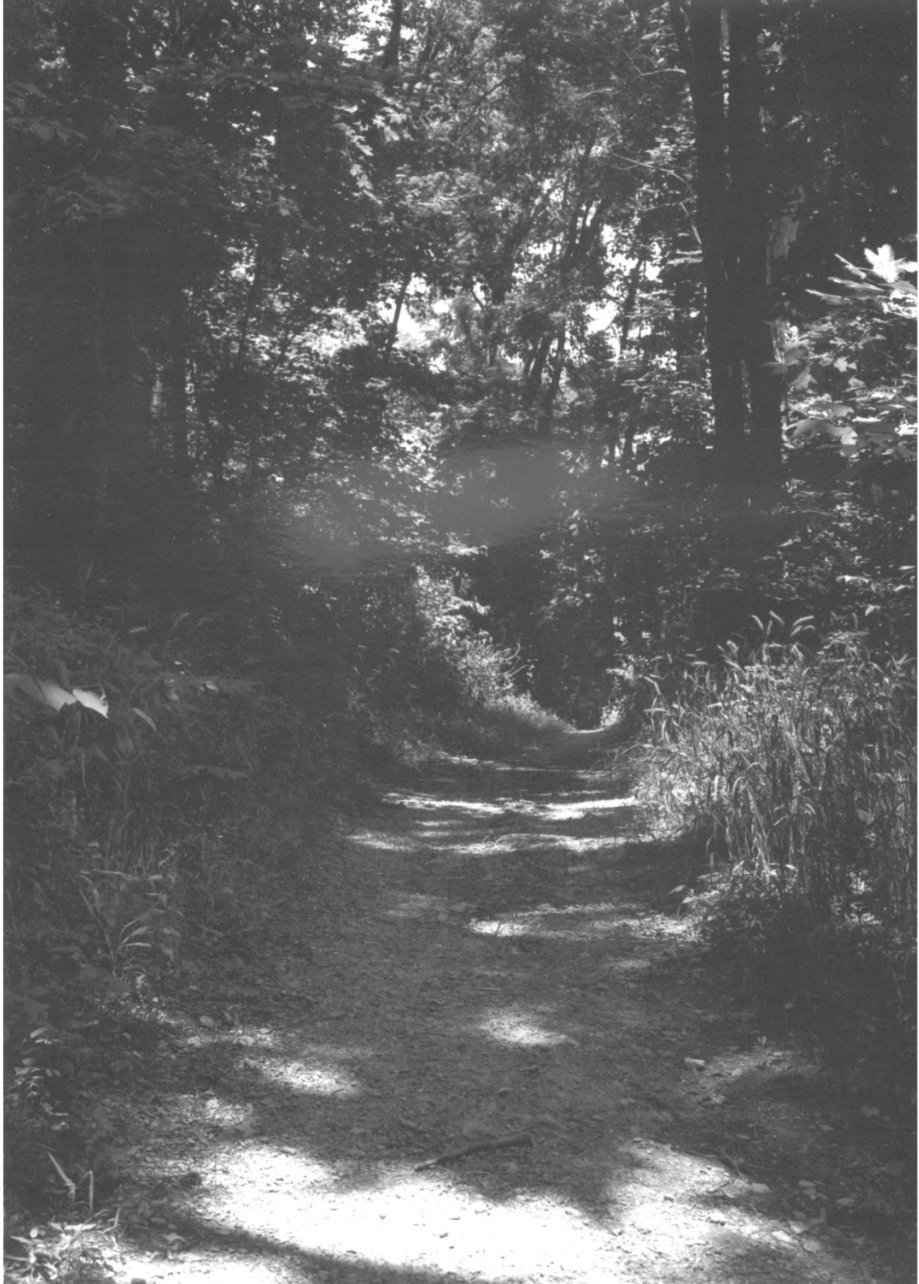
Warner Park Historic District
Warner Park, Nashville,
Davidson | & Williamson Co. TN
Photo by: Deb Beazley

Date: June, 1983
Neg: Warner Park Nature
Center, Nashville

facing NE

View of Lea's Summit of down-
town Nashville

36 of 81



Warner Park Historic District

Warner Park, Nashville, Davidson County, &
Tennessee Williamson County

Photo by: Deb Beazley

Date: June, 1983

Neg: Warner Park Nature Center, Nashville

Facing NE

Horse trail in park

37 of 81



Warner Park Historic District
Warner Park, Nashville,
Davidson & Williamson Co. TN
Photo by: Deb Beazley

Date: June 1983
Meg: Warner Park Nature
Center, Nashville

MGP
#2

facing SSW
WPA hiking trail 38 of 81



Warner Park Historic District
Warner Park, Nashville,
Davidson | & Williamson Co. TN
Photo by: Deb Beazley

Date: June, 1983
Neg: Warner Park Nature
Center, Nashville

P. 37
Map # 2

facing WSW
Woods scene in park
39 of 81



Warner Park Historic District

Warner Park, Nashville, Davidson County, +
Tennessee *Williamson County*

Photo by: Deb Beazley

Date: June, 1983

Neg: Warner Park Nature Center, Nashville

Facing NNW

Mowed field in park

40 of 81



Warner Park Historic District
Warner Park, Nashville

Davidson & Williamson Co. TN

Photo by: Deb Beaszley

Date: June, 1983

Neg: Warner Park Nature
Center, Nashville

facing N

Field of wildflowers

41 of 81



Warner Park Historic District
Warner Park, Nashville,
Davidson | & Williamson Co., TN
Photo by: Deb Beazley

Date: June, 1983
Neg: Warner Park Nature
Center, Nashville

facing WSW
Little Harpeth River on
boundary of park
42 of 81



Warner Park Historic District

Warner Park, Nashville, Davidson County, +
Tennessee *Williamson County*

Photo by: Deb Beazley

Date: June, 1983

Neg: Warner Park Nature Center, Nashville

Facing SW

Dripping springs — interior of park

43 of 81



Warner Park Historic District
Warner Park, Nashville,
Davidson & Williamson Co. TN
Photo by: Deb Beazley

Date: June, 1983
Neg: Warner Park Nature
Center, Nashville

facinf SSE
Clubhouse on Percy Warner Gol
Course: WPA
44 of 81



Warner Park Historic District
Warner Park, Nashville
Davidson | & Williamson Co. TN
Photo by: Deb Beaszley

Date: June, 1983
Neg: Warner Park Nature
Center, Nashville

facing SE
Maintenance building on Percy
Warner Golf Course
45 of 81



Warner Park Historic District
Warner Park, Nashville,
Davidson | & Williamson Co. TN
Photo by: Deb Beazley

Date: June, 1983
Neg: Warner Park Nature
Center, Nashville

facing E
View of Percy Warner Golf
Course
46 of 81



Warner Park Historic District
Warner Park, Nashville,
Davidson & Williamson Co. TN
Photo by: Deb Beazley

Date: June, 1983
Neg: Warner Park Nature
Center, Nashville

facing W
Clubhouse on Harpeth Hills
Golf Course
47 of 81



Warner Park Historic District
Warner Park, Nashville,
Davidson & Williamson Co. TN
Photo by: Deb Beazley

Date: June, 1983
Neg: Warner Park Nature
Center, Nashville

facing NW
Residence at Harpeth Hills
Golf Course
48 of 81



Warner Park Historic District
Warner Park, Nashville,
Davidson | & Williamson Co. TN
Photo by: Deb Beazley

Date: June, 1983
Neg: Warner Park Nature
Center, Nashville

facing S
Maintenance barn at Harpeth
Hills Golf Course
49 of 81



Warner Park Historic District
Warner Park, Nashville,
Davidson | & Williamson Co. TN
Photo by: Deb Beazley

Date: June, 1983
Neg: Warner Park Nature
Center, Nashville

facing NNW
View of Harpeth Hills Golf
Course
50 of 81



Warner Park Historic District
Warner Park, Nashville,
Davidson | & Williamson Co. TN
Photo by: Deb Beazley

Date: June 1983
Neg: Warner Park Nature
Center, Nashville

facing SSW
view of nursery
51 of 81



Warner Park Historic District
Warner Park, Nashville,
Davidson | & Williamson Co. TN
Photo by: Deb Beazley

Date: June, 1983
Neg: Warner Park Nature
Center, Nashville

facing N
WPA girl scout cabin in park
52 of 81

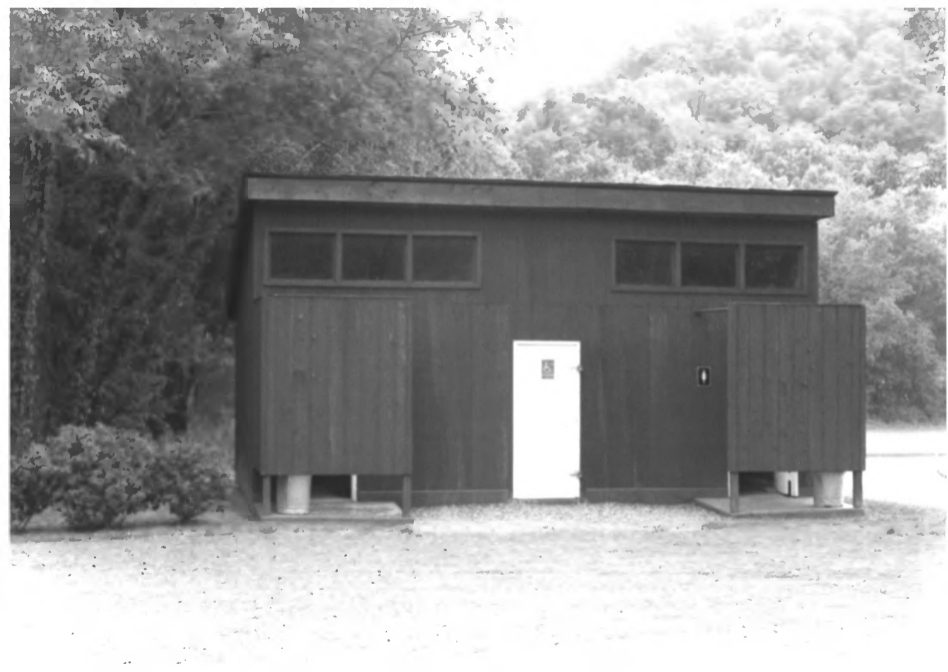


Warner Park Historic District
Warner Park, Nashville,
Davidson | & Williamson Co. TN
Photo by: Deb Beazley

Date: June, 1983
Neg: Warner Park Nature
Center, Nashville

Chimney left from WPA scout
cabin near Deep Well picnic
area

53 of 81



Warner Park Historic District
Warner Park, Nashville,
Davidson | & Williamson Co. TN
Photo by: Deb Beazley

Date: June 1983
Neg: Warner Park Nature
Center, Nashville

facing SSE
Public restroom
54 of 81



Warner Park Historic District
Warner Park, Nashville,
Davidson | & Williamson Co. TN
Photo by: Deb Beazley

Date: June, 1983
Neg: Warner Park Nature
Center, Nashville

facing NNW

Baseball field by Old Hickory
Blvd.

55 of 81



Warner Park Historic District
Warner Park, Nashville,
Davidson & Williamson Co. TN
Photo by: Deb Beazley

Date: June, 1983
Neg: Warner Park Nature
Center, Nashville

facing NNW
Model airplane field
56 of 81



Warner Park Historic District
Warner Park, Nashville,
Davidson | & Williamson Co. TN
Photo by: Deb Beazley

Date: June, 1983
Neg: Warner Park Nature
Center, Nashville

facing ENE 57' of 81
View of Nature Center Complex
showing museum to left (old
Glaspie place) and office to
right (old Paschall farmhouse)



Warner Park Historic District
Warner Park, Nashville
Davidson | & Williamson Co. TN
Photo by: Deb Beasley

Date: June, 1983
Neg: Warner Park Nature
Center, Nashville

facing NNW
C.E. Farrell Museum of Natural
History (old Glaspie residence)
58 of 81



Warner Park Historic District
Warner Park, Nashville,
Davidson | & Williamson Co. TN
Photo by: Deb Beazley

Date: June, 1983
Neg: Warner Park Nature
Center, Nashville

facing E
View of office (old Paschall
farmhouse)
59 of 81



Warner Park Historic District
Warner Park, Nashville,
Davidson | & Williamson Co. TN
Photo by: Deb Beazley

Date: June, 1983
Neg: Warner Park Nature
Center, Nashville

facing NE
View of park maintenance com
plex on Old Hickory Blvd.
60 of 81



Warner Park Historic District
Warner Park, Nashville,
Davidson | & Williamson Co. TN
Photo by: Deb Beazley

Date: June, 1983
Neg: Warner Park Nature
Center, Nashville

facing N
Old Vaughn's residence (now
park maintenance supervisor's
house)

61 of 81



Warner Park Historic District
Warner Park, Nashville,
Davidson | & Williamson Co. TN
Photo by: Deb Beazley

Date: June, 1983
Neg: Warner Park Nature
Center, Nashville

facing WNW
WPA residence on Vaughn's Rd
62 of 81



Warner Park Historic District
Warner Park, Nashville,
Davidson & Williamson Co. TN
Photo by: Deb Beazley

Date: July, 1983
Neg: Warner Park Nature
Center, Nashville

facing NE
Ream's farmhouse
63 of 81



Warner Park Historic District
Warner Park, Nashville.
Davidson & Williamson Co. TN
Photo by: Deb Beazley

Date: June, 1983
Neg: Warner Park Nature
Center, Nashville

facing NNW
Greenskeeper house on Harpet
Hills Golf Course (old Sawyer
residence)
64 of 81



Warner Park Historic District
Warner Park, Nashville,
Davidson & Williamson Co, TN
Photo by: Deb Beazley

Date: July, 1983
Neg: Warner Park Nature
Center, Nashville

facing E
Fishing lake on Highway 100
65 of 81



Warner Park Historic District
Warner Park, Nashville,
Davidson & Williamson Co. TN
Photo by: Deb Beazley

Date: June, 1983
Neg: Warner Park Nature
Center, Nashville

facing W
View of polo field next to
Nature Center Complex
66 of 81



Warner Park Historic District

Warner Park, Nashville, Davidson County, &
Tennessee *Williamson County*

Photo by: Deb Beazley

Date: June, 1983

Neg: Warner Park Nature Center, Nashville

Facing SW

WPA picnic shelter at Indian Springs

67 of 81



Warner Park Historic District
Warner Park, Nashville.

Davidson & Williamson Co. TN

Photo by: Deb Beazley

Date: June, 1983

Neg: Warner Park Nature
Center, Nashville

facing S

WPA picnic shelter at Indian
Springs (style #1)

68 of 81



Warner Park Historic District
Warner Park, Nashville,
Davidson & Williamson Co. TN
Photo by: Deb Beazley

Date: June, 1983
Neg: Warner Park Nature
Center, Nashville

facing SE
WPA round picnic shelter by
river (style #2)
69 of 81



Warner Park Historic District .

Warner Park, Nashville, Davidson County, +
Tennessee *Williamson County*

Photo by: Deb Beazley

Date: June, 1983

Neg: Warner Park Nature Center, Nashville

Facing E.

WPA split-lot picnic shelter (style #3)

70 of 81



Warner Park Historic District
Warner Park, Nashville,
Davidson & Williamson Co. TN
Photo by: Deb Beazley

Date: June 1983
Neg: Warner Park Nature
Center, Nashville

facing E
WPA open picnic shelter
(style #4)
71 of 81



Warner Park Historic District
Warner Park, Nashville,
Davidson & Williamson Co. TN
Photo by: Deb Beazley

Date: June, 1983
Neg: Warner Park Nature
Center, Nashville

facing ENE
New open-sided picnic shelter
72 of 81



Warner Park Historic District
Warner Park, Nashville,
Davidson & Williamson Co. TN
Photo by: Deb Beazley

Date: June, 1983
Neg: Warner Park Nature
Center, Nashville

facing NW
One of the family cemeteries
in park (Northern family)
73 of 81



Warner Park Historic District
Warner Park, Nashville
Davidson & Williamson Co. TN
Photo by: Deb Beaszley

Date: June, 1983
Neg: Warner Park Nature
Center, Nashville

facing W
Remaining rock wall of slave
cemetery
74 of 81



Warner Park Historic District

Warner Park, Nashville, Davidson County, &
Tennessee *Williamson County*

Photo by: Deb Beazley

Date: June, 1983

Neg: Warner Park Nature Center, Nashville

Facing NW

View of the Natchez Trace

75 of 81



Warner Park Historic District
Warner Park, Nashville,
Davidson & Williamson Co. TN
Photo by: Deb Beazley

Date: June, 1983
Neg: Warner Park Nature
Center, Nashville

facing NE
View of rock quarry in park
76 of 81



Warner Park Historic District
Warner Park, Nashville,
Davidson & Williamson Co. TN
Photo by: Deb Beazley

Date: June, 1983
Neg: Warner P . k Nature
Center, shville

facing W
Devon Farm
77 of 81



Warner Park Historic District
Warner Park, Nashville
Davidson & Williamson Co. TN
Photo by: Deb Beaszley

Date: June, 1983
Neg: Warner Park Nature
Center, Nashville

facing W
Cheekwood Mansion
78 of 81



Warner Park Historic District
Warner Park, Nashville,
Davidson & Williamson Co. TN
Photo by: Deb Beazley

Date: June, 1983
Neg: Warner Park Nature
Center, Nashville

facing SE
Examples of homes in Belle
Meade area bordering park
79 of 81



Warner Park Historic District
Warner Park, Nashville,
Davidson & Williamson Co. TN
Photo by: Deb Beazley

Date: June, 1983
Neg: Warner Park Nature
Center, Nashville

facing SE
Examples of homes in new sub-
division Devonshire—border-
ing park
80 of 81

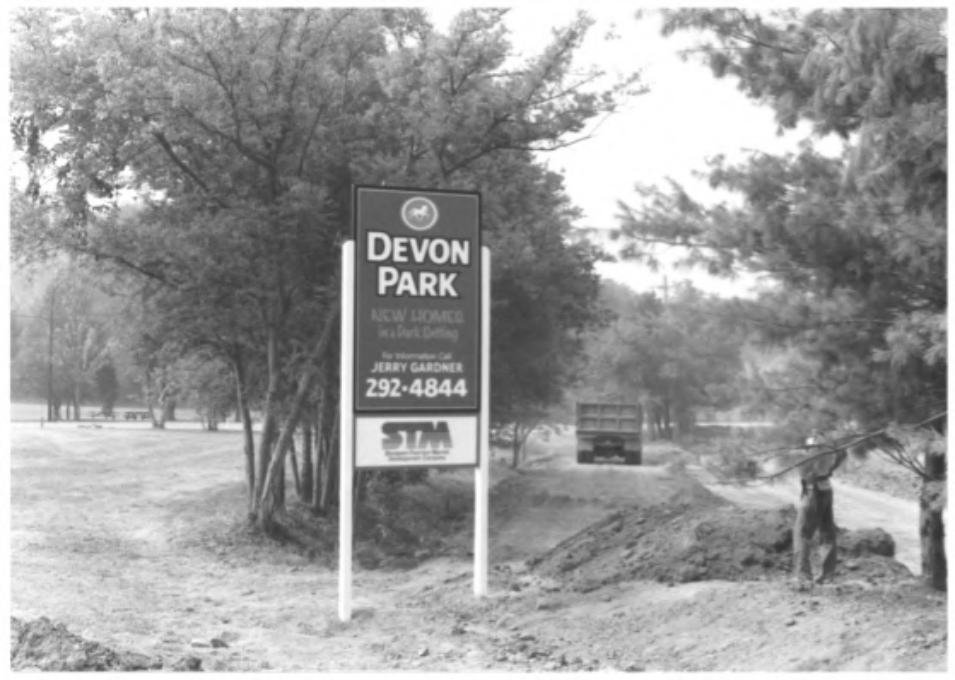


DEVON PARK

NEW HOMES
in a Park Setting

For Information Call
JERRY GARDNER
292-4844

SJM
SOUTHERN JACOBS MARSHALL



Warner Park Historic District
Warner Park. Nashville,
Davidson & Williamson Co. TN
Photo by: Deb Beazley

Date: June, 1983
Neg: Warner Park Nature
Center, Nashville

facing SSW
New subdivison under con-
struction bordering park
81 of 81

