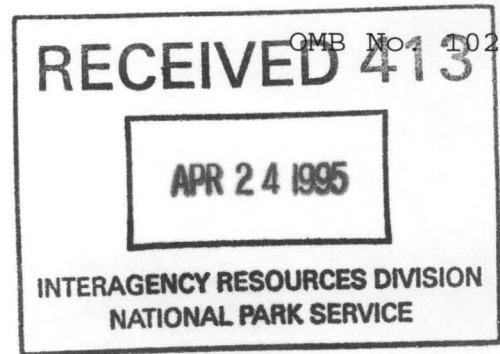


646



United States Department of the Interior  
National Park Service

NATIONAL REGISTER OF HISTORIC PLACES  
REGISTRATION FORM

1. Name of Property

historic name: Petit Jean River Bridge

other name/site number: LO0043

2. Location

street & number: State Highway 109 at crossing of Petit Jean River

not for publication: N/A

city/town: Sugar Grove

vicinity: X

state: AR county: Logan code: AR 083 zip code: 72927

3. Classification

Ownership of Property: Public-state

Category of Property: Structure

Number of Resources within Property:

Contributing      Noncontributing

<u>      </u>	<u>      </u>	buildings
<u>      </u>	<u>      </u>	sites
<u>  1  </u>	<u>      </u>	structures
<u>      </u>	<u>      </u>	objects
<u>  1  </u>	<u>  0  </u>	Total

Number of contributing resources previously listed in the National Register: N/A

Name of related multiple property listing: Historic Bridges of Arkansas

=====  
**4. State/Federal Agency Certification**  
=====

As the designated authority under the National Historic Preservation Act of 1986, as amended, I hereby certify that this X nomination \_\_\_\_\_ request for determination of eligibility meets the documentation standards for registering properties in the National Register of Historic Places and meets the procedural and professional requirements set forth in 36 CFR Part 60. In my opinion, the property X meets \_\_\_\_\_ does not meet the National Register Criteria. \_\_\_\_\_ See continuation sheet.

Calvin A. Slatu  
Signature of certifying official

4-11-95  
Date

Arkansas Historic Preservation Program  
State or Federal agency and bureau

In my opinion, the property \_\_\_\_\_ meets \_\_\_\_\_ does not meet the National Register criteria. \_\_\_\_\_ See continuation sheet.

\_\_\_\_\_  
Signature of commenting or other official

\_\_\_\_\_  
Date

\_\_\_\_\_  
State or Federal agency and bureau

=====  
**5. National Park Service Certification**  
=====

I, hereby certify that this property is:

☒ entered in the National Register  
\_\_\_\_\_ See continuation sheet.  
☐ determined eligible for the  
National Register  
\_\_\_\_\_ See continuation sheet.  
☐ determined not eligible for the  
National Register  
☐ removed from the National Register  
\_\_\_\_\_ other (explain): \_\_\_\_\_

Edson H. Ball  
Entered in the  
National Register

5/26/95

\_\_\_\_\_  
Signature of Keeper

\_\_\_\_\_  
Date  
of Action

=====  
**6. Function or Use**  
=====

Historic: TRANSPORTATION

Sub: Road-related

Current: TRANSPORTATION

Sub: Road-related

=====

## 7. Description

=====

Architectural Classification:

Other \_\_\_\_\_  
\_\_\_\_\_  
\_\_\_\_\_

Other Description: Pratt thru-truss

Materials:	foundation	<u>Stone/concrete</u>	roof	<u>N/A</u>
	walls	<u>Metal handrailing</u>	other	<u>Timber over</u>
				<u>s t e e l</u>
				<u>substructure</u>

Describe present and historic physical appearance. X See continuation sheet.

=====

## 8. Statement of Significance

=====

Certifying official has considered the significance of this property in relation to other properties: Local.

Applicable National Register Criteria: C

Criteria Considerations (Exceptions): N/A

Areas of Significance: ENGINEERING  
\_\_\_\_\_  
\_\_\_\_\_  
\_\_\_\_\_

Period(s) of Significance: 1938-1939

Significant Dates: 1938

Significant Person(s): N/A  
\_\_\_\_\_

Cultural Affiliation: N/A

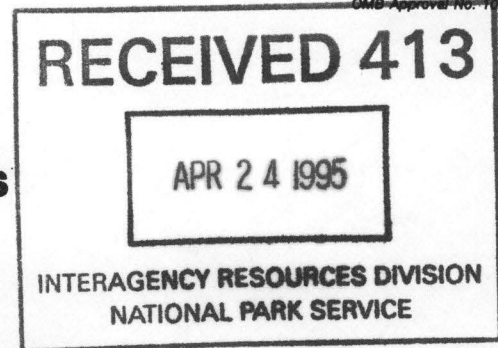
Architect/Builder: Unknown  
\_\_\_\_\_  
\_\_\_\_\_

State significance of property, and justify criteria, criteria considerations, and areas and periods of significance noted above.  
X See continuation sheet.

United States Department of the Interior  
National Park Service

## National Register of Historic Places Continuation Sheet

Section number 7 Page 1



### Description

Located on Highway 109 at its crossing of the Petit Jean River (approximately .5 miles south of County Road 738 and Highway 109, approximately one mile north of Sugar Creek), the Petit Jean River Bridge is a Pratt through-truss steel bridge. The bridge itself extends between two pair of poured concrete piers placed away from each shoreline and which connect the bridge structure itself with the approach spans. The entire bridge measures 273 feet in length, with a deck width of 19 feet and an overall width of 24 feet. The abutments that support the ends of the approach spans are stone masonry and the piers are concrete. The deck material is timber over a steel substructure. A simple metal handrailing also runs the length of each side of the deck.

**United States Department of the Interior  
National Park Service**

**National Register of Historic Places  
Continuation Sheet**

Section number 8 Page 1

---

**Significance**

Constructed in 1938, the Petit Jean River Bridge is associated with the *Arkansas Highway and Transportation Era* historic context and is of the steel Pratt through-truss type. Though the identity of its original designer does not survive, it was constructed in conjunction with the Arkansas State Highway Commission and thus may well have been designed by one of that state agency's engineers. Given its relatively intact condition it retains sufficient integrity to remain associated with its historic period and is thus locally eligible under Criterion C.



=====

## 9. Major Bibliographical References

=====

See "Historic Bridges of Arkansas" MPS Nomination, Section H.

\_\_\_ See continuation sheet.

Previous documentation on file (NPS):

- preliminary determination of individual listing (36 CFR 67) has been requested.
- previously listed in the National Register
- previously determined eligible by the National Register
- designated a National Historic Landmark
- recorded by Historic American Buildings Survey # \_\_\_\_\_
- recorded by Historic American Engineering Record # \_\_\_\_\_

Primary Location of Additional Data:

- X State historic preservation office
- Other state agency
- Federal agency
- Local government
- University
- Other -- Specify Repository: \_\_\_\_\_

=====

## 10. Geographical Data

=====

Acreage of Property: Less than one

UTM References:	Zone	Easting	Northing	Zone	Easting	Northing
A	<u>15</u>	<u>427000</u>	<u>3883850</u>	B	<u>15</u>	_____
C	<u>15</u>	_____	_____	D	<u>15</u>	_____

\_\_\_ See continuation sheet.

Verbal Boundary Description: \_\_\_ See continuation sheet.

Beginning at a point formed by the intersection of the western edge of State Highway 109 with a perpendicular line running parallel with the northern end of the bridge and located approximately 25 feet to the north thereof, proceed westerly for a distance of approximately 25 feet to its intersection with a perpendicular line running parallel with the bridge's western side; thence proceed southerly along said line for a distance of approximately 323 feet to its intersection with a perpendicular line; thence proceed easterly along said line for a distance of approximately 74 feet to its intersection with a perpendicular line; thence proceed northerly along said line for a distance of approximately 323 feet to its intersection with a perpendicular line; thence proceed southwesterly to the point of beginning.

Boundary Justification: \_\_\_ See continuation sheet.

This boundary includes all the property historically associated with this resource.

=====

**11. Form Prepared By**

=====

Name/Title: Ken Story, National Register/Survey Coordinator

Organization: Arkansas Historic Preservation Program Date: 04/04/95

Street & Number: 323 Center Street, Suite 1500 Telephone: (501) 324-9880

City or Town: Little Rock State: AR Zip: 72201

UNITED STATES DEPARTMENT OF THE INTERIOR  
NATIONAL PARK SERVICE

NATIONAL REGISTER OF HISTORIC PLACES  
EVALUATION/RETURN SHEET

REQUESTED ACTION: NOMINATION

PROPERTY     Petit Jean River Bridge  
NAME:

MULTIPLE     Historic Bridges of Arkansas MPS  
NAME:

STATE & COUNTY:     ARKANSAS, Logan

DATE RECEIVED:             4/24/95             DATE OF PENDING LIST:     5/10/95  
DATE OF 16TH DAY:         5/26/95             DATE OF 45TH DAY:         6/08/95  
DATE OF WEEKLY LIST:

REFERENCE NUMBER:     95000646

NOMINATOR: STATE

REASONS FOR REVIEW:

APPEAL:     N     DATA PROBLEM:     N     LANDSCAPE:     N     LESS THAN 50 YEARS:     N  
OTHER:     N     PDIL:                     N     PERIOD:             N     PROGRAM UNAPPROVED:     N  
REQUEST:     N     SAMPLE:                     N     SLR DRAFT:     N     NATIONAL:             N

COMMENT WAIVER:     N

  ✓   ACCEPT            RETURN            REJECT       5/26/95   DATE

ABSTRACT/SUMMARY COMMENTS: Entered in the  
National Register

RECOM./CRITERIA \_\_\_\_\_

REVIEWER \_\_\_\_\_ DISCIPLINE \_\_\_\_\_

TELEPHONE \_\_\_\_\_ DATE \_\_\_\_\_

DOCUMENTATION see attached comments Y/N see attached SLR Y/N





PETIT JEAN RIVER BRIDGE

SUGAR GROVE VIC., LOGAN Co., AR

PHOTO BY T. FERGUSON

1/93

NEG. ON FILE AT AHPP

VIEW FROM SOUTH





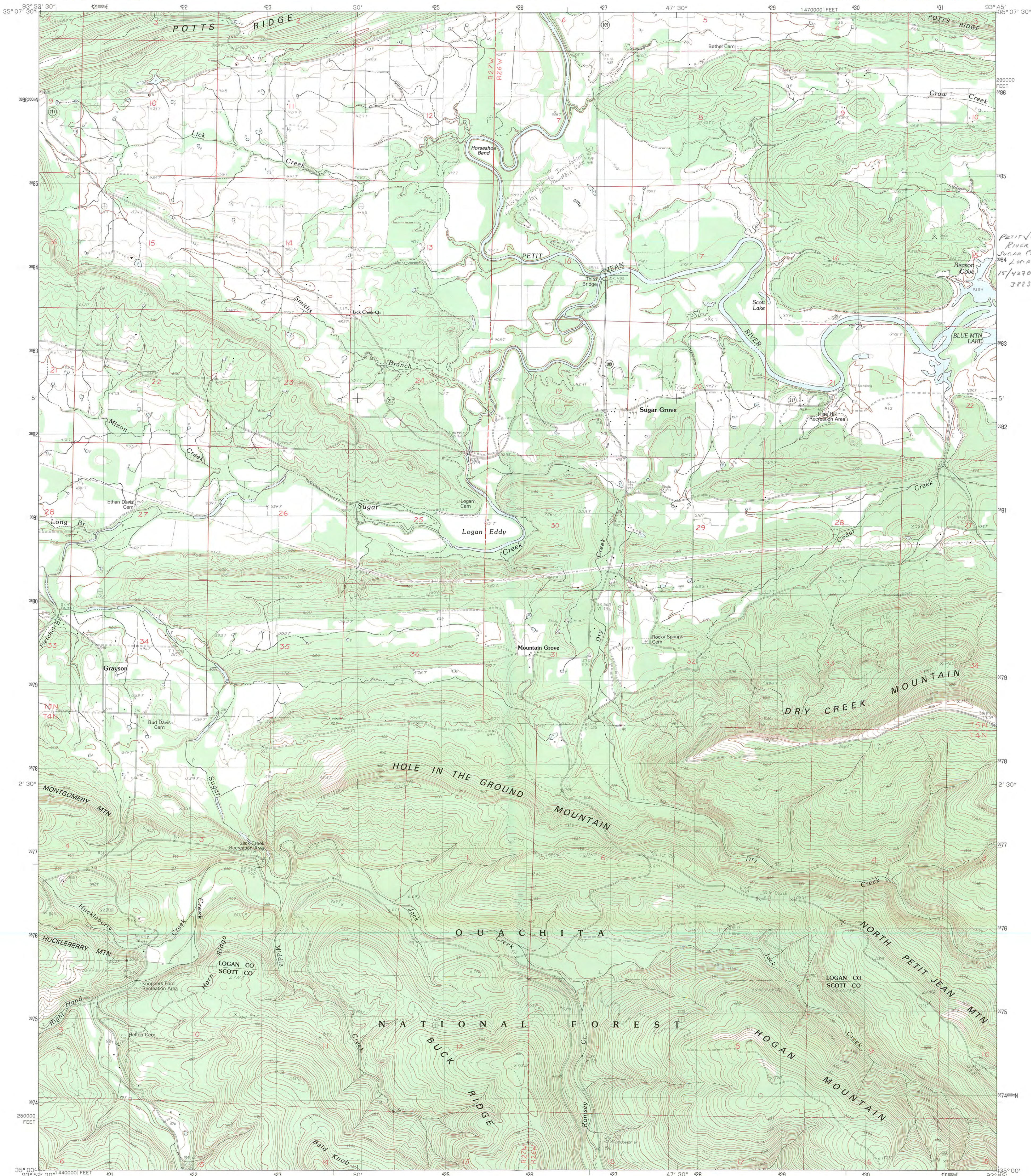
PETIT JEAN RIVER BRIDGE  
SUGAR GROVE VIC., LOGAN CO., AR  
PHOTO BY T. FERGUSON

1/93

NEG. ON FILE AT AHPP

VIEW FROM SOUTH





PRODUCED BY THE UNITED STATES GEOLOGICAL SURVEY  
CONTROL BY ..... USGS AND NOS/NOAA  
COMPILED FROM AERIAL PHOTOGRAPHS TAKEN ..... 1978  
FIELD CHECKED ..... 1979 ..... MAP EDITED .....  
PROJECTION ..... LAMBERT CONFORMAL CONIC  
GRID: 1000-METER UNIVERSAL TRANSVERSE MERCATOR ..... ZONE 15  
100,000-FOOT STATE GRID TICKS ..... ARKANSAS, NORTH ZONE  
UTM GRID DECLINATION ..... 0°28' WEST  
1983 MAGNETIC NORTH DECLINATION ..... 5°30' EAST  
VERTICAL DATUM ..... NATIONAL GEODETIC VERTICAL DATUM OF 1929  
HORIZONTAL DATUM ..... 1927 NORTH AMERICAN DATUM  
To place on the predicted North American Datum of 1983  
move the projection lines as shown by dashed corner ticks  
(7 meters south and 17 meters east)  
There may be private inholdings within the boundaries of any  
Federal and State reservations shown on this map

PROVISIONAL MAP  
Produced from original  
manuscript drawings. Infor-  
mation shown as of date of  
field check.

SCALE 1:24 000

1 0 1000 2000 3000 4000 5000 6000 7000 8000 9000 10 000  
MILES

1 0 1000 2000 3000 4000 5000 6000 7000 8000 9000 10 000  
FEET

1 0 1000 2000 3000 4000 5000 6000 7000 8000 9000 10 000  
KILOMETERS

CONTOUR INTERVAL 20 FEET  
SUPPLEMENTARY CONTOUR INTERVAL 10 FEET  
To convert feet to meters multiply by .3048  
To convert meters to feet multiply by 3.2808

THIS MAP COMPLIES WITH NATIONAL MAP ACCURACY STANDARDS  
FOR SALE BY U. S. GEOLOGICAL SURVEY, DENVER, COLORADO 80225, OR RESTON, VIRGINIA 22092  
AND THE ARKANSAS GEOLOGICAL COMMISSION, LITTLE ROCK, ARKANSAS 72204

ROAD LEGEND

Improved Road .....  
Unimproved Road .....  
Trail .....  
Interstate Route ..... U. S. Route ..... State Route

QUADRANGLE LOCATION

1 2 3 4 5 6 7 8

1 Booneville  
2 Magazine  
3 Blue Mountain  
4 Golden City  
5 Blue Mountain Dam  
6 Bee Mountain  
7 Freedom Mountain  
8 Gravelly

ADJOINING 7.5' QUADRANGLE NAMES

SUGAR GROVE, ARKANSAS  
PROVISIONAL EDITION 1983  
35093-A7-TF-024