



Madison County Fair Grounds
Twin Bridges, Montana 59754

Back elevation of Grandstand.
Taken April, 1984
by Garry L. Preston
Negatives held by Fair Board



MADISON COUNTY FAIR GROUNDS
TWIN BRIDGES, MONTANA

GRANDSTAND BLEACHERS OR SEATING

SEATING CAPACITY 2,000

Taken by Garry L. Preston

Date, November, 1983

Taken from the East

Negatives held by Fair Board
Twin Bridges, Montana 59754



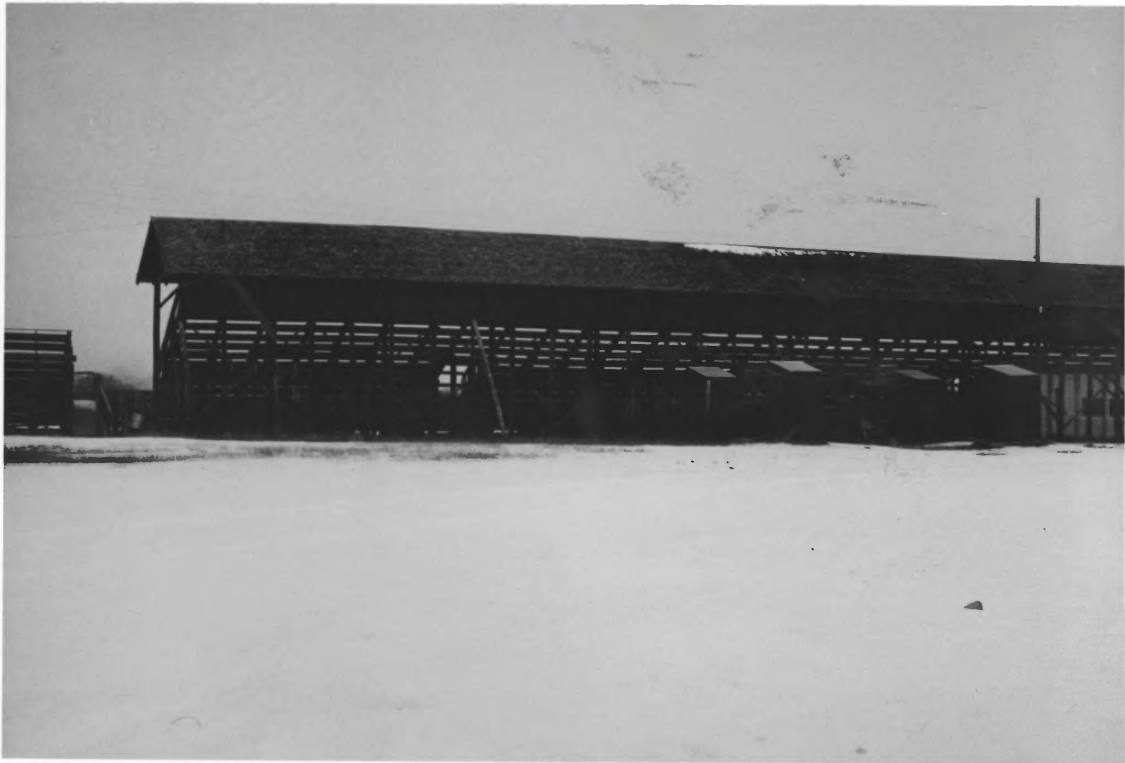
MADISON COUNTY FAIR GROUNDS
TWIN BRIDGES, MONTANA
GRANDSTAND STRUCTURAL SUPPORT

Taken by Garry L. Preston
Date, November, 1983
Taken from the East
Negative held by Fair Board
Twin Bridges, Montana 59754



Madison County Fair Grounds
Twin Bridges, Montana 59754

Poultry and Rabbit Shed
taken April, 1984
by Garry L. Preston
Negatives held by Fair Board



MADISON COUNTY FAIR GROUNDS
TWIN BRIDGES, MONTANA
GRAND STAND BACK ELIVATION

Taken by Garry L. Preston
Date, November, 1983
From the South
Negatives held by Fair Board
Twin Bridges, Montana 59754



Madison County Fair Grounds
Twin Bridges, Montana 59754

Swine Building
Taken April, 1984
by Garry L. Preston
Negatives held by Fair Board



Madison County Fair Grounds
Twin Bridges, Montana 59754

New Open Shed (cattle barn)

Taken April, 1984

negatives held by Fair Board

Taken by Garry L. Preston



Madison County Fair Grounds
Twin Bridges, Montana 59754

Closed Horse Shed(stud barn)
Taken April, 1984
by Garry L. Preston
Negatives held by Fair Board



Madison County Fair Grounds
Twin Bridges, Montana 59754

Open Horse Shed #13 on Map
Taken April, 1984

By Garry L. Preston

Negatives held at Fair Ground



Madison County Fair Grounds
Twin Bridges, Montana 59754

Square Building. Outside redone
by WPA from Metal siding to
log veneer 1938

Taken April, 1984
by Garry L. Preston
Negatives held by Fair Board



Madison County Fair Grounds

Twin Bridges, Montana 59754

4H Building (metal)

taken April, 1984

by Garry L. Preston

Negatives held by Fair Board



MADISON COUNTY FAIR GROUNDS
TWIN BRIDGES, MONTANA
ONE OF TWO IDENTICAL STOCK BARNS
FIGURE FIVE ON PLOT MAP
FRONT ELIVATION

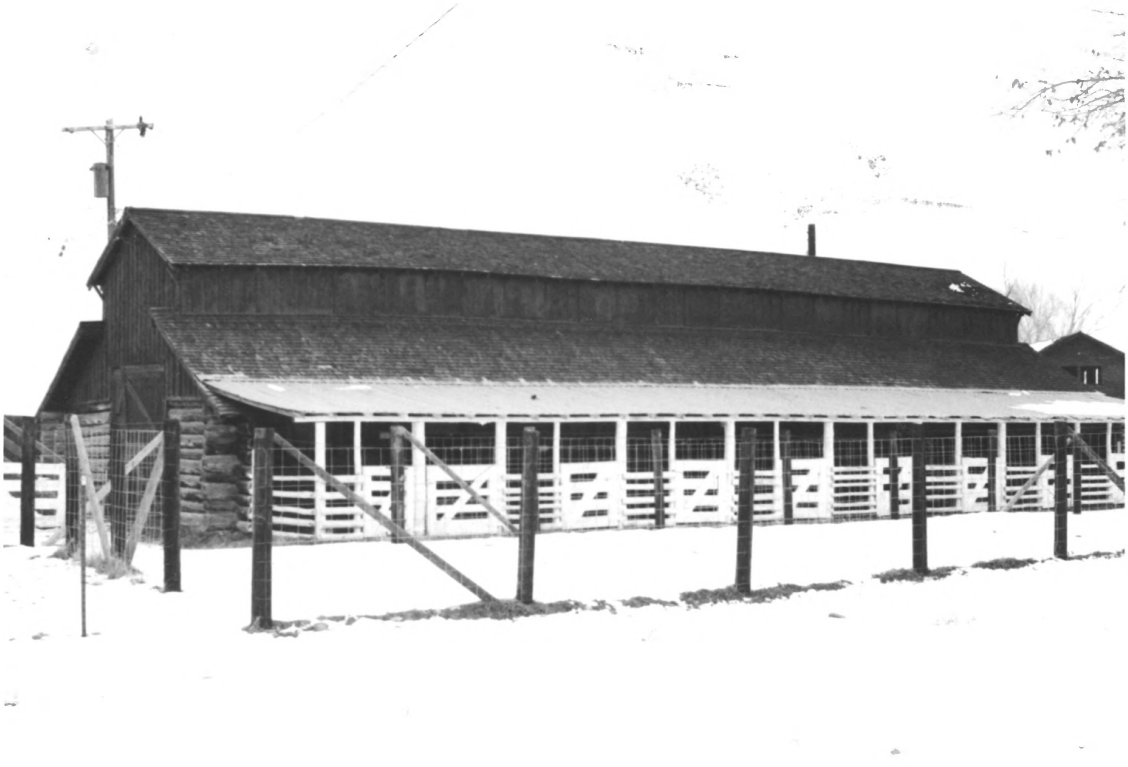
Taken by Garry L. Preston
Date, November, 1983
Taken from the North
Negatives held by Fair Board
Twin Bridges, Montana 59754



MADISON COUNTY FAIR
TWIN BRIDGES, MONTANA
STOCK SHED OR DAIRY BARN
FRONT ELEVATION

Taken by Garry L. Preston
Date, November, 1983
View from the South/East
Negatives held by Fair Board

Twin Bridges, Montana 59754



MADISON COUNTY FAIR GROUNDS
TWIN BRIDGES, MONTANA
ONE OF TWO IDENTICAL STOCK BARNS
USED AS SHEEP BARN
FIGURE FIVE ON PLOT MAP
BACK ELIVATION

Taken by Garry L. Preston
Date, November, 1983
View from the South
Negatives held by Fair Board
Twin Bridges, Montana 59754



MADISON COUNTY FAIR GROUNDS

TWIN BRIDGES, MONTANA

SMALL LOG HOUSE

HAND CUT LOG CEILING

Taken by Garry L. Preston

Taken in November, 1983

Negatives held by Fair Board

Twin Bridges, Mont 59754



MADISON COUNTY FAIR
TWIN BRIDGES, MONTANA
STOCK SHED OR DAIRY BARN
BACK ELIVATION

Taken by Garry L. Preston 11/83
View from North/West
Negatives Held by Fair Board
Twin Bridges, Montana 59754



MADISON COUNTY FAIR
TWIN BRIDGES, MONTANA
THE " PAVILION " "
INTERNAL STRUCTURE OF "CUPOLA"
OR " LANTERN"

Taken by Garry L. Preston 11/83
negatives held by Fair Board
Twin Bridges, Montana 59754



MADISON COUNTY FAIR GROUNDS
TWIN BRIDGES, MONTANA
SMALL LOG HOUSE
BACK ELIVATION

Taken By Garry L. Preston
Taken from the South
Taken in November, 1983
Negatives held by Fair Board
Twin Bridges, Mont 59754



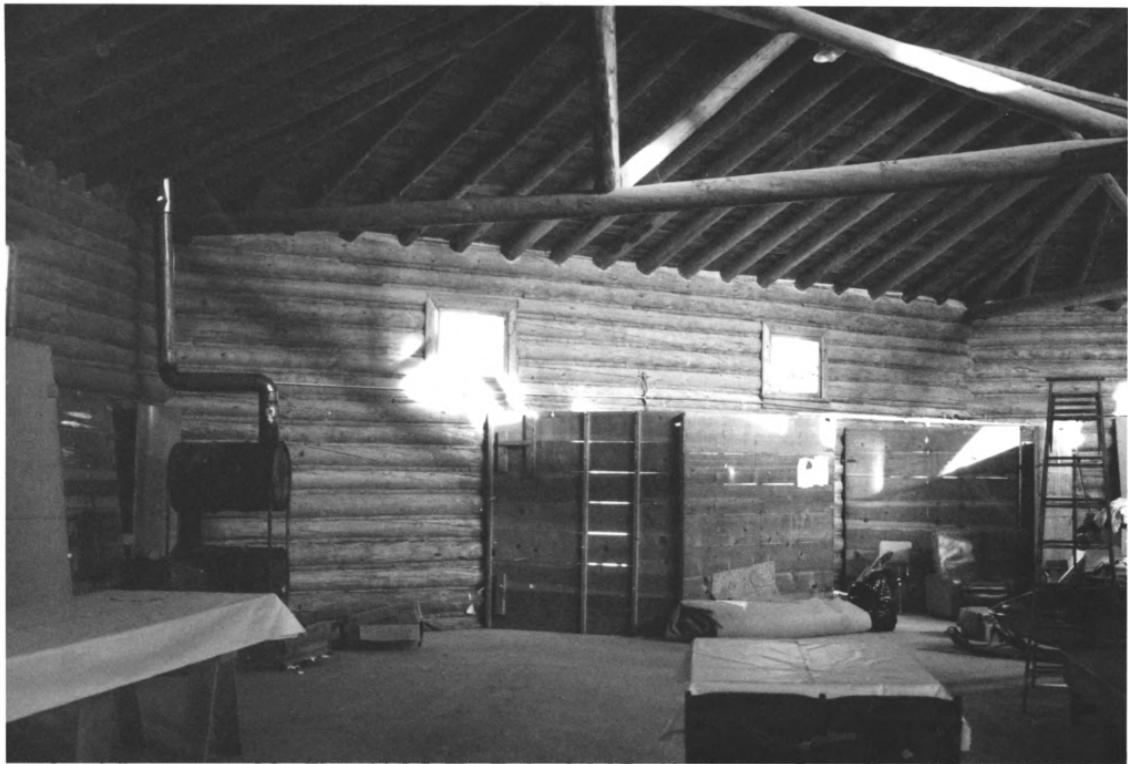
MADISON COUNTY FAIR GROUNDS

TWIN BRIDGES, MONTANA

THE " PAVILION "

INSIDE DETAIL

Taken by Garry L. Preston 11/83
Negatives taken by Fair Board
Twin Bridges, Montana 59754



MADISON COUNTY FAIR GROUNDS
TWIN BRIDGES, MONTANA
THE " PAVILION "
INSIDE DETAIL

Taken by Garry L. Preston 11/83
negatives held by Fair Board
Twin Bridges, Montana 59754



Taken by Garry L. Preston

Date, November, 1983

Negatives held by Fair Board

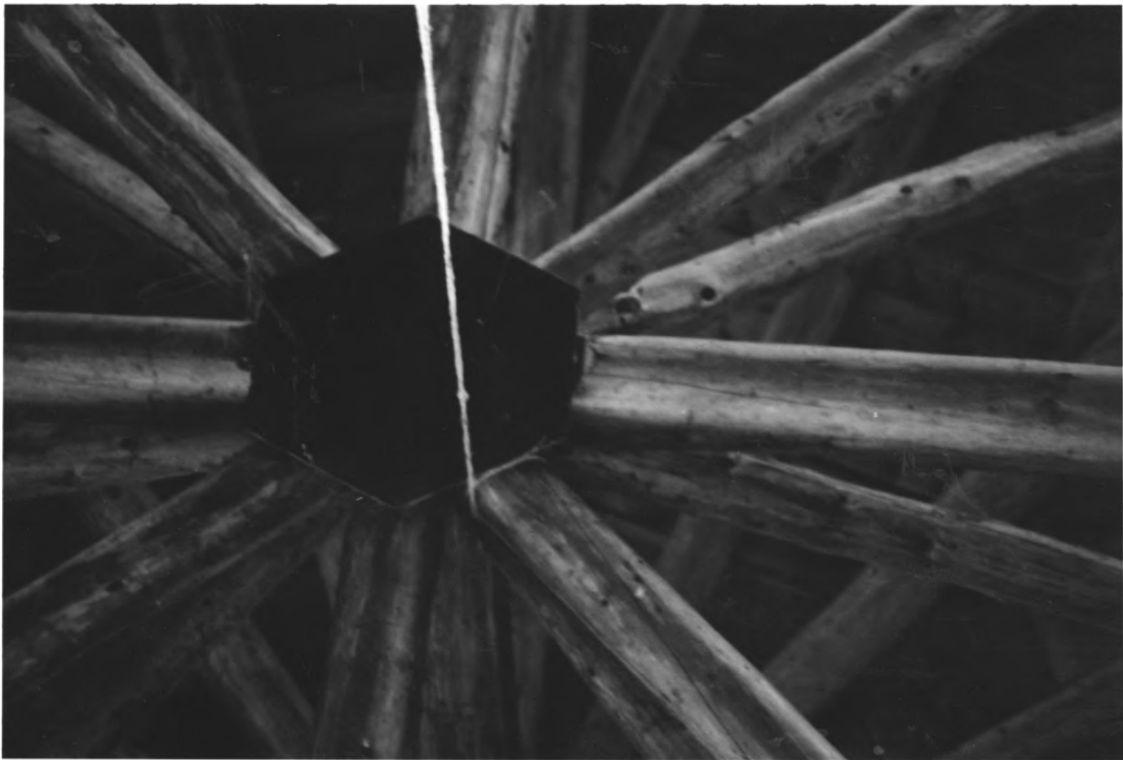
Twin Bridges, Mont 59754

MADISON COUNTY FAIR GROUNDS
TWIN BRIDGES MONTANA

THE " PAVILION"

E ONE OF THE EIGHT IDENTICAL
JUNCTURES, NOTCHES ARE VERY
CLOSE FIT, AND AT CORRECT
ANGLE

LOGS ARE LODGE POLE PINE



MADISON COUNTY FAIR GROUNDS

TWIN BRIDGES, MONTANA

THE "PAVILION"

CLOSE UP OF THE CENTER PART OF THE

LANTERN

TAKEN BY GARRY L. PRESTON

NEGATIVES HELD BY FAIR BOARD

TWIN BRIDGES, MONTANA 59754



MADISON COUNTY FAIR GROUNDS
TWIN BRIDGES, MONTANA
THE "PAVILION"
TAKEN FROM THE NORTH

Taken by Garry L. Preston /11/83
Negatives held by Fair Board
Twin Bridges, Montana 59754



MADISON COUNTY FAIR GROUNDS
TWIN BRIDGES, MONTANA
BEEF CATTLE BARN
FIGURE ~~FIVE~~ ON PLOT MAP
FOUR
BACK ELIVATION

Taken by Garry L. Preston
Date, November, 1983
View from North/East
Negatives held by Fair Board
Twin Bridges, Montana 59754



MADISON COUNTY FAIR GROUNDS
TWIN BRIDGES, MONTANA

GRANDSTAND FRONT ELIVATION

Taken by Garry L. Preston
Date, November, 1983
Taken from the North
Negatives held by Fair Board
Twin Bridges, Montana 59754



MADISON COUNTY FAIR GROUNDS

TWIN BRIDGES, MONTANA

THE " PAVILION "

DETAIL OF OUTSIDE

PHOTO TAKEN FROM NORTH EAST

BUILT ~~1936~~ - ~~1937~~ BY WPA

WPA (WORKERS PROGRESS ADMINIST.)

Taken by Garry L. Preston 11/83
Negatives held by Fair Board
Twin Bridges, Montana 59754



MADISON COUNTY FAIR GROUNDS
TWIN BRIDGES, MONTANA
ONE OF TWO IDENTICAL STOCK BARNS
BEEF CATTLE BARN
FIGURE ~~FIVE~~ ON PLOT MAP (R194)
FRONT ELIVATION

Taken by Garry L. Preston
Date, November, 1983
from the West
Negatives held by Fair Board
Twin Bridges, Montana 59754



Madison County Fair Grounds
Twin Bridges, Montana 59754

Exposition building (Metal)

Taken April 1984

by Garry L. Preston

Negatives held by Fair Board