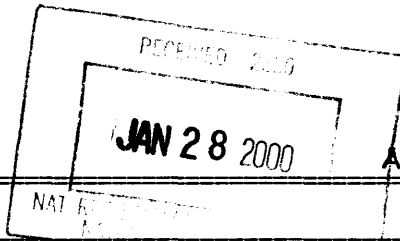


RECEIVED

United States Department of the Interior
National Park Service

NATIONAL REGISTER OF HISTORIC PLACES
REGISTRATION FORM



AUG 14 1998

126

Ala. Historical Commission

1. Name of Property

Historic Name: Quayle, Margaret, Lustron House

Other Names/Site Number: Quayle House

2. Location

Street & Number: 27 Parkview Drive Not for Publication: N/A

City or Town: Tuscaloosa Vicinity: N/A

State: Alabama Code: AL County: Tuscaloosa Code: 125

Zip Code: 35401

3. State/Federal Agency Certification

As the designated authority under the National Historic Preservation Act of 1986, as amended, I hereby certify that this X nomination ___ request for determination of eligibility meets the documentation standards for registering properties in the National Register of Historic Places and meets the procedural and professional requirements set forth in 36 CFR Part 60. In my opinion, the property X meets ___ does not meet the National Register Criteria. I recommend that this property be considered significant ___ nationally ___ statewide X locally. (___ See continuation sheet for additional comments.)

[Signature] Alabama Historical Commission
Signature of certifying official (State Historical Preservation Office) Date 1/20/00
State or Federal agency and bureau

In my opinion, the property ___ meets ___ does not meet the National Register criteria. (___ See continuation sheet for additional comments.)

Signature of commenting or other official State or Federal agency and bureau Date

4. National Park Service Certification

I, hereby certify that this property is:

- entered in the National Register ___ See continuation sheet.
- determined eligible for the National Register ___ See continuation sheet.
- determined not eligible for the National Register
- removed from the National Register
- other (explain: _____)

Edson R. Beall 2/24/00
Signature of Keeper Date of Action
[Signature]

Margaret Ouayle Lustron House
Name of Property

Tuscaloosa County, Alabama
County and State

5. Classification

Ownership of Property (Check as many boxes as apply)

- private
 public-local
 public-State
 public-Federal

Category of Property (Check only one box)

- building(s)
 district
 site
 structure
 object

Number of Resources within Property

Contributing	Noncontributing	
1	0	buildings
0	0	sites
0	0	structures
0	0	objects
1	0	Total

Number of contributing resources previously listed in the National Register N/A

Name of related multiple property listing (Enter "N/A" if property is not part of a multiple property listing.):

Lustron Houses In Alabama

6. Function or Use

Historic Functions (Enter categories from instructions)

Category:
DOMESTIC

Subcategory:
Single Dwelling

Current Functions (Enter categories from instructions)

Category:
DOMESTIC

Subcategory:
Single Dwelling

7. Description

Architectural Classification (Enter categories from instructions)

Other: Lustron House

Materials (Enter categories from instructions)

foundation	<u>Concrete</u>
roof	<u>Metal: Steel</u>
walls	<u>Metal: Steel</u>
other	<u>Metal: Steel, Glass</u>

Narrative Description (Describe the historic and current condition of the property on one or more continuation sheets.)

(See Continuation Sheet Section 7 Page 1)

Margaret Ouayle Lustron House
Name of Property

Tuscaloosa County, Alabama
County and State

8. Statement of Significance

Applicable National Register Criteria (Mark "x" in one or more boxes for the criteria qualifying the property for National Register listing)

- A Property is associated with events that have made a significant contribution to the broad patterns of our history.
- B Property is associated with the lives of persons significant in our past.
- C Property embodies the distinctive characteristics of a type, period, or method of construction or represents the work of a master, or possesses high artistic values, or represents a significant and distinguishable entity whose components lack individual distinction.
- D Property has yielded, or is likely to yield information important in prehistory or history.

Criteria Considerations (Mark "X" in all the boxes that apply.) N/A

- A owned by a religious institution or used for religious purposes.
- B removed from its original location.
- C a birthplace or a grave.
- D a cemetery.
- E a reconstructed building, object, or structure.
- F a commemorative property.
- G less than 50 years of age or achieved significance within the past 50 years.

Areas of Significance (Enter categories from instructions)

Architecture
Engineering

Period of Significance

1949

Significant Dates

1949

Significant Person (Complete if Criterion B is marked above): N/A

Cultural Affiliation: N/A

Architect/Builder:

Koch, Carl and Associates (Architect)

Lustron Corporation (Builder)

Narrative Statement of Significance (Explain the significance of the property on one or more continuation sheets.)

(See Continuation Sheet Section 8 Page 3)

Margaret Quayle Lustron House
Name of Property

Tuscaloosa County, Alabama
County and State

9. Major Bibliographical References

(Cite the books, articles, and other sources used in preparing this form on one or more continuation sheets.)

Previous documentation on file (NPS) N/A

- preliminary determination of individual listing (36 CFR 67) has been requested.
- previously listed in the National Register
- previously determined eligible by the National Register
- designated a National Historic Landmark
- recorded by Historic American Buildings Survey # _____
- recorded by Historic American Engineering Record # _____

Primary Location of Additional Data

- State Historic Preservation Office
- Other State agency
- Federal agency
- Local government
- University
- Other

Name of repository: _____

10. Geographical Data

Acreage of Property: less than one acre

UTM References (Place additional UTM references on a continuation sheet)

	Zone	Easting	Northing	Zone	Easting	Northing
1	<u>16</u>	<u>448900</u>	<u>36733603</u>	___	___	___
2	___	___	___	4	___	___

___ See continuation sheet.

Verbal Boundary Description (Describe the boundaries of the property on a continuation sheet.)

Boundary Justification (Explain why the boundaries were selected on a continuation sheet.)

11. Form Prepared By

Name/Title: Gene A. Ford, Architectural Historian; Susan Enzweiler, AHC Historian; Trina Binkley, AHC Reviewer

Organization: The University of Alabama, Office of Archaeological Services Date: September 9, 1997

Street & Number: 13075 Moundville Archaeological Park Telephone: (205) 348-7774

City or Town: Moundville State: Alabama Zip Code: 35474

Margaret Quayle Lustron House
Name of Property

Tuscaloosa County, Alabama
County and State

Additional Documentation

Submit the following items with the completed form:

Continuation Sheets

Maps

A USGS map (7.5 or 15 minute series) indicating the property's location.

A sketch map for historic districts and properties having large acreage or numerous resources.

Photographs

Representative black and white photographs of the property.

Additional items (Check with the SHPO or FPO for any additional items)

Property Owner

(Complete this item at the request of the SHPO or FPO.)

Name: Morgan Tunstall

Street & Number: 1124 Pinemont Drive North Telephone: (205) 752-5763

City or Town: Tuscaloosa State: Alabama Zip Code: 35406

United States Department of the Interior
National Park Service

NATIONAL REGISTER OF HISTORIC PLACES
CONTINUATION SHEET

Section 7 Page 1

Margaret Quayle Lustron House
Name of Property

Tuscaloosa County, Alabama
County and State

The Margaret Quayle Lustron House, located in Tuscaloosa, Tuscaloosa County, Alabama, is a one story, metal, prefabricated house. Built in 1949, the Margaret Quayle House features a metal side gable roof. Exterior siding consists of 2 ft. square porcelain enamelled metal panels. Two aluminum frame windows, which coincide with a bedroom and the living room, respectively, punctuate the front facade of the house. A portion of the front facade and adjoining side wall are inset forming a porch with an engaged roof. A single metal post supports the roof on the porch. There is a downspout attached to the porch support. A metal and glass panel door and an aluminum frame window pierce the south side of the all metal house. Fenestration on the rear facade includes three aluminum frame windows and a metal and glass panel door. Two aluminum frame windows punctuate the north side of the prefabricated home. The home rests on a concrete block foundation. Inside, the Lustron features metal wall and ceiling panels and built in cabinets, shelves, and a vanity. The Margaret Quayle Lustron House, a fine example of the two bedroom Westchester model (one of nine in Alabama), retains a high degree of integrity and is in excellent condition.

The Margaret Quayle Lustron House is situated on a 60 ft x 120 ft lot in a post World War II subdivision of Tuscaloosa, Alabama. The all metal prefab is surrounded by numerous wood frame minimal traditional cottages. The Westchester model measures 31 ft x 35 ft and resembles the quintessential ranch house with its low profile, side gable roof, and sleek rectangular configuration. One must make a double take to realize that this prefabricated house is slightly different than its neighbors. A scattering of foliage embellishes the associated yard.

A side gable roof of metal panels crowns the Lustron House. The panels are fashioned to imitate the look of ceramic tiles. Painted brown, the porcelain enamelled metal panels are bolted to metal roof trusses. Vertical metal panels cover the gable ends. Attached to the roof and extending along the entire front facade is a metal gutter. A downspout conducts rain water from the gutter to the ground below.

The exterior skin of the Margaret Quayle Lustron House consists of porcelain enamelled panels. Painted a permanent tan, the panels measure 2 ft square. The tan finish of the exterior is factory produced and represents one of the seven basic stock colors of the Lustron palette. The exterior of the prefabricated abode does not show any signs of rust, fading, or other deleterious effects from the elements.

Two windows constitute the fenestration of the front facade. Measuring 6 ft x 8 ft, these windows feature a large, fixed, central, plate glass window flanked on either side by a four-light casement window. The frames are constructed of aluminum. The south most of the two slightly projects beyond the wall much like a bay window.

The southeast corner of the Margaret Quayle House is recessed, creating a 12 ft x 5 ft inset porch. Supporting the end of the engaged roof over the porch is a metal post to which the factory issue downspout is attached. A metal and glass panel door is located at the northeast corner of the porch; the door leads to the living room.

A window opening is cut into the south wall of the prefabricated house. It is fitted with a window similar in design to those of the front facade. The window coincides with the dining room.

United States Department of the Interior
National Park Service

NATIONAL REGISTER OF HISTORIC PLACES
CONTINUATION SHEET

Section 7 Page 2

Margaret Quayle Lustron House
Name of Property

Tuscaloosa County, Alabama
County and State

Fenestration on the rear facade of the Lustron House consists of four openings. The kitchen window opening measures 4 ft square and is fitted with a six light casement window. A doorway is fitted with a metal and glass panel door similar in design to that of the front door. The door leads to the utility room and kitchen. A 4 ft x 2 ft, three light casement serves as the bathroom window. The bedroom window is like those of the front facade.

Two rectangular windows pierce the north wall of the Lustron House. They measure 4 ft square and have a six light casement.

The interior of the Lustron House appears much as it did when it was erected in 1949. For the most part, the ceiling and wall panels have not been covered or replaced with sheetrock, wood paneling, or other nonoriginal material. The one exception is the north wall of the northeast corner bedroom. After a fire in 1991, several of the interior wall panels were replaced with those constructed of wood (Tunstall 1997). While the wood panels are not a Lustron stock material, they represent a minor concession with respects to the original look of the all metal house. Emitting from the porcelain enamelled panels is a lustrous sheen that glows as much as the day the panels were removed from the Lustron Corporation plant ovens in Columbus, Ohio. Throughout the interior, there is indoor/outdoor, mohair, or tight and short napped carpet. While the carpet is not a Lustron stock material, it is a minor concession with respects to the original look of the all metal house.

Intact in the interior of the house is an array of built in creature comforts. The living room features a built in book shelf and a complimentary cabinet. The wall divider between the dining room and kitchen has space saving metal cabinets, drawers, and shelves. Metal cabinets line the walls of the kitchen. The original furnace located in the utility room gave out in 1991 and was replaced with an exterior central air and heat pump (Tunstall 1997). The master bedroom retains its built in vanity and closets. Metal closets are also featured in the second bedroom. The oval, metal, Lustron identification placard bearing the serial number of the house, #632, is present on one of the utility room walls.

Archaeological Component

Although no formal archaeological survey has been conducted, there is the potential for subsurface remains.

United States Department of the Interior
National Park Service

NATIONAL REGISTER OF HISTORIC PLACES
CONTINUATION SHEET

Section 8 Page 3

Margaret Quayle Lustron House
Name of Property

Tuscaloosa County, Alabama
County and State

Significance

The Margaret Quayle House meets the standards established by Criterion C for listing in the National Register of Historic Places and falls under the "Lustron Houses in Alabama" MPS. The Lustron House is significant in the areas of architecture and engineering for its associations with the prefabricated housing industry and nation wide housing shortage immediately following World War II. The Margaret Quayle Lustron House rates as an outstanding example of the component part technology and all steel construction that the Lustron Corporation utilized in the manufacture of its prefabricated houses from 1946 to 1950. The prefabricated house is the sum total of a critically acclaimed engineering process that included a state of the art factory, production line, storage and distribution system, and marketing strategy. Additionally, the Lustron House embodies the distinct characteristics of post World War II architecture, such as an overall design that was at once contemporary and historic, durability, easy maintenance, and built in creature comforts. It is historically linked with Southern Sash, the dealer of Lustron Houses in northern Alabama and southern Tennessee, which played a critical role in sales and dissemination of information. As one of only eleven extant Lustrons in the state of Alabama, the Margaret Quayle House is part of a small yet significant group of houses that represent the development of prefabricated housing in the state. As Lustron promotional information boasted, the Margaret Quayle House has retained a high degree of its original appearance through its history and is likely to do so for the next half century as well.

Historical Summary

The Margaret Quayle House is one of eleven extant Lustron Houses in Alabama. The Lustron House was marketed by Milton Cooper Contracting Co. in Northport, Alabama. Milton Cooper Contracting Co. owned the Lustron distribution rights for Tuscaloosa and Northport (Lustron Corporation 1950). The Margaret Quayle Lustron House is the only Lustron to be built in the Tuscaloosa area.

Once the partnership of Milton Cooper Contracting Co. and the Lustron Corporation was struck, an advertisement campaign began in September, 1949. The first advertisement promoting the many benefits of a prefabricated Lustron House appeared in the September 5, 1949 edition of the *Tuscaloosa News*. On September 29, 1949 in the Want Ads, the following add appeared:

Parkview #27 Lustron House. A New Standard of Living. A Home of Permanence. No Termite Hazard. Never Repaint. Never Reroof. Radiant Ceiling Heating. Dishwasher, Clotheswasher and Dryer, 52 Gallon Water Heater. Built in China Cabinet, Book Case, Vanity, and Many Other Built in Features. Insulated Ceiling and Walls. Fireproof. Aluminum Windows and Screen Doors with Aluminum Wire. Sliding Interior Doors.

The add appeared up to October 5, 1949 and then disappeared from the *Tuscaloosa News*.

The original owner of the Tuscaloosa Lustron was Ms. Margaret Quayle. Quayle headed the Clinical Psychology Department at the University of Alabama in the 1950s (Geddes 1997). The chain of ownership eventually

United States Department of the Interior
National Park Service

NATIONAL REGISTER OF HISTORIC PLACES
CONTINUATION SHEET

Sections 8,9,10 Page 4

Margaret Quayle Lustron House
Name of Property

Tuscaloosa County, Alabama
County and State

passed to a Mrs. McMullen according to current owner Morgan Tunstall (1997). Tunstall bought the Lustron House and associated lot from McMullen on May 25, 1977 as documented by Deed Book 733, Page 193. Tunstall uses the Lustron House as rental property.

Bibliography

Deed Book 733, Page 193. Deed Document maintained on file at the Tuscaloosa County Courthouse,
Tuscaloosa, Alabama.

Geddes, Fran. Phone Interview. October 24, 1997.

Lustron Corporation. Dealer Performance Record. Columbus. 1950.

Tunstall, Morgan. Phone Interview. October 24, 1997.

Tuscaloosa News. Lustron Advertisement. September 5, 1949.

Lustron Advertisement. September 29, 1949.

Lustron Advertisement. October 5, 1949.

Verbal Boundary Description

The boundary of the Margaret Quayle Lustron House is demarcated in Figure 2, which is derived from Tuscaloosa County Tax Map #63-31-06-23-4.

Boundary Justification

The delineated boundaries include the house and lot historically associated with the Lustron House located at 27 Parkview Drive, Tuscaloosa, Alabama.

United States Department of the Interior
National Park Service

NATIONAL REGISTER OF HISTORIC PLACES
CONTINUATION SHEET

Section Photographs Page 5

Margaret Quayle Lustron House
Name of Property

Tuscaloosa County, Alabama
County and State

Photographs

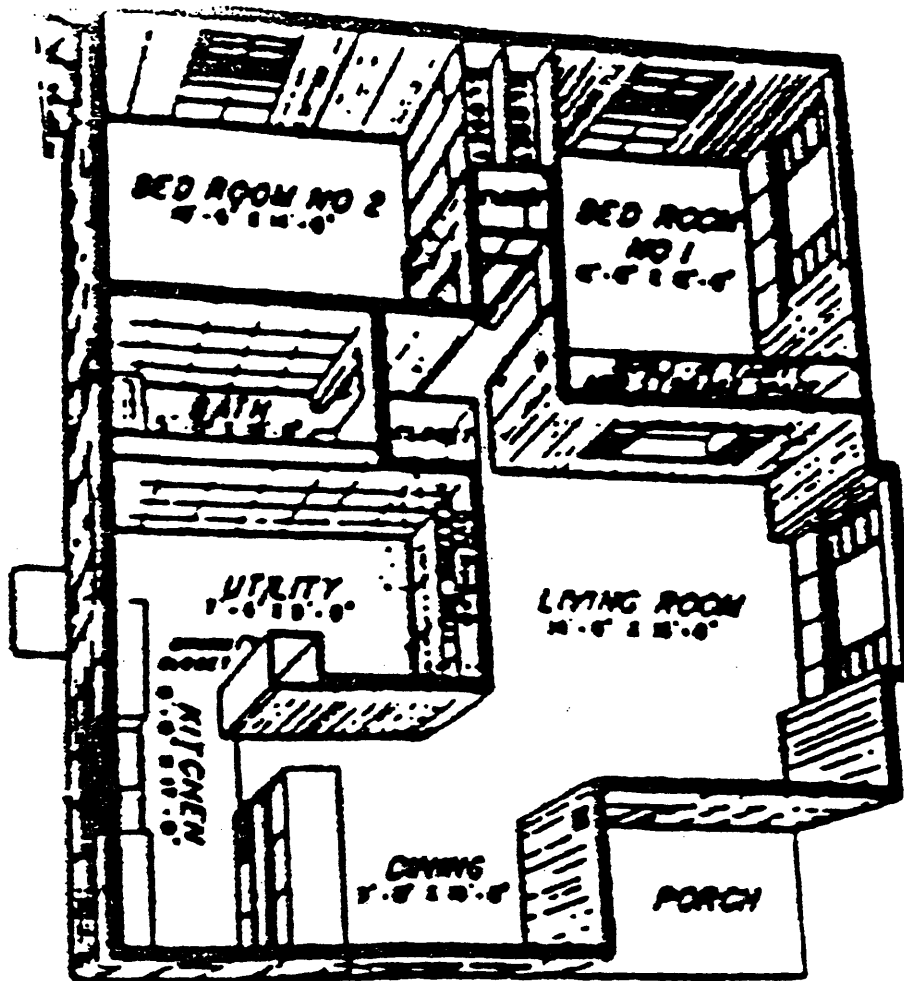
Margaret Quayle Lustron House
Tuscaloosa, Tuscaloosa County, Alabama

Photos By: Gene A. Ford
Office of Archaeological Services
Moundville, Alabama 35474

Negatives: Alabama Historical Commission
468 South Perry Street
Montgomery, Alabama 36130-0900

Date: December 26, 1996

1. Front and South Elevations.
2. Front and North Elevations.
3. Rear and South Elevations.



Floor plan,
Westchester two-bedroom
model.

Figure 1.
MARGARET QUALYE LUSTRON HOUSE, TUSCALOOSA COUNTY, ALABAMA