



Whitney Plantation Historic District

Wallace vicinity, St. John the Baptist Parish, LA

Jay Edwards

May 1991

Louisiana State University, Dept. of Anthropology &

Northwest

Geography, Baton Rouge,
LA 70803-4105

Photo No. 24

Buildings # 6 - Unknown Use (left)

1 - Main House (right)



Whitney Plantation Historic District

Wallace vicinity, St. John the Baptist Parish, LA

Jay Edwards

May 1991

Louisiana State University, Dept. of Anthropology
South

Photo No. 25

+Geography, Baton
Rouge, La 70803-4105

Building #12, Overseer's House



Whitney Plantation Historic District
Wallace vicinity, St. John the Baptist Parish,
Patricia Duncan LA

9/30/92

LASHPO

Northeast

Photo No, 26

General view, left to right

Bldg # 8	Pump House / Shed
# 6	Unknown use
# 1	Main House
# 15	Creole Barn
# 12	Overseer's House



Whitney Plantation Historic District

Wallace vicinity, St. John the Baptist Parish, LA

Jay Edwards

May 1991

Louisiana State University, Dept. of Anthropology +
Northwest Geography, Baton Rouge,
Photo No. 27 LA 70803-4105

Building #9 - Modern Agricultural Shed (non
contributing)



Whitney Plantation Historic District
Wallace vicinity, St. John the Baptist Parish, LA

Jay Edwards

May 1991

Louisiana State University, Dept. of Anthropology &
West/Southwest Geography, Baton Rouge,
Photo No. 29 LA 70803-4105

Building #7, Early 19th Century Barn



Whitney Plantation Historic District

Wallace vicinity, St. John the Baptist Parish,
Patricia Duncan LA

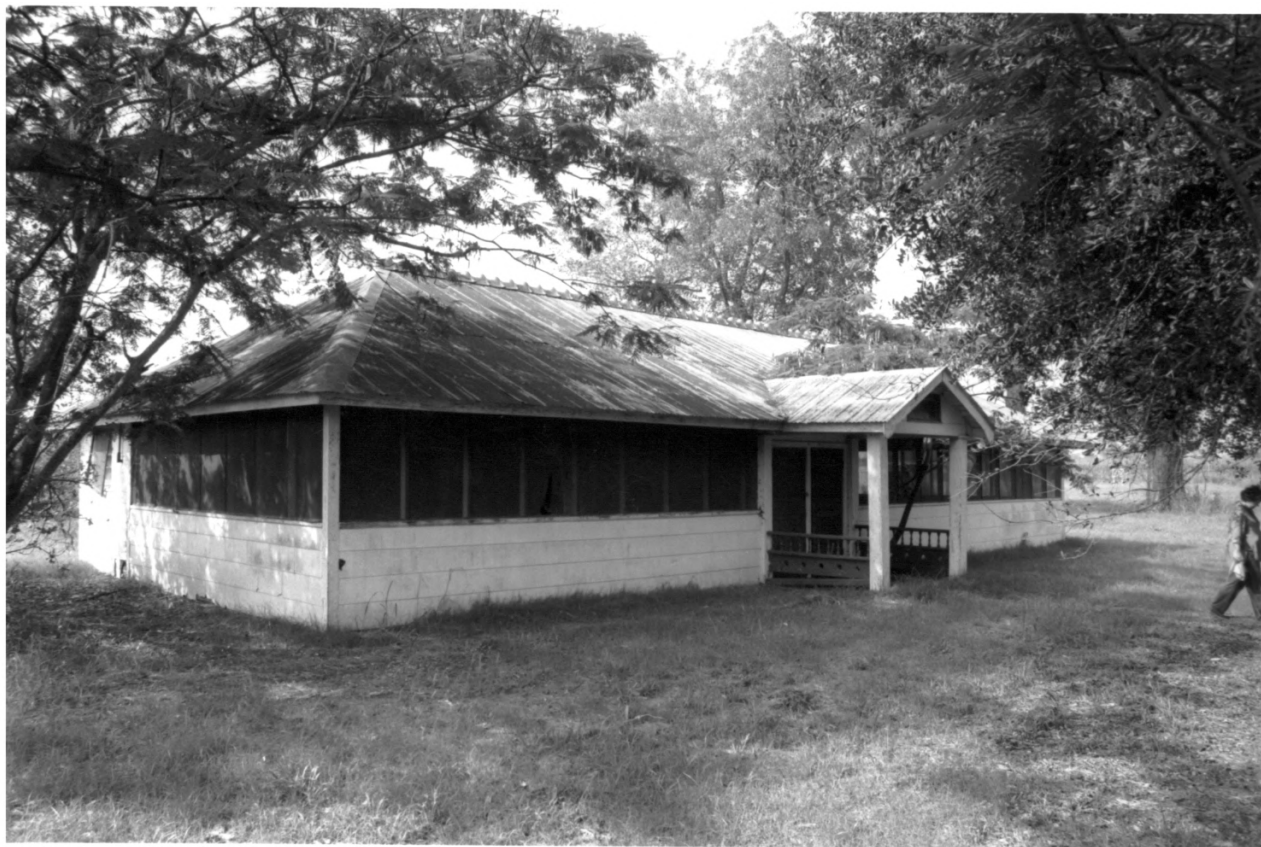
9/30/92

LASHPO

East

Photo No. 30

General View: Bldg # 1 Main House (left)
6 Unknown Use (middle)
15 Crede Barn (right)



Whitney Plantation Historic District

Wallace vicinity, St. John the Baptist Parish, LA

Jay Edwards

May 1991

Louisiana State University, Dept. of Anthropology
+ Geography, Baton Rouge,
LA 70803-4105

Photo No. 31

Building # 3 - Entertainment Pavilion (non-
contributing)



Whitney Plantation Historic District

Wallace vicinity, St. John the Baptist Parish, LA

Jay Edwards

May 1991

Louisiana State University, Dept. of Anthropology &
Southeast Geography, Baton Rouge,

Photo No. 32

LA 70803-4105

Building #1, Main House



Whitney Plantation Historic District

Wallace vicinity, St. John the Baptist Parish, LA

Jay Edwards

May 1991

Louisiana State University, Dept. of Anthropology

Northwest

& Geography, Baton Rouge,

Photo No. 33

LA 70803-4105

Building #2, Shed (Non-contributing)



Whitney Plantation Historic District

Wallace vicinity, St. John the Baptist Parish, LA

Jay Edwards

March 1992

Louisiana State University, Dept. of Anthropology &
South

Geography, Baton Rouge,

Photo No. 35

LA 70803-4105

Archaeology Site 1650B 55



Whitney Plantation Historic District
Wallace vicinity, St. John the Baptist Parish, LA
Patricia Duncan

9/30/92

LASHPO

Southwest

Photo No. 36

General View

Bldg # 26 Mialaret Barn (left)

#²⁷ 1884 Mialaret House (right)



Whitney Plantation Historic District

Wallace vicinity, St. John the Baptist Parish, LA

Jay Edwards

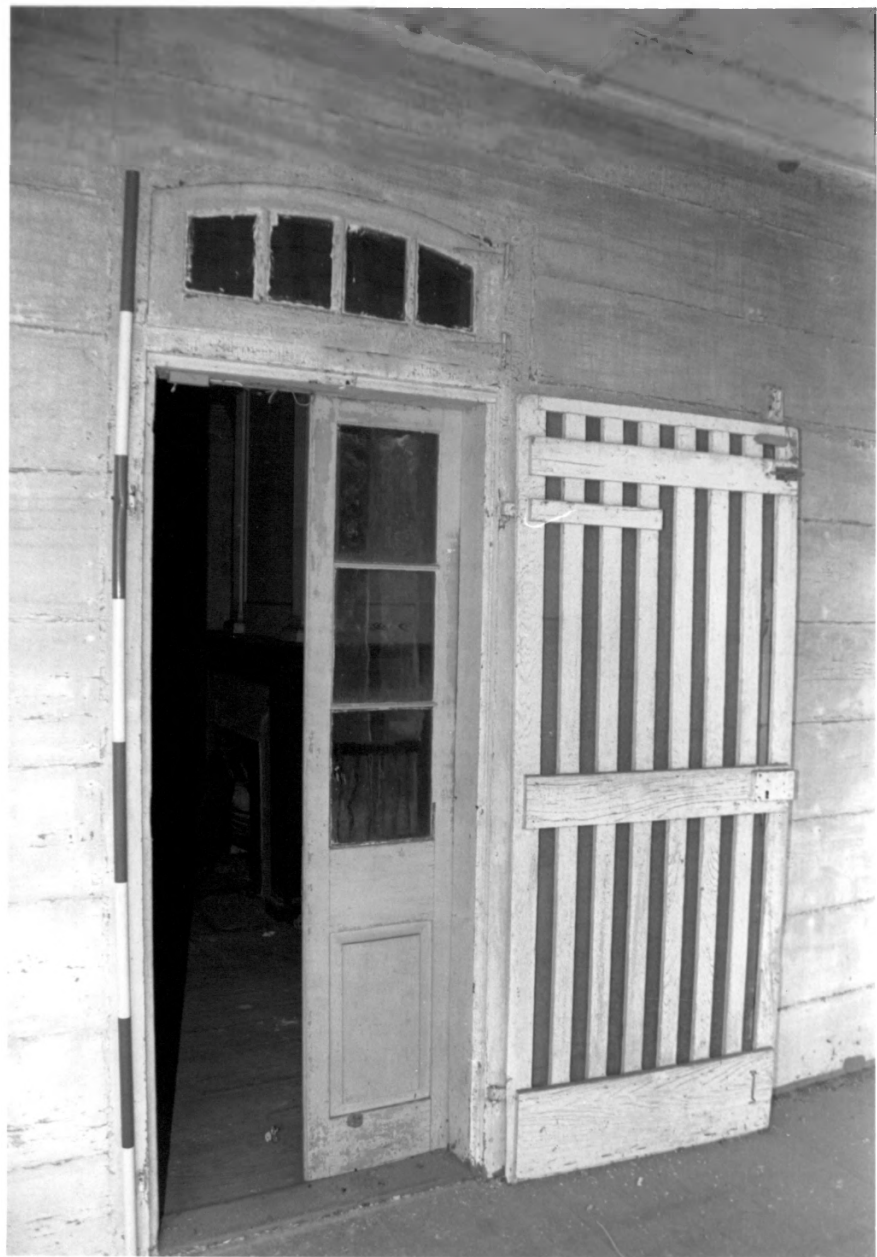
May 1991

Louisiana State University, Dept. of Anthropology &
Southwest Geography, Baton Rouge,

Photo No. 37

LA 70803-4105

Building # 27, 1884 Mialaret House



Whitney Plantation Historic District

Wallace vicinity, St. John the Baptist Parish, LA

Jay Edwards

May 1991

Louisiana State University, Dept. of Anthropology &

Gallery / French Door Detail Geography, Baton Rouge,

Photo No. 38

LA 70803-4105

Building #1, Main House



Whitney Plantation Historic District
Wallace vicinity, St. John the Baptist Parish, LA
Jay Edwards

1991

Louisiana State University, Dept. of Anthropology &
Interior - Chamberlaine
Geography, Baton Rouge,
Photo No. 40 LA 70803-4105

Building #1, Main House



Whitney Plantation Historic District

Wallace vicinity, St John the Baptist Parish, LA

Jay Edwards

May 1991

Louisiana State University, Dept. of Anthropology &
Interior - chambre Geography, Baton Rouge,

Photo No. 41

Building #1, Main House

LA 70803-4105



Whitney Plantation Historic District

Wallace vicinity, St. John the Baptist Parish, LA

Jay Edwards

May 1991

Louisiana State University, Dept. of Anthropology

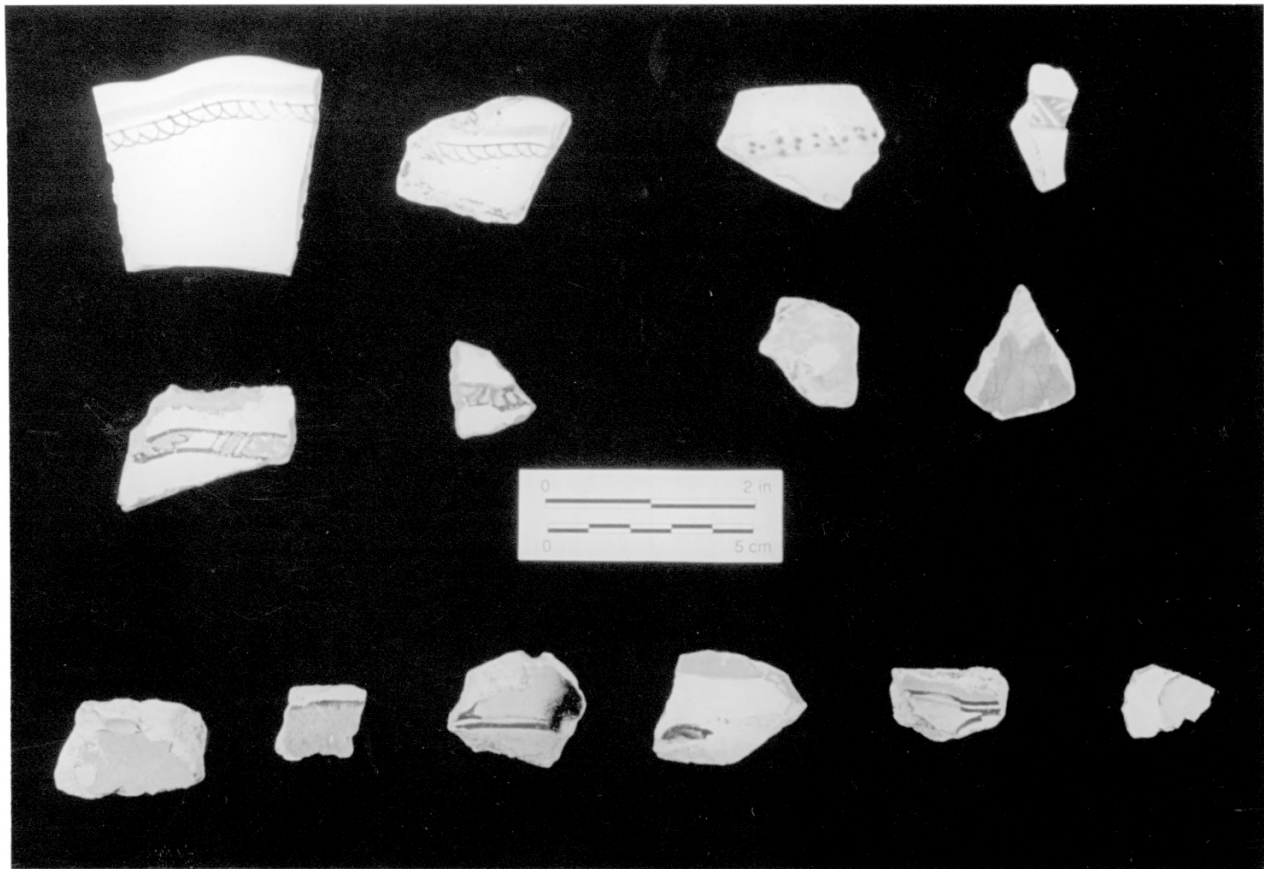
Lossia Detail

& Geography, Baton

Photo No. 47

Rouge, LA 70803-4105

Building #1, Main House



Whitney Plantation Historic District

St. John the Baptist Parish, LA - Wallace vicinity

Don Hunter

September 1991

Coastal Environments, Inc., 1260 Main St,
Baton Rouge, LA 70802

Tin Enamelled Earthenware, Archaeology Site 165JB42

Photo No. 48

165JB42



Whitney Plantation Historic District

Wallace vicinity, St. John the Baptist Parish, LA

Don Hunter

May 1991

1260 Main St.
Coastal Environments, Inc., Baton Rouge, LA 70802

South

Photo No. 34

Main House (#1) + pigeonier foundation



Whitney Plantation Historic District
Wallace vicinity, St. John the Baptist Parish, LA

Jay Edwards

May 1991

Louisiana State University, Dept. of Anthropology &
East Geography, Baton Rouge,

Photo No. 28

La 70803 - 4105

Building #8 - Pump House / Shed (non-contributing)



Whitney Plantation Historic District

Wallace vicinity, St. John the Baptist Parish, LA

Jay Edwards

May 1991

Louisiana State University, Dept. of Anthropology &
Geography, Baton Rouge,
LA 70803-4105

Lossia Painting
Photo No. 46

Building #1, Main House



Whitney Plantation Historic District

Wallace vicinity, St. John the Baptist Parish, LA
Jay Edwards

May 1991

Louisiana State University, Dept. of Anthropology &
Geography, Baton

Lossia Painting
Photo No. 45

Rouse, LA 70803-4105

Building #1, Main House



Whitney Plantation Historic District
Wallace vicinity, St. John the Baptist Parish, LA

Jay Edwards

May 1991

LASHPO

Interior - Painted Ceiling - Salle
photo No. 43

Building #1, Main House



Whitney Plantation Historic District
Wallace vicinity, St. John the Baptist Parish, LA

Jay Edwards

May 1991

LASHPO

Interior - Painted Ceiling - Salle
photo No. 44

Building #1, Main House



Whitney Plantation Historic District

Wallace vicinity, St. John the Baptist Parish, LA

Jay Edwards

May 1991

Louisiana State University, Dept. of Anthropology &

Interior - detail of painted doors
Geography, Baton Rouge,

Photo Nos 42

LA 70803-
9105

Building #1, Main House



Whitney Plantation Historic District
Wallace vicinity, St. John the Baptist Parish, LA
Jay Edwards

May 1991

Louisiana State University, Dept. of Anthropology &
Interior - Salle Geography, Baton Rouge,
Photo No. 39 LA 70803-4105

Building #1, Main House



Whitney Plantation Historic District
Wallace vicinity, St. John the Baptist Parish, LA
Don Hunter

May 1991

Coastal Environments, Inc., ^{1260 Main St.} Baton Rouge, LA 70802

West/Northwest

Photo No. 1

Archaeology Site 16S0B 42



Whitney Plantation Historic District
Wallace vicinity, St. John the Baptist Parish,
Patricia Duncan LA

9/30/92

LASHPO

North

Photo No. 2

General View - Bldgs 12, 13, 14, 15, 18, 21, 23



Whitney Plantation Historic District
Wallace vicinity, St. John the Baptist Parish,
LA
Patricia Duncan

9/30/92

LASHPO

Northwest

Photo No. 3

General view - Bldgs 10, 9, 12, 13-15, 1



Whitney Plantation Historic District

Wallace vicinity, St. John the Baptist Parish,

Patricia Duncan

LA

9/30/92

LASHPO

Northwest

Photo No. 4

General View: Bldg # 10 - Modern Agri Shed (left)

9 - Modern Agri Shed (middle)

12 overseer's House (right)



Whitney Plantation Historic District
Wallace vicinity, St. John the Baptist Parish, LA
Jay Edwards

May 1991

Louisiana State University, Dept of Anthropology &
East
Northeast Geography, Baton Rouge, LA
70803-4105

Photo No. 5

Building #11, Garage (non-contributing)



Whitney Plantation Historic District

Wallace vicinity, St. John the Baptist Parish, LA

Jay Edwards

May 1991

Louisiana State University, Dept. of Anthropology, &
Geography, Baton Rouge,
LA 70803-4105

Photo No. 6

Building #13, Shed



Whitney Plantation Historic District

Wallace vicinity, St. John the Baptist Parish, LA

Don Hunter

May 1991

1260 Main St.
Coastal Environments, Inc., Baton Rouge, LA, 70802

North

Photo no. 7

Rear of Main House (#1)



Whitney Plantation Historic District
Wallace vicinity, St. John the Baptist Parish, LA

Jay Edwards

May 1991

Louisiana State University, Dept. of Anthropology &
South/Southeast Geography, Baton Rouge,

Photo No. 8

LA 70803-4105

Buildings # 17, Manager's House Storage Shed (left)
16, Manager's House Privy (right)



Whitney Plantation Historic District
Wallace vicinity, St. John the Baptist Parish,
Patricia Duncan LA

9/30/92

LASHPO

South

Photo No. 9

General view, left to right +

Bldg # 18 Modern Agri Shed

17 Manager's House Storage Shed

16 Manager's House Privy

15 French Creole Barn



Whitney Plantation Historic District

Wallace vicinity, St. John the Baptist Parish,

Patricia Duncan

LA

9/30/92

LASHPO

West

Photo No. 11

General View: Bldg #10 Modern Agri Shed (left
23 Pigeonnier (middle) ^{distance}
1 Main House (right)



Whitney Plantation Historic District

Wallace vicinity, St. John the Baptist Parish,

Patricia Duncan

LA

9/30/92

LASHPO

South

Photo No. 12

Buildings # 20 - Clerk's House (left)

21 - Manager's House (right)



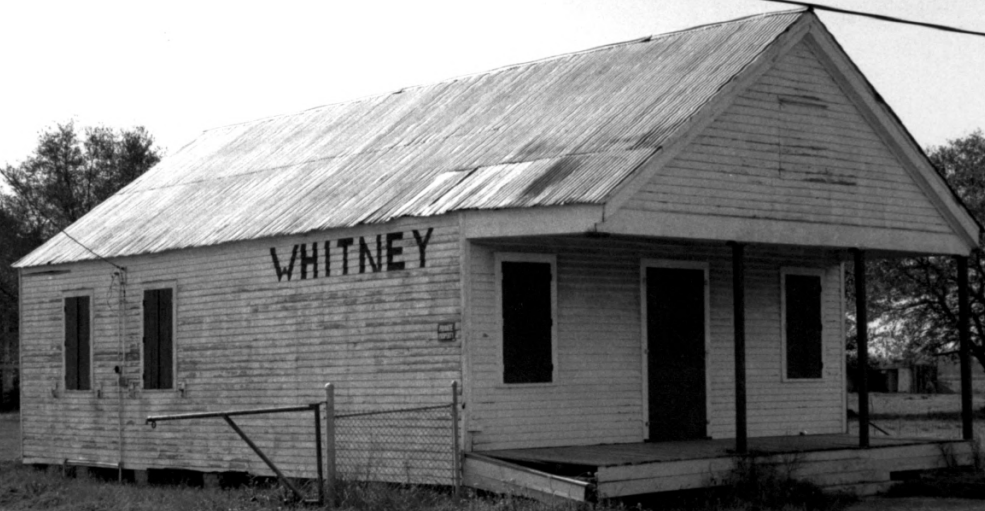
Whitney Plantation Historic District

Wallace vicinity, St. John the Baptist Parish, LA
Jay Edwards

May 1991

Louisiana State University, Dept of Anthropology &
Southwest Geography, Baton Rouge,
Photo No. 10 LA 70803-4105

Building #21 - Manager's House



WHITNEY

Whitney Plantation Historic District

Wallace vicinity, St. John the Baptist Parish, LA

Jay Edwards

May 1991

Louisiana State University, Dept. of Anthropology &
West

Photo No. 13

Geography, Baton Rouge,

LA 70803-4105

Building #24, Plantation Store



Whitney Plantation Historic District
Wallace vicinity, St. John the Baptist Parish,
Patricia Durean LA

9/30/92

LASHPO

Southwest

Photo No. 14

General View

Bldg # 23 - Piseonnier (left)

24 - Plantation Store (right)



Whitney Plantation Historic District

Wallace vicinity, St. John the Baptist Parish, LA

Jay Edwards

May 1991

Louisiana State University, Dept. of Anthropology &

Northeast

Geography, Baton Rouge,

Photo No. 15

LA 70803-4105

Building #23, Piseonnier



Whitney Plantation Historic District

Wallace vicinity, St. John the Baptist Parish, LA

Jay Edwards

May 1991

Louisiana State University, Dept. of Anthropology &
West Geography, Baton Rouge,
LA 70803-4105

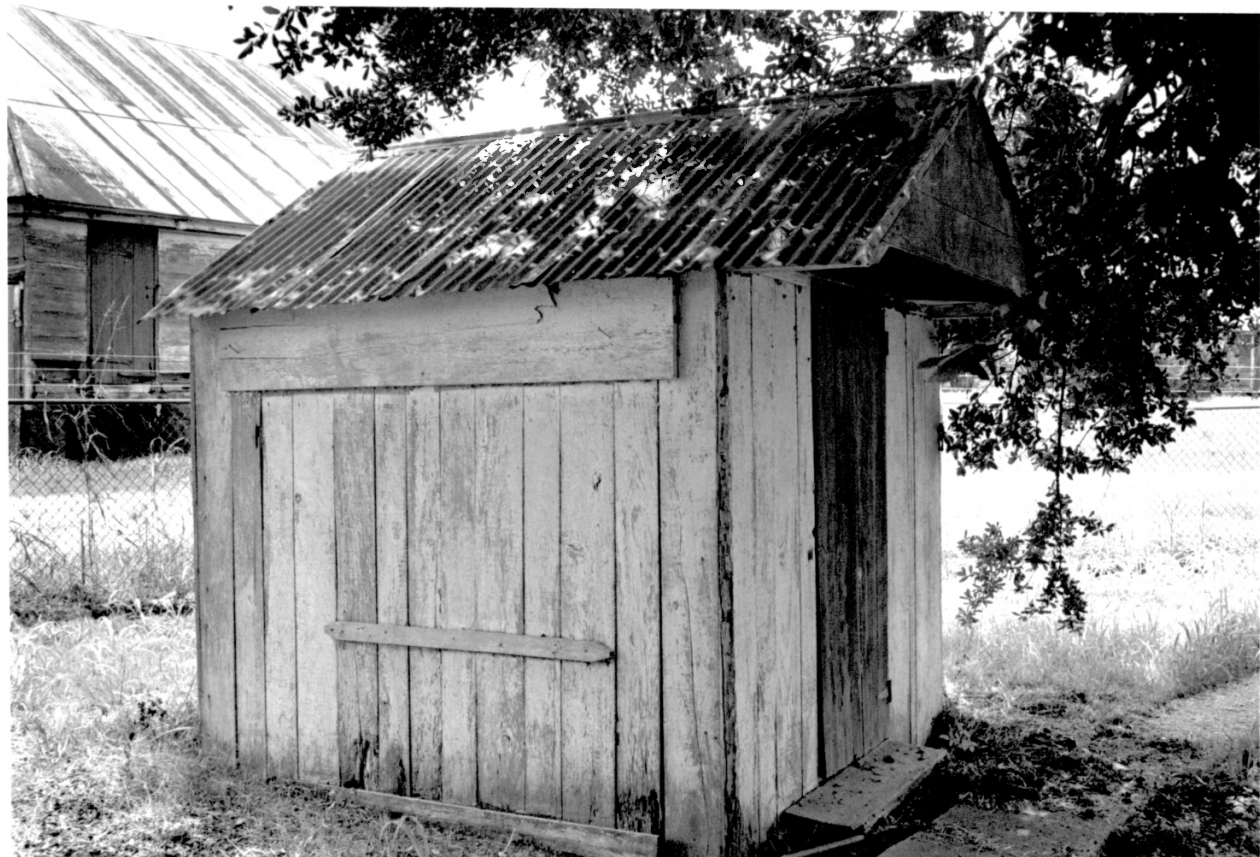
Photo No. 16

Building #1, Main House



Whitney Plantation Historic District
Wallace vicinity, St. John the Baptist Parish, LA
Jay Edwards
May 1991
Louisiana State University, Dept. of Anthropology &
Southwest Geography, Baton Rouge,
Photo No. 17 LA 20803-4105-

Building #1, Main House



Whitney Plantation Historic District

Wallace vicinity, St. John the Baptist Parish, LA

Jay Edwards

May 1991

Louisiana State University, Dept. of Anthropology
South

Photo No. 18

+ Geography, Baton
Rouge, La 70803-4105

Building #22, Gardener's Shed



Whitney Plantation Historic District
Wallace vicinity, St. John the Baptist Parish, LA
Jay Edwards

May 1991.

Louisiana State University, Dept. of Anthropology &
Southeast Geography, Baton Rouge,
Photo No. 19 LA 70803-4105

Building #15, French Creole Barn



Whitney Plantation Historic District

Wallace vicinity, St. John the Baptist Parish,

Patricia Duncan

LA

9/30/92

LASHPO

South

Photo No. 20

General View; Blds # 14 Modern Agri Shed (left)

13 Shed (middle)

12 Overseer's House (right)



Whitney Plantation Historic District

Wallace vicinity, St. John the Baptist Parish, LA

Jay Edwards

May 1991

Louisiana State University, Dept. of Anthropology &
North Geography, Baton Rouge,

Photo No. 21

LA 70803-4105

Building #1, Main House



Whitney Plantation Historic District

Wallace vicinity, St. John the Baptist Parish,

Patricia Duncan

LA

9/30/92

LASHPO

Southwest

Photo No. 22

Buildings # 7 - Early 19th Century Barn (left)

6 - Unknown Use (right)



Whitney Plantation Historic District
Wallace vicinity, St. John the Baptist Parish,
Patricia Duncan LA

9/30/92

LASHPO

Southwest

Photo No. 23

General view: Bldgs # 10 Modern Agri Shed (left)
8 Pump House / Shed (middle)
9 Modern Agri shed (right)