



1. Estate Little Princess-The Original
greathouse

2. Christiansted, St. Croix, U.S.V.I.

3. Annie Hillary

4. July 22, 1977

St. Croix Co.

5. V.I. Planning Office

P.O. Box 2606

St. Thomas, Virgin Islands 00801

6. Southwest

7. Photograph number - 1/13

AUG 15 1977

JUN 9 1980



1. Estate Little Princess --
Guest House Extension

2. Christiansted, St. Croix,
U.S.V.I.

St. Croix Co.

3. William Chapman

4. February 15, 1980

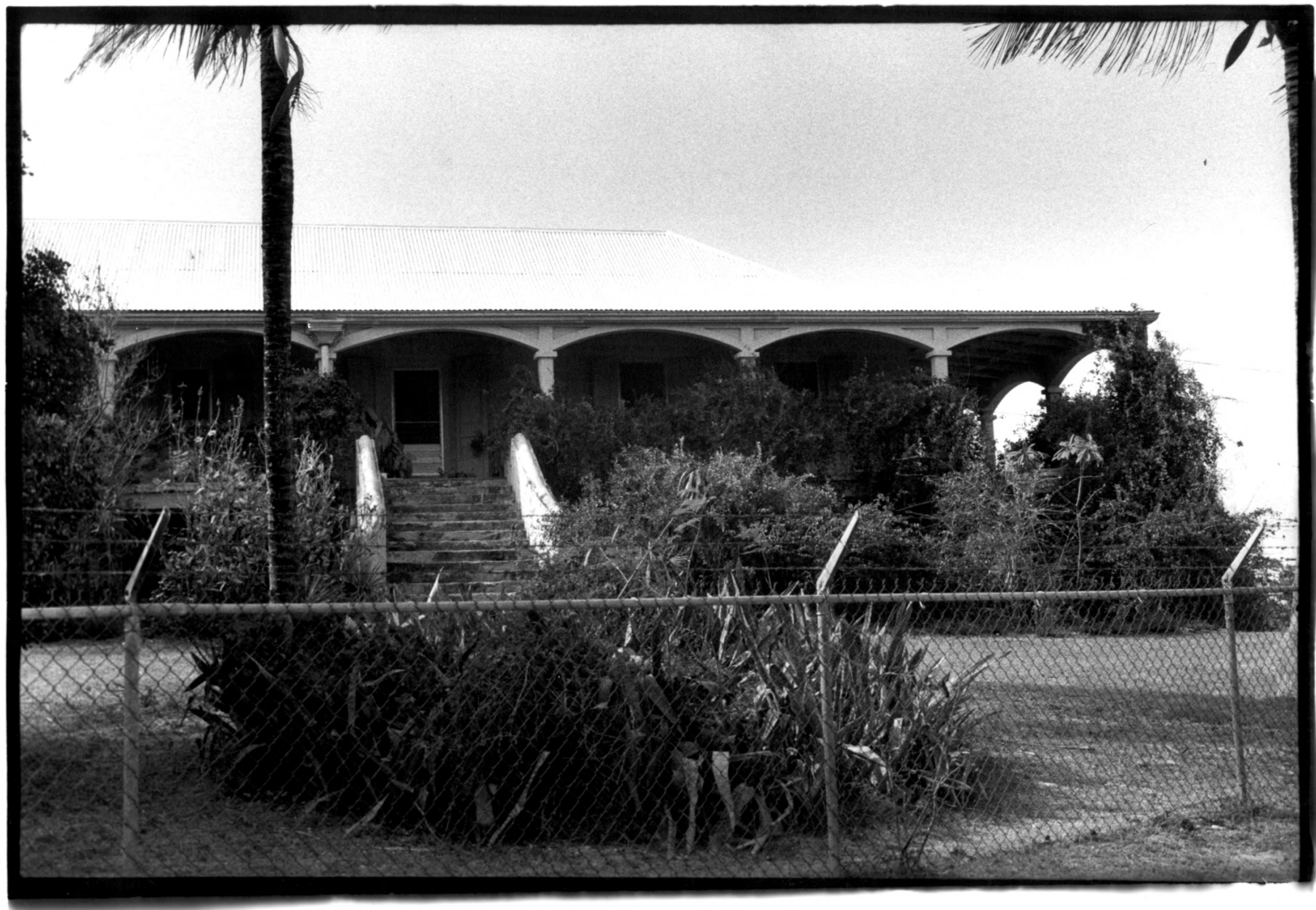
5. V.I. Planning Office
P.O. Box 2606
St. Thomas, V.I. 00801

6. From East

7. Photograph Number *2/13*

JUN 9 1980

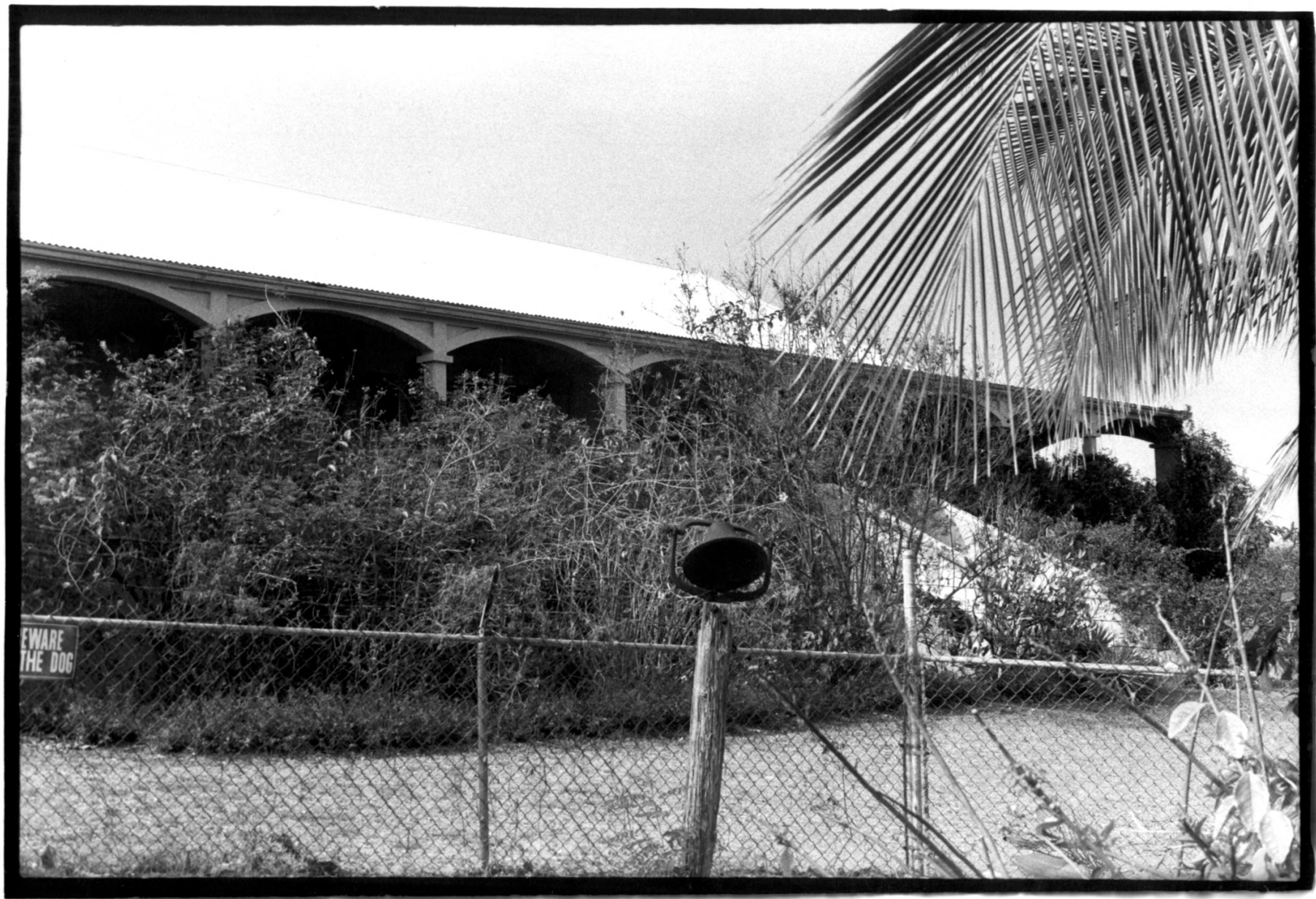
MAY 8 1980



1. Estate Little Princess-second greathouse
2. Christiansted, St. Croix, U.S.V.I.
3. Annie Hillary *county*
4. July 22, 1977
5. V.I. Planning Office
P.O. Box 2606
St. Thomas, Virgin Islands 00801
6. South
7. Photograph number - *3/13*

JUN 9 1980

AUG 15 1977



1. Estate Little Princess-second greathouse
2. Christiansted, St. Croix U.S.V.I.
3. Annie Hillary *Co.*
4. July 22, 1977
5. V.I. Planning Office
P.O. Box 2606
St. Thomas, Virgin Islands 00801
6. Southeast
7. Photograph number - *4/13*

JUN 9 1980

AUG 15 1977



1. Estate Little Princess-Cook House of second great house
2. Christiansted, St. Croix, U.S.V.I.
3. Russell Wright *co.*
4. May 3, 1977
5. V.I. Planning Office
P.O. Box 2606
St. Thomas, Virgin Islands 00801
6. Interior-kitchen
7. Photograph number - *5/13*

JUN 9 1980

AUG 15 1977

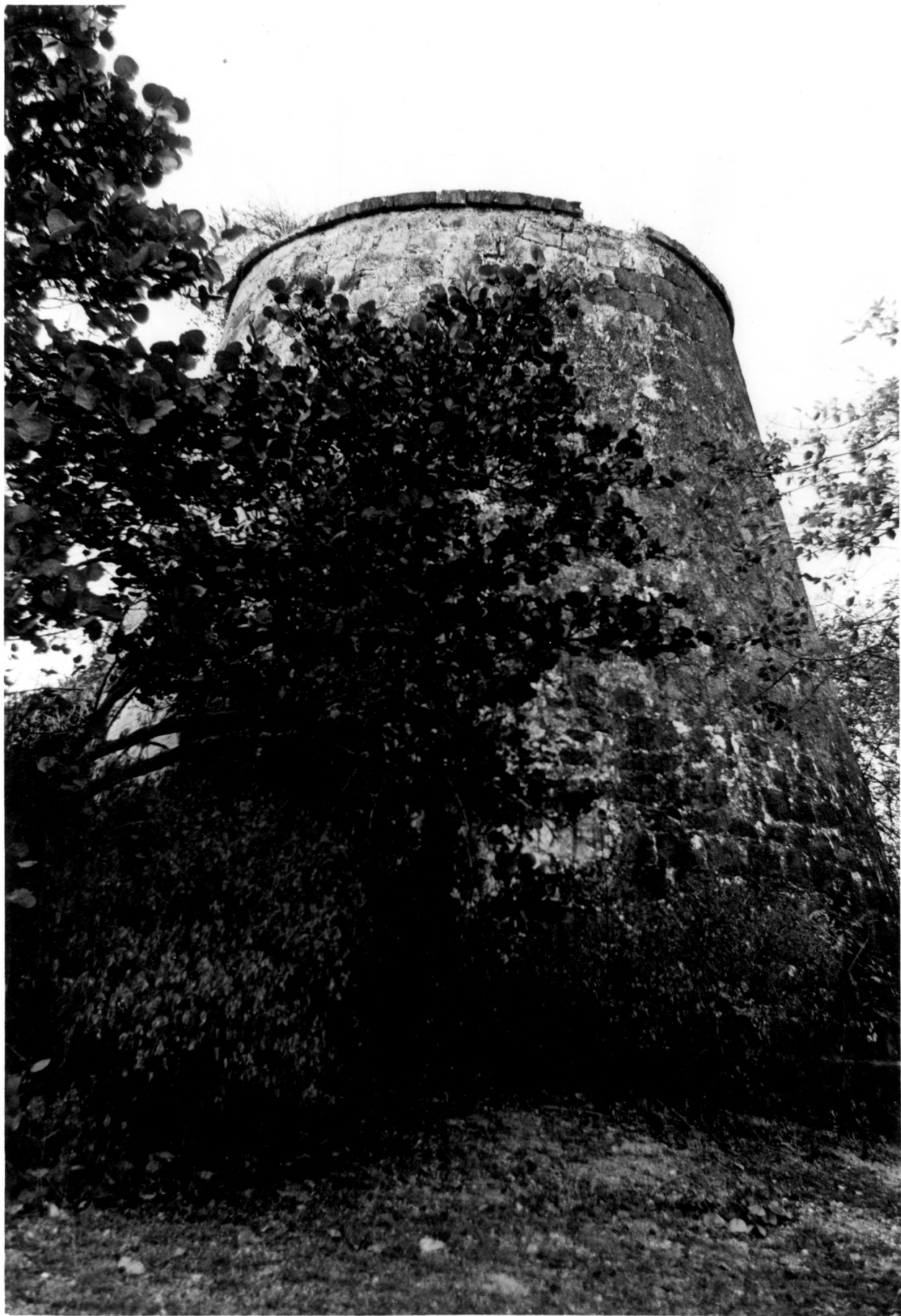


1. Estate Little Princess-Overseer's house
2. Christiansted, St. Croix, U.S.V.I.
3. Russell Wright
4. May 3, 1977
5. V.I. Planning Office
P.O. Box 2606
St. Thomas, Virgin Islands 00801
6. Northwest
7. Photograph number - 6/13

St. Croix Co.

JUN 9 1980

AUG 15 1977



1. Estate Little Princess-Sugar Mill
2. Christiansted, St. Croix, U.S.V.I.
3. Russell Wright *County*
4. May 3, 1977
5. V.I. Planning Office
P.O. Box 2606
St. Thomas, Virgin Islands 00801
6. Northwest
7. Photograph number - *7/3*

JUN 9 1980

AUG 15 1977



1. Estate Little Princess-Sugar Factory
2. Christiansted, St. Croix, U.S.V.I.
3. Russell Wright
4. May 3, 1977
5. V.I. Planning Office
P.O. Box 2606
St. Thomas, V.I. 00801
6. Southeast
7. Photograph number - 8-13

St. Croix Co.

AUG 15 1977

JUN 9 1980



1. Estate Little Princess-Chimney
2. Christiansted, St. Croix, U.S.V.I.
3. Russell Wright *County*
4. May 3, 1977
5. V.I. Planning Office
P.O. Box 2606
St. Thomas, V.I. 00801
6. Northeast
7. Photograph number - 9/13.

AUG 15 1977

JUN 9 1980



1. Estate Little Princess _
Detail Factory

2. Christiansted, St. Croix,
U.S.V.I. 00801

3. William Chapman

St. Croix.

4. February 15, 1980

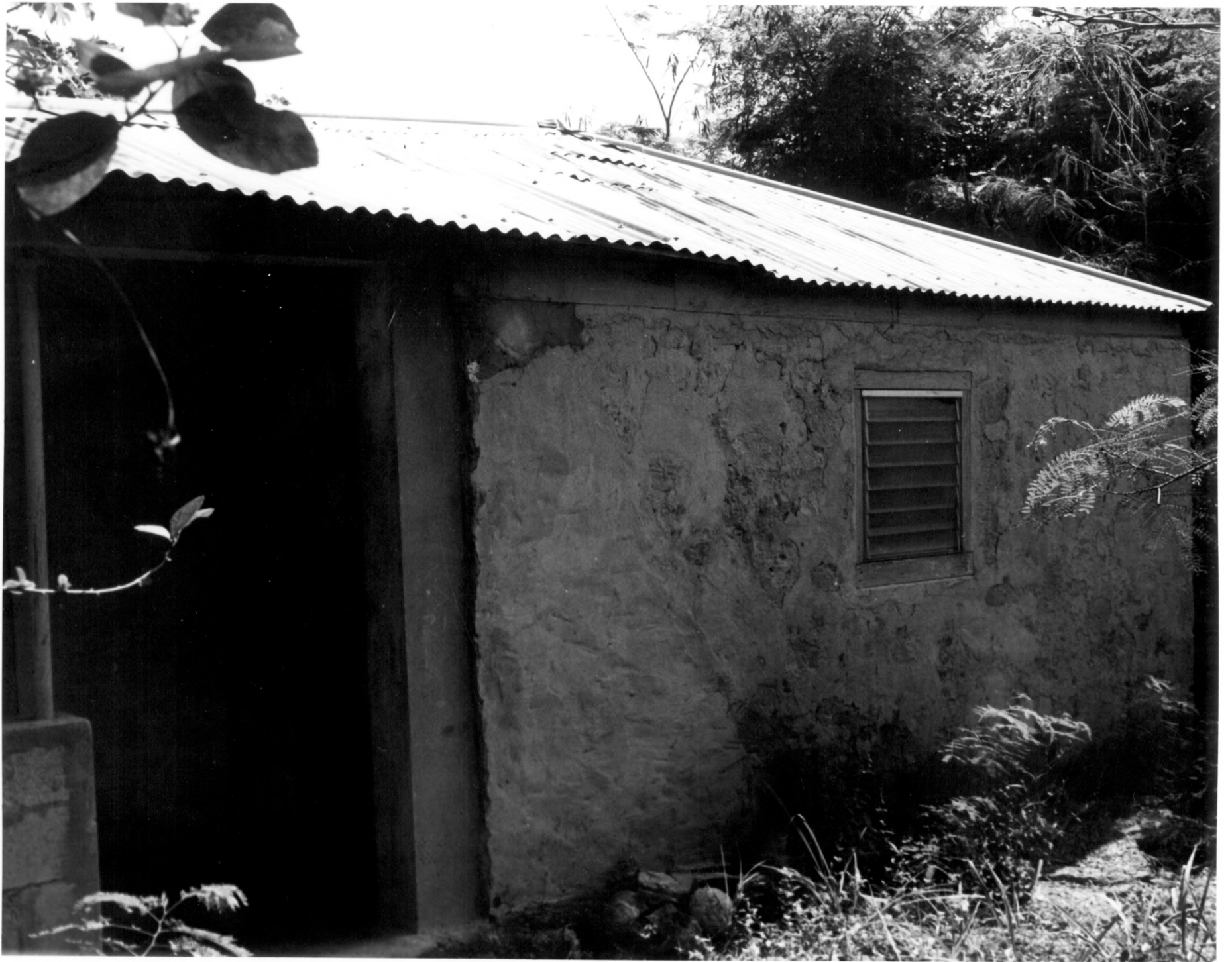
5. V.I. Planning Office
P.O. Box 2606
St. Thomas, V.I. 00801

6. From Northwest

7. Photograph Number 10/13

MAY 8 1980

JUN 9 1980



1. Estate Little Princess --
Stabilized Slave Cottage

2. Christiansted, St. Croix,
U.S.V.I. 00801

3. William Chapman

St. Croix Co.

4. February 15, 1980

5. V.I. Planning Office
P.O. Box 2606
St. Thomas, V.I. 00801

6. From West

7. Photograph Number 11/13

MAY 8 1980

JUN 9 1980



1. Estate Little Princess --
Ruins of Second Slave Cottage
2. Christiansted, St. Croix, *co.*
U.S.V.I. 00801
3. William Chapman
4. February 15, 1980
5. V.I. Planning Office
P.O. Box 2606
St. Thomas, V.I. 00801
6. From East
7. Photograph Number 12/13

MAY 8 1980

JUN 9 1980



1. Estate Little Princess --
Rear of 2nd Great House
2. Christiansted, St. Croix, *Co.*
U.S.V.I. 00801
3. William Chapman
4. February 15, 1980
5. V.I. Planning Office
P.O. Box 2606
St. Thomas, V.I. 00801
6. From Northwest
7. Photograph Number 13¹³ (additional)

MAY 8 1980

JUN 9 1980