



ST JOHNS SIGNAL TOWER GAS STATION
8302 NORTH LOMBARD ST.
PORTLAND, MULTNOMAH COUNTY, OR

PHOTOGRAPHER: ROB PHILLIPS
2010 NW ASPEN AVE
PORTLAND, OR 97210

NOVEMBER 18, 2002

NORTHWEST (FRONT) ELEVATION

PHOTOGRAPH 1 OF 15



ST JOHNS SIGNAL TOWER GAS STATION
8302 NORTH LOMBARD ST.

PORTLAND, MULTNOMAH COUNTY, OR

PHOTOGRAPHER: ROB PHILLIPS
2010 NW ASPEN AVE
PORTLAND, OR 97210

NOVEMBER 18, 2002

NORTHEAST ELEVATION

NORTH LOMBARD & CHARLESTON AVE

PHOTOGRAPH 2 OF 15



ST JOHNS SIGNAL TOWER GAS STATION
8302 NORTH LOMBARD ST.

PORTLAND, MULTNOMAH COUNTY, OR

PHOTOGRAPHER: ROB PHILLIPS

2010 NW ASPEN AVE

PORTLAND, OR 97210

NOVEMBER 18, 2002

CANOPY ELEVATION: LOOKING SOUTHEAST

PHOTOGRAPH 3 OF 15



ST JOHNS SIGNAL TOWER GAS STATION
8302 NORTH LOMBARD ST.

PORTLAND, MULTNOMAH COUNTY, OR

PHOTOGRAPHER: ROB PHILLIPS
2010 NW ASPEN AVE
PORTLAND, OR 97210

NOVEMBER 18, 2002

OFFICE & TOWER

SOUTHEAST ELEVATION

PHOTOGRAPH 4 OF 15



ST JOHNS SIGNAL TOWER GAS STATION
8302 NORTH LOMBARD ST.
PORTLAND, MULTNOMAH COUNTY, OR
PHOTOGRAPHER: ROB PHILLIPS
2010 NW ASPEN AVE
PORTLAND, OR 97210

NOVEMBER 18, 2002

OFFICE, TOWER & CANOPY
EAST ELEVATION

PHOTOGRAPH 5 OF 15



ST JOHNS SIGNAL TOWER GAS STATION
8302 NORTH LOMBARD ST.

PORTLAND, MULTNOMAH COUNTY, OR

PHOTOGRAPHER: ROB PHILLIPS
2010 NW ASPEN AVE
PORTLAND, OR 97210

NOVEMBER 18, 2002

EXTERIOR DETAIL: TOWER

PHOTOGRAPH 6 OF 15



ST JOHNS SIGNAL TOWER GAS STATION
8302 NORTH LOMBARD ST
PORTLAND, MULTNOMAH COUNTY, OR
PHOTOGRAPHER: ROB PHILLIPS

2010 NW ASPEN AVE
PORTLAND OR 97210

NOVEMBER 18, 2002

EXTERIOR DETAIL: AIR & WATER STATION

PHOTOGRAPH 7 OF 15

00-04 1000000

8302

**FOR
LEASE**
6,10 SQ. FT.
OFFICE/RETAIL
Renovation
Properties
227-3892

LOWERY
FLOWERS
RESPONDED TO
RFS IN LONDON



ST JOHN'S SIGNAL TOWER GAS STATION
8302 NORTH LOMBARD ST
PORTLAND, MULTNOMAH COUNTY, OR

PHOTOGRAPHER: ROB PHILLIPS

5>008 +00+00+00-06 000000

2010 NW ASPEN AVE
PORTLAND, OR 97210

NOVEMBER 18, 2002

NORTHEAST ELEVATION: LUBRICATION Bay

PHOTOGRAPH 8 OF 15



ST JOHNS SIGNAL TOWER GAS STATION
8302 NORTH LOMBARD ST.

PORTLAND, MULTNOMAH COUNTY, OR

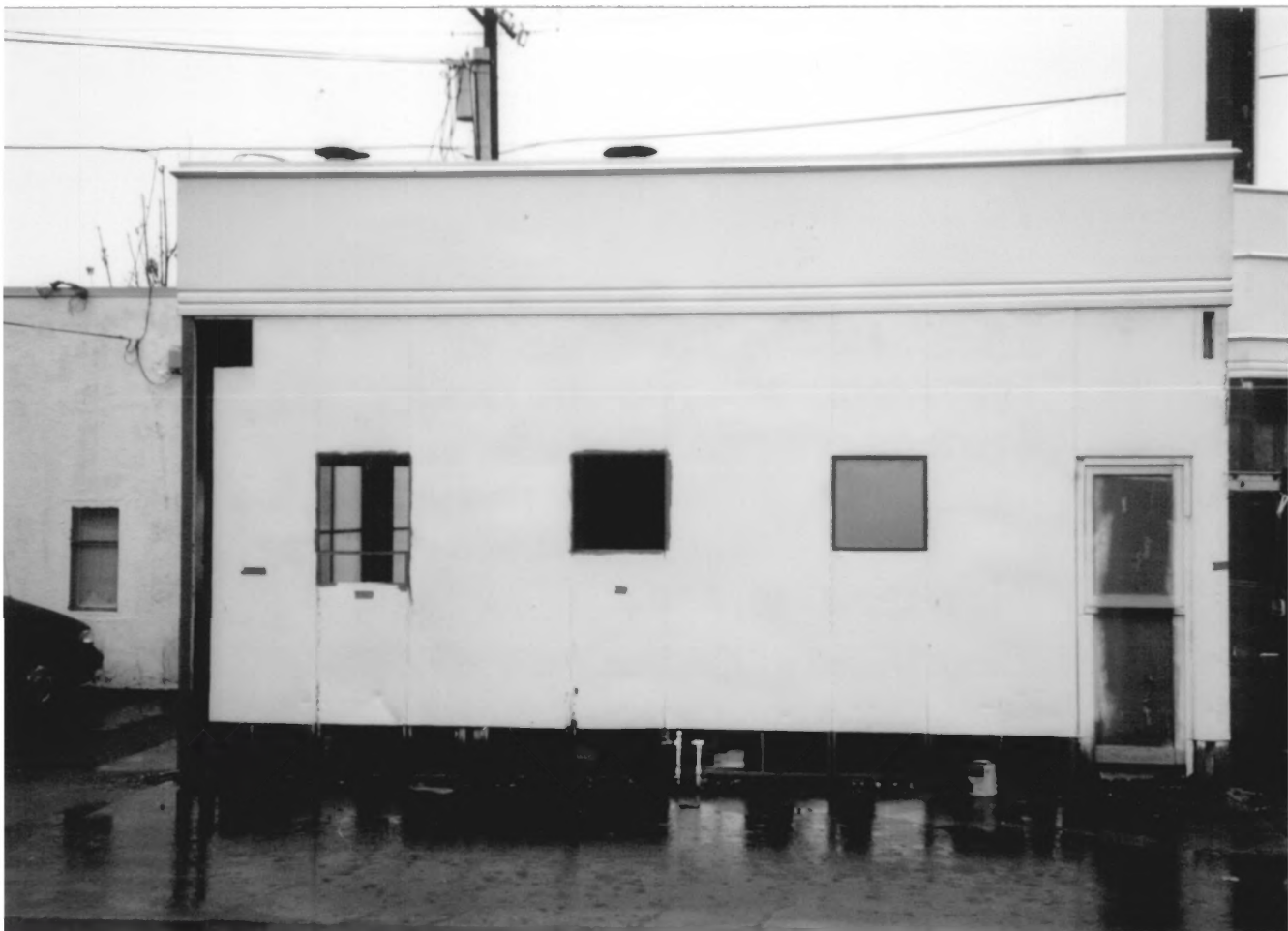
PHOTOGRAPHER: ROB PHILLIPS

2010 NW ASPEN AVE
PORTLAND, OR 97210

NOVEMBER 18, 2002

NORTHWEST ELEVATION

PHOTOGRAPH 9 OF 15



ST JOHNS SIGNAL TOWER GAS STATION
8302 NORTH LOMBARD ST.

PORTLAND, MULTNOMAH COUNTY, OR

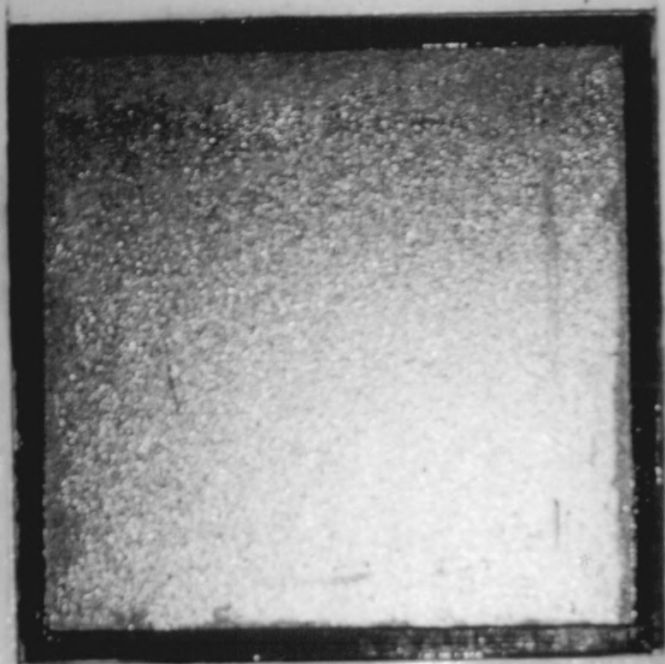
PHOTOGRAPHER: ROB PHILLIPS

2010 NW ASPEN AVE
PORTLAND, OR 97210

NOVEMBER 18, 2002

SOUTHWEST (REAR) ELEVATION

PHOTOGRAPH 10 OF 15



ST JOHNS SIGNAL TOWER GAS STATION
8302 NORTH LOMBARD ST.
PORTLAND, MULTNOMAH COUNTY, OR

PHOTOGRAPHER: ROB PHILLIPS
2010 NW ASPEN AVE
PORTLAND OR 97210

NOVEMBER 18, 2002

EXTERIOR DETAIL: WALL
WINDOW & SHEET METAL PANELS

PHOTOGRAPH 11 OF 15



PENINSULA STATION

- COPY & PRINTING SERVICES
- MAILBOXES
- AUTOMATED UPS SHIPPER

PARKING
ONLY and
NO PARKING

ST JOHN'S SIGNAL TOWER GAS STATION
8302 NORTH LOMBARD ST.
PORTLAND, MULTNOMAH COUNTY, OR

2>005 +00+00+00-08 000000

PHOTOGRAPHER: ROB PHILLIPS
2010 NW ASPEN AVE
PORTLAND, OR 97210

NOVEMBER 18, 2002

INTERIOR: NORTHEAST ELEVATION
PHOTOGRAPH 12 OF 15



ST JOHNS SIGNAL TOWER GAS STATION
8302 NORTH LOMBARD ST
PORTLAND, MULTNOMAH COUNTY OR

PHOTOGRAPHER: ROB PHILLIPS

1>002 +00+00+00-07 000000
2010 NW ASPEN AVE
PORTLAND, OR 97210

NOVEMBER 18, 2002

INTERIOR: NORTHWEST ELEVATION

PHOTOGRAPH 13 OF 15



ST JOHNS SIGNAL TOWER GAS STATION
8302 NORTH LOMBARD ST.

PORTLAND, MULTNOMAH COUNTY, OR

PHOTOGRAPHER: ROB PHILLIPS
2010 NW ASPEN AVE
PORTLAND, OR 97210

NOVEMBER 18, 2002

INTERIOR DETAIL: LUBE BAY CEILING
GIRDER TRUSS
GARAGE DOOR

PHOTOGRAPH 14 OF 15



ST JOHNS SIGNAL TOWER GAS STATION
8302 NORTH LOMBARD ST.

PORTLAND, MULTNOMAH COUNTY, OR

PHOTOGRAPHER: ROB PHILIPS
2010 NW ASPEN AVE
PORTLAND OR 97210

NOVEMBER 18, 2002

INTERIOR DETAIL: OFFICE CEILING
ROOF DRAIN

PHOTOGRAPH 15 OF 15