



Photo 1 - Aerial view of main Guard Island, Standing
1923-24 light and fog signal building and
general topography looking northwest

Guard Island Light Station
Tongass narrows north of Ketchikan, Alaska
Ketchikan Gateway Borough
Robert M. Weaver, Photographer
October 23, 2002

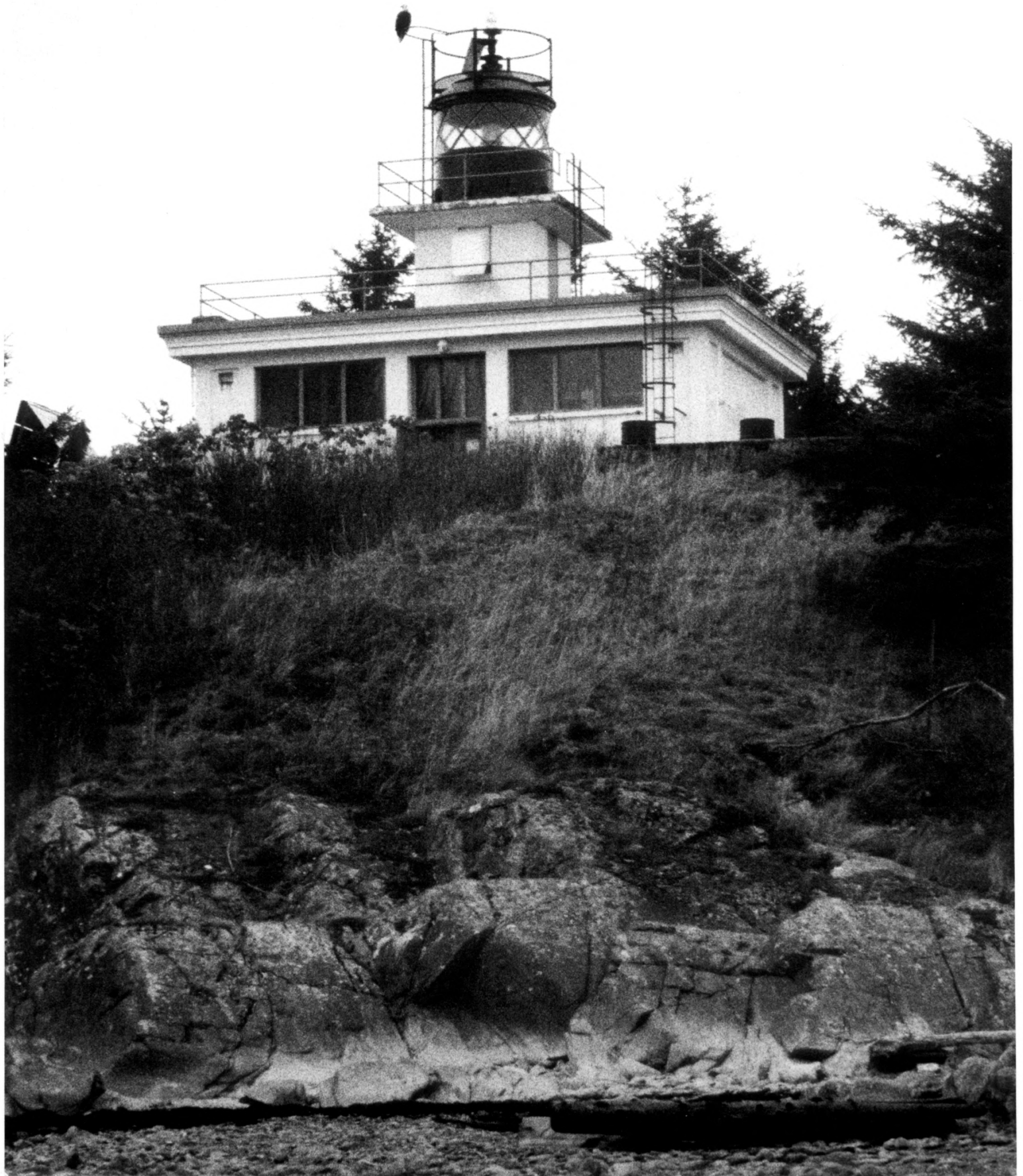


Photo 2 - Facade (East elevation) of 1923-24 light
and fog signal building looking west from
tidal zone.

Guard Island Light Station

Tongass Narrows north of Ketchikan, Alaska

Ketchikan Gateway Borough

Robert M. Weaver, Photographer

October 23, 2002

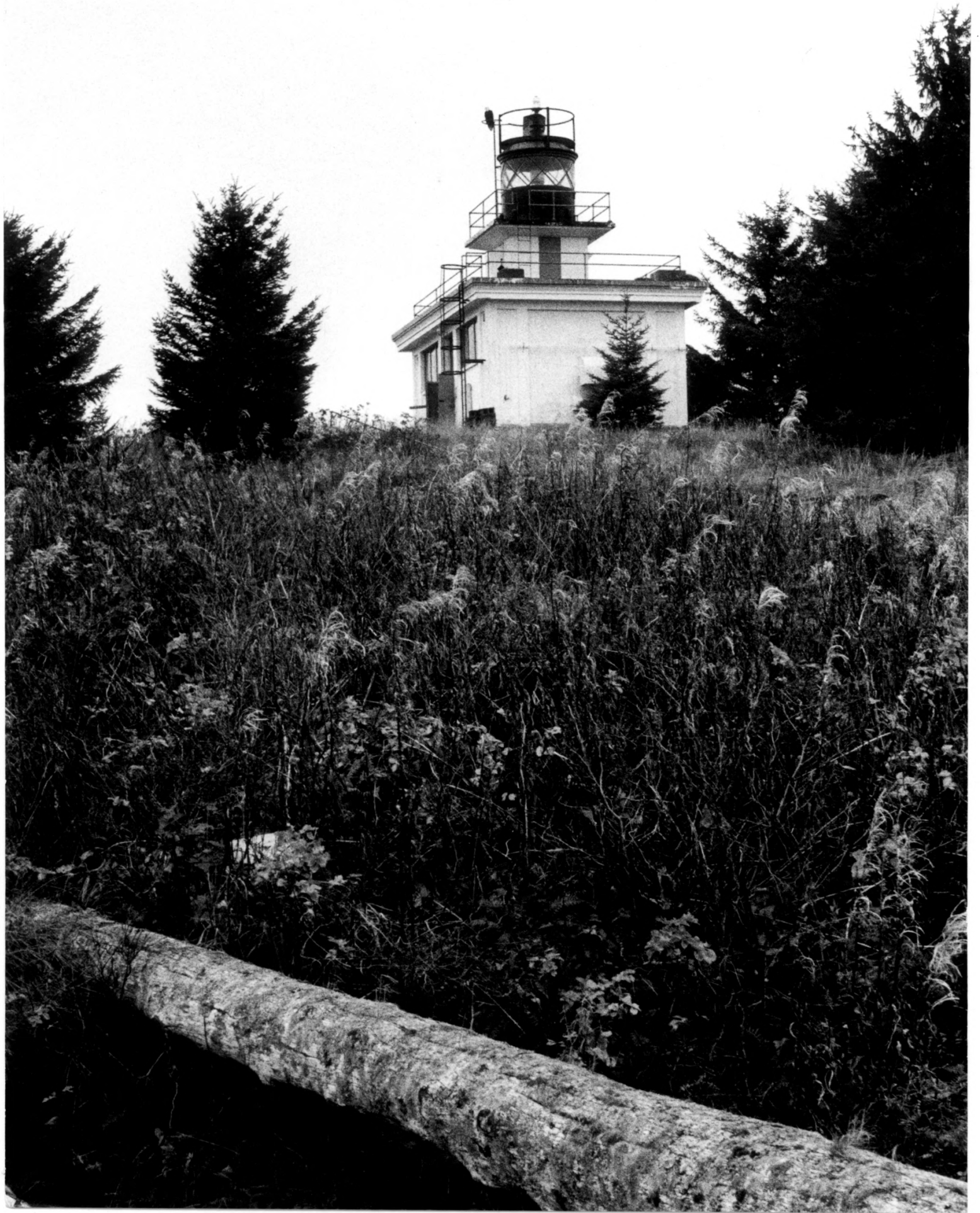


Photo 3 - North and east elevations of 1923-24
light and fog signal building looking
south southwest from residential
Compound area.

Guard Island Light Station
Tongass Narrows north of Ketchikan, Alaska
Ketchikan Gateway Borough
Robert M. Weaver, Photographer
October 23, 2002



Photo 4 - Remaining (archaeological) features of light Station including house foundations (left and right foreground), hoist/boathouse foundation with winch block; tram car house foundation (center); cistern ruins (right center) and visible portion of station walkway. Looking north from lighthouse gallery.

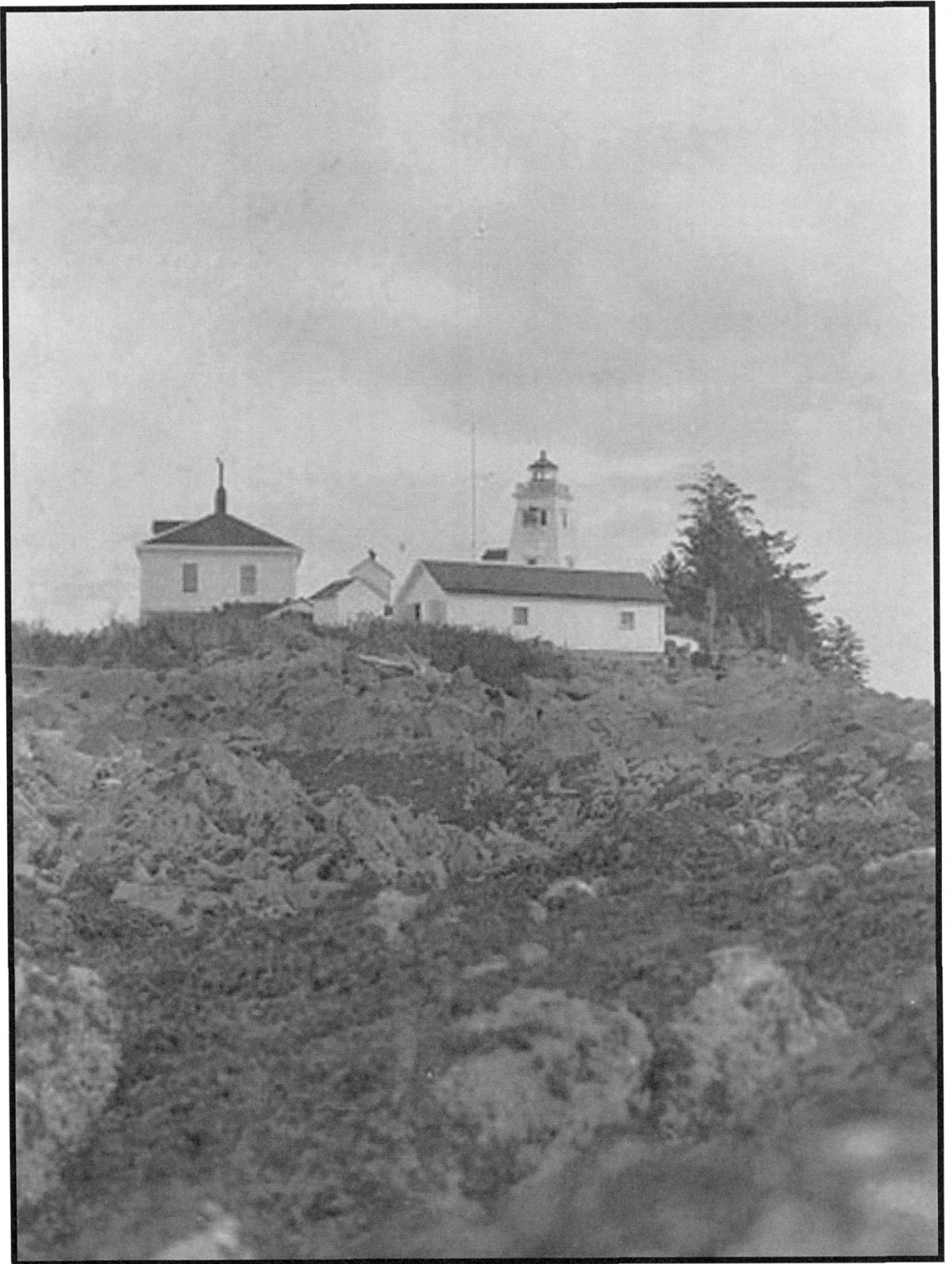
Guard Island Light Station

Tongass Narrows north of Ketchikan, Alaska

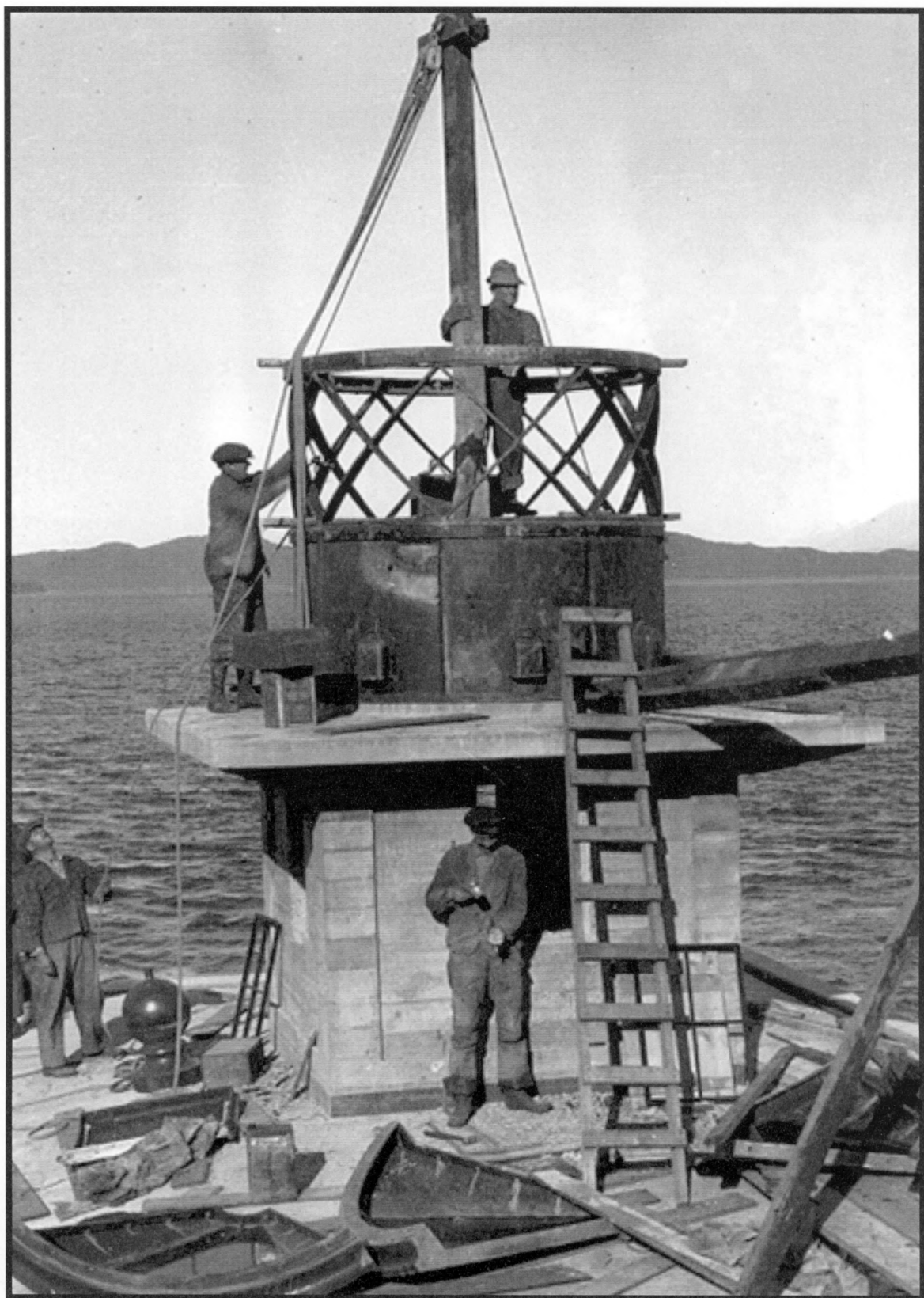
Ketchikan Gateway Borough

Robert M. Weaver, Photographer

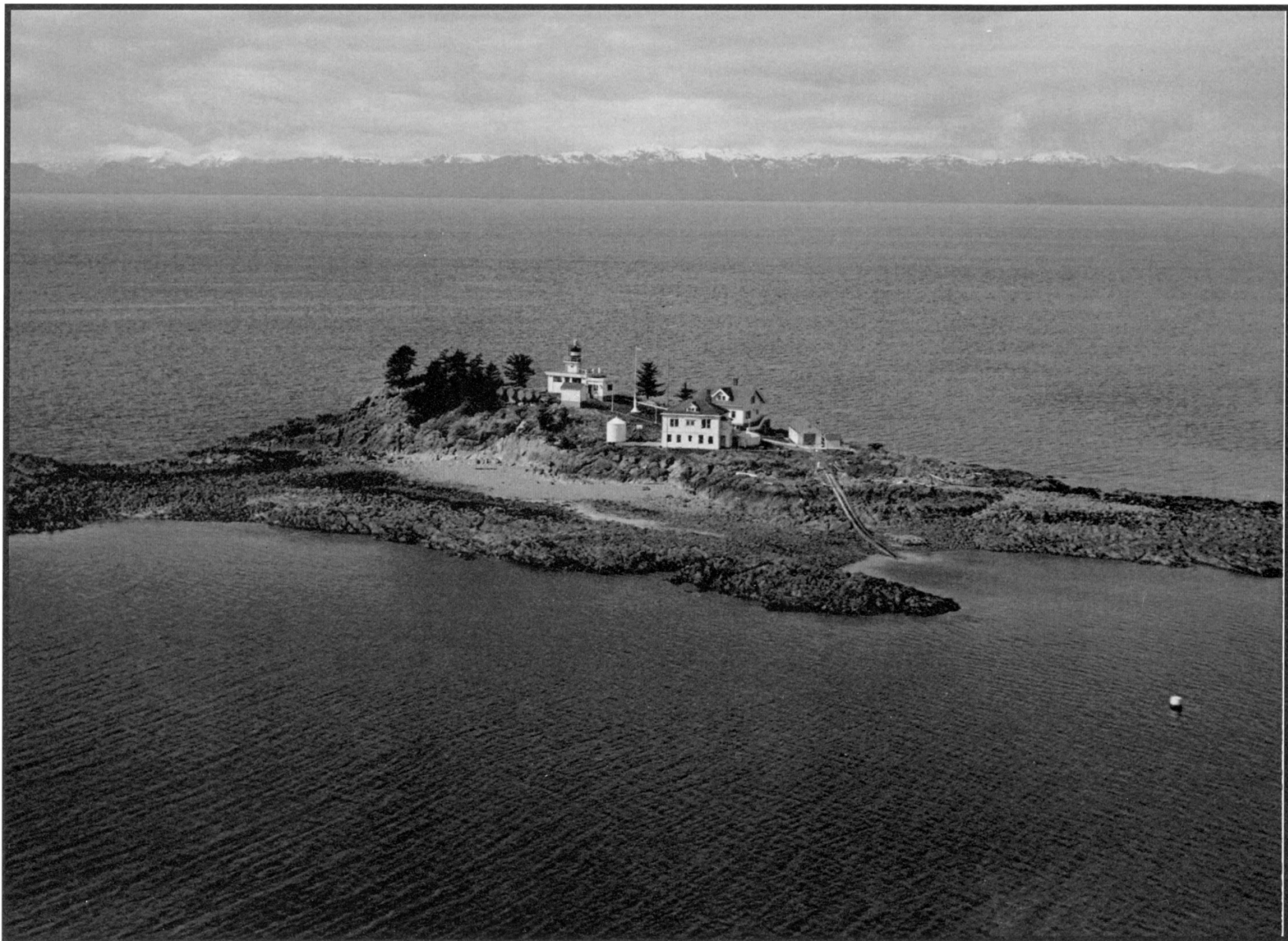
October 23, 2002



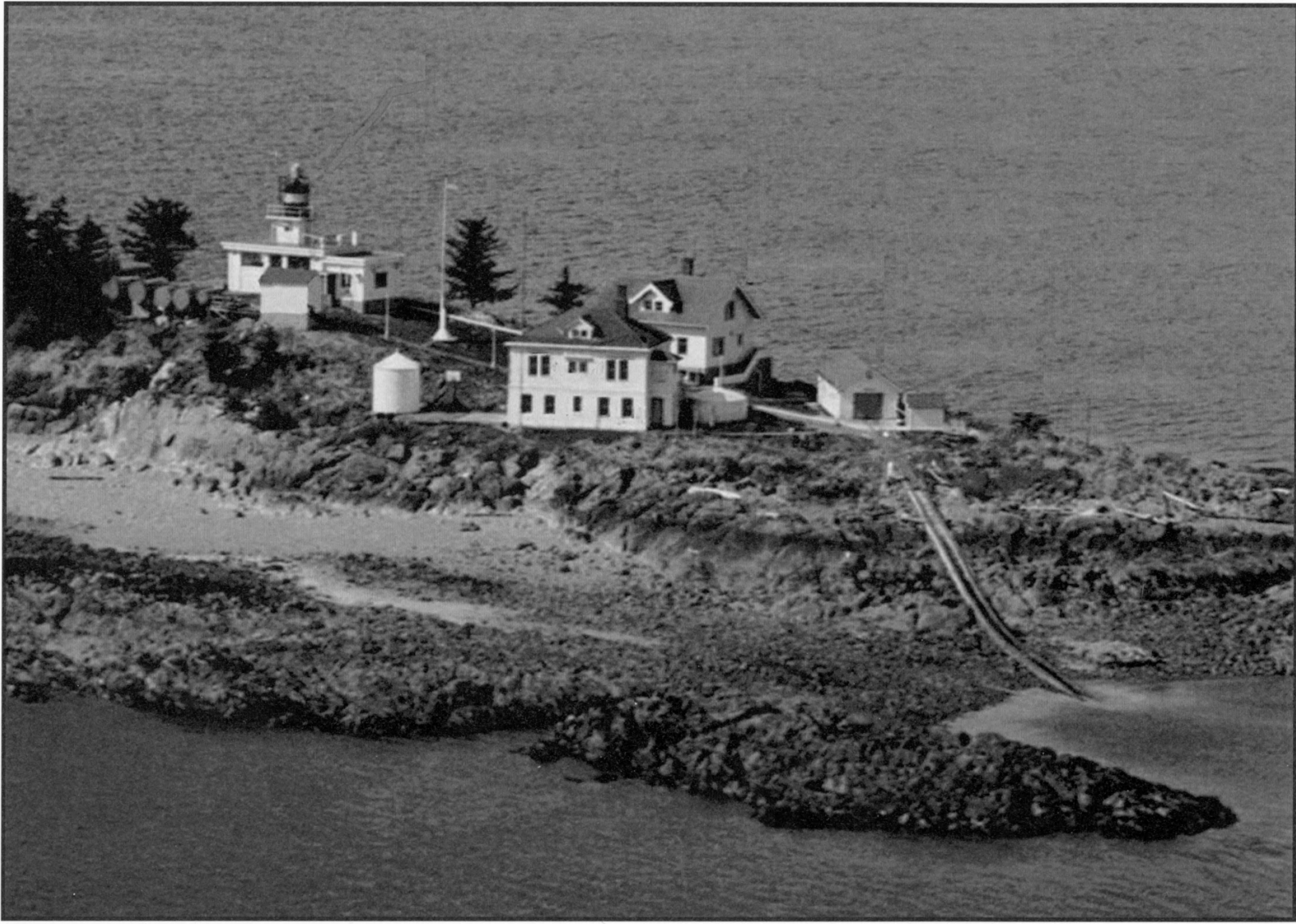
Guard Island Light Station shortly after construction in 1904



Guard Island Light Station lantern under construction in 1924

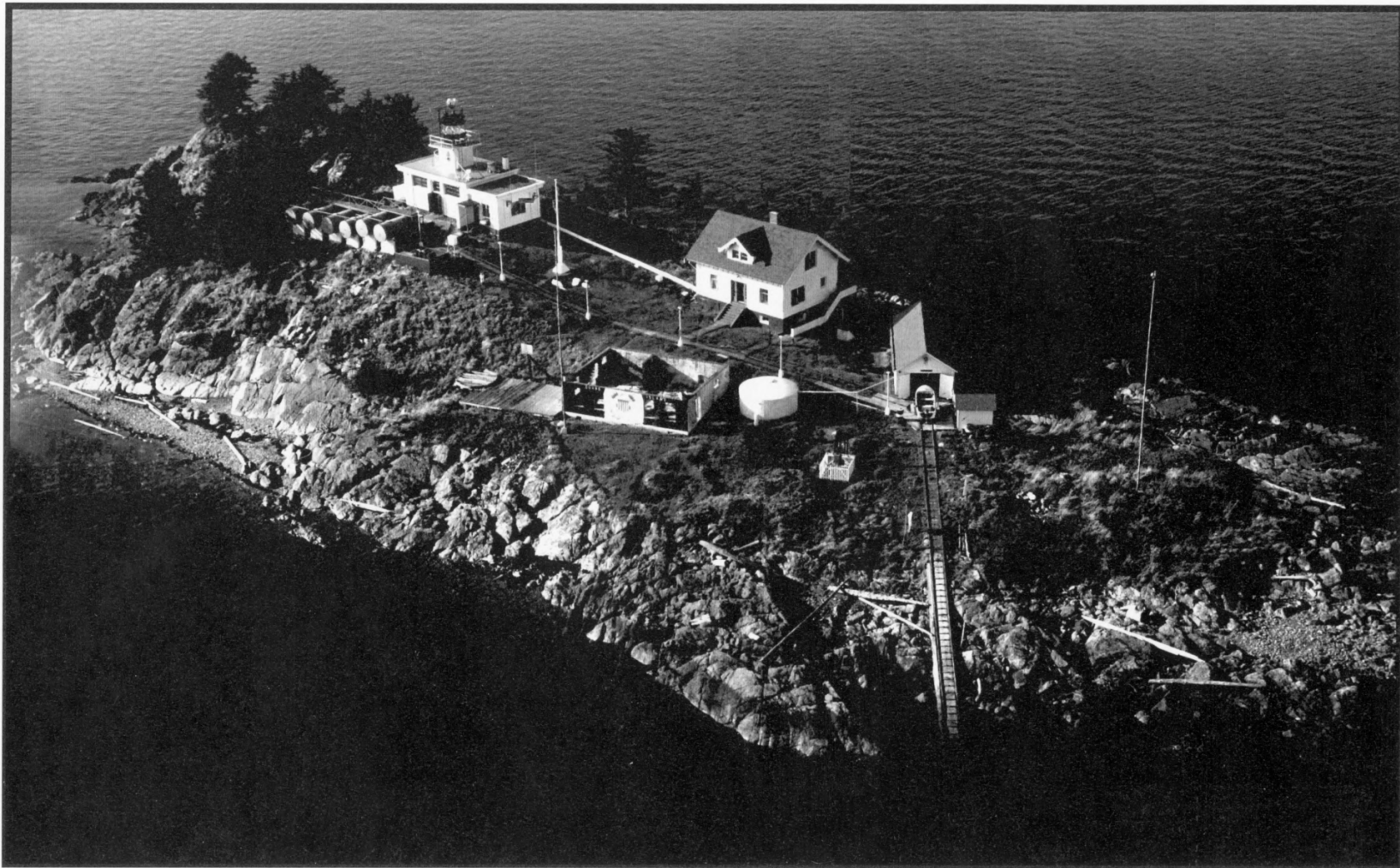


Guard Island and Light Station in 1961.
Source: USCG CEU Juneau

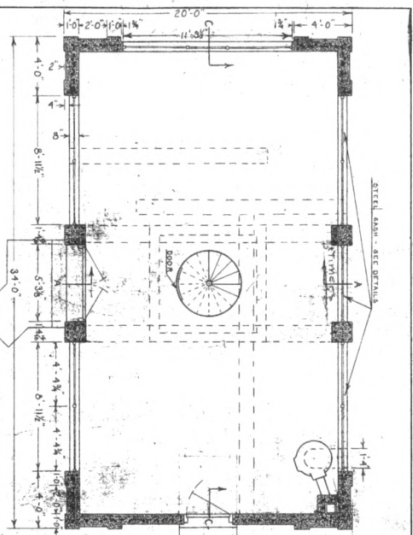


Guard Island Light Station in 1961.

Source: USCG CEU Juneau



Guard Island Light Station ca. 1965 after demolition of original keeper's house
Source: USCG CEU Juneau

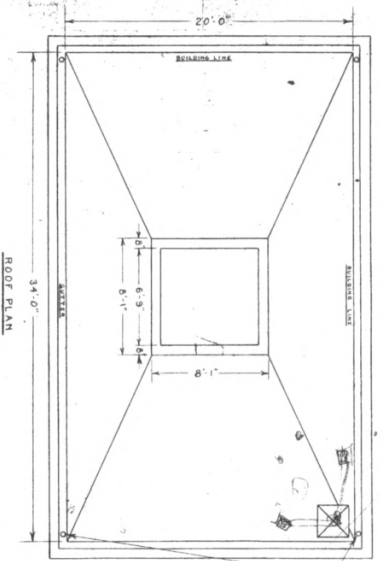
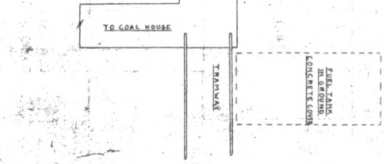


FLOOR PLAN

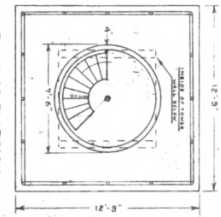
NOTE
 ALL REINFORCEMENT SHALL BE SPACED AS SHOWN UNLESS OTHERWISE SPECIFIED.
 ALL WALLS TO BE TYPED BRICKWORK CONSTRUCTED AT LEAST THREE FEET
 THICK WITH CORNER REINFORCEMENT AS SHOWN IN DETAIL.
 ALL ROOFING SHALL BE AS SHOWN IN DETAIL.

REINFORCEMENT NOTES

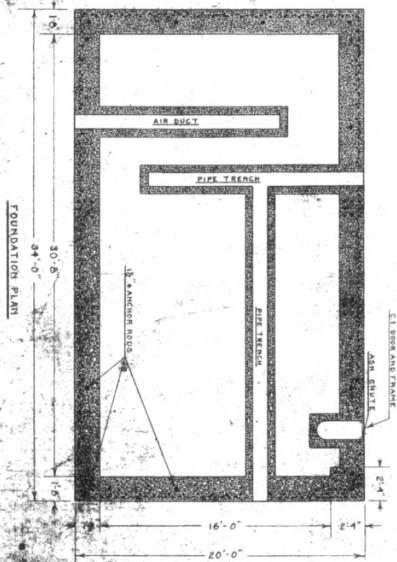
ALL REINFORCEMENT SHALL BE SPACED 10" - 4" EACH WAY.
 ALL WALLS TO BE TYPED BRICKWORK CONSTRUCTED AT LEAST THREE FEET
 THICK WITH CORNER REINFORCEMENT AS SHOWN IN DETAIL.
 ALL ROOFING SHALL BE AS SHOWN IN DETAIL.



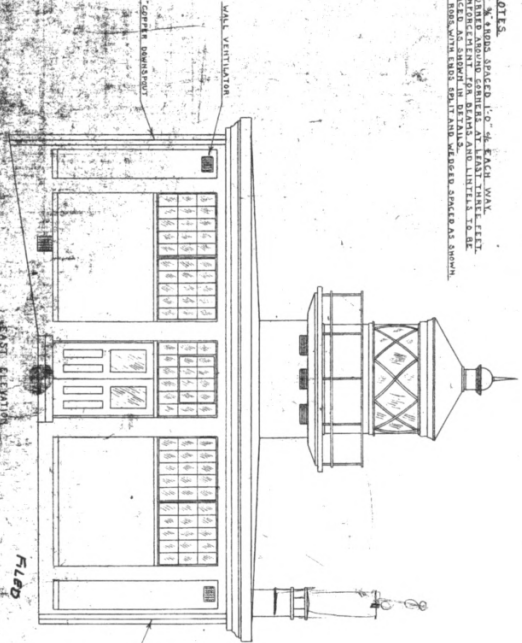
ROOF PLAN



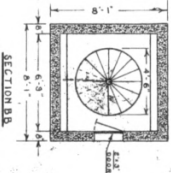
PLAN OF PLATFORM



FOUNDATION PLAN



EAST ELEVATION



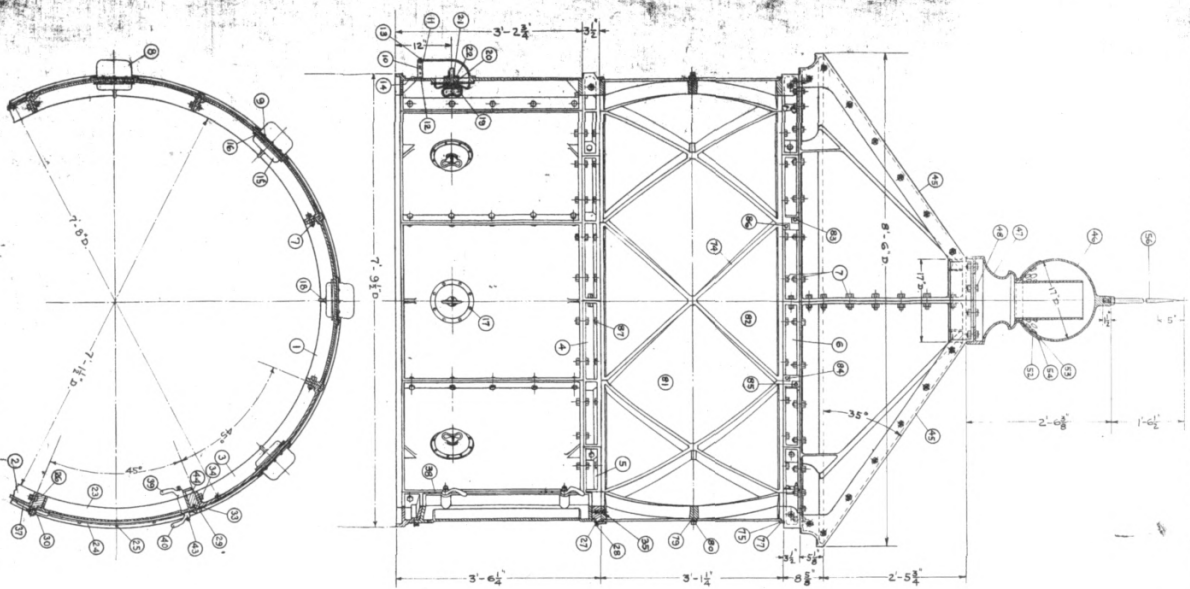
SECTION BB

GUARD ISLAND LIGHT STATION
 PLAN AND FRONT ELEVATION

FILED
 20 JUN 1936

36-2201

Handwritten signatures and dates: *W. H. ...* 11/10, *W. H. ...* 9/17/36



ITEM NO.	QUANTITY	DESCRIPTION	MATERIAL	REMARKS
554-2	1	5 PATTERN PLATE	CAST IRON	
	2	1 HODDED PATTERN PLATE	"	
	3	1	"	
	4	6 45° PATTERN CAP	"	
	5	2 20° SPIT PLATE	"	
	6	7 1/4 1/2 BOLT & NUT	STEEL	
	7	1 3/4 1/2 BOLT & NUT	STEEL	
	8	7 AIR REGISTER HOOD	COMP	
	9	63 1/4 24 MACH SCREW	BRASS	
	10	1 1/2 1/2 1/2 SCREW	STEEL	
	11	7 SCREEN ATTACH STIPPL	"	
	12	7	"	
	13	40 1/2 STOVE BOLTS	"	
	14	2 1/2 1/2 1/2 SCREW	COMP	
	15	2 1/2 1/2 1/2 SCREW	"	
	16	7 VALVE SEAT	BRASS	
	17	224 1/4 1/4 MACH SCREW	COMP	
	18	7 VALVE HANDLE	STEEL	
	19	7 WASHER PIN	STEEL	
	20	7 1/2 1/2 1/2 SCREW	CAST IRON	
	21	7 HANDLE BUSHING	STEEL	
	22	28 1/4 1/4 MACH SCREW	CAST IRON	
	23	1 DOOR PIP HOLDING	CAST IRON	
	24	1 DOOR FRAME	BRASS	
	25	1 1/4 1/4 MACH SCREW	CAST IRON	
	26	1 1/4 1/4 MACH SCREW	BRASS	
	27	1 1/4 1/4 MACH SCREW	BRASS	
	28	1 DOOR FRAME BUSHING	BRASS	
	29	1 DOOR FRAME BUSHING	BRASS	
	30	1	"	
	31	1	"	
	32	2 GASKET	RUBBER	
	33	6 1/2 STOVE BOLTS	STEEL	
	34	4 1/2 SCREW	"	
	35	2 HANDLE TAP	COMP	
	36	2 HANDLE TAP	COMP	
	37	36 1/4 MACH SCREW	BRASS	
	38	2 1/2 1/2 1/2 SCREW	COMP	
	39	2 1/2 1/2 1/2 SCREW	COMP	
	40	2 OUTSIDE SHAF	STEEL	
	41	2 HANDLE BUSHING	STEEL	
	42	2 HANDLE BUSHING	BRASS	
	43	4 LOCK NUT	COMP	
	44	2 STRING PLATE	CAST IRON	
	45	4 LANTERN ROOF CASTING	CAST IRON	
	46	1 LANTERN ROOF CASTING	CAST IRON	
	47	1 LANTERN ROOF CASTING	CAST IRON	
	48	6 1/2 BOLT & NUT	STEEL	
	49	2 WIRE SCREEN	STEEL	
	50	6 1/2 1/2 1/2 SCREW	BRASS	
	51	6 1/2 1/2 1/2 SCREW	BRASS	
	52	6 1/2 1/2 1/2 SCREW	BRASS	
	53	6 1/2 1/2 1/2 SCREW	BRASS	
	54	1 LIGHTNING ROD	STEEL	
	55	1 LIGHTNING ROD	STEEL	
	56	1 LIGHTNING ROD	STEEL	
	57	1 LIGHTNING ROD	STEEL	
	58	1 LIGHTNING ROD	STEEL	
	59	1 LIGHTNING ROD	STEEL	
	60	1 LIGHTNING ROD	STEEL	
	61	1 LIGHTNING ROD	STEEL	
	62	1 LIGHTNING ROD	STEEL	
	63	1 LIGHTNING ROD	STEEL	
	64	1 LIGHTNING ROD	STEEL	
	65	1 LIGHTNING ROD	STEEL	
	66	1 LIGHTNING ROD	STEEL	
	67	1 LIGHTNING ROD	STEEL	
	68	1 LIGHTNING ROD	STEEL	
	69	1 LIGHTNING ROD	STEEL	
	70	1 LIGHTNING ROD	STEEL	
	71	1 LIGHTNING ROD	STEEL	
	72	1 LIGHTNING ROD	STEEL	
	73	1 LIGHTNING ROD	STEEL	
	74	1 LIGHTNING ROD	STEEL	
	75	1 LIGHTNING ROD	STEEL	
	76	1 LIGHTNING ROD	STEEL	
	77	1 LIGHTNING ROD	STEEL	
	78	1 LIGHTNING ROD	STEEL	
	79	1 LIGHTNING ROD	STEEL	
	80	1 LIGHTNING ROD	STEEL	
	81	1 LIGHTNING ROD	STEEL	
	82	1 LIGHTNING ROD	STEEL	
	83	1 LIGHTNING ROD	STEEL	
	84	1 LIGHTNING ROD	STEEL	
	85	1 LIGHTNING ROD	STEEL	
	86	1 LIGHTNING ROD	STEEL	
	87	1 LIGHTNING ROD	STEEL	
	88	1 LIGHTNING ROD	STEEL	

DESIGNED FOR POINT RETREAT AND GUARD ISLAND LIGHT STATIONS, ALASKA.

DESIGNED BY THE SUPERINTENDENT OF LIGHTHOUSES 1700 DISTRICT TOWNSVILLE, N. Y.

4TH ORDER LANTERN
FOUR PIECE ROOF

SCALE: 1"=1 FT.-0 IN.

APPROVED: *[Signature]* 1924
 ASST. SUPERINTENDENT
 DRAWN: *[Signature]*
 TRACED: *[Signature]*

SUPERINTENDENT SHEET 1 OF 2
6617