

United States Department of the Interior  
National Park Service

11000017

# National Register of Historic Places Registration Form

This form is for use in nominating or requesting determinations for individual properties and districts. See instructions in National Register Bulletin, *How to Complete the National Register of Historic Places Registration Form*. If any item does not apply to the property being documented, enter "N/A" for "not applicable." For functions, architectural classification, materials, and areas of significance, enter only categories and subcategories from the instructions. Place additional certification comments, entries, and narrative items on continuation sheets (NPS Form 10-900a).

### 1. Name of Property

Historic name Bearcreek Cemetery  
Other names/site number 24CB1250

### 2. Location

street & number One Mile West of Bearcreek  not for publication  
city of town Bearcreek  vicinity  
State Montana code MT county Carbon code 009 zip code 59007

### 3. State/Federal Agency Certification

As the designated authority under the National Historic Preservation Act, as amended,  
I hereby certify that this  nomination  request for determination of eligibility meets the documentation standards for registering properties in the National Register of Historic Places and meets the procedural and professional requirements set forth in 36 CFR Part 60.  
In my opinion, the property  meets  does not meet the National Register Criteria. I recommend that this property be considered significant at the following level(s) of significance:

national  statewide  local

[Signature]  
Signature of certifying official  
STATE HISTORIC PRESERVATION OFFICER  
Title

11/29/2010  
Date  
MONTANA SHPO  
State or Federal agency and bureau

In my opinion, the property  meets  does not meet the National Register criteria.

Signature of commenting official \_\_\_\_\_ Date \_\_\_\_\_  
Title \_\_\_\_\_ State or Federal agency and bureau \_\_\_\_\_

### 4. National Park Service Certification

I, hereby, certify that this property is:

- entered in the National Register
- determined eligible for the National Register
- determined not eligible for the National Register
- removed from the National Register
- other (explain:)

[Signature]  
Signature of the Keeper  
Edson H. Beall  
Date of Action 1-18-11

Bearcreek Cemetery  
 Name of Property

Carbon County, Montana  
 County and State

**5. Classification**

**Ownership of Property**  
 (Check as many boxes as apply)

- Private
- public - Local
- public - State
- public - Federal
- Private

**Category of Property**  
 (Check only one box)

- building(s)
- district
- site
- structure
- building(s)
- object

**Number of Resources within Property**  
 (Do not include previously listed resources in the count.)

Contributing	Noncontributing	
		buildings
1		sites
	1	structures
3		Objects
		buildings
4	1	<b>Total</b>

**Name of related multiple property listing**  
 (Enter "N/A" if property is not part of a multiple property listing)

N/A

**Number of contributing resources previously listed in the National Register**

**6. Function or Use**

**Historic Functions**  
 (Enter categories from instructions)

FUNERARY/Cemetery

**Current Functions**  
 (Enter categories from instructions)

FUNERARY/Cemetery

**7. Description**

**Architectural Classification**  
 (Enter categories from instructions)

OTHER – Cemetery

**Materials**  
 (Enter categories from instructions)

foundation: \_\_\_\_\_

walls: \_\_\_\_\_

roof: \_\_\_\_\_

other: STONE, WOOD, CONCRETE, METAL

Bearcreek Cemetery

Name of Property

Carbon County, Montana

County and State

---

### **Narrative Description**

(Describe the historic and current physical appearance of the property. Explain contributing and noncontributing resources if necessary. Begin with a **summary paragraph** that briefly describes the general characteristics of the property, such as its location, setting, size, and significant features.)

#### **Summary Paragraph**

Established in 1909, the Bearcreek Cemetery overlooks the Bear Creek Valley to the north. The cemetery is located on a hillside east of the community of Bearcreek. Bear Creek, which empties into the Clarks Fork River 10 miles to the east, flows west to east 1/10 of a mile north of the cemetery. The four-acre cemetery currently contains the burials of 473 people. Three hundred seventeen of the graves are marked and the rest are unmarked. Markings range from simple steel stakes with labels to more ornately carved headstones. Many headstones exhibit Cyrillic lettering and include cameo photographs of the deceased. There is only one example of funerary statuary in the cemetery (Feature 4). It marks the burial plot of a prominent Bearcreek family. There are also graves of 22 of the 75 men killed in the 1943 Smith Mine Disaster, Montana's worst underground coal mining disaster. The Bearcreek Cemetery was not utilized as a designed landscape, but, instead, is plain and utilitarian as befitting the working class families it served. Many of the headstones can be tied directly to the area's many different ethnic groups and are representative of the times the stones were produced. The setting of the cemetery has not changed significantly since 1909.

---

### **Narrative Description**

About sixty million years ago, the Bear Creek area was part of a vast subtropical coastal plain with rivers flowing eastward into an inland seaway. Between these major river systems great thicknesses of plant material accumulated that was converted to peat and eventually buried under sand, mud, and other sediments. Over millions of years, the increased pressure and temperature from burial compressed and baked the peat into medium grade sub-bituminous coal. Between about 70 to 55 million years ago, tectonic forces caused dramatic deformation of the region and culminated in the formation of mountain ranges like the Beartooth, Pryor, and Big Horn mountains. This deformation tilted the sedimentary layers and associated coal seams in this area downward to the east. The coal in the Bear Creek field is part of the immense Fort Union Formation, which is estimated to contain over 200 billion tons of coal in eastern and central Montana. The Bear Creek Valley is located in the rain shadow of the prominent Beartooth Mountains to the southwest. The topography consists of rolling hills broken by numerous dry drainages. Bear Creek is a seasonal and meandering stream. Vegetation consists primarily of sagebrush, prairie grasses, and occasional small scrub brush.<sup>1</sup>

#### **Spatial Arrangement and Circulation Pattern (one contributing site)**

The Bearcreek Cemetery occupies four acres on the north face of a hill about one mile east of Bearcreek. The cemetery is delineated by a chain link fence (installed in 2006) on the north side and by a barbed wire fence on the east, west, and south sides of the site. The cemetery is accessed by a dirt road extending south from Montana Secondary 308. The access road enters the cemetery from the north through a gate, proceeds southeasterly for 380 feet before looping around back to the gate. A secondary road provides access to the northeast corner of the cemetery. A dirt spoil pile and remnants of concrete grave guards that once enclosed gravesites are located in the northeast corner of the cemetery. A small sandstone retaining wall across a natural ditch marks the west edge of the access road in the cemetery. The cemetery contains four distinctive primary features including a "Meditation Center," Smith Mine Disaster Memorial, a flagpole, and one large example of sepulcher art.

Landscaping within the cemetery grounds is minimal, consisting primarily of lilac bushes and one juniper tree that were likely planted by families of people buried in the cemetery. Other than the access road, there does not appear to have been any development work or landscaping within the cemetery grounds when it was established in 1909. Bearcreek Cemetery landscaping closely resembles the Benton Avenue Cemetery (24LC1921) in Helena, the Virginia City Cemetery (24MA723) in Madison County, and the Gebo Cemetery (24CB694) in Carbon County. The cemetery grounds consist of short prairie grasses in the disturbed sections with sagebrush and sedges dominating about one-quarter of the site in the undisturbed section of the cemetery. The graves are arranged in north-south rows. Most face toward the east with the headstones on the west end of the plots. There are no mausoleums or other burial crypts on the grounds. Many graves are enclosed by pipe railings, woven wire fences or low concrete grave guards.

---

<sup>1</sup> David Alt and Donald W. Hyndman, *Roadside Geology of Montana*. (Missoula: Mountain Press Publishing, 1986), 223-224.

Bearcreek Cemetery

Name of Property

Carbon County, Montana

County and State

The cemetery is divided into eleven sections (A through K) with two sections (J and K) devoid of any burials. The majority of burials are in sections C, H, and I. Currently, 473 people are interred in the Bearcreek Cemetery with 156 bodies lying in unmarked graves. One hundred seven graves are of infants and children who perished between 1909 and 1993. Interments began in the cemetery in November 1909 (Helen Markovich) with the latest burial occurring nearly a century later in September 2009. Besides the marble angel described below, sepulcher art present in the cemetery consists only of carved headstones of adults, but particularly the graves of children. There are 39 graves that exhibit Cyrillic lettering in the cemetery with many including photographs of the deceased. All are black and white photographs with the exception of one color-tinted photograph marking the grave of three year-old Овѣн Почијева (Iliya Popovich) who died in Bearcreek in April 1916. These graves are primarily of coal miners and their families with a few marking the last resting places of several Bearcreek businessmen of eastern European descent. The Cyrillic-lettered graves are mostly located in the southeast quadrant of the cemetery in sections F, H, and I; but there are others scattered throughout the cemetery grounds. At least three people buried in the cemetery died of the Spanish Influenza during the 1918-1919 pandemic. Twenty-two men killed in the February 27, 1943 Smith Mine disaster are also interred in the cemetery.

The cemetery is arranged in 14 irregular north-south rows of plots with headstones and some footstones oriented east and west; the graves, however, are organized in north-south rows. As stated above, many graves are unmarked but their locations are discernable by oblong depressions in the ground. The graves face east with the headstones at the western end of the plots. Most of the graves are single units, but there are several family plots as well. The family plots are delineated by the cast concrete bollards (the Cenis family), woven wire fences, pipe railings, and, in many cases, concrete grave guards, which enclose both family plots and individual grave sites. There are two graves that are covered by concrete slabs.

There is a wide variety of materials used for headstones, including sandstone acquired from local quarries and granite, marble, and limestone markers purchased from local and out-of-state monument dealers. The granite stones generally have polished faces, but many are rough finished – or are a combination of the two. Many of the headstones (Photos 0035, 0037, 0039, 0040, 0042, 0044, 0049, 0055), appear to be standard monument designs that were available from out-of-state stonecarvers and advertised for sale in mortuary catalogs. The practice was common in Rocky Mountain region community cemeteries beginning after the American Civil War.<sup>2</sup> Approximately four percent of the headstones include photographs of the interred; all are associated with the eastern European “residents” of the cemetery. Some headstones include simple epitaphs, while others consist simply of name and dates of birth and death. Some headstones are surmounted by carved stone crosses, while two are carved into the shape of hearts (Mrs. John Bone and siblings George and Mary Tweedie), an open Bible (August Deruelle; Photo 0055), and three obelisks. The graves of some infants and children exhibit designs common to that age group, including lambs, empty baby shoes, and, for little Harold Sasich, a slumbering baby on a seashell (the headstone also includes a photo of the deceased). Many stones include decorative olive branches carved in them. Most of the headstones marking the graves of infants and children are comprised of marble. Some headstones sporting Cyrillic lettering also include the letters IHS (IH<sup>S</sup>OUS, the Greek symbols for JESUS) in addition to or in lieu of the photographs. Only a small number exhibit fraternal society symbols, including the Masons, the International Order of Odd Fellows, and the Fraternal Order of Eagles. There is only one marble military headstone. Headstones display a mixture of carved and etched lettering and designs. A few graves are marked by simple steel stakes with label frames or by wooden stakes. There are no mausoleums located in the cemetery, but there are four features on the site. Sandstone for headstones in the cemetery was locally quarried and are badly eroded.

There are four primary features associated with the Bearcreek Cemetery:

**Smith Mine Disaster Monument** (Feature 1; one contributing object)

This monument (Photos 0022-0025) honors victims of the Smith Mine Disaster that occurred on February 27, 1943. The monument is located about 420 feet south of the cemetery’s main gate. It is oriented east and west and faces north. The monument base is concrete and stepped; it measures 10 feet x 3 feet. It is encircled by a low concrete retaining wall that is currently filled with scoria. The retaining wall is 20 feet x 9 feet and raised about two feet on the south. A polished red granite cenotaph is centrally located on the concrete base and measures 6.5 feet x 1 foot and is 4 feet in height. The names of each victim of the mine disaster (including those buried in the Red Lodge Cemetery and elsewhere) are etched

<sup>2</sup> Families ordered headstones from monument companies based in the Midwest. For example, Harold Sasich’s headstone (Photo 0043) was available from H. Marquardt Marble and Granite Company of St. Louis. Headstones ordered from these companies consisted of marble, limestone, and granite. Evidence suggests that sandstone headstones in the Bearcreek Cemetery were carved locally from stone obtained from nearby quarries. Anette Stott, *Pioneer Cemeteries: Sculpture Gardens of the Old West*, (Lincoln: University of Nebraska Press, 2008), 134-35, 187.

Bearcreek Cemetery

Carbon County, Montana

Name of Property

County and State

in vertical columns on the north face of the monument. "SMITH MINE DISASTER" and "February 27, 1943" are etched into the granite along the top of the monument. The monument was dedicated on 30 May 1947.

**Flagpole** (Feature 2; one contributing object)

A flagpole (Photo 0026) is located on the hillside in the south half of the cemetery about 400 feet south of the main gate and about 20 feet directly north of the Smith Mine Disaster Monument. It consists of a steel pole mounted in concrete. The pole is capped with a metal ball and is approximately 40 feet in height. It is not known when the pole was erected, but, according to old timers in the Bearcreek area, it was before 1960.

**Sepulcher Sculpture** (Feature 3; one contributing object)

The funerary sculpture is associated with the burial plot of the Cenis family (Photos 0027-0030). The plot is located approximately 100 feet south of the cemetery's main gate. It is oriented east and west with the sculpture at the west end of the plot. The plot is enclosed by six decorative concrete bollards connected by linked chains. The south side of the plot is raised as it is built on a hillside and has a concrete retaining wall with rounded corners to accommodate the bollards. The sculpture faces east and looks down on the grave of Sidonie Cenis, who died in June 1911. The sculpture rests on a smoothed granite base with the name, date of birth and death, a photograph of the deceased woman, and an epigram that reads "Like a flower she passed away/Destroyed in all her bloom/She left this world and all her friends/To moulder in the tomb." The marble statue is of an erect winged and robed angel holding a funeral wreath and looking pensively down at Sidonie's grave. A partially rough cut granite headstone with a smoothed surface on the east and carved columns on the east marks the burial of Sidonie's father, Edouard (died May 1914) with a commemoration of his wife, Sidonia. In all, there are five burials within the plot dating from 1911 to 1965. The Cenises were prominent Bearcreek businessmen and entrepreneurs. Three of the burials are males and two are female ranging in ages from 19 to 77. The marble sculpture is unsigned, but was probably carved in Carrara, Italy and placed within the plot in 1912 by the Cenis family to memorialize the death of Sidonie the previous year.

**Meditation Center** (Feature 4; one noncontributing structure)

Installed in 2006, the meditation center (Photos 0020 and 0021) provides a panoramic view of the Bear Creek Valley and the cemetery, and is located just inside the main gate. It has a square footprint that is 12 feet x 15 feet. It consists of a concrete pad with a canopy roof supported by four square steel posts. The shed-roofed canopy is comprised of corrugated metal. The center is enclosed by a low concrete wall with fieldstone veneer on the exterior and stucco on the interior. There are two interpretive signs sheltered by the roof. One provides a listing of the names and locations of all the known graves located within the cemetery and the other presents a history of the Smith Mine Disaster. The interpretive signs are accessed through the north and south sides of the enclosing wall.

**Integrity**

The Bearcreek Cemetery retains excellent integrity. Red Lodge surveyor F. W. Hine platted the Bearcreek Cemetery with burial plots facing onto a circular path within the cemetery grounds. The plots were numbered from east to west within the cemetery. For reasons unknown, the original 1909 landscape plan and burial plot arrangement was abandoned in favor of linear rows, that while still oriented from east to west, display a north-south spatial arrangement. Burials since 1960 have retained that arrangement. The cemetery contains graves spanning a century from 1909 to 2009. Other than the construction of the Meditation Center, there have been no significant changes to the cemetery since the Smith Mine Disaster monument was dedicated in 1945. The cemetery is visually diverse and still functions as a burial ground. The setting of the site has not changed since the cemetery was established in 1909. It consists of a 4-acre area that is surrounded by land that is occasionally used for grazing purposes. The City of Bearcreek is visible about one mile west of the cemetery. There is no evidence that there was ever any formal landscaping of the site. The Meditation Center is not overtly intrusive. It constitutes a small part of the four-acre cemetery and is located on the extreme north side of the property. It does not visually or physically overwhelm the property and its presence does not diminish the overall feeling of place, the workmanship of the headstones, and the cemetery's importance to the area.

Bearcreek Cemetery  
Name of Property

Carbon County, Montana  
County and State

**8. Statement of Significance**

**Applicable National Register Criteria**

(Mark "x" in one or more boxes for the criteria qualifying the property for National Register listing)

- A Property is associated with events that have made a significant contribution to the broad patterns of our history.
- B Property is associated with the lives of persons significant in our past.
- C Property embodies the distinctive characteristics of a type, period, or method of construction or represents the work of a master, or possesses high artistic values, or represents a significant and distinguishable entity whose components lack individual distinction.
- D Property has yielded, or is likely to yield, information important in prehistory or history.

**Areas of Significance**

(Enter categories from instructions)

- EXPLORATION/SETTLEMENT
- SOCIAL HISTORY
- RELIGION
- ETHIC HERITAGE

**Period of Significance**

1909-1960

**Significant Dates**

1909, 1943

**Significant Person**

(Complete only if Criterion B is marked above)

\_\_\_\_\_

**Cultural Affiliation**

\_\_\_\_\_  
\_\_\_\_\_

**Architect/Builder**

F. W. Hine, surveyor  
\_\_\_\_\_  
\_\_\_\_\_

**Criteria Considerations**

(Mark "x" in all the boxes that apply)

Property is:

- A owned by a religious institution or used for religious purposes.
- B removed from its original location.
- C a birthplace or grave.
- D a cemetery.
- E a reconstructed building, object, or structure.
- F a commemorative property.
- G less than 50 years old or achieving significance within the past 50 years.

**Period of Significance (justification)**

The Period of Significance begins when the cemetery was established in 1909 and continues to 1960, fifty years ago. Interments are still occurring at the Bearcreek Cemetery.

**Criteria Considerations (explanation, if necessary)**

Please see Section 8

Bearcreek Cemetery

Carbon County, Montana

Name of Property

County and State

**Statement of Significance Summary Paragraph** (provide a summary paragraph that includes level of significance and applicable criteria)

The Bearcreek Cemetery is eligible for listing in the National Register of Historic Places under Criteria A and C. The period of significance for the cemetery is 1909 to 1960. The Bearcreek Cemetery is significant under Criterion A for its historic association with the history and development of the nearby coal mining communities of Washoe and Bearcreek. Those communities grew up in proximity to underground coal mines which provided the chief economic activity for the area. Many of the people interred in the cemetery worked in the mines and, in the case of 25 men buried there they also died in the mines. Other people buried include men and women important to the commercial and social life of Bearcreek and the surrounding area. The cemetery was and continues to be an important gathering place for the families of those buried in the cemetery. The cemetery is also important for its association with the Smith Mine Disaster of February 27, 1943. Twenty-two of the 25 miners buried in the cemetery died in the Smith Mine Disaster; a prominent red granite monument commemorates their loss. The mine disaster sparked the decline of the Bear Creek Mining District and the near demise of Bearcreek.

The Bearcreek Cemetery is eligible for listing in the National Register under Criterion C as representative of a simple rural burial ground. Although it was intended to be somewhat more sophisticated when surveyed in 1909, the reality was somewhat different. Instead of lots facing onto a circular path within the cemetery grounds as originally planned, they are organized in north-south rows and face east with the headstones on the west end of the burial plots. That arrangement had become common to the cemetery by 1919 after 106 people had been interred there. Indeed, 25 percent of the 473 burials occurred between 1909 and 1929, which corresponds with the heyday of mining in the Bear Creek District and the peak population of Bearcreek. Headstones in the cemetery reflect the ethnic origins of the people buried there, including northern, southern, and eastern Europeans and, of course, American-born people. There is minimal landscaping and what is there consists of lilac and juniper shrubs planted to decorate family plots. There is no all-encompassing landscaping plan for the cemetery. The headstones and burial plots located there are representative of the ethnic groups and of popular headstone designs at the times they were erected. Over 90 percent of the 473 known burials occurred prior to 1960. The cemetery represents the settlement of Bearcreek, the development of the Bear Creek District coal mines, and other events that have impacted the community, including the 1918-19 Spanish Influenza epidemic, and the 1943 Smith Mine Disaster. The headstones in the grave are not overly ornate, but include elements that are common to the historic period, specifically in the Cyrillic lettering and photographs affixed to the headstones of those internees of eastern European descent, the more ornate marble headstones of children buried there, and the simple sandstone and granite headstones of the graves of working class families who made up the bulk of Bearcreek's population. The cemetery retains the spatial organization set by interments beginning in 1909. The cemetery also marks a transition between the boot hill cemeteries of the initial settlement period in the American West and the more formal landscaped and organized cemeteries that became prevalent as settlement patterns progressed.

**Narrative Statement of Significance** (provide at least one paragraph for each area of significance)

The Bearcreek Cemetery is eligible for the National Register of Historic Places under Criterion A. Founded in 1906 by George and Lodenia Lamport and Robert and Ella Leavens, Bearcreek has historically been associated with underground coal mining. At its peak in 1914, five coal companies operated in the district, including the oldest mine in the district, the Montana Coal and Iron Company's Smith Mine. Within four years of its founding, Bearcreek boasted a population of 302 people with hundreds more living in the surrounding hills. Many were recent immigrants from northern, southern, and eastern Europe. Consequently, Bearcreek was a cosmopolitan and progressive community that was also bound by traditional ethnic differences. In 1909, the Lamports and Leavens donated land to the city for use as a cemetery. The divisions in Bearcreek society disappeared in death as the cemetery received them all regardless of political, cultural, and religious differences. The Bearcreek Cemetery best represents that cosmopolitan community and exhibits headstones containing languages and funerary cultural practices from all over Europe.

In February 1943, 75 local men lost their lives in the Smith Mine, Montana's worst underground coal mining disaster. Most of those men lived in Bearcreek or near the community. With their deaths, the community underwent a profound change as many of the survivors and the families of the dead left the area, leaving Bearcreek a near ghost town from which it has never fully recovered. The mine disaster also hastened the decline of underground coal mining in Montana

Bearcreek Cemetery

Name of Property

Carbon County, Montana

County and State

and led to new laws passed by the Montana legislature to safeguard as much as possible the men working underground. The Smith Mine disaster is represented in the cemetery by the graves of 22 men killed there and by a red granite monument dedicated to these and the others who died; it was dedicated two years after the tragedy. The Bearcreek Cemetery best represents the tragedy of the Smith Mine disaster with respect to those who perished in the ordeal.

The Bearcreek Cemetery is eligible for the National Register under Criterion C as representative of a simple, organized community burial ground. Although originally planned as a designed landscape, the cemetery did not develop that way and is practically devoid of landscaping. The setting of the site is intact and has not changed significantly since its establishment in 1909. It is still located one mile east of Bearcreek city limits and is surrounded by land occasionally used for grazing cattle. It is still accessed by a two-track dirt road. The only post-1960 features are the meditation center and the chain link fence that delineates the site on the north. There have been only 76 burials in the cemetery since 1960 and the associated headstones for these 76 burials are in keeping with the pre-1960 stones and are not intrusive to the property. The cemetery is stark and unadorned well represents the working class community of Bearcreek. Headstones present in the cemetery include locally quarried and carved sandstone as well as the more prevalent carved monuments obtained through catalogs and monument companies in the region and from out-of-state. The headstone marking the grave of Harold Sasich (Photo 0043), and Sidonie Ceniz (Photos 0029-0030), moreover, represent the works of commercial monument carving companies that were widely available after the American Civil War.

The Bearcreek Cemetery clearly expresses its historic design values and, based on historic photographs, certainly conveys its historic appearance. The cemetery is associated with coal mining and with the February 1943 Smith Mine Disaster. Underground coal mining dominated the local economy and is the reason for the existence of the nearby community of Bearcreek. Many of the men interred in the cemetery worked in the Bear Creek District mines. In the case of twenty-two men, they also died in the mines. The Smith Mine Disaster, which took the lives of 75 men, was the worst coal mining catastrophe in Montana history. The disaster resulted in the passage of new laws designed to protect miners working underground, but, more importantly for this area, caused a profound change in the community. A little over half of the 75 miners killed in the mine lived in Bearcreek or nearby Washoe. With their deaths, their families left the area either to leave bad memories behind or to find work. Within a short time, Bearcreek's population sank from a high of 324 people in 1940 to 162 by 1950. Families who lost loved ones in the mine abandoned their properties or relocated them. Others burned their property down. Many more were simply left to decay. Bearcreek's near ghost town status is entirely because of the Smith Mine Disaster. That change was further exacerbated by the closure of the Smith Mine in 1953 and subsequent end of coal mining in the district. Men who worked in the mine after the disaster are also interred at the cemetery.

Underground coal mining drew hundreds of European immigrants to the area to work in the mines. During its peak in 1914, miners from northern, southern, and eastern Europe worked closely with native-born men in the Bear Creek mines. Those men brought their families with them. Names like Cameron and McDonald, worked and socialized with people with names like Mourich, Chesarek, Rasborschek from eastern Europe. Finlanders, Italians, and Germans also worked in the mines and lived in the communities. When they died, at least with the eastern Europeans, they practiced their traditional funerary customs. Headstones decorated with Cyrillic lettering, cameo photographs of the deceased and other decorative features attest to the historically strong eastern European presence in Bearcreek. These groups left little behind them in the extant built environment in Bearcreek, but their presence is very well represented in the cemetery. Bearcreek was historically a blue collar community and the cemetery reflects that working class origin.

*Criterion Consideration D Justification:* The Bearcreek Cemetery illustrates significant associations with historic events and patterns of social development. The cemetery's interment history mirrors the major events that impacted the nearby communities. The headstones provide a wide variety of appearances, but are basically simple. The markers reflect the different ethnic populations that lived in the area. The most ornate stones are those marking the gravesites of eastern Europeans buried in the cemetery. Also included are victims of murder, the 1918-1919 Spanish Influenza pandemic, and men killed in the 1943 Smith Mine Disaster. The cemetery represents a cross section of Bearcreek's social and commercial history from 1909 to 1961. Unlike many other cemeteries in Montana that were developed at approximately the same time (e.g. the Forestvale Cemetery in Helena, Montana; listed on the National Register, 1990), there are no class boundaries represented in this cemetery. The headstones are all composed of the same materials (sandstone, limestone, marble, and granite) with most displaying only a minimal amount of ornate carving or other representations that might designate class differences. Those resting in the Bearcreek Cemetery were, for the most part, miners, businessmen, and their families. Other than the southeast corner of the cemetery, which contains ethnic Croations,



Bearcreek Cemetery

Carbon County, Montana

Name of Property

County and State

Slovenians, Montenegrins, and other eastern Europeans, there is no hierarchy of burials that are delineated by more prominent monuments, mausoleums, vaults or crypts.

**Developmental history/additional historic context information (if appropriate)**

The Bear Creek Valley is part of the aboriginal territory of the Apsaalooke (Crow) Indians. Arapooish, an Apsaalooke chief described Crow Country as "a good country because the Great Spirit had put it in exactly the right place." The Mountain Crow division of the Apsaalooke came to live in northern Wyoming and southeastern Montana over 500 years ago or possibly earlier. The Mountain Crow ranged as far east as the Powder River and as far west as the Yellowstone River and depended on the availability of game and edible plants. The 1851 Fort Laramie Treaty designated Crow Territory to encompass all lands south of the Musselshell River between the headwaters of the Yellowstone River to the west, the headwaters of the Powder River to the east and the main ridge of the Wind River Mountains in Wyoming as its south boundary. After the discovery of gold in southwestern Montana in the early 1860s, continuous pressures by non-Indians resulted in several reductions to the original Crow Indian Reservation boundaries. The second Fort Laramie Treaty in 1868 reduced Crow Territory by removing all lands in Wyoming and north of the Yellowstone River and making the eastern boundary the divide between the Big Horn and Rosebud rivers, restricting the Crow to approximately eight million acres. An 1880 agreement ratified in 1882 eliminated all Crow lands west of the Boulder River. In this same agreement, the Crow ceded a wide strip of land that extended from the Boulder to the Clarks Fork of the Yellowstone encompassing the Red Lodge/Bear Creek coal field. The 1882 agreement allowed for the development of coal deposits located within the ceded strip. Pressure placed on the Crow Indians by mining, railroad and cattle interests resulted in Congress removing the area east of the Boulder River to the present Crow Indian Reservation's western boundary in 1893.<sup>3</sup>

James "Yankee Jim" George discovered extensive coal deposits in the Bearcreek area in 1866. Its remoteness, lack of a market for the product, and its location within the Crow Reservation, delayed its exploitation for over two decades. In 1887, a cartel of Bozeman and Helena businessmen formed the Rocky Fork Coal Company to mine the fossil fuel at the site of a tiny stage stop settlement on the Meteteetsee Trail called Red Lodge. By late 1887, the company's owners made an arrangement with the Northern Pacific Railway (NPRR) to construct a branch line from Laurel, Montana 44-miles south to Red Lodge and the coal mines. Completed in April 1889, the Rocky Fork & Cooke City Railway sparked an expansion of coal mining in the region, especially after the line was acquired by the NPRR the following year. The boom was further augmented in 1892 when the Crow Tribe ceded the region from its reservation, thereby opening up the territory to agricultural development. Much of the coal mined at Red Lodge was utilized by the NPRR. Over the hill in the Bear Creek drainage, development of the coal reserves was hampered by its inaccessibility and the lack of a good transportation system. Small-time miners, however, established a number of wagon mines in the district to sell coal for domestic purposes in Red Lodge.<sup>4</sup>

By the mid-1890s, many entrepreneurs recognized that the coal in the Bear Creek district was of much higher quality than that mined a few miles away in Red Lodge. Consequently, Billings surveyor George T. Lamport and former NPRR executive Elijah Smith established the first commercial mine in the district in 1897. Coal extracted from the mine was freighted over the hill to Red Lodge customers during the winter months. In 1905, Billings bankers Christian and Peter Yegen, Bert E. Vaill, and Lamport formed the Bear Creek Coal Company and began operations a mile to the east of the Lamport/Smith Mine. Still, mining in the district was hampered by the lack of good roads and a railroad. Although the NPRR investigated the possibility of building a branch line to the mines from its terminus at Bridger, it continued to rely on

<sup>3</sup> Little Big Horn College, "Apsaalooke Writing Tribal Histories Project," obtained at <http://lib.lbhc.cc.mt.us/history>; Charles J. Kappler, ed. and comp. *Indian Affairs: Laws and Treaties 2 vols.*, 2 (Washington, DC, 1904), 594-596. Crow treaties and agreements are available at <http://www.digital.library.okstate.edu/kappler/>. For a discussion of reductions to the Crow Reservation, see William M. Brooke, "A Contest over Land: Nineteenth Century Crow-White Relations," *Montana Vistas: Selected Historical Essays* ed. Robert Swartout, Jr., (Washington, DC, 1981), 1-24 and Burton M. Smith, "Politics and the Crow Indian Land Cessions, 1851-1904," *Montana, The Magazine of Western History* 36 (Autumn 1986), 24-37; Michael P. Malone, Richard B. Roeder and William L. Lang, *Montana: A History of Two Centuries*, (Seattle: University of Washington Press, 1991), 122-123.

<sup>4</sup> Jon Axlne, Cultural Resource Inventory and Evaluation: Bearcreek – East & West {S-RS 308-1(1)8}, Montana Department of Highways, 1991, 4-5; Shirley Zupan and Harry J. Owens, *Red Lodge: Saga of a Western Area*, (Red Lodge: Carbon County Historical Society, 1979), 9-10, 20, 22, 38-39, 47-49; Albert L. Babcock, *An Illustrated History of the Yellowstone Valley*, (Spokane: Western Historical Publishing, 1907), 234-235; Jon Axlne, "Something of a Nuisance Value: the Montana, Wyoming & Southern Railroad, 1905 – 1953," *Montana The Magazine of Western History*, 40:4, (Winter 1999), 51; Red Lodge Picket, February 1907.

Bearcreek Cemetery

Name of Property

Carbon County, Montana

County and State

Red Lodge and Bridger coal to fuel its locomotives in the division. In 1905, Billings entrepreneur Phil Gallaher was finally able to convince a group of Pennsylvania businessmen to finance the construction of a short line railroad from NPRR terminus at Bridger to the coal mines on Bear Creek. In May 1905, they incorporated the Yellowstone Park Railroad. The owners of the Bear Creek Coal Company also offered incentives in the form of rebates to construct the line to their mine. Construction of the line began in September 1905 and was completed to the Bear Creek Coal Company Mine in September 1906. The railroad established the community of Belfry eight miles east of the mines at the mouth of Bear Creek to serve as its headquarters.<sup>5</sup>

In anticipation of the arrival of the railroad, Lamport, together with his son-in-law and business partner Robert Leavens, purchased land just east of the mines between 1903 and 1905 in Section 4, T8S, R21E and formed the Bearcreek Town & Improvement Company. Lots in the new community of Bearcreek sold quickly as mining expanded in the district. Even before the mining camp had incorporated, the *Red Lodge Picket* reported "Bearcreek is showing signs of thrift and activity each succeeding day. At present fourteen stores have been opened up or are about ready to start for business, the buildings yet unfinished receiving the last touches." By December of 1906, the town incorporated, had a post office, began construction of concrete sidewalks, a telephone system, a city water system, and the installation of electric streetlights. The *Picket* reported in August 1906:

The future of the little city of Bearcreek may not be written until some other day. Its location is not the most desirable, topographically speaking, for a city of extensive magnitude. That it is destined to become one of the greatest coal mining camps in the entire western country, is an assured fact, and those who are acquainted with the lay of the country say that further down the valley, a short distance, may be found a location for a fine residence district. At present the town is growing rapidly, no less than ten buildings being in [the] course of construction. Among these are a building that is being erected by B. E. Vaill in which a bank will be established, a business building adjoining it . . . three other businesses and a number of dwelling houses.

By end of the year, 250 miners (about half of the population of the district) were working in the four commercial mines operating in the district, including the Montana Coal and Iron Company's Smith Mine two miles west of town. Since coal mining did not require skilled labor, the mines attracted immigrants from Serbia, Croatia, Montenegro, Italy, and Scotland. As in other mining camps, ethnic groups settled together in neighborhoods. The broken topography encompassing Bearcreek and the seasonal nature of the work, compelled builders to hastily construct rudimentary residences (lean-to's and dug-outs) in the community to house the miners. From 1906 to 1921, Bearcreek suffered from a chronic housing shortage. Despite the lack of good housing, Bearcreek boomed in the first decade of the 20<sup>th</sup> century.<sup>6</sup>

By 1910, Bearcreek claimed a population of 302 people. The mines employed about half the adult male population of the community. The commercial district had expanded to include 23 businesses, including ten saloons. The Carbon County Chamber of Commerce touted Bearcreek's main street as

[T]he center of a district that is destined to become famous for its building stone. There is a brickyard there and other industries in the first stages of development. There are two hotels, one as fine as can be found in this part of the country; . . . a bank, lumberyard, furniture store, drug store, jewelry store, two butcher shops, two restaurants, livery and feed stables, barber shops, stage lines and one of the finest water systems in the world, a splendid electrical-light system, besides many small stores, lodging houses and telephone exchanges. The town is the center of a population of about 1,200, which includes the mining communities and the outlook is for an increase in the population within the next year . . . .

The city's economy, however, was based on the ability of the mines to ship coal out on the Yellowstone Park Railway (renamed the Montana, Wyoming & Southern [MW&S] Railway in 1909). Unfortunately, the railroad was dependent on the NPRR, which provided coal cars to the railroad for the shipment of coal out of the mines. The NPRR, therefore, had indirect control of the fortunes of the Bear Creek district and Bearcreek. Even considering its reliance on the seeming

<sup>5</sup> *Red Lodge Picket*, February, 1907; Helen Fitzgerald Sanders, vol. II, *History of Montana*, (Chicago: Lewis Publishing, 1913), 1192; Babcock, *History of the Yellowstone Valley*, 242-243; *Red Lodge Picket*, 23 August 1906; Axline, "Something of a Nuisance Value," 51-52, 56.

<sup>6</sup> Axline, Cultural Resource Inventory, 4-5; *Red Lodge Picket*, 18 January 1906; *Ibid*, 4 January 1906; *Ibid*, 18 January 1906; Roberta Carkeek Cheney, *Names on the Face of Montana: The Story of Montana's Place Names*, (Missoula: Mountain Press, 1990), 15; *Red Lodge Picket*, 23 August 1906; *Ibid*, February, 1907; Jeff McNeish, *Bear Creek Valley*, Images of America Series (Charleston, SC: Arcadia Publishing, 2009), 45.

Bearcreek Cemetery

Carbon County, Montana

Name of Property

County and State

vagaries of the NPRR, Carbon County was the dominant coal producer in Montana, with Bearcreek providing the necessary services to the miners working one of the richest underground coal mines in the northern Rockies, the Smith Mine (24CB0169).<sup>7</sup>

The coal industry in south central Montana waned after World War I, initiating a downturn in the Bear Creek mines. The MW&S remained dependent on the NPRR, which often withheld coal cars from the mines. The precarious economic condition was exacerbated by the NPRR's increasing reliance on coal strip-mined at Colstrip and by the increasing popularity of alternate fuels used for domestic purposes. Bearcreek's commercial district remained intact during the 1920s, but hard economic times during the 1930s caused a profound change in the city's appearance. In 1935, the Bearcreek High School's newspaper reported "Such a thing as passing a house on the road is not unusual to anyone around here. At the rate the houses are being moved, we may need a traffic cop to 'let the houses go by!'" Others burned down their buildings for the insurance money. Many just quit paying taxes on their property, which was then seized by the County. The Smith Mine Disaster on February 27, 1943 was the final straw for Bearcreek's already shaky fortunes. An explosion in the Smith Mine and resulting methane gas inhalation killed 74 men, many of whom lived in Bearcreek. The widows of many of those men soon left town, abandoning their properties to the Carbon County tax collector.<sup>8</sup>

The closure of the Smith Mine and the abandonment of the MW&S Railroad in 1953, virtually guaranteed that the depressed economy in the Bear Creek District would continue for the foreseeable future. The population of Bearcreek dropped from 237 individuals in 1950 to only 61 in 1960, making it the smallest incorporated city in Montana at that time. In 1963, newspaper reporter Faye Kuhlman and her husband moved to Bearcreek from Billings. Recognizing the potential of the near ghost town as an artists' and retirement community, Kuhlman began publication of small mimeographed histories of the community and actively promoted the sale of city lots that were owned by the county. Through her efforts, the city restored the Bearcreek Bank building (24CB1206; listed in the National Register 2004) and caused a revitalization of the community that lasted until her death in 1975. In 2000, Bearcreek claimed a population of 83 people.<sup>9</sup>

**The Bearcreek Cemetery**

As Bearcreek's population grew with the expansion of nearby coal mining operations, a city cemetery became necessary for the community. The first recorded death in Bearcreek occurred in November 1906 when Stephen Novota shot and killed Gabriel Sedlack outside their boardinghouse. Sedlack was buried in the Red Lodge Cemetery, about eight miles to the west. A steep divide and the City of Red Lodge lay between Bearcreek and the Red Lodge Cemetery. In June 1909, Bearcreek founders George and Lodenia Lamport and Robert and Ella Leavens conveyed four acres to the City of Bearcreek for use as a local cemetery on a hillside about one mile east of the town. Red Lodge City Surveyor Fred Hine surveyed the site of the cemetery. Hine designed the cemetery to include a circular pathway traversed by roads entering the cemetery from the north, south, east and west and intersecting in the center of the burial ground. The cemetery consisted of 204 burial plots. There are no records indicating what the city's plans were for the cemetery in regards to landscaping. The first interment in the new cemetery occurred on November 28, 1909 when six year-old Helen Markovich was laid to rest. Within a year of the cemetery's founding, Ms. Markovich was joined by only two other people buried in the cemetery.<sup>10</sup>

At its peak in 1920, Bearcreek numbered 744 residents within its corporate city limits. Of those, 77 emigrated to the United States from the Austrian-Hungarian Empire during the first two decades of the twentieth century. The US Census records specify what part of the empire they counted as their homeland, primarily Croatia, Montenegro, and Slovenia. Most of the men worked in the nearby coal mines, while the majority of the adult women worked in the home. While not the only ethnic group represented in the coal camp, the eastern Europeans were certainly the dominant ethnic group in Bearcreek followed by Italians. Despite that, the vast majority (67 percent) of Bearcreek residents in 1920 were native-born Americans. At least 30 percent of the 473 graves in the Bearcreek Cemetery are of eastern European emigrants. Other ethnic groups represented in the city and the cemetery include Germans, Finns, Belgians, French, Italians,

<sup>7</sup> Many of the miners in the Bear Creek District lived in the nearby Anaconda Copper Mining Company town of Washoe or in boarding houses adjacent to the mines. U.S. Census Records, 1910; Axline, Cultural Resource Inventory, 5; T. E. Butler, *Carbon County: Its Resources and Its Future*. (Red Lodge: The Republican Picket and Bridger Times, 1909), 13, 40-41; Axline, "Something of a Nuisance Value," 48-49, 57-59.

<sup>8</sup> Axline, "Something of a Nuisance Value," 61-63.

<sup>9</sup> Axline, *Ibid*, 62-63; US Census Records; 62-63; *Great Falls Tribune*, 29 May 1966; Fay Kuhlman, *Bearcreek, Montana*, (Bearcreek: Banner Press, 1972).

<sup>10</sup> Mel Gemmill and Edward Fenlason, *Murder by the Mountains: Murder in Carbon County, 1888-1929*, (East Helena: E & M Books, 2004), 134-139; Certificate of Survey: Bearcreek Cemetery, 21 June 1909, Clerk and Records Office, Carbon County Courthouse, Red Lodge, Montana.

Bearcreek Cemetery

Carbon County, Montana

Name of Property

County and State

Scandinavians, and Scots. Only the headstones marking eastern European graves, however, can be clearly identified with a specific ethnic group. These include Cyrillic lettering and photographs of the dead. They alone among the diverse ethnic groups represented in the Bearcreek Cemetery brought their particular burial customs with them. The remaining 453 stones and markers do not suggest any specific ethnic heritage.<sup>11</sup>

The Bearcreek Cemetery is typical of Rocky Mountain region community cemeteries during the late nineteenth and early twentieth centuries. It also represents a transition from the haphazardly organized boot hill cemeteries of the earliest phase of western settlement to the more strictly controlled "fair mount" cemeteries that later became popular in western urban areas. Like the boot hill cemeteries, the headstones in the Bearcreek Cemetery make no distinction between classes or occupation. Indeed, the lack of that distinction is indicative of the homogeneity of Bearcreek as a cosmopolitan working class community. The only division is ethnic, between the orthodox eastern Europeans and other nationalities interred within the cemetery. The eastern Europeans are concentrated in the southeast section of the cemetery. Nearly all of the headstones are composed of granite and characterized by Cyrillic lettering with photographs decorating many of them. Also typical of Rocky Mountain cemeteries during this period is the lack of landscaping and planned pathways at the Bearcreek Cemetery. Like fair mount cemeteries, the Bearcreek Cemetery includes neatly arranged burial plots, some white marble monuments, and a dramatic mountain vista, in this case, the Beartooth Mountains. The cemetery utilizes the natural topography of the hillside east of Bearcreek; however, there was no attempt by its founders to create a pastoral landscape as was common to fair mount cemeteries. Art historian Anette Stott has written of cemeteries that resembling the Bearcreek Cemetery:

The independent spirit of westerners may also be evident in their refusal to expend energy and resources in altering the landscape any more than necessary. Many mountain cemeteries in small towns were neither irrigated nor planted, relying on the natural invasion of native grasses to cover new graves.<sup>12</sup>

The Bearcreek Cemetery is not irrigated or intentionally landscaped and is covered with native vegetation. While it was not intended to function as a public park as were fair mount cemeteries in larger urban areas, the cemetery was an important local gathering place.

Headstones within the cemetery are a conglomeration of native sandstone, granite, limestone, and marble stones reflecting the development of the cemetery from its first burial in 1909 through 1960. Sandstone markers were likely quarried in the Bearcreek, Billings or Columbus areas and carved by local monument makers. There are several sandstone headstones in the Bearcreek Cemetery (Photos 0047, 0053, 0056). Many of the stones, however, are badly eroded and their carvers are unknown. The headstone for Roza Cernik (1881-1917) is a good example of a locally produced sandstone headstone (Photo 0053).

The American West provided a lucrative market for Midwestern and eastern monument companies. Many westerners believed that monuments made in Italy, New England, and Rhode Island "carried more cultural weight than anything carved locally." Beginning in the 1880s, granite became more popular for headstones, while marble statues imported from Italy after 1900 were cheaper to import than locally produced funerary statuary. Bearcreek's proximity to the Montana, Wyoming & Southern Railroad gave it access to out-of-state monument companies. Family members could order, through catalogs provided by local undertakers, premade, mass-produced headstones from monument companies outside the immediate area or in other states. Granite stones in the cemetery were not locally produced and were likely acquired from a monument company. The headstones for Andrew Lubarda (Photo 0036), Sam Barovich (Photo 0037), and Iliya Popovich (Photo 0042) are good examples of granite headstones located in the Bearcreek Cemetery.<sup>13</sup>

Limestone and marble headstones are also well represented in the cemetery. In the Bearcreek Cemetery, marble headstones most often mark the graves of children. Along with the sepulcher statue marking Sidonie Cenis's grave (see above), all other marble funerary sculptures mark children's graves. Art historian Anette Stott states that "children's deaths often inspired cutters, carvers, and sculptors to exert their best efforts." Common motifs that are present in the Bearcreek Cemetery are lambs (Photo 0057), monuments featuring children's clothing (Photo 0044), and, most poignantly, a baby sleeping on a seashell (Photo 0043). This particular theme first appears in the 1870s and was

<sup>11</sup> US Census Records: Carbon County, Montana, 1920. Available at [www.ancestry.com](http://www.ancestry.com).

<sup>12</sup> Unlike the more haphazardly arranged boot hill cemeteries, fair mount cemeteries are planned and landscaped burial grounds featuring stone or metal headstones rather than mounds of rocks, stakes, and wood head boards common to boot hill cemeteries. Fair mount cemeteries also featured planned pathways, mountain vistas, and marble statuary. Stott, *Pioneer Cemeteries*, 15, 20-21, 27.

<sup>13</sup> Stott, *Ibid*, 137, 187.

Bearcreek Cemetery

Carbon County, Montana  
County and State

Name of Property

common on children's graves throughout the American West. The image represents an innocent soul on a shell to suggest the transformation from earth to heaven. Sleep was a reference to death with the child expected to awaken to a new heavenly life. This headstone marks the grave of Harold Sasich, who died when less than a year old, indicates that love the boy's parents felt for him. The headstone, mass produced by H. Marquardy Granit and Marble Company of St. Louis, Missouri, honors his eastern European heritage, as it includes a photograph of the infant.<sup>14</sup>

The sepulcher statue of an angel that stands guard at Sidonie Cenis's grave was manufactured by one of the many statue companies active in Carrara, Italy before World War I. Italian statue factories advertised in American catalogs, magazines and newspapers. They annually produced thousands of tons of sepulcher art, mainly for export to the United States. The companies consistently produced high quality marble art at the lowest price in the world, making them attractive for American buyers. The Cenis family ordered the statue shortly after their daughter's death in 1911 and installed it at her grave in 1912. For other examples of marble headstones in the Bearcreek Cemetery, please see Photos 0049 and 0056.<sup>15</sup>

A common occurrence found on headstones of eastern European internees at the Bearcreek Cemetery are photographic portraits of the deceased. In the late nineteenth century, German craftsmen learned how to burn photographs onto porcelain, thereby producing a permanent image that both personalized and individualized the somewhat impersonal headstones. Monument carvers sent photographs of the deceased to companies in Chicago, Detroit, and Berlin to have the porcelain photographs made. Nearly all of the eastern European-style headstones in the cemetery include photographs (Photos 0034, 0042, 0051). One portrait, that of Iliya Popovich (Photo 0042) was hand-colored. The photographs, although limited to a particular ethnic group in the cemetery, individualized mass-produced granite and marble monuments and served as an aide-de-mémoire for mourners by countering the natural tendency for a loved one's features to fade from memory over time." Indeed, even today, the photographs provide a sense of connection to the person interred in the grave.<sup>16</sup>

The following biographies, arranged alphabetically, illustrate a cross section of the types of people interred in the Bearcreek Cemetery. They illustrate families, businessmen and those who died prematurely due to disease or accident.

**Walter Brown and Joe Naglich**

Early in the morning of November 2, 1923, pool hall proprietor Joe Naglich shot and killed Walter Brown in the Sam Smith Pool Hall and Lunch Counter on Bearcreek's main street. A card game was going on in the back room of the pool hall and patrons were sitting at the lunch counter. Naglich was attempting to close up for the night when Brown came in and demanded a drink. When Naglich refused to serve him, Brown "showered [Naglich] with epithets of the most insulting nature." Naglich then pulled a gun and swung it at Brown's head. The revolver went off and instantly killed Brown. Brown is interred in the Bearcreek Cemetery. A jury convicted Naglich of first degree murder and a judge sentenced him to life imprisonment in the Montana State Penitentiary in Deer Lodge. In 1930, however, Governor John E. Erickson pardoned Naglich, who returned to Bearcreek. Joe Naglich died in Bearcreek in 1965 and is also buried in the cemetery.<sup>17</sup>

**Cameron Family**

Six members of the Cameron family are buried in the cemetery. Jacob and Alexander Cameron emigrated to the United States from Scotland with their wives and children in 1913. Jacob worked as a coal miner in the Smith Mine and lived at Washoe, while Alexander lived in Bearcreek and worked as a laborer at one of the mines. Jacob, his wife Janet and three children leased a house from the Montana Coal and Iron Company at its Smith Mine (24CB196). Jacob died in 1939, but his sons also worked in the mines and were able to keep the leased house. At the time of the explosion at the mine in February 1943, the Cameron House was a sanctuary for families waiting for news about their loved ones in the mine and for rescuers resting between trips into the gas-filled mine. The family matriarch, Janet, organized the relief effort during the tough days that followed the disaster. She died in 1961. Her sons, Jacob, Jr. and John are also buried in the cemetery along with her brother-in-law Alex and his wife Jessie.<sup>18</sup>

<sup>14</sup> *Ibid*, 129, 131, 134-35, 193.

<sup>15</sup> *Ibid*, 197-198.

<sup>16</sup> *Ibid*, 280-281.

<sup>17</sup> Gemmill and Fenlason, *Murder by the Mountains*, 302-308.

<sup>18</sup> "Funeral Rites For Washoe Resident Are Held Monday," *Carbon County News*, 1 December 1939; US Census Records, 1910-1930; Susan Kushner Resnick, *Goodbye Wives and Daughters*, (Lincoln: University of Nebraska Press, 2010), 112-113.

Bearcreek Cemetery

Name of Property

Carbon County, Montana

County and State

**Eduard Cenis** was born in Belgium in 1858 and married Sidonia Henry in 1883. The couple emigrated to the United States in 1886, settling first at What Cheer, Iowa before moving to Colorado in 1889. In 1898, the couple filed on an 80-acre homestead near Bridger, Montana. Seven years later, they permanently relocated to Bearcreek, a fledgling coal mining camp near the foot of the Beartooth Mountains in Carbon County. Edouard and his three sons, Nestor, Edward Jr., and Marcel owned a variety of businesses in Bearcreek, including a movie theater, a taxidermy shop, and a photographer's studio. A daughter named Sidonie died in June 1911. In May 1912, the *Red Lodge Republican Picket* reported that a "monument of beautiful Italian marble sculptured in the figure of an angel" had been received and would be erected at her grave. Edouard died in 1914 and Sidonia in 1941. Their son, Nestor, was killed in an automobile accident in 1926, and son Marcel died in 1965. All were laid to rest in the family plot in the Bearcreek Cemetery.<sup>19</sup>

**Stephen Fekety** owned a dry goods store (24CB1211) on Bearcreek's main street from 1914 to 1933.<sup>20</sup>

**Leopold "Polie" Janskovitch** was born in Bearcreek in October 1910. Polie was one of seven sons of John and Ursula Janskovitch, who had emigrated to the United States from the Austrian-Hungarian Empire in 1896. John worked in the coal mines and lived on a rented ranch east of Bearcreek. In June 1913, he was killed when a horse he was riding was spooked by a Model T. The horse threw him and he was run over by the car. Ursula raised her seven sons on her own. She managed to purchase the ranch and operated a dairy farm from it to support her family. In the 1930s, Polie went to work with his brothers Frank and Tony in a wagon coal mine located across the county road from the Bear Creek Coal Company operation. Frank and Tony worked the mine off and on for the next 36 years. In November 1942, Tony was killed in a cave-in in the mine. For several years thereafter, Frank and Polie worked in the Montana Coal and Iron Company's Foster Gulch Mine. Polie was one of the rescue workers in the wake of the explosion at the nearby Smith Mine. He helped install the brattice barriers to improve the ventilation in the mine and helped remove the bodies. In 1947, he married Jean Mourich, the widow of Jack Mourich who was killed in the mine. Jean's father, Sam Alexander, and brother-in-law Frank Mourich were also killed in the mine; all are buried at the Bearcreek Cemetery. After the mine disaster, he worked for a time at the Elk Creek Basin oil fields in Wyoming before reopening the family's wagon mine. New federal safety regulations forced Frank and Polie to permanently shut down their mine in the early 1970s. Jean Janskovitch died in 1990 and Polie in 1997. Both are buried at the cemetery.<sup>21</sup>

**George Lusin** was born in Yugoslavia in September 1859, and emigrated to the United States in 1888. He moved to East Helena, Montana in 1893, where he operated the Lusin Brothers saloon on West Main Street with his brother Jacob. He settled in Bearcreek in 1906 with his longtime housekeeper and lover, Lucy Putzell (Lucya Pucely), who had emigrated to the US from Yugoslavia in 1899. He operated a saloon in the coal camp and served as the Treasurer of the Bearcreek Retail Liquor Dealers Association from 1907 until his death in 1915. In 1913, Lusin purchased two lots in Bearcreek's main street and hired Sam Stiller and Jacob Mourich to build a substantial brick business block (24CB1209) on them. He intended the building to house a grocery store in one half of the building and a saloon in the other half. Lusin and Putzell lived in the basement of the unfinished building. Unfortunately Lusin died of blood poisoning in July 1915 before the building was completed. His will, signed on his deathbed, left his estate to Putzell. Lusin's nephews filed probate against the will stating that he was not in his right mind when he signed the document. At the probate hearing, it was revealed that Putzell, an illiterate, had financed the construction of this and two adjacent buildings for \$16,000. Based on that, the court ruled in favor of Putzell. She owned the building and lived in Bearcreek until her death in 1935. The Bearcreek Saloon building still functions as a bar and restaurant on Main Street.<sup>22</sup>

### **Smith Mine Disaster Victims**

At about ten a.m. on February 27, 1943, an explosion and poison gas killed 75 coal miners in the Smith Mine, about four miles west of the cemetery. Most of the dead were residents of Bearcreek or the nearby community of Washoe. Although rescuers did not recover the last bodies from the mine until March 6<sup>th</sup>, burials of the victims began in Red Lodge, Bearcreek, and elsewhere the day before. Twenty-two men killed in the mine are buried in the Bearcreek

<sup>19</sup> Bill Cenis, *From Belgium to Bearcreek: The Story and Edouard and Sidonie Cenis*, (Privately Published, 2007), 14ff; Author's correspondence with Bill Cenis, 15 July 2010, (*Red Lodge Republican Picket*, 9 May 1912).

<sup>20</sup> Axline, Bearcreek – East & West, 45.

<sup>21</sup> An interview of Polie and his experiences working the Roadside Mine with his brothers is included in the 1989 Montana Department of State Lands' documentary *Against The Darkness*. *Montana Free Press*, February 1993; US Census Records; *Carbon County News*, 15 October 1997; *Billings Gazette*, 3 May 1964).

<sup>22</sup> US Census Records 1900, 1910; Helena City Directories, 1890-1904; Billings and Carbon County Directories, 1909-1915; Site Form: Jankovich & Pekich Saloon and Billiards hall (24CB1209), on file at Archaeological Records, Department of Anthropology, The University of Montana, Missoula, Montana.

Bearcreek Cemetery

Carbon County, Montana

Name of Property

County and State

speech. In it he stated that "We honor our beloved dead, we revere their noble acts, and we cherish their memory in our hearts. We have erected this monument in order that future generations may know of the horrible and untimely death of these men, and the honor and love in which we hold them. But before we leave this sacred spot, let us dedicate our hearts, our lives, to the principle that never again will such a disaster occur."<sup>23</sup>

### **Spanish Influenza Victims**

There are at least three confirmed victims of the Spanish Influenza pandemic in Bearcreek buried in the cemetery. A particularly virulent strain of influenza appeared in western China in June 1918 and quickly spread around the globe. Over a ten-month period, over half a million Americans died of the disease with 5,000 deaths from the disease in Montana. Indeed, Montana was the fourth hardest hit state in the United States. Deaths from the disease spiked from October 1918 through March 1919 when the disease finally abated. Thirteen people were interred in the cemetery during that time. Ten of them in November 1918 during the height of the pandemic in Montana. A review of the extant death certificates, however, failed to designate the Spanish Influenza as the cause of death, although it is likely that it was at least a contributing factor to their demise. Three people identified as dying from the disease are buried in the cemetery. James Orr and Charles Owen, both who worked at the Bear Creek Coal Company mine, died in early November 1918. They were buried in the cemetery at a double funeral on November 10, 1918. Red Radonovich perished from the flu on November 29, 1918. A native of Montenegro, he emigrated to the United States and worked as a miner at the Anaconda Copper Mining Company's mine at Washoe at the time of his death. There are at least seven other people buried in the cemetery who died during the height of the pandemic between October and December 1918. It is not known, however, if their deaths were caused by the Spanish influenza or from complications caused by it.<sup>24</sup>

**George Sucker** emigrated to the United States from Germany in 1903 and operated the F & S Garage (24CB1210) in Bearcreek from 1927 to 1939. He died in 1960.<sup>25</sup>

<sup>23</sup> McNeish Bear Creek Valley, 125; "Memorial Services Held for Mine Disaster Dear," *Carbon County News*, 2 March 1944; "Memorial Rites Conducted for Mine Disaster Dead," *Carbon County News*, 1 March 1945; "Third Anniversary Disaster Memorial is Held," *Carbon County News*, 27 February 1946; "Memorials Erected at Bearcreek and Red Lodge Cemeteries," *Carbon County News*, 30 May 1947; Resnick, *Goodbye Wives and Daughters*, 214.

<sup>24</sup> During the six week period in October and December 1918, 3,222 Montanans succumbed to the disease or from complications of the flu. Pierce Mullen and Michael L. Nelson. "Montanans and 'the Most Peculiar Disease': The Influenza Epidemic and Public Health, 1918-1919." *Montana The Magazine of Western History*. 37:2 (Spring 1987), 50, 52, 58; "Bearcreek," *Red Lodge Picket*, 14 November 1918.

<sup>25</sup> U.S. Census Records, 1900-1930; Site Form: F & S Garage (24CB1210) on file at Archaeological Records, Department of Anthropology, The University of Montana, Missoula, Montana.

Bearcreek Cemetery  
Name of Property

Carbon County, Montana  
County and State

**9. Major Bibliographical References**

**Bibliography** (Cite the books, articles, and other sources used in preparing this form on one or more continuation sheets)

Please see Continuation Sheets

**Previous documentation on file (NPS):**

preliminary determination of individual listing (36 CFR 67 has been requested)  
 previously listed in the National Register  
 previously determined eligible by the National Register  
 designated a National Historic Landmark  
 recorded by Historic American Buildings Survey # \_\_\_\_\_  
 recorded by Historic American Engineering Record # \_\_\_\_\_

**Primary location of additional data:**

State Historic Preservation Office  
 Other State agency  
 Federal agency  
 Local government  
 University  
 Other  
Name of repository: \_\_\_\_\_

Historic Resources Survey Number (if assigned): \_\_\_\_\_

**10. Geographical Data**

**Acreage of Property** 4.0  
(do not include previously listed resource acreage)

**UTM References**

(Place additional UTM references on a continuation sheet)

A	<u>12</u> Zone	<u>646269</u> Easting	<u>5001989</u> Northing	C	<u>12</u> Zone	<u>646387</u> Easting	<u>5001877</u> Northing
B	<u>12</u> Zone	<u>646382</u> Easting	<u>5002003</u> Northing	D	<u>12</u> Zone	<u>646272</u> Easting	<u>5001874</u> Northing

**Verbal Boundary Description** (describe the boundaries of the property)

The cemetery is located in the SW¼ NE¼ SE¼ of Section 4, T8S, R21E. The northwest corner of the cemetery is located approximately 700 feet south of Secondary Highway 308 about one mile east of Bearcreek. From the northwest corner proceed 330 feet easterly to the northeast corner, then 396 feet southerly to the southeast corner of the cemetery and then 330 feet westerly to the southwest corner and then, finally, 396 feet northerly to the starting point.

**Boundary Justification** (explain why the boundaries were selected)

The boundaries are delineated by barbed wire and chain link fences and encompass the 473 known burials included in the cemetery. The boundaries are also differentiated by the natural vegetation outside the fence and the vegetation inside the fence.

**11. Form Prepared By**

name/title Jon Axline/Historian  
organization \_\_\_\_\_ date July 27, 2010  
street & number 448 Parriman Street telephone (406) 444-6258  
city or town Helena state MT zip code 59602  
e-mail jaxline@mt.gov



Bearcreek Cemetery  
Name of Property

Carbon County, Montana  
County and State

**Additional Documentation**

Submit the following items with the completed form:

- **Maps:** A **USGS map** (7.5 or 15 minute series) indicating the property's location.  
A **Sketch map** for historic districts and properties having large acreage or numerous resources. Key all photographs to this map.
- **Continuation Sheets**
- **Additional items:** (Check with the SHPO or FPO for any additional items)

**Photographs:**

Submit clear and descriptive black and white photographs. The size of each image must be 1600x1200 pixels at 300 ppi (pixels per inch) or larger. Key all photographs to the sketch map.

**(See Continuation Sheets)**

**Property Owner:**

(Complete this item at the request of the SHPO or FPO.)

name Town of Bearcreek  
street & number 102 East Main telephone 406-446-1221  
city or town Bearcreek state MT zip code 59007-1221

**please see Continuation Sheets**

**Paperwork Reduction Act Statement:** This information is being collected for applications to the National Register of Historic Places to nominate properties for listing or determine eligibility for listing, to list properties, and to amend existing listings. Response to this request is required to obtain a benefit in accordance with the National Historic Preservation Act, as amended (16 U.S.C.460 et seq.).

**Estimated Burden Statement:** Public reporting burden for this form is estimated to average 18 hours per response including time for reviewing instructions, gathering and maintaining data, and completing and reviewing the form. Direct comments regarding this burden estimate or any aspect of this form to the Chief, Administrative Services Division, National Park Service, PO Box 37127, Washington, DC 20013-7127; and the Office of Management and Budget, Paperwork Reductions Project (1024-0018), Washington, DC 20503.

**United States Department of the Interior  
National Park Service**

**National Register of Historic Places Continuation Sheet**

Bearcreek Cemetery (24CB1250)

Name of Property

Carbon County, Montana

County and State

N/A

Name of multiple listing (if applicable)

Section number: Section 9

**Bibliography**

- Alt, David and Donald W. Hyndman. *Roadside Geology of Montana*. (Missoula: Mountain Press Publishing, 1986).
- Anderson, Paul. "There is Something Wrong Down Here": The Smith Mine Disaster, Bearcreek, Montana, 1943." *Montana The Magazine of Western History*. 38: 2 (Spring 1988).
- \_\_\_\_\_. Definition and Evaluation of the Bear Creek Mining District, Carbon County, Montana. Report prepared for the Montana Department of State Lands (November 1993).
- Axline, Jon. Cultural Resource Inventory and Evaluation: Bearcreek – East & West [S-RS 308-1(1)8]. Report prepared for the Montana Department of Highways (March 1991).
- \_\_\_\_\_. "Something of a Nuisance Value:" The Montana, Wyoming & Southern Railroad, 1905-1953." *Montana The Magazine of Western History* 49:4 (Winter 1999).
- Babcock, Albert L. *An Illustrated History of the Yellowstone Valley*. (Spokane: Western Historical Publishing, 1907).
- Bear Facts, 1934-1947*. Carbon County Historical Society. Red Lodge, Montana.
- Brooke, William M. "A Context over Land: Nineteenth Century Crow-White Relations." *Montana Vistas Selected Historical Essays*, Robert R. Swartout, Jr., ed. (Washington, DC: University Press of America, Inc., 1981).
- Butler, T. E. *Carbon County, Montana: Its Resources and Its Future*. Holiday Supplement to the Republican Picket (Red Lodge: Republican Picket, 1909)
- Cenis, Bill. *From Belgium to Bearcreek: The Story of Edouard and Sidonie Cenis*. (Privately Published, 2007).
- Chadwick, Robert A. "Coal: Montana's Prosaic Treasure." *Montana The Magazine of Western History*. 23: 4 (Autumn 1973).
- Cheney, Roberta Carkeek. *Names on the Face of Montana: The Story of Montana's Place Names*. (Missoula: Mountain Press Publishing, 1990).
- Federal Writers' Project. *Montana: A State Guide Book*. (Helena: Department of Agriculture, Labor, and Industry, 1939).
- "G.T. Lamport Dies Aged 73." *The Billings Gazette*, 12 February 1917.
- Gemmill, Mel and Edward Fenlason. *Murder by the Mountains: Murder in Carbon County, 1888-1929*. (East Helena: E & M Books, 2004).
- Interview of Bill Cenis by Jon Axline, 15 July 2010.
- Kappler, Charles J., ed and comp. *Indian Affairs: Laws and Treaties*. 2 Volumes. Washington, DC: Government Printing Office, 1904. Obtained at <http://digital.library.okstate.edu/kappler>.
- Kuhlman, Faye. "They've Spent Years on Their Knees." *The Billings Gazette*, 3 May 1964.
- \_\_\_\_\_. *Bearcreek, Montana*. (Bearcreek: Banner Press, 1972).

**United States Department of the Interior  
National Park Service**

**National Register of Historic Places Continuation Sheet**

Bearcreek Cemetery (24CB1250)

Name of Property

Carbon County, Montana

County and State

N/A

Name of multiple listing (if applicable)

Section number: Section 9

"Leopold Janskovitch: A Living History." *Montana Free Press*, February 1993.

"Leopold 'Poly' Janskovitch." *Carbon County News*, 15 October 1997.

Little Big Horn College. "Apsaalooke Writing Tribal Histories Project." Crow Agency, MT, obtained at <http://lib.lbhc.cc.mt.us/history>.

Malone, Michael P., Richard B. Roeder, and William L. Lang. *Montana: A History of Two Centuries*. Rev. Ed. (Seattle: University of Washington Press, 1991).

"Memorial Rites Conducted For Mine Disaster Dead." *Carbon County News*, 1 March 1945.

"Memorial Services Held For Mine Disaster Dead." *Carbon County News*, 2 March 1944.

Moulton, Gary E., ed. *The Definitive Journals of Lewis & Clark*. Seven volumes (Lincoln: University of Nebraska Press, 2002).

McNeish, Jeffrey E. *Long March Toward Tragedy: Events Surrounding Montana's Smith Mine Number3 Disaster*. (Billings: The Author, 2007).

\_\_\_\_. *Quiet Courage: Media Accounts of Montana's Smith Mine Number3 Disaster*. (Billings: The Author, 2007).

\_\_\_\_. *Sons of America, Brothers Underground: Remembering the Victim's of Smith Mine Number3*. (Billings: The Author, 2007).

McNeish, Jeff and the Carbon County Historical Society. *Bear Creek Valley*. Images of America Series (Charleston, South Carolina: Arcadia Publishing, 2009).

"Memorials Erected at Bearcreek and Red Lodge Cemeteries." *Carbon County News*, 30 May 1947.

*Montana Resources and Opportunities*. (Helena: Montana Department of Agriculture, Labor, and Industry, 1926).

*Montana Resources and Opportunities*. (Helena: Montana Department of Agriculture, Labor, and Industry, 1928).

Mullan, Pierce and Michael L. Nelson. "Montanans and 'the Most Peculiar Disease': The Influenza Epidemic and Public Health, 1918-1919." *Montana The Magazine of Western History*. 37:2 (Spring 1987).

*Progressive Men of the State of Montana*. (Chicago: A.W. Bowen & Co., c. 1903).

Resnick, Susan Kushner. *Goodbye Wives and Daughters: The Explosion of an American Town*. (Lincoln: University of Nebraska Press, 2010).

Smith, Burton. "Politics and the Crow Indian Land Cessions, 1831-1904." *Montana The Magazine of Western History* 36 (Autumn 1986).

Stott, Annette. *Pioneer Cemeteries: Sculpture Gardens of the Old West*. (Lincoln: University of Nebraska Press, 2008).

Taylor, Bill and Jan. *The Northern Pacific's Rails to Gold and Silver: Volume II, 1888-1898*. (Missoula: Pictorial Histories, 2008).

**United States Department of the Interior  
National Park Service**

**National Register of Historic Places Continuation Sheet**

Bearcreek Cemetery (24CB1250)

Name of Property

Carbon County, Montana

County and State

N/A

Name of multiple listing (if applicable)

Section number: Section 9

"Third Anniversary Disaster Memorial is Held." *Carbon County News*, 27 February 1946.

Tweedie, William. Interview with Laurie Mercier, 1982, Oral History Interview 222, Montana Historical Society Research Center, Helena, MT.

United States Census Records: Carbon County, Montana, 1900-1930. Viewed at [www.ancestry.com](http://www.ancestry.com).

United States Department of the Interior. Bureau of Land Management. General Land survey map and notes, T8S R21E, microfiche, Records Room, Montana Bureau of Land Management State Office, Billings, MT.

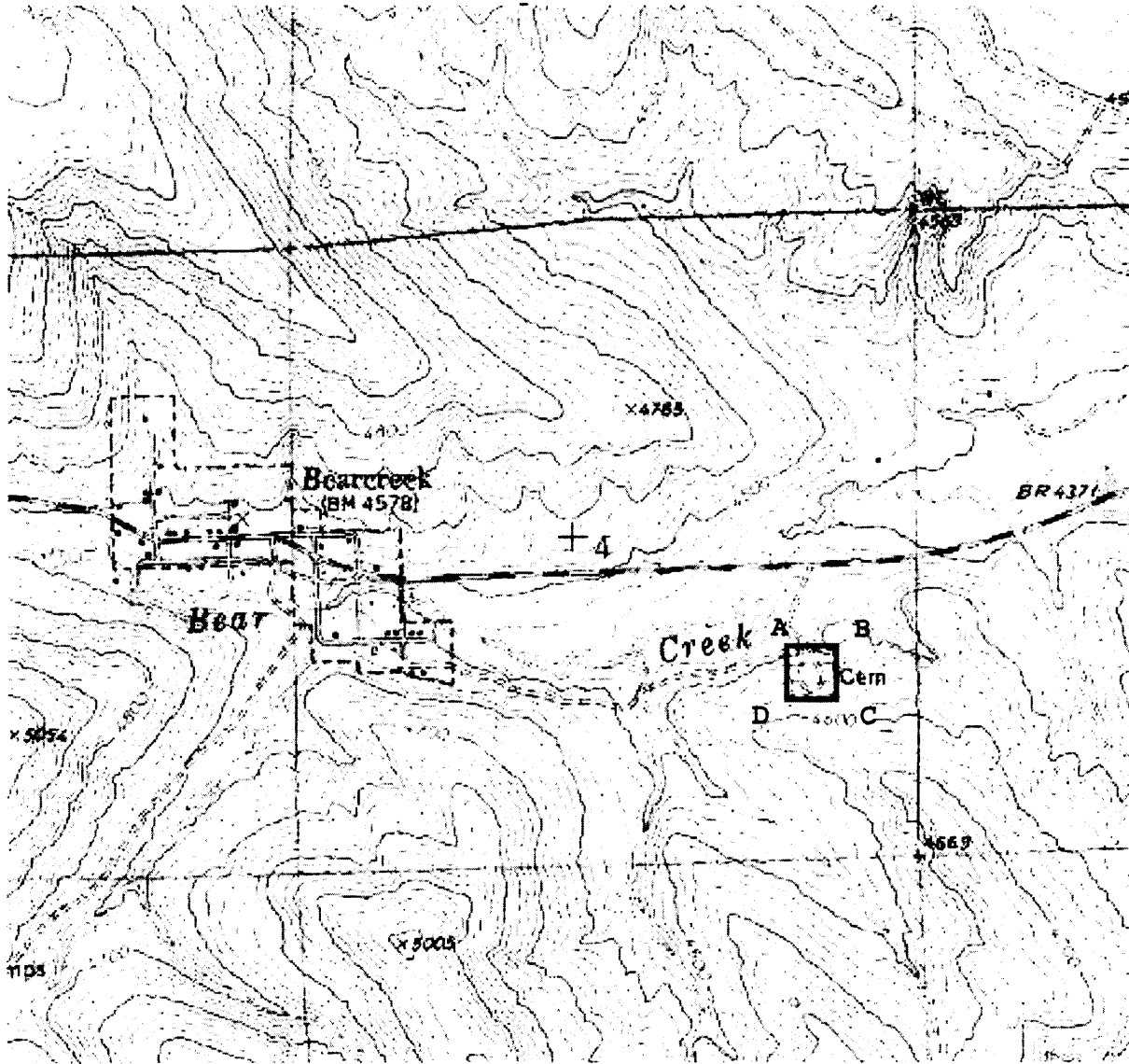
Zupan, Shirley and Harry C. Owens. *Red Lodge: Saga of a Western Area*. (Red Lodge: Carbon County Historical Society, 1979).

United States Department of the Interior  
National Park Service

National Register of Historic Places Continuation Sheet

Bearcreek Cemetery (24CB1250)
Name of Property
Carbon County, Montana
County and State
N/A
Name of multiple listing (if applicable)

Section number: Section 10 Maps



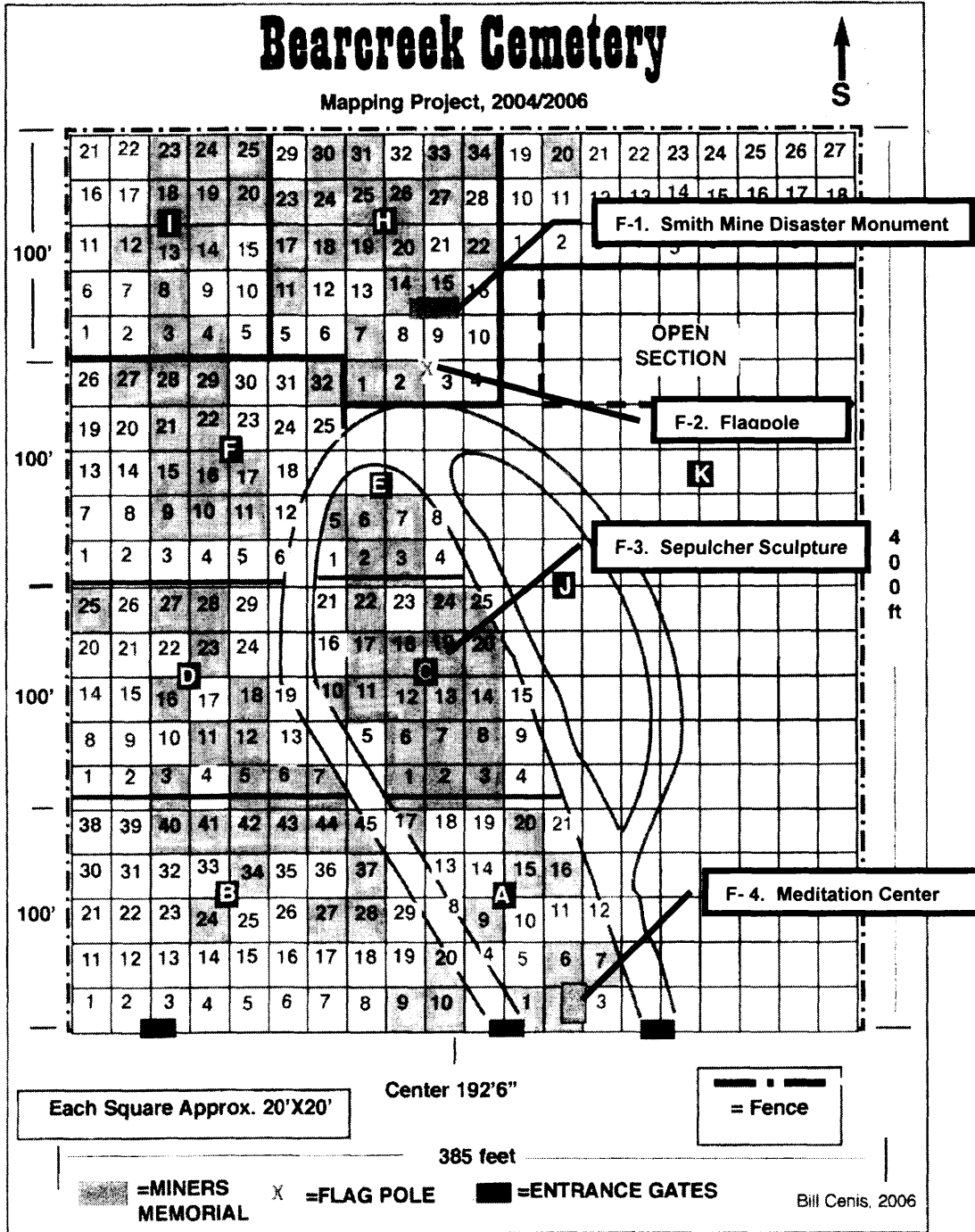
Bearcreek Cemetery (24CB1250). Red Lodge East USGS Quadrangle (1996)

United States Department of the Interior  
National Park Service

National Register of Historic Places Continuation Sheet

Bearcreek Cemetery (24CB1250)
Name of Property
Carbon County, Montana
County and State
N/A
Name of multiple listing (if applicable)

Section number: Section 10 Maps



Map showing location of known occupied burial plots and features discussed in nomination at Bearcreek Cemetery (24CB1250).

United States Department of the Interior  
National Park Service

National Register of Historic Places Continuation Sheet

Bearcreek Cemetery (24CB1250)

Name of Property

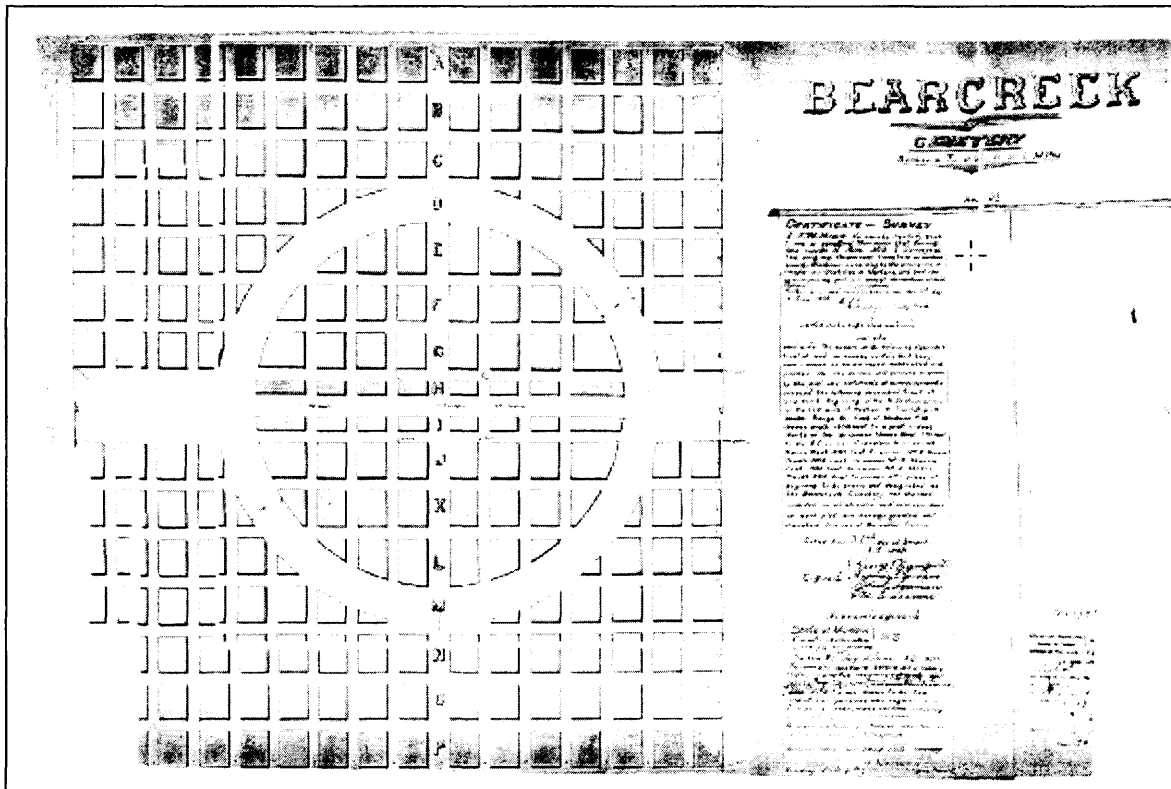
Carbon County, Montana

County and State

N/A

Name of multiple listing (if applicable)

Section number: Section 10 Maps



1909 plat by F. W. Hine of the Bearcreek Cemetery.  
Original on file at the Clerk and Records Office, Carbon County Courthouse, Red Lodge, Montana.

**United States Department of the Interior  
National Park Service**

**National Register of Historic Places Continuation Sheet**

Bearcreek Cemetery (24CB1250)

Name of Property

Carbon County, Montana

County and State

N/A

Name of multiple listing (if applicable)

Section number: Photographs

**Photograph Log**

Name: Bearcreek Cemetery (24CB1250)  
 County and State: Carbon County, Montana  
 Photographer: Jon Axline  
 Date of Photograph: March 2009  
 Location of original negative: Montana Department of Transportation. Helena, Montana.  
 Description and view of camera: Overview. View to the southeast.  
 Photograph: 0001  
 MT\_CarbonCounty\_BearcreekCemetery\_0001

Name: Bearcreek Cemetery (24CB1250)  
 County and State: Carbon County, Montana  
 Photographer: Jon Axline  
 Date of Photograph: March 2009  
 Location of original negative: Montana Department of Transportation. Helena, Montana.  
 Description and view of camera: Overview. View to the northeast.  
 Photograph: 0002  
 MT\_CarbonCounty\_BearcreekCemetery\_0002

Name: Bearcreek Cemetery (24CB1250)  
 County and State: Carbon County, Montana  
 Photographer: Jon Axline  
 Date of Photograph: March 2009  
 Location of original negative: Montana Department of Transportation. Helena, Montana.  
 Description and view of camera: Overview. View to the northeast.  
 Photograph: 0003  
 MT\_CarbonCounty\_BearcreekCemetery\_0003

Name: Bearcreek Cemetery (24CB1250)  
 County and State: Carbon County, Montana  
 Photographer: Jon Axline  
 Date of Photograph: March 2009  
 Location of original negative: Montana Department of Transportation. Helena, Montana.  
 Description and view of camera: Overview. View to the northwest.  
 Photograph: 0004  
 MT\_CarbonCounty\_BearcreekCemetery\_0004

Name: Bearcreek Cemetery (24CB1250)  
 County and State: Carbon County, Montana  
 Photographer: Jon Axline  
 Date of Photograph: March 2009  
 Location of original negative: Montana Department of Transportation. Helena, Montana.  
 Description and view of camera: Overview. View to the northwest.  
 Photograph: 0005  
 MT\_CarbonCounty\_BearcreekCemetery\_0005



**United States Department of the Interior  
National Park Service**

**National Register of Historic Places Continuation Sheet**

Bearcreek Cemetery (24CB1250)
Name of Property
Carbon County, Montana
County and State
N/A
Name of multiple listing (if applicable)

Section number: Photographs

Name: Bearcreek Cemetery (24CB1250)  
 County and State: Carbon County, Montana  
 Photographer: Jon Axline  
 Date of Photograph: March 2009  
 Location of original negative: Montana Department of Transportation. Helena, Montana.  
 Description and view of camera: Overview. View to the east-northeast  
 Photograph: 0006  
 MT\_CarbonCounty\_BearcreekCemetery\_0006

Name: Bearcreek Cemetery (24CB1250)  
 County and State: Carbon County, Montana  
 Photographer: Jon Axline  
 Date of Photograph: March 2009  
 Location of original negative: Montana Department of Transportation. Helena, Montana.  
 Description and view of camera: Overview. View to the southwest.  
 Photograph: 0007  
 MT\_CarbonCounty\_BearcreekCemetery\_0007

Name: Bearcreek Cemetery (24CB1250)  
 County and State: Carbon County, Montana  
 Photographer: Jon Axline  
 Date of Photograph: March 2009  
 Location of original negative: Montana Department of Transportation. Helena, Montana.  
 Description and view of camera: Overview. View to the east.  
 Photograph: 0008  
 MT\_CarbonCounty\_BearcreekCemetery\_0008

Name: Bearcreek Cemetery (24CB1250)  
 County and State: Carbon County, Montana  
 Photographer: Jon Axline  
 Date of Photograph: March 2009  
 Location of original negative: Montana Department of Transportation. Helena, Montana.  
 Description and view of camera: Overview. View to the northwest.  
 Photograph: 0009  
 MT\_CarbonCounty\_BearcreekCemetery\_0009

Name: Bearcreek Cemetery (24CB1250)  
 County and State: Carbon County, Montana  
 Photographer: Jon Axline  
 Date of Photograph: March 2009  
 Location of original negative: Montana Department of Transportation. Helena, Montana.  
 Description and view of camera: Overview. View to the northwest.  
 Photograph: 0010  
 MT\_CarbonCounty\_BearcreekCemetery\_0010

**United States Department of the Interior  
National Park Service**

**National Register of Historic Places Continuation Sheet**

Bearcreek Cemetery (24CB1250)

Name of Property

Carbon County, Montana

County and State

N/A

Name of multiple listing (if applicable)

Section number: Photographs

Name: Bearcreek Cemetery (24CB1250)  
 County and State: Carbon County, Montana  
 Photographer: Jon Axline  
 Date of Photograph: July 2010  
 Location of original negative: Montana Department of Transportation. Helena, Montana.  
 Description and view of camera: Overview showing concrete grave guards. View to the northeast  
 Photograph: 0011  
 MT\_CarbonCounty\_BearcreekCemetery\_0011

Name: Bearcreek Cemetery (24CB1250)  
 County and State: Carbon County, Montana  
 Photographer: Jon Axline  
 Date of Photograph: July 2010  
 Location of original negative: Montana Department of Transportation. Helena, Montana.  
 Description and view of camera: Overview. View to the southeast.  
 Photograph: 0012  
 MT\_CarbonCounty\_BearcreekCemetery\_0012

Name: Bearcreek Cemetery (24CB1250)  
 County and State: Carbon County, Montana  
 Photographer: Jon Axline  
 Date of Photograph: March 2010  
 Location of original negative: Montana Department of Transportation. Helena, Montana.  
 Description and view of camera: Overview. View to the east-southeast.  
 Photograph: 0013  
 MT\_CarbonCounty\_BearcreekCemetery\_0013

Name: Bearcreek Cemetery (24CB1250)  
 County and State: Carbon County, Montana  
 Photographer: Jon Axline  
 Date of Photograph: July 2010  
 Location of original negative: Montana Department of Transportation. Helena, Montana.  
 Description and view of camera: Overview. View to the south-southeast.  
 Photograph: 0014  
 MT\_CarbonCounty\_BearcreekCemetery\_0014

Name: Bearcreek Cemetery (24CB1250)  
 County and State: Carbon County, Montana  
 Photographer: Jon Axline  
 Date of Photograph: July 2010  
 Location of original negative: Montana Department of Transportation. Helena, Montana.  
 Description and view of camera: Overview. View to the north.  
 Photograph: 0015  
 MT\_CarbonCounty\_BearcreekCemetery\_0015

**United States Department of the Interior  
National Park Service**

**National Register of Historic Places Continuation Sheet**

Bearcreek Cemetery (24CB1250)

Name of Property

Carbon County, Montana

County and State

N/A

Name of multiple listing (if applicable)

Section number: Photographs

Name: Bearcreek Cemetery (24CB1250)  
 County and State: Carbon County, Montana  
 Photographer: Jon Axline  
 Date of Photograph: July 2010  
 Location of original negative: Montana Department of Transportation. Helena, Montana.  
 Description and view of camera: Overview. View to the south  
 Photograph: 0016  
 MT\_CarbonCounty\_BearcreekCemetery\_0016

Name: Bearcreek Cemetery (24CB1250)  
 County and State: Carbon County, Montana  
 Photographer: Jon Axline  
 Date of Photograph: July 2010  
 Location of original negative: Montana Department of Transportation. Helena, Montana.  
 Description and view of camera: Overview showing grave guards and fence types. View to the northwest.  
 Photograph: 0017  
 MT\_CarbonCounty\_BearcreekCemetery\_0017

Name: Bearcreek Cemetery (24CB1250)  
 County and State: Carbon County, Montana  
 Photographer: Jon Axliner  
 Date of Photograph: March 2010  
 Location of original negative: Montana Department of Transportation. Helena, Montana.  
 Description and view of camera: Overview. View to the south  
 Photograph: 00018  
 MT\_CarbonCounty\_BearcreekCemetery\_0018

Name: Bearcreek Cemetery (24CB1250)  
 County and State: Carbon County, Montana  
 Photographer: Jon Axline  
 Date of Photograph: July 2010  
 Location of original negative: Montana Department of Transportation. Helena, Montana.  
 Description and view of camera: Overview showing concrete grave guards. View to the north  
 Photograph: 0019  
 MT\_CarbonCounty\_BearcreekCemetery\_0019

Name: Bearcreek Cemetery (24CB1250)  
 County and State: Carbon County, Montana  
 Photographer: Jon Axline  
 Date of Photograph: March 2009  
 Location of original negative: Montana Department of Transportation. Helena, Montana.  
 Description and view of camera: Meditation Center. View to the north.  
 Photograph: 0020  
 MT\_CarbonCounty\_BearcreekCemetery\_0020

**United States Department of the Interior  
National Park Service**

**National Register of Historic Places Continuation Sheet**

Bearcreek Cemetery (24CB1250)

Name of Property

Carbon County, Montana

County and State

N/A

Name of multiple listing (if applicable)

Section number: Photographs

Name: Bearcreek Cemetery (24CB1250)  
 County and State: Carbon County, Montana  
 Photographer: Jon Axline  
 Date of Photograph: August 2010  
 Location of original negative: Montana Department of Transportation. Helena, Montana.  
 Description and view of camera: Meditation Center. View to the south  
 Photograph: 0021  
 MT\_CarbonCounty\_BearcreekCemetery\_0021

Name: Bearcreek Cemetery (24CB1250)  
 County and State: Carbon County, Montana  
 Photographer: Jon Axline  
 Date of Photograph: July 2010  
 Location of original negative: Montana Department of Transportation. Helena, Montana.  
 Description and view of camera: Smith Mine Disaster Monument. View to the southeast.  
 Photograph: 0022  
 MT\_CarbonCounty\_BearcreekCemetery\_0022

Name: Bearcreek Cemetery (24CB1250)  
 County and State: Carbon County, Montana  
 Photographer: Jon Axline  
 Date of Photograph: July 2010  
 Location of original negative: Montana Department of Transportation. Helena, Montana.  
 Description and view of camera: Smith Mine Disaster Monument. View to the southwest  
 Photograph: 0023  
 MT\_CarbonCounty\_BearcreekCemetery\_0023

Name: Bearcreek Cemetery (24CB1250)  
 County and State: Carbon County, Montana  
 Photographer: Jon Axline  
 Date of Photograph: March 2009  
 Location of original negative: Montana Department of Transportation. Helena, Montana.  
 Description and view of camera: Smith Mine Disaster Monument. View to the southeast  
 Photograph: 0024  
 MT\_CarbonCounty\_BearcreekCemetery\_0024

Name: Bearcreek Cemetery (24CB1250)  
 County and State: Carbon County, Montana  
 Photographer: Kate Axline  
 Date of Photograph: July 2010  
 Location of original negative: Montana Department of Transportation. Helena, Montana.  
 Description and view of camera: Smith Mine Disaster Monument. View to the south.  
 Photograph: 0025  
 MT\_CarbonCounty\_BearcreekCemetery\_0025

**United States Department of the Interior  
National Park Service**

**National Register of Historic Places Continuation Sheet**

Bearcreek Cemetery (24CB1250)

Name of Property

Carbon County, Montana

County and State

N/A

Name of multiple listing (if applicable)

Section number: Photographs

Name: Bearcreek Cemetery (24CB1250)  
 County and State: Carbon County, Montana  
 Photographer: Jon Axline  
 Date of Photograph: June 2010  
 Location of original negative: Montana Department of Transportation. Helena, Montana.  
 Description and view of camera: Flaggpole. View to the southeast  
 Photograph: 0026  
 MT\_CarbonCounty\_BearcreekCemetery\_0026

Name: Bearcreek Cemetery (24CB1250)  
 County and State: Carbon County, Montana  
 Photographer: Jon Axline  
 Date of Photograph: March 2009  
 Location of original negative: Montana Department of Transportation. Helena, Montana.  
 Description and view of camera: Cenis Family Plot. View to the northwest.  
 Photograph: 0027  
 MT\_CarbonCounty\_BearcreekCemetery\_0027

Name: Bearcreek Cemetery (24CB1250)  
 County and State: Carbon County, Montana  
 Photographer: Jon Axline  
 Date of Photograph: August 2010  
 Location of original negative: Montana Department of Transportation. Helena, Montana.  
 Description and view of camera: Cenis Family Plot. View to the west  
 Photograph: 0028  
 MT\_CarbonCounty\_BearcreekCemetery\_0028

Name: Bearcreek Cemetery (24CB1250)  
 County and State: Carbon County, Montana  
 Photographer: Jon Axline  
 Date of Photograph: August 2010  
 Location of original negative: Montana Department of Transportation. Helena, Montana.  
 Description and view of camera: Cenis Family Plot. View to the west  
 Photograph: 0029  
 MT\_CarbonCounty\_BearcreekCemetery\_0029

Name: Bearcreek Cemetery (24CB1250)  
 County and State: Carbon County, Montana  
 Photographer: Jon Axline  
 Date of Photograph: August 2010  
 Location of original negative: Montana Department of Transportation. Helena, Montana.  
 Description and view of camera: Cenis Family Plot. View to the west-northwest  
 Photograph: 0030  
 MT\_CarbonCounty\_BearcreekCemetery\_0030

**United States Department of the Interior  
National Park Service**

**National Register of Historic Places Continuation Sheet**

Bearcreek Cemetery (24CB1250)

Name of Property

Carbon County, Montana

County and State

N/A

Name of multiple listing (if applicable)

Section number: Photographs

Name: Bearcreek Cemetery (24CB1250)  
 County and State: Carbon County, Montana  
 Photographer: Jon Axline  
 Date of Photograph: July 2010  
 Location of original negative: Montana Department of Transportation. Helena, Montana.  
 Description and view of camera: Enclosed family plots. View to the southwest  
 Photograph: 0031  
 MT\_CarbonCounty\_BearcreekCemetery\_0031

Name: Bearcreek Cemetery (24CB1250)  
 County and State: Carbon County, Montana  
 Photographer: Jon Axline  
 Date of Photograph: July 2010  
 Location of original negative: Montana Department of Transportation. Helena, Montana.  
 Description and view of camera: Graves. View to the northwest.  
 Photograph: 0032  
 MT\_CarbonCounty\_BearcreekCemetery\_0032

Name: Bearcreek Cemetery (24CB1250)  
 County and State: Carbon County, Montana  
 Photographer: Kate Axline  
 Date of Photograph: July 2010  
 Location of original negative: Montana Department of Transportation. Helena, Montana.  
 Description and view of camera: Graves of two eastern European persons. View to the northwest.  
 Photograph: 00033  
 MT\_CarbonCounty\_BearcreekCemetery\_0033

Name: Bearcreek Cemetery (24CB1250)  
 County and State: Carbon County, Montana  
 Photographer: Kate Axline  
 Date of Photograph: July 2010  
 Location of original negative: Montana Department of Transportation. Helena, Montana.  
 Description and view of camera: Eastern European headstone with cameo photo. View to the west.  
 Photograph: 0034  
 MT\_CarbonCounty\_BearcreekCemetery\_0034

Name: Bearcreek Cemetery (24CB1250)  
 County and State: Carbon County, Montana  
 Photographer: Kate Axline  
 Date of Photograph: July 2010  
 Location of original negative: Montana Department of Transportation. Helena, Montana.  
 Description and view of camera: Eastern European headstone with cameo photo. View to the west  
 Photograph: 0035  
 MT\_CarbonCounty\_BearcreekCemetery\_0035

**United States Department of the Interior  
National Park Service**

**National Register of Historic Places Continuation Sheet**

Bearcreek Cemetery (24CB1250)

Name of Property

Carbon County, Montana

County and State

N/A

Name of multiple listing (if applicable)

Section number: Photographs

Name: Bearcreek Cemetery (24CB1250)  
 County and State: Carbon County, Montana  
 Photographer: Kate Axline  
 Date of Photograph: July 2010  
 Location of original negative: Montana Department of Transportation. Helena, Montana.  
 Description and view of camera: Headstone of Andrew Lubarda (1891-1922). View to the west.  
 Photograph: 0036  
 MT\_CarbonCounty\_BearcreekCemetery\_0036

Name: Bearcreek Cemetery (24CB1250)  
 County and State: Carbon County, Montana  
 Photographer: Kate Axline  
 Date of Photograph: July 2010  
 Location of original negative: Montana Department of Transportation. Helena, Montana.  
 Description and view of camera: Eastern European headstone with cameo photo. View to the west  
 Photograph: 0037  
 MT\_CarbonCounty\_BearcreekCemetery\_0037

Name: Bearcreek Cemetery (24CB1250)  
 County and State: Carbon County, Montana  
 Photographer: Jon Axline  
 Date of Photograph: March 2009  
 Location of original negative: Montana Department of Transportation. Helena, Montana.  
 Description and view of camera: Obelisk headstone. View to the northwest.  
 Photograph: 00038  
 MT\_CarbonCounty\_BearcreekCemetery\_0038

Name: Bearcreek Cemetery (24CB1250)  
 County and State: Carbon County, Montana  
 Photographer: Jon Axline  
 Date of Photograph: March 2009  
 Location of original negative: Montana Department of Transportation. Helena, Montana.  
 Description and view of camera: Eastern European headstone with cameo photos. View to the west.  
 Photograph: 0039  
 MT\_CarbonCounty\_BearcreekCemetery\_0039

Name: Bearcreek Cemetery (24CB1250)  
 County and State: Carbon County, Montana  
 Photographer: Jon Axline  
 Date of Photograph: March 2009  
 Location of original negative: Montana Department of Transportation. Helena, Montana.  
 Description and view of camera: Headstone of Tommy Lukich (1933-1936). View to the west  
 Photograph: 0040  
 MT\_CarbonCounty\_BearcreekCemetery\_0040

**United States Department of the Interior  
National Park Service**

**National Register of Historic Places Continuation Sheet**

Bearcreek Cemetery (24CB1250)

Name of Property

Carbon County, Montana

County and State

N/A

Name of multiple listing (if applicable)

Section number: Photographs

Name: Bearcreek Cemetery (24CB1250)  
 County and State: Carbon County, Montana  
 Photographer: Jon Axline  
 Date of Photograph: March 2009  
 Location of original negative: Montana Department of Transportation. Helena, Montana.  
 Description and view of camera: Fenced plot of Iliya Popovich (1916-1919). View to the southwest.  
 Photograph: 0041  
 MT\_CarbonCounty\_BearcreekCemetery\_0041

Name: Bearcreek Cemetery (24CB1250)  
 County and State: Carbon County, Montana  
 Photographer: Jon Axline  
 Date of Photograph: March 2009  
 Location of original negative: Montana Department of Transportation. Helena, Montana.  
 Description and view of camera: Headstone of Iliya Popovich. View to the west.  
 Photograph: 0042  
 MT\_CarbonCounty\_BearcreekCemetery\_0042

Name: Bearcreek Cemetery (24CB1250)  
 County and State: Carbon County, Montana  
 Photographer: Jon Axline  
 Date of Photograph: March 2009  
 Location of original negative: Montana Department of Transportation. Helena, Montana.  
 Description and view of camera: Headstone of Harold Sasich (1916-1917). View to the west.  
 Photograph: 00043  
 MT\_CarbonCounty\_BearcreekCemetery\_0043

Name: Bearcreek Cemetery (24CB1250)  
 County and State: Carbon County, Montana  
 Photographer: Jon Axline  
 Date of Photograph: March 2009  
 Location of original negative: Montana Department of Transportation. Helena, Montana.  
 Description and view of camera: Headstone of Violet Virginia Thomas (1917-1919). View to the west.  
 Photograph: 0044  
 MT\_CarbonCounty\_BearcreekCemetery\_0044

Name: Bearcreek Cemetery (24CB1250)  
 County and State: Carbon County, Montana  
 Photographer: Jon Axline  
 Date of Photograph: March 2009  
 Location of original negative: Montana Department of Transportation. Helena, Montana.  
 Description and view of camera: Unknown. Bearcreek Aerie No. 2032, F.O.E. View to the east  
 Photograph: 0045  
 MT\_CarbonCounty\_BearcreekCemetery\_0045



**United States Department of the Interior  
National Park Service**

**National Register of Historic Places Continuation Sheet**

Bearcreek Cemetery (24CB1250)

Name of Property

Carbon County, Montana

County and State

N/A

Name of multiple listing (if applicable)

Section number: Photographs

Name: Bearcreek Cemetery (24CB1250)  
 County and State: Carbon County, Montana  
 Photographer: Jon Axline  
 Date of Photograph: March 2009  
 Location of original negative: Montana Department of Transportation. Helena, Montana.  
 Description and view of camera: Unknown. Fraternal Order of Eagles grave marker. View to the east.  
 Photograph: 0046  
 MT\_CarbonCounty\_BearcreekCemetery\_0046

Name: Bearcreek Cemetery (24CB1250)  
 County and State: Carbon County, Montana  
 Photographer: Jon Axline  
 Date of Photograph: July 2010  
 Location of original negative: Montana Department of Transportation. Helena, Montana.  
 Description and view of camera: Unknown grave. View to the southeast.  
 Photograph: 0047  
 MT\_CarbonCounty\_BearcreekCemetery\_0047

Name: Bearcreek Cemetery (24CB1250)  
 County and State: Carbon County, Montana  
 Photographer: Jon Axline  
 Date of Photograph: March 2009  
 Location of original negative: Montana Department of Transportation. Helena, Montana.  
 Description and view of camera: Unknown grave. View to the west.  
 Photograph: 00048  
 MT\_CarbonCounty\_BearcreekCemetery\_0048

Name: Bearcreek Cemetery (24CB1250)  
 County and State: Carbon County, Montana  
 Photographer: Kate Axline  
 Date of Photograph: July 2010  
 Location of original negative: Montana Department of Transportation. Helena, Montana.  
 Description and view of camera: Marble headstone. View to the north.  
 Photograph: 0049  
 MT\_CarbonCounty\_BearcreekCemetery\_0049

Name: Bearcreek Cemetery (24CB1250)  
 County and State: Carbon County, Montana  
 Photographer: Jon Axline  
 Date of Photograph: March 2009  
 Location of original negative: Montana Department of Transportation. Helena, Montana.  
 Description and view of camera: Annie Mourich, Wife of Blaz Planinsek (1894-1924). View to the west  
 Photograph: 0050  
 MT\_CarbonCounty\_BearcreekCemetery\_0050

**United States Department of the Interior  
National Park Service**

**National Register of Historic Places Continuation Sheet**

Bearcreek Cemetery (24CB1250)

Name of Property

Carbon County, Montana

County and State

N/A

Name of multiple listing (if applicable)

Section number: Photographs

Name: Bearcreek Cemetery (24CB1250)  
 County and State: Carbon County, Montana  
 Photographer: Jon Axline  
 Date of Photograph: March 2009  
 Location of original negative: Montana Department of Transportation. Helena, Montana.  
 Description and view of camera: Headstone with cameo photo of Andrew Ugaste (1886-1919). View to the west.  
 Photograph: 0051  
 MT\_CarbonCounty\_BearcreekCemetery\_0051

Name: Bearcreek Cemetery (24CB1250)  
 County and State: Carbon County, Montana  
 Photographer: Kate Axline  
 Date of Photograph: July 2010  
 Location of original negative: Montana Department of Transportation. Helena, Montana.  
 Description and view of camera: Unknown grave. View to the west.  
 Photograph: 0052  
 MT\_CarbonCounty\_BearcreekCemetery\_0052

Name: Bearcreek Cemetery (24CB1250)  
 County and State: Carbon County, Montana  
 Photographer: Kate Axline  
 Date of Photograph: July 2010  
 Location of original negative: Montana Department of Transportation. Helena, Montana.  
 Description and view of camera: Toppled headstone of Roza Cernik (1881-1917). View to the southwest.  
 Photograph: 0053  
 MT\_CarbonCounty\_BearcreekCemetery\_0053

Name: Bearcreek Cemetery (24CB1250)  
 County and State: Carbon County, Montana  
 Photographer: Kate Axline  
 Date of Photograph: July 2010  
 Location of original negative: Montana Department of Transportation. Helena, Montana.  
 Description and view of camera: Headstone of Andrew Marinchek (1914-1918). View to the west.  
 Photograph: 0054  
 MT\_CarbonCounty\_BearcreekCemetery\_0054

Name: Bearcreek Cemetery (24CB1250)  
 County and State: Carbon County, Montana  
 Photographer: Jon Axline  
 Date of Photograph: March 2009  
 Location of original negative: Montana Department of Transportation. Helena, Montana.  
 Description and view of camera: Headstone of August Louis Deruelle, a victim of the Smith Mine Disaster. View to the west.  
 Photograph: 0055  
 MT\_CarbonCounty\_BearcreekCemetery\_0055

**United States Department of the Interior  
National Park Service**

**National Register of Historic Places Continuation Sheet**

Bearcreek Cemetery (24CB1250)
Name of Property
Carbon County, Montana
County and State
N/A
Name of multiple listing (if applicable)

Section number: Photographs

Name: Bearcreek Cemetery (24CB1250)  
 County and State: Carbon County, Montana  
 Photographer: Jon Axline  
 Date of Photograph: March 2009  
 Location of original negative: Montana Department of Transportation. Helena, Montana.  
 Description and view of camera: Marble headstone with sandstone headstones in background. View to the west-northwest.  
 Photograph: 0056  
 MT\_CarbonCounty\_BearcreekCemetery\_0056

Name: Bearcreek Cemetery (24CB1250)  
 County and State: Carbon County, Montana  
 Photographer: Jon Axline  
 Date of Photograph: March 2009  
 Location of original negative: Montana Department of Transportation. Helena, Montana.  
 Description and view of camera: Marble lamb motif marking Zorka Pekovich's grave. View to the west.  
 Photograph: 0057  
 MT\_CarbonCounty\_BearcreekCemetery\_0057

**United States Department of the Interior  
National Park Service**

**National Register of Historic Places Continuation Sheet**

Bearcreek Cemetery (24CB1250)

Name of Property

Carbon County, Montana

County and State

N/A

Name of multiple listing (if applicable)

Section number: Photographs



Name: Bearcreek Cemetery (24CB1250)  
 County and State: Carbon County, Montana  
 Photographer: Jon Axline  
 Date of Photograph: March 2009  
 Location of original negative: Montana Department of Transportation. Helena, Montana.  
 Description and view of camera: Overview. View to the southeast.  
 Photograph: 0001  
 MT\_CarbonCounty\_BearcreekCemetery\_0001

United States Department of the Interior  
National Park Service

National Register of Historic Places Continuation Sheet

Section number: Photographs

Bearcreek Cemetery (24CB1250)

Name of Property

Carbon County, Montana

County and State

N/A

Name of multiple listing (if applicable)



Name: Bearcreek Cemetery (24CB1250)  
 County and State: Carbon County, Montana  
 Photographer: Jon Axline  
 Date of Photograph: March 2009  
 Location of original negative: Montana Department of Transportation. Helena, Montana.  
 Description and view of camera: Overview. View to the northeast.  
 Photograph: 0002  
 MT\_CarbonCounty\_BearcreekCemetery\_0002

**United States Department of the Interior  
National Park Service**

**National Register of Historic Places Continuation Sheet**

<i>Bearcreek Cemetery (24CB1250)</i>
Name of Property
Carbon County, Montana
County and State
N/A
Name of multiple listing (if applicable)

Section number: Photographs



Name: Bearcreek Cemetery (24CB1250)  
 County and State: Carbon County, Montana  
 Photographer: Jon Axline  
 Date of Photograph: March 2009  
 Location of original negative: Montana Department of Transportation. Helena, Montana.  
 Description and view of camera: Overview. View to the northeast.  
 Photograph: 0003  
 MT\_CarbonCounty\_BearcreekCemetery\_0003

**United States Department of the Interior  
National Park Service**

**National Register of Historic Places Continuation Sheet**

Bearcreek Cemetery (24CB1250)

Name of Property

Carbon County, Montana

County and State

N/A

Name of multiple listing (if applicable)

Section number: Photographs



Name: Bearcreek Cemetery (24CB1250)  
 County and State: Carbon County, Montana  
 Photographer: Jon Axline  
 Date of Photograph: March 2009  
 Location of original negative: Montana Department of Transportation. Helena, Montana.  
 Description and view of camera: Overview. View to the northwest.  
 Photograph: 0004  
 MT\_CarbonCounty\_BearcreekCemetery\_0004

United States Department of the Interior  
National Park Service

National Register of Historic Places Continuation Sheet

Bearcreek Cemetery (24CB1250)

Name of Property

Carbon County, Montana

County and State

N/A

Name of multiple listing (if applicable)

Section number: Photographs



Name: Bearcreek Cemetery (24CB1250)  
 County and State: Carbon County, Montana  
 Photographer: Jon Axline  
 Date of Photograph: March 2009  
 Location of original negative: Montana Department of Transportation. Helena, Montana.  
 Description and view of camera: Overview. View to the northwest.  
 Photograph: 0005  
 MT\_CarbonCounty\_BearcreekCemetery\_0005



**United States Department of the Interior  
National Park Service**

**National Register of Historic Places Continuation Sheet**

Bearcreek Cemetery (24CB1250)
Name of Property
Carbon County, Montana
County and State
N/A
Name of multiple listing (if applicable)

Section number: Photographs



Name: Bearcreek Cemetery (24CB1250)  
 County and State: Carbon County, Montana  
 Photographer: Jon Axline  
 Date of Photograph: March 2009  
 Location of original negative: Montana Department of Transportation. Helena, Montana.  
 Description and view of camera: Overview. View to the east-northeast  
 Photograph: 0006  
 MT\_CarbonCounty\_BearcreekCemetery\_0006

United States Department of the Interior  
National Park Service

National Register of Historic Places Continuation Sheet

Bearcreek Cemetery (24CB1250)

Name of Property

Carbon County, Montana

County and State

N/A

Name of multiple listing (if applicable)

Section number: Photographs



Name: Bearcreek Cemetery (24CB1250)  
 County and State: Carbon County, Montana  
 Photographer: Jon Axline  
 Date of Photograph: March 2009  
 Location of original negative: Montana Department of Transportation. Helena, Montana.  
 Description and view of camera: Overview. View to the southwest.  
 Photograph: 0007  
 MT\_CarbonCounty\_BearcreekCemetery\_0007

**United States Department of the Interior  
National Park Service**

**National Register of Historic Places Continuation Sheet**

Bearcreek Cemetery (24CB1250)
Name of Property
Carbon County, Montana
County and State
N/A
Name of multiple listing (if applicable)

Section number: Photographs



Name: Bearcreek Cemetery (24CB1250)  
 County and State: Carbon County, Montana  
 Photographer: Jon Axline  
 Date of Photograph: March 2009  
 Location of original negative: Montana Department of Transportation. Helena, Montana.  
 Description and view of camera: Overview. View to the east.  
 Photograph: 0008  
 MT\_CarbonCounty\_BearcreekCemetery\_0008

**United States Department of the Interior  
National Park Service**

**National Register of Historic Places Continuation Sheet**

Bearcreek Cemetery (24CB1250)
Name of Property
Carbon County, Montana
County and State
N/A
Name of multiple listing (if applicable)

Section number: Photographs



Name: Bearcreek Cemetery (24CB1250)  
 County and State: Carbon County, Montana  
 Photographer: Jon Axline  
 Date of Photograph: March 2009  
 Location of original negative: Montana Department of Transportation. Helena, Montana.  
 Description and view of camera: Overview. View to the northwest.  
 Photograph: 0009  
 MT\_CarbonCounty\_BearcreekCemetery\_0009

**United States Department of the Interior  
National Park Service**

**National Register of Historic Places Continuation Sheet**

Bearcreek Cemetery (24CB1250)
Name of Property
Carbon County, Montana
County and State
N/A
Name of multiple listing (if applicable)

Section number: Photographs



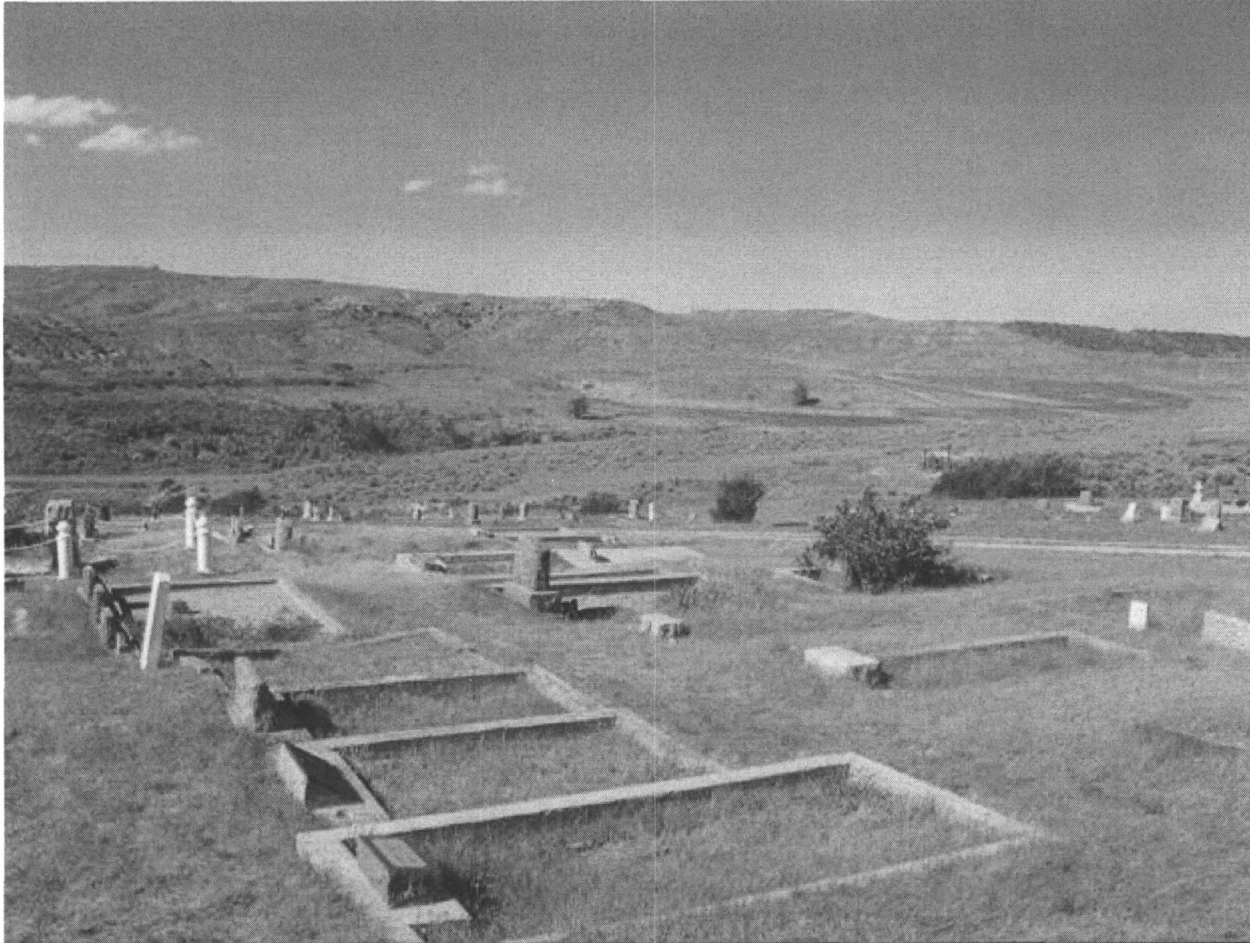
Name: Bearcreek Cemetery (24CB1250)  
 County and State: Carbon County, Montana  
 Photographer: Jon Axline  
 Date of Photograph: March 2009  
 Location of original negative: Montana Department of Transportation. Helena, Montana.  
 Description and view of camera: Overview. View to the northwest.  
 Photograph: 0010  
 MT\_CarbonCounty\_BearcreekCemetery\_0010

United States Department of the Interior  
National Park Service

National Register of Historic Places Continuation Sheet

Bearcreek Cemetery (24CB1250)
Name of Property
Carbon County, Montana
County and State
N/A
Name of multiple listing (if applicable)

Section number: Photographs



Name: Bearcreek Cemetery (24CB1250)  
 County and State: Carbon County, Montana  
 Photographer: Jon Axline  
 Date of Photograph: July 2010  
 Location of original negative: Montana Department of Transportation. Helena, Montana.  
 Description and view of camera: Overview showing concrete grave guards. View to the northeast  
 Photograph: 0011  
 MT\_CarbonCounty\_BearcreekCemetery\_0011

**United States Department of the Interior  
National Park Service**

**National Register of Historic Places Continuation Sheet**

Bearcreek Cemetery (24CB1250)

Name of Property  
Carbon County, Montana

County and State  
N/A

Name of multiple listing (if applicable)

Section number: Photographs



Name: Bearcreek Cemetery (24CB1250)  
County and State: Carbon County, Montana  
Photographer: Jon Axline  
Date of Photograph: July 2010  
Location of original negative: Montana Department of Transportation. Helena, Montana.  
Description and view of camera: Overview. View to the southeast.  
Photograph: 0012  
MT\_CarbonCounty\_BearcreekCemetery\_0012

**United States Department of the Interior  
National Park Service**

**National Register of Historic Places Continuation Sheet**

Bearcreek Cemetery (24CB1250)
Name of Property
Carbon County, Montana
County and State
N/A
Name of multiple listing (if applicable)

Section number: Photographs



Name: Bearcreek Cemetery (24CB1250)  
 County and State: Carbon County, Montana  
 Photographer: Jon Axline  
 Date of Photograph: March 2010  
 Location of original negative: Montana Department of Transportation. Helena, Montana.  
 Description and view of camera: Overview. View to the east-southeast.  
 Photograph: 00013  
 MT\_CarbonCounty\_BearcreekCemetery\_0013



**United States Department of the Interior  
National Park Service**

**National Register of Historic Places Continuation Sheet**

Bearcreek Cemetery (24CB1250)
Name of Property
Carbon County, Montana
County and State
N/A
Name of multiple listing (if applicable)

Section number: Photographs



Name: Bearcreek Cemetery (24CB1250)  
 County and State: Carbon County, Montana  
 Photographer: Jon Axline  
 Date of Photograph: July 2010  
 Location of original negative: Montana Department of Transportation. Helena, Montana.  
 Description and view of camera: Overview. View to the south-southeast.  
 Photograph: 0014  
 MT\_CarbonCounty\_BearcreekCemetery\_0014

**United States Department of the Interior  
National Park Service**

**National Register of Historic Places Continuation Sheet**

Bearcreek Cemetery (24CB1250)

Name of Property

Carbon County, Montana

County and State

N/A

Name of multiple listing (if applicable)

Section number: Photographs



Name: Bearcreek Cemetery (24CB1250)  
 County and State: Carbon County, Montana  
 Photographer: Jon Axline  
 Date of Photograph: July 2010  
 Location of original negative: Montana Department of Transportation. Helena, Montana.  
 Description and view of camera: Overview. View to the north.  
 Photograph: 0015  
 MT\_CarbonCounty\_BearcreekCemetery\_0015

**United States Department of the Interior  
National Park Service**

**National Register of Historic Places Continuation Sheet**

Bearcreek Cemetery (24CB1250)
Name of Property
Carbon County, Montana
County and State
N/A
Name of multiple listing (if applicable)

Section number: Photographs



Name: Bearcreek Cemetery (24CB1250)  
 County and State: Carbon County, Montana  
 Photographer: Jon Axline  
 Date of Photograph: July 2010  
 Location of original negative: Montana Department of Transportation. Helena, Montana.  
 Description and view of camera: Overview. View to the south  
 Photograph: 0016  
 MT\_CarbonCounty\_BearcreekCemetery\_0016

**United States Department of the Interior  
National Park Service**

**National Register of Historic Places Continuation Sheet**

Bearcreek Cemetery (24CB1250)

Name of Property

Carbon County, Montana

County and State

N/A

Name of multiple listing (if applicable)

Section number: Photographs



Name: Bearcreek Cemetery (24CB1250)  
 County and State: Carbon County, Montana  
 Photographer: Jon Axline  
 Date of Photograph: July 2010  
 Location of original negative: Montana Department of Transportation. Helena, Montana.  
 Description and view of camera: Overview showing grave guards and fence types. View to the northwest.  
 Photograph: 0017  
 MT\_CarbonCounty\_BearcreekCemetery\_0017

**United States Department of the Interior  
National Park Service**

**National Register of Historic Places Continuation Sheet**

Bearcreek Cemetery (24CB1250)
Name of Property
Carbon County, Montana
County and State
N/A
Name of multiple listing (if applicable)

Section number: Photographs



Name: Bearcreek Cemetery (24CB1250)  
 County and State: Carbon County, Montana  
 Photographer: Jon Axliner  
 Date of Photograph: March 2010  
 Location of original negative: Montana Department of Transportation. Helena, Montana.  
 Description and view of camera: Overview. View to the south  
 Photograph: 00018  
 MT\_CarbonCounty\_BearcreekCemetery\_0018

**United States Department of the Interior  
National Park Service**

**National Register of Historic Places Continuation Sheet**

Bearcreek Cemetery (24CB1250)
Name of Property
Carbon County, Montana
County and State
N/A
Name of multiple listing (if applicable)

Section number: Photographs



Name: Bearcreek Cemetery (24CB1250)  
 County and State: Carbon County, Montana  
 Photographer: Jon Axline  
 Date of Photograph: July 2010  
 Location of original negative: Montana Department of Transportation. Helena, Montana.  
 Description and view of camera: Overview showing concrete grave guards. View to the north  
 Photograph: 0019  
 MT\_CarbonCounty\_BearcreekCemetery\_0019

United States Department of the Interior  
National Park Service

National Register of Historic Places Continuation Sheet

Bearcreek Cemetery (24CB1250)

Name of Property

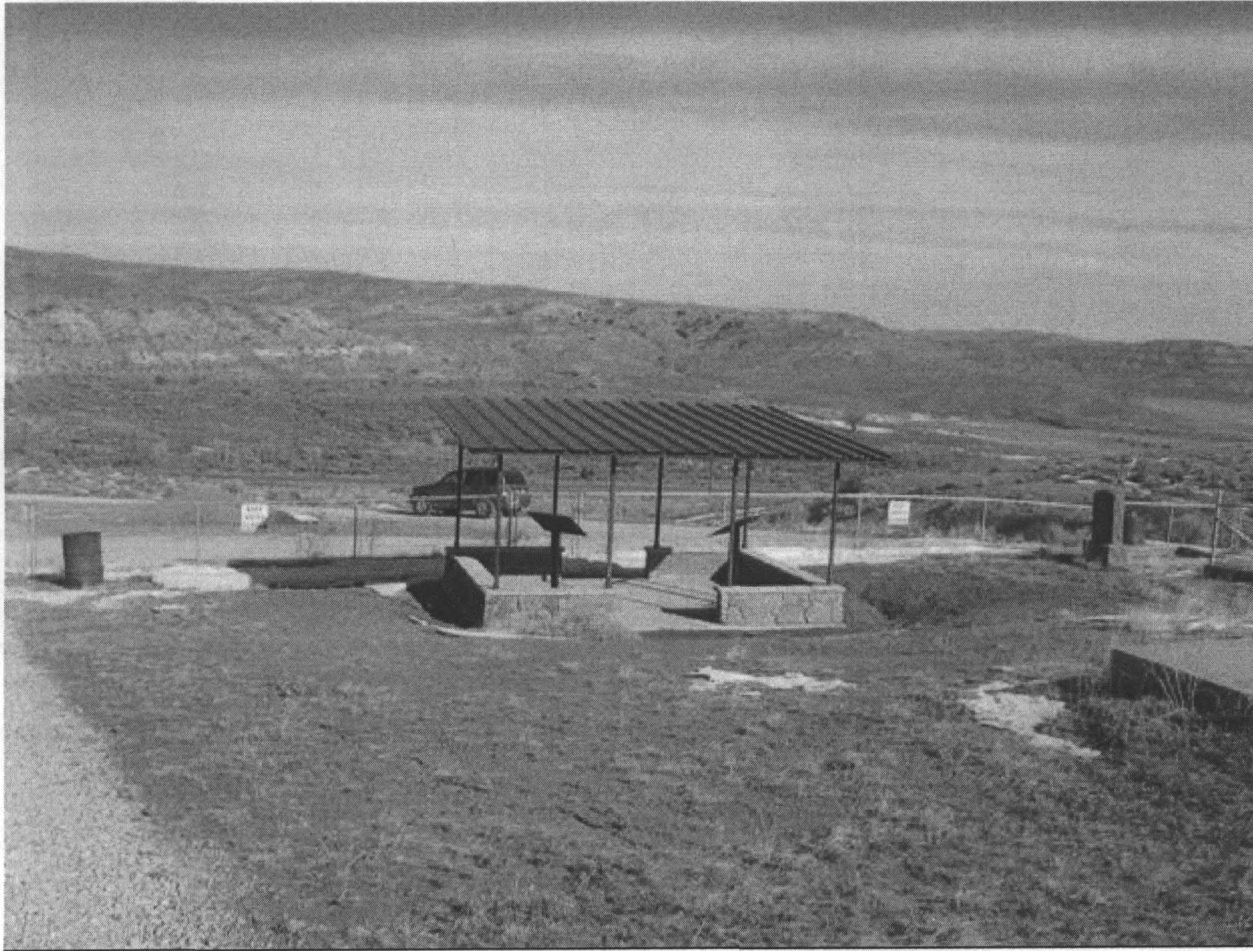
Carbon County, Montana

County and State

N/A

Name of multiple listing (if applicable)

Section number: Photographs



Name: Bearcreek Cemetery (24CB1250)  
 County and State: Carbon County, Montana  
 Photographer: Jon Axline  
 Date of Photograph: March 2009  
 Location of original negative: Montana Department of Transportation. Helena, Montana.  
 Description and view of camera: Meditation Center. View to the north.  
 Photograph: 0020  
 MT\_CarbonCounty\_BearcreekCemetery\_0020

United States Department of the Interior  
National Park Service

National Register of Historic Places Continuation Sheet

Bearcreek Cemetery (24CB1250)
Name of Property
Carbon County, Montana
County and State
N/A
Name of multiple listing (if applicable)

Section number: Photographs



Name: Bearcreek Cemetery (24CB1250)  
 County and State: Carbon County, Montana  
 Photographer: Jon Axline  
 Date of Photograph: August 2010  
 Location of original negative: Montana Department of Transportation. Helena, Montana.  
 Description and view of camera: Meditation Center. View to the south  
 Photograph: 0021  
 MT\_CarbonCounty\_BearcreekCemetery\_0021

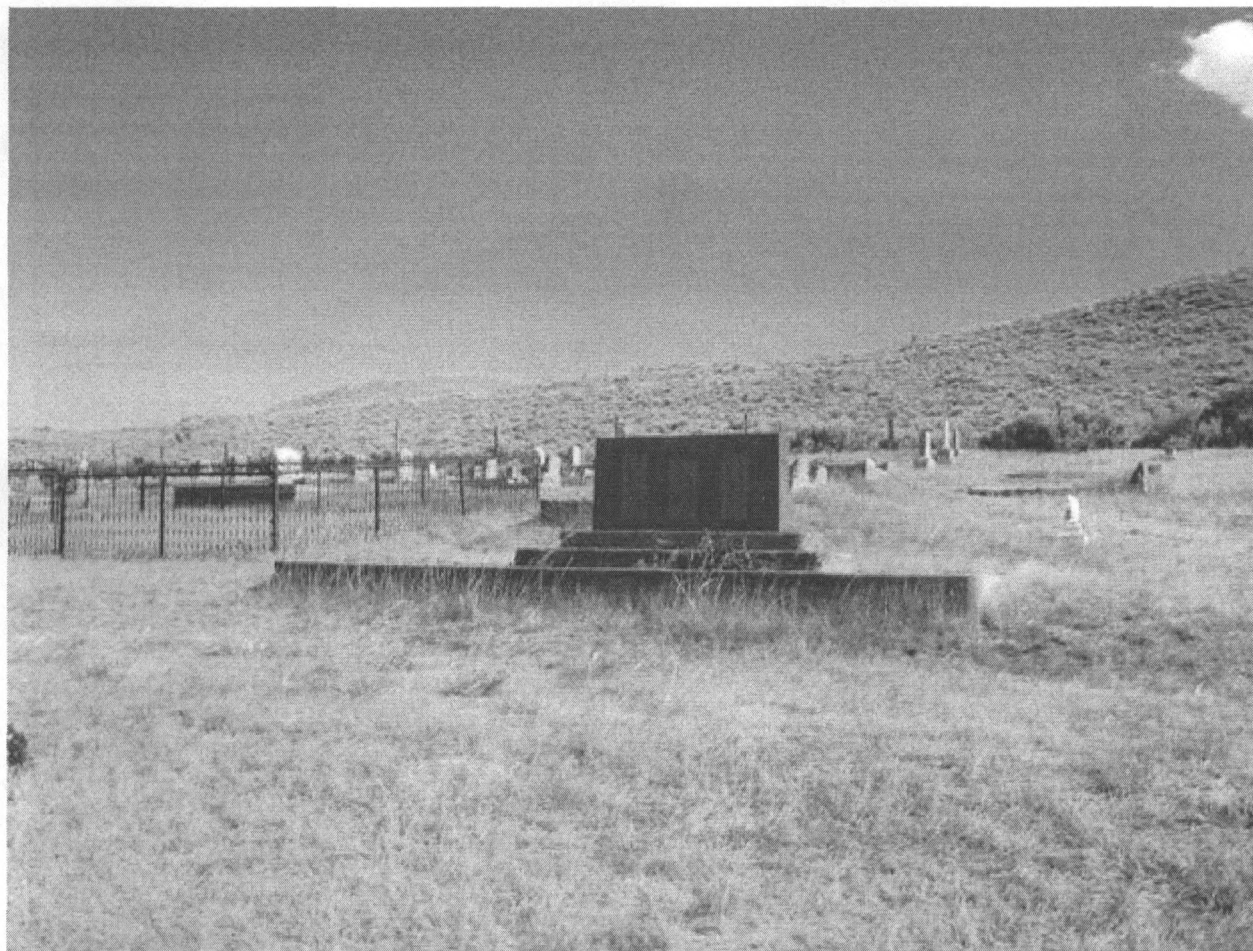


**United States Department of the Interior  
National Park Service**

**National Register of Historic Places Continuation Sheet**

Bearcreek Cemetery (24CB1250)
Name of Property
Carbon County, Montana
County and State
N/A
Name of multiple listing (if applicable)

Section number: Photographs



Name: Bearcreek Cemetery (24CB1250)  
 County and State: Carbon County, Montana  
 Photographer: Jon Axline  
 Date of Photograph: July 2010  
 Location of original negative: Montana Department of Transportation. Helena, Montana.  
 Description and view of camera: Smith Mine Disaster Monument. View to the southeast.  
 Photograph: 0022  
 MT\_CarbonCounty\_BearcreekCemetery\_0022

**United States Department of the Interior  
National Park Service**

**National Register of Historic Places Continuation Sheet**

Bearcreek Cemetery (24CB1250)

Name of Property

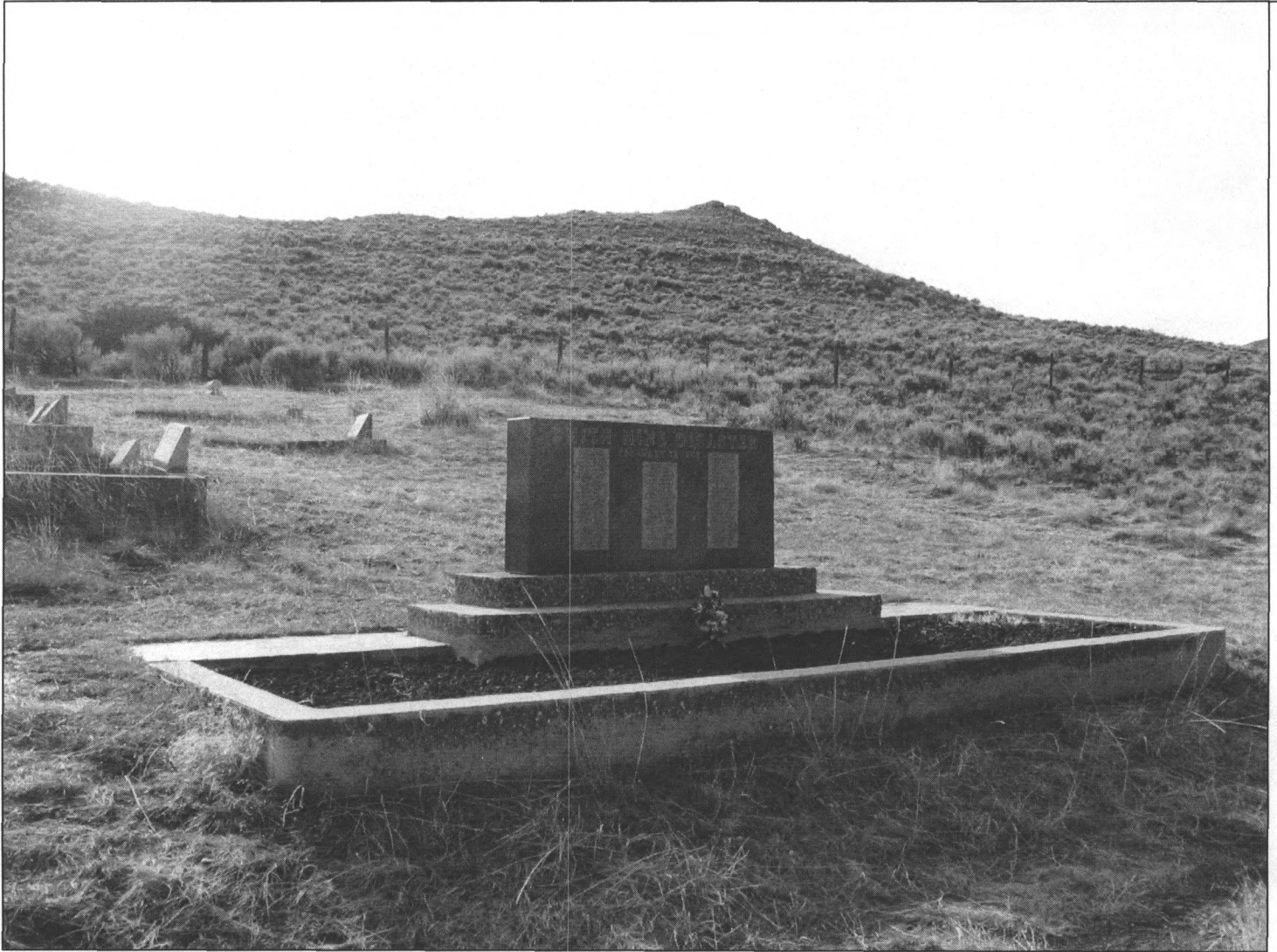
Carbon County, Montana

County and State

N/A

Name of multiple listing (if applicable)

Section number: Photographs



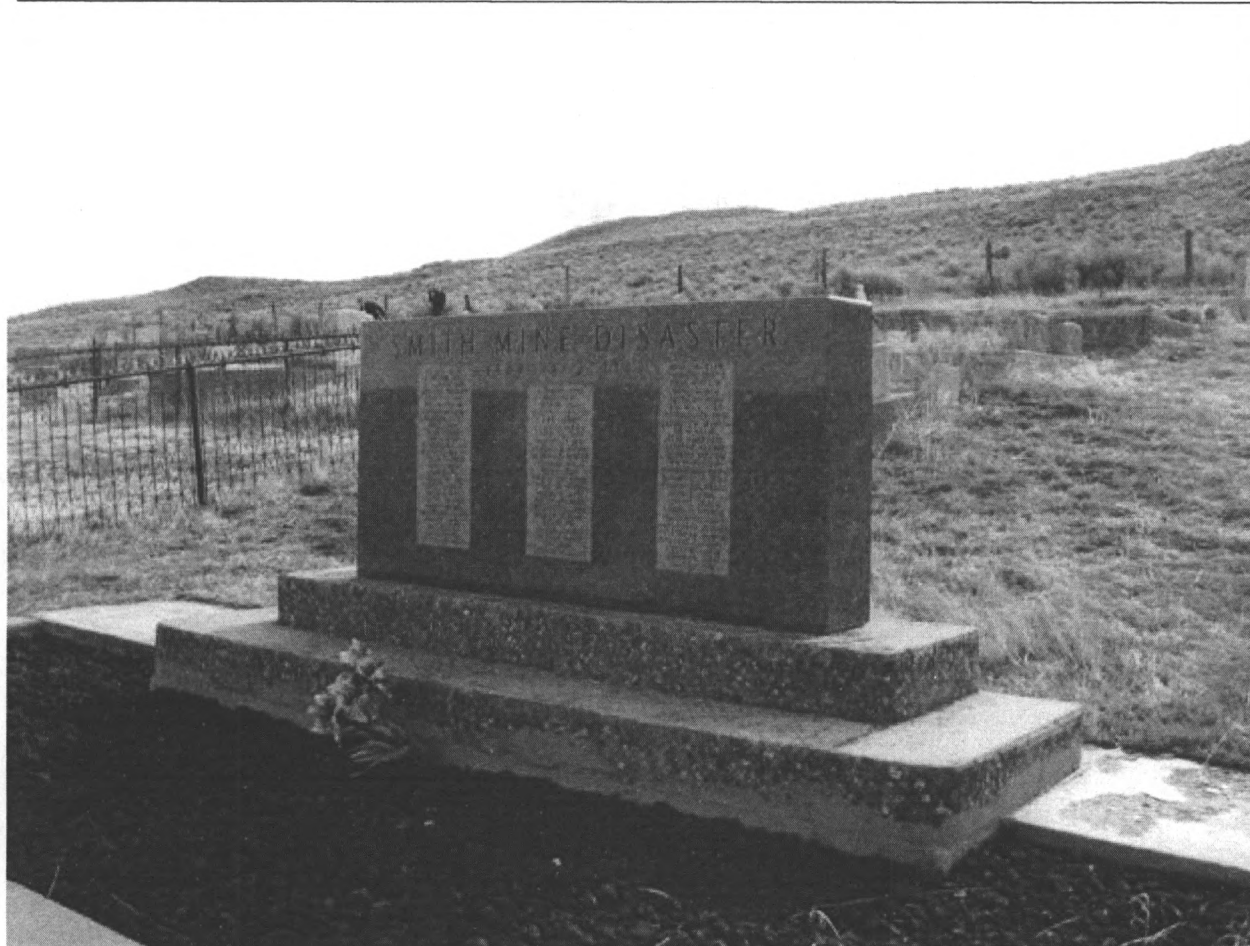
Name: Bearcreek Cemetery (24CB1250)  
 County and State: Carbon County, Montana  
 Photographer: Jon Axline  
 Date of Photograph: July 2010  
 Location of original negative: Montana Department of Transportation. Helena, Montana.  
 Description and view of camera: Smith Mine Disaster Monument. View to the southwest  
 Photograph: 00023  
 MT\_CarbonCounty\_BearcreekCemetery\_0023

**United States Department of the Interior  
National Park Service**

**National Register of Historic Places Continuation Sheet**

Bearcreek Cemetery (24CB1250)
Name of Property
Carbon County, Montana
County and State
N/A
Name of multiple listing (if applicable)

Section number: Photographs



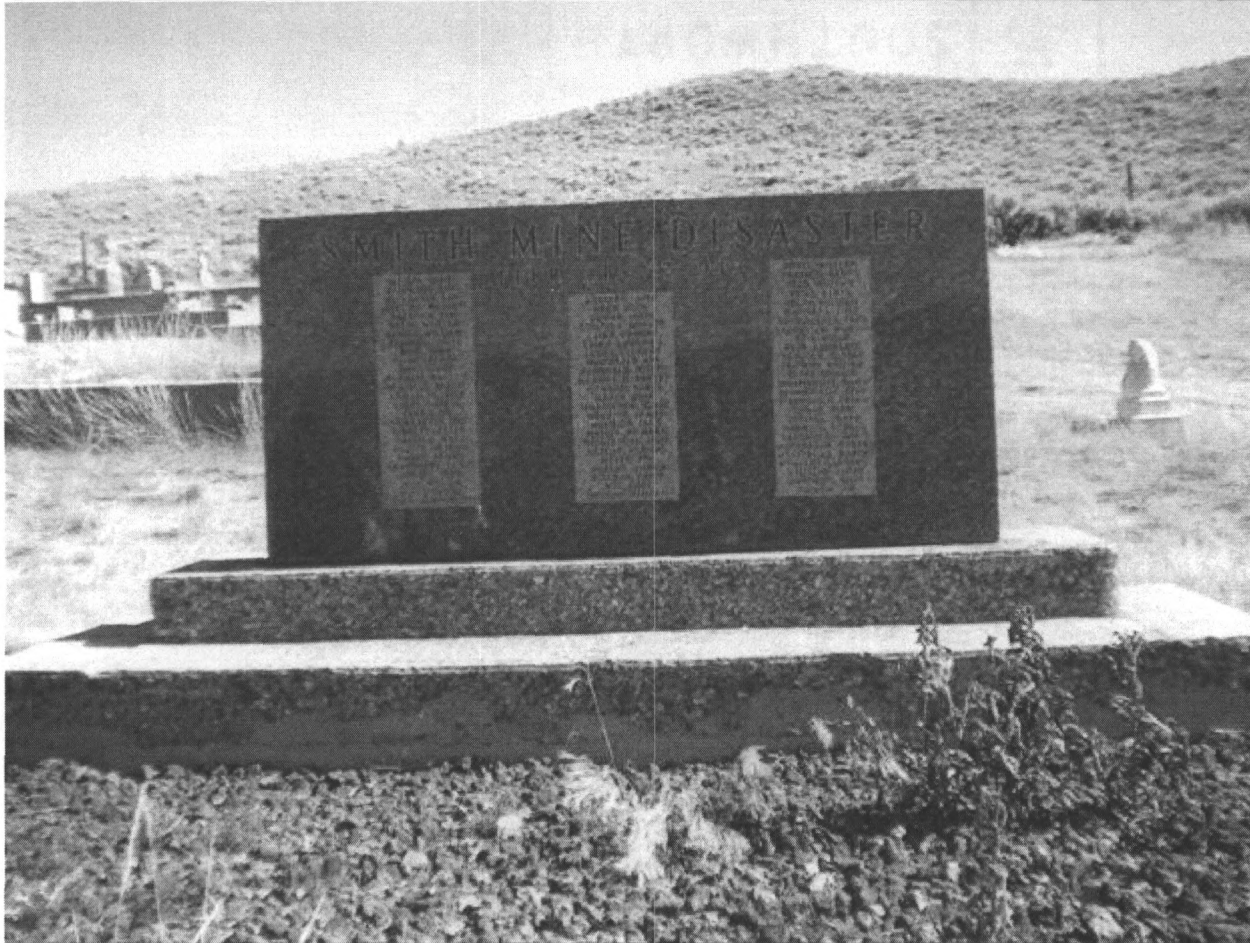
Name: Bearcreek Cemetery (24CB1250)  
 County and State: Carbon County, Montana  
 Photographer: Jon Axline  
 Date of Photograph: March 2009  
 Location of original negative: Montana Department of Transportation. Helena, Montana.  
 Description and view of camera: Smith Mine Disaster Monument. View to the southeast  
 Photograph: 0024  
 MT\_CarbonCounty\_BearcreekCemetery\_0024

United States Department of the Interior  
National Park Service

National Register of Historic Places Continuation Sheet

Bearcreek Cemetery (24CB1250)
Name of Property
Carbon County, Montana
County and State
N/A
Name of multiple listing (if applicable)

Section number: Photographs



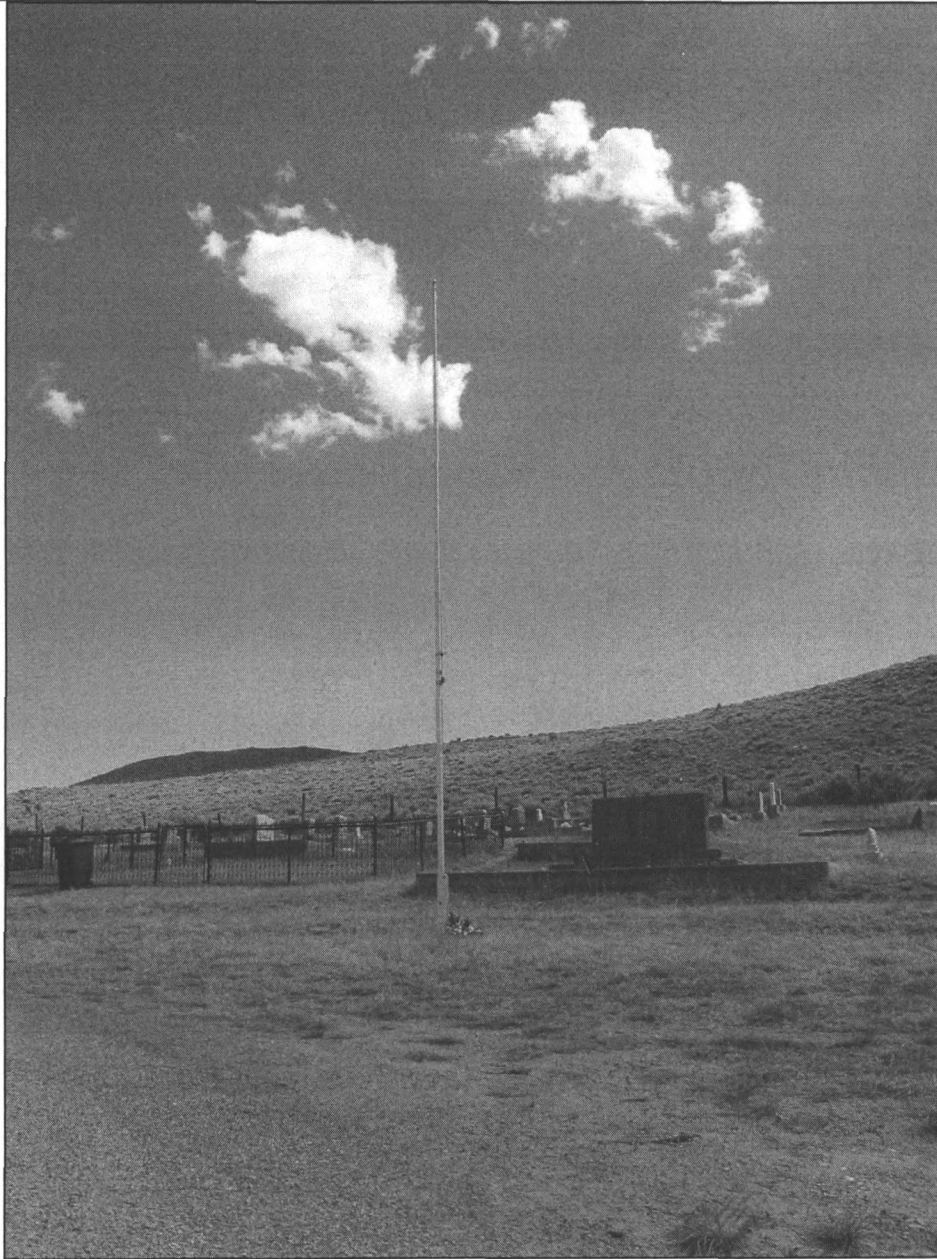
Name: Bearcreek Cemetery (24CB1250)  
 County and State: Carbon County, Montana  
 Photographer: Kate Axline  
 Date of Photograph: July 2010  
 Location of original negative: Montana Department of Transportation. Helena, Montana.  
 Description and view of camera: Smith Mine Disaster Monument. View to the south.  
 Photograph: 0025  
 MT\_CarbonCounty\_BearcreekCemetery\_0025

**United States Department of the Interior  
National Park Service**

**National Register of Historic Places Continuation Sheet**

Bearcreek Cemetery (24CB1250)
Name of Property
Carbon County, Montana
County and State
N/A
Name of multiple listing (if applicable)

Section number: Photographs



Name: Bearcreek Cemetery (24CB1250)  
 County and State: Carbon County, Montana  
 Photographer: Jon Axline  
 Date of Photograph: June 2010  
 Location of original negative: Montana Department of Transportation. Helena, Montana.  
 Description and view of camera: Flagpole. View to the southeast  
 Photograph: 0026  
 MT\_CarbonCounty\_BearcreekCemetery\_0026

**United States Department of the Interior  
National Park Service**

**National Register of Historic Places Continuation Sheet**

Section number: Photographs

Bearcreek Cemetery (24CB1250)

Name of Property

Carbon County, Montana

County and State

N/A

Name of multiple listing (if applicable)



Name: Bearcreek Cemetery (24CB1250)  
 County and State: Carbon County, Montana  
 Photographer: Jon Axline  
 Date of Photograph: March 2009  
 Location of original negative: Montana Department of Transportation. Helena, Montana.  
 Description and view of camera: Cenis Family Plot. View to the northwest.  
 Photograph: 0027  
 MT\_CarbonCounty\_BearcreekCemetery\_0027

**United States Department of the Interior  
National Park Service**

**National Register of Historic Places Continuation Sheet**

Bearcreek Cemetery (24CB1250)
Name of Property
Carbon County, Montana
County and State
N/A
Name of multiple listing (if applicable)

Section number: Photographs



Name: Bearcreek Cemetery (24CB1250)  
 County and State: Carbon County, Montana  
 Photographer: Jon Axline  
 Date of Photograph: August 2010  
 Location of original negative: Montana Department of Transportation. Helena, Montana.  
 Description and view of camera: Cenis Family Plot. View to the west  
 Photograph: 00028  
 MT\_CarbonCounty\_BearcreekCemetery\_0028

**United States Department of the Interior  
National Park Service**

**National Register of Historic Places Continuation Sheet**

Bearcreek Cemetery (24CB1250)

Name of Property  
Carbon County, Montana

County and State  
N/A

Name of multiple listing (if applicable)

Section number: Photographs



Name: Bearcreek Cemetery (24CB1250)  
 County and State: Carbon County, Montana  
 Photographer: Jon Axline  
 Date of Photograph: August 2010  
 Location of original negative: Montana Department of Transportation. Helena, Montana.  
 Description and view of camera: Cenis Family Plot. View to the west  
 Photograph: 0029  
 MT\_CarbonCounty\_BearcreekCemetery\_0029



United States Department of the Interior  
National Park Service

National Register of Historic Places Continuation Sheet

Bearcreek Cemetery (24CB1250)

Name of Property

Carbon County, Montana

County and State

N/A

Name of multiple listing (if applicable)

Section number: Photographs



Name: Bearcreek Cemetery (24CB1250)  
 County and State: Carbon County, Montana  
 Photographer: Jon Axline  
 Date of Photograph: August 2010  
 Location of original negative: Montana Department of Transportation. Helena, Montana.  
 Description and view of camera: Cenis Family Plot. View to the west-northwest  
 Photograph: 0030  
 MT\_CarbonCounty\_BearcreekCemetery\_0030

**United States Department of the Interior  
National Park Service**

**National Register of Historic Places Continuation Sheet**

Bearcreek Cemetery (24CB1250)

Name of Property

Carbon County, Montana

County and State

N/A

Name of multiple listing (if applicable)

Section number: Photographs



Name: Bearcreek Cemetery (24CB1250)  
 County and State: Carbon County, Montana  
 Photographer: Jon Axline  
 Date of Photograph: July 2010  
 Location of original negative: Montana Department of Transportation. Helena, Montana.  
 Description and view of camera: Enclosed family plots. View to the southwest  
 Photograph: 0031  
 MT\_CarbonCounty\_BearcreekCemetery\_0031

United States Department of the Interior  
National Park Service

National Register of Historic Places Continuation Sheet

Bearcreek Cemetery (24CB1250)

Name of Property

Carbon County, Montana

County and State

N/A

Name of multiple listing (if applicable)

Section number: Photographs



Name: Bearcreek Cemetery (24CB1250)  
County and State: Carbon County, Montana  
Photographer: Jon Axline  
Date of Photograph: July 2010  
Location of original negative: Montana Department of Transportation. Helena, Montana.  
Description and view of camera: Graves. View to the northwest.  
Photograph: 0032  
MT\_CarbonCounty\_BearcreekCemetery\_0032

United States Department of the Interior  
National Park Service

National Register of Historic Places Continuation Sheet

Section number: Photographs

Bearcreek Cemetery (24CB1250)

Name of Property

Carbon County, Montana

County and State

N/A

Name of multiple listing (if applicable)



Name: Bearcreek Cemetery (24CB1250)  
 County and State: Carbon County, Montana  
 Photographer: Kate Axline  
 Date of Photograph: July 2010  
 Location of original negative: Montana Department of Transportation. Helena, Montana.  
 Description and view of camera: Graves of two eastern European persons. View to the northwest.  
 Photograph: 00033  
 MT\_CarbonCounty\_BearcreekCemetery\_0033

United States Department of the Interior  
National Park Service

National Register of Historic Places Continuation Sheet

Bearcreek Cemetery (24CB1250)

Name of Property

Carbon County, Montana

County and State

N/A

Name of multiple listing (if applicable)

Section number: Photographs



Name: Bearcreek Cemetery (24CB1250)  
 County and State: Carbon County, Montana  
 Photographer: Kate Axline  
 Date of Photograph: July 2010  
 Location of original negative: Montana Department of Transportation. Helena, Montana.  
 Description and view of camera: Eastern European headstone with cameo photo. View to the west.  
 Photograph: 0034  
 MT\_CarbonCounty\_BearcreekCemetery\_0034

**United States Department of the Interior  
National Park Service**

**National Register of Historic Places Continuation Sheet**

Bearcreek Cemetery (24CB1250)
Name of Property
Carbon County, Montana
County and State
N/A
Name of multiple listing (if applicable)

Section number: Photographs



Name: Bearcreek Cemetery (24CB1250)  
 County and State: Carbon County, Montana  
 Photographer: Kate Axline  
 Date of Photograph: July 2010  
 Location of original negative: Montana Department of Transportation. Helena, Montana.  
 Description and view of camera: Eastern European headstone with cameo photo. View to the west  
 Photograph: 0035  
 MT\_CarbonCounty\_BearcreekCemetery\_0035

**United States Department of the Interior  
National Park Service**

**National Register of Historic Places Continuation Sheet**

Bearcreek Cemetery (24CB1250)
Name of Property
Carbon County, Montana
County and State
N/A
Name of multiple listing (if applicable)

Section number: Photographs



Name: Bearcreek Cemetery (24CB1250)  
 County and State: Carbon County, Montana  
 Photographer: Kate Axline  
 Date of Photograph: July 2010  
 Location of original negative: Montana Department of Transportation. Helena, Montana.  
 Description and view of camera: Headstone of Andrew Lubarda (1891-1922). View to the west.  
 Photograph: 0036  
 MT\_CarbonCounty\_BearcreekCemetery\_0036

**United States Department of the Interior  
National Park Service**

**National Register of Historic Places Continuation Sheet**

Bearcreek Cemetery (24CB1250)
Name of Property
Carbon County, Montana
County and State
N/A
Name of multiple listing (if applicable)

Section number: Photographs



Name: Bearcreek Cemetery (24CB1250)  
 County and State: Carbon County, Montana  
 Photographer: Kate Axline  
 Date of Photograph: July 2010  
 Location of original negative: Montana Department of Transportation. Helena, Montana.  
 Description and view of camera: Eastern European headstone with cameo photo. View to the west  
 Photograph: 0037  
 MT\_CarbonCounty\_BearcreekCemetery\_0037



**United States Department of the Interior  
National Park Service**

**National Register of Historic Places Continuation Sheet**

Bearcreek Cemetery (24CB1250)
Name of Property
Carbon County, Montana
County and State
N/A
Name of multiple listing (if applicable)

Section number: Photographs



Name: Bearcreek Cemetery (24CB1250)  
 County and State: Carbon County, Montana  
 Photographer: Jon Axline  
 Date of Photograph: March 2009  
 Location of original negative: Montana Department of Transportation. Helena, Montana.  
 Description and view of camera: Obelisk headstone. View to the northwest.  
 Photograph: 00038  
 MT\_CarbonCounty\_BearcreekCemetery\_0038

**United States Department of the Interior  
National Park Service**

**National Register of Historic Places Continuation Sheet**

Bearcreek Cemetery (24CB1250)
Name of Property
Carbon County, Montana
County and State
N/A
Name of multiple listing (if applicable)

Section number: Photographs



Name: Bearcreek Cemetery (24CB1250)  
 County and State: Carbon County, Montana  
 Photographer: Jon Axline  
 Date of Photograph: March 2009  
 Location of original negative: Montana Department of Transportation. Helena, Montana.  
 Description and view of camera: Eastern European headstone with cameo photos. View to the west.  
 Photograph: 0039  
 MT\_CarbonCounty\_BearcreekCemetery\_0039

**United States Department of the Interior  
National Park Service**

**National Register of Historic Places Continuation Sheet**

Bearcreek Cemetery (24CB1250)

Name of Property

Carbon County, Montana

County and State

N/A

Name of multiple listing (if applicable)

Section number: Photographs



Name: Bearcreek Cemetery (24CB1250)  
 County and State: Carbon County, Montana  
 Photographer: Jon Axline  
 Date of Photograph: March 2009  
 Location of original negative: Montana Department of Transportation. Helena, Montana.  
 Description and view of camera: Headstone of Tommy Lukich (1933-1936). View to the west  
 Photograph: 0040  
 MT\_CarbonCounty\_BearcreekCemetery\_0040

United States Department of the Interior  
National Park Service

National Register of Historic Places Continuation Sheet

Section number: Photographs

Bearcreek Cemetery (24CB1250)

Name of Property

Carbon County, Montana

County and State

N/A

Name of multiple listing (if applicable)



Name: Bearcreek Cemetery (24CB1250)  
 County and State: Carbon County, Montana  
 Photographer: Jon Axline  
 Date of Photograph: March 2009  
 Location of original negative: Montana Department of Transportation. Helena, Montana.  
 Description and view of camera: Fenced plot of Iliya Popovich (1916-1919). View to the southwest.  
 Photograph: 0041  
 MT\_CarbonCounty\_BearcreekCemetery\_0041

United States Department of the Interior  
National Park Service

National Register of Historic Places Continuation Sheet

Section number: Photographs

Bearcreek Cemetery (24CB1250)

Name of Property

Carbon County, Montana

County and State

N/A

Name of multiple listing (if applicable)



Name: Bearcreek Cemetery (24CB1250)  
 County and State: Carbon County, Montana  
 Photographer: Jon Axline  
 Date of Photograph: March 2009  
 Location of original negative: Montana Department of Transportation. Helena, Montana.  
 Description and view of camera: Headstone of Iliya Popovich. View to the west.  
 Photograph: 0042  
 MT\_CarbonCounty\_BearcreekCemetery\_0042

United States Department of the Interior  
National Park Service

National Register of Historic Places Continuation Sheet

Bearcreek Cemetery (24CB1250)
Name of Property
Carbon County, Montana
County and State
N/A
Name of multiple listing (if applicable)

Section number: Photographs



Name: Bearcreek Cemetery (24CB1250)  
 County and State: Carbon County, Montana  
 Photographer: Jon Axline  
 Date of Photograph: March 2009  
 Location of original negative: Montana Department of Transportation. Helena, Montana.  
 Description and view of camera: Headstone of Harold Sasich (1916-1917). View to the west.  
 Photograph: 00043  
 MT\_CarbonCounty\_BearcreekCemetery\_0043

**United States Department of the Interior  
National Park Service**

**National Register of Historic Places Continuation Sheet**

Section number: Photographs

Bearcreek Cemetery (24CB1250)

Name of Property

Carbon County, Montana

County and State

N/A

Name of multiple listing (if applicable)



Name: Bearcreek Cemetery (24CB1250)  
 County and State: Carbon County, Montana  
 Photographer: Jon Axline  
 Date of Photograph: March 2009  
 Location of original negative: Montana Department of Transportation. Helena, Montana.  
 Description and view of camera: Headstone of Violet Virginia Thomas (1917-1919). View to the west.  
 Photograph: 0044  
 MT\_CarbonCounty\_BearcreekCemetery\_0044

United States Department of the Interior  
National Park Service

National Register of Historic Places Continuation Sheet

Bearcreek Cemetery (24CB1250)
Name of Property
Carbon County, Montana
County and State
N/A
Name of multiple listing (if applicable)

Section number: Photographs



Name: Bearcreek Cemetery (24CB1250)  
 County and State: Carbon County, Montana  
 Photographer: Jon Axline  
 Date of Photograph: March 2009  
 Location of original negative: Montana Department of Transportation. Helena, Montana.  
 Description and view of camera: Unknown. Bearcreek Aerie No. 2032, F.O.E. View to the east  
 Photograph: 0045  
 MT\_CarbonCounty\_BearcreekCemetery\_0045



**United States Department of the Interior  
National Park Service**

**National Register of Historic Places Continuation Sheet**

Bearcreek Cemetery (24CB1250)
Name of Property
Carbon County, Montana
County and State
N/A
Name of multiple listing (if applicable)

Section number: Photographs



ast.

Name: Bearcreek Cemetery (24CB1250)  
 County and State: Carbon County, Montana  
 Photographer: Jon Axline  
 Date of Photograph: March 2009  
 Location of original negative: Montana Department of Transportation. Helena, Montana.  
 Description and view of camera: Unknown. Fraternal Order of Eagles grave marker. View to the east.  
 Photograph: 0046  
 MT\_CarbonCounty\_BearcreekCemetery\_0046

**United States Department of the Interior  
National Park Service**

**National Register of Historic Places Continuation Sheet**

Bearcreek Cemetery (24CB1250)

Name of Property

Carbon County, Montana

County and State

N/A

Name of multiple listing (if applicable)

Section number: Photographs



Name: Bearcreek Cemetery (24CB1250)  
 County and State: Carbon County, Montana  
 Photographer: Jon Axline  
 Date of Photograph: July 2010  
 Location of original negative: Montana Department of Transportation. Helena, Montana.  
 Description and view of camera: Unknown grave. View to the southeast.  
 Photograph: 0047  
 MT\_CarbonCounty\_BearcreekCemetery\_0047

United States Department of the Interior  
National Park Service

National Register of Historic Places Continuation Sheet

Bearcreek Cemetery (24CB1250)
Name of Property
Carbon County, Montana
County and State
N/A
Name of multiple listing (if applicable)

Section number: Photographs



Name: Bearcreek Cemetery (24CB1250)  
 County and State: Carbon County, Montana  
 Photographer: Jon Axline  
 Date of Photograph: March 2009  
 Location of original negative: Montana Department of Transportation. Helena, Montana.  
 Description and view of camera: Unknown grave. View to the west.  
 Photograph: 00048  
 MT\_CarbonCounty\_BearcreekCemetery\_0048

**United States Department of the Interior  
National Park Service**

**National Register of Historic Places Continuation Sheet**

Bearcreek Cemetery (24CB1250)

Name of Property

Carbon County, Montana

County and State

N/A

Name of multiple listing (if applicable)

Section number: Photographs



Name: Bearcreek Cemetery (24CB1250)  
 County and State: Carbon County, Montana  
 Photographer: Kate Axline  
 Date of Photograph: July 2010  
 Location of original negative: Montana Department of Transportation. Helena, Montana.  
 Description and view of camera: Marble headstone. View to the north.  
 Photograph: 0049  
 MT\_CarbonCounty\_BearcreekCemetery\_0049

United States Department of the Interior  
National Park Service

National Register of Historic Places Continuation Sheet

Bearcreek Cemetery (24CB1250)
Name of Property
Carbon County, Montana
County and State
N/A
Name of multiple listing (if applicable)

Section number: Photographs



Name: Bearcreek Cemetery (24CB1250)  
 County and State: Carbon County, Montana  
 Photographer: Jon Axline  
 Date of Photograph: March 2009  
 Location of original negative: Montana Department of Transportation. Helena, Montana.  
 Description and view of camera: Annie Mourich, Wife of Blaz Planinsek (1894-1924). View to the west  
 Photograph: 0050  
 MT\_CarbonCounty\_BearcreekCemetery\_0050

United States Department of the Interior  
National Park Service

National Register of Historic Places Continuation Sheet

Section number: Photographs

Bearcreek Cemetery (24CB1250)

Name of Property

Carbon County, Montana

County and State

N/A

Name of multiple listing (if applicable)



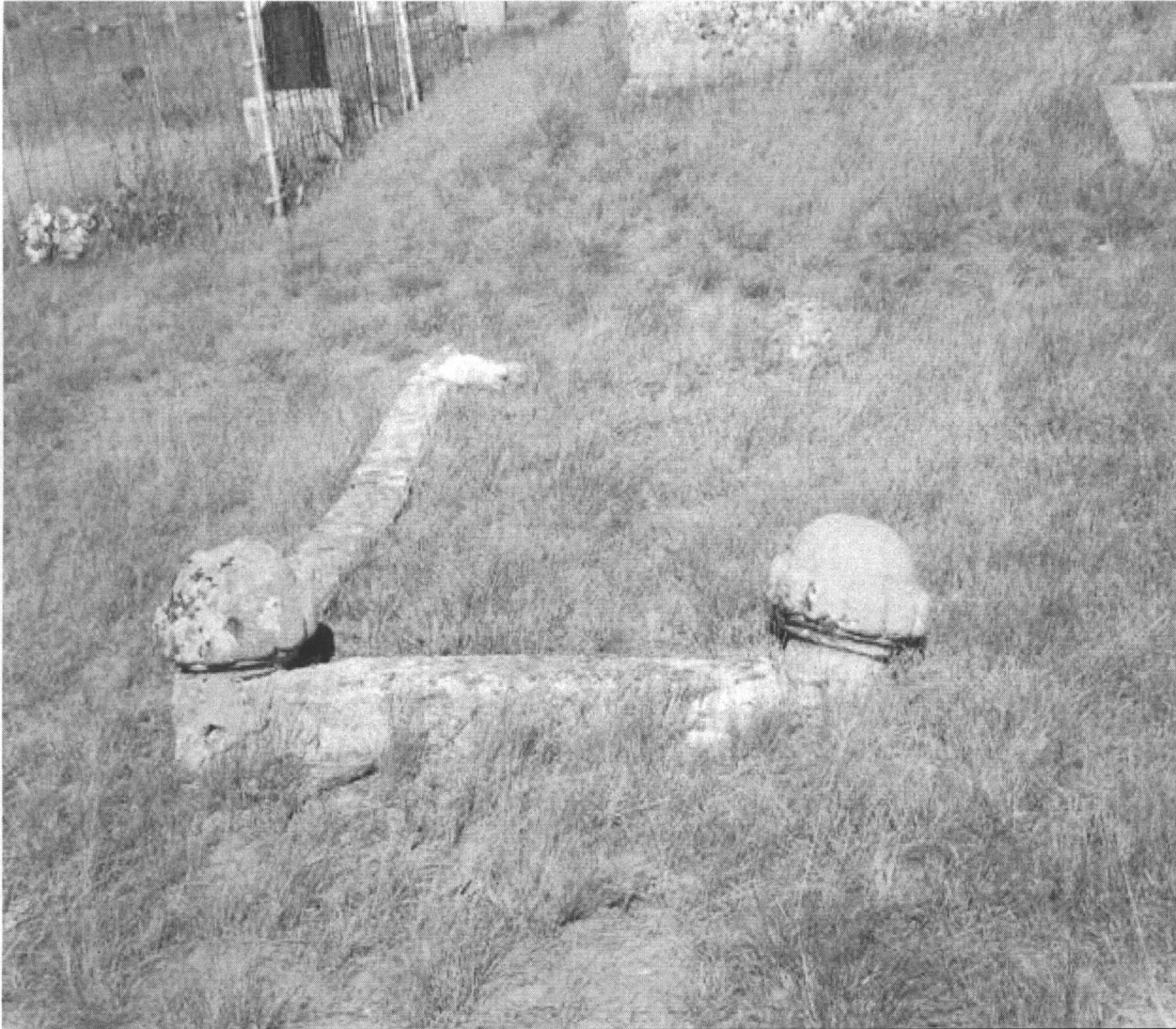
Name: Bearcreek Cemetery (24CB1250)  
 County and State: Carbon County, Montana  
 Photographer: Jon Axline  
 Date of Photograph: March 2009  
 Location of original negative: Montana Department of Transportation. Helena, Montana.  
 Description and view of camera: Headstone with cameo photo of Andrew Ugaste (1886-1919). View to the west.  
 Photograph: 0051  
 MT\_CarbonCounty\_BearcreekCemetery\_0051

**United States Department of the Interior  
National Park Service**

**National Register of Historic Places Continuation Sheet**

Bearcreek Cemetery (24CB1250)
Name of Property
Carbon County, Montana
County and State
N/A
Name of multiple listing (if applicable)

Section number: Photographs



Name: Bearcreek Cemetery (24CB1250)  
 County and State: Carbon County, Montana  
 Photographer: Kate Axline  
 Date of Photograph: July 2010  
 Location of original negative: Montana Department of Transportation. Helena, Montana.  
 Description and view of camera: Unknown grave. View to the west.  
 Photograph: 0052  
 MT\_CarbonCounty\_BearcreekCemetery\_0052

United States Department of the Interior  
National Park Service

National Register of Historic Places Continuation Sheet

Section number: Photographs

Bearcreek Cemetery (24CB1250)

Name of Property

Carbon County, Montana

County and State

N/A

Name of multiple listing (if applicable)



Name: Bearcreek Cemetery (24CB1250)  
 County and State: Carbon County, Montana  
 Photographer: Kate Axline  
 Date of Photograph: July 2010  
 Location of original negative: Montana Department of Transportation. Helena, Montana.  
 Description and view of camera: Toppled headstone of Roza Cernik (1881-1917). View to the southwest.  
 Photograph: 00053  
 MT\_CarbonCounty\_BearcreekCemetery\_0053



United States Department of the Interior  
National Park Service

National Register of Historic Places Continuation Sheet

Bearcreek Cemetery (24CB1250)

Name of Property

Carbon County, Montana

County and State

N/A

Name of multiple listing (if applicable)

Section number: Photographs



Name: Bearcreek Cemetery (24CB1250)  
 County and State: Carbon County, Montana  
 Photographer: Kate Axline  
 Date of Photograph: July 2010  
 Location of original negative: Montana Department of Transportation. Helena, Montana.  
 Description and view of camera: Headstone of Andrew Marinczek (1914-1918). View to the west.  
 Photograph: 0054  
 MT\_CarbonCounty\_BearcreekCemetery\_0054

United States Department of the Interior  
National Park Service

National Register of Historic Places Continuation Sheet

Bearcreek Cemetery (24CB1250)
Name of Property
Carbon County, Montana
County and State
N/A
Name of multiple listing (if applicable)

Section number: Photographs



Name: Bearcreek Cemetery (24CB1250)  
 County and State: Carbon County, Montana  
 Photographer: Jon Axline  
 Date of Photograph: March 2009  
 Location of original negative: Montana Department of Transportation. Helena, Montana.  
 Description and view of camera: Headstone of August Louis Deruelle, a victim of the Smith Mine Disaster. View to the west.  
 Photograph: 0055  
 MT\_CarbonCounty\_BearcreekCemetery\_0055

United States Department of the Interior  
National Park Service

National Register of Historic Places Continuation Sheet

Bearcreek Cemetery (24CB1250)

Name of Property

Carbon County, Montana

County and State

N/A

Name of multiple listing (if applicable)

Section number: Photographs



Name: Bearcreek Cemetery (24CB1250)  
 County and State: Carbon County, Montana  
 Photographer: Jon Axline  
 Date of Photograph: March 2009  
 Location of original negative: Montana Department of Transportation. Helena, Montana.  
 Description and view of camera: Marble headstone with sandstone headstones in background. View to the west-northwest.  
 Photograph: 0056  
 MT\_CarbonCounty\_BearcreekCemetery\_0056

United States Department of the Interior  
National Park Service

National Register of Historic Places Continuation Sheet

Section number: Photographs

Bearcreek Cemetery (24CB1250)

Name of Property

Carbon County, Montana

County and State

N/A

Name of multiple listing (if applicable)



Name: Bearcreek Cemetery (24CB1250)  
 County and State: Carbon County, Montana  
 Photographer: Jon Axline  
 Date of Photograph: March 2009  
 Location of original negative: Montana Department of Transportation. Helena, Montana.  
 Description and view of camera: Marble lamb motif marking Zorka Pekovich's grave. View to the west.  
 Photograph: 0057  
 MT\_CarbonCounty\_BearcreekCemetery\_0057