



Garfield School (Old)
528 Cottage Street NE
Salem, Marion County, Oregon

Copy negative in possession of:

Alfred C. Jones
836 Church Street NE
Salem, OR 97301

DEC 2 1981

1 of 11
Historic view, ca. 1910, West and south
elevations, from intersection of Marion
and Cottage Streets.

GARFIELD SCHOOL
As originally built



FOR LEASE

371-8998

ELD SCHOOL

Garfield School (Old)
528 Cottage Street NE
Salem, Marion County, Oregon

Alfred C. Jones photo, 1980
836 Church Street NE
Salem, OR 97301

DEC 2 1981

2 of 11
West (front) and south elevations.

GARFIELD SCHOOL
South & part of
West facade from SW
Alfred C Jones photo



Garfield School (Old)
528 Cottage Street NE
Salem, Marion County, Oregon

Alfred C. Jones photo, 1980
836 Church Street NE
Salem, OR 97301

DEC 2 1981

3 of 11
South and east (rear) elevations, showing
stair and service tower added atop
original back porch.

GARFIELD SCHOOL
East and part of
South facade from SE
Alfred C Jones photo



Garfield School (Old)
528 Cottage Street
Salem, Marion County, Oregon

DEC 2 1981

Alfred C. Jones, photo, 1980
836 Church Street NE
Salem, OR 97301

4 of 11

Oblique view of east (rear) elevation
showing stair tower.

GARFIELD SCHOOL

East side tower with
addition on top.

Alfred C Jones photo



Garfield School (Old)
528 Cottage Street NE
Salem, Marion County, Oregon

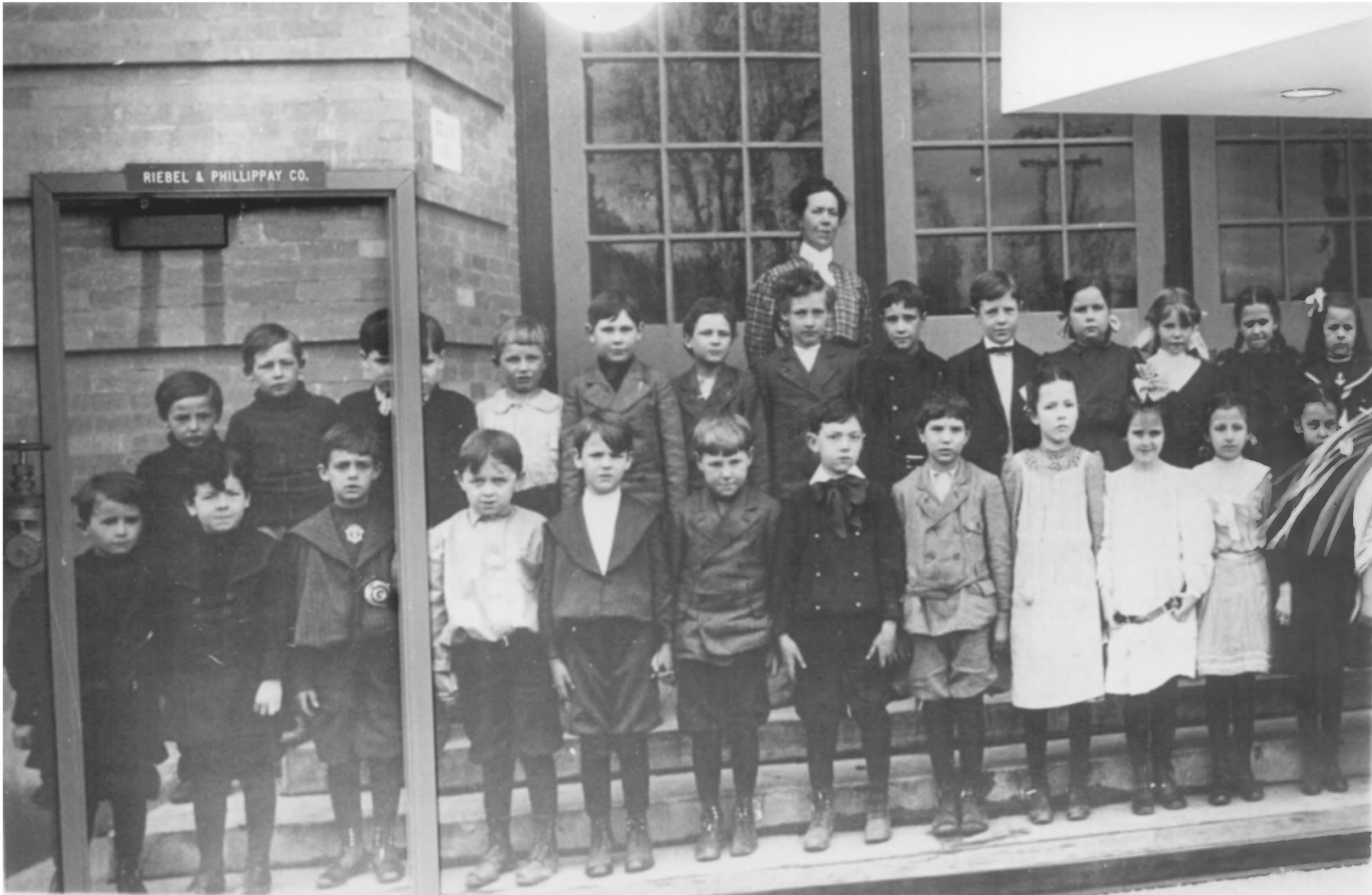
Alfred C. Jones photo 1980
836 Church Street NE
Salem, OR 97301

DEC 2 1981

5 of 11
East and north elevations.

GARFIELD SCHOOL
North and part of
East facade from NE
Alfred C Jones photo

RIEBEL & PHILLIPPAY CO.



Garfield School (01d)
528 Cottage Street NE
Salem, Marion County, Oregon

Alfred C. Jones photo, 1980
836 Church Street NE
Salem, OR 97301

DEC 2 1981

6 of 11

Close up view of photo mural of Miss
Margaret Cosper and her pupils used as
wall cover in the remodeled entrance
lobby.

GARFIELD SCHOOL

Photo mural in entrance
hall, Miss Cosper's class.
Alfred C. Jones photo



Garfield School (old)
528 Cottage Street NE
Salem, Marion County, Oregon

Alfred C. Jones photo 1980
836 Church Street NE
Salem, OR 97301

DEC 2 1981

7 of 11

Ground story central hall space, showing
door frames intact.

GARFIELD SCHOOL
Original doors from
first floor central hall
ALFRED C JONES PHOTO



Garfield School (Old)
528 Cottage Street Ne
Salem, Marion County, Oregon

Alfred C. Jones photo, 1980
836 Church Street NE
Salem, OR 97301 DEC 2 1981

8 of 11

Interior view of principal's second
story office atop front porch.

GARFIELD SCHOOL
Windows in principal's
office over portico
entrance
Alfred C Jones photo



Garfield School (Old)
528 Cottage Street NE
Salem, Marion County, Oregon

Alfred C. Jones photo, 1980
836 Church Street NE
Salem, OR 97301

DEC 2 1981

9 of 11

Interior view of classroom in NW corner
of second story. Note plaster removed
from walls. Ceilings lowered to conceal
electrical lighting.

GARFIELD SCHOOL
Second floor NW school
room, between leasors.
Alfred C. Jones photo



Garfield School (Old)
528 Cottage Street NE
Salem, Marion County, Oregon

Alfred C. Jones photo, 1980
836 Church Street NE
Salem, OR 97301

DEC 2 1981

10 of 11

Interior view, second story, looking
south from NW corner schoolroom into
principal's office.

GARFIELD SCHOOL
From second floor NW
school room to principal's
office, between classrooms
Alfred C. Jones photo



Garfield School (old)
528 Cottage Street NE
Salem, Marion County, Oregon

NOV 20 1980

Alfred C. Jones photo, 1980
836 Church Street NE
Salem, OR 9730k

DEC 2 1981

11 of 11

Interior view, third story, former class-
room space overlooking central two-story
portico section.

GARFIELD SCHOOL
Office, third floor
center front.
Alfred C. Jones photo