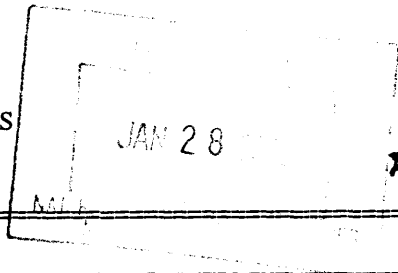


United States Department of the Interior
National Park Service

AUG 14 1998

NATIONAL REGISTER OF HISTORIC PLACES
REGISTRATION FORM



Ala. Historical Commission

1. Name of Property

Historic Name: Lustron House

Other Names/Site Number: N/A

2. Location

Street & Number: 430 Columbiana Road Not for Publication: N/A

City or Town: Birmingham Vicinity: N/A

State: Alabama Code: AL County: Jefferson Code: 073

Zip Code: 35259

3. State/Federal Agency Certification

As the designated authority under the National Historic Preservation Act of 1986, as amended, I hereby certify that this X nomination ___ request for determination of eligibility meets the documentation standards for registering properties in the National Register of Historic Places and meets the procedural and professional requirements set forth in 36 CFR Part 60. In my opinion, the property X meets ___ does not meet the National Register Criteria. I recommend that this property be considered significant locally nationwide ___ statewide X locally. (___ See continuation sheet for additional comments.)

[Signature]
Signature of certifying official

Alabama Historical Commission
(State Historic Preservation Office)
State or Federal agency and bureau

1/26/00
Date

In my opinion, the property ___ meets ___ does not meet the National Register criteria. (___ See continuation sheet for additional comments.)

Signature of commenting or other official

State or Federal agency and bureau

Date

4. National Park Service Certification

I, hereby certify that this property is:

X entered in the National Register

___ See continuation sheet.

___ determined eligible for the
National Register

___ See continuation sheet.

___ determined not eligible for the
National Register

___ removed from the National Register

___ other (explain:)

[Signature]
Signature of Keeper

2/24/00
Date of Action

Lustron House
Name of Property

Jefferson County, Alabama
County and State

5. Classification

Ownership of Property (Check as many boxes as apply)

- private
 public-local
 public-State
 public-Federal

Category of Property (Check only one box)

- building(s)
 district
 site
 structure
 object

Number of Resources within Property

Contributing	Noncontributing	
<u>1</u>	<u>0</u>	buildings
<u>0</u>	<u>0</u>	sites
<u>0</u>	<u>0</u>	structures
<u>0</u>	<u>0</u>	objects
<u>1</u>	<u>0</u>	Total

Number of contributing resources previously listed in the National Register N/A

Name of related multiple property listing (Enter "N/A" if property is not part of a multiple property listing.):

Lustron Houses In Alabama

6. Function or Use

Historic Functions (Enter categories from instructions)

Category:
DOMESTIC

Subcategory:
Single Dwelling

Current Functions (Enter categories from instructions)

Category:
DOMESTIC

Subcategory:
Single Dwelling

7. Description

Architectural Classification (Enter categories from instructions)

Other: Lustron House

Materials (Enter categories from instructions)

foundation	<u>Concrete</u>
roof	<u>Metal: Steel</u>
walls	<u>Metal: Steel</u>
other	<u>Metal: Steel, Glass</u>

Narrative Description (Describe the historic and current condition of the property on one or more continuation sheets.)

(See Continuation Sheet Section 7 Page 1)

Lustron House
Name of Property

Jefferson County, Alabama
County and State

8. Statement of Significance

Applicable National Register Criteria (Mark "x" in one or more boxes for the criteria qualifying the property for National Register listing)

- A Property is associated with events that have made a significant contribution to the broad patterns of our history.
- B Property is associated with the lives of persons significant in our past.
- C Property embodies the distinctive characteristics of a type, period, or method of construction or represents the work of a master, or possesses high artistic values, or represents a significant and distinguishable entity whose components lack individual distinction.
- D Property has yielded, or is likely to yield information important in prehistory or history.

Criteria Considerations (Mark "X" in all the boxes that apply.) N/A

- A owned by a religious institution or used for religious purposes.
- B removed from its original location.
- C a birthplace or a grave.
- D a cemetery.
- E a reconstructed building, object, or structure.
- F a commemorative property.
- G less than 50 years of age or achieved significance within the past 50 years.

Areas of Significance (Enter categories from instructions)

Architecture

Engineering

Period of Significance

1949

Significant Dates

1949

Significant Person (Complete if Criterion B is marked above): N/A

Cultural Affiliation: N/A

Architect/Builder:

Koch, Carl and Associates (Architect)

Lustron Corporation (Builder)

Narrative Statement of Significance (Explain the significance of the property on one or more continuation sheets.)

(See Continuation Sheet Section 8 Page 3)

Lustron House
Name of Property

Jefferson County, Alabama
County and State

9. Major Bibliographical References

(Cite the books, articles, and other sources used in preparing this form on one or more continuation sheets.)

Previous documentation on file (NPS) N/A

- preliminary determination of individual listing (36 CFR 67) has been requested.
- previously listed in the National Register
- previously determined eligible by the National Register
- designated a National Historic Landmark
- recorded by Historic American Buildings Survey # _____
- recorded by Historic American Engineering Record # _____

Primary Location of Additional Data

- State Historic Preservation Office
- Other State agency
- Federal agency
- Local government
- University
- Other

Name of repository: _____

10. Geographical Data

Acreage of Property: less than one acre

UTM References (Place additional UTM references on a continuation sheet)

	Zone Easting	Northing	Zone Easting	Northing
1	<u>16516860</u>	<u>37025503</u>	<u> </u>	<u> </u>
2	<u> </u>	<u> </u>	<u>4</u>	<u> </u>
	<u> </u> See continuation sheet.			

Verbal Boundary Description (Describe the boundaries of the property on a continuation sheet.)

Boundary Justification (Explain why the boundaries were selected on a continuation sheet.)

11. Form Prepared By

Name/Title: Gene A. Ford, Architectural Historian; Susan Enzweiler, AHC Historian; Trina Binkley, AHC Reviewer

Organization: The University of Alabama, Office of Archaeological Services Date: September 9, 1997

Street & Number: 13075 Moundville Archaeological Park Telephone: (205) 348-7774

City or Town: Moundville State: Alabama Zip Code: 35474

Lustron House
Name of Property

Jefferson County, Alabama
County and State

Additional Documentation

Submit the following items with the completed form:

Continuation Sheets

Maps

A USGS map (7.5 or 15 minute series) indicating the property's location.

A sketch map for historic districts and properties having large acreage or numerous resources.

Photographs

Representative black and white photographs of the property.

Additional items (Check with the SHPO or FPO for any additional items)

Property Owner

(Complete this item at the request of the SHPO or FPO.)

Name: Shade Valley Apartments, Inc.

Street & Number: P.O. Box 590125 Telephone:

City or Town: Birmingham State: Alabama Zip Code: 35259

United States Department of the Interior
National Park Service

NATIONAL REGISTER OF HISTORIC PLACES
CONTINUATION SHEET

Section 7 Page 1

Lustron House
Name of Property

Jefferson County, Alabama
County and State

The Lustron House, located in Birmingham, Jefferson County, Alabama, is a one story, metal, prefabricated house. Built in 1949, the house features a metal front gable roof. Exterior siding consists of 2 ft. square porcelain enamelized metal panels. Three openings, two windows and a door, punctuate the front facade of the house. Two windows pierce each of the north and south sides of the all metal house. Fenestration on the rear facade includes three aluminum frame windows and a door. The home rests on a concrete foundation. Inside, the Lustron features metal wall and ceiling panels and built in cabinets, shelves, and a vanity. The Lustron House, a fine example of the two bedroom Newport model (the only such model in Alabama), retains a high degree of integrity and is in excellent condition.

The Lustron House is situated on a 50 ft x 218 ft lot in a post World War II subdivision of Birmingham, Alabama. The all metal prefab is surrounded by numerous wood frame minimal traditional cottages and brick ranches. The Newport model measures 23 ft x 31 ft and resembles the quintessential ranch house with its low profile, gable roof, and sleek rectangular configuration. One must make a double take to realize that this prefabricated house is slightly different than its neighbors. A scattering of foliage embellishes the associated yard.

A front gable roof of metal panels crowns the Lustron House. The panels are fashioned to imitate the look of ceramic tiles. Painted brown, the porcelain enamelized metal panels are bolted to metal roof trusses. Vertical metal panels cover the gable ends. Attached to the roof and extending along the north side is a metal gutter.

The exterior skin of the prefabricated dwelling consists of porcelain enamelized panels. Painted a permanent gray, the panels measure 2 ft. square. The gray finish of the exterior is factory produced and represents one of the seven basic stock colors of the Lustron palette. There are a few signs of fading at the gable ends; otherwise the Lustron House appears to be free of rust, fading, and other deleterious effects from the elements.

Three openings, two windows and a door, constitute the fenestration of the front facade. Measuring 6 ft x 8 ft, the larger of the two window openings features a fixed, central, plate glass window flanked on either side by a four-light casement. The frame is constructed of aluminum. The second window measures 4 ft square and is fitted with a six light casement. At the southeast corner of the house is the entry door. It is constructed of metal. The door and larger of the two windows coincide with the living room while the smaller window with the front bedroom.

Two window openings are cut into the south wall of the prefabricated house. The eastern most window is a duplicate of that of the other living room window. Measuring 4 ft square, the other opening has a six light casement. This window is situated above the kitchen sink.

Two rectangular openings pierce the north wall of the Lustron House. They each feature six light casement windows; the windows measure 4 ft square and correspond to the two bedrooms.

Fenestration on the rear elevation of the Lustron House consists of four openings. One is fitted with a metal door that leads to the kitchen. The northern most window opening measures 4 ft square and is fitted with a six light casement window. It allows light to permeate the rear bedroom. The other two windows feature three light casements

United States Department of the Interior
National Park Service

NATIONAL REGISTER OF HISTORIC PLACES
CONTINUATION SHEET

Section 7 Page 2

Lustron House
Name of Property

Jefferson County, Alabama
County and State

casement window. It allows light to permeate the rear bedroom. The other two windows feature three light casements measuring 2 ft x 4 ft. One of these windows coincides with the bathroom while the other with the utility room.

The interior of the Lustron House appears much as it did when it was erected in 1949. The ceiling and wall panels have not been covered or replaced with sheetrock, wood paneling, or other nonoriginal material. Emitting from the porcelain enamelized panels is a lustrous sheen that glows as much as the day the panels were removed from the Lustron Corporation plant ovens in Columbus, Ohio. Throughout the interior, there is linoleum flooring.

Intact in the interior of the house is an array of built-in creature comforts. Metal cabinets line the walls of the kitchen. The original furnace located in the utility room gave out a number of years ago; it has been replaced with a contemporary heating unit. Metal closets are also featured in the other bedroom.

Archaeological Component

Although no formal archaeological survey has been conducted, there is the potential for subsurface remains.

United States Department of the Interior
National Park Service

NATIONAL REGISTER OF HISTORIC PLACES
CONTINUATION SHEET

Section 8 Page 3

Lustron House
Name of Property

Jefferson County, Alabama
County and State

Significance

The Lustron House meets the standards established by Criterion C for listing in the National Register of Historic Places and falls under the "Lustron Houses in Alabama" MPS. The Lustron House is significant in the areas of architecture and engineering for its associations with the prefabricated housing industry and nation wide housing shortage immediately following World War II. The Lustron House rates as an outstanding example of the component part technology and all steel construction that the Lustron Corporation utilized in the manufacture of its prefabricated houses from 1946 to 1950. The prefabricated house is the sum total of a critically acclaimed engineering process that included a state of the art factory, production line, storage and distribution system, and marketing strategy. Additionally, the Lustron House embodies the distinct characteristics of post World War II architecture, such as an overall design that was at once contemporary and historic, durability, easy maintenance, and built in creature comforts. It is historically linked with Realty Investment, the dealer of Lustron Houses in Birmingham, which played a critical role in sales and dissemination of information. As one of only eleven extant Lustrons in the state of Alabama, the all metal prefab is part of a small yet significant group of houses that represent the development of prefabricated housing in the state. The house is the only two bedroom Newport model in the state. As Lustron promotional information boasted, the Lustron House has retained a high degree of its original appearance through its history and is likely to do so for the next half century as well.

Historical Summary

In terms of its individual history, the metal dwelling is one of three extant Lustron Houses in Birmingham, Alabama. The house was one of three Lustrons marketed by Realty Investment. Realty Investment owned the Lustron distribution rights for Birmingham (Lustron Corporation 1950). The Lustron House is located approximately five miles from the two Lustrons on Cahaba Road. The house is the only two bedroom Newport model in Alabama.

According to the Alabama Property Record Card (APRC), Shade Valley Apartments has owned the Lustron since August 31, 1973. The Lustron house currently serves as rental property.

United States Department of the Interior
National Park Service

NATIONAL REGISTER OF HISTORIC PLACES
CONTINUATION SHEET

Sections 2,10 Page 4

Lustron House
Name of Property

Jefferson County, Alabama
County and State

Bibliography

Alabama Property Record Card. Tax document maintained on file at the Jefferson County Courthouse,
Birmingham, Alabama. 1997.

Lustron Corporation. Dealer Performance Report. Columbus. 1950.

Verbal Boundary Description

The boundary of the Lustron House is demarcated in Figure 2, which is derived from Jefferson County Tax
Map #29-00-14-04-12.

Boundary Justification

The delineated boundaries include the house and lot historically associated with the Lustron House located
at 430 Columbiana Road, Birmingham, Alabama.

United States Department of the Interior
National Park Service

NATIONAL REGISTER OF HISTORIC PLACES
CONTINUATION SHEET

Section Photographs Page 5

Lustron House
Name of Property

Jefferson County, Alabama
County and State

Photographs

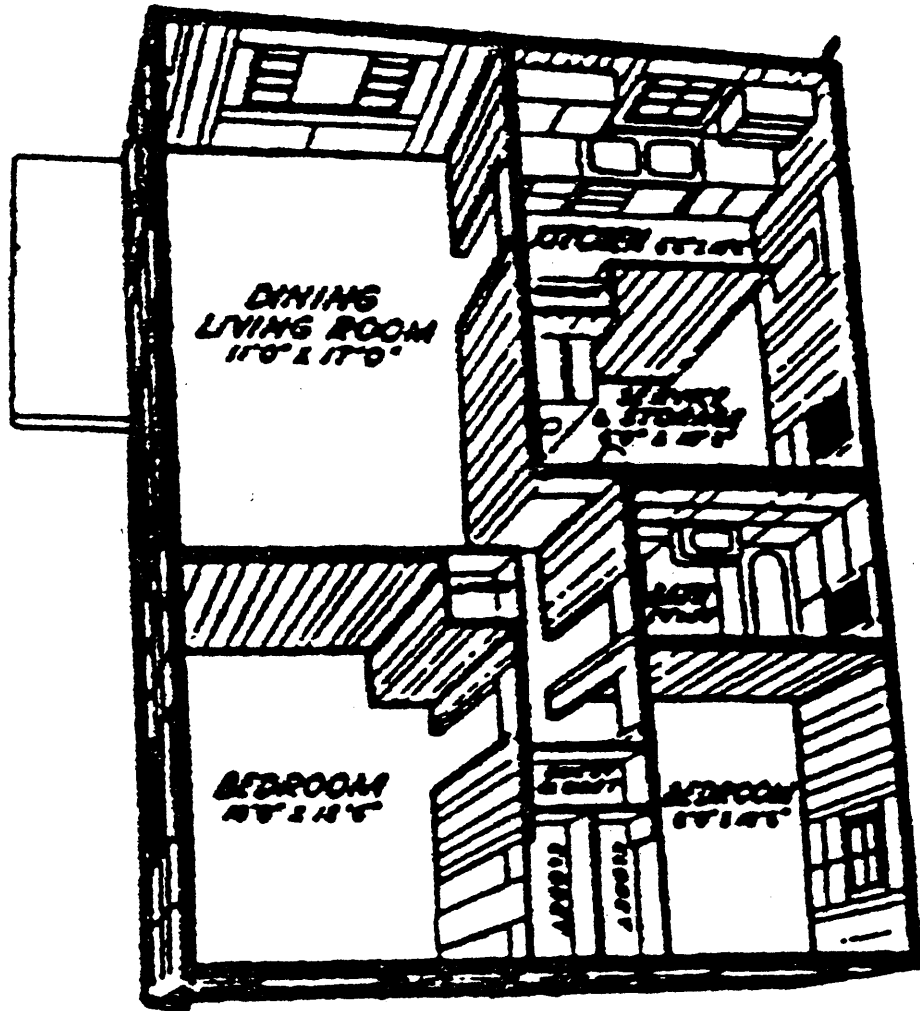
Lustron House
Birmingham, Jefferson County, Alabama

Photos By: Gene A. Ford
Office of Archaeological Services
Moundville, Alabama 35474

Negatives: Alabama Historical Commission
468 South Perry Street
Montgomery, Alabama 36130-0900

Date: December 26, 1996

1. Front and North Elevations.
2. Rear Elevation.



Floor plan,
Newport two-bedroom
model.

Figure 1.

LUSTRON HOUSE, JEFFERSON COUNTY, ALABAMA