

510



OMB No. 10024-0018

United States Department of the Interior
National Park Service

National Register of Historic Places
Registration Form

This form is for use in nominating or requesting determinations for individual properties and districts. See instructions in *How to Complete the National Register of Historic Places registration Form* (National Register Bulletin 16A). Complete each item by marking "x" in the appropriate box or by entering the information requested. If an item does not apply to the property being documented, enter "N/A" for "not applicable." For functions, architectural classification, materials, and areas of significance, enter only categories and subcategories from the instructions. Place additional entries and narrative items on continuation sheets (NPS Form 10-900a). Use a typewriter, word processor, or computer, to complete all items.

1. Name of Property

historic name Fairmount Neighborhood Historic District

other names/site number N/A

2. Location

street & number Roughly bounded by Taylor Street, Pennsylvania Avenue, Maple Street, and Florida Avenue

N/A ☐ not for publication

city or town Bristol

N/A ☐ vicinity

state Tennessee code TN county Sullivan code 163 zip code 37620

3. State/Federal Agency Certification

As the designated authority under the National Historic Preservation Act, as amended, I hereby certify that this ☒ nomination ☐ request for determination of eligibility meets the documentation standards for registering properties in the National Register of Historic Places and meets the procedural and professional requirements set for in 36 CFR Part 60. In my opinion, the property ☒ meets ☐ does not meet the National Register criteria. I recommend that this property be considered significant ☐ nationally ☐ statewide ☒ locally. (See continuation sheet for additional comments.)

E. Patrick McAntigen, Jr.

June 10, 2010

Signature of certifying official/Title

Date

State Historic Preservation Officer, Tennessee Historical Commission

State or Federal agency and bureau

In my opinion, the property ☐ meets ☐ does not meet the National Register criteria. (☐ See Continuation sheet for additional comments.)

Signature of certifying official/Title

Date

State or Federal agency and bureau

4. National Park Service Certification

I hereby certify that the property is:

☒ entered in the National Register.

☐ See continuation sheet

☐ determined eligible for the National Register.

☐ See continuation sheet

☐ determined not eligible for the National Register

☐ removed from the National Register.

☐ other (explain:)

Signature of the Keeper

Date of Action

Edson H. Beall

7-30-10

Fairmount Neighborhood Historic District

Name of Property

Sullivan County, TN

County and State

5. Classification**Ownership of Property**

(Check as many boxes as apply)

- ☒ private
☐ public-local
☐ public-State
☐ public-Federal

Category of Property

(Check only one box)

- ☐ building(s)
☒ district
☐ site
☐ structure
☐ object

Number of Resources within Property

(Do not include previously listed resources in count)

Contributing

Noncontributing

403

76

buildings

4

sites

structures

objects

407

76

Total

Name of related multiple property listing

(Enter "N/A" if property is not part of a multiple property listing.)

N/A

Number of Contributing resources previously listed in the National Register

1

6. Function or Use**Historic Functions**

(Enter categories from instructions)

DOMESTIC: single dwelling

Multiple dwelling

Current Functions

(Enter categories from instructions)

DOMESTIC: single dwelling

multiple dwelling

7. Description**Architectural Classification**

(Enter categories from instructions)

Craftsman, Colonial Revival, Queen Anne, Minimal

Traditional, Ranch

Materials

(Enter categories from instructions)

foundation Stone, Concrete, Brick, Concrete Block

walls Wood, Brick, Stucco, Aluminum, Vinyl

roof Asphalt Shingles, Slate

other Wood

Narrative Description

(Describe the historic and current condition of the property on one or more continuation sheets.)

United States Department of the Interior
National Park ServiceNational Register of Historic Places
Continuation SheetSection number 7 Page 1

Fairmount Neighborhood Historic District, Sullivan County, Tennessee

Narrative Description: The Fairmount Neighborhood developed over a period of about 75 years, beginning in the late 1870s, with the sale of land that was part of the original King family's Lynwood Plantation. The area of land that makes up the Fairmount Neighborhood Historic District encompasses approximately 164 acres. The neighborhood is located slightly southeast and within one mile of downtown Bristol. The district is roughly bounded by Taylor Street to the north, Florida Avenue to the east, Maple Street to the south, and Pennsylvania Avenue to the west. The building stock ranges from about the 1890s to the 1950s and is primarily residential.

477 properties were inventoried for this nomination. The breakdown of contributing and non-contributing resources is as follows.

376 contributing *primary resources*
28 contributing *outbuildings*
4 contributing *vacant lots*

76 non-contributing *primary resources*

Total Contributing: 404 structures and 4 vacant lots

The building stock in the district has a high degree of retention of original materials, workmanship, design, setting, and feeling. The majority of contributing resources have little or no modification from their original design intent and the majority of the building stock ranges between excellent to good condition.

The design of the neighborhood is based on a typical configuration of tightly clustered lots that are consistently narrow along their street frontage, roughly averaging about 65 feet. The lot depths varies with an average of about 180 feet. The lots are anchored to the primary streets and to the back alleys. Thus the network of streets formed the intersections for daily activities and established the regularity and predictability associated with modern gridded neighborhoods. The primary integrity of design for the neighborhood remains intact with respect to the street and alley patterns, which reflects the original intent of the planners and builders.

The regularity of lot sizes allowed for houses to be placed on the tracts with a setback of about 45 feet on average. As the neighborhood developed, a variety of house styles were deployed, with the earliest being the popular Queen Anne patterns. However, the affordability of housing eventually took precedence in order to attract mid-level wage earners interested in suburban life. To be sure, the popularity of the bungalow style house was sweeping the country as plan books and merchandising catalogues gained in popularity. Thus, the bungalow house offered the appeal of the Craftsman style, while at the same time being an affordable house available in an array of plans.

The architectural character of the neighborhood is defined by its eclectic variations in housing forms that were built over a period of about 75 years. The most popular architectural forms that are represented in the neighborhood are the bungalow, gabled ell, center gable, irregular/asymmetrical, and Cape cottage. Styles include Queen Anne, Colonial Revival, Craftsman, Minimal Traditional, Ranch, and English Cottage Revival.

The southern half of the neighborhood that was owned by the Fairmount Land Company is excluded from the boundaries of this nomination. South of Maple Street represented a division within the Fairmount development that was based on two primary factors. First, the southern portion of Fairmount was contrasted by its steeper sloping topography and much poorer quality of the land. The lots tended to be consistently smaller and many houses were built on lots that were elevated high above the streets. The housing stock was homogenized along the lines of small, three bay, framed structures, and very modest asymmetrical plans void of stylistic influences. Second, the southern Fairmount area developed as a lower class aspect of the neighborhood and it did not share in the vision proposed by

United States Department of the Interior
National Park Service

National Register of Historic Places

Continuation Sheet

Section number 7 Page 2

Fairmount Neighborhood Historic District, Sullivan County, Tennessee

the Reynolds brothers to create a neighborhood for elite citizens living in stately houses. Lower Fairmount should be evaluated separately from the upper Fairmount using a different context for its evaluation.

Glossary of Survey Terms Used for the Inventory and their Composition within the Neighborhood

Bungalow

The term bungalow is used to describe its form, which can be a single story, one-and-one-half story, or two story house characterized by overhanging roofs, multiple windows, and substantial porch features. The bungalow house was routinely built all over America between 1890 and the 1930s. All of the bungalows in the Fairmount Neighborhood are frame construction with brick veneer, weatherboard siding, or a combination of siding materials including wood shake shingles. The predominant roof form is gable, although some are hip. Most of the bungalows have dormers or offset roof planes. Many of the neighborhood's bungalows are single story framed structures with exterior chimneys. The porch roofs span the entire front elevation, ordinarily having wooden columns that rest on brick piers. Often the roof overhang is characterized by knee brackets and the windows (if original) are double hung, divided vertical pane. Often windows are paired or in triplicate form (examples include, 926 Florida, 708 Georgia, and 714 Cypress). A total of 6 houses within the district are referred to as "Airplane Bungalows". They are usually one-and-one-half story houses with a roof elevation that is said to resemble the cockpit of an airplane (example, 717 Pennsylvania Ave). The span of the front porch is usually shorter; however the window patterns (if original) are typical of most historic bungalow houses. Some of the bungalows are two-story structures and they share similarities in porch features, roof overhang, and windows to those that are single story. The foundation materials for all the bungalow types were either brick or beveled continuous concrete block.

Minimal Traditional

The term is used to imply that the house has characteristics of traditional house forms or stylistic influences, but only to a very minimal degree (examples include, 718 Ash, 618 Pennsylvania, 931 Georgia). In Fairmount, the influence of the revival styles, such as Tudor Revival and Colonial Revival are noticeable in certain forms. Overall, the house has a minimal or streamlined appearance. Most of the minimal traditional plans were built between 1925 and 1950. In some cases a revival style influence can be seen, for example in the placement of the chimney, which resembles the English Cottage Revival houses throughout the neighborhood. Otherwise, the structures are modest in scale with little to no detailing. All of the minimal traditional houses are single story, wood framed structures. The cladding ranges between brick veneer, weatherboard, and vinyl siding.

Queen Anne Influenced

Queen Anne houses in Fairmount range from single story cottage plans up to two-and-one-half story estate homes. The form is asymmetrical with complex hip and gable roofs. Many are constructed of wood framing with weatherboard siding, although there are also brick examples. Chimneys are often a defining feature of the house because of their corbelled patterns. The Queen Anne style is often referred to as "Victorian," and it was popular between about 1880 and the 1920s. The front porch is a hallmark feature that usually wraps around one corner of the façade. They were built all over America and tend to reflect a more affluent class of owners (examples include 401 Maryland and 523 Pennsylvania). Many were also built as Queen Anne Cottages. The cottage plans are all single story. The roof has central pyramidal form with offsetting gables. This roof plan is repeated on nearly all of the

United States Department of the Interior
National Park Service

National Register of Historic Places

Continuation Sheet

Section number 7 Page 3

Fairmount Neighborhood Historic District, Sullivan County, Tennessee

Queen Anne influenced houses in the district. The windows vary a great deal from house to house. The porch roof is integral to the style and massing of the house. The two-story form is very common in the neighborhood. Many that resemble this are of frame construction and they lack ornamentation. Nevertheless, the form consists of the pyramidal roof flanked by offset gables. Often the gable ends feature decorative patterns such as fish scale, shake shingles, or herring bone (examples include, 516 Spruce and 329 Taylor).

Ranch Houses

The Ranch style was routinely built during the post World War II era of suburban development. The style was built all over America through the 1950s and remained popular through the 1980s. All of the ranch houses in the neighborhood are single story, rectangular forms. The house has a horizontal profile with little or no exterior detailing. Thus the façade is often plain looking. Often the house is characterized by its split siding where one material defines the lower half of the façade (up to the window sill), while another material will be used from the window ledge to the soffit. Many of the Ranch houses in the neighborhood have interior chimneys. All of the Ranch houses in the neighborhood are constructed of wood framing. Many have metal casement windows and most have a large picture window, which characterizes the ranch plan in general (examples include 712 Georgia and 601 Virginia).

Gable Houses

The gable houses are all of frame construction with variations of siding that include brick veneer and weatherboard. Likewise, they range between single story and two-story plans. In most cases the house type has modest porch roofs over the front entry. The windows vary as single or paired double hung sashes with divided panes. The gabled ell form is characterized by a linear form with a gable ell on one end of the house. Most of the gable ell forms are modest in scale with little or no ornamentation. The plan was popular from the 1870s through the early twentieth century. Likewise, the center gable form features a linear plan with the placement of a gable projection in the center of the roof plane. In many cases the windows are paired, double hung divided panes. Like the ranch houses in the neighborhood, the gable ell and center gable are simplistic in workmanship, design, and materials. The front gable house is a rectangular plan, two-stories, with the front door centered on the gable end. The front gable houses have some Craftsman influences that set them apart as unique. The house is further characterized by the placement of a window or multiple windows in the gable.

Four-Square Houses

The form was popular between 1900 and 1940. It derives its name from the notion that the plan is two stories built in a square plan. The house type was built all over America in both urban and rural areas. The form is characterized by its hip roof configuration with a dormer or pediment along its vertical axis. All of the Four-Square houses in the neighborhood are constructed of wood framing. The front façade is symmetrical with a predictable pattern of double hung windows with divided panes. Some are influenced by either revival or Craftsman styles and they were all built before 1940. The cladding ranges from weatherboards to replacement aluminum and vinyl siding. All of the Four-Square houses are characterized by a single story porch element that spans the entire front façade. In some cases the porch will wrap around one corner of the house. The porch accents the symmetry of the house and often contains stylistic elements such as Classical style columns. Examples include 622 Ash and 435 Taylor.

United States Department of the Interior
National Park Service

National Register of Historic Places

Continuation Sheet

Section number 7 Page 4

Fairmount Neighborhood Historic District, Sullivan County, Tennessee

Irregular/Asymmetrical Houses

The primary character-defining aspect of the house is its lack of symmetry. Many other things about the house type may be recognizable within certain stylistic conventions; however, the house does not contain enough form/stylistic elements to be regarded as anything else. In the cases where the façade is generally flat, the windows and porch elements skew the symmetry to favor one side of the façade or the other. In such an example, the porch spans only three-quarters of the facade and is oriented towards a side addition or the gable end. The house, however, has the feel of a four-square. Others are "Victorian" in their massing, but they lack any significant elements that would definitively place them in the Queen Anne or revival styles that exist within the neighborhood. The lack of symmetry is what gives the house its Victorian era appeal. Many of the irregular forms are located on corner lots. As a result, the house was designed to fit the lot by having two primary facades, each facing the opposing streets. Craftsman elements are subtle to this house but can be seen in the brackets of the soffit and the porch elements. The majority are wood frame houses with brick veneer, weatherboard, or replacement aluminum and vinyl siding. An example includes 328 Taylor.

Cape Cottage

The "cape" house, as they are sometimes called, is a rectangular framed house, often with paired dormers. The scale of the house is usually very modest with no ornamentation. One characteristic of the Cape Cod house form is the centrally located chimney that is often in-line with the front entrance. All of them are constructed of wood framing with variation of siding materials that include brick veneer and weatherboard siding. Variations of the form are observed through the adaptation of a gable ell, porch additions, or other alterations. Nevertheless, the steeply pitched roof, rectangular form, and flush gables are characteristic of the form. Examples include 724 Taylor and 812 Georgia.

Revival Influenced Houses

The revival styles were popular in the early 20th century and continued to influence house plans for the remainder of the century. The popular revival styles in Fairmount are the Colonial, English Cottage, and Dutch Colonial. All of the revival style houses in the Fairmount Neighborhood are frame construction with brick veneer, weatherboard siding, or a combination of siding materials. Windows are characteristically double-hung with divided panes. There are a few houses that are Dutch Colonial Revival. Each are distinguished by their gambrel roof, double-hung sashes located in the dormers with multiple divided panes, and integral porches. Most are two story plans built between 1925 and 1950. There are several Colonial Revival houses. They are characterized by their dormers and the overall symmetry of the façade. They are all constructed of wood framing and the cladding ranges between brick veneer, weatherboard, or replacement aluminum or vinyl siding. There are also a few houses that are the English Cottage Revival style. They are characterized by their steep front gables. They are all wood framed structures clad in brick veneer built before the 1950s. Examples include 711 Taylor, 516 Pennsylvania, and 207 Spruce.

Piano Box

The neighborhood has 3 houses that are referred to as piano box. The form is named after the boxed shaped pianos that were popular in the 19th and early 20th centuries. They are of frame construction and single story with integral porches. They are void of any distinct stylistic influences. Example includes 403/05 Virginia.

United States Department of the Interior
National Park Service

National Register of Historic Places

Continuation Sheet

Section number 7 Page 5

Fairmount Neighborhood Historic District, Sullivan County, Tennessee

Four-Plex

There is 1 four-plex structure in the district (811 Pennsylvania). It is a substantial two story framed building with a symmetrical façade on the front and rear of the building. It retains some Queen Anne influences in its gables and its pressed-pattern metal roof cladding.

Apartments

There are a total of 13 apartment buildings within the neighborhood, of which 1 is contributing. The buildings are multi-unit/multi-family dwellings built of modern materials. 825 Kentucky Avenue is the exception. It is a brick building with some modern additions.

School Building

400 Cypress Avenue is a modern school building currently under construction. It is non-contributing.

Vacant Lots

There are 4 contributing vacant lots to the district because they are part of the historic design and setting of the neighborhood. They appear to be used as parks or open public spaces. See 311 Poplar Street as an example.

Inventory

A survey of the Fairmount Neighborhood was conducted by Fred J. Rogers and R. Glen Payne of Preservation Services and Technology Group, LLC. Resources that are contributing are listed as (C), while non-contributing are listed as (NC). A map of all resources was created using GIS. It includes all contributing and non-contributing resources and it shows the district boundaries. The map is a separate attachment to this nomination.

Criteria used to confer *Contributing* status:

- Contributing buildings must have been constructed prior to 1959;
- They must retain significant aspects of their integrity of location and setting as to demonstrate a strong association with the historic development of the neighborhood;
- Individual houses should retain significant aspects of their historic materials and workmanship with only minimal alterations;
- Structures should retain their original design intent in plan and elevation with only minimal alterations;
- Individual structures should convey a strong sense of integrity of feeling through their collective historic character and their architectural continuity.

Buildings that have undergone a minor degree of change (such as replacement vinyl siding), but that have retained most of their character defining features, such as original rooflines, fenestration, chimneys, and porch elements, are considered to be contributing.

Criteria used to confer *Non-Contributing* status:

- The building was constructed after 1959;
- Major unsympathetic alterations have taken place;

United States Department of the Interior
National Park ServiceNational Register of Historic Places
Continuation SheetSection number 7 Page 6

Fairmount Neighborhood Historic District, Sullivan County, Tennessee

Or if a combination of alterations, when taken together, were inconsistent with the overall historic character of the neighborhood.

Example: If a historic building has lost its original chimneys, has a modern standing-seam metal roof, replacement windows, vinyl siding, and major porch elements have been altered or enclosed – the building would be considered non-contributing.

List of Surveyed Resources by Site Number and Address

Ash Street

1. 609 Ash (C). 2-story, symmetrical 4-bay, frame Minimal Traditional duplex with Dutch Colonial Revival influence built ca. 1940. Exterior walls are original brick veneer. Gambrel roof with flush eaves, replacement asphalt shingles, and no chimney. Windows are original with 2nd-story 4/4 double-hung and 1st-floor 4/1 wood vertical muntin single-hung sashes.
2. 612 Ash (C). 2-story, 3-bay, frame Four-Square house with Colonial Revival influence built ca. 1920. Exterior walls are original brick veneer. Hip roof with box cornice, replacement asphalt shingles, and two exterior brick chimneys. Windows are original 1/1 wood double-hung sash.
3. 613 Ash (C). 1-story, 3-bay, frame gabled-ell house built ca. 1910. Exterior walls are replacement aluminum siding. Cross gable roof with box cornice, replacement asphalt shingles, and two interior brick chimneys. Windows are original 1/1 wood double-hung sash.
4. 617 Ash (C). 1-story, 3-bay, frame gabled-ell house built ca. 1910. Exterior walls are clad in replacement vinyl siding. Cross gable roof with box cornice, replacement asphalt shingles, and no chimney. Windows are replacement 1/1 vinyl double-hung sash.
5. 622 Ash (C). 2-story, symmetrical 3-bay, frame Four-Square house with Colonial Revival influence built ca. 1915. Exterior walls are original weatherboard. Pyramidal roof with box cornice, replacement asphalt shingles, and two interior brick chimneys. Windows are original 1/1 wood double-hung sash.
6. 623 Ash (C). 1-story, 3-bay, frame Minimal Traditional house with bungalow influence built ca. 1940. Exterior walls are replacement vinyl siding. Pyramidal roof with box cornice, replacement asphalt shingles, and one interior brick chimney. Windows are original 1/1 wood double-hung sash.
7. 701 Ash (C). 2-story, 2-bay, frame gabled-ell house built ca. 1910. Exterior walls are replacement aluminum siding. Cross gable roof with box cornice and gable returns, replacement asphalt shingles, and one interior brick chimney. Windows are replacement 1/1 vinyl double-hung sash.
8. 704 Ash (NC--less than fifty years old). 1-story, 3-bay, frame Minimal Traditional house built ca. 1965. Exterior

United States Department of the Interior
National Park ServiceNational Register of Historic Places
Continuation SheetSection number 7 Page 7

Fairmount Neighborhood Historic District, Sullivan County, Tennessee

walls are non-historic vinyl siding. Side gable roof with flush eaves, asphalt shingles, and one exterior brick end chimney. Windows are non-historic with horizontal 2/2 and single-light vinyl fixed picture windows.

9. 705 Ash (C). 1-story, 3-bay, frame Queen Anne Cottage house built ca. 1900. Exterior walls are replacement vinyl siding. Pyramidal roof with box cornice, replacement asphalt shingles, and one parged brick and one interior brick chimney. Windows are replacement 1/1 vinyl double-hung sash. This house is asymmetrical with a pyramidal roof flanked by offsetting gables. It also has a wrap around porch.
10. 713 Ash (C). 1-story, 3-bay, frame Minimal Traditional house with bungalow influence built ca. 1930. Exterior walls are replacement aluminum siding. Hip roof with box cornice, replacement asphalt shingles, and no chimney. Windows are replacement 2/2 vinyl double-hung sash.
11. 716 Ash (C). 1-story, 3-bay, frame Minimal Traditional house built ca. 1960. The foundation is continuous brick. Exterior walls are original aluminum siding. Cross gable roof with flush eaves, replacement asphalt shingles, and one interior brick end chimney. Windows are original 1/1 wood double-hung sash.
12. 717 Ash (NC--less than fifty years old). 1-story, 3-bay, frame cape cottage house built ca. 1975. The foundation is poured concrete. Exterior walls are non-historic aluminum siding. Side gable roof with box cornice, replacement asphalt shingles, and one interior brick chimney. Windows are 1/1 vinyl double-hung sash.
13. 718 Ash (C). 1-story, 3-bay, frame Minimal Traditional house with English Cottage influence built ca. 1940. The foundation is continuous brick. Exterior walls are original brick veneer. Multi-plane/complex roof with steeply pitched gables, flush eaves, replacement asphalt shingles, and no chimney. Windows are original 1/1 wood double-hung sash.
14. 723 Ash (C). 2-story, 2-bay, frame Queen Anne house with Colonial Revival influence built ca. 1910. Exterior walls are replacement aluminum siding. Complex hip and gable roof with box cornice, replacement seamed metal, and no chimney. Windows are original 1/1 wood double-hung sash.

Carolina Avenue

15. 301 Carolina (C). 2-story, 3-bay, frame irregular-plan house with Queen Anne influence built ca. 1900. The foundation is continuous brick. Exterior walls are replacement aluminum siding. Cross gable roof with flush eaves, replacement asphalt shingles, and one exterior brick chimney. Windows are original with fixed and ornamented 4- and 7-light sashes and 1/1 wood double-hung sash. The facade features a wraparound porch.
16. 305 Carolina (C). 2-story, 2-bay, frame irregular-plan house with Queen Anne influence built ca. 1900. The foundation is continuous brick. Exterior walls are replacement aluminum siding. Cross gable roof with flush eaves, replacement pressed/patterned metal, and one interior brick chimney. Windows are original 1/1 wood double-hung sash. This house is characterized by the octagonal projecting bay at the first floor and the oval oculus window in the front gable.

United States Department of the Interior
National Park ServiceNational Register of Historic Places
Continuation SheetSection number 7 Page 8

Fairmount Neighborhood Historic District, Sullivan County, Tennessee

17. 308 Carolina (C). 1-story, 2-bay, frame Queen Anne Cottage house built ca. 1900. The foundation is continuous brick. Exterior walls are replacement aluminum siding. Complex hip and gable roof with box cornice and gable returns, replacement seamed metal, and one interior brick and one exterior brick chimney. Windows are replacement 1/1 aluminum double-hung sash. This house retains its distinctive metal roof with an octagonal peak topped by a finial over the porch. There are returning eaves on the front gable and a hip-roof dormer on the side. The exterior chimney appears to be an addition.
18. 309 Carolina (C). 1-story, symmetrical 3-bay, frame bungalow house built ca. 1925. The foundation is continuous brick. Exterior walls are original weatherboard. Side gable roof with box cornice and gable-end brackets, replacement asphalt shingles, and one exterior brick chimney. Windows are original 3/1 and 1/1 wood double-hung sash.
19. 312 Carolina (C). 1-story, 3-bay, frame Queen Anne Cottage house built ca. 1900. Exterior walls are original weatherboard. Front gable roof with box cornice and gable returns, and one interior brick chimney. Windows are original 1/1 wood double-hung sash with some select replacements. The roof is pressed patterned metal except for the porch which has asphalt shingles. Wood shake shingle cladding on the gables. Full-width porch with round wood columns.
20. 313 Carolina (C). 1-story, symmetrical 4-bay, frame Minimal Traditional duplex with bungalow influence built ca. 1940. The foundation is continuous brick. Exterior walls are original brick veneer. Clipped gable roof with box cornice and gable returns, replacement asphalt shingles, and no chimney. Windows are original 5/1 wood double-hung sash. This house appears to have been built as a duplex and does not show signs of major modifications apart from replacement roof cladding. The slightly-tapered columns and shingled portico gables appear to be influenced by bungalows built in the neighborhood.
21. 316 Carolina (C). 1-story, 3-bay, frame modified center-gable house with bungalow influence built ca. 1920. Exterior walls are replacement vinyl siding. Multi-plane/complex roof with box cornice and gable returns, replacement asphalt shingles, and no chimney. Windows are replacement 1/1 (in dormer) and 6/6 wood double-hung sash. This house is atypical for the neighborhood in its plan and form but appears to be a modified center gable. There are many replacement materials and the front porch has been enclosed by modern materials. The cladding is replacement throughout as are the windows. While this house has undergone significant modifications in terms of materials, its general form is nevertheless recognizable and therefore the building contributes to the district.
22. 320 Carolina (NC--less than fifty years old). 1-story, 3-bay, prefabricated frame gable-front house built ca. 1990. Exterior walls are aluminum siding. Front gable roof with box cornice, seamed metal, and no chimney. Windows are 1/1 metal double-hung sash.
23. 321 Carolina (C). 1-story, 3-bay, frame gable-front house with bungalow influence built ca. 1925. The

United States Department of the Interior
National Park ServiceNational Register of Historic Places
Continuation SheetSection number 7 Page 9

Fairmount Neighborhood Historic District, Sullivan County, Tennessee

foundation is continuous brick. Exterior walls are replacement vinyl siding. Front gable roof with box cornice, replacement asphalt shingles, and one interior brick chimney. Windows are original 1/1 wood double-hung sash.

24. 323 Carolina (NC--less than fifty years old). 1-story, 3-bay, frame Ranch house built ca. 1970. Exterior walls are non-historic brick veneer. Side gable roof with box cornice, replacement seamed metal, and no chimney. Windows are non-historic single-light wood casements.
25. 324 Carolina (C). 1-story, 3-bay, frame bungalow house built ca. 1920. Exterior walls are original wood shingles. Side gable roof with open cornice with exposed rafter ends and elaborated sawn vergeboards, replacement asphalt shingles, and one interior brick chimney. Windows are original with 4/1 and 6/6 wood double-hung sash. The front elevation features a scroll-sawn and incised decorative vergeboard. There is a scroll-sawn railing with heart pattern on the ground floor. The house has beaded spindle brackets and detailing under fascia of porches. Divided light french doors on first and second floors. A primary feature is the shingle cladding, which appears to be original.
26. 400 Carolina (C). 1-story, 4-bay, frame Queen Anne Cottage house built ca. 1900. Exterior walls are original weatherboard. Complex hip and gable roof with box cornice, original asphalt shingles, and two interior brick chimneys. Windows are original 1/1 wood double-hung sash.
27. 403 Carolina (C). 1-story, 4-bay, frame cape cottage house built ca. 1940. The foundation is continuous brick. Exterior walls are replacement vinyl siding. Multi-plane/complex roof with box cornice, replacement asphalt shingles, and one interior brick end chimney. Windows are replacement with one tri-part picture window and paired 6/1 vinyl double-hung sash. Pedimented portico with returning eaves and decorative metal columns.
28. 404 Carolina (C). 1-story, 3-bay, frame Dutch Colonial Revival house built ca. 1925. The foundation is rusticated concrete block. Exterior walls are original weatherboard. Gambrel roof with box cornice, replacement asphalt shingles, and one interior brick chimney. Windows are original 1/1 wood double-hung sash. This building has a bungalow plan but in exterior form appears to be influenced by the Dutch colonial revival style. The roof is a cross-gable and gambrel in both directions. Most historic materials have been retained.
29. 407 Carolina (C). 1-story, 3-bay, frame Minimal Traditional house with bungalow influence built ca. 1930. The foundation is continuous brick. Exterior walls are original brick veneer. Front gable roof with box cornice and gable-end eave brackets, replacement asphalt shingles, and one exterior parged brick chimney. Windows are replacement 6-light vinyl casements.
30. 408 Carolina (C). 2-story, 4-bay, frame front gable house with Queen Ann influence built ca. 1900. The foundation is continuous brick. Exterior walls are replacement vinyl siding. Cross gable roof with box cornice, replacement asphalt shingles, and no chimney. Windows are original 1/1 wood double-hung sash.

United States Department of the Interior
National Park ServiceNational Register of Historic Places
Continuation SheetSection number 7 Page 10
Tennessee

Fairmount Neighborhood Historic District, Sullivan County,

31. 409 Carolina (C). 1-story, symmetrical 3-bay, frame cape cottage house built ca. 1940. The foundation is concrete block. Exterior walls are replacement asbestos shingle. Side gable roof with flush eaves, replacement asphalt shingles, and no chimney. Windows are replacement 1/1 vinyl double-hung sash. Characterized by the two gable-roof dormers that were added to provide for livability in the attic space. The windows appear to be replacements and the chimney has been removed.
32. 410 Carolina (C). 1-story, 3-bay, frame bungalow house built ca. 1920. Exterior walls are replacement vinyl siding. Side gable roof with box cornice and gable-end brackets, replacement asphalt shingles, and one interior parged brick chimney. Windows are mixed original and replacements with 3/1, 6/1 and 1/1 vinyl double-hung sash. This house is recognizable as a bungalow that has undergone modifications including the replacement of all exterior cladding and the partial enclosure of the front porch. Second story windows appear to be original.
33. 415 Carolina (C). 1-story, symmetrical 3-bay, frame bungalow house built ca. 1920. The foundation is continuous brick. Exterior walls are original brick veneer. Side gable roof with box cornice and gable end brackets, replacement asphalt shingles, and one exterior brick chimney. Windows are replacement and are a combination of 8/1 single-hung (1st floor) and one 12/1 flanked by 9/1 vinyl double-hung sash.
34. 416 Carolina (NC--less than fifty years old). 1-story, 3-bay, frame Minimal Traditional house with bungalow influence built ca. 2000. Exterior walls are original vinyl siding. Front gable roof with box cornice, original asphalt shingles, and no chimney. Windows are original 1/1 vinyl double-hung sash.
35. 417 Carolina (NC). 1-story, 5-bay, frame bungalow house built ca. 1925. The foundation is continuous brick. Exterior walls are replacement vinyl siding. Side gable roof with box cornice and kicked eaves, non-historic seamed metal roof, and no chimney. Windows are non-historic 1/1 wood double-hung sash. This house is non-contributing due to alterations including replacement siding, roofing, and windows. Its chimneys have been removed and the porch columns have been replaced.
36. 418 Carolina (C). 1-story, 3-bay, frame bungalow house built ca. 1925. The foundation is concrete block. Exterior walls are original brick veneer. Side gable roof with box cornice and brackets, replacement asphalt shingles, and one exterior brick chimney. Windows are original paired 4/1 and paired 6/1 vinyl double-hung sash. Front porch with battered columns on brick piers. There is a large, gable-roofed dormer with returning eaves and a second floor porch.
37. 419 Carolina (NC). 1-story, 6-bay, frame Minimal Traditional duplex built ca. 1940. Exterior walls are replacement vinyl siding. Clipped gable roof with box cornice, replacement asphalt shingles, and one parged interior brick chimney. Windows are replacement 1/1 vinyl double-hung sash. This house has undergone major modifications in terms of cladding, roof materials, and windows and doors. Due to the substantial loss of historic materials, this house no longer retains enough integrity to convey its historic significance.
38. 420 Carolina (C). 1-story, 4-bay, frame bungalow house built ca. 1925. The foundation is beveled concrete

United States Department of the Interior
National Park ServiceNational Register of Historic Places
Continuation SheetSection number 7 Page 11
Tennessee

Fairmount Neighborhood Historic District, Sullivan County,

block. Exterior walls are replacement aluminum siding. Hip roof with box cornice, replacement asphalt shingles, and one interior brick chimney. Windows are original 1/1 wood double-hung sash.

39. 421 Carolina (NC). 1-story, 7-bay, frame Piano Box house built ca. 1925. Exterior walls are replacement vinyl siding. Side gable roof with box cornice, replacement asphalt shingles, and one interior brick chimney. Windows are replacement 1/1 wood double-hung sash. This house has replacement siding, roofing, and windows. Due to the substantial loss of historic materials, this house no longer retains enough integrity to convey its historic significance.
40. 429 Carolina (NC--less than fifty years old). 1-story, 5-bay, frame Ranch house built ca. 1965. The foundation is continuous brick. Exterior walls are non-historic vinyl siding. Side gable roof with box cornice, replacement asphalt shingles, and no chimney. Windows are non-historic 6/6 vinyl double-hung sash.
41. 435 Carolina (C). 1-story, 3-bay, frame Minimal Traditional house with bungalow influence built ca. 1940. Exterior walls are replacement vinyl siding. Front gable roof with box cornice, replacement asphalt shingles, and one exterior brick chimney. Windows are replacement triple 1/1 vinyl double-hung sash.
42. 439 Carolina (C). 1-story, 3-bay, frame bungalow house built ca. 1925. Exterior walls are original brick veneer. Front gable roof with box cornice, replacement asphalt shingles, and one interior and one exterior brick chimney. Windows are original paired 1/1 vinyl double-hung sash. Replacement vinyl in the gable ends.
43. 500 Carolina (C). 1-story, side-entry 2-bay, frame Minimal Traditional house with bungalow influence built ca. 1940. The foundation is beveled concrete block. Exterior walls are original weatherboard. Cross gable roof with box cornice, replacement asphalt shingles, and one exterior brick chimney. Windows are original 3/1 wood double-hung sash.
44. 502 Carolina (NC). 2-story, 2-bay, concrete block irregular-plan storage/warehouse building built ca. 1940. The foundation is concrete block. Exterior walls are original asbestos. Side gable roof with open cornice with exposed rafter ends, non-historic asphalt shingles, and one interior brick chimney. Windows are original 1/1 wood double-hung sash. This structure appears to be a garage or utility building converted by additions into an inhabitable space. While it adds to the eclectic character of the area it lacks sufficient integrity of design and materials and therefore is non-contributing.
45. 504 Carolina (C). 1-1/2 story, 2-bay, frame bungalow house built ca. 1925. Exterior walls are original brick veneer. Side gable roof with box cornice and gable end eave brackets, original asphalt shingles, and one exterior brick chimney. Windows are original 1/1 (2nd-story) and 1st-floor 4/1 wood double-hung sash. The partial stone veneer on the front elevation appears to be a non-historic replacement.
46. 510 Carolina (C). 1-1/2 story, 2-bay, frame bungalow house built ca. 1925. The foundation is concrete block. Exterior walls are original brick veneer. Side gable roof with box cornice and eave brackets, replacement asphalt shingles, and one interior brick chimney. Windows are original 3/1 wood double-hung sash.

United States Department of the Interior
National Park ServiceNational Register of Historic Places
Continuation SheetSection number 7 Page 12
Tennessee

Fairmount Neighborhood Historic District, Sullivan County,

-
47. 515 Carolina (C). 1-story, 4-bay, frame bungalow house built ca. 1925. Exterior walls are original brick veneer. Multi-plane/complex roof with box cornice, replacement asphalt shingles, and one interior brick chimney. Windows are original and combine a wide 6/1 fixed flanked by 3/1 wood double-hung sash.
48. 516 Carolina (C). 1-story, 3-bay, frame bungalow house built ca. 1925. The foundation is concrete block. Exterior walls are original brick veneer. Multi-plane/complex roof with box cornice, replacement asphalt shingles, and one exterior brick chimney. Windows are original 8/1 fixed flanked by 4/1 wood double-hung sash.
49. 518 Carolina (C). 1-story, 3-bay, frame Minimal Traditional house with bungalow influence built ca. 1940. The foundation is poured concrete. Exterior walls are original aluminum siding. Multi-plane cross gable roof with box cornice, replacement asphalt shingles, and no chimney. Windows are original 1/1 wood double-hung sash. This house is characterized by its front projecting gabled bay and full covered porch and has bungalow influences in form.
50. 519 Carolina (C). 1-story, 3-bay, frame bungalow house built ca. 1925. Exterior walls are original brick veneer. Side gable roof with box cornice, replacement asphalt shingles, and one exterior brick chimney. Windows are original 6/1 wood double-hung sash. This house has a gable-roofed dormer characterized by a recessed porch with arch and returning eaves. The front porch has battered wood columns on brick piers and solid brick railing. The second story dormer appears to be clad in a 'spray-on' cementitious plaster.
51. 520 Carolina (C). 1-story, 3-bay, frame bungalow house built ca. 1925. Exterior walls are replacement aluminum siding. Front gable roof with box cornice, replacement asphalt shingles, and one exterior brick chimney. Windows are original 1/1 wood double-hung sash. This house has a gable roof porch with battered columns on brick piers.
52. 523 Carolina (C). 1-story, 3-bay, frame bungalow house built ca. 1925. Exterior walls are original brick veneer. Clipped gable roof with box cornice, replacement asphalt shingles, and one interior brick chimney. Windows are replacement and combine a fixed picture windows flanked by single-light aluminum casements. This house is characterized by its clipped gable roof and the irregular fenestration pattern on the side elevations. Cladding on the second story is replacement vinyl.
53. 601 Carolina (NC--less than fifty years old). 1-story, 5-bay, frame Ranch house built ca. 1975. Exterior walls are non-historic brick veneer. Hip roof with a box cornice, replacement asphalt shingles, and one interior brick chimney. Windows combine fixed picture windows flanked by non-historic single-light wood casements.
54. 615 Carolina (NC--less than fifty years old). 2-story, 7-bay, frame apartment/multifamily building built ca. 1985. Exterior walls are vinyl siding. Side gable roof with box cornice, original asphalt shingles, and no chimney. Windows are original 6/1 vinyl double-hung sash.

United States Department of the Interior
National Park ServiceNational Register of Historic Places
Continuation SheetSection number 7 Page 13
Tennessee

Fairmount Neighborhood Historic District, Sullivan County,

55. 706 Carolina (NC--less than fifty years old). 2-story, 7-bay, frame apartment/multifamily building built ca. 1985. The foundation is poured concrete. Exterior walls are vinyl siding. Multi-plane/complex roof with box cornice, original asphalt shingles, and no chimney. Windows are original 4/4 vinyl double-hung sash.
56. 715 Carolina (NC--less than fifty years old). 1-story, 3-bay, frame Minimal Traditional house built ca. 1965. Exterior walls are original brick veneer. Side gable roof with box cornice, replacement asphalt shingles, and one interior brick chimney. Windows are original 6/6 vinyl double-hung sash.
57. 716 Carolina (NC--less than fifty years old). 2-story, 4-bay, frame apartment/multifamily building built ca. 1985. Exterior walls are original wood siding. Multi-plane/complex roof with box cornice, replacement asphalt shingles, and two exterior wood-clad chimneys. Windows are original 8/1 wood double-hung sash.
58. 717 Carolina (C). 1-story, 4-bay, frame bungalow house with built ca. 1925. Exterior walls are original brick veneer. Multi-plane/complex roof with box cornice, replacement asphalt shingles, and one interior brick chimney. Windows are original 1/1 and fixed light with 4-light transom wood double-hung sash. This single-story variation of a bungalow is nearly identical in plan and form to the house at 516 Carolina.
59. 723 Carolina (NC--less than fifty years old). 1-story, 5-bay, frame Minimal Traditional house built ca. 1950. Exterior walls are original brick veneer. Cross gable roof with box cornice, original asphalt shingles, and one central interior brick chimney. Windows are original and are a combination of 1/1 and fixed single-light wood fixed single-lights flanked by double-hung sash.
60. 727 Carolina (C). 1-story, 4-bay, frame Minimal Traditional house built in the period ca. 1950. Exterior walls are original brick veneer. Side gable roof with box cornice, replacement asphalt shingles, and one exterior brick chimney. Windows are original 1/1 wood double-hung sash.
61. 1000 Carolina (C). 1-1/2 story, 4-bay, frame Minimal Traditional house with English Cottage Revival influence built ca. 1925. Exterior walls are stucco over an original brick veneer. Multi-plane cross gable roof with flush eaves, replacement asphalt shingles, and one interior brick chimney. Windows are original mixed 4/4, 6/6, and 8/8 single and wood double-hung sash.
62. 1004 Carolina (C). 1-story, 4-bay, frame cape cottage house built ca. 1940. Exterior walls are original brick veneer. Side gable roof with flush eaves, replacement asphalt shingles, and one exterior brick end chimney. Windows are replacement paired and single 6/6 vinyl double-hung sash.

Cypress Street

63. 300 Cypress (C). 1-story, 3-bay, frame Queen Anne Cottage house built ca. 1910. Exterior walls are replacement vinyl siding. Complex hip and gable roof with box cornice, replacement asphalt shingles, and two interior brick chimneys. Windows are replacement 1/1 vinyl double-hung sash.

United States Department of the Interior
National Park ServiceNational Register of Historic Places
Continuation SheetSection number 7 Page 14
Tennessee

Fairmount Neighborhood Historic District, Sullivan County,

64. 304 Cypress (C). 1-story, 3-bay, frame center-gable house with bungalow influence built ca. 1925. Exterior walls are replacement vinyl siding. Hip roof with box cornice, replacement asphalt shingles, and no chimney. Windows are replacement 1/1 vinyl double-hung sash. Facade is characterized by single dormer and hip-roofed porch with four battered columns on brick piers.
65. 305 Cypress (NC--less than fifty years old). 2-story, 4-bay, frame apartment/multifamily building built ca. 1985. The foundation is poured concrete. Exterior walls are vinyl siding. Side gable roof with box cornice, original asphalt shingles, and no chimney. Windows are original 1/1 vinyl double-hung sash.
66. 306 Cypress (C). 1-story, 4-bay, frame cape cottage house built ca. 1945. Exterior walls are replacement asbestos. Side gable roof with flush eaves, replacement asphalt shingles, and one interior brick chimney. Windows are original 6/6 wood double-hung sash.
67. 313 Cypress (NC--less than fifty years old). 2-story, 4-bay, frame apartment/multifamily building built ca. 1985. Exterior walls are original brick veneer. Side gable roof with box cornice, original asphalt shingles, and no chimney. Windows are original 1/1 wood double-hung sash.
68. 400 Cypress (NC--less than fifty years old). This site is the location of the former Fairmount School. The original school has been demolished and a new school is currently under construction.
69. 401 Cypress (NC--less than fifty years old). 2-story, 4-bay, frame apartment/multifamily building built ca. 1985. Exterior walls are original brick veneer. Side gable roof with box cornice, original asphalt shingles, and no chimney. Windows are original 1/1 wood double-hung sash.
70. 405 Cypress (NC--less than fifty years old). 2-story, 4-bay, frame apartment/multifamily building built ca. 1985. Exterior walls are original brick veneer. Side gable roof with box cornice, original asphalt shingles, and no chimney. Windows are original 1/1 vinyl double-hung sash.
71. 409 Cypress (NC--less than fifty years old). 2-story, 4-bay, frame apartment/multifamily building built ca. 1990. Exterior walls are original brick veneer. Side gable roof with box cornice, original asphalt shingles, and no chimney. Windows are original 1/1 vinyl double-hung sash.
72. 602 Cypress (C). 1-story, 3-bay, frame bungalow house with Craftsman influence built ca. 1925. The foundation is continuous brick. Exterior walls are original weatherboard. Front gable roof with box cornice and gable brackets, replacement asphalt shingles, and one exterior brick chimney. Windows are replacement 1/1 vinyl double-hung sash.
- Garage. 1-story, 1-bay, asbestos siding, gable roof (C).

73. 608 Cypress (C). 1-story, 3-bay, frame bungalow house with Craftsman influence built ca. 1925. The

United States Department of the Interior
National Park ServiceNational Register of Historic Places
Continuation SheetSection number 7 Page 15
Tennessee

Fairmount Neighborhood Historic District, Sullivan County,

foundation is continuous brick. Exterior walls are replacement aluminum siding. Side gable roof with box cornice and side-gable brackets, replacement asphalt shingles, and one exterior brick chimney. Windows are original 1/1 wood double-hung sash.

Garage. 1-story, 1-bay, vinyl siding, gable roof (C).

74. 612 Cypress. Vacant Lot.

75. 713 Cypress (C). 1-story, 3-bay, frame bungalow house with Craftsman influence built ca. 1925. The foundation is continuous brick. Exterior walls are replacement asbestos. Front gable roof with box cornice, replacement asphalt shingles, and one exterior brick chimney. Windows are original 3/1 wood double-hung sash. Gable extends to form front porch with decorative metal columns.

76. 714 Cypress (C). 1-story, 3-bay, frame bungalow house with Craftsman influence built ca. 1925. Exterior walls are original wood shake shingles. Side gable roof with box cornice and side-gable brackets, replacement asphalt shingles, and no chimney. Windows are original triple 3/1 wood double-hung sash.

Florida Avenue

77. 601 Florida (C). 1-story, 3-bay, frame bungalow house built ca. 1925. The foundation is continuous brick. Exterior walls are original weatherboard. Front gable roof with box cornice and gable brackets, replacement asphalt shingles, and no chimney. Windows are original 6/1 wood double-hung sash.

78. 604 Florida (C). 2-story, 2-bay, frame airplane bungalow house built ca. 1925. The foundation is continuous brick. Exterior walls are original weatherboard. Side gable roof with box cornice and gable brackets, replacement asphalt shingles, and one interior parged brick chimney. Windows are original quadruple and triple 4/1 wood double-hung sash.

79. 608 Florida (C). 1-story, 3-bay, frame bungalow house built ca. 1925. The foundation is continuous brick. Exterior walls are original wood shingles. Front gable roof with box cornice and gable brackets, replacement asphalt shingles, and one exterior brick chimney. Windows are original 3/1 wood double-hung sash.

80. 612 Florida (C). 1-story, 3-bay, frame bungalow house built ca. 1925. The foundation is continuous brick. Exterior walls are original wood shingles. Front gable roof with box cornice and gable brackets, replacement asphalt shingles, and no chimney. Windows are original 1/1 and 4/1 wood double-hung sash.

81. 617 Florida (C). 1-story, 3-bay, frame Queen Anne influenced house built ca. 1900. Exterior walls are replacement aluminum siding. Complex clipped pyramidal and gable roof with box cornice, replacement asphalt shingles, and two interior brick chimneys. Windows are original with a gable 1/1 Palladian and 1/1 wood double-hung sash. Off-center entry with a wrap-around porch.

82. 619 Florida (C). 1-story, 3-bay, frame bungalow house built ca. 1925. Exterior walls are original brick veneer.

United States Department of the Interior
National Park ServiceNational Register of Historic Places
Continuation SheetSection number 7 Page 16
Tennessee

Fairmount Neighborhood Historic District, Sullivan County,

Side gable roof with box cornice and gable brackets, replacement asphalt shingles, and one exterior brick chimney. Windows are original paired and triple 3/1 wood double-hung sash.

83. 621 Florida (C). 1-story, 3-bay, frame bungalow house built ca. 1925. The foundation is continuous brick. Exterior walls are original weatherboard. Multi-plane/complex roof with raked open cornice and exposed rafter ends, original asphalt shingles, and one exterior brick chimney. Windows are original 1/1 wood double-hung sash.
84. 622 Florida (C). 2-story, 3-bay, frame Queen Anne house built ca. 1890. The foundation is wet-laid stone. Exterior walls are replacement aluminum siding. Gable on hip roof with box cornice, original pressed/patterned metal, and one interior brick chimney. Windows are original 1/1 wood double-hung sash.
85. 623 Florida (C). 2-story, 3-bay, frame Four-Square house built ca. 1910. Exterior walls are replacement vinyl siding. Hip roof with box cornice, replacement asphalt shingles, and one interior brick chimney. Windows are replacement 6/6 vinyl double-hung sash.
86. 712 Florida (C). 1-story, 4-bay, frame English Cottage Revival house built ca. 1930. Exterior walls are original brick veneer. Cross gable roof with steeply pitched gable, box cornice and gable brackets, replacement asphalt shingles, and one exterior brick chimney. Windows are original paired and triple 4/1 wood double-hung sash.
87. 716 Florida (C). 1-story, 3-bay, frame English Cottage house built ca. 1930. Exterior walls are original brick veneer. Clipped gable roof with box cornice, replacement asphalt shingles, and one exterior brick chimney. Windows are original 8-light casements and 6/1 wood double-hung sash.
88. 720 Florida (C). 1-story, 3-bay, frame bungalow house with Craftsman influence built ca. 1920. The foundation is beveled concrete block. Exterior walls are replacement vinyl siding. Side gable roof with box cornice, replacement asphalt shingles, and one exterior brick chimney. Windows are original 3/1 wood double-hung sash.
89. 730 Florida (C). 1-story, 5-bay, frame Minimal Traditional house built ca. 1950. Exterior walls are original brick veneer. Side gable roof with box cornice, replacement asphalt shingles, and one interior brick chimney. Windows are original 8/1 and paired 6/1 wood double-hung sash.
90. 800 Florida (C). 1-story, 3-bay, frame bungalow house built ca. 1925. Exterior walls are original wood shingle siding. Multi-plane/complex roof with box cornice, replacement asphalt shingles, and one exterior stone chimney. Windows are original 3/1 wood double-hung sash.
- Garage. 1-story, 1-bay, wood shingle siding, gable roof (C).
91. 804 Florida (C). 1-story, 3-bay, frame bungalow house built ca. 1920. The foundation is continuous brick.

United States Department of the Interior
National Park ServiceNational Register of Historic Places
Continuation SheetSection number 7 Page 17
Tennessee

Fairmount Neighborhood Historic District, Sullivan County,

Exterior walls are replacement wood siding. Side gable roof with box cornice, replacement asphalt shingles, and one exterior brick chimney. Windows are replacement 1/1 fixed sash flanked by 1/1 wood double-hung sash.

Garage. 1-story, 1-bay, wood siding, gable roof (C).

92. 808 Florida (C). 1-1/2 story, 2-bay, frame bungalow house with Craftsman influence built ca. 1925. The foundation is continuous brick. Exterior walls are original wood siding. Side gable roof with box cornice and gable-end brackets, replacement asphalt shingles, and one exterior brick chimney. Windows are original 3/1 wood double-hung sash.
93. 816 Florida (C). 1-story, 3-bay, frame bungalow house built ca. 1930. The foundation is beveled concrete block. Exterior walls are replacement vinyl siding. Side gable roof with box cornice, replacement asphalt shingles, and one exterior brick chimney. Windows are replacement 1/1 aluminum double-hung sash.
94. 818 Florida. Vacant lot.
95. 820 Florida (C). 2-story, 3-bay, frame gabled-ell house built ca. 1910. The foundation is concrete block. Exterior walls are original weatherboard. Cross gable roof with box cornice, replacement asphalt shingles, and one interior brick chimney. Windows are original 1/1 wood double-hung sash.
96. 823 Florida (C). 1-story, 3-bay, frame bungalow house built ca. 1920. The foundation is continuous brick. Exterior walls are original weatherboard. Cross gable roof with box cornice, replacement asphalt shingles, and one interior brick chimney. Windows are original paired gable 1/1 and first-floor 1/1 wood double-hung sash. Facade features intersecting gables, projecting bay on front elevation, and a wrap around porch.
97. 900 Florida (C). 2-story, 3-bay, frame Queen Anne house built ca. 1890. The foundation is continuous brick. Exterior walls are replacement vinyl siding. Cross gable roof with box cornice, replacement asphalt shingles, and no chimney. Windows are original 1/1 wood double-hung sash.
98. 901 Florida (C). 1-story, 3-bay, frame Queen Anne Cottage house built ca. 1910. Exterior walls are replacement vinyl siding. Hip roof with box cornice, replacement asphalt shingles, and two interior brick chimneys. Windows are replacement 1/1 vinyl double-hung sash.
99. 904 Florida (C). 1-story, 3-bay, frame Minimal Traditional house built ca. 1945. The foundation is poured concrete. Exterior walls are replacement vinyl siding. Side gable roof with flush eaves, replacement seamed metal, and no chimney. Windows are replacement 1/1 and a fixed picture window flanked by 1/1 vinyl double-hung sash.

Garage. 1-story, 2-bay, wood siding, gable roof (C).

United States Department of the Interior
National Park ServiceNational Register of Historic Places
Continuation SheetSection number 7 Page 18
Tennessee

Fairmount Neighborhood Historic District, Sullivan County,

-
100. 907 Florida (C). 1-story, 4- (originally 3) bay, frame Queen Anne Cottage house built ca. 1900. The foundation is continuous brick. Exterior walls are replacement aluminum siding. Hip roof with box cornice, replacement asphalt shingles, and one interior brick chimney. Windows are original 1/1 wood double-hung sash.
101. 908 Florida (C). 1-story, 3-bay, frame bungalow house with Craftsman influence built ca. 1925. The foundation is beveled concrete block. Exterior walls are replacement vinyl siding. Side gable roof with box cornice, replacement seamed metal, and one parged exterior chimney. Windows are replacement paired 3/1 vinyl double-hung sash.
- Garage. 1-story, 2-bay, wood siding, shed roof (C).
102. 912 Florida (C). 1-1/2 story, 3-bay, frame bungalow house with Craftsman influence built ca. 1925. The foundation is continuous brick. Exterior walls are replacement aluminum siding. Side gable roof with box cornice, replacement asphalt shingles, and one exterior brick chimney. Windows are replacement tripled gable 1/1 and single and paired 1/1 wood double-hung sash.
- Garage. 1-story, 1-bay, wood siding, gable roof (C).
103. 913 Florida (C). 1-story, 3-bay, frame Queen Anne Cottage house built ca. 1910. Exterior walls are replacement vinyl siding. Complex hip and gable roof with box cornice, replacement asphalt shingles, and one exterior brick chimney. Windows are original 1/1 wood double-hung sash.
104. 916 Florida. Vacant lot.
105. 917 Florida (C). 1-story, 3-bay, frame Minimal Traditional house with bungalow influence built ca. 1950. Exterior walls are original brick veneer. Multi-plane/complex roof with box cornice, replacement asphalt shingles, and no chimney. Windows are original horizontal 2/2 aluminum double-hung sash.
106. 923 Florida (C). 1-story, 3-bay, frame Queen Anne Cottage house built ca. 1910. The foundation is continuous brick. Exterior walls are replacement vinyl siding. Complex hip and gable roof with box cornice, replacement asphalt shingles, and no chimney. Windows are original gable oriole and 3/1 wood double-hung sash.
107. 926 Florida (C). 1-story, 3-bay, frame bungalow house with Craftsman influence built ca. 1920. The foundation is continuous brick. Exterior walls are original weatherboard. Hip roof with box cornice, replacement asphalt shingles, and one exterior parged brick chimney. Windows are original paired gable 3-light fixed and first-floor 1/1 wood double-hung sash.
108. 928 Florida (C). 2-story, 3-bay, frame Dutch Colonial Revival house built ca. 1920. The foundation is poured

United States Department of the Interior
National Park ServiceNational Register of Historic Places
Continuation SheetSection number 7 Page 19
Tennessee

Fairmount Neighborhood Historic District, Sullivan County,

concrete. Exterior walls are replacement aluminum siding. Mansard roof with flush eaves, replacement asphalt shingles, and two exterior brick chimneys. Windows are replacement 1/1 wood double-hung sash.

109. 930 Florida (C). 1-1/2 story, 3-bay, frame bungalow house with Craftsman influence built ca. 1925. The foundation appears to be poured concrete but could be parged brick. Exterior walls are original brick veneer. Front gable roof with raked open cornice with gable brackets, replacement asphalt shingles, and one interior brick chimney. Windows are original gable Palladian 3/1 and first-floor 3/1 wood double-hung sash. This house is a pristine example of the Bungalow style. The brackets and windows appear to be original to the structure. The large porch sets the house apart from many of the other Bungalows in the area. It contributes to the eclectic character of the neighborhood.
110. 931 Florida (C). 2-story, 3-bay, frame gabled-ell house built ca. 1900. Exterior walls are replacement aluminum siding. Cross gable roof with box cornice, replacement asphalt shingles, and two interior parged brick chimneys. Windows are original 2/2 wood double-hung sash.
111. 1000 Florida (C). 1-story, 3-bay, frame pyramidal house built ca. 1900. The foundation is beveled concrete block. Exterior walls are replacement aluminum siding. Pyramidal roof with box cornice, original pressed/patterned metal, and one interior brick chimney. Windows are replacement 1/1 wood double-hung sash.
112. 1004 Florida (C). 1-story, 3-bay, frame bungalow house with Craftsman influence built ca. 1925. The foundation is beveled concrete block. Exterior walls are replacement vinyl siding. Front gable roof with open raked cornice and exposed rafters, replacement asphalt shingles, and one exterior brick chimney. Windows are original 5/1 wood double-hung sash.
113. 1005 Florida (NC). 2-story, 2-bay, frame gable-front house built ca. 1910. Exterior walls have brick veneer on the first floor and vinyl siding on the second floor. Portion of original porch has been filled in. Cross gable roof with box cornice, replacement asphalt shingles, and one interior brick chimney. Windows are replacement 1/1 vinyl double-hung sash. Property is non-contributing due to alterations over time.
114. 1008 Florida (C). 1-story, 3-bay, frame bungalow house with Craftsman influence built ca. 1925. The foundation is beveled concrete block. Exterior walls are replacement vinyl siding. Side gable roof with box cornice and gable brackets, replacement asphalt shingles, and one interior brick chimney. Windows are replacement paired 8/1 vinyl double-hung sash.
115. 1010 Florida (C). 1-story, 2-bay, frame Minimal traditional house built ca. 1955. Exterior walls are original brick veneer. Hip roof with box cornice, replacement asphalt shingles, and no chimney. Windows are replacement 6/6 vinyl double-hung sash.
116. 1011 Florida (C). 1-story, 2-bay, frame bungalow house built ca. 1925. The foundation is beveled concrete

United States Department of the Interior
National Park ServiceNational Register of Historic Places
Continuation SheetSection number 7 Page 20
Tennessee

Fairmount Neighborhood Historic District, Sullivan County,

block. Exterior walls are replacement aluminum siding. Front gable roof with box cornice and gable brackets, replacement asphalt shingles, and no chimney. Windows are replacement 3/1 aluminum double-hung sash.

117. 1016 Florida (C). 1-story, 3-bay, frame bungalow house built ca. 1925. The foundation is continuous brick. Exterior walls are replacement vinyl siding. Front gable roof with box cornice and gable brackets, replacement asphalt shingles, and two interior brick chimneys. Windows are replacement 1/1 vinyl double-hung sash.
118. 1017 Florida (C). 1-story, 3-bay, frame bungalow house built ca. 1925. The foundation is concrete block. Exterior walls are original wood shingles. Front gable roof with box cornice, replacement asphalt shingles, and two exterior brick chimneys. Windows are original paired and single 6/1 vinyl double-hung sash.
119. 1019 Florida (C). 1-story, 3-bay, frame bungalow house built ca. 1925. The foundation is concrete block. Exterior walls are replacement vinyl siding. Front gable roof with box cornice, replacement asphalt shingles, and no chimney. Windows are replacement paired and single 1/1 vinyl double-hung sash.
120. 1020 Florida (NC). 1-story, 4-bay, frame bungalow house built ca. 1925. The foundation is continuous brick. Exterior walls are replacement vinyl siding. Cross gable roof with box cornice, replacement asphalt shingles, and one interior and one exterior brick chimney. Windows are replacement 1/1 vinyl double-hung sash. This structure has a significant two-story rear addition, replacement windows and siding. The addition has altered the design intent of the house and is out of scale with the residential character of the adjacent properties. The addition has altered the historic setting of the residence as well. This house does not retain enough historic integrity to contribute to the overall architectural continuity of the neighborhood.
121. 1024 Florida (C). 1-story, 3-bay, frame bungalow house built ca. 1925. The foundation is continuous brick. Exterior walls are replacement aluminum siding. Front gable roof with box cornice and gable brackets, replacement asphalt shingles, and one exterior brick chimney. Windows are original 4/1 wood double-hung sash.
122. 1031 Florida (C). 1-story, 3-bay, frame bungalow house built ca. 1925. The foundation is concrete block. Exterior walls are original wood shingles. Front gable roof with box cornice, replacement asphalt shingles, and one exterior brick chimney. Windows are replacement 1/1 vinyl double-hung sash.
123. 1101 Florida (C). 1-story, 3-bay, frame English Cottage house built ca. 1920. The foundation is continuous brick. Exterior walls are original brick veneer. Cross gable roof with flush eaves, original pressed/patterned metal, and one exterior brick chimney. Windows are original 3/1 wood double-hung sash.

Georgia Avenue

124. 424 Georgia (C). 1-story, 2-bay, frame bungalow house with Craftsman influence built ca. 1925. The

United States Department of the Interior
National Park ServiceNational Register of Historic Places
Continuation SheetSection number 7 Page 21
Tennessee

Fairmount Neighborhood Historic District, Sullivan County,

foundation is continuous brick. Exterior walls are original wood shingles. Multi-plane/complex roof with box cornice and gable peak pendants, replacement asphalt shingles, and one stone shoulder-capped exterior brick chimney. Windows are original triple 4/1 wood double-hung sash. Side entry porch with battered brick columns.

125. 500 Georgia (C). 2-story, 3-bay, frame Dutch Colonial Revival house built ca. 1925. The foundation is continuous brick. Exterior walls are original weatherboard. Gambrel roof with a box cornice, replacement asphalt shingles, and one interior brick chimney. Windows are original 6/6 wood double-hung sash.
126. 503 Georgia (NC--less than fifty years old). 2-story, 7-bay, frame apartment/multifamily building built ca. 1975. Exterior walls are original brick veneer. Side gable roof with box cornice, replacement asphalt shingles, and no chimney. Windows are original 2/2 wood double-hung sash.
127. 508 Georgia (C). 1-story, 3-bay, frame bungalow house with Craftsman influence built ca. 1925. The foundation is continuous brick. Exterior walls are replacement vinyl siding. Side gable roof with box cornice, original asphalt shingles, and one exterior brick chimney. Windows are replacement triple gable 1/1 and first floor fixed flanked by 1/1 vinyl double-hung sash.
128. 512 Georgia (C). 1-1/2 story, 3-bay, frame bungalow house with Craftsman influence built ca. 1925. Exterior walls are original brick veneer. Side gable roof with box cornice and gable brackets, original asphalt shingles, and one exterior brick chimney. Windows are replacement 1/1 vinyl double-hung sash.
129. 514 Georgia (C). 1-1/2 story, 3-bay, frame bungalow house with Craftsman influence built ca. 1925. The foundation is concrete block. Exterior walls are original brick veneer. Side gable roof with box cornice and paired gable brackets, replacement asphalt shingles, and one exterior brick chimney. Windows are original 6/1 wood double-hung sash.
130. 515 Georgia (C). 2-story, 5-bay, frame English Cottage house with Stick influence built ca. 1920. The foundation is continuous brick. Exterior walls are original brick veneer. Cross gable roof with flush eaves, replacement asphalt shingles, and one interior brick chimney. Windows are original 4/4 and paired 6/6 wood double-hung sash.
131. 517 Georgia (C). 1-story, 3-bay, frame Ranch house built ca. 1950. Exterior walls are original brick veneer. Hip roof with box cornice, replacement asphalt shingles, and one exterior brick chimney. Windows are original 1/1 wood double-hung sash.
132. 518 Georgia (C). 2-story, 2-bay, frame gable-front house with Craftsman influence built ca. 1930. Exterior walls are replacement vinyl siding. Front gable roof with a raked box cornice and gable brackets, replacement asphalt shingles, and one exterior brick chimney. Windows are replacement 1/1 vinyl double-hung sash.

United States Department of the Interior
National Park ServiceNational Register of Historic Places
Continuation SheetSection number 7 Page 22
Tennessee

Fairmount Neighborhood Historic District, Sullivan County,

133. 519 Georgia (C). 1-story, 3-bay, frame Minimal Traditional house with English Cottage Revival influence built ca. 1935. Exterior walls are original brick veneer. Multi-plane/complex roof with flush eaves, replacement asphalt shingles, and one exterior brick chimney. Windows are original with fixed single-light flanked by 1/1 wood double-hung sash. The facade is characterized by a square turret over the entryway with a pyramidal roof, and a half-round brick arch. L-shaped Wrap-around porch with round wood columns on brick piers.
134. 523 Georgia (C). 1-story, 3-bay, frame bungalow house built ca. 1925. The foundation is beveled concrete block. Exterior walls are replacement aluminum siding. Side gable roof with box cornice and single gable-peak bracket, replacement asphalt shingles, and one interior brick chimney. Windows are replacement paired sliding and 1/1 vinyl double-hung sash.
135. 601 Georgia (C). 1-1/2 story, 5-bay, frame Colonial Revival house built ca. 1925. Exterior walls are original brick veneer. Side gable roof with box cornice, replacement asphalt shingles, and two exterior brick end chimneys. Windows are replacement single 6/1 and paired 6/1 vinyl double-hung sash.
136. 602 Georgia (C). 2-story, 2-bay, frame bungalow house with Craftsman influence built ca. 1925. The foundation is continuous brick. Exterior walls are original brick veneer. Side gable roof with box cornice and gable brackets, replacement asphalt shingles, and one interior and one exterior brick chimney. Windows are original paired and single 4/1 wood double-hung sash.
137. 604 Georgia (C). 1-story, 3-bay, frame Minimal Traditional house with English Cottage influence built ca. 1930. The foundation is continuous brick. Exterior walls are original brick veneer. Side gable roof with flush eaves, replacement asphalt shingles, and no chimney. Windows are original triple 6/1 wood double-hung sash.
138. 610 Georgia (C). 1-story, 3-bay, frame bungalow house built ca. 1925. The foundation is continuous brick. Exterior walls are original brick veneer. Hip roof with box cornice, replacement asphalt shingles, and one exterior brick chimney. Windows are original triple 2/1 and paired 3/1 wood double-hung sash.
139. 615 Georgia (C). 2-story, 4-bay, frame bungalow house built ca. 1930. Exterior walls are original brick veneer. Side gable roof with raked open cornice with exposed rafter ends, replacement asphalt shingles, and one exterior brick chimney. Windows are original paired 6/6 wood double-hung sash.
140. 619 Georgia (C). 1-story, 3-bay, frame bungalow house built ca. 1925. Exterior walls are original brick veneer. Side gable roof with raked open cornice with exposed rafter ends, replacement asphalt shingles, and one exterior brick chimney. Windows are original and combine a webbed federal arched transom over entryway, dormer 1/1, and first-floor 8/8 wood double-hung sash. Side-entry covered porch.
141. 622 Georgia (C). 2-story, 3-bay, frame Four-Square house built ca. 1915. Exterior walls are original brick

United States Department of the Interior
National Park ServiceNational Register of Historic Places
Continuation SheetSection number 7 Page 23
Tennessee

Fairmount Neighborhood Historic District, Sullivan County,

veneer. Mansard roof with raked open cornice with exposed ornamental sawn rafter ends, replacement asphalt shingles, and one interior brick chimney. Windows are original triple dormer 4/1 and first-floor 12/1 wood double-hung sash.

142. 623 Georgia (C). 2-story, 5-bay, frame Colonial Revival house built ca. 1910. Exterior walls are replacement vinyl siding. Side gable roof with box cornice, replacement asphalt shingles, and one interior brick end chimney. Windows are replacement 6/1 vinyl double-hung sash.
143. 700 Georgia (C). 2-story, 2-bay, frame Queen Anne house built ca. 1890. Exterior walls are replacement vinyl siding. Complex hip and gable roof with box cornice and shed gable eaves, replacement asphalt shingles, and two interior brick chimneys. Windows are original dormer 8-light divided casement, gable arch-topped 1/1 single-hung, and 2/1 wood double-hung sash.
144. 701 Georgia (C). 1-story, 3-bay, frame Queen Anne influenced house built ca. 1900. The foundation is continuous brick. Exterior walls are replacement cementitious/Hardie plank. Multi-plane complex roof with box cornice, replacement asphalt shingles, and two interior brick chimneys. Windows are original second-floor gable arch-topped Palladian and 1st-floor 1/1 wood double-hung sash.
145. 704 Georgia (C). 1-story, 3-bay, frame pyramidal house built ca. 1930. The foundation is continuous brick. Exterior walls are replacement aluminum siding. Hip roof with box cornice, replacement asphalt shingles, and one interior brick chimney. Windows are replacement 1/1 vinyl double-hung sash.
146. 705 Georgia (C). 1-story, 3-bay, frame bungalow house built ca., 1925. Exterior walls are original brick veneer. Side gable roof with a box cornice and gable brackets, replacement asphalt shingles, and one parged interior brick chimney. Windows are original gable end 3/1 Palladian and first-floor 4/1 wood double-hung sash.
147. 708 Georgia (C). 1-story, 3-bay, frame bungalow house with Craftsman influence built ca. 1925. The foundation is continuous brick. Exterior walls are original weatherboard. Hip roof with raked open cornice with sawn decorative rafter tails, replacement asphalt shingles, and one interior and one exterior brick chimney. Windows are replacement attic dormer 17-light latticed, fixed 26-light doorway transom, and triple 9/1 vinyl double-hung sash.
148. 709 Georgia (C). 1-1/2 story, 3-bay, frame bungalow house with Craftsman influence built ca. 1925. The foundation is continuous brick. Exterior walls are replacement aluminum siding. Side gable roof with box cornice, replacement asphalt shingles, and one interior and one exterior brick chimney. Windows are replacement 1/1 vinyl double-hung sash.
149. 712 Georgia (C). 1-story, 5-bay, frame Ranch house built ca. 1950. Exterior walls are replacement asbestos. Side gable roof with flush eaves, replacement asphalt shingles, and no chimney. Windows are original horizontal 2/2 wood double-hung sash.

United States Department of the Interior
National Park ServiceNational Register of Historic Places
Continuation SheetSection number 7 Page 24
Tennessee

Fairmount Neighborhood Historic District, Sullivan County,

-
150. 717 Georgia (C). 1-story, 3-bay, frame bungalow house with Craftsman influence built ca. 1925. Exterior walls are replacement vinyl siding. Side gable roof with box cornice, replacement asphalt shingles, and one parged interior and one parged exterior brick chimney. Windows are original quadruple 8-light fixed (in the shed-roofed dormer) and first-floor 12/1 wood double-hung sash.
151. 719 Georgia (C). 1-1/2 story, 3-bay, frame bungalow house with Craftsman influence built ca. 1925. Exterior walls are original wood shingles. Cross gable roof with raked open cornice and gable brackets, replacement asphalt shingles, and one exterior brick chimney. Windows are original triple 4/4 in gable and first-floor 12/1 wood double-hung sash.
152. 721 Georgia (C). 1-1/2 story, 3-bay, frame bungalow house with Craftsman influence built ca. 1925. The foundation is continuous brick. Exterior walls are original brick veneer. Side gable roof with box cornice and gable brackets, replacement asphalt shingles, and one massive battered exterior brick chimney. Windows are replacement 9/1 vinyl double-hung sash.
153. 728 Georgia (C). Parlett House. 2-story, 4-bay, frame Queen Anne house with Colonial Revival influence built in 1892. Exterior walls are original weatherboard. Complex hip and gable roof with box cornice, original pressed/patterned metal, and two interior stone chimneys. Windows are replacement 1/1 wood double-hung sash. Individually listed in NR 8/18/1983.
154. 800 Georgia (C). 1-story, 3-bay, frame Queen Anne cottage built ca. 1900. The foundation is rusticated concrete block. Exterior walls are original brick veneer. Complex hip and gable roof with box cornice and elaborate gable modillions, replacement asphalt shingles, and two interior brick chimneys. Windows are original gable Palladian with arch top and 1/1 wood double-hung sash. Full-width porch with shed roof and pediment, rusticated stone columns on stone piers, and two side-by-side entry doors with transom.
155. 801 Georgia (C). 2-story, 3-bay, frame irregular-plan house with Queen Anne influence built ca. 1890. The foundation is continuous brick. Exterior walls are replacement vinyl siding. Hip roof with box cornice, original tile, and one interior and one exterior brick chimney. Windows are replacement 16/1 and 8/1 wood double-hung sash.
156. 808 Georgia (C). 2-story, 3-bay, brick/masonry Queen Anne cottage built ca. 1890. The foundation is rusticated concrete block. Exterior walls are original brick. Complex hip and gable roof with box cornice with dentil molding and elaborate gable modillions, replacement asphalt shingles, and two parged interior brick chimneys. Windows are original gable Palladian with arch top and 1/1 (with 8-light leaded transom) wood double-hung sash. Wrap-around porch with pedimented shed roof, paired rusticated stone columns on stone piers, and central entryway with transom.
157. 812 Georgia (C). 1-1/2 story, 5-bay, frame cape cottage house built ca. 1945. Exterior walls are original brick

United States Department of the Interior
National Park ServiceNational Register of Historic Places
Continuation SheetSection number 7 Page 25
Tennessee

Fairmount Neighborhood Historic District, Sullivan County,

veneer. Side gable roof with flush eaves, replacement asphalt shingles, and one interior brick chimney. Windows are original 6/1 wood double-hung sash.

158. 813 Georgia (C). 1-story, 3-bay, frame Queen Anne Cottage house built ca. 1900. The foundation is concrete block. Exterior walls are replacement vinyl siding. Pyramidal roof with box cornice and shed gable eaves, replacement seamed metal, and one interior brick chimney. Windows are replacement 1/1 vinyl double-hung sash.
159. 817 Georgia (C). 1-story, 3-bay, frame Queen Anne Cottage house built ca. 1900. The foundation is continuous brick. Exterior walls are original weatherboard. Pyramidal roof with box cornice, replacement asphalt shingles, and two interior brick chimneys. Windows are original 1/1 wood double-hung sash.
160. 822 Georgia (C). 2-story, 3-bay, frame Queen Anne house with Italianate influence built ca. 1890. The foundation is continuous brick. Exterior walls are replacement vinyl siding. Complex hip and gable roof with box cornice and paired brackets, replacement asphalt shingles, and no chimney. Windows are replacement single and triple 1/1 wood double-hung sash.
161. 823 Georgia (C). 2-story, 3-bay, frame Queen Anne house built ca. 1890. The foundation is continuous brick. Exterior walls are replacement vinyl siding. Complex hip and gable roof with box cornice, original pressed/patterned metal, and one interior brick chimney. Windows are replacement second-story 1/1 and first-floor combination 1/1 and 12/1 wood double-hung sash.
- Garage. 1-story, 2-bay, hip roof, wood siding (C).
162. 900 Georgia (C). 1-story, 3-bay, frame cape cottage house built ca. 1945. Exterior walls are original brick veneer. Side gable roof with box cornice, replacement asphalt shingles, and one interior brick chimney. Windows are replacement 6/6 vinyl double-hung sash.
163. 901 Georgia (C). 1-story, 3-bay, frame Queen Anne Cottage house built ca. 1900. The foundation is continuous brick. Exterior walls are replacement vinyl siding. Complex hip and gable roof with box cornice, replacement asphalt shingles, and one interior brick chimney. Windows are replacement 1/1 wood double-hung sash.
- Garage. 1-story, 1-bay, hip roof, wood siding (C).
164. 905 Georgia (C). 1-1/2 story, 4-bay, frame bungalow house with Craftsman influence built ca. 1925. Exterior walls are original brick veneer. Front gable roof with box cornice and gable brackets, replacement asphalt shingles, and one exterior brick chimney. Windows are original triple 1/1 (in shingled gable) and 1/1 aluminum double-hung sash.

Garage. 1-story, 2-bay, hip roof, brick veneer (C).

United States Department of the Interior
National Park ServiceNational Register of Historic Places
Continuation SheetSection number 7 Page 26
Tennessee

Fairmount Neighborhood Historic District, Sullivan County,

165. 908 Georgia (C). 1-story, 3-bay, frame bungalow house built ca. 1925. The foundation is poured concrete. Exterior walls are replacement vinyl siding. Side gable roof with box cornice, replacement asphalt shingles, and no chimney. Windows are original 5/1 wood double-hung sash.
166. 909 Georgia (C). 1-story, 3-bay, frame bungalow house with Craftsman influence built ca. 1925. The foundation is continuous brick. Exterior walls are replacement vinyl siding. Side gable roof with box cornice, replacement asphalt shingles, and one exterior brick chimney. Windows are original paired 3/1 wood double-hung sash.
- Garage. 1-story, 2-bay, gable roof, vertical plank siding (C).
167. 911 Georgia (C). 2-story, 4-bay, frame English Cottage Revival house built ca. 1925. The foundation is poured concrete. Exterior walls are original brick veneer. Side gable roof with flush eaves, replacement asphalt shingles, and one interior parged brick chimney. Windows are original 6/1 wood double-hung sash.
168. 912 Georgia (C). 1-story, symmetrical 4-bay, frame Ranch duplex built ca. 1950. Exterior walls are original brick veneer. Hip roof with box cornice, replacement asphalt shingles, and one interior brick chimney. Windows are original 6/1 double-hung flanked by 4/1 wood double-hung sash.
169. 918 Georgia (C). 1-story, 4-bay, frame Ranch house built ca. 1950. The foundation is poured concrete. Exterior walls are replacement aluminum siding. Side gable roof with box cornice, replacement asphalt shingles, and one exterior brick chimney. Windows are original 9-light divided metal casements.
170. 929 Georgia (C). 1-story, 4-bay, frame Minimal Traditional house built in the period 1925-1949. The foundation is concrete block. Exterior walls are replacement aluminum siding. Side gable roof with box cornice, replacement asphalt shingles, and one exterior brick chimney. Windows are replacement 6/1 vinyl double-hung sash.
171. 930 Georgia (NC--less than fifty years old). 1-story, 4-bay, frame Ranch house built ca. 1950. Exterior walls are brick veneer. Side gable roof with box cornice, replacement seamed metal, and one interior brick chimney. Windows are triple 1/1 wood double-hung sash.
172. 931 Georgia (C). 1-story, 4-bay, frame Minimal Traditional house with English Cottage Revival influence built ca. 1930. Exterior walls are original brick veneer. Cross gable roof with box cornice, replacement asphalt shingles, and one exterior brick chimney. Windows are original fixed single-light and 4/1 wood double-hung sash.
- Garage. 1-story, 2-bay, gable roof, wood siding (C).
173. 1000 Georgia (C). 2-story, 2-bay, frame Queen Anne house with Colonial Revival influence built ca. 1890.

United States Department of the Interior
National Park ServiceNational Register of Historic Places
Continuation SheetSection number 7 Page 27
Tennessee

Fairmount Neighborhood Historic District, Sullivan County,

The foundation is continuous brick. Exterior walls are original weatherboard. Complex hip and gable roof with box cornice and shed gable eaves, original seamed metal, and one interior brick chimney. Windows are replacement paired 1/1 wood double-hung sash.

174. 1001 Georgia (C). 2-story, 4 (originally 3)-bay, frame gabled-ell house built ca. 1910. Exterior walls are replacement vinyl siding. Cross gable roof with box cornice, replacement asphalt shingles, and no chimney. Windows are original 1/1 wood double-hung sash.

175. 1004 Georgia (C). 1-1/2 story, 2-bay, frame bungalow house with Craftsman influence built ca. 1925. The foundation is continuous brick. Exterior walls are original brick veneer. Side gable roof with box cornice and gable returns, replacement asphalt shingles, and one exterior brick chimney. Windows are replacement quadruple gable 1/1 and first-floor single-light fixed flanked by 1/1 wood double-hung sash.

Kentucky Avenue

176. Kentucky (C). Vacant, treed, park-like lot. This area of the neighborhood is characterized by its natural setting and is commonly used as a park. It contributes on the basis of its setting and feeling.

177. 503 Kentucky (NC--less than fifty years old). 1-story, 3-bay, frame Minimal Traditional house built ca. 1950. Exterior walls are vinyl siding. Side gable roof with box cornice, asphalt shingles, and no chimney. Windows are 1/1 vinyl double-hung sash.

178. 505 Kentucky (NC--less than fifty years old). 1-story, 4-bay, frame Ranch house built ca. 1965. Exterior walls are aluminum siding. Side gable roof with box cornice, replacement asphalt shingles, and no chimney. Windows are single-light metal casements.

179. 508 Kentucky (C). 2-story, 3-bay, frame Dutch Colonial Revival house built ca. 1930. The foundation is continuous brick. Exterior walls are original brick veneer. Gambrel roof with box cornice, replacement asphalt shingles, and one exterior brick end chimney. Windows are original paired 6/1 wood double-hung sash.

180. 515 Kentucky (NC--less than fifty years old). 1-story, 5-bay, frame Ranch house built ca. 1965. Exterior walls are aluminum siding. Side gable roof with box cornice, replacement asphalt shingles, and no chimney. Windows are paired 1/1 and fixed single-light flanked by 1/1 vinyl double-hung sash.

181. 518 Kentucky (C). 2-story, 4-bay, frame Colonial Revival house built ca. 1930. Exterior walls are replacement aluminum siding. Distinctive clipped gable roof with partial gambrels, box cornice, replacement asphalt shingles, and one interior brick chimney. Windows are original 6/1 wood double-hung sash. Pedimented portico over the center entryway with paired columns.

182. 523 Kentucky (C). 1-story, 3-bay, frame Minimal Traditional house built ca. 1940. Exterior walls are original

United States Department of the Interior
National Park ServiceNational Register of Historic Places
Continuation SheetSection number 7 Page 28
Tennessee

Fairmount Neighborhood Historic District, Sullivan County,

brick veneer. Side gable roof with box cornice, replacement asphalt shingles, and one interior and one exterior brick chimney. Windows are original 6/6 wood double-hung sash. There is a pedimented portico over the center bay with paired columns. There is a wood paneled door with sidelights and a Federal-influenced fan light.

183. 602 Kentucky (C). 1-story, 3-bay, frame airplane bungalow house built ca. 1925. Exterior walls are original weatherboard. Side gable roof with raked open cornice, gable brackets, and exposed rafter ends, replacement asphalt shingles, and one exterior brick chimney. Windows are original 9/1 wood double-hung sash. The porch has exposed rafters and posts and substantial brick columns support the porch roof. There is a solid brick railing. The gable ends and dormer are clad in shingles.
184. 606 Kentucky (C). 1-story, 3-bay, frame airplane bungalow house built ca. 1925. Exterior walls are replacement aluminum siding. Side gable roof with raked open cornice, gable brackets, and exposed rafter ends, replacement asphalt shingles, and one exterior brick chimney. Windows are original 3/1 wood double-hung sash.
185. 616 Kentucky (C). 1-1/2 story, 4-bay, frame gable-front house built ca. 1940. Exterior walls are original brick veneer. Front gable roof with box cornice, replacement asphalt shingles, and one interior brick chimney. Windows are original 8/1 wood double-hung sash. There is a shed roof dormer on each side. The house has a hip roofed porch with brick columns on the front elevation. There is a small addition on the rear.
186. 620 Kentucky (C). 2-story, 4-bay, frame Colonial Revival house built ca. 1930. The foundation is continuous brick. Exterior walls are original brick veneer. Side gable roof with box cornice, original slate cladding, and one interior brick end chimney. Windows are original paired and single 1/1 wood double-hung sash. Replacement front door with 8 lights, a transom, and sidelight and an addition to the north. Cast iron railing on the second floor of the porch that appears to be original.
187. 700 Kentucky (C). 1-story, 3-bay, frame gable front house built in the period 1900-1924. Exterior walls are replacement aluminum siding. Clipped gable roof with box cornice, replacement seamed metal, and one exterior brick chimney. Windows are original 4/1 and 5/1 wood double-hung sash.
188. 706 Kentucky (C). 2-story, 3-bay, frame Four-Square house built ca. 1915. Exterior walls are original brick veneer with replacement vinyl in the dormers. Hip roof with box cornice, replacement asphalt shingles, and one exterior brick chimney. Windows are original 4/1 wood double-hung sash.
189. 708 Kentucky (NC--less than fifty years old). 1-story, 3-bay, frame Ranch house built ca. 1970. The foundation is concrete block. Exterior walls are vinyl siding. Side gable roof with flush eaves, asphalt shingles, and no chimney. Windows are 1/1 vinyl double-hung sash.
190. 712 Kentucky (C). 1-story, 3-bay, frame bungalow house built ca. 1925. The foundation is continuous brick.

United States Department of the Interior
National Park ServiceNational Register of Historic Places
Continuation SheetSection number 7 Page 29
Tennessee

Fairmount Neighborhood Historic District, Sullivan County,

Exterior walls are replacement vinyl siding. Front gable roof with box cornice, replacement asphalt shingles, and two interior brick chimneys. Windows are replacement 1/1 vinyl double-hung sash.

191. 716 Kentucky (C). 2-story, 3-bay, frame Queen Anne house built ca. 1890. The foundation is continuous brick. Exterior walls are original weatherboard. Cross gable roof with box cornice, replacement asphalt shingles, and no chimney. Windows are original and combine one first-floor diamond-shaped oriole and otherwise single and paired 1/1 wood double-hung sash. Appears to have undergone a recent rehabilitation. While the roof cladding, windows and door appear to be replacements, the overall form and characterizing features such as the diamond-shaped oculus on the ground floor and the fenestration pattern appear to be unchanged.
192. 719 Kentucky (NC--less than fifty years old). 2-story, 3-bay, frame irregular-plan house built ca. 1980. Exterior walls are vinyl siding. Multi-plane/complex roof with flush eaves, asphalt shingles, and no chimney. Windows are 1/1 vinyl double-hung sash.
193. 720 Kentucky (C). 2-story, 2-bay, frame Queen Anne house built ca. 1890. Exterior walls are replacement aluminum siding. Complex hip and gable roof with a box cornice, replacement asphalt shingles, and one interior brick chimney. Windows are original 1/1 wood double-hung sash. Wrap-around porch addition.
194. 730 Kentucky (C). 1-story, 3-bay, frame gabled-ell house built ca. 1930. The foundation is continuous brick. Exterior walls are replacement aluminum siding. Cross gable roof with box cornice, replacement asphalt shingles, and one interior parged brick chimney. Windows are original with a fixed single-light and 1/1 wood double-hung sash.
195. 800 Kentucky (NC). 1-1/2 story, 3-bay, frame front gable house built ca. 1930. The foundation is beveled concrete block. Exterior walls are replacement wood siding. Front gable roof with box cornice, replacement asphalt shingles, and one interior brick chimney. Windows are original 1/1 wood double-hung sash. This house appears to have been built in the 1940s but has had its roof, front gable, porch, and other minor elements extensively reconstructed. In terms of design and materials, it is no longer suggestive of a historic house of the period and is out of character with the neighborhood.
196. 804 Kentucky (C). 1-story, 2-bay, frame gabled-ell house built ca. 1930. The foundation is beveled concrete block. Exterior walls are replacement aluminum siding. Side gable roof with box cornice, replacement asphalt shingles, and two interior brick chimneys. Windows are original paired 3/1 wood double-hung sash.
197. 806 Kentucky (C). 1-story, 4-bay, frame Minimal Traditional house built ca. 1930. The foundation is beveled concrete block. Exterior walls are original brick veneer. Side gable roof with box cornice, replacement asphalt shingles, and one exterior front-facing brick chimney. Windows are original paired and single 6/1 wood double-hung sash.
198. 809 Kentucky (C). 1-story, 3-bay, frame side gable house built ca. 1945. The foundation is beveled concrete

United States Department of the Interior
National Park ServiceNational Register of Historic Places
Continuation SheetSection number 7 Page 30
Tennessee

Fairmount Neighborhood Historic District, Sullivan County,

block. Exterior walls are replacement aluminum siding. Side gable roof with box cornice, replacement asphalt shingles, and one exterior brick chimney. Windows are replacement 8/8 vinyl double-hung sash.

199. 812 Kentucky (C). 1-story, 3-bay, frame Minimal Traditional house built ca. 1935. The foundation is beveled concrete block. Exterior walls are replacement aluminum siding. Clipped gable roof with box cornice, replacement asphalt shingles, and one exterior brick chimney. Windows are original 6/6 wood double-hung sash.

200. 816 Kentucky (C). 1-1/2 story, 3-bay, frame bungalow house built ca. 1925. The foundation is beveled concrete block. Exterior walls are replacement aluminum siding. Cross gable roof with box cornice and gable brackets, replacement asphalt shingles, and one exterior brick chimney. Windows are original paired and single 1/1 wood double-hung sash.

Garage. 1-story, 1-bay garage with wooden doors, gable roof, and asbestos shingle cladding (C).

201. 824 Kentucky (C). 1-1/2 story, 4-bay, frame bungalow house built ca. 1925. The foundation is beveled concrete block. Exterior walls are original wood siding. Side gable roof with box cornice and gable brackets, replacement asphalt shingles, and one exterior brick chimney. Windows are original and are a combination of fixed 2-light, 8/1, and 6/6 wood double-hung sash. This house appears to have been converted to a multifamily rental property but retains a high degree of integrity of materials and design. The front dormer is clad in original wooden "shake" style shingles as is the porch entablature. It is possible that one original chimney has been removed.

202. 825 Kentucky (C). 2-story, 3-bay, brick/masonry apartment/multifamily building built ca. 1905. Formerly housed Fairmount Public School. The foundation is continuous brick. Exterior walls are original brick. Complex hip and gable roof with box cornice, replacement asphalt shingles, and no chimney. Windows are original with a fixed single-light flanked by 1/1 double-hung on the wings, with the central bay featuring three arch-topped 2/2 wood double-hung sash.

203. 900 Kentucky (C). 2-story, 3-bay, frame gabled-ell house with Queen Anne influence built ca. 1890. The foundation is continuous brick. Exterior walls are replacement aluminum siding. Complex hip and gable roof with box cornice, original pressed/patterned metal, and one exterior parged brick chimney. Windows are original 1/1 and replacement horizontal 2/2 wood double-hung sash.

Garage. 1-story, 2-bay, hip roof, wood siding (C).

204. 901 Kentucky (C). 2-story, 2-bay, frame Queen Anne house built ca. 1890. The foundation is continuous brick. Exterior walls are original weatherboard. Cross gable roof with box cornice, original pressed/patterned metal, and one interior brick chimney. Windows are original single and paired 1/1 wood double-hung sash.

205. 904 Kentucky (C). 1-story, 3-bay, frame Queen Anne Cottage house with Craftsman influence built ca. 1910.

United States Department of the Interior
National Park ServiceNational Register of Historic Places
Continuation SheetSection number 7 Page 31
Tennessee

Fairmount Neighborhood Historic District, Sullivan County,

Exterior walls are replacement vinyl siding. Complex hip and gable roof with box cornice, replacement asphalt shingles, and two interior brick chimneys. Windows are replacement 1/1 wood double-hung sash.

206. 905 Kentucky (C). 1-story, 3-bay, frame bungalow house built ca. 1925. The foundation is beveled concrete block. Exterior walls are replacement vinyl siding. Front gable roof with box cornice, replacement asphalt shingles, and no chimney. Windows are replacement 1/1 vinyl double-hung sash. Retains the original massing and side dormer characteristic of a vernacular Southern bungalow.
207. 906 Kentucky (C). 1-story, 3-bay, frame bungalow house built in the period 1900-1924. The foundation is continuous brick. Exterior walls are replacement vinyl siding. Side gable roof with box cornice and gable brackets, replacement asphalt shingles, and one exterior brick chimney. Windows are replacement single and paired 1/1 vinyl double-hung sash.
208. 909 Kentucky (NC). 2-story, converted 3-bay, frame irregular-plan house built ca. 1925. Exterior walls are replacement vinyl siding. Side gable roof with flush eaves, replacement asphalt shingles, and one interior brick chimney. Windows are replacement and are a combination of fixed single-light and 6/6 vinyl double-hung sash. This house has replacement porch elements, windows, roof and siding - including a stone veneer on the first floor. The fenestration pattern on the projecting front bay appears to have been changed. The unsympathetic alterations to materials and design of this house make it a non-contributing structure.
209. 912 Kentucky (NC). 1-story, 3-bay, frame bungalow house built ca. 1925. Exterior walls are replacement vinyl siding. Pyramidal roof with box cornice, replacement asphalt shingles, and two interior brick chimneys. Windows are replacement with one diamond-shaped gable oriole and 6/6 vinyl double-hung sash. The vertical vinyl siding, replacement windows, replacement roof, covered foundation, and modern replacement porch materials diminish the historic integrity of this house. It no longer retains sufficient integrity of design, materials, or workmanship to make it a contributing resource.
210. 915 Kentucky (C). 1-story, symmetrical 6-bay, frame Minimal Traditional duplex built ca. 1940. Exterior walls are replacement asbestos. Complex hip and gable roof with box cornice, replacement asphalt shingles, and no chimney. Windows are original 6/6 wood double-hung sash.
211. 916 Kentucky (C). 1-story, 3-bay, frame Queen Anne Cottage built ca. 1910. The foundation is wet-laid stone. Exterior walls are replacement vinyl siding. Complex hip and gable roof with box cornice, replacement asphalt shingles, and no chimney. Windows are replacement 1/1 vinyl double-hung sash.
212. 917 Kentucky (C). 1-story, 3-bay, frame bungalow house built ca. 1925. Exterior walls are replacement aluminum siding. Gable on hip roof with box cornice, replacement asphalt shingles, and no chimney. Windows are replacement 1/1 vinyl double-hung sash.
213. 918 Kentucky (NC--less than fifty years old). 1-story, symmetrical 4-bay, frame bungalow house built ca.

United States Department of the Interior
National Park ServiceNational Register of Historic Places
Continuation SheetSection number 7 Page 32
Tennessee

Fairmount Neighborhood Historic District, Sullivan County,

1990. The foundation is poured concrete. Exterior walls are vinyl siding. Front gable roof with box cornice, asphalt shingles, and no chimney. Windows are 1/1 wood double-hung sash.

214. 921 Kentucky (C). 1-story, 3-bay, frame bungalow house built ca. 1925. Exterior walls are original weatherboard. Side gable roof with open raked cornice with exposed rafter ends and gable brackets, replacement asphalt shingles, and one interior brick chimney. Windows are original triple and paired 3/1 wood double-hung sash. Characterized by overhanging roof, gable-roof dormer with exposed rafter tails and decorative brackets.
215. 926 Kentucky (C). 1-story, 3-bay, frame bungalow house built ca. 1925. The foundation is beveled concrete block. Exterior walls are replacement vinyl siding. Clipped gable roof with a box cornice, replacement asphalt shingles, and one exterior brick chimney. Windows are original 3/1 wood double-hung sash.
216. 927 Kentucky (C). 1-story, 2-bay, frame Minimal Traditional house built ca. 1950. Exterior walls are replacement vinyl siding. Side gable roof with box cornice, replacement asphalt shingles, and one exterior brick chimney. Windows are replacement a fixed single-light flanked by single-light vinyl casements.
217. 930 Kentucky (C). 1-story, 3-bay, frame bungalow house built ca. 1925. The foundation is continuous brick. Exterior walls are replacement vinyl siding. Hip roof with box cornice, replacement asphalt shingles, and two interior brick chimneys. Windows are replacement 1/1 vinyl double-hung sash. Front porch has been enclosed but retains its original massing that is representative of the neighborhood and, in particular, a corner lot.
218. 931 Kentucky (C). 1-story, 4-bay, frame bungalow house built ca. 1925. The foundation is continuous brick. Exterior walls are replacement brick veneer. Front gable roof with box cornice and enclosed gable brackets, replacement asphalt shingles, and one exterior brick chimney. Windows are replacement fixed single-lights flanked by single-light vinyl casements.
219. 1001 Kentucky (C). 2-story, 3-bay, frame irregular-plan house with Queen Anne Cottage influence built ca. 1900. The foundation is concrete block. Exterior walls are replacement vinyl siding. Multi-plane/complex roof with box cornice, replacement asphalt shingles, and two interior brick chimneys. Windows are replacement 1/1 vinyl double-hung sash.

Lynwood Street

220. 207 Lynwood (C). 2-story, 5-bay, frame Colonial Revival house built ca. 1930. The foundation is continuous brick. Exterior walls are replacement vinyl siding. Side gable roof with box cornice, replacement asphalt shingles, and one exterior brick chimney. Windows are original 8/1 wood double-hung sash. One-story sunroom addition.
221. 216 Lynwood (C). 2-story, 4-bay, frame Queen Anne house built ca. 1895. Exterior walls are covered with

United States Department of the Interior
National Park ServiceNational Register of Historic Places
Continuation SheetSection number 7 Page 33
Tennessee

Fairmount Neighborhood Historic District, Sullivan County,

vinyl siding. Complex hip and gable roof with box cornice, replacement asphalt shingles, and no chimney. Windows are original 1/1 with some original 2/2 wood double-hung sash.

Garage. 1-story, 2-bay with wood doors, wood siding, hip roof (C).

222. 219 Lynwood (C). 1-1/2 story, 3-bay, frame bungalow house with Craftsman influence built ca. 1925. Exterior walls are original brick veneer. Side gable roof with box cornice and gable brackets, replacement asphalt shingles, and one exterior brick chimney. Windows are original 1/1 wood double-hung sash.

223. 229 Lynwood. Vacant lot.

224. 299 Lynwood (C). 1-story, 3-bay, frame Queen Anne Cottage house built ca. 1900. The foundation is rusticated concrete block. Exterior walls are original brick veneer. Hip roof flanked by offsetting gables with box cornice, replacement asphalt shingles, and one interior brick chimney. Windows are original 1/1 wood double-hung sash. Wrap-around porch.

225. 300 Lynwood. Vacant lot.

226. 301 Lynwood (C). 1-1/2 story, 3-bay, frame Queen Anne cottage built ca. 1910. The foundation is continuous brick. Exterior walls are original weatherboard. Hip roof with box cornice, original pressed/ patterned metal, and one interior brick chimney. Windows are original 1/1 wood double-hung sash.

227. 305 Lynwood (C). 1-story, 3-bay, frame Queen Anne cottage built ca. 1910. The foundation is continuous brick. Exterior walls are original weatherboard. Hip roof with box cornice, replacement asphalt shingles, and one interior brick chimney. Windows are original 1/1 wood double-hung sash.

228. 309 Lynwood (C). 1-story, 3-bay, frame Queen Anne cottage built ca. 1910. The foundation is continuous brick. Exterior walls are replacement vinyl siding. Hip roof with box cornice, replacement asphalt shingles, and one interior brick chimney. Windows are replacement 6/6 vinyl double-hung sash.

229. 310 Lynwood (NC--less than fifty years old). 1-story, 3-bay, frame Ranch house built ca. 1970. Exterior walls are aluminum siding. Side gable roof with box cornice, asphalt shingles, and one interior brick chimney. Windows are 1/1 double-hung and 8-light wood casements.

230. 312 Lynwood (C). 1-story, 3-bay, frame bungalow house built ca. 1925. Exterior walls are original wood shingles. Side gable roof with open cornice and brackets, replacement asphalt shingles, and one exterior brick chimney. Windows are replacement 6/1 wood double-hung sash. Large gable-roof dormer. Bracketed eaves. Shed roof porch with paired columns on brick piers.

Garage. 1-story, 1-bay, wood shake shingle siding, gable roof (C).

United States Department of the Interior
National Park ServiceNational Register of Historic Places
Continuation SheetSection number 7 Page 34
Tennessee

Fairmount Neighborhood Historic District, Sullivan County,

231. 313 Lynwood (C). 2-story, 3-bay, frame center-gable house with English Cottage Revival influence built ca. 1940. Exterior walls are original brick veneer. Side gable roof with steeply-pitched gables, flush eaves, replacement asphalt shingles, and no chimney. Windows are original 6/1 and 4/1 wood double-hung sash.
232. 321 Lynwood (C). 1-story, 3-bay, frame gabled-ell house built ca. 1910. Exterior walls are replacement vinyl siding. Cross gable roof with box cornice, replacement asphalt shingles, and two vinyl-covered exterior chimneys. Windows are original 6/6 wood double-hung sash.

Maple Street

233. 209 Maple (C). 1-story, 2-bay, frame bungalow house built ca. 1925. The foundation is beveled concrete block. Exterior walls are replacement vinyl siding. Side gable roof with box cornice and gable brackets, replacement asphalt shingles, and one exterior brick chimney. Windows are replacement 1/1 vinyl double-hung sash.
234. 401 Maple (C). 1-story, 4-bay, frame Ranch house built ca. 1955. The foundation is concrete block. Exterior walls are original brick veneer. Side gable roof with box cornice, replacement asphalt shingles, and one interior brick chimney. Windows are replacement 6/6 and 4/4 vinyl double-hung sash.
235. 407 Maple (NC--less than fifty years old). 1-story, 6-bay, frame Ranch house built ca. 1970. The foundation is poured concrete. Exterior walls are replacement vinyl siding. Cross gable roof with box cornice, replacement asphalt shingles, and one exterior brick chimney. Windows are horizontal 2/2 metal double-hung sash.
236. 437 Maple (C). 1-story, 5-bay, frame Minimal Traditional house with English Cottage Revival influence built ca. 1940. The foundation is poured concrete. Exterior walls are replacement aluminum siding. Multi-plane/complex roof with flush eaves, replacement asphalt shingles, and one interior brick chimney. Windows are original 1/1 and 6/1 wood double-hung sash.

Maryland Avenue

237. 316 Maryland (C). 1-story, 3-bay, frame bungalow house built ca. 1925. The foundation is continuous brick. Exterior walls are replacement stucco. Side gable roof with open cornice and brackets, replacement asphalt shingles, and one exterior brick chimney. Windows are original paired and triple 9/1 wood double-hung sash. Characterized by shed-roof dormer with decorative half-timbers in the gable ends and eave brackets. While the roof is clad in replacement shingles it retains a tiled ridgeline. There is a shed roof porch with heavy squared columns.
238. 320 Maryland (C). 1-story, 3-bay, frame Queen Anne Cottage house built ca. 1910. The foundation is continuous brick. Exterior walls are original weatherboard. Complex hip and gable roof with box cornice and shed gable eaves, replacement asphalt shingles, and one interior brick chimney. Windows are original 1/1 wood double-hung sash. Characterized by the octagonal bay, the complex roof pattern, tall chimney, and original wood cladding. There is a porch with battered columns on brick piers. There is an enclosed sleeping porch on the rear.

United States Department of the Interior
National Park ServiceNational Register of Historic Places
Continuation SheetSection number 7 Page 35
Tennessee

Fairmount Neighborhood Historic District, Sullivan County,

239. 324 Maryland (C). 1-story, 3-bay, frame Queen Anne Cottage house built ca. 1910. The foundation is continuous brick. Exterior walls are original weatherboard. Complex hip and gable roof with box cornice and shed gable eaves, replacement asphalt shingles, and no chimney. Windows are original and replacement 1/1 and 16-light wood casements. Octagonal bay below the projecting front gable, which has 28-pane divided light windows. The wall cladding is original except for the side elevations, which have aluminum, and the rear addition.
240. 400 Maryland (C). 1-story, 3-bay, frame Queen Anne Cottage house built ca. 1910. The foundation is continuous brick. Exterior walls are replacement vinyl siding. Complex hip and gable roof with a box cornice and eave returns, replacement asphalt shingles, and one parged interior brick chimney. Windows are original and replacement 1/1 wood double-hung sash. There is a single-story addition to the rear.
241. 401 Maryland (C). 2-1/2 story, 4-bay, brick/masonry Queen Anne house built ca. 1890. The foundation is wet-laid stone. Exterior walls are original brick veneer. Complex hip and gable roof with box cornice, replacement asphalt shingles, and one interior and one exterior brick chimney. Windows are original with 1/1 double-hung sashes and the house also features arched gable orioles, with prominent half-round arch-topped wood single-hung windows.
242. 404 Maryland (C). 1-story, 3-bay, frame bungalow house built ca. 1925. The foundation is continuous brick. Exterior walls are original brick veneer. Side gable roof with a box cornice and brackets, replacement asphalt shingles, and one interior brick end chimney. Windows are original 3/1 wood double-hung sash.
243. 408 Maryland (C). 2-story, 4-bay, frame bungalow house built ca. 1925. The foundation is continuous brick. Exterior walls are original brick veneer. Side gable roof with box cornice and brackets, replacement asphalt shingles, and one interior brick chimney. Windows are original 4/4 and 6/6 wood double-hung sash. Has an addition that served as a car port or garage but now is enclosed and converted to living space.
244. 413 Maryland (C). 2-1/2 story, 5-bay, frame Shingle style house built in the period 1900-1924. The foundation is wet-laid stone. Exterior walls are original wood shingles. Multi-plane/complex roof with open cornice, replacement asphalt shingles, and two stone chimneys. Windows are original 6/1 and 9/1 wood double-hung sash.
245. 418 Maryland (C). 2-story, 2-bay, frame Queen Anne house built ca 1900. The foundation is rusticated stone. Exterior walls are original brick veneer. Front gable roof with box cornice and eave returns, replacement asphalt shingles, and two interior brick chimneys. Windows are original 1/1 wood double-hung sash with segmental brick radial arches. Side entrance under the wrap-around porch. Transom window lights have been replaced by solid material. There is a full walkout subfloor.
246. 424 Maryland (C). 2-story, 3-bay, frame Four-Square house built ca. 1915. The foundation is continuous brick.

United States Department of the Interior
National Park ServiceNational Register of Historic Places
Continuation SheetSection number 7 Page 36
Tennessee

Fairmount Neighborhood Historic District, Sullivan County,

Exterior walls are original brick veneer. Pyramidal roof with box cornice, replacement asphalt shingles, and one interior brick chimney. Windows are original 4/1 wood double-hung sash.

247. 433 Maryland (C). 2-story, 3-bay, frame Colonial Revival house built ca. 1940. Exterior walls are original brick veneer. Side gable roof with box cornice and eave returns, replacement artificial slate, and two exterior brick chimneys. Windows are replacement 6/6 wood double-hung sash. Front door has sidelights and fanlight; pediment over door supported by decorative ironwork columns. Three gable-roof dormers with returning eaves and round arch-topped windows. Side porch.
248. 500 Maryland (C). 2-story, 3-bay, frame gable-front house with Craftsman influence built ca. 1915. The foundation is continuous brick. Exterior walls are original brick veneer. Front gable roof with open cornice with exposed rafter ends, replacement asphalt shingles, and one interior brick chimney. Windows are original 1/1 wood double-hung sash.
249. 501 Maryland (C). 2-story, 3-bay, frame Queen Anne house built ca. 1890. Exterior walls are replacement vinyl siding. Complex hip and gable roof with box cornice, replacement asphalt shingles, and no chimney. Windows are replacement 1/1 wood double-hung sash.
250. 502 Maryland (C). 1-story, 3-bay, frame bungalow house built ca. 1925. The foundation is continuous brick. Exterior walls are original brick veneer. Front gable roof with box cornice and brackets, replacement asphalt shingles, and one exterior brick chimney. Windows are original 3/1 vinyl double-hung sash.
251. 505 Maryland (C). 2-story, 2-bay, frame Dutch Colonial Revival house built ca. 1920. Exterior walls are replacement aluminum siding. Gambrel roof with box cornice and eave returns, original asphalt shingles, and one interior brick chimney. Windows are original 1/1 vinyl double-hung sash.
252. 507 Maryland (C). 1-story, 3-bay, frame cape cottage house built ca. 1940. Exterior walls are original brick veneer. Side gable roof with box cornice, replacement asphalt shingles, and one exterior brick chimney. Windows are original 6/6 wood double-hung sash.
253. 519 Maryland (C). 2-story, 4-bay, frame Dutch Colonial Revival house built ca. 1930. The foundation is concrete block. Exterior walls are original brick veneer. Gambrel roof with box cornice, replacement asphalt shingles, and one interior and one exterior brick chimney. Windows are original single and paired 3/1 wood double-hung sash.
254. 523 Maryland (C). 1-1/2 story, 3-bay, frame airplane bungalow house built ca. 1925. The foundation is concrete block. Exterior walls are original brick veneer. Side gable roof with box cornice, replacement asphalt shingles, and one exterior brick chimney. Windows are original 6/1 wood double-hung sash.
255. 601 Maryland (C). 1-story, 3-bay, frame bungalow house with Craftsman influence built ca. 1925. The

United States Department of the Interior
National Park ServiceNational Register of Historic Places
Continuation SheetSection number 7 Page 37
Tennessee

Fairmount Neighborhood Historic District, Sullivan County,

foundation is beveled concrete block. Exterior walls are original weatherboard. Side gable roof with open cornice, replacement asphalt shingles, and one interior brick chimney. Windows are original 4/1 wood double-hung sash.

256. 602 Maryland (C). 1-story, symmetrical 3-bay, frame Minimal Traditional house with mixed bungalow and Colonial Revival influence built ca. 1945. The foundation is continuous brick. Exterior walls are original brick veneer. Multi-plane/complex roof with box cornice, replacement asphalt shingles, and one exterior brick chimney. Windows are original 1/1 double-hung and 10-light wood fixed.
257. 603 Maryland (C). 1-story, 3-bay, frame bungalow house built ca. 1925. Exterior walls are replacement vinyl siding. Side gable roof with box cornice and enclosed brackets, replacement asphalt shingles, and one interior brick chimney. Windows are original 4/1 wood double-hung sash.
258. 605 Maryland (C). 2-story, 3-bay, frame bungalow house built ca. 1925. Exterior walls are replacement vinyl siding. Side gable roof with box cornice, replacement asphalt shingles, and no chimney. Windows are original 3/1 and 4/1 wood double-hung sash. Gable roof porch with battered columns on brick piers. Shed roof dormer.
259. 606 Maryland (C). 1-story, 4-bay, frame Minimal Traditional house built ca. 1950. Exterior walls are original brick veneer. Side gable roof with flush eaves, replacement asphalt shingles, and one exterior brick chimney. Windows are original 6/6 wood double-hung sash.
260. 701 Maryland (C). 2-story, 3-bay, frame Queen Anne house with Colonial Revival influence built ca. 1890. The foundation is continuous brick. Exterior walls are replacement vinyl siding. Complex hip and gable roof with box cornice and gable returns, replacement asphalt shingles, and no chimney. Windows are replacement and original 1/1 wood double-hung sash.
261. 705 Maryland (NC). 2-story, 4-bay, frame irregular-plan house built ca. 1900. The foundation is continuous brick. Exterior walls are replacement aluminum siding. Cross gable roof with flush eaves, replacement asphalt shingles, and no chimney. Windows are replacement 1/1 double-hung and modern single-light wood casements. This house has undergone significant alterations to its historic form and materials. It no longer retains enough integrity to convey its significance.
262. 709 Maryland (C). 1-story, 3-bay, frame Queen Anne cottage house built ca. 1910. The foundation is continuous brick. Exterior walls are replacement asbestos. Hip roof with box cornice, replacement asphalt shingles, and two interior brick chimneys. Windows are original 1/1 wood double-hung sash.
263. 712 Maryland (C). 1-story, 3-bay, frame Queen Anne cottage house built ca. 1910. The foundation is continuous brick. Exterior walls are replacement brick. Gable on hip roof with box cornice, replacement asphalt shingles, and two interior brick chimneys. Windows are replacement 1/1 vinyl double-hung sash.

United States Department of the Interior
National Park ServiceNational Register of Historic Places
Continuation SheetSection number 7 Page 38
Tennessee

Fairmount Neighborhood Historic District, Sullivan County,

264. 716 Maryland (C). 1-story, 3-bay, frame Queen Anne cottage house built ca. 1910. The foundation is beveled concrete block. Exterior walls are replacement vinyl siding. Gable on hip roof with box cornice, replacement asphalt shingles, and two interior brick chimneys. Windows are replacement 6/6 vinyl double-hung sash.
265. 719 Maryland (C). 1-story, 3-bay, frame Free Classic house built ca. 1910. Exterior walls are covered with replacement vinyl siding. Side gable roof with box cornice and brackets, original asphalt shingles, and one interior brick chimney. Windows are replacement 1/1 vinyl double-hung sash.
266. 720 Maryland (C). 1-story, 3-bay, frame Queen Anne cottage house built ca. 1910. The foundation is continuous brick. Exterior walls are replacement vinyl siding. Gable on hip roof with box cornice, replacement asphalt shingles, and one parged interior chimney. Windows are replacement 1/1 vinyl double-hung sash.
267. 721 Maryland (C). 2-story, 5-bay, frame Four-Square house with Colonial Revival influence built ca. 1920. Exterior walls are replacement vinyl siding. Multi-plane/complex roof with box cornice, replacement asphalt shingles, and one exterior and one corbelled exterior brick chimney. Windows are replacement 6/6 and 1/1 vinyl double-hung sash.
268. 725 Maryland (C). 2-story, 3-bay, frame Queen Anne house with Colonial Revival influence built ca. 1900. Exterior walls are replacement cementitious/Hardie plank. Complex hip and gable roof with box cornice and shed gable eaves, replacement asphalt shingles, and one interior brick chimney. Windows are replacement 1/1 wood double-hung sash.
269. 728 Maryland (C). 2-story, 4-bay, frame Colonial Revival house built ca. 1930. Exterior walls are replacement aluminum siding. Side gable roof with box cornice and modillions, replacement asphalt shingles, and one exterior brick chimney. Windows are original hooded 6/6 wood double-hung sash.
270. 821 Maryland (C). 1-story, 3-bay, frame bungalow house built ca. 1925. The foundation is continuous brick. Exterior walls are replacement wood siding. Clipped gable roof with box cornice, replacement asphalt shingles, and one exterior brick chimney. Windows are replacement 6/1 vinyl double-hung sash.
271. 825 Maryland (C). 1-1/2 story, 3-bay, frame bungalow house with Craftsman influence built ca. 1925. Exterior walls are original brick veneer. Side gable roof with box cornice and brackets, replacement asphalt shingles, and one interior brick chimney. Windows are replacement 1/1 and original 3/1 wood double-hung sash.
- Garage. 1-story, 2-bay, side gable roof with open raked eaves (C).
272. 901 Maryland (NC--less than fifty years old). 1-story, 2-bay, frame Ranch house built ca. 1970. The foundation is beveled concrete block. Exterior walls are replacement vinyl siding. Front gable roof with box cornice, replacement asphalt shingles, and no chimney. Windows are 1/1 wood double-hung sash.

United States Department of the Interior
National Park ServiceNational Register of Historic Places
Continuation SheetSection number 7 Page 39
Tennessee

Fairmount Neighborhood Historic District, Sullivan County,

273. 905 Maryland (C). 2-story, 3-bay, frame Queen Anne house with Colonial Revival influence built ca. 1890. Exterior walls are replacement vinyl siding. Complex hip and gable roof with box cornice, replacement asphalt shingles, and one interior brick chimney. Windows are original 1/1 wood double-hung sash.
274. 909 Maryland (C). 1-1/2 story, 3-bay, frame bungalow house with Craftsman influence built ca. 1925. The foundation is concrete block. Exterior walls are original weatherboard. Front gable roof with open cornice with gable brackets and exposed rafter ends, replacement asphalt shingles, and one interior and one exterior brick chimney. Windows are original 3/1 wood double-hung sash.
275. 911 Maryland (C). 1-story, 3-bay, frame bungalow house with Craftsman influence built ca. 1925. The foundation is beveled concrete block. Exterior walls are original brick veneer. Side gable roof with box cornice, replacement asphalt shingles, and one exterior brick chimney. Windows are original 3/1 and 4/1 wood double-hung sash.
276. 913 Maryland (C). 1-story, 3-bay, frame bungalow house built ca. 1925. The foundation is poured concrete. Exterior walls are original brick veneer. Side gable roof with box cornice, replacement asphalt shingles, and one exterior brick chimney. Windows are replacement 6/1 wood double-hung sash.
277. 915 Maryland (C). 1-1/2 story, 2-bay, frame Minimal Traditional house with Queen Anne influence built ca. 1920. The foundation is continuous brick. Exterior walls are replacement aluminum siding. Complex hip and gable roof with box cornice, replacement asphalt shingles, and one interior parged brick chimney. Windows are original and replacement 1/1 wood double-hung sash.
278. 917 Maryland (C). 1-story, 3-bay, frame Minimal Traditional house with Queen Anne Cottage influence built ca. 1920. Exterior walls are replacement vinyl siding. Complex hip and gable roof with box cornice and shed gable eaves, original pressed/patterned metal, and one interior brick chimney. Windows are replacement 1/1 wood double-hung sash.
279. 924 Maryland (C). 2-1/2 story, 10-bay, frame Colonial Revival educational building with Federal and Greek Revival influence built ca. 1910. Exterior walls are original brick veneer. Side gable roof with box cornice, replacement asphalt shingles, and no chimney. Windows are original 8/8 metal double-hung sash. Keystone arches and elaborate door centered on the front elevation are characteristic of the Federal Revival period of architecture in the early 20th century.

Pennsylvania Avenue

280. 205 Pennsylvania (C). 1-story, 3-bay, frame bungalow house built ca. 1925. The foundation is beveled concrete block. Exterior walls are original wood shingles. Pyramidal roof with box cornice, replacement asphalt shingles, and no chimney. Windows are original 6/1 wood double-hung sash.
281. 207 Pennsylvania (C). 1-story, 3-bay, frame gable-front house with Craftsman influence built ca. 1930. The

United States Department of the Interior
National Park ServiceNational Register of Historic Places
Continuation SheetSection number 7 Page 40
Tennessee

Fairmount Neighborhood Historic District, Sullivan County,

foundation is beveled concrete block. Exterior walls are original weatherboard. Front gable roof with box cornice and gable peak brackets, replacement asphalt shingles, and one interior brick chimney. Windows are replacement 1/1 vinyl double-hung sash. Shed roof porch with squared wood columns on brick piers, brackets under the eaves, and shingles at the gable ends.

282. 311 Pennsylvania (NC). 1-story, 3-bay, frame gable front house built ca. 1950. Exterior walls are replacement aluminum siding. Front gable roof with flush eaves, replacement asphalt shingles, and no chimney. Windows are original 1/1 vinyl double-hung sash. This house is non-contributing due to major modifications of materials and design.
283. 312 Pennsylvania (C). 1-1/2 story, 3-bay, frame bungalow house with Queen Anne Cottage influence built ca. 1920. Exterior walls are replacement vinyl siding. Front gable roof with box cornice, replacement asphalt shingles, and two interior coursed stone chimneys. Windows are original 1/1 wood double-hung sash. Wrap-around porch with round wood columns and shed roof.
284. 313 Pennsylvania (C). Park-like, forested lot characterized by its natural setting of trees and ivy. It was originally part of a landscape design for the Lynwood plantation built by James King III. It contributes on the basis of its association, setting, design, and feeling.
285. 315 Pennsylvania (C). 1-1/2 story, 2-bay, frame gable-front house built ca. 1910. Originally an accessory structure to the hotel operation (carriage house), with service area on the ground floor, two oversize bay doors, and a loft/living space above. Exterior walls are replacement aluminum siding. Front gable roof with box cornice, replacement asphalt shingles, and one exterior brick chimney. Windows are replacement 1/1 vinyl double-hung sash. The ground floor doors have been altered to a picture window with flanking 1/1 sashes and one wooden entry door with sidelights.
286. 316 Pennsylvania (C). 1-story, 3-bay, frame ranch house built ca. 1950. The foundation is continuous brick. Exterior walls are original brick veneer. Side gable roof with box cornice, replacement asphalt shingles, and one interior and one exterior end chimney. Windows are replacement 6/6 vinyl double-hung sash.
287. 317 Pennsylvania (NC--less than fifty years old). 1-story, 3-bay, frame irregular-plan house with Colonial Revival influence built ca. 2000. Exterior walls are vinyl siding. Side gable roof with box cornice, original seamed metal, and no chimney. Windows are 6/6 vinyl double-hung sash.
288. 324 Pennsylvania. Vacant lot.
289. 328 Pennsylvania (C). 1-story, 3-bay, frame gabled-ell house built ca. 1910. Exterior walls are replacement vinyl siding. Cross gable roof with box cornice, replacement asphalt shingles, and one central interior brick chimney. Windows are original 2/2 wood double-hung sash.
290. 330 Pennsylvania (C). 1-1/2 story, 3-bay, brick/masonry center-gable house with Gothic/Neo-Gothic influence

United States Department of the Interior
National Park ServiceNational Register of Historic Places
Continuation SheetSection number 7 Page 41
Tennessee

Fairmount Neighborhood Historic District, Sullivan County,

built ca. 1905. The foundation is wet-laid stone. Exterior walls are replacement stucco. Side gable roof with box cornice and shed gable eaves, front-gable bargeboards, replacement asphalt shingles, and no chimney. Windows are original and replacement 1/1 wood double-hung sash. Roofline distinguished by gable and two dormers. Fishbone pattern siding and dentils in gables. Stone sills. Center porch with pediment. Central door has side lights and transom.

291. 336 Pennsylvania. Vacant lot.

292. 400 Pennsylvania. Vacant lot.

293. 401 Pennsylvania (C). 2-story, 3-bay, frame Queen Anne house built ca. 1890. Exterior walls are replacement vinyl siding. Complex hip and gable roof with box cornice, replacement seamed metal, and one modern interior brick chimney. Windows are replacement 9/6, 12/8, and 6/1 vinyl double-hung sash. Octagonal bay with a cupola above the second floor and a roof that is a combination of pressed metal and modern metal replacement. There is a corner pediment with inset decorative garland and a wrap-around porch.

Garage. 1-story, 2-bay, wooden doors, cross gable roof, vinyl siding (C).

294. 402 Pennsylvania (C). 2-story, 4-bay, frame Queen Anne house with Colonial Revival influence built ca. 1890. Exterior walls are original weatherboard. Gable on hip roof with flush cornice, replacement asphalt shingles, and no chimney. Windows are original 1/1 wood double-hung sash. Gable has false timbering in a tree motif and is clad in saw-tooth shingles. The front door has a transom and the porch retains its metal roof.

295. 408 Pennsylvania (C). 2-story, 3-bay, frame Queen Anne house built ca. 1890. Exterior walls are replacement rolled asphalt. Gable on hip roof with box cornice, replacement asphalt shingles, and two interior brick chimneys. Windows are original 1/1 and paired 16-light wood double-hung sash. Porch with battered columns, bow window, and rolled asphalt cladding.

296. 409 Pennsylvania (NC). 2-story, 2-bay, frame Queen Anne house built ca. 1890. Exterior walls are replacement vinyl siding. Complex hip and gable roof with box cornice, replacement asphalt shingles, and no chimney. Windows are replacement 4/4 vinyl double-hung sash. Due to additions, changes in fenestration and roof plan, and many replacement materials, it has lost the ability to convey its significance and as such is non-contributing.

297. 410 Pennsylvania (C). 2-story, 3-bay, frame Queen Anne house with Colonial Revival influence built ca. 1890. Exterior walls are replacement aluminum siding. Complex hip and gable roof with flush eaves, replacement asphalt shingles, and no chimney. Windows are original 1/1 wood double-hung sash.

298. 416 Pennsylvania (C). 2-story, 3-bay, frame Queen Anne house with Folk/Traditional influence built ca. 1890.

United States Department of the Interior
National Park ServiceNational Register of Historic Places
Continuation SheetSection number 7 Page 42
Tennessee

Fairmount Neighborhood Historic District, Sullivan County,

Exterior walls are replacement vinyl siding. Complex hip and gable roof with box cornice, replacement asphalt shingles, and two interior brick chimneys. Windows are replacement 6/6 vinyl double-hung sash. The house retains the finial at the peak of the octagonal tower.

299. 417 Pennsylvania (C). 1-story, 3-bay, frame bungalow house built ca. 1920. The foundation is continuous brick. Exterior walls are replacement aluminum siding. Side gable roof with box cornice and brackets, replacement asphalt shingles, and two interior parged brick chimneys. Windows are original 1/1 wood double-hung sash.

300. 420 Pennsylvania. Vacant lot.

301. 423 Pennsylvania (C). 1-1/2 story, symmetrical 3-bay, frame center-gable house with Dutch Colonial Revival influence built ca. 1915. The foundation is concrete block. Exterior walls are original brick veneer. Gambrel roof with box cornice, replacement asphalt shingles, and two interior brick chimneys. Windows are original 1/1 wood double-hung sash. Gambrel roof over the main massing, canted weatherboard cladding in the gables and dormers, and dentilled mouldings in the dormers.

302. 500 Pennsylvania (C). 2-story, 4-bay, brick/masonry Queen Anne house built ca. 1890. Exterior walls are original brick. Complex hip and gable roof with box cornice, replacement asphalt shingles, and one interior and one interior end chimney. Windows are original 1/1 wood double-hung sash. Clipped fish-scale shingles on the front gable. Elliptical and round stained glass windows are present in the second floor of the front and side bays. The windows have stone sills and lintels. There is a wrap-around porch with pediment, brick railing and round columns on piers. A belt clad in diagonal siding has been added between first and second floors. A one-story addition was added to the rear mid-twentieth century.

303. 501 Pennsylvania (C). 2-story, 3-bay, frame bungalow house built ca. 1920. Exterior walls are original weatherboard. Cross gable roof with box cornice, replacement asphalt shingles, and two interior brick chimneys. Windows are original 1/1 wood double-hung sash. Tail-feather shingles cover a large front projecting gable. Two diamond windows flank a center Palladian window with leaded glass. There is a broad, hip-roof porch characteristic of the house type.

304. 504 Pennsylvania. Vacant lot.

305. 509 Pennsylvania (C). 1-story, 4-bay, frame Queen Anne Cottage house built ca. 1910. The foundation is continuous brick. Exterior walls are replacement aluminum siding. Complex pyramidal and gable roof with box cornice, replacement asphalt shingles, and one interior brick chimney. Windows are original 1/1 wood double-hung sash. Pyramidal roof over the main massing and a wrap-around porch with turned balustrade.

306. 512 Pennsylvania (C). 2-story, 3-bay, frame Four-Square house with Queen Anne influence built ca. 1910. Exterior walls are original weatherboard. Pyramidal roof with box cornice, replacement asphalt shingles, and two central interior chimneys. Windows are original 6/6 and 9/9 wood double-hung sash. Central double

United States Department of the Interior
National Park ServiceNational Register of Historic Places
Continuation SheetSection number 7 Page 43
Tennessee

Fairmount Neighborhood Historic District, Sullivan County,

door with full-length paired windows on the first floor; the center window on the second floor has been replaced. Front porch with central pediment, turned railing and round columns. Projecting center bay. Dormer with three multi-pane sash.

307. 516 Pennsylvania (C). 1-1/2 story, 4-bay, frame Dutch Colonial Revival house with English Cottage Revival influence built ca. 1930. The foundation is continuous brick. Exterior walls are original stucco. Gambrel roof with flush eaves, original tile, and two exterior end and one interior chimneys. Windows are original paired and single 6/6 wood double-hung sash. Steeply pitched front gable with a peaked window over the offset, a front entrance with strong entablature, pilasters, and wood panel door. There are two, low-pitched, inset, shed roof dormers. Recessed porch with french doors.
308. 517 Pennsylvania (C). 2-story, symmetrical 3-bay, frame Four-Square house with Colonial Revival influence built ca. 1920. The foundation is continuous brick. Exterior walls are replacement vinyl siding. Hip roof with box cornice, original pressed/patterned metal, and one interior brick chimney. Windows are original 1/1 wood double-hung sash.
309. 518 Pennsylvania (NC--less than fifty years old). 1-story, 4-bay, frame Ranch house built ca. 1965. The foundation is poured concrete. Exterior walls are wood siding. Side gable roof with box cornice, replacement asphalt shingles, and no chimney. Windows are three light aluminum casements.
310. 523 Pennsylvania (C). 2-story, 2-bay, frame Queen Anne house with Colonial Revival influence built ca. 1890. The foundation is continuous brick. Exterior walls are replacement vinyl siding. Complex hip and gable roof with box cornice and shed gable eaves, replacement asphalt shingles, and one central interior brick chimney. Windows are original 1/1 wood double-hung sash.
311. 600 Pennsylvania (C). 1-1/2 story, symmetrical 3-bay, frame bungalow house built ca. 1925. The foundation is continuous brick. Exterior walls are original brick veneer. Side gable roof with box cornice, replacement asphalt shingles, and one exterior end chimney. Windows are original 5/1 wood double-hung sash. Dormer with gable roof and brackets and three, 5-over-1 double-hung sashes. Brackets at gable ends. Gable-roof front porch with brick railings and end columns; battered columns on brick piers.
312. 601 Pennsylvania (C). 2-story, 2-bay, frame Queen Anne house built ca. 1890. Exterior walls are covered with replacement aluminum siding. Complex hip and gable roof with box cornice, replacement asphalt shingles, and one interior brick chimney. Windows are replacement 1/1 vinyl double-hung sash.
313. 607 Pennsylvania (C). 1-1/2 story, 4-bay, frame center-gable house built ca. 1925. Exterior walls are replacement aluminum siding. Side gable roof with box cornice, replacement asphalt shingles, and one interior brick chimney. Windows are original 6/6 wood double-hung sash. Two-story porch appears to have undergone moderate alterations.
314. 609 Pennsylvania (C). 2-story, 3-bay, frame Queen Anne house with Colonial Revival influence built ca. 1900.

United States Department of the Interior
National Park ServiceNational Register of Historic Places
Continuation SheetSection number 7 Page 44
Tennessee

Fairmount Neighborhood Historic District, Sullivan County,

Exterior walls are replacement vinyl siding. Complex hip and gable roof with box cornice, replacement asphalt shingles, and one interior brick chimney. Windows are replacement 1/1 wood double-hung sash.

315. 611 Pennsylvania (C). 1-story, 3-bay, frame bungalow house built ca. 1925. The foundation is continuous brick. Exterior walls are replacement vinyl siding. Side gable roof with box cornice, replacement asphalt shingles, and one interior parged brick chimney. Windows are original 6/1 double-hung windows except for two single-light sliders in the eyebrow wood dormer.
316. 612 Pennsylvania (C). 1-1/2 story, symmetrical 3-bay, frame bungalow house built ca. 1925. Exterior walls are original brick veneer. Side gable roof with box cornice, replacement asphalt shingles, and one exterior end chimney. Windows are replacement 1/1 aluminum double-hung sash. Dormer with gable-roof. Gable-roof porch with brick railing and battered columns on brick piers.
317. 614 Pennsylvania (C). 1-story, symmetrical 3-bay, frame bungalow house built ca. 1925. Exterior walls are original brick veneer. Cross gable roof with box cornice, replacement asphalt shingles, and one central interior chimney. Windows are replacement fixed single-light flanked by 1/1 wood double-hung sash. Projecting gable-roof front porch with brick railings and squared wood posts on brick piers. The gables are clad in replacement vinyl.
318. 617 Pennsylvania (C). 1-story, 3-bay, frame bungalow house built ca. 1925. The foundation is concrete block. Exterior walls are original brick veneer. Clipped gable roof with open cornice, original pressed/patterned metal, and one exterior brick chimney. Windows are original 6/1 and 6/6 wood double-hung sash. Gable ends and shed roof dormer have been stuccoed.
319. 618 Pennsylvania (C). 1-story, 3-bay, frame Minimal Traditional house with English Cottage Revival influence built ca. 1950. Exterior walls are original aluminum siding. Side gable roof with box cornice, replacement asphalt shingles, and one front-facing exterior chimney. Windows are original paired and single 1/1 wood double-hung sash. The chimney shoulders are capped in worked stone.
320. 621 Pennsylvania (C). 1-story, symmetrical 3-bay, frame Dutch Colonial Revival house built ca. 1930. Exterior walls are replacement vinyl siding. Gambrel roof with open cornice, replacement asphalt shingles, and two exterior brick end chimneys. Windows are original 6/6 wood double-hung sash.
321. 650 Pennsylvania (C). 2-story, 4-bay, frame Queen Anne house built ca. 1885. The foundation is continuous brick. Exterior walls are original weatherboard. Complex hip and gable roof with box cornice, replacement asphalt shingles, and one interior chimney. Windows are original paired and triple 1/1 wood double-hung sash.
322. 700 Pennsylvania (C). 2-story, 3-bay, frame Queen Anne house with Colonial Revival influence built ca. 1890. The foundation is continuous brick with some parts in stone. Exterior walls are replacement weatherboard. Cross gable roof with box cornice and gable-end brackets, replacement asphalt shingles, and no chimney.

United States Department of the Interior
National Park ServiceNational Register of Historic Places
Continuation SheetSection number 7 Page 45
Tennessee

Fairmount Neighborhood Historic District, Sullivan County,

Windows are original 2/2 wood double-hung sash. Wrap-around porch with wood railing and columns on brick piers. The offset primary entrance has a glass front door and sidelights. There are projecting bays on each side elevation. The front gable has decorative diagonal siding and there are brackets at the gables and under the eaves.

323. 701 Pennsylvania (C). 1-story, 3-bay, frame bungalow house built ca. 1925. Exterior walls are covered with replacement vinyl siding. Side gable roof with box cornice, replacement asphalt shingles, and one interior end chimney. Windows are original 2nd-story 8/1 double-hung and 1st-floor 12/1 wood single-hung sash.
324. 704 Pennsylvania (C). 1-story, 3-bay, frame bungalow house built ca. 1925. Exterior walls are original brick veneer. Front gable roof with box cornice and gable-end brackets, replacement asphalt shingles, and one exterior end chimney. Windows are original single 1/1 with a fixed light flanked by 1/1 wood double-hung sash.
325. 705 Pennsylvania (C). 1-story, symmetrical 3-bay, frame bungalow house built ca. 1925. The foundation is continuous brick. Exterior walls are replacement aluminum siding. Clipped gable roof with box cornice, replacement asphalt shingles, and one interior end chimney. Windows are original 4/1 wood single-hung sash.
326. 708 Pennsylvania (C). 2-story, 5-bay, frame Queen Anne house with Folk Victorian influence built ca. 1880. The foundation is wet-laid stone. Exterior walls are original weatherboard. Complex hip and gable roof with box cornice and front gable eaves with modillions, replacement asphalt shingles, and no chimney. Windows are original paired 6-light sliding sash and single 1/1 wood double-hung sash. Screened-in shed-roof front porch with scroll-sawn brackets on turned wood columns. There are brackets/modillions under the returning eaves, with serrated shingles on the gables and porch.
327. 709 Pennsylvania (NC--less than fifty years old). 1-story, 4-bay, frame Minimal Traditional house built ca. 1970. Exterior walls are brick veneer. Side gable roof with flush eaves, non-historic asphalt shingles, and one exterior front-facing chimney. Windows are non-historic 4/4 metal double-hung sash.
328. 710 Pennsylvania (NC--less than fifty years old). 1-1/2 story, 3-bay, frame Minimal Traditional house with bungalow influence built ca. 1980. Exterior walls are brick veneer. Multi-plane/complex roof with box cornice, replacement asphalt shingles, and one exterior end chimney. Windows are non-historic single and triple 1/1 aluminum double-hung sash.
329. 713 Pennsylvania (C). 2-story, 4-bay, frame gabled-ell house built ca. 1900. The foundation is rusticated concrete block. Exterior walls are replacement vinyl siding. Hip roof with box cornice, original pressed/patterned metal, and one interior chimney. Windows are replacement 6/6 vinyl double-hung sash. Original cladding is visible behind the replacement vinyl.
330. 717 Pennsylvania (C). 1-story, 3-bay, frame airplane bungalow house built ca. 1920. The foundation is

United States Department of the Interior
National Park ServiceNational Register of Historic Places
Continuation SheetSection number 7 Page 46
Tennessee

Fairmount Neighborhood Historic District, Sullivan County,

continuous brick. Exterior walls are replacement aluminum siding. Side gable roof with box cornice and gable-end brackets, replacement asphalt shingles, and one interior end chimney. Windows are original 6/6 wood double-hung sash.

331. 718 Pennsylvania (C). 2-story, 3-bay, frame Queen Anne house with Colonial Revival influence built ca. 1900. Exterior walls are covered with replacement vinyl siding. Complex hip and gable roof with box cornice, replacement asphalt shingles, and one interior chimney. Windows are replacement 9/9 vinyl double-hung sash.
332. 720 Pennsylvania (C). 2-story, 2-bay, frame Queen Anne house with Craftsman influence built ca. 1890. Exterior walls are original weatherboard. Complex hip and gable roof with box cornice, replacement asphalt shingles, and one interior chimney. Windows are replacement single and paired 1/1 wood double-hung sash. Wrap-around porch with wood floor and round columns on brick piers sheltering an octagonal bay. The building is characterized by trefoil cutout bargeboard and mixed shingles (fishscale, serrated, squared) at the gables.
333. 721 Pennsylvania (C). 1-story, 3-bay, frame cape cottage house built ca. 1940. Exterior walls are replacement weatherboard. Side gable roof with box cornice, replacement asphalt shingles, and one interior chimney. Windows are original 8/1 wood double-hung sash.
334. 724 Pennsylvania (NC--less than fifty years old). 1-story, 2-bay, frame Minimal Traditional house built ca. 1965. The foundation is poured concrete. Exterior walls are brick veneer. Pyramidal roof with box cornice, original asphalt shingles, and one interior non-historic stone veneer chimney. Windows are paired and triple fixed single-lights over aluminum hoppers.
335. 725 Pennsylvania (C). 1-story, 3-bay, frame bungalow house built ca. 1925. The foundation is continuous brick. Exterior walls are original brick veneer. Side gable roof with box cornice and kicked eaves, replacement asphalt shingles, and one interior chimney. Windows are replacement 1/1 and 6/6 vinyl double-hung sash. This house has undergone modifications that impact its integrity of design and materials. The gable-roofed porch has been screened in and the roofline extended to accommodate a new gutter system. Carport added to side. Offset shed-roof dormer on front elevation. Brackets at gable ends.
336. 728 Pennsylvania (C). 2-story, 4-bay, frame Queen Anne house built ca. 1890. Exterior walls are original weatherboard. Cross gable roof with open cornice with exposed rafters, replacement asphalt shingles, and one interior chimney. Windows are original 2/2 wood double-hung sash. Wrap-around, hip-roofed porch with a solid plank railing, and slightly tapered columns.
337. 731 Pennsylvania (C). 1-story, 3-bay, frame bungalow house built ca. 1920. The foundation is concrete block. Exterior walls are replacement aluminum siding. Side gable roof with box cornice and gable-end brackets, replacement asphalt shingles, and one interior chimney. Windows are replacement combination 16-light fixed and 4/4 vinyl double-hung sash. Full basement; an enclosed sleeping porch and low-pitch, shed roof

United States Department of the Interior
National Park ServiceNational Register of Historic Places
Continuation SheetSection number 7 Page 47
Tennessee

Fairmount Neighborhood Historic District, Sullivan County,

dormer on the rear elevation. There are brackets at the gable ends and on the front, pitched-roof dormer. The house has an integrated shed roofed porch with replacement columns and railings.

338. 800 Pennsylvania. Vacant lot.

339. 801 Pennsylvania (C). 1-story, 3-bay, frame Minimal Traditional house with bungalow influence built ca. 1950. The foundation is beveled concrete block. Exterior walls are original aluminum siding. Multi-plane/complex roof with box cornice, original asphalt shingles, and one interior end chimney. Windows are original single-light aluminum casement.

340. 804 Pennsylvania (C). 2-story, 3-bay, brick/masonry gabled-ell house built ca. 1890. The foundation is continuous brick. Exterior walls are original brick. Gable on hip roof with box cornice and returning gable eaves, replacement seamed metal, and one interior chimney. Windows are original 1/1 segmental radial-arched double-hung windows except for the three 1st-floor bay half-round arch wood single-hung sash. Projecting five-sided bay on the front elevation with half-round brick arches over the windows. Other primary windows have segmented arched tops except for the Palladian in the attic story gable which has a 20-light divided pane flanked by two 9-light panes. Brick pattern is common bond with headers at every sixth course.

341. 807 Pennsylvania. Vacant lot.

342. 808 Pennsylvania (C). 2-story, 3-bay, frame gabled-ell house with Italianate influence built ca. 1880. The foundation is continuous brick. Exterior walls are replacement vinyl siding. Cross gable roof with box cornice and paired gable brackets and modillions, original slate, and one interior chimney. Windows are replacement 1/1 vinyl double hung topped by segmental arches. Slate roof has inset 'flower' patterns; oculus in the attic story gable.

Garage. 1-story, 2-bay, side gable roof, wood siding (C).

343. 811 Pennsylvania (C). 2-story, symmetrical 4-bay, frame unique 'four-plex' apartment/multifamily building with Queen Anne influence built ca. 1890. The foundation is continuous brick. Exterior walls are original wood siding. Complex hip and gable roof with open cornice with elaborate sawn bargeboards ornamenting the gables, original pressed/patterned metal, and two interior chimneys. Windows are original 1/1 wood double-hung sash. The double front doors suggest it was built as a duplex, now converted to a fourplex with separate apartments upstairs.

Garage. 1-story, 2-bay, wood doors and siding with hip roof (C).

344. 812 Pennsylvania (C). 2-story, 3-bay, frame Queen Anne house with Colonial Revival influence built ca. 1900.

United States Department of the Interior
National Park ServiceNational Register of Historic Places
Continuation SheetSection number 7 Page 48
Tennessee

Fairmount Neighborhood Historic District, Sullivan County,

The foundation is continuous brick. Exterior walls are replacement vinyl siding. Complex hip and gable roof with shallow box cornice, replacement seamed metal, and one interior chimney. Windows are replacement 1/1 vinyl double-hung sash.

Garage. 1-1/2 story, 2-bay, side gable roof with seamed metal cladding, open cornice with rafter tails (C).

345. 816 Pennsylvania (C). 2-story, 3-bay, frame Minimal Traditional house with bungalow influence built ca. 1930. The foundation is continuous brick. Exterior walls are replacement aluminum siding. Multi-plane/complex roof with raked box cornice, replacement asphalt shingles, and one exterior end chimney. Windows are original 2nd-story triple 3/1 double-hung and paired 1/1 wood double-hung sash.
346. 817 Pennsylvania (NC). 1-story, 3-bay, frame cape cottage house built ca. 1940. The foundation is rusticated concrete block. Exterior walls are brick veneer (possibly replacement) and the gable ends are clad in replacement vinyl siding. Side gable roof with box cornice and gable-end brackets, replacement asphalt shingles, and no chimney. Windows are replacement 1/1 aluminum double-hung sash. This house has undergone alterations to the degree that it no longer retains enough integrity to convey its significance.
347. 819 Pennsylvania (NC). 1-story, 4-bay, frame gabled-ell house built ca. 1930. The foundation is continuous brick. Exterior walls are replacement aluminum siding. Cross gable roof with box cornice, replacement asphalt shingles, and no chimney. Windows are original 1/1 aluminum double-hung sash. This house is out of scale with the character of its surrounding context. It does not contribute on the basis of design, materials, workmanship, or feeling.
348. 822 Pennsylvania (C). 1-1/2 story, 4-bay, frame Queen Anne Cottage house built ca. 1910. The foundation is continuous brick. Exterior walls are original wood siding. Complex hip and gable roof with box cornice, original corrugated metal, and one interior chimney. Windows are original combination 2nd-floor paired 8/1 single-hung, 1st-floor single-light, and 1/1 wood double-hung sash.
349. 900 Pennsylvania (C). 1-1/2 story, 3-bay, frame Queen Anne Cottage house built ca. 1910. The foundation is wet-laid stone. Exterior walls are replacement vinyl siding. Complex hip and gable roof with box cornice and gable returns, replacement asphalt shingles, and one interior chimney. Windows are original 1/1 wood double-hung sash. An attached car port has been added in the rear. The wraparound porch has a bricked banister wall in keeping with others along this section of Pennsylvania Avenue.
350. 901 Pennsylvania (C). 2-story, 4-bay, frame Queen Anne house built ca. 1885. The foundation is concrete block. Exterior walls are replacement brick veneer. Complex hip and gable roof with box cornice, replacement asphalt shingles, and one interior chimney. Windows are replacement 1/1 metal double-hung sash. Ornamented pediment over the primary entrance.
351. 904 Pennsylvania. Vacant lot.

United States Department of the Interior
National Park ServiceNational Register of Historic Places
Continuation SheetSection number 7 Page 49
Tennessee

Fairmount Neighborhood Historic District, Sullivan County,

352. 905 Pennsylvania (NC). 1-story, 3-bay, frame Ranch house built ca. 1955. The foundation is rusticated concrete block. Exterior walls are original asbestos. Side gable roof with flush eaves, replacement asphalt shingles, and no chimney. Windows are original combination horizontal 2/2 and one fixed single-light flanked by 2/2 wood double-hung sash. The plan of this house may be possibly understood as a simplified single-story cottage style. It appears to have been built during the late 1950s and while it adds to the eclectic character of the neighborhood, it does not contribute on the basis of its design, setting, and feeling.
353. 908 Pennsylvania (C). 2-story, 2-bay, frame gabled-ell house with Queen Anne influence built ca. 1890. The foundation is continuous brick. Exterior walls are original wood siding. Front gable roof with flush eaves, original pressed/patterned metal, and one interior chimney. Windows are replacement 1/1 vinyl double-hung sash. Front gable has two windows offset by a short projecting roof and surrounded by fish-scale cladding. There is an original ornamented verge board. The single-story projecting bay is clad in a repeating pattern of straight-edged and saw-toothed wood. Additions are present on the south and rear elevations.
354. 909 Pennsylvania (NC--less than fifty years old). 1-story, 4-bay, frame Ranch house built ca. 1970. The foundation is continuous brick. Exterior walls are brick veneer. Side gable roof with flush eaves, asphalt shingles, and one exterior end chimney. Windows are horizontal 2/2 aluminum double-hung sash.
355. 912 Pennsylvania (C). 1-1/2 story, symmetrical 3-bay, frame bungalow house built ca. 1925. Exterior walls are original brick veneer. Clipped gable roof with deep box cornice, replacement asphalt shingles, and one interior end chimney. Windows are original triple and paired 6/1 wood double-hung sash.
356. 913 Pennsylvania (C). 2-story, 2-bay, frame Four-Square house built ca. 1915. The foundation is continuous brick. Exterior walls are replacement vinyl siding. Pyramidal roof with shallow box cornice, replacement asphalt shingles, and one interior chimney. Windows are replacement combination 1/1 fixed and 1/1 aluminum double-hung sash.
- Garage. 1-story, 1-bay, wood doors, hip roof, rusticated block walls (C).
357. 917 Pennsylvania (C). 1-story, symmetrical 3-bay, frame bungalow house built ca. 1925. The foundation is continuous brick. Exterior walls are replacement aluminum siding. Side gable roof with deep box cornice, replacement seamed metal, and one exterior end and one interior chimney. Windows are replacement 1/1 vinyl double-hung sash.
358. 920 Pennsylvania (C). 2-story, 3-bay, frame Queen Anne house with Folk/Traditional influence built ca. 1880. Exterior walls are replacement vinyl siding. Complex hip and gable roof with box cornice, replacement asphalt shingles, and one interior chimney. Windows are replacement 1/1 vinyl double-hung sash. This house has an eclectic plan and massing and appears to be one of several distinctive 'pattern book duplexes' built in the neighborhood. It retains the majority of its characterizing features and materials. There are folk/traditional details in the porch elements and a finial at the peak of the octagonal tower.

United States Department of the Interior
National Park ServiceNational Register of Historic Places
Continuation SheetSection number 7 Page 50
Tennessee

Fairmount Neighborhood Historic District, Sullivan County,

359. 921 Pennsylvania (C). 1-story, 3-bay, frame bungalow house built ca. 1920. The foundation is continuous brick. Exterior walls are replacement vinyl siding. Front gable roof with box cornice and gable-end brackets, replacement asphalt shingles, and no chimney. Windows are original 4/1 wood double-hung sash.
360. 924 Pennsylvania (C). 1-1/2 story, 3-bay, frame bungalow house built ca. 1920. The foundation is continuous brick. Exterior walls are replacement aluminum siding. Side gable roof with box cornice and gable-end brackets, replacement asphalt shingles, and two interior chimneys. Exposed rafter tails in the gable-roofed dormer. Windows are replacement 4/4 vinyl double-hung sash.
361. 925 Pennsylvania (C). 1-story, 3-bay, frame bungalow house built ca. 1925. Exterior walls are replacement aluminum siding. Multi-plane/complex roof with box cornice, replacement asphalt shingles, and no chimney. Windows are original triple 3/1 wood double-hung sash.
362. 928 Pennsylvania (C). 1-1/2 story, 3-bay, frame Minimal Traditional house with Colonial Revival influence built ca. 1930. The foundation is beveled concrete block. Exterior walls are replacement aluminum siding. Side gable roof with box cornice and gable returns, replacement asphalt shingles, and one interior end chimney. Windows are original 6/6 wood double-hung sash.
363. 930 Pennsylvania (C). 1-story, 3-bay, frame bungalow house with Craftsman influence built ca. 1925. Exterior walls are original brick veneer. Multi-plane/complex roof with box cornice and enclosed brackets, replacement asphalt shingles, and one exterior end chimney. Windows are replacement 6/1 vinyl double-hung sash.
364. 931 Pennsylvania (C). 1-1/2 story, 4-bay, frame bungalow house built ca. 1920. The foundation is continuous brick. Exterior walls are original weatherboard. Side gable roof with open cornice with exposed rafter ends, replacement asphalt shingles, and one interior chimney. Windows are original 1st-floor paired and triple 12/1 and a fixed 2nd-story single-light flanked by 1/1 wood double-hung sash.

Pine Street

365. 110 Pine (NC--less than fifty years old). 2-story, 2-bay, frame irregular-plan house built ca. 1990. Exterior walls are replacement vinyl siding. Hip roof with box cornice, non-historic asphalt shingles, and no chimney. Windows are paired 3/1 wood double-hung sash.

Poplar Street

366. 301 Poplar (C). This park-like vacant lot is contiguous with an adjoining vacant lot (311 Poplar). It is characterized by its natural setting that is comprised of trees and ivy. It contributes on the basis of its setting and feeling.
367. 311 Poplar (C). Park-like, treed lot characterized by a natural setting of trees and thick ivy. It contributes on the basis of its setting and feeling.

United States Department of the Interior
National Park ServiceNational Register of Historic Places
Continuation SheetSection number 7 Page 51
Tennessee

Fairmount Neighborhood Historic District, Sullivan County,

368. 323 Poplar (C). 2-story, symmetrical 5-bay, frame Colonial Revival house built ca. 1930. Exterior walls are original brick veneer. Side gable roof with box cornice, replacement asphalt shingles, and one exterior brick chimney. Windows are original 6/1 wood double-hung sash.
369. 401 Poplar (NC). 1-story, 4-bay, frame irregular-plan house built ca. 1925. Exterior walls are brick veneer. Multi-plane/complex roof with box cornice, non-historic asphalt shingles, and no chimney. Windows are non-historic 1/1 wood double-hung sash. This house has undergone several unsympathetic changes and no longer contributes to the historic character of the district.
370. 409 Poplar (C). 1-story, 5-bay, frame Minimal Traditional duplex built ca. 1925. The foundation is concrete block. Exterior walls are original brick veneer. Multi-plane/complex roof with box cornice, replacement asphalt shingles, and one interior parged brick chimney. Windows are original divided lattice hopper and fixed 4/1 flanked by 3/1 wood double-hung sash.
371. 414 Poplar (C). 1-1/2 story, 6-bay, brick/masonry irregular-plan house with Colonial Revival influence built ca. 1905. Exterior walls are original brick. Hip roof with box cornice, replacement asphalt shingles, and two exterior brick chimneys. Windows are replacement 6/6 vinyl double-hung sash. Known as the 'Carriage House'. This structure contributes on the basis of its long association with the neighborhood as a carriage house. It has lost much of its original materials, setting and feeling, however it has popular association with 423 Spruce Street (1920s mansion built in the Beaux Arts style, Site #386).
372. 514 Poplar (NC--less than fifty years old). 1-story, 4-bay, frame Ranch house built ca. 1965. The foundation is concrete block. Exterior walls are brick veneer. Hip roof with box cornice, non-historic asphalt shingles, and no chimney. Windows are non-historic single-light wood casements.
373. 515 Poplar (C). 1-story, 7-bay, frame Ranch house built ca. 1950. Exterior walls are original asbestos. Side gable roof with box cornice, replacement asphalt shingles, and one interior brick chimney. Windows are replacement 6/6 vinyl double-hung sash.
374. 600 Poplar. Vacant lot.
375. 701 Poplar. Vacant lot.

Spruce Street

376. 207 Spruce (C). 2-story, symmetrical 6-bay, frame English Cottage Revival house built ca. 1930. The foundation is poured concrete. Exterior walls are original brick veneer. Multi-plane cross-gable roof with flush eaves, replacement asphalt shingles, and two prominent massive front-facing brick chimneys. Windows are original jack-arched 6/6 and 9/9 wood double-hung sash. Characterized by its twin gable facade and prominence of the brick chimneys.
377. 212 Spruce (C). 1-story, 3-bay, frame bungalow house built ca. 1925. The foundation is concrete block.

United States Department of the Interior
National Park ServiceNational Register of Historic Places
Continuation SheetSection number 7 Page 52
Tennessee

Fairmount Neighborhood Historic District, Sullivan County,

Exterior walls are replacement vinyl siding. Hip roof with box cornice, replacement asphalt shingles, and one interior brick chimney. Windows are original 4/1 wood double-hung sash. Hip-roof dormer. Integrated front porch.

378. 304 Spruce (NC--less than fifty years old). 2-story, 7-bay, frame apartment/multifamily building built ca. 2000. Exterior walls are vinyl siding. Multi-plane/complex roof with box cornice, non-historic asphalt shingles, and no chimney. Windows are non-historic 6/6 vinyl double-hung sash.
379. 322 Spruce (C). 2-story, 5-bay, frame Greek Revival house built in 1903. Exterior walls are original brick veneer. Complex hip and gable roof with box cornice, replacement asphalt shingles, and one interior brick chimney. Windows are original 1/1 wood double-hung sash. Two-story portico with fluted columns set on brick piers. First floor porch wraps around with curved railing and paired columns on brick piers. Exaggerated cornice. Decorative windows in gables.
380. 423 Spruce (C). 2-story, 3-bay, brick/masonry irregular plane house with Neo-Classical influence built ca. 1910. Exterior walls are original brick. Complex hip and gable roof with box cornice with elaborate modillions, original tile, and two interior brick chimneys. Windows are original with keyed arch-topped dormer windows, leaded transoms on the first floor, and otherwise 1/1 wood double-hung sash.
381. 424 Spruce (NC--less than fifty years old). 2-story, 5-bay, frame apartment/multifamily building built ca. 1995. Exterior walls are non-historic wood siding. Side gable roof with box cornice, non-historic asphalt shingles, and no chimney. Windows are 6/6 wood double-hung sash.
382. 500 Spruce (C). 2-story, 2-bay, frame irregular-plan house with Colonial Revival influence built ca. 1910. Exterior walls are replacement vinyl siding. Hip roof with box cornice and shed gable eaves, replacement asphalt shingles, and two interior brick chimneys. Windows are original with fixed transoms and sidelights flanking the entryway and 1/1 wood double-hung sash.
383. 501 Spruce (NC--less than fifty years old). 2-story, 5-bay, frame apartment/multifamily building built ca. 2000. Exterior walls are vinyl siding. Side gable roof with box cornice, asphalt shingles, and no chimney. Windows are non-historic 6/6 vinyl double-hung sash.
384. 504 Spruce (C). 1-1/2 story, 3-bay, frame center-gable house with Queen Anne influence built ca. 1900. The foundation is beveled concrete block. Exterior walls are original brick veneer. Side gable roof with box cornice with dentil molding, replacement asphalt shingles, and one interior parged brick chimney. Windows are original with an arched Palladian in the front gable, triple leaded panes in the dormer, leaded transoms, and 1/1 wood single-hung sash.
385. 508 Spruce (C). 1-1/2 story, 3-bay, frame center-gable house with Queen Anne influence built ca. 1900. The foundation is rusticated concrete block. Exterior walls are original brick veneer. Side gable roof with box cornice, replacement asphalt shingles, and one interior brick chimney. Windows are original with an arched

United States Department of the Interior
National Park ServiceNational Register of Historic Places
Continuation SheetSection number 7 Page 53
Tennessee

Fairmount Neighborhood Historic District, Sullivan County,

Palladian in the front gable, triple leaded panes in the dormer, leaded transoms, and 1/1 wood single-hung sash.

386. 512 Spruce (C). 1-story, 2-bay, frame Queen Anne house with Colonial Revival influence built ca. 1910. Exterior walls are replacement vinyl siding. Complex hip and gable roof with box cornice, replacement asphalt shingles, and one interior brick chimney. Windows are replacement with leaded transoms over the entryway and 1/1 vinyl double-hung sash. Characterized by its pyramidal central roof with offsetting gables and wrap-around porch supported by round columns on field-paneled wooden piers.
387. 516 Spruce (C). 1-1/2 story, 3-bay, frame Queen Anne Cottage house with Colonial Revival influence built ca. 1910. Exterior walls are replacement vinyl siding. Complex clipped hip and gable roof with box cornice, replacement asphalt shingles, and two interior brick chimneys. Windows are original 1/1 wood double-hung sash. Front porch spans three bays and it has a central gable feature that is typical of the Queen Anne stylistic influence.
388. 521 Spruce (C). 2-story, 3-bay, frame Queen Anne house with Colonial Revival influence built ca. 1900. The foundation is continuous brick. Exterior walls are replacement vinyl siding. Complex hip and gable roof with box cornice, replacement asphalt shingles, and one interior parged brick chimney. Windows are replacement with 8/3 in the front gable and 1/1 vinyl double-hung sash.
389. 522 Spruce (C). 2-story, 3-bay, frame Four-Square house built ca. 1925. Exterior walls are replacement vinyl siding. Hip roof with box cornice, replacement asphalt shingles, and one interior brick chimney. Windows are original with 4 8/3 double-hung windows in the front dormer and 1/1 wood double-hung sash. Hip-roof dormer has set of four multi-light fixed sash. Dentils along roofline, dormer, and porch. Front porch has round dwarf columns on brick piers.
- Garage. 1-story, 2-bay, hip roof, wood siding (C).
390. 601 Spruce (C). 2-story, 3-bay, frame Queen Anne house built ca. 1885. Exterior walls are original weatherboard. Side gable roof with box cornice and gable returns, replacement asphalt shingles, and no chimney. Windows are replacement with dormer single-light casements and 1/1 wood double-hung sash.
391. 605 Spruce (C). 2-story, 2-bay, frame Dutch Colonial Revival house with Colonial Revival influence built ca. 1920. The foundation is continuous brick. Exterior walls are original weatherboard. Gambrel roof with box cornice, replacement asphalt shingles, and one interior brick chimney. Windows are replacement 1/1 vinyl double-hung sash.
392. 609 Spruce (C). 1-story, 3-bay, frame bungalow house built ca. 1930. The foundation is beveled concrete block. Exterior walls are replacement vinyl siding. Side gable roof with box cornice and gable peak brackets, replacement asphalt shingles, and one interior brick chimney. Windows are original 3/1 wood double-hung sash.

United States Department of the Interior
National Park ServiceNational Register of Historic Places
Continuation SheetSection number 7 Page 54
Tennessee

Fairmount Neighborhood Historic District, Sullivan County,

393. 611 Spruce (C). 1-story, 3-bay, frame bungalow house with Craftsman influence built ca. 1925. Exterior walls are replacement brick veneer. Front gable roof with closed raked cornice and gable brackets, replacement asphalt shingles, and one exterior brick chimney. Gables are clad in original wood shake shingles. Windows are original 6/1 wood double-hung sash.
394. 707 Spruce (NC). 1-story, 4-bay, concrete block irregular-plan storage/warehouse building built ca. 1930. The foundation is concrete block. Exterior walls are replacement concrete block. Front gable with raised false front roof with flush eaves, original seamed metal, and no chimney. Windows are replacement 3/1 wood double-hung sash. This appears to be a commercial space converted to a residence and has undergone major unsympathetic alterations: chimneys removed, bay doors enclosed, and false brick veneer added to the front facade. As a result this building no longer conveys its historic significance.
395. 708 Spruce (NC--less than fifty years old). 1-story, 5-bay, frame ranch house with Colonial Revival influence built ca. 1975. The foundation is concrete block. Exterior walls are vinyl siding. Side gable roof with flush eaves, asphalt shingles, and one exterior brick chimney.
396. 716 Spruce (C). 1-story, 6-bay, frame bungalow house built ca. 1925. Exterior walls are original brick veneer. Side gable roof with box cornice and enclosed gable brackets, replacement asphalt shingles, and one front-facing exterior brick chimney. Windows are original and are predominantly 3/1 with two replacement 1/1 wood double-hung sash.

Taylor Street

397. 211 Taylor (C). 1-story, 2-bay, frame bungalow house built ca. 1925. Exterior walls are original brick veneer. Side gable roof with open cornice, sawn bargeboards and rafter ends, replacement asphalt shingles, and one exterior brick chimney. Windows are original 3/1 wood double-hung sash.
398. 215 Taylor (C). 1-story, 3-bay, frame bungalow house with English Cottage alterations built ca. 1930. Exterior walls are original brick veneer. Multi-plane/complex roof with flush eaves, replacement asphalt shingles, and one exterior and one interior brick chimney. Windows are original 6/1 wood double-hung sash. Characterized by eclectic features including projecting gable-front porch with exposed truss, square brick turret with half-round brick arch over the entryway, and the octagonal brick single-story bay.
399. 216 Taylor (C). 1-story, 3-bay, frame Queen Anne Cottage house built ca. 1910. The foundation is continuous brick. Exterior walls are replacement aluminum siding. Complex hip and gable roof with box cornice, original pressed/patterned metal, and one interior brick chimney. Windows are original 1/1 wood double-hung sash.
400. 218 Taylor (C). 1-story, 3-bay, frame Queen Anne Cottage house built ca. 1910. The foundation is continuous

United States Department of the Interior
National Park ServiceNational Register of Historic Places
Continuation SheetSection number 7 Page 55
Tennessee

Fairmount Neighborhood Historic District, Sullivan County,

brick. Exterior walls are original weatherboard. Complex hip and gable roof with box cornice, replacement asphalt shingles, and two interior brick chimneys. Windows are original 1/1 wood double-hung sash. Wrap-around porch with battered columns on brick piers.

401. 221 Taylor (C). 1-story, 3-bay, frame bungalow house with Craftsman influence built ca. 1925. Exterior walls are original brick veneer. Front gable roof with replacement asphalt shingles and chimney. Windows are original 3/1 wood double-hung sash.
402. 223 Taylor (NC--less than fifty years old). 1-1/2 story, 3-bay, frame gable front house built ca. 1980. The foundation is continuous brick. Exterior walls are vinyl siding. Front gable roof with box cornice, asphalt shingles, and no chimney. Windows are non-historic 6/6 and 1/1 vinyl double-hung sash.
403. 224 Taylor (C). 2-story, 3-bay, frame Queen Anne house built ca. 1890. The foundation is rusticated concrete block. Exterior walls are original weatherboard. Gable on hip roof with box cornice, replacement asphalt shingles, and no chimney. Windows are replacement 1/1 vinyl double-hung sash.
404. 225 Taylor (NC--less than fifty years old). 1-story, 3-bay, prefabricated frame gable-front house built ca. 1980. The foundation is concrete block. Exterior walls are vinyl siding. Front gable roof with box cornice, asphalt shingles, and no chimney. Windows are non-historic 1/1 vinyl double-hung sash.
405. 227 Taylor (C). 1-1/2 story, 3-bay, frame airplane bungalow house built ca. 1925. The foundation is continuous brick. Exterior walls are replacement vinyl siding. Side gable roof with box cornice, replacement asphalt shingles, and one exterior brick chimney. Windows are original 1/1 wood double-hung sash.
406. 228 Taylor. Vacant lot.
407. 231 Taylor (C). 1-story, 3-bay, frame bungalow house built ca. 1925. The foundation is continuous brick. Exterior walls are replacement vinyl siding. Multi-plane/complex roof with box cornice and enclosed gable brackets, replacement asphalt shingles, and one exterior brick chimney. Windows are original 1/1 wood double-hung sash.
408. 235 Taylor (C). 2-story, 3-bay, frame Four-Square house built ca. 1915. Exterior walls are original brick veneer. Hip roof with box cornice, replacement asphalt shingles, and brick chimney. Windows are original single-light vinyl sliding windows.
409. 236 Taylor. Vacant lot.
410. 300 Taylor (NC--less than fifty years old). 1-story, 3-bay, prefabricated frame gable-front house built ca. 1990. Exterior walls are wood siding. Front gable roof with box cornice, asphalt shingles, and no chimney. Windows are 1/1 wood double-hung sash.

United States Department of the Interior
National Park ServiceNational Register of Historic Places
Continuation SheetSection number 7 Page 56
Tennessee

Fairmount Neighborhood Historic District, Sullivan County,

411. 301 Taylor (C). 1-story, 3-bay, frame bungalow house with Craftsman influence built ca. 1925. Exterior walls are original brick veneer. Side gable roof with box cornice and gable brackets, replacement asphalt shingles, and one exterior and one interior chimney. Windows are original 4/1 and 3/1 wood double-hung sash.
412. 304 Taylor (C). 1-story, 2-bay, frame Queen Anne Cottage house built ca. 1900. The foundation is continuous brick. Exterior walls are replacement vinyl siding. Complex hip and gable roof with box cornice, replacement asphalt shingles, and one modern and one historic interior brick chimney. Windows are original 1/1 wood double-hung sash. This house is characterized by its clipped pyramidal roof with offset gables that are typical of the Queen Anne influences seen throughout the neighborhood.
413. 309 Taylor (C). 2-story, 3-bay, frame Four-Square house built ca. 1910. Exterior walls are replacement vinyl siding. Hip roof with box cornice, replacement asphalt shingles, and one interior parged brick chimney. Windows are original 1/1 wood double-hung sash.
414. 312 Taylor (C). 2-story, 3-bay, frame Queen Anne house built ca. 1890. The foundation is rusticated concrete block. Exterior walls are replacement vinyl siding. Complex hip and gable roof with a box cornice, original pressed/patterned metal, and one interior brick chimney. Windows are original 1/1 wood double-hung sash.
415. 313 Taylor. Vacant lot.
416. 315 Taylor (NC--less than fifty years old). 1-story, 4-bay, frame prefabricated house built ca. 2000. The foundation is poured concrete. Exterior walls are vinyl siding. Side gable roof with box cornice, asphalt shingles, and no chimney. Windows are non-historic 1/1 vinyl double-hung sash.
417. 316 Taylor (C). 2-story, 3-bay, frame Four-Square house built ca. 1920. Exterior walls are replacement vinyl siding. Complex hip and gable roof with box cornice, original pressed/patterned metal, and one interior brick chimney. Windows are original 1/1 wood double-hung sash.
418. 317 Taylor. Vacant lot.
419. 320 Taylor (C). 2-story, 4-bay, frame Queen Anne house with Colonial Revival influence built ca. 1890. Exterior walls are replacement vinyl siding. Complex hip and gable roof with box cornice, replacement asphalt shingles, and one interior brick chimney. Windows are original with one leaded glass pane (2nd-story) and 1/1 wood double-hung sashes.
420. 321 Taylor (C). 1-story, 3-bay, frame front gable house built ca. 1910. The foundation is rusticated concrete block. Exterior walls are replacement rolled asphalt. Complex hip and gable roof with box cornice, replacement asphalt shingles, and no chimney. Windows are replacement with quadruple 1/1 in the front gable and 1/1 vinyl double-hung sash.
421. 324 Taylor (C). 1-story, 3-bay, frame Queen Anne Cottage house built ca. 1900. Exterior walls are original

United States Department of the Interior
National Park ServiceNational Register of Historic Places
Continuation SheetSection number 7 Page 57
Tennessee

Fairmount Neighborhood Historic District, Sullivan County,

weatherboard. Complex hip and gable roof with box cornice, original pressed/patterned metal, and two interior brick chimneys. Windows are original and are wooden hooded 1/1 wood double-hung sash.

422. 325 Taylor (NC). 1-story, 3-bay, frame Queen Anne cottage house built ca. 1910. The foundation is continuous brick. Exterior walls are original weatherboard. Pyramidal roof with box cornice, original pressed/patterned metal, and two interior brick chimneys. Windows are original 1/1 wood double-hung sash. A recent fire has destroyed most of the upper floor of this structure, compromising the integrity of its form, materials, and design. As a result it no longer contributes to the district.
423. 328 Taylor (NC). 1-1/2 story, 4-bay, frame irregular-plan house built ca. 1930. Exterior walls are replacement vinyl siding. Side gable roof with flush eaves, replacement asphalt shingles, and one interior brick chimney. Windows are replacement single light vinyl casements. The entire front facade has been altered and enclosed, and clad with a recent concrete parging. Through alterations, this house has lost all integrity of materials and design and is therefore non-contributing.
424. 329 Taylor (C). 1-story, 3-bay, frame Queen Anne Cottage house built ca. 1910. The foundation is continuous brick. Exterior walls are replacement asbestos. Pyramidal roof with box cornice, replacement asphalt shingles, and two interior brick chimneys. Windows are original 1/1 wood double-hung sash.
425. 400 Taylor (C). 1-story, 3-bay, frame gabled-ell house with Queen Anne influence built ca. 1910. Exterior walls are replacement vinyl siding. Hip roof with box cornice, replacement corrugated metal, and one exterior brick chimney. Windows are replacement 1/1 vinyl double-hung sash.
426. 401 Taylor (C). 2-story, 2-bay, frame gabled-ell house with Queen Anne influence built ca. 1890. Exterior walls are original weatherboard. Complex hip and gable roof with box cornice, original pressed/patterned metal, and one interior brick chimney. Windows are original 1/1 wood double-hung sash.
427. 404 Taylor (C). 1-story, 3-bay, frame gabled-ell house built ca. 1910. The foundation is continuous brick. Exterior walls are replacement aluminum siding. Cross gable roof with box cornice, replacement asphalt shingles, and one interior brick chimney. Windows are original 1/1 wood double-hung sash.
428. 405 Taylor (C). 2-story, 3-bay, frame Queen Anne house built ca. 1890. The foundation is rusticated concrete block. Exterior walls are replacement aluminum siding. Complex hip and gable roof with box cornice, original pressed/patterned metal, and one interior brick chimney. Windows are original 1/1 wood double-hung sash.
429. 408 Taylor (C). 1-story, 3-bay, frame gabled-ell house built ca. 1915. Exterior walls are replacement rolled asphalt. Cross gable roof with box cornice, original pressed/patterned metal, and one interior brick chimney. Windows are original 8/1 wood double-hung sash.
430. 409 Taylor (C). 2-story, 3-bay, frame house with Queen Anne influence built ca. 1890. Exterior walls are

United States Department of the Interior
National Park ServiceNational Register of Historic Places
Continuation SheetSection number 7 Page 58
Tennessee

Fairmount Neighborhood Historic District, Sullivan County,

replacement vinyl siding. Complex hip and gable roof with box cornice, replacement asphalt shingles, and one interior brick chimney. Windows are replacement 1/1 wood double-hung sash.

431. 412 Taylor (NC--less than fifty years old). 1-story, 3-bay, frame gable-front house built ca. 1965. Exterior walls are aluminum siding. Front gable roof with box cornice, asphalt shingles, and no chimney. Windows are non-historic 1/1 vinyl double-hung sash.
432. 415 Taylor (NC). 2-story, 2-bay, frame Four-Square house built ca. 1915. The foundation is continuous brick. Exterior walls are replacement aluminum siding. Pyramidal roof with box cornice and paired brackets, replacement asphalt shingles, and no chimney. Windows are replacement 1/1 wood double-hung sash. This house has undergone significant alterations to the front porch and upper facade windows. It has a substantial loss of historic materials and no longer retains enough integrity to convey its significance.
433. 417 Taylor (C). 1-1/2 story, 2-bay, frame gable front house with Queen Anne Cottage influence built ca. 1910. The foundation is continuous brick. Exterior walls are replacement vinyl siding. Multi-plane/complex roof with box cornice, replacement asphalt shingles, and one interior brick chimney. Windows are replacement 1/1 vinyl double-hung sash.
434. 420 Taylor (C). 1-1/2 story, 5-bay, frame Queen Anne Cottage house built ca. 1890. The foundation is rusticated concrete block. Exterior walls are original weatherboard. Complex hip and gable roof with box cornice and gable returns, replacement asphalt shingles, and two interior brick chimneys. Windows are original 1/1 wood double-hung sash.
435. 429 Taylor (C). 2-story, 5-bay, frame Colonial Revival house built ca. 1915. Exterior walls are replacement weatherboard. Hip roof with box cornice and gable returns, replacement asphalt shingles, and two exterior brick end chimneys. Windows are replacement 6/6 vinyl double-hung sash.
436. 435 Taylor (C). 2-story, 3-bay, frame Four-Square house built ca. 1915. Exterior walls are replacement asbestos. Hip roof with box cornice, replacement asphalt shingles, and one interior parged brick chimney. Windows are replacement 1/1 vinyl double-hung sash.
437. 437 Taylor (C). 2-story, 3-bay, frame Four-Square house built ca. 1915. Exterior walls are original weatherboard. Pyramidal roof with closed raked cornice, replacement asphalt shingles, and one interior brick chimney. Windows are replacement 1/1 vinyl double-hung sash.
438. 512 Taylor (C). 1-1/2 story, 3-bay, frame bungalow house built ca. 1925. The foundation is continuous brick. Exterior walls are original wood siding. Front gable roof with box cornice, replacement seamed metal, and no chimney. Windows are original 3/1 wood double-hung sash.
439. 521 Taylor (C). 2-story, 4-bay, frame Queen Anne house built ca. 1890. Exterior walls are original brick

United States Department of the Interior
National Park ServiceNational Register of Historic Places
Continuation SheetSection number 7 Page 59
Tennessee

Fairmount Neighborhood Historic District, Sullivan County,

veneer. Complex hip and gable roof with box cornice and modillions, shed gable eaves, replacement asphalt shingles, and one interior brick chimney. Windows are original 1/1 wood double-hung sash.

440. 529 Taylor (C). 1-1/2 story, 3-bay, frame Queen Anne house with Colonial Revival influence built ca. 1900. Exterior walls are original weatherboard. Complex hip and gable roof with box cornice and gable returns, replacement asphalt shingles, and two interior parged brick chimneys. Windows are original with diamond orioles and an arch-topped Palladian in the front gable, and 1/1 wood double-hung sash.
441. 601 Taylor (C). 2-story, 3-bay, frame Queen Anne house with Colonial Revival influence built ca. 1900. Exterior walls are replacement vinyl siding. Complex hip and gable roof with box cornice and gable returns, replacement asphalt shingles, and no chimney. Windows are original 1/1 wood double-hung sash.
442. 609 Taylor (C). 2-story, 4-bay, frame Colonial Revival house with Queen Anne influence built ca. 1900. Exterior walls are brick veneer. Complex hip and gable roof with box cornice and modillions, replacement seamed metal roofing, and two interior brick chimneys. Windows are original 1/1 wood double-hung sash.
443. 612 Taylor (C). 1-story, 6-bay, frame English Cottage Revival house built ca. 1920. Exterior walls are original wood shingles. Hip roof with box cornice, replacement asphalt shingles, and one interior brick chimney. Windows are original 6/6 and 4/4 wood double-hung sash.
444. 615 Taylor (C). 1-story, 3-bay, frame bungalow house with Craftsman influence built ca. 1925. Exterior walls are original brick veneer. Front gable roof with box cornice and gable brackets, replacement asphalt shingles, and one exterior brick chimney. Windows are original 3/1 wood double-hung sash.
445. 617 Taylor (C). 2-story, 2-bay, frame Four-Square house built ca. 1915. Exterior walls are original brick veneer. Hip roof with box cornice, replacement asphalt shingles, and one exterior parged brick chimney. Windows are original 3/1 wood double-hung sash.
- Garage/multipurpose building, ca. 1930. 2-story, 2-bay, side gable with double wooden ground-floor sliding bay doors (C).
446. 629 Taylor (C). 1-story, 3-bay, frame bungalow house built ca. 1925. Exterior walls are original brick veneer. Side gable roof with box cornice and gable brackets, replacement asphalt shingles, and one exterior brick chimney. Windows are original 3/1 wood double-hung sash.
447. 631 Taylor (C). 1-story, 4-bay, frame bungalow house with Craftsman influence built ca. 1925. Exterior walls are original brick veneer. Multi-plane/complex roof with box cornice and gable brackets, replacement seamed metal, and no chimney. Windows are replacement 6/1 and triple 8/8 vinyl double-hung sash.
448. 701 Taylor (C). 1-story, 4-bay, frame English Cottage Revival house built ca. 1930. The foundation is

United States Department of the Interior
National Park ServiceNational Register of Historic Places
Continuation SheetSection number 7 Page 60
Tennessee

Fairmount Neighborhood Historic District, Sullivan County,

continuous brick. Exterior walls are replacement aluminum siding. Multi-plane/complex roof with flush eaves, replacement asphalt shingles, and one exterior front-facing brick chimney. Windows are original 4/4 wood double-hung sash.

449. 705 Taylor (C). 2-story, 2-bay, frame Four-Square house with bungalow influence built ca. 1930. Exterior walls are original brick veneer. Pyramidal roof with box cornice, replacement asphalt shingles, and one exterior brick chimney. Windows are original with an 8-light transom over the entryway and 6/1 vinyl double-hung sash.

450. 707 Taylor (C). 1-story, 4-bay, frame Minimal Traditional house with English Cottage Revival influence built ca. 1930. Exterior walls are original brick veneer. Cross gable roof with box cornice, replacement asphalt shingles, and one exterior brick chimney. Windows are original 3/1 wood double-hung sash.

451. 711 Taylor (C). 2-story, 3-bay, frame English Cottage Revival house built ca. 1925. Exterior walls are original brick veneer. Complex hip and gable roof with box cornice, replacement asphalt shingles, and one exterior brick chimney. Windows are original with 3/1 and 4/1 stone and brick segmental-arched wood double-hung sash.

Garage. 1-story, 1-bay, double hinged wooden doors with 8-lights each, hip roof, brick walls (C).

452. 715 Taylor (C). 2-story, 3-bay, frame English Cottage house built ca. 1930. Exterior walls are original brick. Multi-plane/complex roof with box cornice, replacement asphalt shingles, and one exterior brick chimney. Windows are original 3/1 wood double-hung sash.

453. 724 Taylor (C). 1-story, symmetrical 3-bay, frame cape cottage house built ca. 1945. Exterior walls are original aluminum siding. Side gable roof with flush eaves, replacement asphalt shingles, and one central interior brick chimney. Windows are original 8/8 and 6/6 wood double-hung sash.

454. 728 Taylor (NC--less than fifty years old). 1-story, 5-bay, frame Ranch house built ca. 1965. Exterior walls are replacement aluminum siding. Side gable roof with box cornice, replacement asphalt shingles, and one interior brick chimney. Windows are non-historic 8/8 and 4/4 wood double-hung sash.

Virginia Avenue

455. 400 Virginia. Vacant lot.

456. 403 Virginia (C). 1-story, symmetrical 3-bay, frame Piano Box Ranch house built ca. 1945. Exterior walls are original brick veneer. Hip roof with box cornice, replacement asphalt shingles, and five interior brick chimney. Windows are original 1/1 wood double-hung sash.

457. 407 Virginia (NC--less than fifty years old). 1-story, 4-bay, frame massed Ranch house built ca. 1965.

United States Department of the Interior
National Park ServiceNational Register of Historic Places
Continuation SheetSection number 7 Page 61
Tennessee

Fairmount Neighborhood Historic District, Sullivan County,

Exterior walls are brick veneer. Multi-plane/complex roof with box cornice, asphalt shingles, and one massive interior brick chimney. Windows are single-light metal sliding windows.

458. 411 Virginia (NC--less than fifty years old). 1-story, 4-bay, frame Ranch house built ca. 1965. The foundation is concrete block. Exterior walls are brick veneer. Side gable roof with box cornice, replacement asphalt shingles, and one interior brick chimney. Windows are replacement 6/6 vinyl double-hung sash.
459. 415 Virginia (NC--less than fifty years old). 1-story, 5-bay, frame Ranch house built ca. 1970. Exterior walls are aluminum siding. Side gable roof with box cornice, asphalt shingles, and one interior brick chimney. Windows are non-historic 1/1 wood double-hung sash.
460. 419 Virginia (NC--less than fifty years old). 1-story, 3-bay, frame Ranch house built ca. 1970. The foundation is poured concrete. Exterior walls are vinyl siding. Side gable roof with box cornice, replacement seamed metal, and one interior brick chimney. Windows are non-historic 4/4 and a fixed picture window flanked by 1/1 wood double-hung sash.
461. 425 Virginia (NC--less than fifty years old). 1-story, 3-bay, concrete block open-plan storage/warehouse built ca. 1970. The foundation is continuous brick. Exterior walls are concrete block. Front gable roof with flush eaves, replacement seamed metal, and no chimney. Windows are non-historic 6-light metal hopper windows.
462. 427 Virginia (NC--less than fifty years old). 1-story, 6-bay, frame Ranch duplex built ca. 1965. Exterior walls are brick veneer. Side gable roof with box cornice, replacement asphalt shingles, and no chimney. Windows are non-historic 24-light picture windows flanked by 4/4 wood double-hung sash.
463. 601 Virginia (NC--less than fifty years old). 1-story, 6-bay, frame Ranch house built ca. 1965. Exterior walls are brick veneer. Multi-plane/complex roof with box cornice, asphalt shingles, and one interior brick chimney. Windows are non-historic horizontal 2/2 metal double-hung sash.
464. 800 Virginia (C). 1-story, 3-bay, frame Ranch house with Craftsman influence built ca. 1950. Exterior walls are original weatherboard. Side gable roof with box cornice and gable brackets, replacement asphalt shingles, and one exterior brick chimney. Windows are original with trip 6-light hopper windows in the dormer and 15/15 wood double-hung sash. This house has many original materials and decorative elements combining a variety of styles: exposed rafter tails and brackets at the overhanging eaves, multi-light sash, a low-pitched shed roof dormer, and doors with side-lights. A pergola has been attached to the facade. This house contributes to the eclectic nature of the neighborhood and contributes based on design, material, setting, and feeling.
465. 804 Virginia (C). 1-1/2 story, 3-bay, frame bungalow house built ca. 1925. The foundation is continuous brick. Exterior walls are replacement vinyl siding. Side gable roof with box cornice and gable brackets, replacement asphalt shingles, and one exterior brick chimney. Windows are original 4/1 and 5/1 wood

United States Department of the Interior
National Park ServiceNational Register of Historic Places
Continuation SheetSection number 7 Page 62
Tennessee

Fairmount Neighborhood Historic District, Sullivan County,

double-hung sash. Characterized by a large, inset dormer with 2nd-story porch and shake shingle cladding, short battered wooden columns on brick piers.

Garage. 1-story, 1-bay, double hinged wooden doors, gable roof, wood siding (C).

466. 812 Virginia (C). 2-story, 5-bay, frame Queen Anne house with Colonial revival influence built ca. 1900. The foundation is continuous brick. Exterior walls are replacement aluminum siding. Complex hip and gable roof with box cornice, replacement asphalt shingles, and no chimney. Windows are replacement 1/1 wood double-hung sash.

467. 816 Virginia (C). 1-story, 2-bay, frame Minimal Traditional house built ca. 1945. Exterior walls are original asbestos. Pyramidal roof with box cornice, original asphalt shingles, and one exterior river-stone chimney. Windows are original horizontal 2/2 wood double-hung sash.

468. 820 Virginia (C). 2-story, 3-bay, frame bungalow house with Colonial Revival influence built ca. 1925. The foundation is continuous brick. Exterior walls are replacement vinyl siding. Front gable roof with box cornice and enclosed brackets, replacement asphalt shingles, and one exterior brick chimney. Windows are original 3/1 wood double-hung sash.

Garage. 1-story, 1-bay, wooden sliding door, gable-front roof, wood siding (C).

469. 900 Virginia (C). 1-story, 5-bay, frame bungalow house built ca. 1925. The foundation is continuous brick. Exterior walls are original brick veneer. Multi-plane/complex roof with box cornice, replacement asphalt shingles, and one interior brick chimney. Windows are replacement 8/8 vinyl double-hung sash.

Garage. 1-story, 1-bay, side-gable roof, brick walls (C).

470. 904 Virginia. Vacant lot.

471. 908 Virginia (C). 1-story, 2-bay, frame gable front house built ca. 1930. Exterior walls are replacement vinyl siding. Front gable roof with box cornice, replacement asphalt shingles, and one exterior brick chimney. Windows are original 3/1 wood double-hung sash.

472. 910 Virginia (C). 1-story, 3-bay, frame Minimal Traditional house built ca. 1940. The foundation is poured concrete. Exterior walls are original brick veneer. Side gable roof with box cornice, replacement asphalt shingles, and one exterior brick chimney. Windows are replacement 6/6 vinyl double-hung sash.

473. 912 Virginia (C). 1-story, 3-bay, frame bungalow house built ca. 1920. Exterior walls are replacement aluminum siding. Hip roof with box cornice, replacement asphalt shingles, and two interior brick chimneys. Windows are original 1/1 wood double-hung sash.

United States Department of the Interior
National Park ServiceNational Register of Historic Places
Continuation SheetSection number 7 Page 63
Tennessee

Fairmount Neighborhood Historic District, Sullivan County,

-
474. 915 Virginia (NC--less than fifty years old). 1-story, 3-bay, frame gable-front house with bungalow influence built ca. 1990. Exterior walls are brick veneer. Front gable roof with box cornice, asphalt shingles, and no chimney. Windows are non-historic 1/1 wood double-hung sash.
475. 924 Virginia (C). 1-story, 3-bay, frame bungalow house built ca. 1925. The foundation is continuous brick. Exterior walls are replacement aluminum siding. Gable on hip roof with box cornice, replacement asphalt shingles, and one interior brick chimney. Windows are replacement 1/1 wood double-hung sash.
476. 924A Virginia (NC). 2-story, 2-bay, frame irregular-plan converted storage built ca. 1970. Exterior walls are replacement vinyl siding. Side gable roof with box cornice, replacement asphalt shingles, and no chimney. Windows are replacement 1/1 with two original 3/1 wood double-hung sash. This building is a detached addition to the property at 924 Virginia Avenue. It is not clear if this building is fifty years old or older. Nevertheless, it is non-contributing on the basis of its design, setting, and feeling.
477. 930 Virginia (C). 1-story, 3-bay, frame Queen Anne Cottage house built ca. 1900. The foundation is continuous brick. Exterior walls are replacement vinyl siding. Gable on hip roof with box cornice and gable returns, original pressed/patterned metal cladding, and two interior brick chimneys. Windows are original 2/2 wood double-hung sash. Central doorway under a shed-roofed porch. Porch has slightly battered square wooden columns resting on a poured concrete floor.

8. Statement of Significance

Applicable National Register Criteria

(Mark "x" in one or more boxes for the criteria qualifying the property for National Register listing.)

- ☒ **A** Property is associated with events that have made a significant contribution to the broad patterns of our history.
- ☐ **B** Property is associated with the lives of persons significant in our past.
- ☒ **C** Property embodies the distinctive characteristics of a type, period, or method of construction or represents the work of a master, or possesses high artistic values, or represents a significant and distinguishable entity whose components lack individual distinction.
- ☐ **D** Property has yielded, or is likely to yield, information important in prehistory or history.

Criteria Considerations N/A

(Mark "x" in all boxes that apply.)

Property is:

- ☐ **A** owned by a religious institution or used for religious purposes.
- ☐ **B** removed from its original location.
- ☐ **C** a birthplace or grave
- ☐ **D** a cemetery.
- ☐ **E** a reconstructed building, object, or structure.
- ☐ **F** a commemorative property
- ☐ **G** less than 50 years of age or achieved significance within the past 50 years.

Narrative Statement of Significance

(Explain the significance of the property on one or more continuation sheets.)

9. Major Bibliographical References

Bibliography

(Cite the books, articles, and other sources used in preparing this form on one or more continuation sheets.)

Previous documentation on file (NPS): N/A

- ☐ preliminary determination of individual listing (36 CFR 67) has been requested
- ☐ previously listed in the National Register
- ☐ Previously determined eligible by the National Register
- ☐ designated a National Historic Landmark
- ☐ recorded by Historic American Buildings Survey # _____
- ☐ recorded by Historic American Engineering Record # _____

Areas of Significance

(Enter categories from instructions)

Community Planning and Development
Architecture

Period of Significance

1877-1960

Significant Dates

N/A

Significant Person

(complete if Criterion B is marked)

N/A

Cultural Affiliation

N/A

Architect/Builder

Multiple; Unknown

United States Department of the Interior
National Park ServiceNational Register of Historic Places
Continuation SheetSection number 8 Page 66

Fairmount Neighborhood Historic District, Sullivan County, Tennessee

Statement of Summary:

The Fairmount Neighborhood meets National Register Criteria A and C and is locally significant in the areas of architecture, and community planning and development. The neighborhood reveals a pattern of development associated with the urbanization and industrial growth of Bristol, TN (pop 25,573). The development of the neighborhood is in close proximity to the commercial downtown of Bristol, TN/VA (NR listed 5/22/2003), and numerous railroad lines. The proposed Fairmount Neighborhood district consists of an important group of historic residential structures that are situated on a matrix of streets that were planned and platted in the late nineteenth and early twentieth centuries.

The Fairmount Neighborhood's period of significance begins in 1877 with the partitioning of the King family's Lynwood Plantation, known as the Fairmount Forest. The sale of the land ushered in the first phase of residential construction and the development continued to about 1960. Afterwards, the neighborhood's development activity came to a close. The neighborhood was conceived and originally developed to attract wealthy homeowners. Features such as trolleys, a hotel, and green spaces were part of the original development. As the surrounding area transitioned to a more industrial economic base in the first half of the twentieth century, Fairmount increasingly became home to the growing working class population. This is reflected in the eclectic collection of architectural styles and forms found in the neighborhood including Queen Anne, Colonial Revival, bungalow, and Minimal Traditional.

Historic Background:

Bristol, Tennessee, is located within a rich mineral belt that spans parts of North Carolina, Georgia, Kentucky, and Alabama. The city's central proximity between Knoxville and Roanoke, Virginia, was crucial for its evolution from an Appalachian village, to that of a regional center for commerce, transportation, and a social hub that became the birthplace of country music.¹ Much of the town's development depended on the railroads as well as the entrepreneurial and enterprising spirit that accompanied the age.

Up to the 1850s, what was to become Bristol was part of a wilderness outback in the Appalachian hills of Tennessee and separated by vast distances to other towns of any size and influence. The Virginia and Tennessee Railroad opened the town to passenger and freight traffic as early as 1856.² Eventually, the lines of the East Tennessee and Virginia Railroad linked with the lines of the Virginia and Tennessee Railroad. The two lines came together on the plantation property of James King, who was a well connected land owner and influential minister. King saw an opportunity to build the town of Bristol at the point where the railroads met on his property. Although the Civil War halted development in Bristol, the post war years saw a resurgence in building the city. A new wave of merchants, mills, factories, iron producers, and many other enterprises flooded Bristol in the following decades. By the 1880s, Bristol's geographic location within the mineral belt led optimistic investors down a path that would spark an economic boom in the town. It was that boom that resulted in the formation and development of the Fairmount Neighborhood.

Fairmount was originally a densely forested area that was slightly southeast of the city. It belonged to James King, III who died in 1875.³ The King family was associated with the early settlement of the area and they owned

¹ In 1927, Ralph Peer of Victor Records came to Bristol in order to locate "old-time and hillbilly" musicians. In the process he discovered the Carter Family and Jimmie Rodgers. Both acts became nationwide successes and laid the groundwork for what was to become the country music industry as we know it today. See http://www.americanlibrary.gov/cgi-bin/page.cgi/es/tn/bristol_1 (accessed by authors on August 28, 2009).

² Phillips, V. N. *Bristol, Tennessee/Virginia: A History, 1852-1900*. Johnson City, Tenn: Overmountain Press, 1992., p. 50

³ *Ibid.*, p. 80.

United States Department of the Interior
National Park Service

National Register of Historic Places Continuation Sheet

Section number 8 Page 67 Fairmount Neighborhood Historic District, Sullivan County, Tennessee

Lynwood, a large plantation estate upon which the town of Bristol was laid out beginning in the 1850s. After King's death, his widow sold part of the plantation estate on the basis that the land did not produce anything of commercial value. On April 26, 1877 the land was partitioned and sold as lots suitable for residential development. Only a small portion of the plantation was sold at first and local businessmen grabbed up all the lots. Such folks included Major A. D. Reynolds, Marion L. Blackley, W. P. Brewer, and John B. Keller – some of the most influential men in Bristol at the time.

The news of the sale was seen as both positive and negative. The *Bristol News* celebrated the moment as a triumph of improvement that was sure to stimulate locals to invest in businesses in and around the new neighborhood. Indeed, as the neighborhood's development got underway, a flurry of new commercial enterprises sprang up that included new warehouses, brick works, a lumber yard, and a drug store.⁴ On the other hand, the land brought such a low price for the King family that the family attorney suggested it might have been better to continue growing crops instead of selling the property. Nevertheless, the transaction ushered in a new era of both urban and suburban growth.⁵

Much of that growth was dependent on the railroads, which opened up Bristol to new markets. New sources of capital transformed the city through a Northern campaign of industrial development committed to reorganizing the South along the lines of industry; thus the railroads were fairly well established in and around Bristol by 1880.⁶ The Norfolk & Western, South Atlantic & Ohio, and Virginia and Tennessee lines linked the Kentucky coal fields, timber, and iron ore deposits in North Carolina and Georgia along a common line that tied those industries to markets in the North and elsewhere. Other lines included Bristol & Elizabethton, Danville & Atlantic and the Danville & East Tennessee railroads that intersected with Bristol. The impact of the rail lines demonstrates how East Tennessee, among other areas of the mineral belt of the Upland South, became a focus for its natural resources and market proximity. As a result, waves of speculators poured in to invest in land purchases aimed at improvements of all kinds.⁷

One of the earliest investors was A. D. Reynolds, the brother of R. J. Reynolds (one of America's tobacco barons). A. D. Reynolds established a tobacco factory within Bristol, and introduced the area to bright leaf tobacco, which grew very well in parts of Tennessee. His introduction of industrial tobacco set a benchmark for manufacturing and its greater potential for the city.⁸ Moreover, the Reynolds brothers were two of the principal partners in the Bristol Land and Improvement Company, which owned and developed the earliest portion of the Fairmount neighborhood in 1877. The third partner was J. M. Barker. By the mid 1880s, the three men had substantially improved the Fairmount Neighborhood by grading between three to four miles of streets that were laid out on a grid. They had also built a number of houses on lots that measured on average about sixty feet across the front and were anywhere from one hundred fifty to two hundred feet deep. The original concept of the neighborhood included service alleys that allowed for common access to the properties from the rear. The service alleys concentrated the tending of livestock, wagon maintenance, and garden growing to the rear of the property with little or no interruption to the primary streets. Both of the Reynolds brothers built stately private residences in the Fairmount Neighborhood hoping to attract "desirable persons who proposed to build good homes".⁹

⁴ Ibid, p. 81.

⁵ Ibid.

⁶ Lee, Tom. *The Tennessee-Virginia Tri-Cities: Urbanization in Appalachia, 1900-1950*. Knoxville: University of Tennessee Press, 2005, p. 33.

⁷ Ibid.

⁸ "Bristol Tennessee & Virginia: Bristol Land and Improvement Company, Its Varied Industries, Its Progress and New Developments", p. 4

⁹ Ibid., p. 19.

United States Department of the Interior
National Park ServiceNational Register of Historic Places
Continuation SheetSection number 8 Page 68

Fairmount Neighborhood Historic District, Sullivan County, Tennessee

The Reynolds brothers envisioned the neighborhood as being a place where stately residences would be built: a place where the affluent members of the local society would live. At first, the most prominent streets in the neighborhood were Pennsylvania, McDowell, and Taylor. Some of the earliest houses along those streets were large Queen Anne structures that towered above the neighborhood and they defined much of the early residential character of Fairmount. The Reynolds brothers were also clearly influential in swaying affluent folks to build in the neighborhood. They both built houses that were regarded by most to be mansions, and they located them very near the Hotel Fairmount. A. D. Reynolds' house set precedent for scale, style, and design. As houses go for the times, his was unmatched by anything in all of Bristol. Others followed suit and built similar houses that followed the Queen Anne style.

Contemporaries of the day observed that "the part of the town laid off by this company lies beautifully, and no better resident property can be found anywhere. It is high and gently undulating, and from almost any part of it one can look down on the business portion of Bristol."¹⁰ The heart of the neighborhood was a short distance from the celebrated Union Depot in Virginia that was being constructed at the same time. The depot was constructed on a grand scale as a testimony to the progress that had been made since the original passenger and freight stop was built in the mid 1850s.

One of the premier features of Fairmount was its newly installed water mains along the principal streets that supplied the neighborhood residents with fresh water. There was no need for digging community wells, and much of the water supply came from a spring that was centrally located in the neighborhood. The water source provided adequate supply for fire hydrants and some of the original hydrants remain in the neighborhood to this day. Likewise, there was a nearby lake that provided recreation for those seeking relief from the rigors of daily life. The natural beauty of Fairmount was one of its most striking characteristics and it provided a serene setting for residents and passersby.

As map makers were eager to plat and map the new development, the dilemma of naming all the streets arose. The decision was made that the wives of A. D. Reynolds and J. M. Barker would decide on the names for the streets. Hastily they named the streets running north and south after the states they admired, while east to west streets were named for their favorite trees.¹¹ Today, all of the streets have retained the names given them by the wives of the original developers.

The Reynolds brothers understood the importance of the neighborhood's setting and location. As the neighborhood developed, it became engulfed on its edges by businesses that relied on the rail services for their livelihood. As improvements to the neighborhood gained momentum during the late 1880s, a fourth partner was added to the Bristol Land and Improvement Company, namely Thomas Ewing, a former Union Army General and a close personal friend to Lincoln before his death in 1865. Ewing was nationally famous for his involvement in the Quantrill Raids on Lawrence, Kansas, and even more so for his involvement in the trial for those who conspired to kill Lincoln.¹²

Ewing was living in New York after his retirement from politics. He turned to railroad investments and became the President of the Danville & Atlantic and the Danville and East Tennessee Railroad companies, which had

¹⁰ Ibid., p. 20.

¹¹ Phillips, V. N. *Bristol, Tennessee/Virginia: A History, 1852-1900*, p. 125

¹² Ewing's insistence that civilians should not be sentenced to death by military court marshal led him to represent Mary Surratt, Lewis Payne, George Atzerodt, and David Herold. All were found guilty and hanged by a military court without an appeal. See Thomas Ewing, Jr. online at http://en.wikipedia.org/wiki/Thomas_Ewing_Jr. Accessed by the author on 9/08/09.

United States Department of the Interior
National Park ServiceNational Register of Historic Places
Continuation SheetSection number 8 Page 69

Fairmount Neighborhood Historic District, Sullivan County, Tennessee

established lines into and out of Bristol.¹³ Ewing was confident that investments in the development of Bristol were sure to yield sizable profits and he bought one fourth of the shares in the Fairmount Neighborhood development.

With Ewing on board, the Bristol Land and Improvement Company embarked on a substantial quest to establish a hotel within the neighborhood. The location of the hotel on Spruce Street (which had been chosen earlier) was but a short distance from the Union passenger depot and the downtown commercial center of Bristol. Likewise, it was situated near a ten-acre lake that was a recreational destiny in the city. The hotel took on the name of "Fairmount," reflecting its owner's preoccupation with the development of the neighborhood. It was built on a grand scale and it was heralded as a crowning achievement within the city. It opened in July, 1889, and it had one hundred rooms with all the amenities one could desire, including a ballroom, billiards, a bowling alley, and luxurious interiors. The hotel (no longer extant) offered hack services to the nearby lake for its guests.¹⁴

In the years immediately preceding the construction of the hotel, a plan for a new and improved street car service was put into action. Two of the principals in the Bristol Land and Improvement Company, A. D. Reynolds and J. M. Barker, petitioned the State of Tennessee for a charter to organize and operate a public transportation facility. The charter was granted on December 1, 1886, and the street car service was promptly named Fairmount. When construction began for the street car line, it started from the proposed grounds of the Hotel Fairmount and worked its way through the Fairmount Neighborhood along Ash and Pennsylvania streets, and made its way back to downtown Bristol. Although the project was delayed for some time, it finally began operating using horse-drawn carts along a line of light gauge tracks in July, 1888. The facilities to house the street cars were built in the Fairmount Neighborhood along Ash and Pennsylvania streets. Within a couple of years the horse-drawn system was replaced with an electric trolley car that was laid out along the same lines as the former. No remnant of the street car system remain in place in the neighborhood.

By the 1890s, the neighborhood had grown to include the Hotel Fairmount, modern gridded streets that were paved, city water services, and state-of-the-art fire hydrants. Businesses of all kinds had sprung up in and around the neighborhood as Fairmount had quickly become the premier residential development in all of Bristol. A wave of construction began for those seeking to build their homes in the neighborhood. Many stately Victorian era houses were constructed on spacious lots. Other nearby attractions included Barker Park and a ten-acre resort lake (not located in the district).

There was another entity that was tied to the Bristol Land and Improvement Company, namely the Fairmount Land Company. It owned two hundred and eighteen acres and its president was Samuel King, one of the members of the King family that owned the Lynwood Plantation upon which the Fairmount Neighborhood was built. Although it is unclear how the two land companies related to each other, ultimately a master plat of a larger neighborhood was developed around the turn of the 20th century. The plat was very extensive and ambitious. Considering the rate of infill for the first two decades of development (which was slow), it seemed monumental to imagine that the proposed neighborhood would mature to the scale they proposed. Nevertheless, the plat shows the intended design of the neighborhood, its streets, and its potential for residential density. To be sure, the anticipation for continued growth was based on the amazing boom that had taken place in Bristol over the past decade and a half.

The plat is divided at its middle, roughly between Maple and Chestnut streets. The Fairmount Land Company controlled the southern half of the neighborhood, which today is distinctly different from the northern half that was

¹³ *Bristol Tennessee & Virginia: Bristol Land and Improvement Company, Its Varied Industries, Its Progress and New Developments*, p. 20.

¹⁴ The Hotel Fairmount burned down in 1901 and a sizable residential structure was built in its place. The house was built directly on the foundation of the hotel, which is today 322 Spruce Street (inventory number 379). Phillips, V. N. *Bristol, Tennessee/Virginia: A History, 1852-1900*, pp. 90, 91. See also, "Bristol Tennessee & Virginia: Bristol Land and Improvement Company, Its Varied Industries, Its Progress and New Developments", p. 18.

United States Department of the Interior
National Park ServiceNational Register of Historic Places
Continuation SheetSection number 8 Page 70

Fairmount Neighborhood Historic District, Sullivan County, Tennessee

owned by the Bristol Land and Improvement Company. The northern section of Fairmount developed earlier and the residential stock emphasized (at first) more formal architecture that included the Hotel Fairmount and many sizable houses. Likewise, the trolley system ran through the northern section of the neighborhood and it was intricately associated with the Bristol Land and Improvement Company and its principal owners. The southern portion of the neighborhood appears to have developed as a working class section of Bristol. The houses are much smaller, less ornate, and appear to have developed from the 1940s to the 1970s.

By 1915, the neighborhood was indeed a collection of various house types and styles that gave Fairmount an eclectic appeal. Bristol was a booming corporate center for commerce, industry, and entertainment venues as well. One such venue was baseball. The sport had gained in national popularity during the nineteenth century and was a growing national pastime in cities all over America. As towns became more corporate, the notion of competition spilled over to the amateur leagues who often named their teams after the towns they were from. In 1911, the Bristol Boosters, Johnson City Soldiers, and Knoxville Reds were part of an Appalachian League that also included the Middlesboro Colonels and Morristown Jobbers.¹⁵

Each city that sponsored a team also provided a field on which the teams could play. The Appalachian League Ball Park that was home to the Bristol Boosters was located in the Fairmount Neighborhood, very near the home of A. D. Reynolds. The field was highly visible. Unfortunately the Boosters team was short lived as they played their last game in Fairmount in 1913. No longer extant, the field occupied a space between Virginia and Carolina avenues as well as Poplar Street. The trolley car provided service to the field and its line passed in full view of the park. The field was a prominent feature of the neighborhood and, like the trolley car service, it tied the most popular leisure activity of the day with the municipal and commercial aspects of the town, thus adding another layer of social importance to the Fairmount neighborhood.

Fairmount neighborhood's popularity continued to grow throughout the first quarter of the twentieth century. The famous panoramic artist, Thaddeus M. Fowler, was commissioned to create a map of Bristol, TN/VA. Fowler was one of the nation's leading panoramic artists and his collection of works is the most substantial in the Library of Congress today. The margins of the map feature a number of Bristol businesses on both sides of the state line. The list of businesses includes Stone Huling Lumber Company, The King Printing Company, and the Sparger Mill Company, along with institutions such as banks, the Bristol Post Office, and the YMCA.

His panoramic view of the town includes the business district and rail facilities. The Union Depot is roughly at the center of the map, but the Fairmount neighborhood figures into the scene as the most prominent feature of the map, occupying nearly one third of the panoramic vista. In clear view are the streets, trolley lines, houses, alleys, and the Appalachian League Ball Park. One interesting feature in the image is the use of automobiles, which replaced the trolleys by about 1916.¹⁶

By the 1920s, much of the Fairmount neighborhood was documented by the Sanborn Insurance Company. The maps they created show the depth of development that had occurred and the variety of building footprints that represented the housing stock. The maps show that Pennsylvania, Ash, Taylor, and Carolina streets were the most densely developed. All of the streets in Fairmount had some degree of residential housing built along them; however, it appears that those streets that hosted the trolley and/or were closest to the Union Depot and commercial center of Bristol developed first. Due to the growth of the neighborhood and its local popularity, it was decided by city officials in 1925 to build the new Fairmount Elementary School within the subdivision. The school was located on

¹⁵ See http://en.wikipedia.org/wiki/Appalachian_League (accessed by authors on 09/17/09).

¹⁶ See: Bristol Historical Association, *The Passing Years...History in Pictures, Bristol, Virginia-Tennessee 1700s to 1950s*, B&B Print Media Group, 1993, p. 92.

United States Department of the Interior
National Park ServiceNational Register of Historic Places
Continuation SheetSection number 8 Page 71

Fairmount Neighborhood Historic District, Sullivan County, Tennessee

Cypress Street, adjacent to the Hotel Fairmount property. Currently a new elementary school is being built in its place.

The area anchored by the towns of Johnson City, Kingsport, and Bristol underwent industrial development brought tremendous growth to the cities and the region in general. The three cities combined to form a conglomeration that came to be known as the "Tri-Cities" area of East Tennessee. The transformation from an agricultural economy to that of an industrial one meant that workers of all sorts were in demand to occupy jobs in the factories, warehouses, rail facilities, lumber yards and other textile operations. The demand for labor in and around Bristol was strong during the 1920s leading to strong population growth in the city.¹⁷ A myriad of industries were in place all around Bristol, in particular many were in close proximity to Fairmount. The neighborhood became attractive to a new class of mid-level wage earners who built more modest houses than was previously seen in the neighborhood. Primarily the bungalow plan, in an assortment of styles and sizes, became the house type of choice among would-be residents of Fairmount.

By this time the emphasis on high style housing and elite citizenry that was promoted by the Reynolds brothers and others was replaced with the reality that Fairmount would be home to the rising middle class. The Sanborn maps show a substantial increase in the numbers of houses that began to dot the streets; Florida, Georgia, Maryland, Maple, and Cypress streets, which had been slow to develop, were now filled up. Modest houses were constructed that included the popular gabled ell plan along with Queen Anne cottages. The scale of housing was quite different from the earlier period of development. Houses were much less ornate and constructed of cheaper materials. Nevertheless, the new housing stock blended with the earlier residential fabric to create an eclectic architectural appeal and a mixture of socio-economic classes within the neighborhood.

Revival styles also swept through the neighborhood during the 1930s and 1940s. A number of Colonial Revival houses were built as were English Cottage and Dutch Colonial houses. To be sure, in terms of the number of housing units, the most substantial period of development for the neighborhood was roughly between 1920 and 1940 as the city of Bristol continued to grow. Houses during this time frame continued to be fairly modest in scale and ornamentation. Afterwards, development slowed in the district due to the limited availability of choice lots in the upper portion of Fairmount (north of Maple Street). While a limited number of were still built in the neighborhood after this time, the focus for development shifted to the area directly to the south.

Today the neighborhood continues to be home to a mix of architectural styles and economic classes. In recent years several multi-family apartment buildings were built along Cypress Street and Fairmount Elementary School was replaced with a modern school building. Other than these changes little modern infill is seen within the district. Material alterations in terms of siding and replacement materials is fairly minimal and the neighborhood retains integrity of workmanship, feeling, setting, and design.

¹⁷ See Lee, Tom. *The Tennessee-Virginia Tri-Cities: Urbanization in Appalachia, 1900-1950*. Chapter Two "An Abundance of Labor at a Reasonable Cost" pp. 53-90. This chapter explains the relationship of labor to the various industries associated with the Tri-Cities conglomeration.

United States Department of the Interior
National Park Service

National Register of Historic Places Continuation Sheet

Section number 9 Page 72

Fairmount Neighborhood Historic District, Sullivan County, Tennessee

Bibliographic References:

Author Unknown, "Bristol Tennessee & Virginia: Bristol Land and Improvement Company, Its Varied Industries, Its Progress and New Developments", (publisher unknown), 1889

This source is a pamphlet that appears to be part of a booster program that was sponsored by the Bristol Land and Improvement Company.

Fairmount Land Co. and Bristol Land & Improvement Plat, ca. 1900.

http://www.americaslibrary.gov/cgi-bin/page.cgi/es/tn/bristol_1

http://en.wikipedia.org/wiki/Thomas_Ewing,_Jr.

Lee, Tom. *The Tennessee-Virginia Tri-Cities: Urbanization in Appalachia, 1900-1950*. Knoxville: University of Tennessee Press, 2005

Phillips, V. N. *Bristol, Tennessee/Virginia: A History, 1852-1900*. Johnson City, Tenn: Overmountain Press, 1992

T. M. Fowler, "Panoramic View of Bristol Virginia/Tennessee", 1912.

Sanborn Map Company, Insurance Maps of Bristol, Virginia/Tennessee, 1922 – Updated 1954.
Pages 85, 87-93, 100-102.

Fairmount Neighborhood Historic District
Name of Property

Sullivan County, TN
County and State

10. Geographical Data

Acreage of Property Approximately 164 Bristol Tenn-VA 206 SW

UTM References

(place additional UTM references on a continuation sheet.)

1	17	395135	4049377
	Zone	Easting	Northing
2	17	395837	4049608

3	17	395586	4050234
	Zone	Easting	Northing
4	17	394744	4050353

☐ See continuation sheet

Verbal Boundary Description

(Describe the boundaries of the property on a continuation sheet.)

Boundary Justification

(Explain why the boundaries were selected on a continuation sheet.)

11. Form Prepared By

name/title Fred J. Rogers & R. Glen Payne, Consultants
organization Preservation Services and Technology Group, LLC date September, 2009
street & number 206 B Orchard Drive telephone 859-270-3413
city or town Nicholasville state KY zip code 40356

Additional Documentation

submit the following items with the completed form:

Continuation Sheets

Maps

A USGS map (7.5 Or 15 minute series) indicating the property's location

A Sketch map for historic districts and properties having large acreage or numerous resources.

Photographs

Representative black and white photographs of the property.

Additional items

(Check with the SHPO) or FPO for any additional items

Property Owner

(Complete this item at the request of SHPO or FPO.)

name More than fifty
street & number N/A telephone N/A
city or town N/A state N/A zip code N/A

Paperwork Reduction Act Statement: This information is being collected for applications to the National Register of Historic Places to nominate properties for listing or determine eligibility for listing, to list properties, and to amend existing listing. Response to this request is required to obtain a benefit in accordance with the National Historic Preservation Act, as amended (16 U.S.C. 470 *et seq.*)

Estimated Burden Statement: Public reporting burden for this form is estimated to average 18.1 hours per response including time for reviewing instructions, gathering and maintaining data, and completing and reviewing the form. Direct comments regarding this burden estimate or any aspect of this form to the Chief, Administrative Services Division, National Park Service, P. O. Box 37127, Washington, DC 20013-7127; and the Office of Management and Budget, Paperwork Reductions Projects (1024-0018), Washington, DC 20303.

United States Department of the Interior
National Park Service

National Register of Historic Places Continuation Sheet

Section number 10 Page 73
Tennessee

Fairmount Neighborhood Historic District, Sullivan County,

Verbal Boundary Description

The Fairmount Neighborhood Historic District is roughly bounded beginning at the corner of Taylor Street and Pennsylvania Avenue and continuing east along Taylor to the corner Florida Avenue; then moving south along Florida Avenue to the intersection of Maple Street; then moving west along Maple Street to Pennsylvania Avenue; and moving along Pennsylvania back to the corner of Taylor Street. The boundaries are drawn to include the rear lines of the properties that front the streets mentioned. A map of the boundaries is included with this nomination.

Boundary Justification

The boundaries of the Fairmount Neighborhood Historic District include only those properties that are historically related to the development and evolution of the neighborhood as it was associated with the Bristol Land and Improvement Company. It contains the most intact collection of historic resources that best represent the development of the district.

United States Department of the Interior
National Park ServiceNational Register of Historic Places
Continuation SheetSection number PHOTOS Page 74

Fairmount Neighborhood Historic District, Sullivan County, Tennessee

Photos by Glen Payne and Fred Rogers
Photo dates: February and October, 2009

There are a total of 53 photographs. Each photograph is numbered from 0001 to 0053. The numbers are written on the back of each printed photograph and the same numbers are used to match the images submitted on the CD-R media. The image numbers are keyed to an accompanying photograph-keyed map, which identifies the vantage points the image was taken from. The accompanying map does not include leading zeros for better readability. The list below follows the format *photo number, description*.

<u>Photo #</u>	<u>Description</u>
0001	Facing east, view of north side of 200 block of Taylor Street.
0002	Facing north, view of house at 227 Taylor Street.
0003	Facing east, view of park-like lot at 313 Pennsylvania Avenue.
0004	Facing southeast, view of west side of 300 block of Pennsylvania Avenue.
0005	Facing southwest, view of stone steps at 317 Pennsylvania Avenue.
0006	Facing southeast, view of house at 312 Lynwood Street.
0007	Facing northeast, view of north side of 600 block of Ash Street.
0008	Facing southeast, view of house at 622 Ash Street.
0009	Facing southwest, view of south side of 700 block of Ash Street.
0010	Facing southwest, view of house at 618 Pennsylvania Avenue.
0011	Facing west, view of house at 516 Pennsylvania Avenue.
0012	Facing southwest, view of house at 602 Kentucky Avenue.
0013	Facing northeast, view of south side of 700 block of Spruce Street.
0014	Facing northeast, view of south side of 300 block of Spruce Street.
0015	Facing northeast, view of south side of 800 block of Pennsylvania Avenue.
0016	Facing southeast, view of west side of 800 block of Virginia Avenue.
0017	Facing northeast, view of south side of 900 block of Pennsylvania Avenue.
0018	Facing northwest, view of west side of 900 block of Pennsylvania Avenue.
0019	Facing northeast, view of north side of 900 block of Kentucky Avenue.
0020	Facing southwest, view of house at 930 Virginia Avenue.
0021	Facing northeast, view of garage at 1019 Florida Avenue.
0022	Facing southwest, view of house at 926 Florida Avenue.
0023	Facing northeast, view of east side of 900 block of Georgia Avenue.
0024	Facing northeast, view of north side of 800 block of Maryland Avenue.
0025	Facing northeast, view of house at 714 Cypress Street.
0026	Facing northwest, view of alley between Georgia and Florida Avenues.
0027	Facing southwest, view of west side of 700 block of Georgia Avenue.
0028	Facing north, view of east side of 800 block of Georgia Avenue.
0029	Facing northwest, view of house at 728 Georgia Avenue.

United States Department of the Interior
National Park ServiceNational Register of Historic Places
Continuation SheetSection number PHOTOS Page 75

Fairmount Neighborhood Historic District, Sullivan County, Tennessee

<u>Photo #</u>	<u>Description</u>
0030	Facing northwest, view of alley between Maryland and Georgia Avenues.
0031	Facing northeast, view of south side of 600 block of Cypress Street.
0032	Facing north, view of house at 719 Georgia Avenue.
0033	Facing southwest, view of house at 712 Georgia Avenue.
0034	Facing southwest, view of house at 708 Georgia Avenue.
0035	Facing southeast, view of east side of 700 block of Maryland Avenue.
0036	Facing northwest, view of east side of 600 block of Spruce Street.
0037	Facing east, view of garage at 604 Florida Avenue.
0038	Facing northwest, view of west side of 500 block of Georgia Avenue.
0039	Facing east, view of east side of 600 block of Georgia Avenue.
0040	Facing northwest, view of east side of 500 block of Maryland Avenue.
0041	Facing southwest, view of house at 423 Spruce Street.
0042	Facing southwest, view of south side of 400 block of Poplar Street.
0043	Facing north, view of house at 711 Taylor Street.
0044	Facing east, view of corner of Georgia Avenue and Taylor Street.
0045	Facing east, view of north side of 700 block of Taylor Street.
0046	Facing southwest, view of house at 418 Maryland Avenue.
0047	Facing northeast, view of house at 401 Maryland Avenue.
0048	Facing northwest, view of house at 529 Taylor Street.
0049	Facing southeast, view of east side of 400 block of Maryland Avenue.
0050	Facing east, view of north side of 400 block of Taylor Street.
0051	Facing southeast, view of east side of 300 block of Carolina Avenue.
0052	Facing west, view of south side of 400 block of Taylor Street.
0053	Facing southeast, view of house at 420 Taylor Street.

Inventory Map

Fairmount Neighborhood Historic District

Bristol, Sullivan County, Tennessee



Photograph-Keyed Map

Fairmount Neighborhood Historic District
Bristol, Sullivan County, Tennessee

Photos by: Glen Payne

Photo dates: February and October 2009



There are 53 photographs in total, numbered here to match the images submitted on CD-R media. The image numbers are keyed to the photograph log found on continuation sheets for this district. For better readability, this map does not include leading zeros for the image numbers.

UNITED STATES DEPARTMENT OF THE INTERIOR
NATIONAL PARK SERVICE

NATIONAL REGISTER OF HISTORIC PLACES
EVALUATION/RETURN SHEET

REQUESTED ACTION: NOMINATION

PROPERTY Fairmont Neighborhood Historic District
NAME:

MULTIPLE
NAME:

STATE & COUNTY: TENNESSEE, Sullivan

DATE RECEIVED: 6/16/10 DATE OF PENDING LIST: 7/15/10
DATE OF 16TH DAY: 7/30/10 DATE OF 45TH DAY: 7/31/10
DATE OF WEEKLY LIST:

REFERENCE NUMBER: 10000510

REASONS FOR REVIEW:

APPEAL: N DATA PROBLEM: N LANDSCAPE: N LESS THAN 50 YEARS: N
OTHER: N PDIL: N PERIOD: N PROGRAM UNAPPROVED: N
REQUEST: N SAMPLE: N SLR DRAFT: N NATIONAL: N

COMMENT WAIVER: N

☒ ACCEPT ☐ RETURN ☐ REJECT 7.30.10 ~~7-10-30~~ DATE

ABSTRACT/SUMMARY COMMENTS:

Entered in
The National Register
of
Historic Places

RECOM./CRITERIA _____

REVIEWER _____ DISCIPLINE _____

TELEPHONE _____ DATE _____

DOCUMENTATION see attached comments Y/N see attached SLR Y/N

If a nomination is returned to the nominating authority, the nomination is no longer under consideration by the NPS.

































































































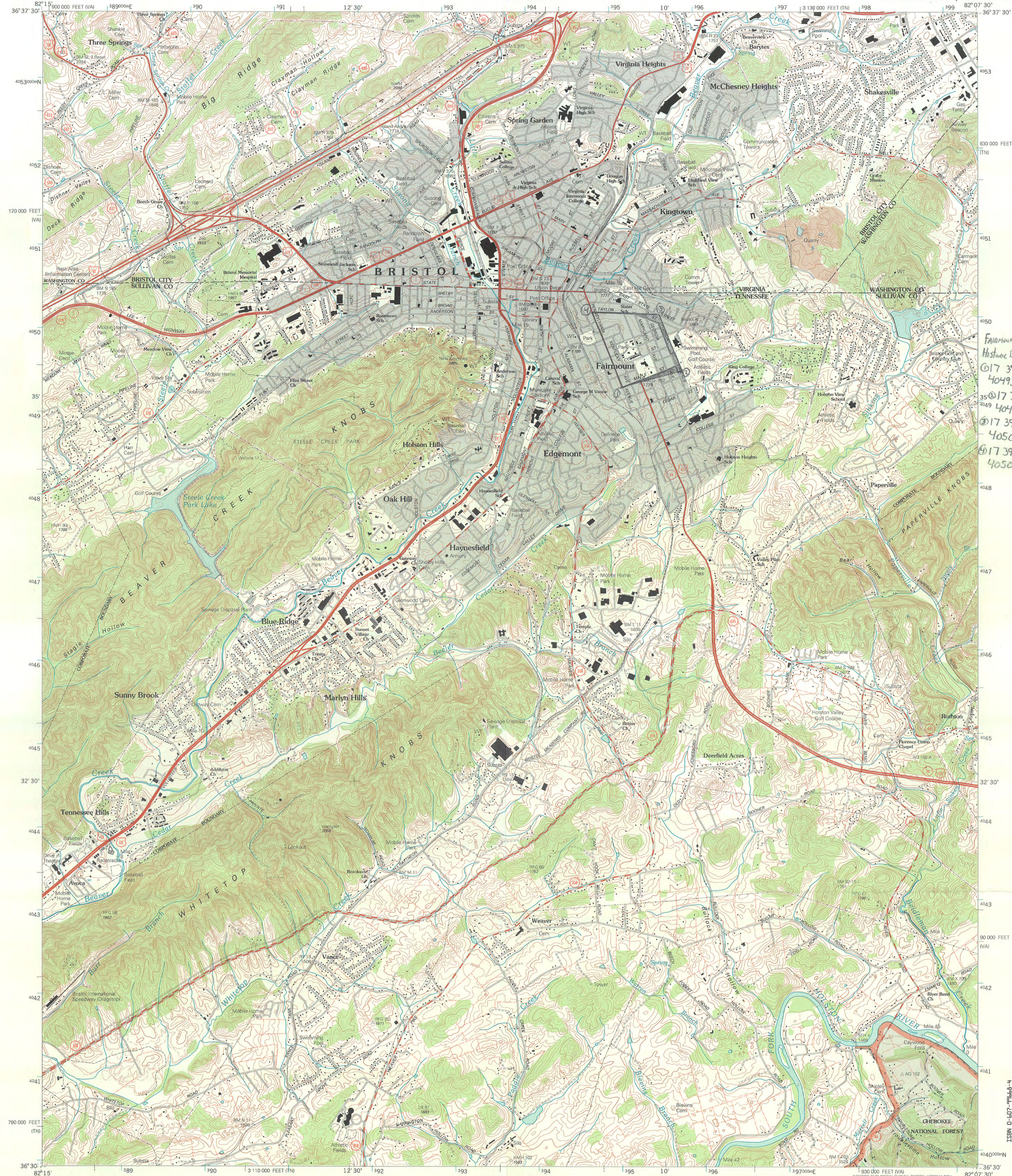




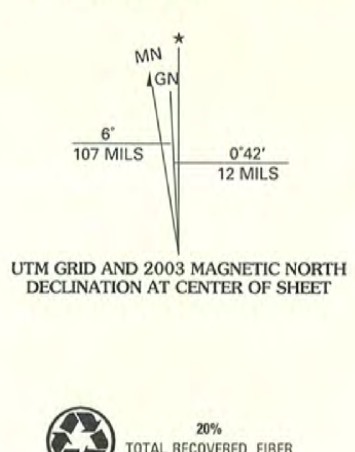




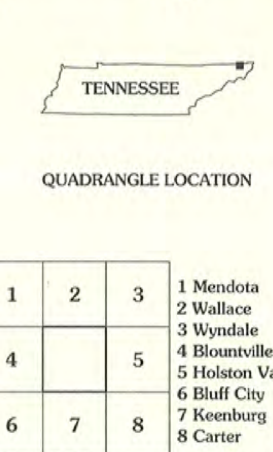




Produced by the United States Geological Survey 1991
Revision by USDA Forest Service 2003
Topography compiled 1959. Planimetry derived from imagery taken 1997 and other sources. Public Land Survey System and survey control current as of 2002. Boundaries current as of 2003.
North American Datum of 1927 (NAD 27). Projection: Tennessee coordinate system, (Lambert conformal cone). 10 000-foot ticks: Tennessee coordinate system and Virginia coordinate system, north zone
Blue 1000-meter Universal Transverse Mercator ticks, zone 17
North American Datum of 1983 (NAD 83) is shown by dashed corner ticks
The values of the shift between NAD 27 and NAD 83 for 7.5-minute intersections are obtainable from National Geodetic Survey NADCON software
Non-National Forest System lands within the National Forest
Inholdings may exist in other National or State reservations
This map is not a legal document. Public lands are subject to change and leasing, and may have access restrictions; check with appropriate offices
Obtain permission before entering private lands



SCALE 1:24 000
CONTOUR INTERVAL 20 FEET
SUPPLEMENTARY CONTOUR INTERVAL 10 FEET
NATIONAL GEODETIC DATUM OF 1927
TO CONVERT FROM FEET TO METERS, MULTIPLY BY 0.3048
THIS MAP COMPLIES WITH NATIONAL MAP ACCURACY STANDARDS
FOR SALE BY U.S. GEOLOGICAL SURVEY, P.O. BOX 25286, DENVER, COLORADO 80225
AND TENNESSEE DEPARTMENT OF CONSERVATION, DIVISION OF GEOLOGY,
NASHVILLE, TENNESSEE 37243
A FOLDER DESCRIBING TOPOGRAPHIC MAPS AND SYMBOLS IS AVAILABLE ON REQUEST

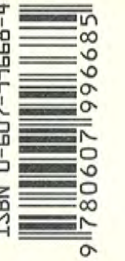


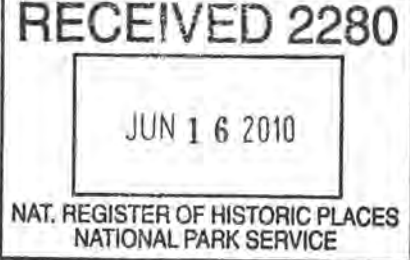
HIGHWAYS AND ROADS

Interstate	Primary highway
U. S.	Secondary highway
State	Light-duty road
County	Composition: Unspecified...
National Forest, suitable for passenger cars	Paved
National Forest, suitable for high clearance vehicles	Gravel
National Forest Trail	Dirt
	Unimproved; 4 wheel drive
	Trail
	Gate; Barrier

BRISTOL, TN-VA
2003
36082-E2-TF-024
NGA 4557 II SW-SERIES V841

Fairmount Neighborhood
Historic District
017 395135
4049377
017 395837
4049 4049608
017 395586
4050234
017 394744
4050353





TENNESSEE HISTORICAL COMMISSION
DEPARTMENT OF ENVIRONMENT AND CONSERVATION
2941 LEBANON ROAD
NASHVILLE, TN 37243-0442
(615) 532-1550

June 10, 2010

Carol Shull
Keeper of the National Register
National Park Service
National Register Branch
1201 Eye Street NW
8th floor
Washington, DC 20005

Dear Ms. Shull:

Please find the enclosed documentation to nominate the *Fairmount Neighborhood Historic District* to the National Register of Historic Places.

If you have any questions or if more information is needed, contact Brian Beadles at 615/532-1550, extension 125 or Brian.Beadles@tn.gov.

Sincerely,

E. Patrick McIntyre, Jr.
State Historic Preservation Officer

Enclosures