

United States Department of the Interior  
National Park Service

## National Register of Historic Places Continuation Sheet

\_\_\_\_\_  
Name of Property

\_\_\_\_\_  
County and State

Section number \_\_\_\_\_ Page \_\_\_\_\_

\_\_\_\_\_  
Name of multiple property listing (if applicable)

### SUPPLEMENTARY LISTING RECORD

NRIS Reference Number: 15000832

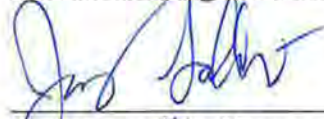
Date Listed: 11/20/2015

Property Name: English Mountain Fire Lookout Tower (Tennessee Division of Forestry Lookout Towers, 1933-1975 MPS)

County: Cocke

State: TN

-----  
This property is listed in the National Register of Historic Places in accordance with the attached nomination documentation subject to the following exceptions, exclusions, or amendments, notwithstanding the National Park Service certification included in the nomination documentation.

  
\_\_\_\_\_  
Signature of the Keeper  
Fu

11-20-2015  
\_\_\_\_\_  
Date of Action

-----  
Amended Items in Nomination:

#### Section 3 and 8: Level of Significance

The Level of Significance is hereby amended to LOCAL. The program had a statewide impact, but the importance of this tower is local.

#### Section 5: Resource Count

The resource count is hereby amended to match the narrative description:

4 C Buildings	1 NC Building
1 C Structure	2 NC Structures

\_\_\_\_\_  
The Tennessee State Historic Preservation Office was notified of this amendment.

#### **DISTRIBUTION:**

**National Register property file**  
**Nominating Authority (without nomination attachment)**

RECEIVED 2280

OCT -9 2015

United States Department of the Interior  
National Park Service

National Register of Historic Places Registration Form

Nat. Register of Historic Places  
National Park Service

This form is for use in nominating or requesting determinations for individual properties and districts. See instructions in National Register Bulletin, *How to Complete the National Register of Historic Places Registration Form*. If any item does not apply to the property being documented, enter "N/A" for "not applicable." For functions, architectural classification, materials, and areas of significance, enter only categories and subcategories from the instructions.

1. Name of Property

Historic name English Mountain Fire Lookout Tower  
Other names/site number N/A  
Name of related multiple property listing Tennessee Division of Forestry Fire Lookout Towers, 1933-1975  
(Enter "N/A" if property is not part of a multiple property listing)

2. Location

Street & Number: Carson Springs Road  
City or town: Chestnut Hill State: Tennessee County: Cocke (029)  
Not For Publication:  N/A Vicinity:  N/A Zip Code: 37821

3. State/Federal Agency Certification

As the designated authority under the National Historic Preservation Act, as amended,  
I hereby certify that this  nomination  request for determination of eligibility meets the documentation standards for registering properties in the National Register of Historic Places and meets the procedural and professional requirements set forth in 36 CFR Part 60.

In my opinion, the property  meets  does not meet the National Register Criteria. I recommend that this property be considered significant at the following level(s) of significance:

national  statewide  local

Applicable National Register Criteria:  A  B  C  D

[Signature] 10/2/15  
Signature of certifying official/Title: Deputy State Historic Preservation Officer, Tennessee Historical Commission  
Date  
State or Federal agency/bureau or Tribal Government

In my opinion, the property  meets  does not meet the National Register criteria.

\_\_\_\_\_  
Signature of Commenting Official: Date  
\_\_\_\_\_  
Title: State of Federal agency/bureau or Tribal Government

English Mountain Fire Lookout Tower  
 Name of Property

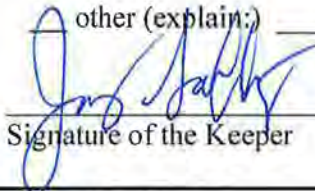
Cocke County, Tennessee  
 County and State

**4. National Park Service Certification**

I hereby certify that this property is:

- entered in the National Register
- determined eligible for the National Register
- determined not eligible for the National Register
- removed from the National Register

other (explain): \_\_\_\_\_

  
 Signature of the Keeper

11-20-2015  
 Date of Action

**5. Classification**

**Ownership of Property**

(Check as many boxes as apply.)

- Private
- Public – Local
- Public – State
- Public – Federal

**Category of Property**

(Check only **one** box.)

- Building(s)
- District
- Site
- Structure
- Object

**Number of Resources within Property**

(Do not include previously listed resources in the count)

Contributing	Noncontributing	
5	0	buildings
0	0	sites
0	3	structures
0	0	objects
5	3	Total

Number of contributing resources previously listed in the National Register 0

English Mountain Fire Lookout Tower  
Name of Property

Coke County, Tennessee  
County and State

---

**6. Function or Use**

---

**Historic Functions**

(Enter categories from instructions)

OTHER/Fire Lookout

**Current Functions**

(Enter categories from instructions)

OTHER/Fire Lookout (emergency)

VACANT/Not In Use

---

**7. Description**

---

**Architectural Classification**

(Enter categories from instructions.)

OTHER/Standard Plan Aermotor MC-39

OTHER/No Style

**Materials:** (enter categories from instructions.)

Principal exterior materials of the property: CONCRETE; METAL:Steel; WOOD ; GLASS

**Narrative Description**

The English Mountain Fire Lookout Tower is located in Coke County in East Tennessee. The 60-foot-tall tower provided a high, sheltered location for fire observation. This task was facilitated by the tower's square cab and unbroken band of windows across each elevation, an arrangement that permitted a 360° panoramic view of the surrounding terrain. While the fire tower has experienced normal wear and tear, it is in overall good condition. The nominated property includes the contributing fire tower, four contributing buildings, one non-contributing building and two non-contributing modern radio towers.

**English Mountain Fire Tower, 1934 (C)**

The English Mountain Fire Lookout Tower was constructed in 1934 by the Civilian Conservation Corps (CCC) (Kirksey 2014). Situated on an east-west axis at an elevation of 3,629 feet, the tower is constructed of galvanized steel members with bolted connections, and bears the marker of the Carnegie Steel Company. The Pittsburgh-based manufacture was a major steel producer in the early 20<sup>th</sup> century America. The four-sided, truss frame tower is sixty feet in height and topped by an enclosed seven-foot by seven-foot square cab (Kirksey 2014). The structure is supported on four legs secured to concrete footers.<sup>1</sup> Steel X-bracing is affixed to the structural frame at each of the tower's six levels, spanning the distance between every level of

---

<sup>1</sup> The measurements of the base is currently unknown; however other similar 60-ft. towers have had 16 x 16 foot base dimensions.

English Mountain Fire Lookout Tower  
Name of Property

Cocke County, Tennessee  
County and State

the tower with diagonal support members on each face. The lower portion of each section of X-bracing is further reinforced by T-bracing, which traverses the distance between each leg and is bisected by a single steel member at center. Additional steel bracing is installed at the juncture of each level of the tower. Oriented on a horizontal plane, the bracing extends from each of the staircase's five landings to the opposing section of the tower, thereby forming a rectangular figure. The tower is surrounded by a chain link metal fence. The tower tapers in width from the base to its apex and is ascended via an open steel staircase with metal handrails. A series of six stringers with wood treads rise diagonally across the interior of the tower to triangular wood plank landings. The first landing is located at the northeast corner of the tower. The second landing is located at the next level of the structure at the southwest corner. This alternating, dogleg pattern continues through five wood plank landings, with the sixth staircase reaching the apex of the tower, which is accessed via a trapdoor at the base of the square observation room.

The observation room or cab is steel-framed, clad with sheet metal siding, and topped with a hipped metal roof. The observation room's trapdoor was locked at the time of survey, and the interior of the cab was inaccessible. Each elevation contains two, nine-light, pivot windows constructed of metal and glass. Many of the glass panes are missing from the windows. The windows are oriented side-by-side and encompass the entirety of the width of each elevation, thereby forming an unobstructed 360° view of the surrounding terrain. While no manufacturer's mark was located on the tower, stylistic evidence indicates that it is likely an Aermotor MC-39 type. Based in Chicago, Illinois, the Aermotor Company was the premier manufacturer of steel fire towers in the early twentieth century. A successful windmill maker, Aermotor re-tooled their existing designs into fire lookout towers, which were typically topped with a small, seven-foot by seven-foot square cab (Grosvenor 1999:96).

#### **Storage Shed, ca. 1960 (C)**

Situated at the base of the fire lookout tower is a storage shed which was constructed ca. 1960. The one-story, six-foot by six-foot building features a continuous poured concrete foundation, an exterior comprised of corrugated metal, and a flat roof capped with corrugated metal. A single door on the south elevation provides access to the building. This building most likely housed a generator before electricity was brought to the fire lookout tower (*see Figure 7*).

#### **Modern Communications Towers, ca. 1980, ca. 2010 (NC-2)**

Situated approximately 110 feet southwest of the fire lookout tower are two radio/cellular communications towers. One tower was constructed ca. 1980 and replaced any earlier tower used for radio communications by the fire tower, while the other was constructed ca. 2010. The cantilevered structures are constructed of steel and feature a lattice of triangular cross-sections. The towers taper in height from base to apex. The towers and the radio equipment building are surrounded by a chain link metal fence.

#### **Radio Equipment Building, ca. 1950 (C)**

Located within the chain link metal fence enclosure with the two modern communications towers is a fifteen-foot by thirteen-foot radio equipment building, which was constructed ca. 1950. This one-story, rectangular plan building is composed of concrete blocks, and is capped by a flat metal roof. A door on the west elevation provides access to the building (*see Figure 6*).

English Mountain Fire Lookout Tower  
Name of Property

Coke County, Tennessee  
County and State

---

**Utility Building, ca. 1960 (C)**

Situated approximately sixty-five feet south of the fire lookout tower is a ten-foot by ten-foot utility building which was constructed ca. 1960. The one-story, rectangular plan, building features a continuous poured concrete foundation, an exterior comprised of galvanized steel sheeting, and a flat roof capped with corrugated metal. A single door on the west elevation provides access to the building (*See Figure 4*).

**Communications Tower Utility Building, ca. 1960 (C)**

Located within a chain link metal fence enclosure approximately eighty-feet southwest of the fire lookout tower is the communications tower utility building which was constructed ca. 1960. This building was set directly adjacent to and on the north side of the lookout operator's cabin and previously served as the cabin's generator house (*see Figures 4 & 5*). This one-story, fifteen-feet by thirteen-foot building is composed of concrete blocks, and features a side-gable roof covered with asphalt shingles.

**Storage No. 2, ca. 1960 (NC)**

A ca. 1960 storage shed located west of the lookout tower is a one-story, eight-foot by eight-foot frame building that is clad with wood board and batten siding. The building is capped by a shed roof covered with corrugated metal. A single door on the south elevation provides access to the building (*see Figure 6*).

English Mountain Fire Lookout Tower  
Name of Property

Coke County, Tennessee  
County and State

**8. Statement of Significance**

**Applicable National Register Criteria**  
(Mark "x" in one or more boxes for the criteria qualifying the property for National Register listing.)

**Areas of Significance**  
(Enter categories from instructions.)

ARCHITECTURE

CONSERVATION

\_\_\_\_\_  
\_\_\_\_\_  
\_\_\_\_\_

**Period of Significance**

1934-1965

\_\_\_\_\_

**Significant Dates**

1934

\_\_\_\_\_  
\_\_\_\_\_

**Significant Person**

(Complete only if Criterion B is marked above.)

N/A

\_\_\_\_\_

**Cultural Affiliation**

N/A

\_\_\_\_\_

**Architect/Builder**

CIVILIAN CONSERVATION CORPS  
(CCC)

\_\_\_\_\_

\_\_\_\_\_

- A Property is associated with events that have made a significant contribution to the broad patterns of our history.
- B Property is associated with the lives of persons significant in our past.
- C Property embodies the distinctive characteristics of a type, period, or method of construction or represents the work of a master, or possesses high artistic values, or represents a significant and distinguishable entity whose components lack individual distinction.
- D Property has yielded, or is likely to yield, information important in prehistory or history.

**Criteria Considerations N/A**  
(Mark "x" in all the boxes that apply.)

Property is:

- A Owned by a religious institution or used for religious purposes.
- B removed from its original location.
- C a birthplace or grave.
- D a cemetery.
- E a reconstructed building, object, or structure.
- F a commemorative property.
- G less than 50 years old or achieving significance within the past 50 years.

English Mountain Fire Lookout Tower  
Name of Property

Cocke County, Tennessee  
County and State

---

**Statement of Significance Summary Paragraph**

The English Mountain Fire Lookout Tower is eligible for listing on the National Register of Historic Places (NRHP) as part of the "Tennessee Division of Forestry Fire Lookout Towers, 1933-1975" Multiple Property Document under National Register Criterion A in the area of Conservation as a reflection of changing conceptions regarding forest management and fire control in the twentieth century. Additionally, the tower is eligible for the NRHP under National Register Criterion C in the area of Architecture as a good example of an Aermotor MC-39 fire lookout tower. The tower retains its original design features, and its historic setting has been mostly preserved except for the intrusion of a modern cell tower. The tower was constructed as part of the Tennessee Division of Forestry's (TDF) statewide efforts to protect forested land in the state through its fire control program. The period of significance begins in 1934 when the tower was constructed by the Civilian Conservation Corps (CCC). The CCC was responsible for the construction and operation of the majority of the fire lookout towers built in the early twentieth century in Tennessee. The period of significance terminates in 1965, when Tennessee fire lookout towers were largely abandoned in favor of other methods of fire identification.

**Narrative Statement of Significance**

Located in Cocke County, Tennessee, the English Mountain Fire Lookout Tower was constructed in 1934 by the Civilian Conservation Corps (CCC) (Kirksey 2014). While very little historical information is available regarding the English Mountain fire lookout tower in particular, it is known that the State of Tennessee Forestry Service entered into a contract with England, Walton, and Co., Inc. in September 1933, which allowed the construction, use, and maintenance of a fire lookout tower on the property. The contract allowed the State to use the property for fire detection, gave the State the right of ingress and egress, and the right to construct a telephone line to the lookout tower (Cocke County Register of Deeds Book W, Vol. 55: 111). In the event of the State's abandonment of the property, the land title will revert to its original owners, and all structures and appurtenances will remain the property of the State. Additional easements allowed the State a right of way up the mountain to the tower.

The lookout tower is significant under National Register Criterion A in the area of Conservation as a reflection of changing conceptions regarding forest management and fire control in the twentieth century. Tennessee, along with many other states, benefited from the early shift in public policy allowing for improvement in fire detection as a result of the conservation movement that led to the construction and staffing of fire towers. The TDF relied heavily on CCC labor, and the CCC was responsible for the construction and operation of many of Tennessee's fire lookout towers built in the 1930s. While it is unknown exactly which CCC group constructed the English Mountain Fire Lookout Tower, two CCC camps were located in Cocke County: Company 1213 and Company 1462. It is likely that the TDF drew from these camps for workmen.

In Region 8 or the Southern Region of the United States Forest Service and particularly in the State of Tennessee, with large areas of difficult-to-access mountain terrain and thick forest canopy, fire towers have served as a particularly important fire management tool. In an article written by Iliff R. McMahan for the Newport Plain Talk (date unknown, see Figure 8), John Crawford McNabb, Fire Control Assistant in charge of the English Mountain Unit had this to say regarding his unit and their duties,



English Mountain Fire Lookout Tower  
Name of Property

Cocke County, Tennessee  
County and State

...From the towers we can survey all that we are charged with and in case of fire we have four crews of six men each that we can have on the scene and in action in about two hours...We have the four crews that get paid for six months, but must fight fire or work for one hundred hours. If we have no fires then the crews work on the trails, camps and towers. In this manner we can keep up and improve our trails, making it easier for the people who like to hike and use the mountain ways. In the not too far future we hope to have the mountains easily accessible to scouts, campers, hikers and hunters, so the more effort the people make to keep down fire then the more we can spend on making things more pleasant for them on their outings.

At its peak, the state had 208 lookout towers of which 142 are extant as of March 26, 2014 (University of Tennessee-Knoxville 2014). The lookout tower is a prominent symbol of the history of fire management and a key component of the conservation movement. From its establishment, the Forestry Service played a significant role in shaping national fire control policies as well as in the development of state-level fire prevention systems. The English Mountain Fire Lookout Tower is a visual reminder of this multi-agency, federal and state-level governmental cooperation for the benefit of forest land in Tennessee.

The English Mountain Fire Lookout Tower is significant under National Register Criterion C in the area of Architecture as an excellent example of an Aermotor MC-39 observation-only fire lookout tower. The MC-39 design was one of the most popular steel designs by the Aermotor Company of Chicago, Illinois (Forest Fire Lookout Association; Starr). The tower design was based on standardized plans adapted from Aermotor windmills (Steere 1987). The type is characterized by a seven-foot by seven-foot steel cab, an internal stairway that doglegs from corner to corner. Each run of stairs terminates at a triangular landing. This type was available in a number of heights, ranging from thirty-three feet to as tall as 176 feet (Forest Fire Lookout Association n.d.). This type is very similar to an International Derrick Tower model from 1933, which was designed by Aermotor and the U.S. Forest Service. The International Derrick Towers often had issues with swaying staircases, however, and were unpopular (Forest Fire Lookout Association; Starr). While no schematics were located for the MC-39, schematics are available for the nearly-identical International Derrick 1933 model, and are located in the additional documentation section. The Aermotor MC-39 improved upon the International Derrick 1933 design, and the English Mountain Fire Lookout Tower represents an important stage in the evolution of lookout tower architecture.

The English Mountain Fire Lookout Tower retains its original design and a high level of its original fabric, and therefore maintains integrity. The historic setting has been compromised by the construction of two modern radio towers, but no additional development has taken place in the area. Additionally, a ca. 1934 lookout operator's cabin visible in a ca. 1948 photograph is no longer extant (*see Figure 1*). It was replaced in 1960 with another four-foot by six-foot cabin which was removed sometime after 1985 (*see Figures 2, 3 & 4*). Until the 1970s, the tower was used during high-fire season for fire detection, and was constantly manned. Since the mid-1970s, however, when forestry employees became more dependent on fire-spotting planes and fire reports from 911 emergency calls, the tower is no longer used for observance, but is occasionally ascended by forestry staff for maintenance checks. The tower was listed on the National Historic Lookouts Register on March 14, 2014 with a registry number of US 993, TN 13.

English Mountain Fire Lookout Tower  
Name of Property

Coke County, Tennessee  
County and State

---

For additional information, please refer to the Multiple Property Documentation Form "Tennessee Division of Forestry Fire Lookout Towers, 1933-1975".

English Mountain Fire Lookout Tower  
Name of Property

Coke County, Tennessee  
County and State

---

## 9. Major Bibliographic References

---

### Bibliography

Coke County Register of Deeds

1934 England, Walton & Co., Inc. to State of Tennessee Forestry Service. Deed Book W, Vol. 55, p. 111.

Forest Fire Lookout Association

n.d. Fire Lookout Types. Electronic document, <http://www.firelookout.org/fire-lookout-types.html>, accessed June 5, 2014.

Grosvenor, John R. and United States Forest Service.

1999 *A History of the Architecture of the USDA Forest Service*. Engineering Staff, United States Department of Agriculture Forest Service.

Kirksey, John

2014 Personal communication. John Kirksey, Fire Management Unit Leader, Tennessee Division of Forestry.

McMahan, Iliff R.

n.d. "It Sez Here". Newport Plain Talk.

Starr, Bill

2011 *The Five Various Steel Fire Tower Models Utilized in New York State*. Electronic document, [http://nhlr.org/NY\\_Towers/New\\_York\\_Steel\\_Fire\\_Tower\\_Models\\_by\\_Bill\\_Starr.pdf](http://nhlr.org/NY_Towers/New_York_Steel_Fire_Tower_Models_by_Bill_Starr.pdf), accessed June 5, 2014.

Steere, Peter L.

1987 "National Forest Fire Lookouts in the Southwestern Region, USDA Forest Service." National Register of Historic Places nomination, on file at the Kaibab National Forest.

University of Tennessee-Knoxville

2013 Tennessee Lookout Towers. Electronic Compiled Source Website. <http://web.eecs.utk.edu/~dunigan/towers/>. Accessed June 2, 2014.

Refer to the Multiple Property Documentation Form "Tennessee Division of Forestry Fire Lookout Towers, 1933-1975" for additional related sources.

English Mountain Fire Lookout Tower  
 Name of Property

Coke County, Tennessee  
 County and State

<b>Previous documentation on file (NPS):</b>		<b>Primary location of additional data:</b>	
<input checked="" type="checkbox"/>	preliminary determination of individual listing (36 CFR 67 has been requested)	<input checked="" type="checkbox"/>	State Historic Preservation Office
<input checked="" type="checkbox"/>	previously listed in the National Register	<input checked="" type="checkbox"/>	Other State agency
<input checked="" type="checkbox"/>	previously determined eligible by the National Register	<input checked="" type="checkbox"/>	Federal agency
<input type="checkbox"/>	designated a National Historic Landmark	<input type="checkbox"/>	Local government
<input type="checkbox"/>	recorded by Historic American Buildings Survey #	<input type="checkbox"/>	University
<input type="checkbox"/>	recorded by Historic American Engineering Record #	<input type="checkbox"/>	Other
<input type="checkbox"/>	recorded by Historic American Landscape Survey #	Name of repository: USDA Forest Service; Tennessee Forestry Division	
Historic Resources Survey Number (if assigned):			

English Mountain Fire Lookout Tower  
Name of Property

Coke County, Tennessee  
County and State

---

**10. Geographical Data**

---

**Acreage of Property** 1 acre **USGS Quadrangle** Chestnut Hill 164 NE

**Latitude/Longitude Coordinates**

Datum if other than WGS84:

Latitude: 35.901076

Longitude: -83.297982

**Verbal Boundary Description**

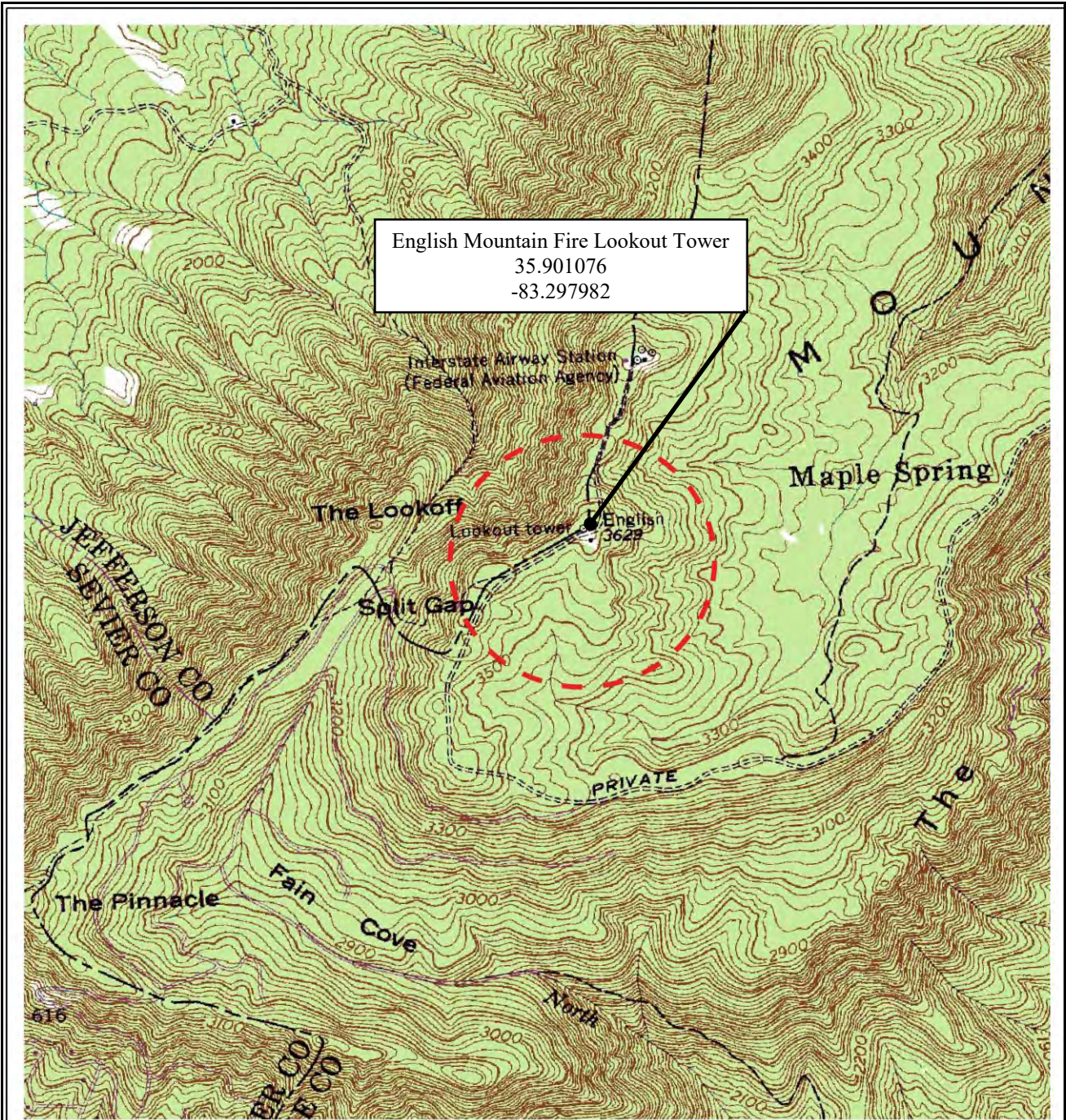
The proposed boundary of the English Mountain Fire Lookout Tower property follows the boundary of Coke County Parcel 072 002.02, and is shown on the accompanying Tennessee tax map entitled "English Mountain Fire Lookout Tower Boundary". The National Register boundary includes one contributing fire tower, four contributing buildings, one non-contributing building and two non-contributing modern radio towers.

**Boundary Justification**

The National Register boundary for the English Mountain Fire Lookout Tower property includes those buildings and structures that are historically associated with the fire observation complex during its period of significance (1934-1965) and retain adequate integrity.

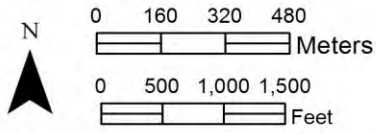
English Mountain Fire Lookout Tower  
Name of Property

Cocke County, Tennessee  
County and State



Location of English Mountain Fire Lookout Tower

 Fire lookout tower location

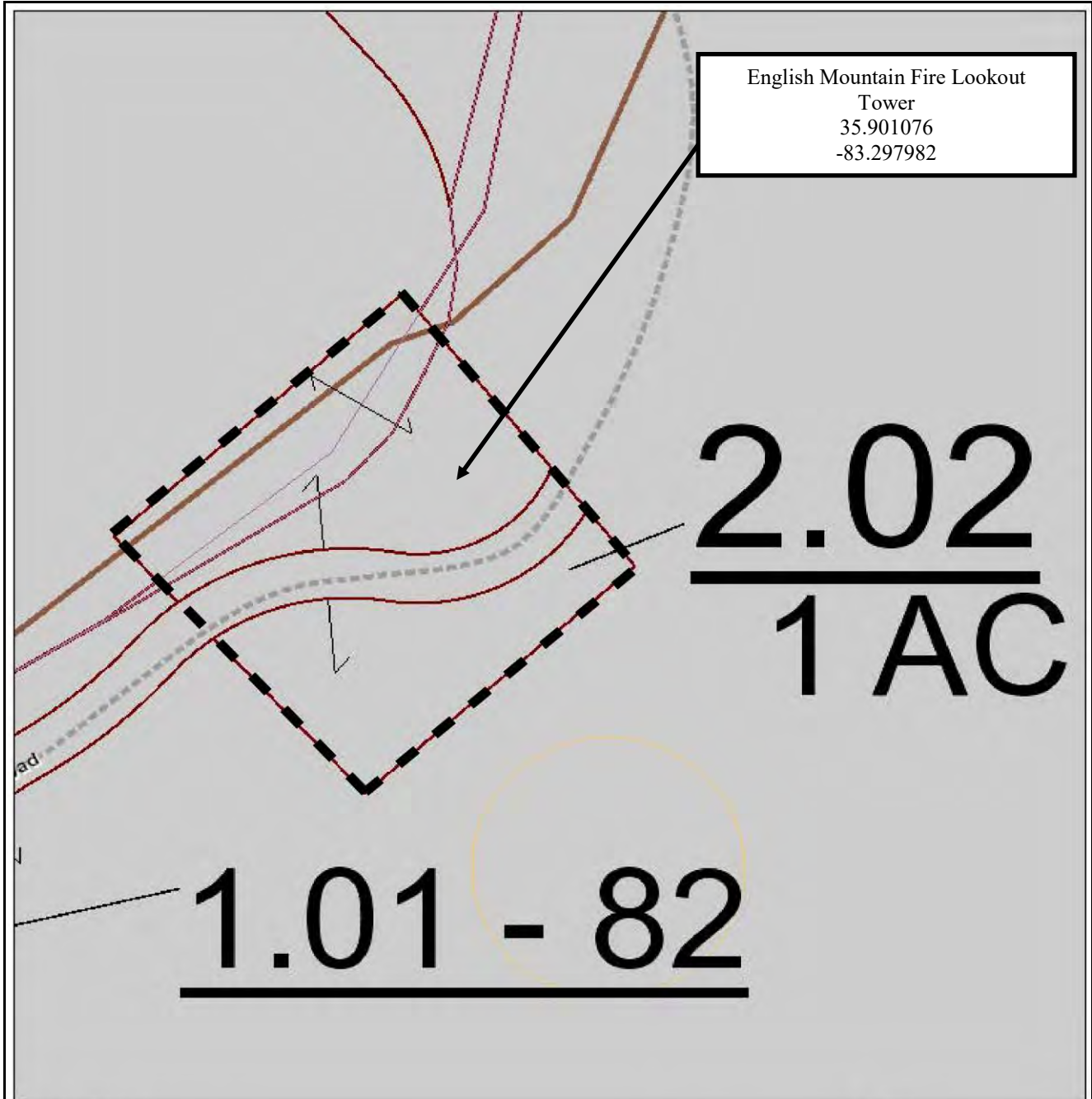


Located on USGS 1980 Chestnut Hill 7.5-minute topographic quadrangle.

English Mountain Fire Lookout Tower  
Name of Property

Coke County, Tennessee  
County and State

**English Mountain Fire Lookout Tower Boundary**

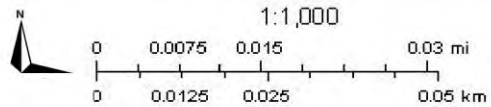


April 14, 2014

Coke County, TN Tax Map



Proposed NRHP Boundary

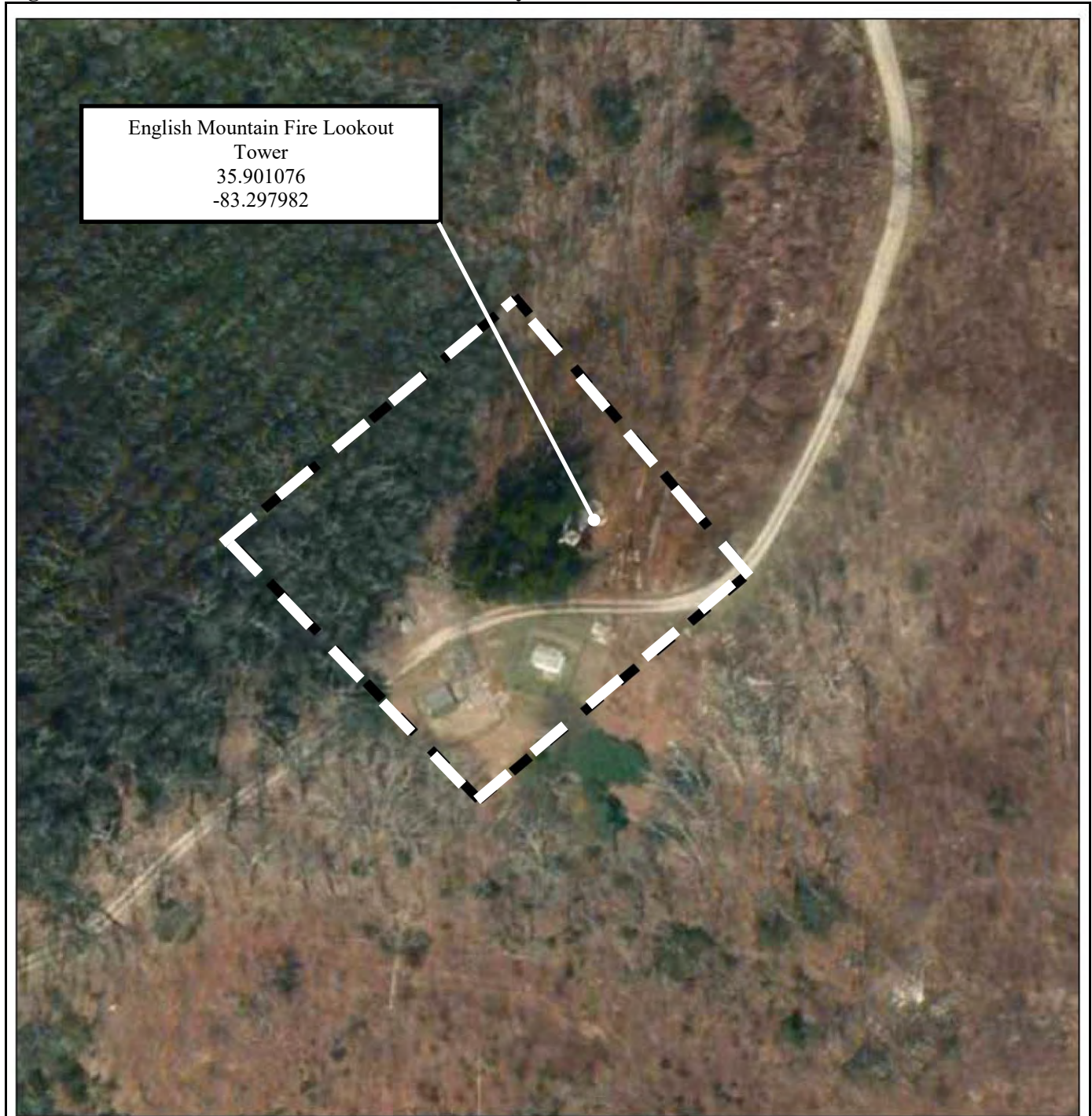


OIR-GIS Services

English Mountain Fire Lookout Tower  
Name of Property

Cocke County, Tennessee  
County and State

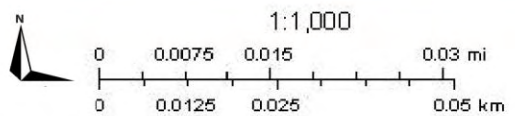
**English Mountain Fire Lookout Tower Boundary**



April 14, 2014

Cocke County, TN Tax Map

 Proposed NRHP Boundary





English Mountain Fire Lookout Tower  
Name of Property

Cocke County, Tennessee  
County and State

**11. Form Prepared By**

Name Sr. Preservation Planner Ted Karpyne, Preservation Planner Meghan Weaver, and  
Historian David Sprouse; Peggy Nickell: Tennessee Historical Commission

Organization Tennessee Valley Archaeology Research

Street & Number 4219 Hillsboro Pike, Suite 201 Date June 2, 2014

City or Town Nashville Telephone 615-760-5693

E-mail mweaver@tvaresearch.com State TN Zip Code 37215

**Additional Documentation**

Submit the following items with the completed form:

- **Maps:** A USGS map or equivalent (7.5 or 15 minute series) indicating the property's location.
- **Sketch map** for historic districts and properties having large acreage or numerous resources. Key all photographs to map.
- **Photographs** (refer to Tennessee Historical Commission National Register *Photo Policy* for submittal of digital images and prints)
- **Additional items:** (additional supporting documentation including historic photographs, historic maps, etc. should be included on a Continuation Sheet following the photographic log and sketch maps)

**Paperwork Reduction Act Statement:** This information is being collected for applications to the National Register of Historic Places to nominate properties for listing or determine eligibility for listing, to list properties, and to amend existing listings. Response to this request is required to obtain a benefit in accordance with the National Historic Preservation Act, as amended (16 U.S.C.460 et seq.).  
**Estimated Burden Statement:** Public reporting burden for this form is estimated to average 100 hours per response including time for reviewing instructions, gathering and maintaining data, and completing and reviewing the form. Direct comments regarding this burden estimate or any aspect of this form to the Office of Planning and Performance Management, U.S. Dept. of the Interior, 1849 C. Street, NW, Washington, DC.

English Mountain Fire Lookout Tower  
Name of Property

Cocke County, Tennessee  
County and State

---

**Photo Log**

Name of Property: English Mountain Fire Lookout Tower  
City or Vicinity: Chestnut Hill  
County: Cocke State: Tennessee  
Photographer: Meghan Weaver, Tennessee Valley Archaeological Research, Nashville, TN  
Date Photographed: December 19, 2013

- 0001. Fire lookout tower (C) south and east elevations. Camera facing north.  
1 of 29.
- 0002. Fire lookout tower (C) north and east elevations. Camera facing west.  
2 of 29.
- 0003. Fire lookout tower (C) and modern communication towers (NC). Camera facing southwest.  
3 of 29.
- 0004. Fire lookout tower cab (C) south and east elevations. Camera facing north.  
4 of 29.
- 0005. Fire lookout tower (C) south and east elevations, looking up from base of tower.  
5 of 29.
- 0006. Storage shed (NC) east elevation. Camera facing west.  
6 of 29.
- 0007. Fire lookout tower (C) west elevation. Camera facing east.  
7 of 29.
- 0008. U.S. Coast and Geodetic Survey marker, located within tower footprint.  
8 of 29.
- 0009. Concrete foundation of unknown nonextant structure, located west of tower. Camera facing northwest.  
9 of 29.
- 0010. Storage shed (NC) south and west elevations. Camera facing northeast.  
10 of 29.
- 0011. Fire lookout tower (C) stairway detail. Camera facing west.  
11 of 29.
- 0012. Fire lookout tower (C) stairway. Camera facing west.  
12 of 29.

English Mountain Fire Lookout Tower  
Name of Property

Cocke County, Tennessee  
County and State

---

0013. Fire lookout tower (C) north elevation, looking up from base of tower.  
13 of 29.

0014. Fire lookout tower (C) north and east elevations, looking up from base of tower.  
14 of 29.

0015. Fire lookout tower (C) concrete pad and steel leg detail.  
15 of 29.

0016. Fire lookout tower (C) stamped part number.  
16 of 29.

0017. Fire lookout tower (C) concrete pad with steel leg and bracing detail.  
17 of 29.

0018. Fire lookout tower (C) concrete pad at base of stairway. Camera facing northwest.  
18 of 29.

0019. "CARNEGIE CO. USA" stamp on leg of fire lookout tower (C). Camera facing north.  
19 of 29.

0020. Fire lookout tower (C) bracing joint detail. Camera facing northwest.  
20 of 29.

0021. Fire lookout tower (C) bracing detail. Camera facing northwest.  
21 of 29.

0022. Utility building (NC) north and west elevations. Camera facing southeast.  
22 of 29.

0023. Utility building (NC) north and east elevations. Camera facing southwest.  
23 of 29.

0024. Communications tower utility building (NC) north and east elevations. Camera facing southwest.  
24 of 29.

0025. Utility building (NC) south and west elevations. Camera facing northeast.  
25 of 29.

0026. Storage shed No.2 (NC) south and east elevations. Camera facing northwest.  
26 of 29.

0027. Storage shed No.2 (NC) north and east elevations. Camera facing southwest.  
27 of 29.

English Mountain Fire Lookout Tower  
Name of Property

Cocke County, Tennessee  
County and State

---

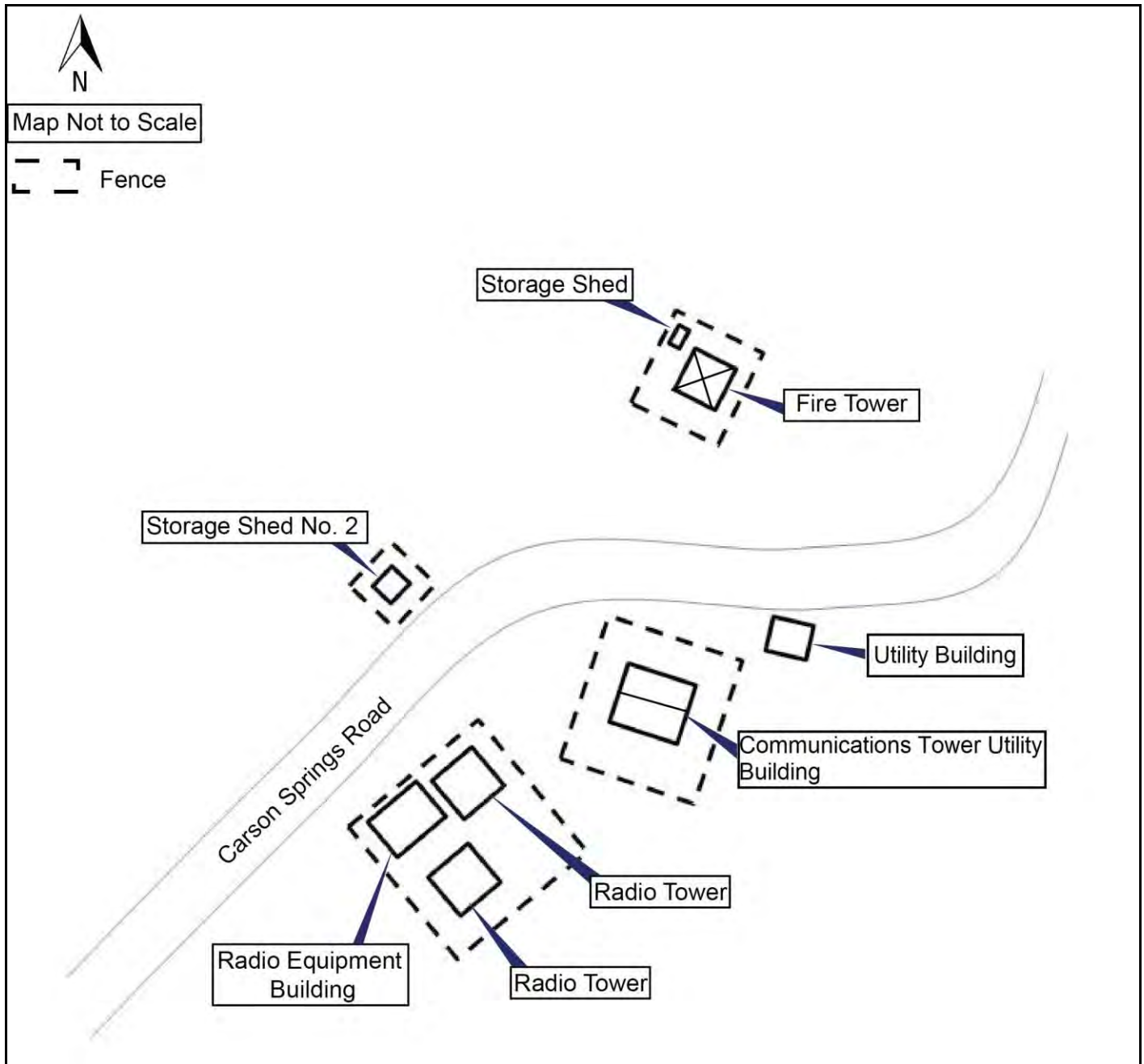
0028. Radio equipment building (NC), utility building, and base of communication towers. Camera facing northeast.  
28 of 29.

0029. Modern communication towers (NC), looking up from base.  
29 of 29.

English Mountain Fire Lookout Tower  
Name of Property

Cocke County, Tennessee  
County and State

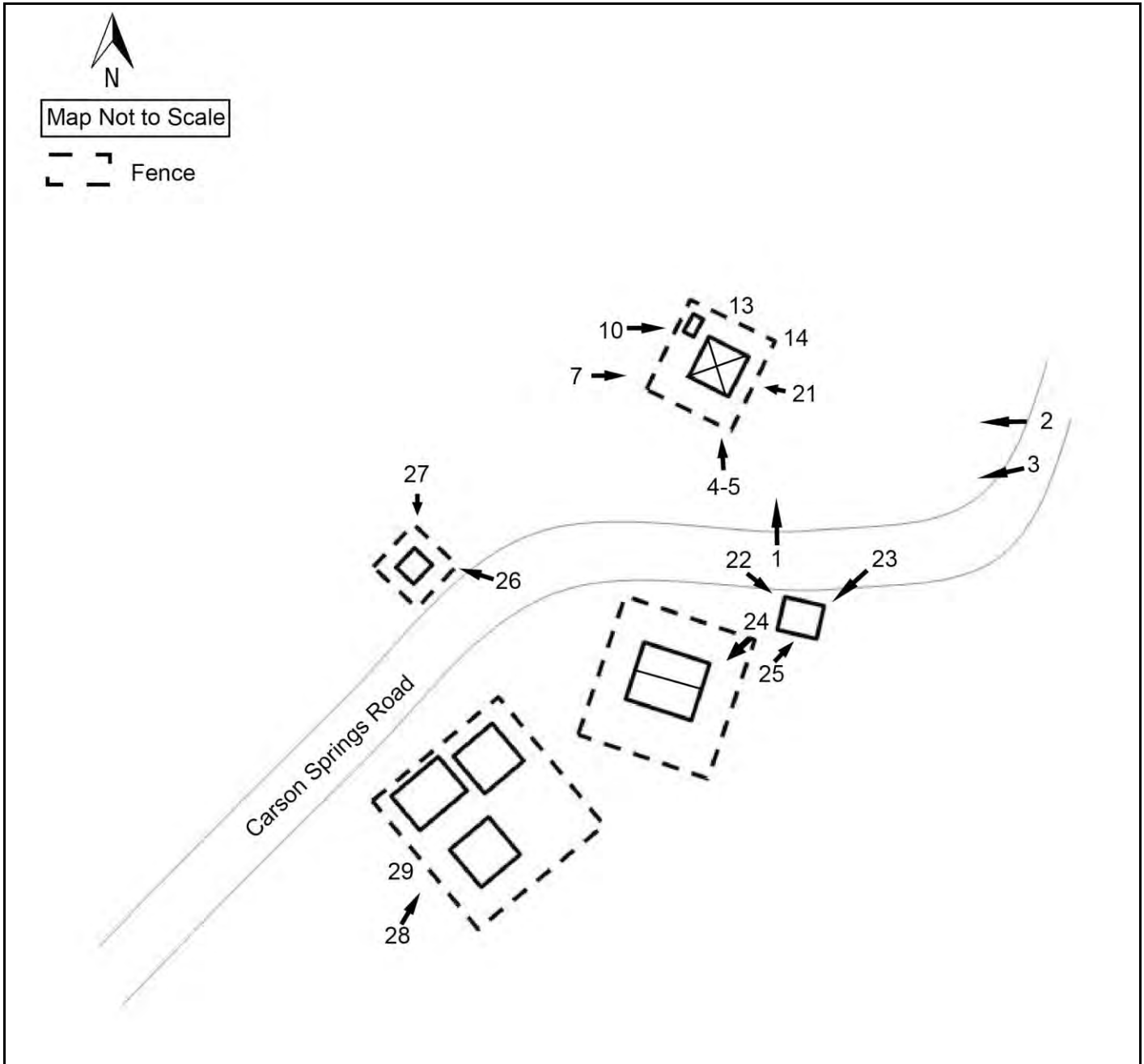
**English Mountain Fire Lookout Tower Site Plan**



English Mountain Fire Lookout Tower  
Name of Property

Coke County, Tennessee  
County and State

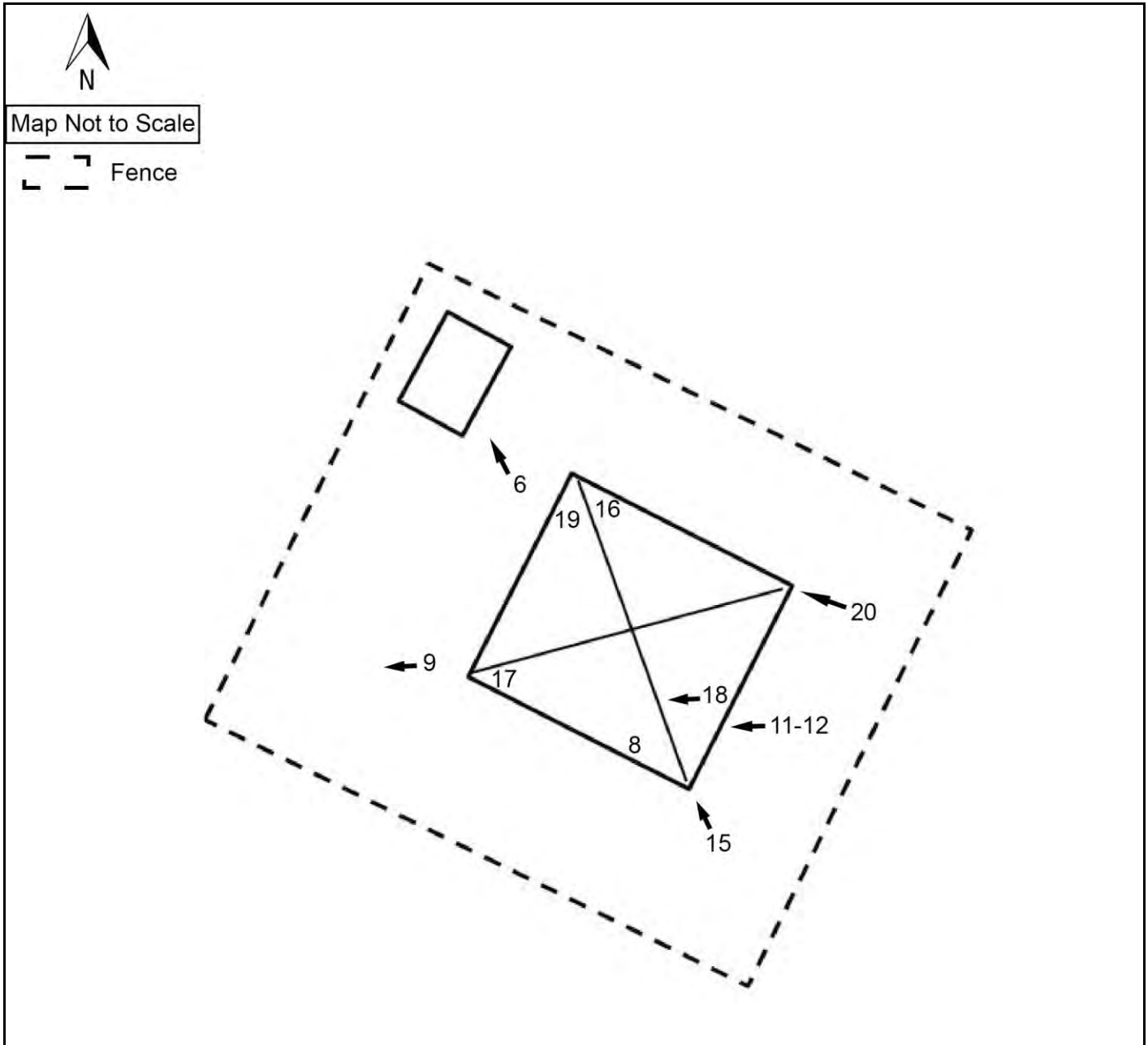
**English Mountain Fire Lookout Tower Site Plan With Photo Key**



English Mountain Fire Lookout Tower  
Name of Property

Coke County, Tennessee  
County and State

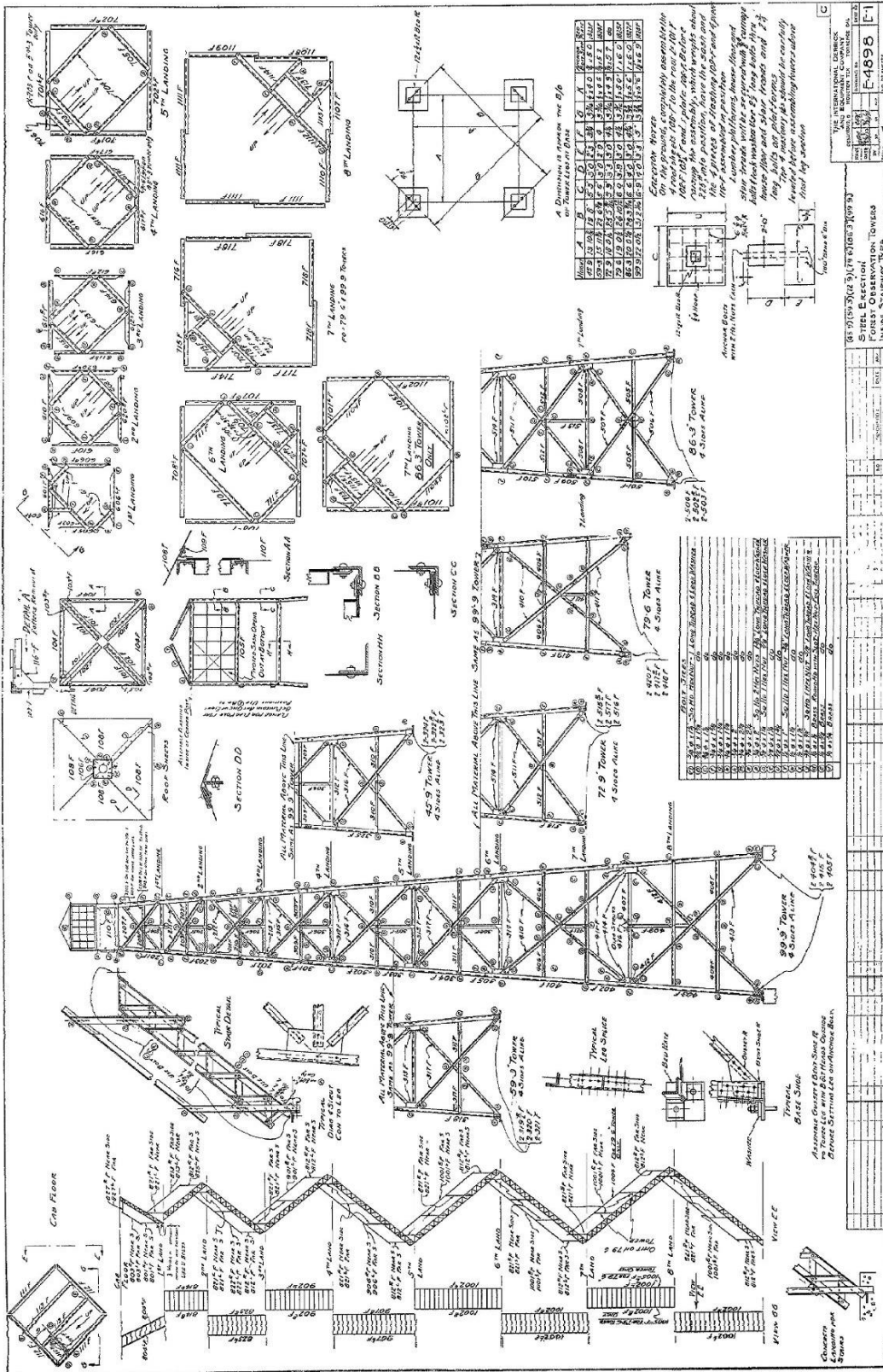
**English Mountain Fire Lookout Tower Plan with Photo Key**



English Mountain Fire Lookout Tower  
 Name of Property

Cocke County, Tennessee  
 County and State

International Derrick Model 1933

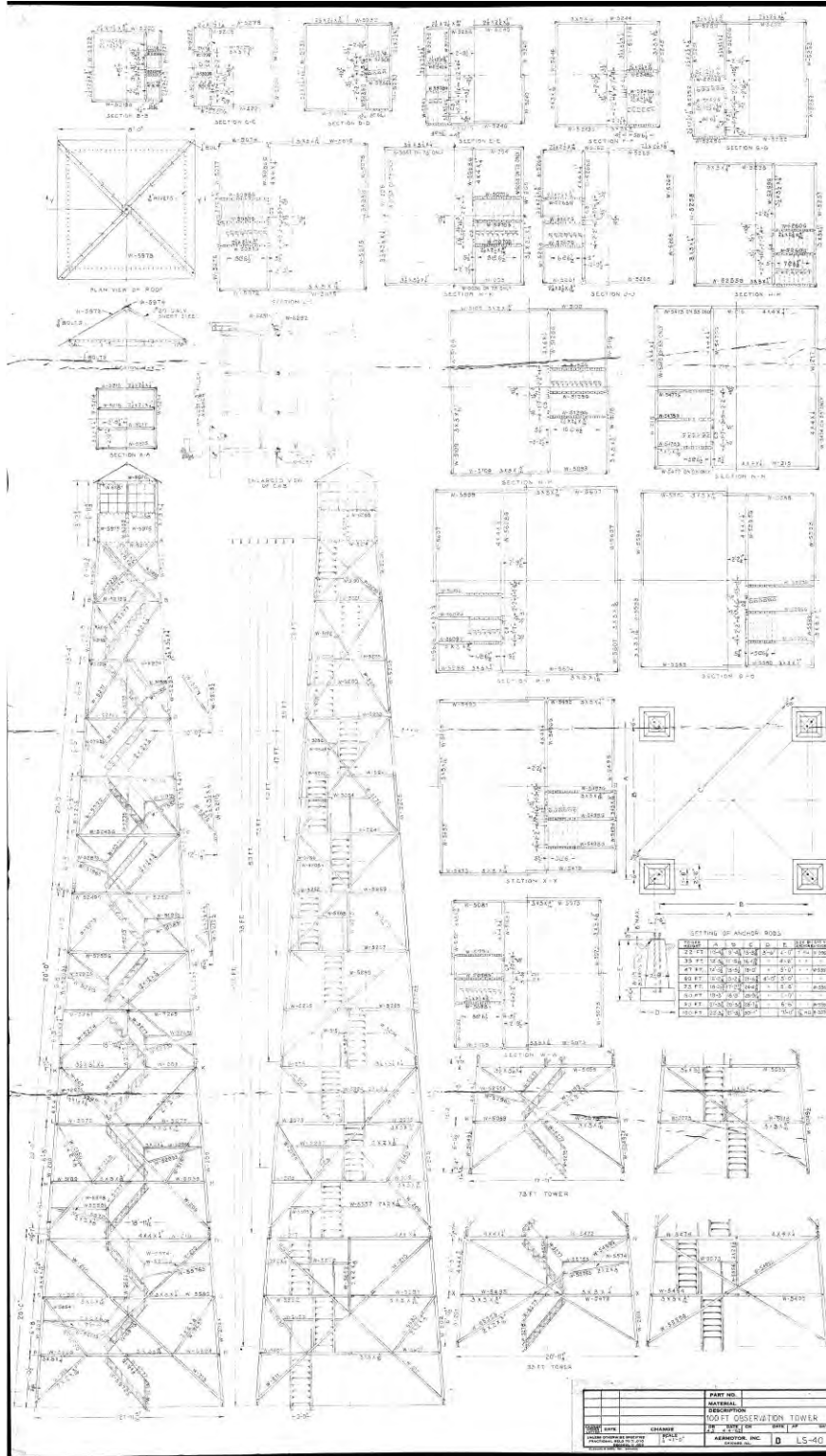




English Mountain Fire Lookout Tower  
 Name of Property

Coke County, Tennessee  
 County and State

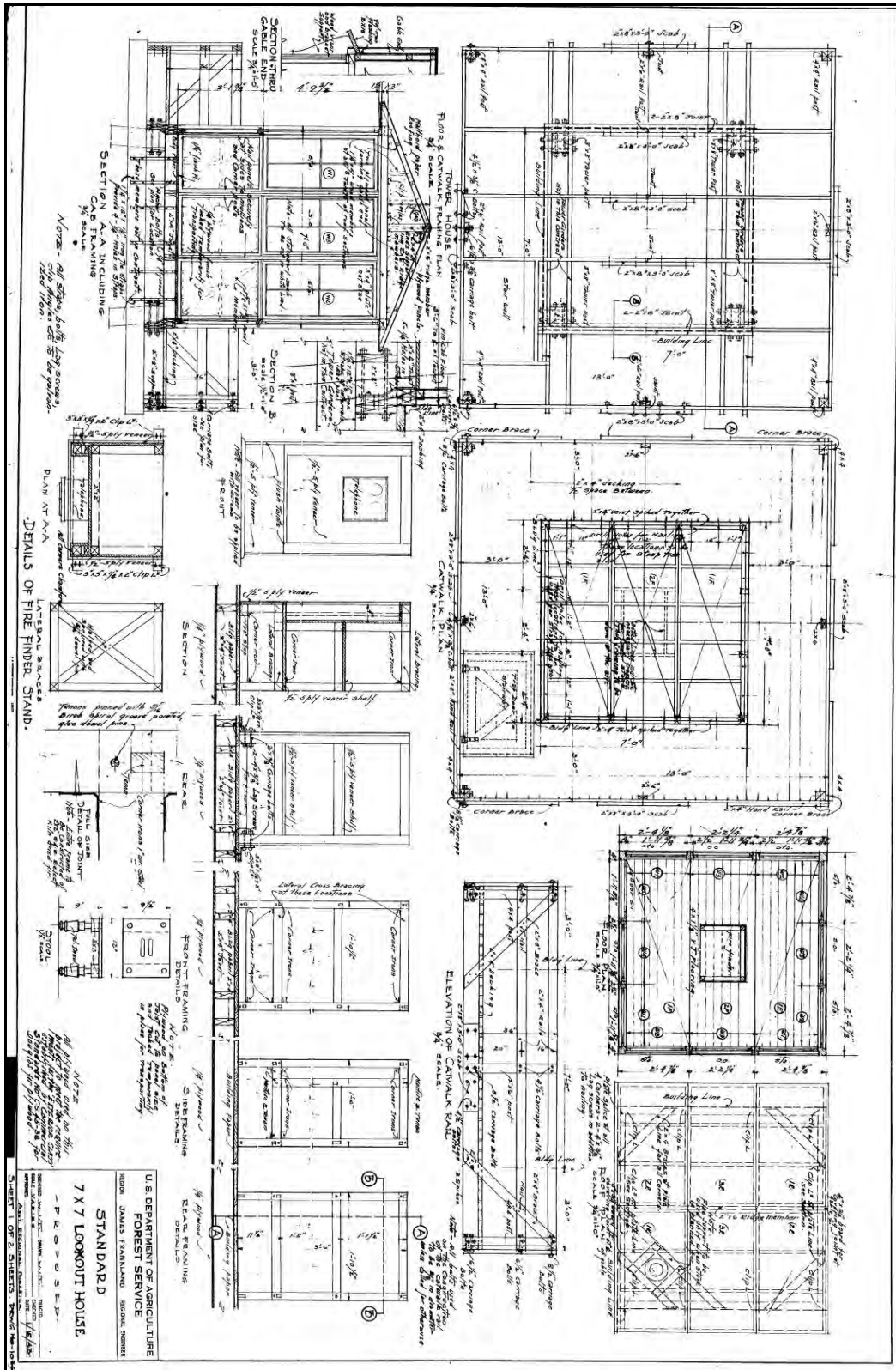
**Schematic for a 100-foot tower**



English Mountain Fire Lookout Tower  
 Name of Property

Coke County, Tennessee  
 County and State

**Aermotor Standard 7x7 Lookout House Schematic, ca. 1943 (no longer extant)**



United States Department of the Interior  
National Park Service

**National Register of Historic Places  
Continuation Sheet**

Section number 8 Page 26

English Mountain Fire Lookout Tower
----- Name of Property
Cocke County, Tennessee
----- County and State
Tennessee Division of Forestry Fire Lookout Towers, 1933-ca. 1975
----- Name of multiple listing (if applicable)



Figure 1. Aerial view of the English Mountain Fire Lookout Tower, ca. 1948. *Photo courtesy of the Tennessee State Library and Archives (TSLA).*

United States Department of the Interior  
National Park Service

**National Register of Historic Places  
Continuation Sheet**

Section number 8 Page 27

English Mountain Fire Lookout Tower
-----
Name of Property
Cocke County, Tennessee
-----
County and State
Tennessee Division of Forestry Fire
Lookout Towers, 1933-ca. 1975
-----
Name of multiple listing (if applicable)



Figure 2: Ca. 1985 photograph of the lookout operator cabin that replaced the original 1934 cabin; view to the north. *Photo courtesy of the TN Division of Forestry-East Tennessee District.*



Figure 3: Ca. 1985 photograph of the lookout operator cabin that replaced the original 1934 cabin; view is to the southeast. *Photo courtesy of the TN Division of Forestry-East Tennessee District.*

United States Department of the Interior  
National Park Service

National Register of Historic Places  
Continuation Sheet

Section number 8 Page 28

English Mountain Fire Lookout Tower

Name of Property

Cocke County, Tennessee

County and State

Tennessee Division of Forestry Fire

Lookout Towers, 1933-ca. 1975

Name of multiple listing (if applicable)



Figure 4: Ca. 1985 photograph of the lookout operator's cabin; view is to the east. *Photo courtesy of the TN Division of Forestry-East Tennessee District.*

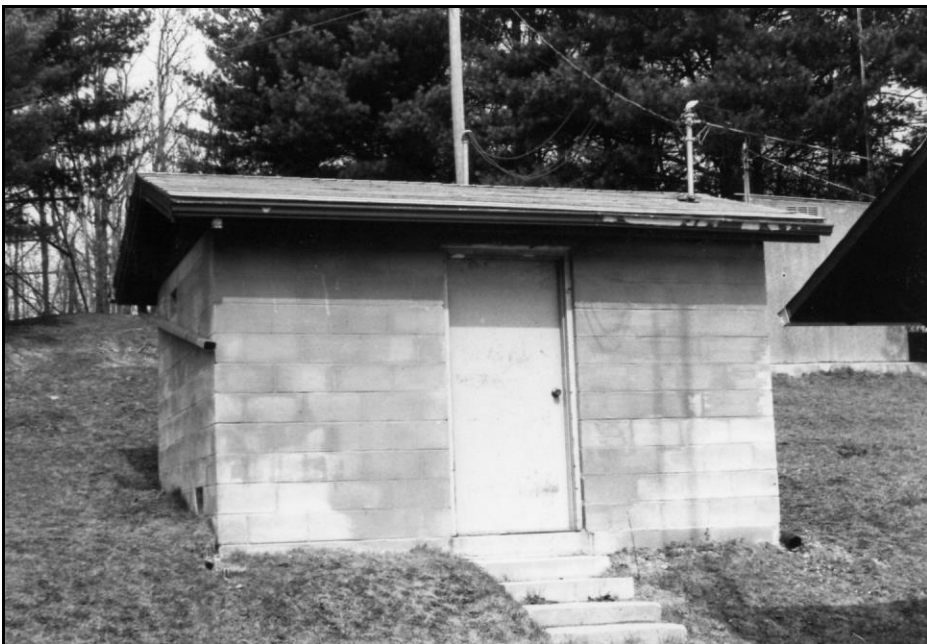


Figure 5: Ca. 1985 photograph of the generator house, now the Communications Tower Utility Building; view is to the north. *Photo courtesy of the TN Division of Forestry-East Tennessee District.*

United States Department of the Interior  
National Park Service

**National Register of Historic Places  
Continuation Sheet**

Section number 8 Page 29

English Mountain Fire Lookout Tower

Name of Property

Cocke County, Tennessee

County and State

Tennessee Division of Forestry Fire

Lookout Towers, 1933-ca. 1975

Name of multiple listing (if applicable)



Figure 6: Ca. 1985 photograph of Carson Springs Road looking towards northeast at the fire tower complex. *Photo courtesy of the TN Division of Forestry-East Tennessee District.*



Figure 7: Ca. 1985 photograph of the storage shed (original generator shed) beneath and adjacent to the fire tower; view to the northwest. *Photo courtesy of the TN Division of Forestry-East Tennessee District.*

United States Department of the Interior  
National Park Service

National Register of Historic Places  
Continuation Sheet

Section number 8 Page 30

English Mountain Fire Lookout Tower  
Name of Property  
Cocke County, Tennessee  
County and State  
Tennessee Division of Forestry Fire  
Lookout Towers, 1933-ca. 1975  
Name of multiple listing (if applicable)

**"It Sez Here"** By Iliff R. McMahan



Looking over several of the fire-fighting tools are, left to right: John McNabb, John Hatley and Bill Johnson.

John Crawford McNabb has an interesting and useful job as Fire Control Assistant in charge of the English Mountain Unit of fire control for East Tennessee. The unit has just completed their station on the Water Level Road near Edwina and from this advantageous position can survey most of English and a part of the Great Smokies with which the unit is charged to keep free from fire.

**Keeping Green**  
The unit has charge of the English Mountain and Hall's Top Tower and for the fire period of five months someone is ever on watch in these towers. Mr. McNabb said, "The fire period is from January 15 to April 15, then when things are green the fire hazards are diminished, but during the fall months when the leaves are dead and the grass dries we have another fire hazard period of from October 15 to December 15. From the towers we can survey all that we are charged with and in case of fire we have four crews of six men each that we can have on the scene and in action in about two hours.  
The unit has two other full

time employes, John Hatley and Bill Johnson, who joined in the conversation. Johnson said, "Sitting in those towers for long hours and even days at a time certainly get lonesome. The beautiful scenery and good food certainly make it more bearable." Hatley added, "The telephone is all that keeps me from jumping out of the tower. When it gets too lonesome we can call the station and talk with anyone that will lend an ear."

**Hard Job**  
The Fire Control Assistant



John C. McNabb

said. "We have been lucky in that we have had only one small fire in the past few months. We had one fire in May, but got it out before any serious damage was done." When I asked about the fire fighting crews Crawford answered, "We have the four crews that get paid for six months, but must fight fire or work for one hundred hours. If we have no fires then the crews work on the trails, camps and towers. In this manner we can keep up and improve our trails, making it easier for the people who like to hike and use the mountain ways. In the not too far future we hope to have the mountains easily accessible to scouts, campers, hikers and hunters, so the more effort the people make to keep down fire then the more time we can spend on making things more pleasant for them on their outings." All this made the pleasant fire fighter's argument more logical, and when I left with a grin he chided, "Do your part to help keep Tennessee green." That I promised to do.

Figure 8: Newspaper article discussing the English Mountain Fire Lookout Tower's function and connection to the community. *Newport Plain Talk*, date unknown. Courtesy of John Henderson, Area Forester, East TN Division.





































317F































UNITED STATES DEPARTMENT OF THE INTERIOR  
NATIONAL PARK SERVICE

NATIONAL REGISTER OF HISTORIC PLACES  
EVALUATION/RETURN SHEET

REQUESTED ACTION: NOMINATION

PROPERTY English Mountain Fire Lookout Tower  
NAME:

MULTIPLE Tennessee Division of Forestry Fire Lookout Towers MPS  
NAME:

STATE & COUNTY: TENNESSEE, Cocke

DATE RECEIVED: 10/09/15 DATE OF PENDING LIST: 11/04/15  
DATE OF 16TH DAY: 11/19/15 DATE OF 45TH DAY: 11/24/15  
DATE OF WEEKLY LIST:

REFERENCE NUMBER: 15000832

REASONS FOR REVIEW:

APPEAL: N DATA PROBLEM: N LANDSCAPE: N LESS THAN 50 YEARS: N  
OTHER: N PDIL: N PERIOD: N PROGRAM UNAPPROVED: N  
REQUEST: Y SAMPLE: N SLR DRAFT: N NATIONAL: N

COMMENT WAIVER: N

ACCEPT  RETURN  REJECT 11-20-2015 DATE

ABSTRACT/SUMMARY COMMENTS:

*Meets Registration Requirements of MPS*

RECOM./CRITERIA Accept Arc

REVIEWER J. Gabbar DISCIPLINE \_\_\_\_\_

TELEPHONE \_\_\_\_\_ DATE \_\_\_\_\_

DOCUMENTATION see attached comments Y/N  see attached SLR  N

If a nomination is returned to the nominating authority, the nomination is no longer under consideration by the NPS.



**TENNESSEE HISTORICAL COMMISSION**  
STATE HISTORIC PRESERVATION OFFICE  
2941 LEBANON ROAD  
NASHVILLE, TENNESSEE 37243-0442  
OFFICE: (615) 532-1550  
E-mail: [Claudette.Stager@tn.gov](mailto:Claudette.Stager@tn.gov)  
(615) 770-1089  
[www.tnhistoricalcommission.org](http://www.tnhistoricalcommission.org)

RECEIVED 2280

OCT -9 2015

Nat. Register of Historic Places  
National Park Service

September 29, 2015

J. Paul Loether  
Deputy Keeper and Chief,  
National Register and National Historic Landmark Programs  
National Register of Historic Places  
1201 Eye Street NW, 8<sup>th</sup> floor  
Washington, DC 20005

Dear Mr. Loether:

Enclosed please find the documentation to nominate the *English Mountain Fire Lookout Tower* to the National Register of Historic Places. The enclosed disks contain the true and correct copy of the nomination for the listing of the *English Mountain Fire Lookout Tower* to the National Register of Historic Places. For more information regarding the Tennessee Fire Lookout Towers please refer to the *Tennessee Division of Forestry Fire Lookout Towers, 1933-1975 Multiple Property Document* which was accepted on March 31, 2015.

If you have any questions or if more information is needed, contact Peggy Nickell at 615/770-1087 or [Peggy.Nickell@tn.gov](mailto:Peggy.Nickell@tn.gov).

Sincerely,

A handwritten signature in blue ink, appearing to read "Claudette Stager".

Claudette Stager  
Deputy State Historic Preservation Officer

CS:pn

Enclosures(3)