



UNITED STATES DEPARTMENT OF THE INTERIOR
NATIONAL PARK SERVICE

Photo 1

NATIONAL REGISTER OF HISTORIC PLACES
PROPERTY PHOTOGRAPH FORM

(Type all entries - attach to or enclose with photograph)

1. NAME

COMMON

AND/OR HISTORIC

NUMERIC CODE (Assigned by NPS)

Humboldt Cave

MAR 15 1976

2. LOCATION

STATE

COUNTY

TOWN

Nevada

Churchill

STREET AND NUMBER

3. PHOTO REFERENCE

PHOTO CREDIT

DATE

NEGATIVE FILED AT
Winnemucca District Office
Winnemucca, Nevada

Bureau of Land Management

October 10, 1973

4. IDENTIFICATION

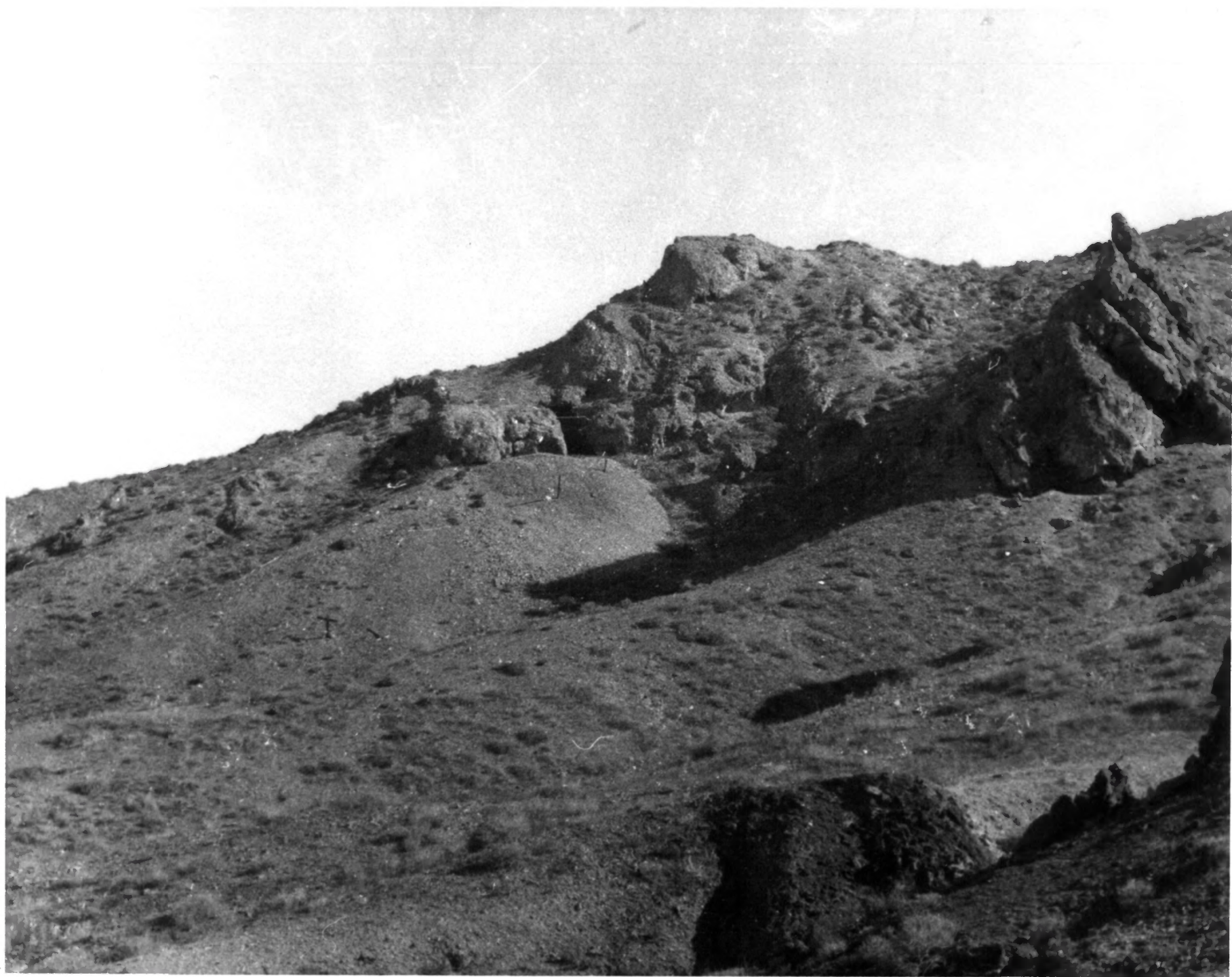
DESCRIBE VIEW, DIRECTION, ETC.

Cave opening is just to the left of Bob Cordell



142

142



UNITED STATES DEPARTMENT OF THE INTERIOR
NATIONAL PARK SERVICE

Photo 2

NATIONAL REGISTER OF HISTORIC PLACES
PROPERTY PHOTOGRAPH FORM

(Type all entries - attach to or enclose with photograph)

1. NAME

COMMON

AND/OR HISTORIC

NUMERIC CODE (Assigned by NPS)

MAR 15 1976

Humboldt Cave

2. LOCATION

STATE

COUNTY

TOWN

Nevada

Churchill

STREET AND NUMBER

3. PHOTO REFERENCE

PHOTO CREDIT

DATE

NEGATIVE FILED AT

Bureau of Land Management

October 10, 1973

Winnemucca District Office
Winnemucca BLM Office

4. IDENTIFICATION

DESCRIBE VIEW, DIRECTION, ETC.

Looking southwest about 1/4 mile from the cave.



2 of 2