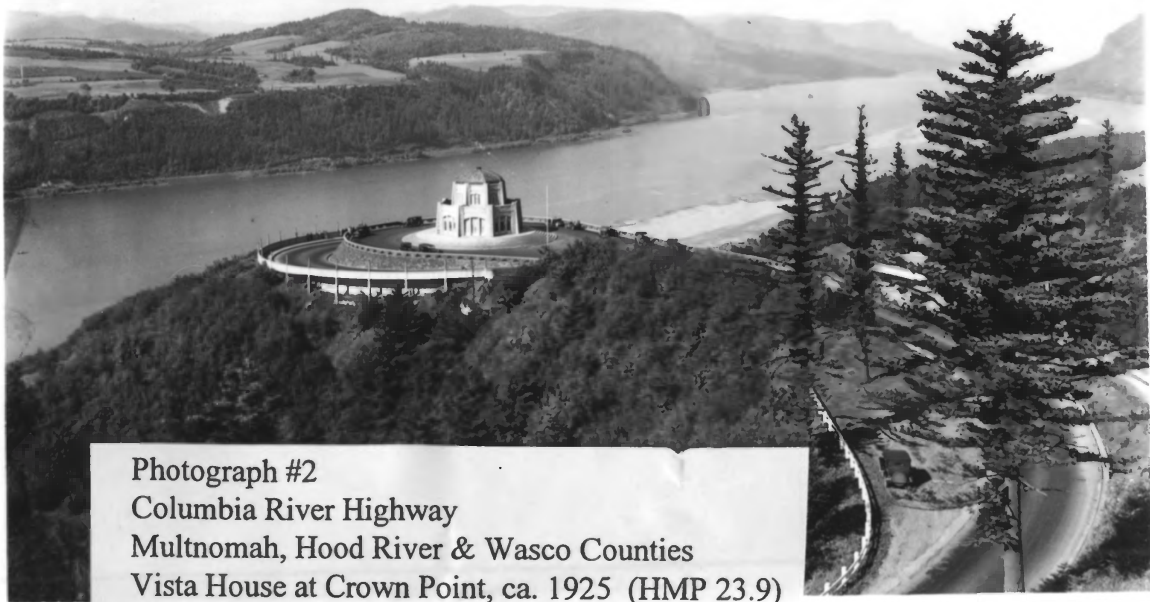
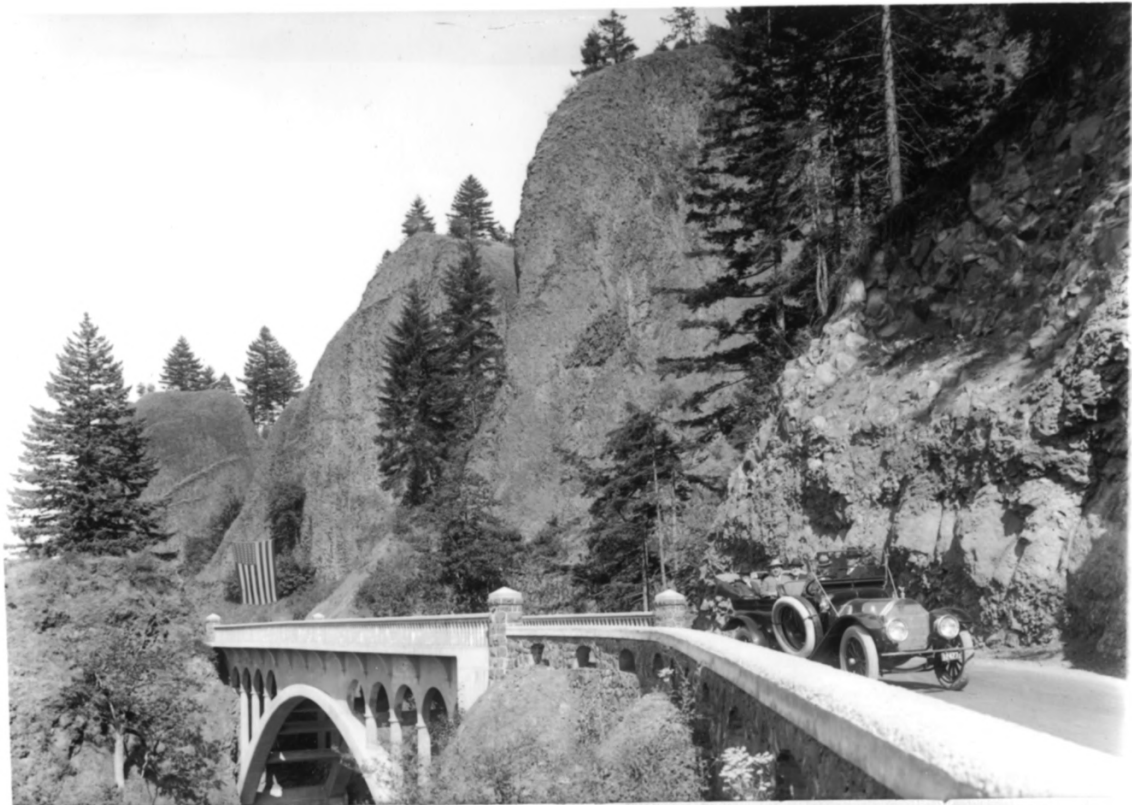


Photograph #1
Columbia River Highway
Multnomah, Hood River & Wasco Counties
Formal dedication at Crown Point, June 7, 1916 (HMP 23.9)
Oregon Historical Society Collection



Photograph #2
Columbia River Highway
Multnomah, Hood River & Wasco Counties
Vista House at Crown Point, ca. 1925 (HMP 23.9)
Oregon Historical Society Collection



Photograph #3

Columbia River Highway

Multnomah, Hood River & Wasco Counties

Dignitaries at Shepperd's Dell Bridge during dedication, June 7, 1916 (HMP 27.4)

Oregon Historical Society Collection



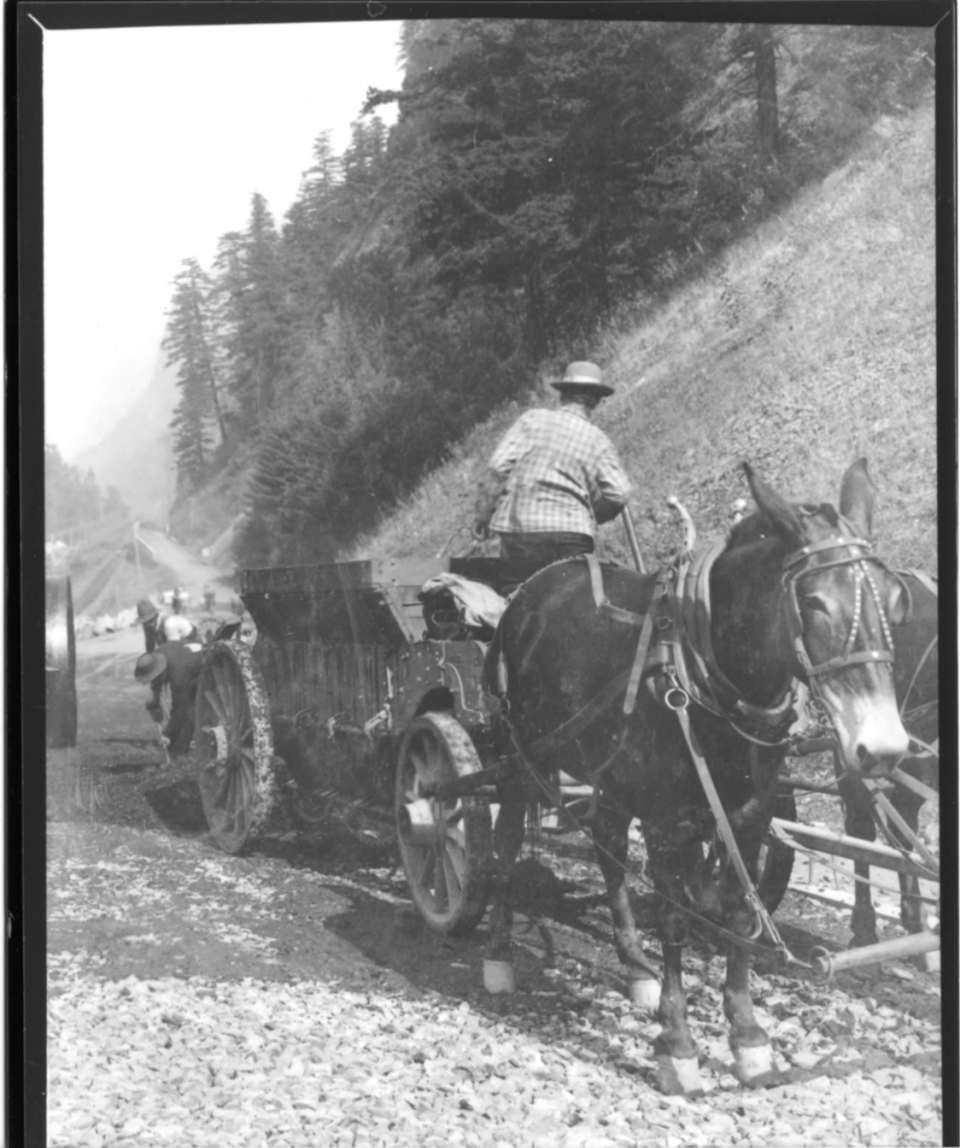
Photograph #4

Columbia River Highway

Multnomah, Hood River & Wasco Counties

At Bishop's Cap, east of Shepperd's Dell (S.C. Lancaster in dark hat), June 7, 1916 (HMP 27.5)

Oregon Historical Society Collection



Photograph #5
Columbia River Highway
Multnomah, Hood River & Wasco Counties
Workers paving highway west of West Multnomah Falls Viaduct, ca. 1915 (HMP 31.7)
Oregon Historical Society Collection



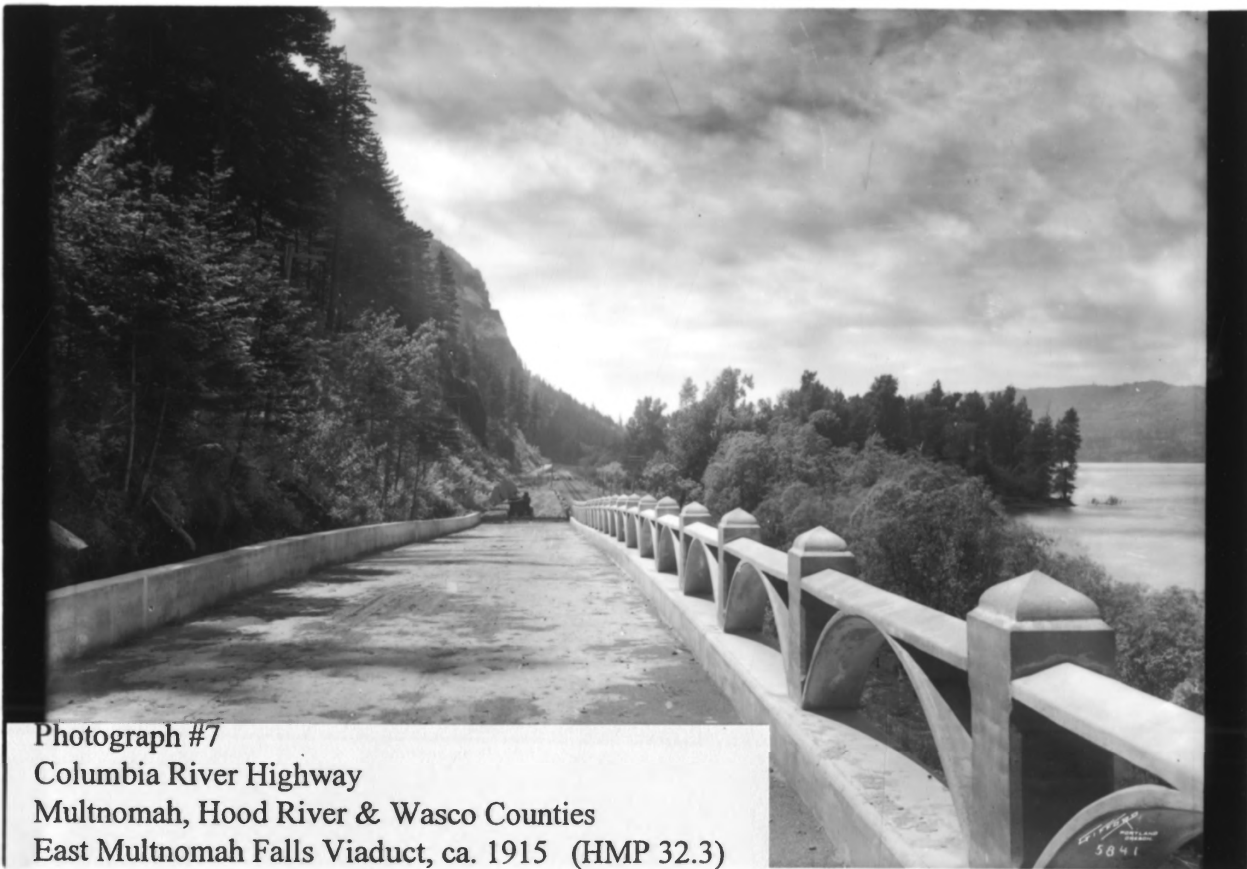
Photograph #6

Columbia River Highway

Multnomah, Hood River & Wasco Counties

Multnomah Lodge and Falls, ca.1948 (HMP 32.1)

Sawyer Postcards, Oregon Historical Society Collection



Photograph #7

Columbia River Highway

Multnomah, Hood River & Wasco Counties

East Multnomah Falls Viaduct, ca. 1915 (HMP 32.3)

Gifford Postcards, Oregon Historical Society Collection



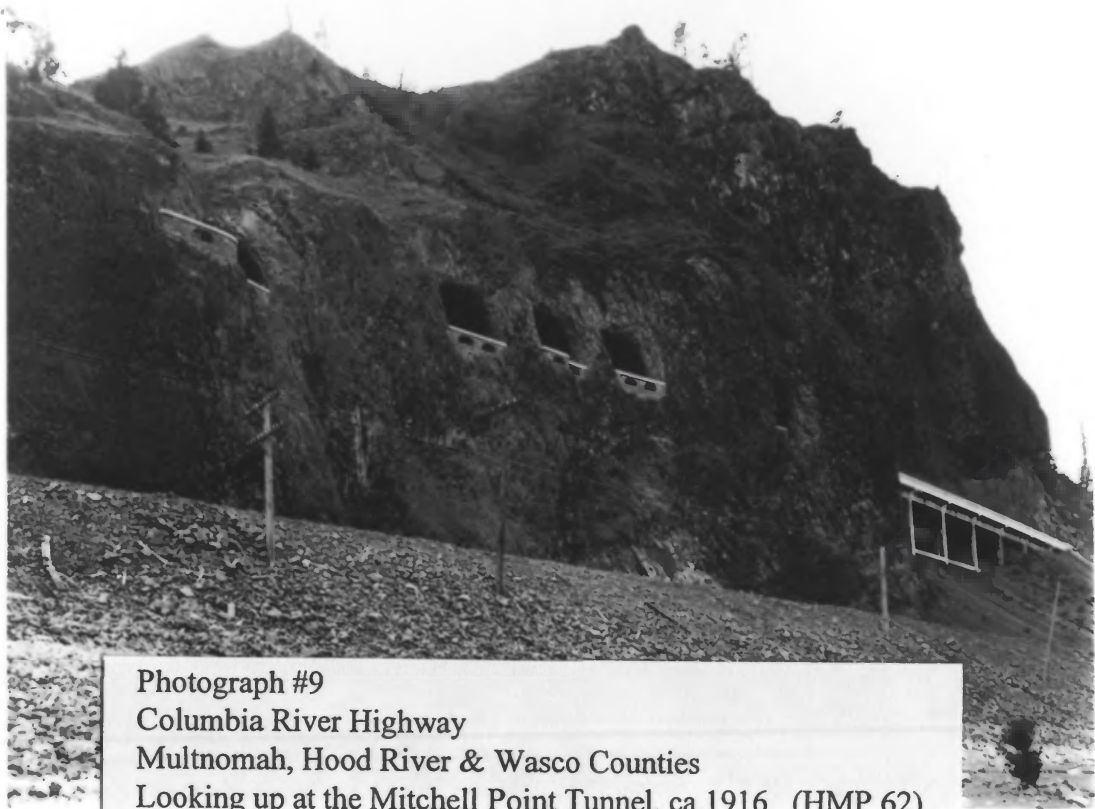
Photograph #8

Columbia River Highway

Multnomah, Hood River & Wasco Counties

Masonry retaining and guard walls at Shellrock Mountain, ca. 1916 (Approx. HMP 56)

Oregon Historical Society Collection



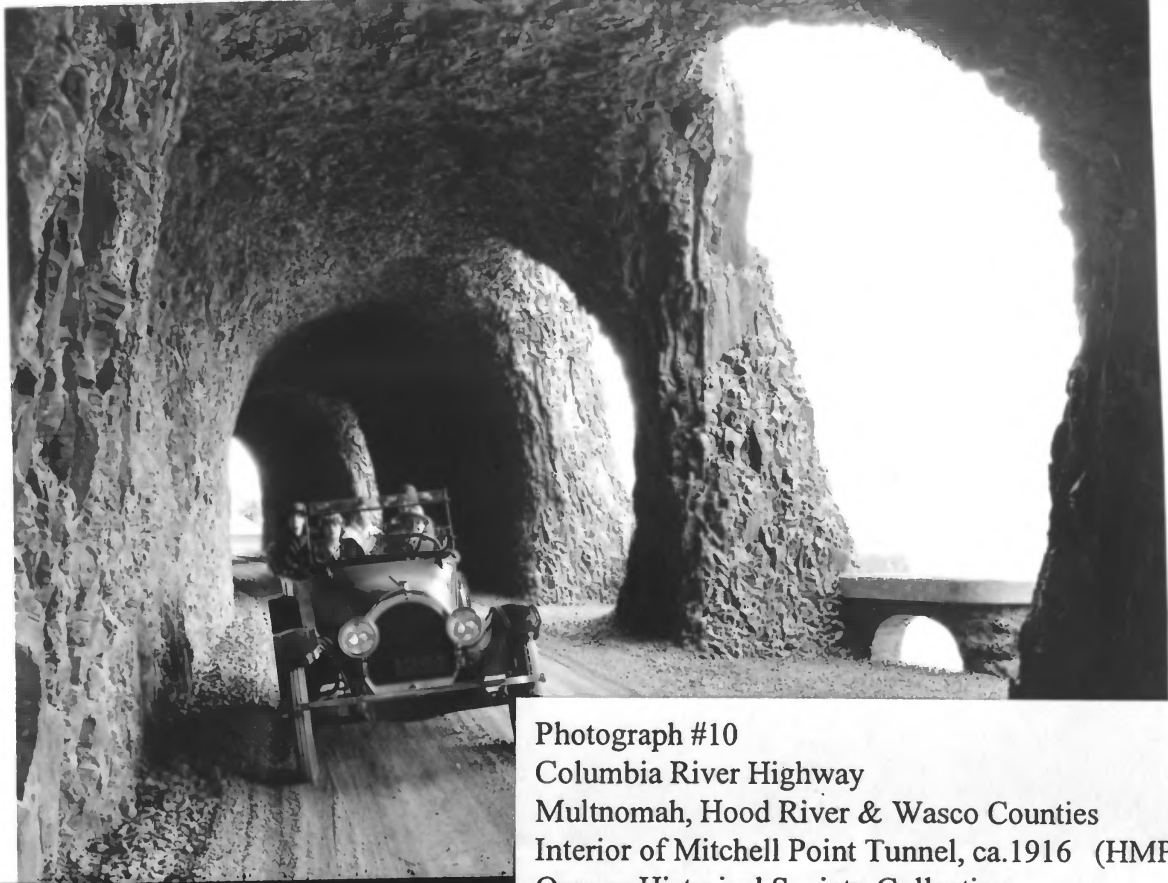
Photograph #9

Columbia River Highway

Multnomah, Hood River & Wasco Counties

Looking up at the Mitchell Point Tunnel, ca.1916 (HMP 62)

Oregon Historical Society Collection



Photograph #10
Columbia River Highway
Multnomah, Hood River & Wasco Counties
Interior of Mitchell Point Tunnel, ca.1916 (HMP 62)
Oregon Historical Society Collection



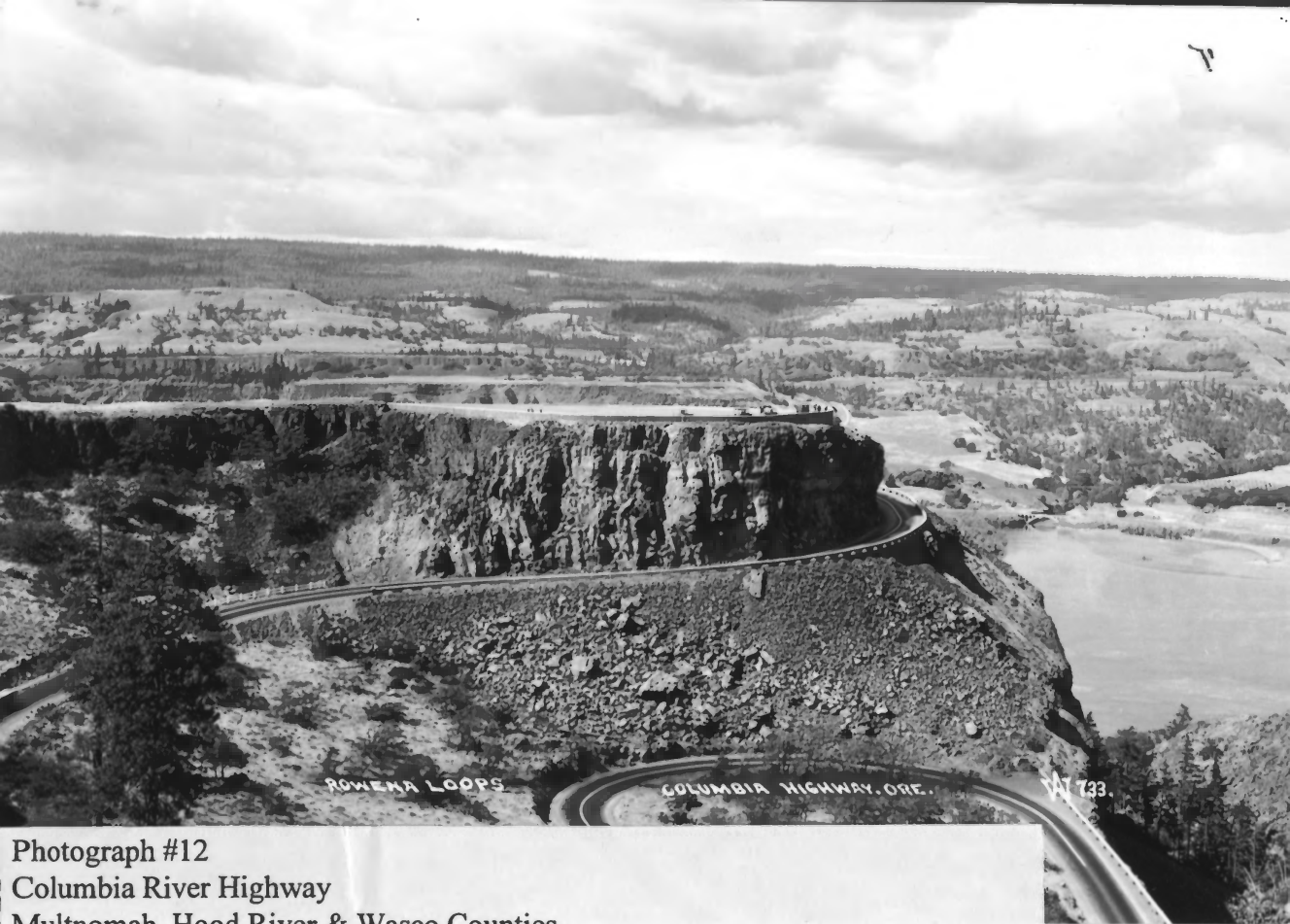
Photograph #11

Columbia River Highway

Multnomah, Hood River & Wasco Counties

Western portal of western tunnel of Mosier Twin Tunnels, mid 1920s (HMP 71.9)

Oregon Historical Society Collection



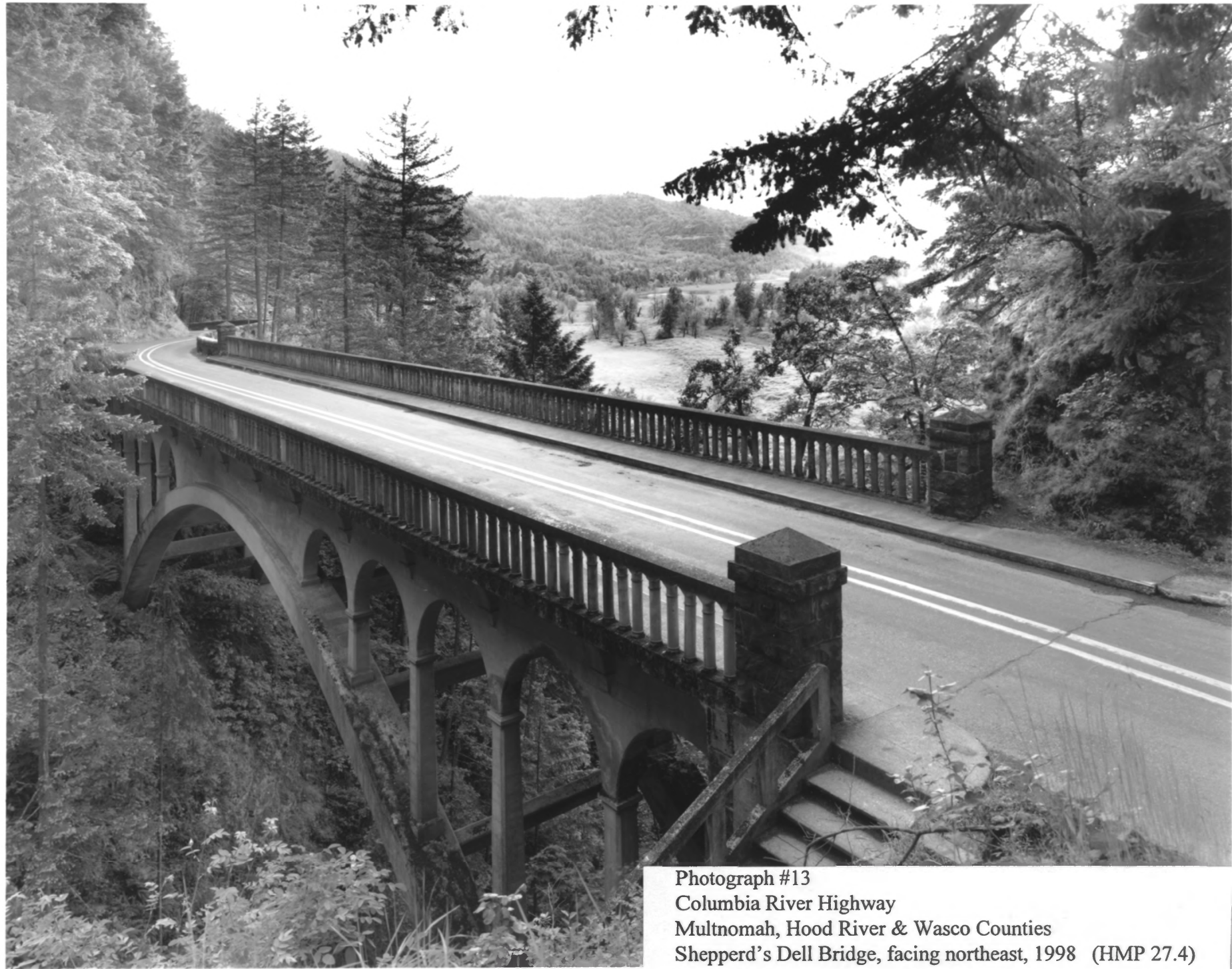
Photograph #12

Columbia River Highway

Multnomah, Hood River & Wasco Counties

Rowena Loops and Rowena Crest Overlook, facing west, mid 1920s (HMP 79.8)

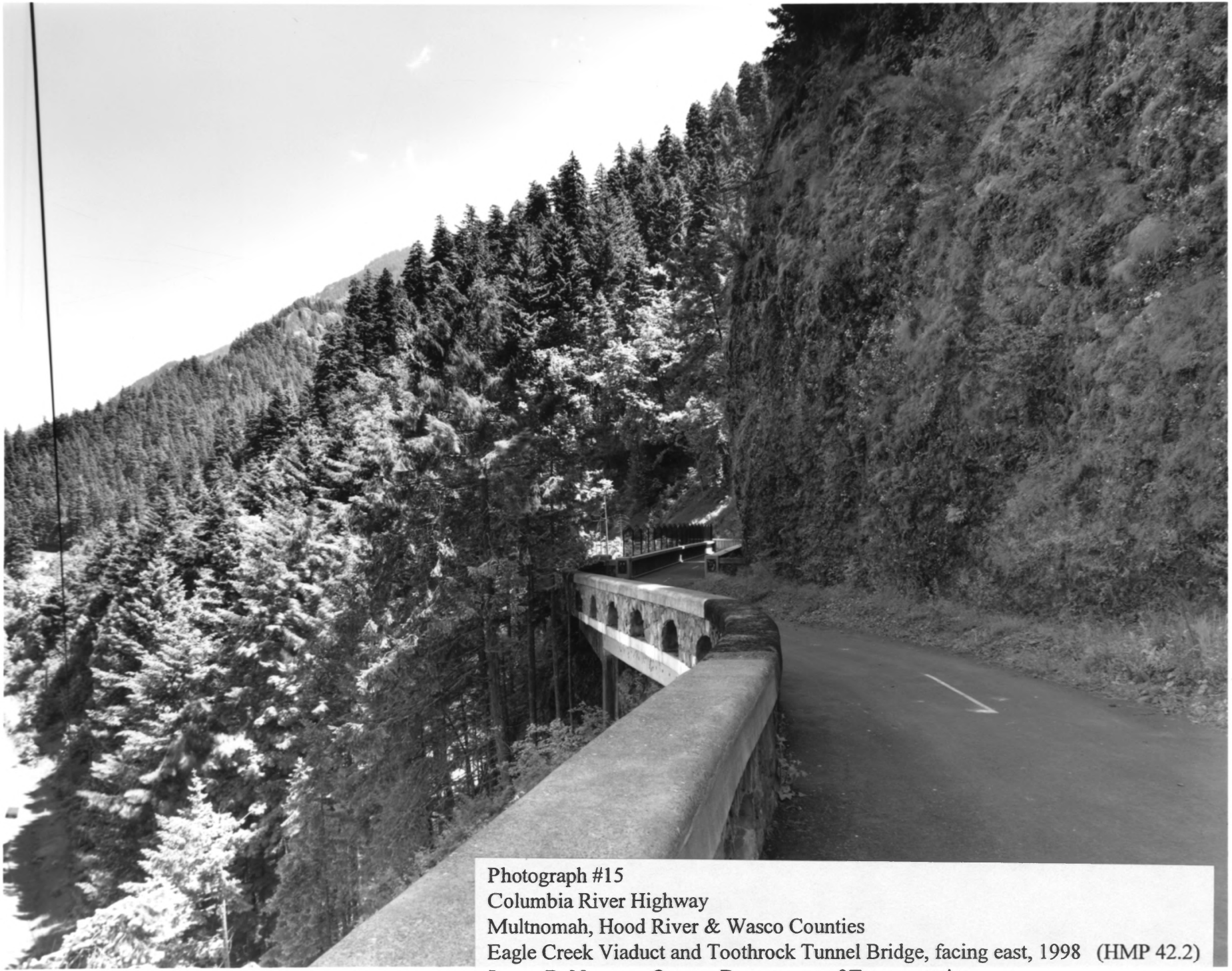
Oregon Historical Society Collection



Photograph #13
Columbia River Highway
Multnomah, Hood River & Wasco Counties
Shepperd's Dell Bridge, facing northeast, 1998 (HMP 27.4)
James B. Norman, Oregon Department of Transportation



Photograph #14
Columbia River Highway
Multnomah, Hood River & Wasco Counties
Toothrock and Eagle Creek Viaducts, facing east, 1998 (HMP 42.1)
James B. Norman, Oregon Department of Transportation



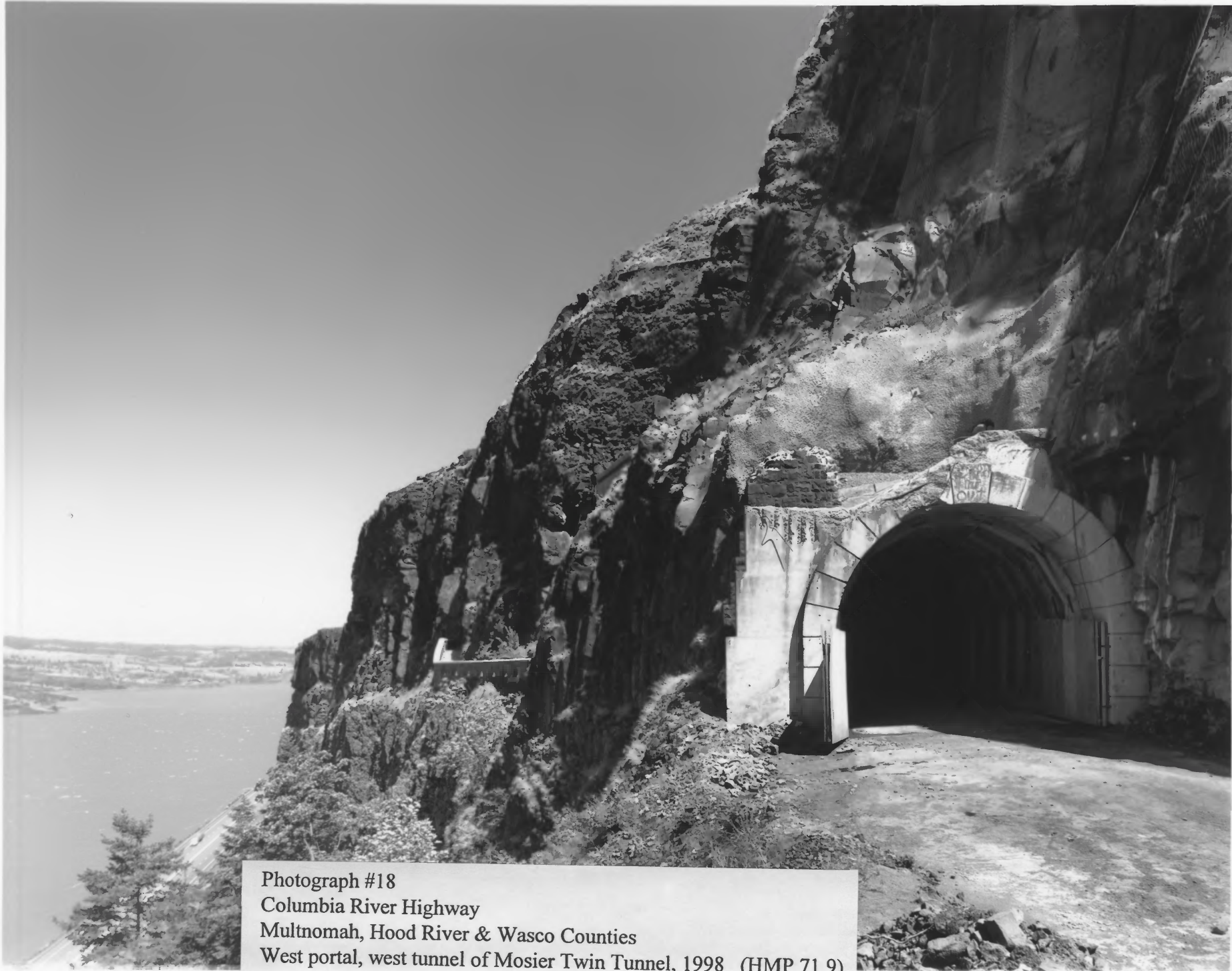
Photograph #15
Columbia River Highway
Multnomah, Hood River & Wasco Counties
Eagle Creek Viaduct and Toothrock Tunnel Bridge, facing east, 1998 (HMP 42.2)
James B. Norman, Oregon Department of Transportation



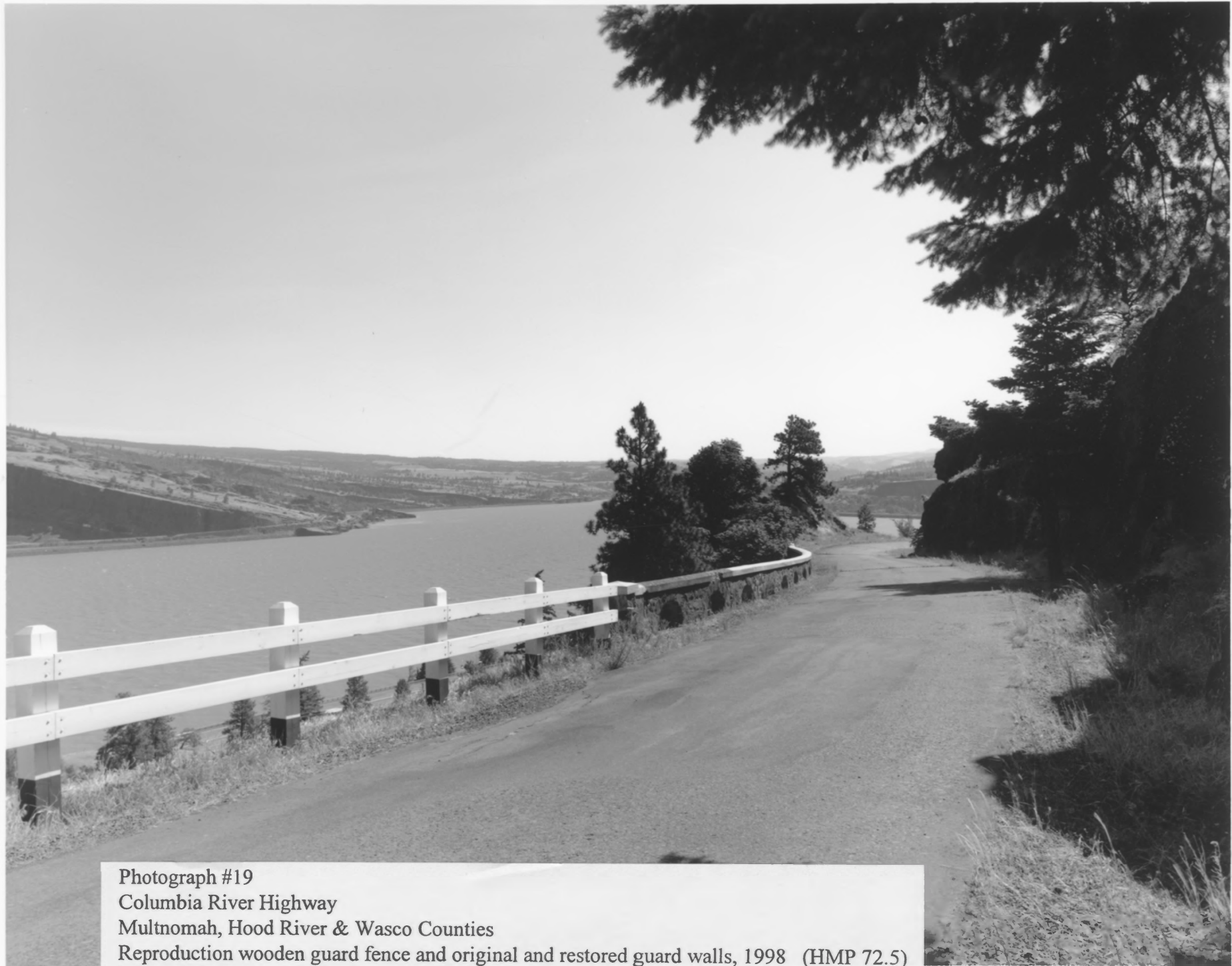
Photograph #16
Columbia River Highway
Multnomah, Hood River & Wasco Counties
Masonry guard walls near Rock Slide Viaduct, facing west, 1998 (HMP 69.9)
James B. Norman, Oregon Department of Transportation



Photograph #17
Columbia River Highway
Multnomah, Hood River & Wasco Counties
Restored County Line Overlook, facing northwest, 1998 (HMP 71)
James B. Norman, Oregon Department of Transportation



Photograph #18
Columbia River Highway
Multnomah, Hood River & Wasco Counties
West portal, west tunnel of Mosier Twin Tunnel, 1998 (HMP 71.9)
James B. Norman, Oregon Department of Transportation



Photograph #19

Columbia River Highway

Multnomah, Hood River & Wasco Counties

Reproduction wooden guard fence and original and restored guard walls, 1998 (HMP 72.5)

James B. Norman, Oregon Department of Transportation



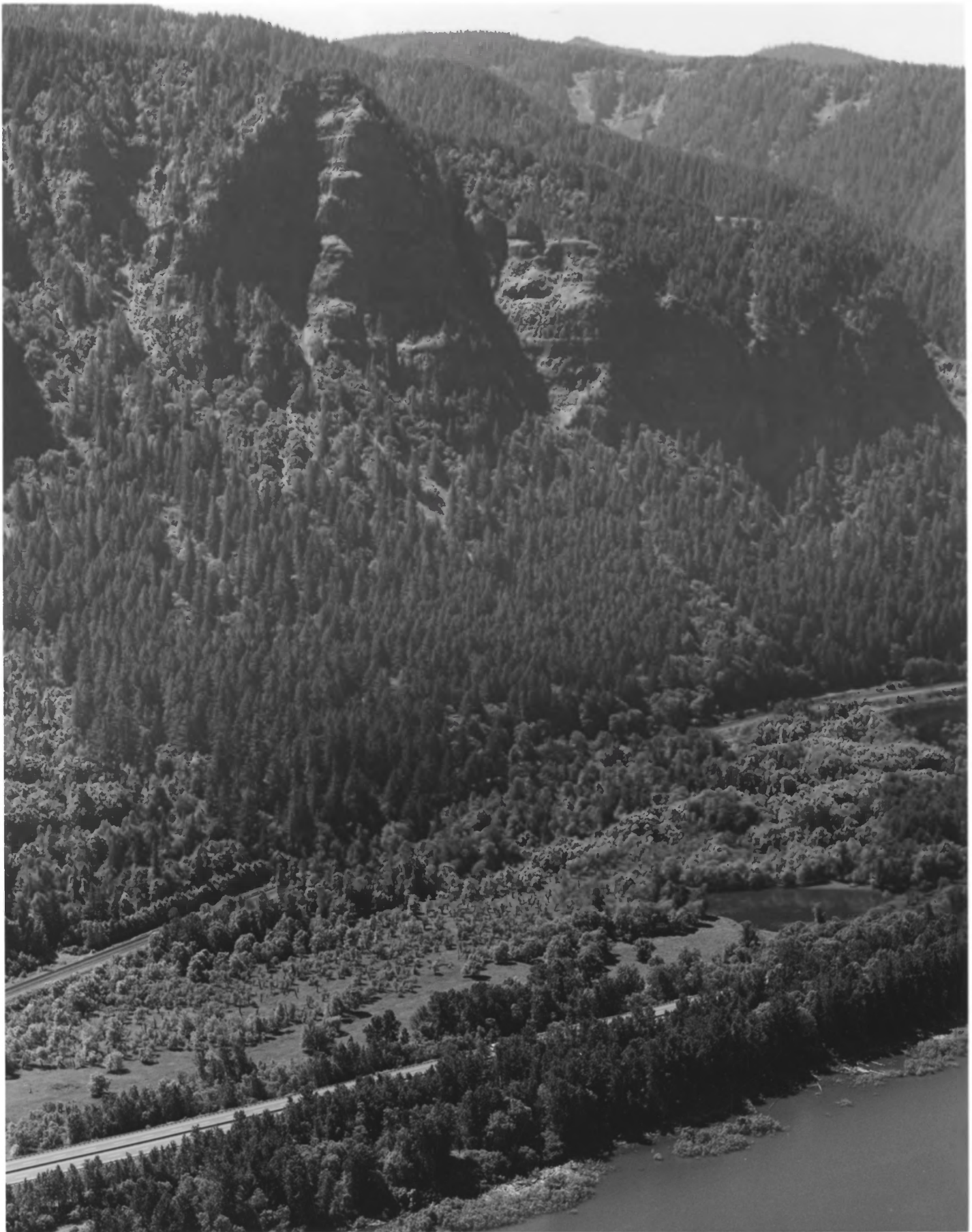
ROOSTER ROCK STATE PARK



Multnomah Falls, one of the highest waterfalls in the United States, tumbles down in two cascades in Oregon's Columbia River Gorge. A visitors' center with a coffee shop is located near the foot of the hiking trail which leads to the top of the falls. Multnomah Falls is one of 11 waterfall spectacles found within an 11-mile stretch of the Gorge between Portland and Bonneville Dam.

Multnomah County.

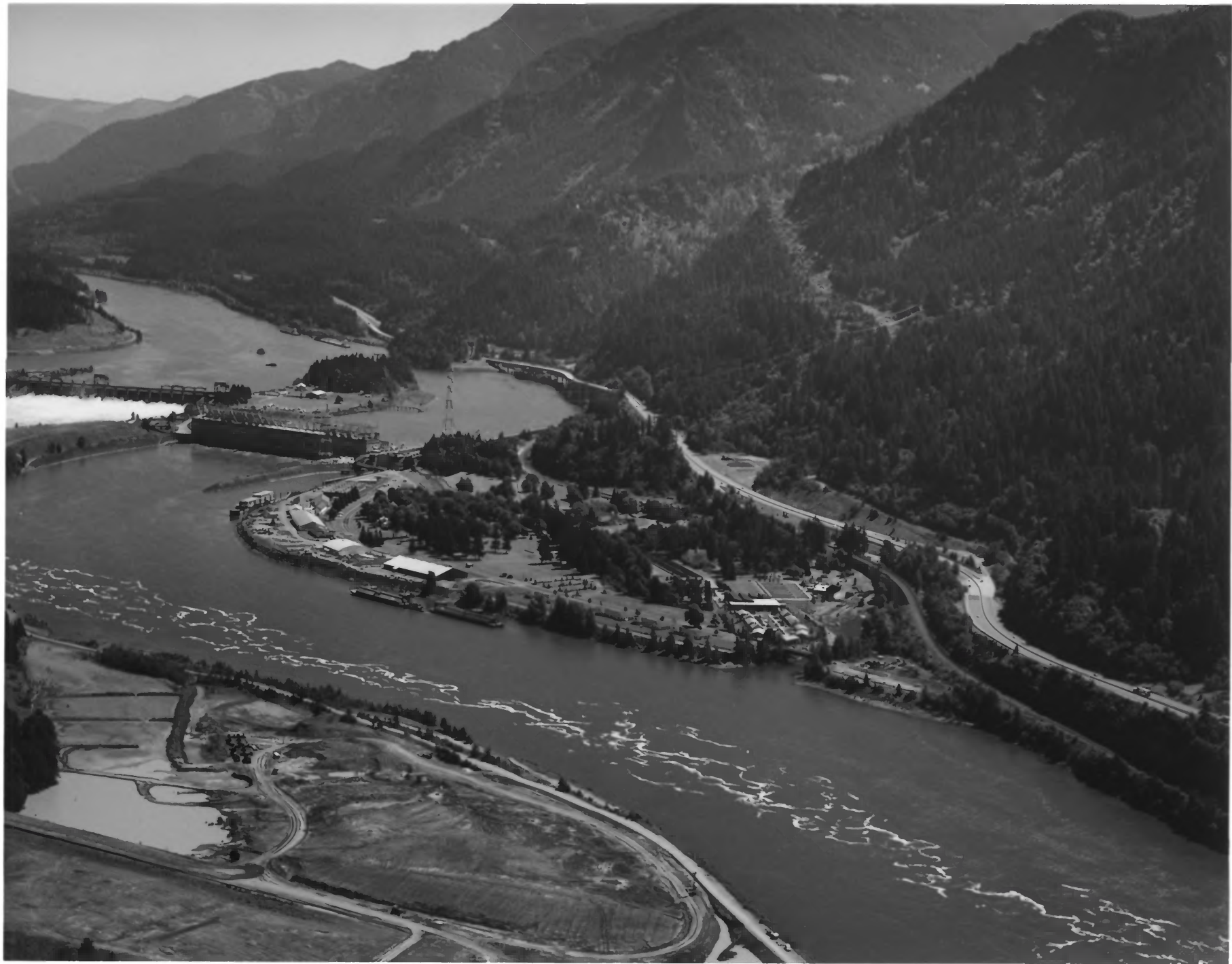
Oregon Department of Transportation Photo 8064



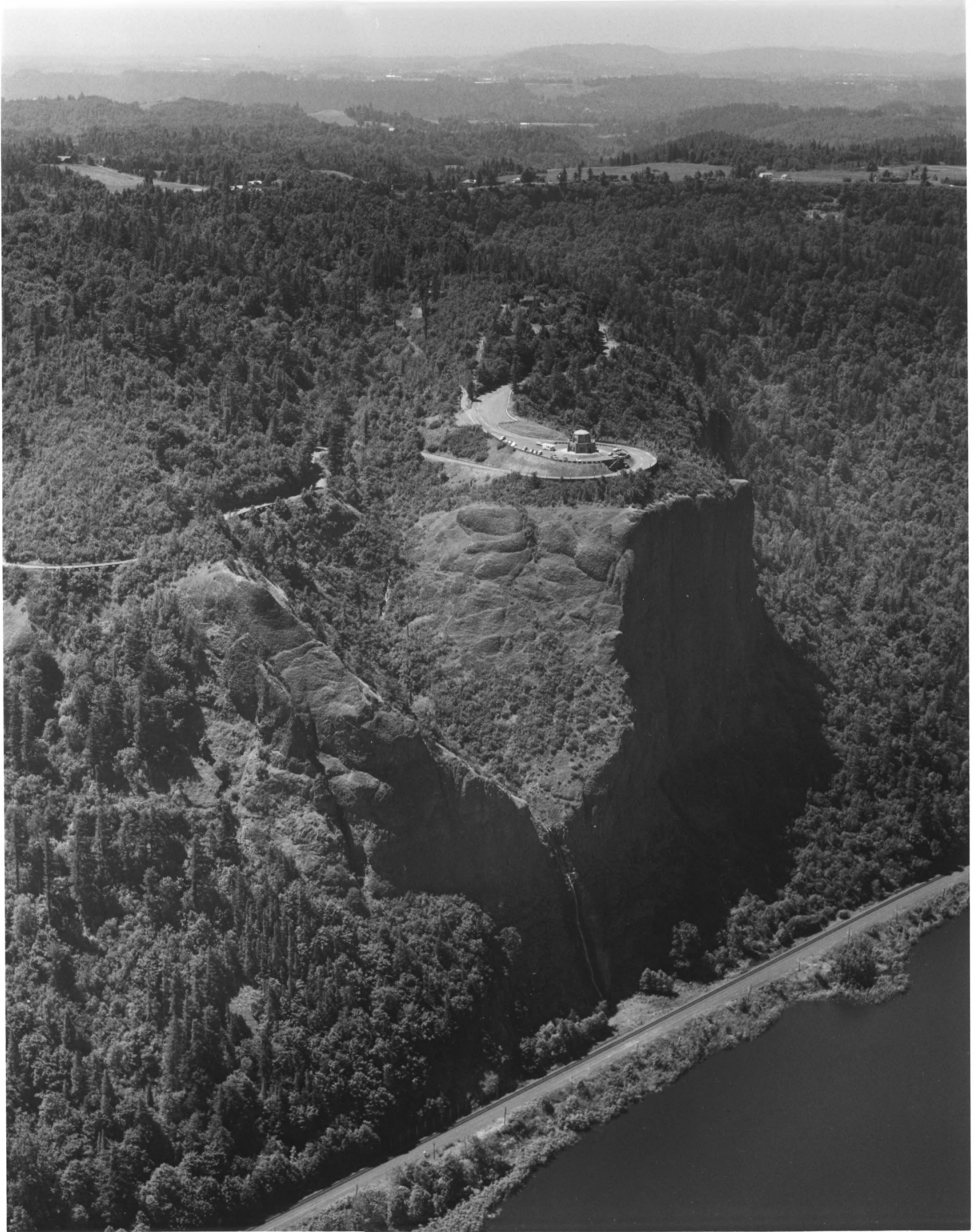
AINSWORTH STATE PARK



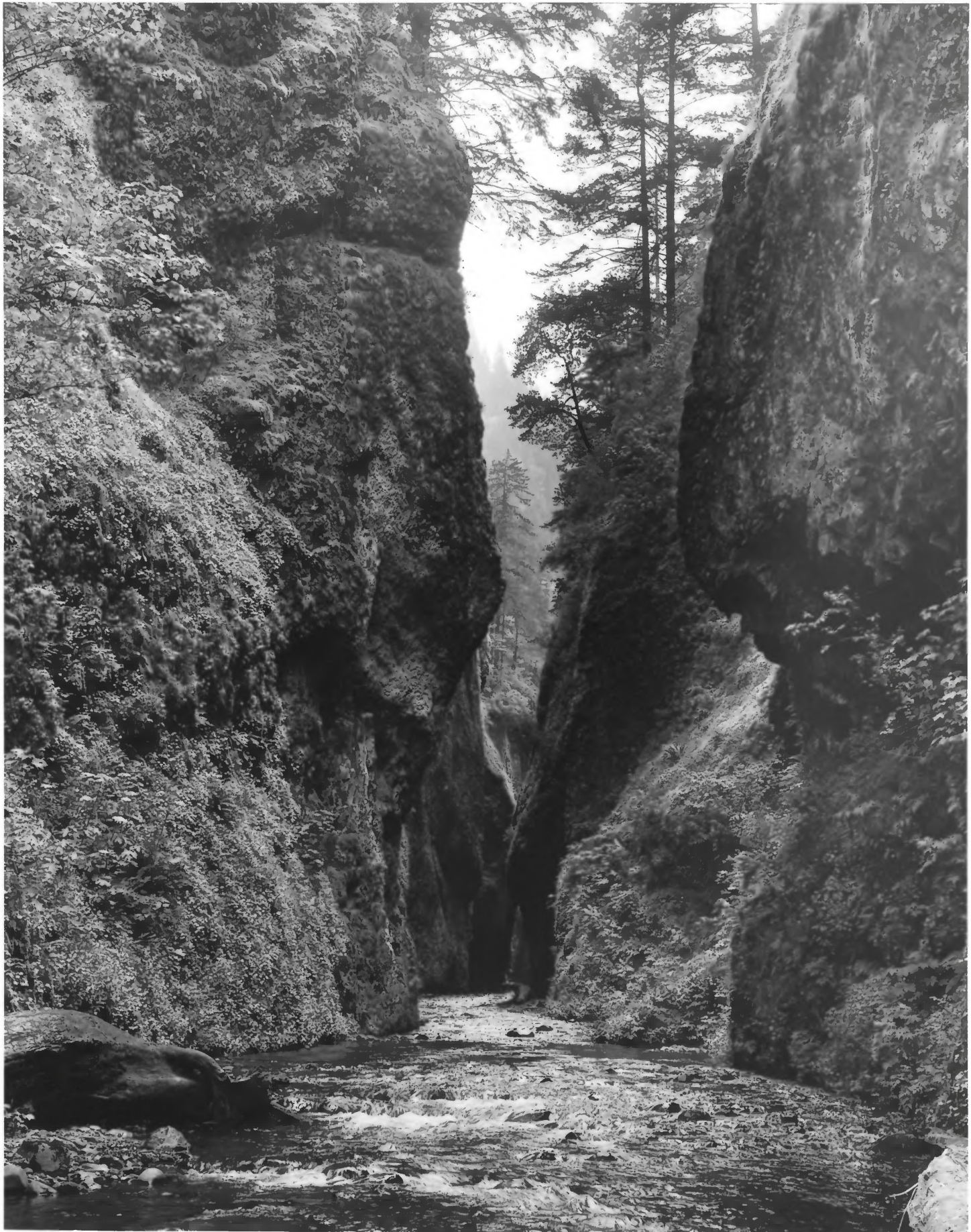
JOHN B. YEON STATE PARK



BONNEVILLE DAM - COLUMBIA RIVER



VISTA HOUSE AT CROWN POINT STATE PARK



In a steep, rock-sided glen, Oneonta Gorge is bordered by moss-covered cliffs near Oregon's Columbia River U.S. Highway 30 (scenic route). Waterfalls, fed by snowfields of the high Cascade Mountains, are numerous in the Columbia Gorge area, with as many as 11 within one 11-mile section of this famed highway.

Multnomah County

Oregon Department of Transportation Photo 5944



Current-day explorers enjoy the trees, shrubs and flowers first described in the journals of the Lewis and Clark Expedition during a stroll on the Lewis and Clark Nature Trail east of Portland. The quarter-mile trail in Lewis and Clark State Park, with its special plantings, was developed in observance of the 175th anniversary of the Expedition. Lewis and Clark State Park is on the banks of the Sandy River just east of Troutdale off Interstate Highway 84.

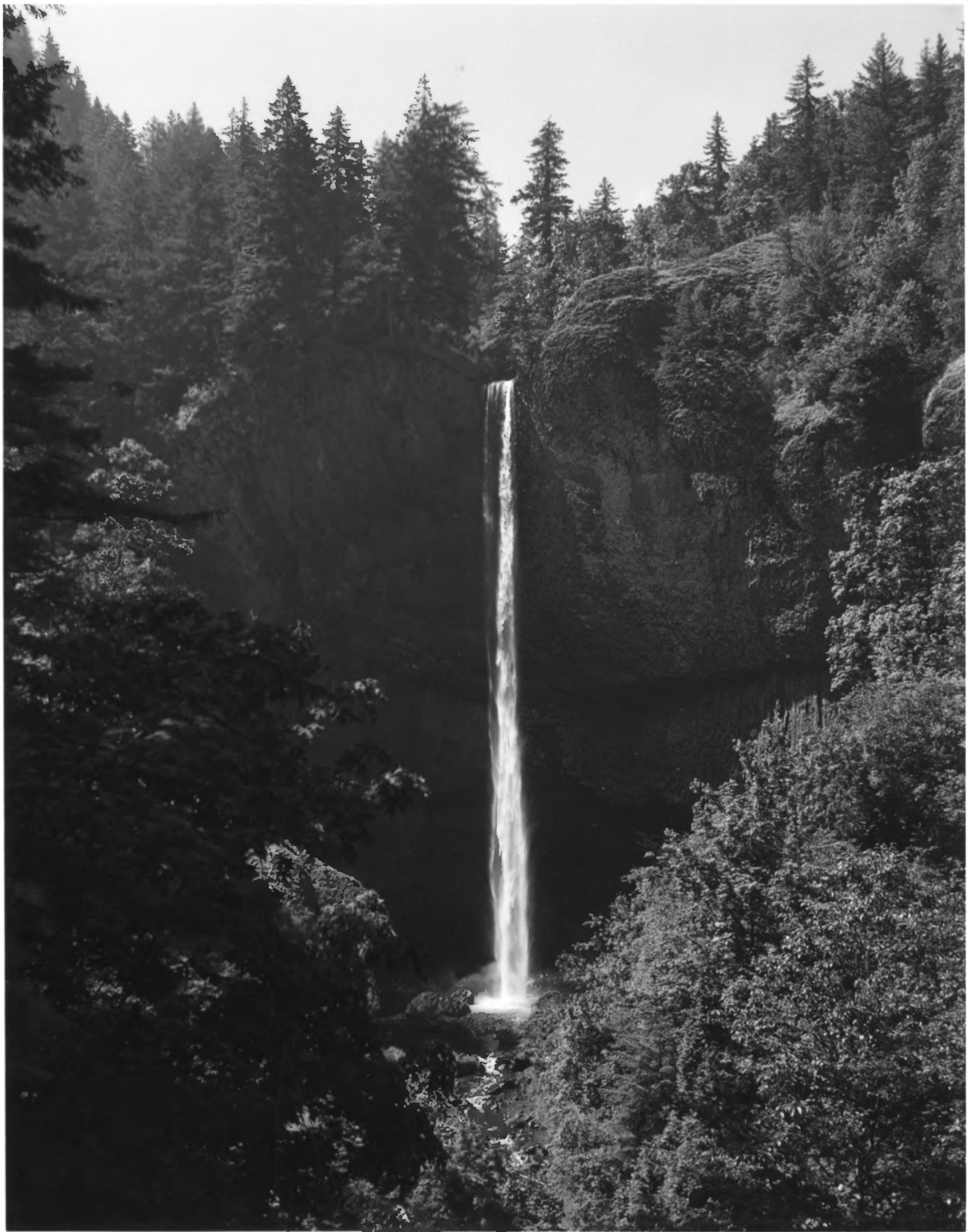


LEWIS AND CLARK EXPEDITION — SANDY RIVER —

THE TWO GREAT AMERICAN EXPLORERS, MERIWETHER LEWIS AND WILLIAM CLARK, ENROUTE TO THE PACIFIC OCEAN ON NOVEMBER 3, 1805, HALTED AT THE MOUTH OF THIS RIVER WHICH THEY REPORTED "THROWS OUT EMECE QUANTITYS OF SAND AND IS VERRY SHALLOW." CLARK ATTEMPTED TO WADE ACROSS BUT "FOUND THE BOTTOM QUICK SAND." THUS THE CAPTAINS NAMED IT THE "QUICK SAND RIVER." THEY TRAVELED ONE AND A HALF MILES UP THE RIVERBANK, REACHING THIS GENERAL VICINITY BEFORE RETURNING TO THE COLUMBIA TO MAKE CAMP ON GOVERNMENT ISLAND.

HOMeward BOUND IN THE SPRING OF 1806, THE EXPEDITION CAMPED FOR SIX DAYS ON "A HANDSOME PRAIRIE" OPPOSITE THE SANDY TO MAKE SOME SELESTIAL OBSERVATIONS, TO EXAMINE THE QUICKSAND RIVER AND KILL SOME MEAT." DURING THIS TIME THREE MEN CANOED ABOUT SIX MILES UP THE SANDY, WHILE AWAITING THE RETURN OF THEIR HUNTING PARTY, THE CAPTAINS LEARNED FROM INDIANS THAT THEY HAD PASSED A MAJOR TRIBUTARY OF THE COLUMBIA FOR WHICH THEY HAD BEEN SEARCHING. WITH SEVEN MEN AND AN INDIAN GUIDE, CLARK BACKTRACKED TO EXPLORE THE LOWER WILLAMETTE RIVER. REJOINED BY ITS DETACHMENTS, THE EXPEDITION BROKE CAMP ON APRIL 6 AND MOVED ON.

Visitors to Lewis and Clark State Park read about the Lewis and Clark Expedition's exploration of the Sandy River which flows alongside the park east of Portland. The famed explorers stopped at the river's mouth, noting the "emense quantities of sand," and hiked more than a mile upstream. A quarter-mile nature trail featuring plants described in the Expedition's journals is one of the offerings of the park which is just east of Troutdale off Interstate Highway 84.



Beautiful Latourel Falls drops over a sheer cliff and tumbles 294 feet into Oregon's Columbia River Gorge. It is but one of a series of 11 falls within an 11-mile stretch of the Gorge between Oregon's largest city, Portland, and the Bonneville Dam. The falls is approximately 25 miles west of Portland on Interstate Highway 84.

Multnomah County.

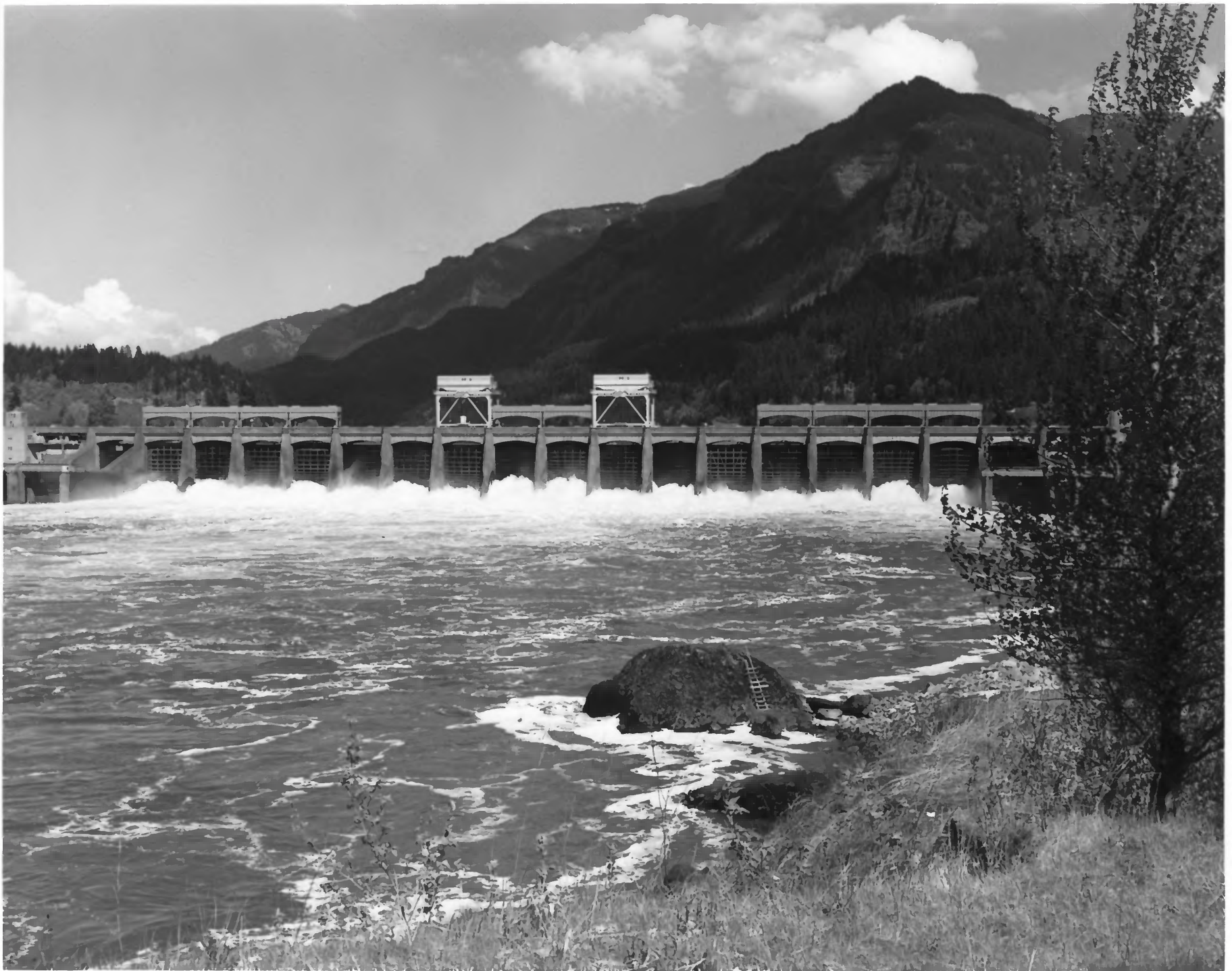
Oregon Department of Transportation Photo 8055V



Mt. Hood from Larch Mtn.

5939

Mt. Hood, highest of Oregon's Cascade mountains, stands 11,245 feet and forms a background for many pictures taken from such places as this scene at the summit of Larch Mountain. The Larch Mountain road begins near Crown Point on the scenic route of the Columbia River highway (U.S. 30). A large parking area, hiking trails, picnic facilities, scenic viewpoints, and plenty of cool clear air are among the attractions of this area. Oregon State Highway Department Photo 5939.



Uniquely designed spillway gates cause the waters of the Columbia River to churn constantly at the base of the structure. The dramatic scene is in easy view of sightseers on the beautifully landscaped grounds of the U.S. Army Corps of Engineers' visitor facilities on Bradford Island. Bonneville Dam is 40 miles east of Portland in the scenic Columbia River Gorge.

MULTNOMAH COUNTY

Oregon Department of Transportation photo 8435



Wah-Keena Falls

7865

Oregon's Wah-Keena Falls derived it's name from a Yakima Indian word meaning "most beautiful." The falls is only one of 11 waterfalls seen along an eleven mile portion of the Columbia River Scenic Highway in the Columbia Gorge east of Portland. A small parking area and a U.S. Forest Service picnic ground are located near the base of the falls.

Multnomah County.

Oregon Department of Transportation Photo 7865



BENSON STATE PARK