



RESTAURANT

WILE HARRIS
SIMPLIS
CONFETTER

TYCO NO TRAIN
RACE CAR SALE
GARYS

GARY'S

TYLTYERT

POSTIE'S
OPTIC

UPTOWN THEATER, 1426-1430 Washington
Ave., Racine, Racine County, WI. Photo
by Diane H. Filipowicz, November, 1980.
Neg. at WI Hist. Society. South eleva-
tion. Photo #1. of 3.

JAN 27 1982

Opens at 2:00 P. M. Tomorrow

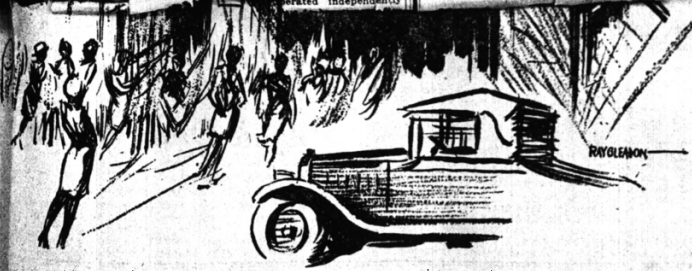
New Majestic's Main Entrance

...the artist de...
 ...the grandest of...
 ...the history in the...
 ...is equipped to...
 ...of that rapidly...
 ...of the city and the...
 ...with the procedure...
 ...in the structure...
 ...and stage pump...
 ...heater of water is...
 ...for staging the...
 ...of "Uptown."
 ...is the pride of "U...
 ...of Racine." The...
 ...of the tribute which...
 ...paid them in mak...
 ...investment in their...
 ...They will enjoy...
 ...appreciation in a...
 ...by attending the...
 ...and in various...
 ...town in this special...
 ...if they be Majestic...
 ...day, but as the...
 ...now pass in proced...
 ...continue in that role...
 ...interest of build...
 ...the new theater as...
 ...interest, ever ready...
 ...in the still greater...
 ..."Uptown—the Heart...
 ...is the biggest aim...
 ...has come to that...
 ...and reflects the spirit...
 ...in which pervades...
 ...to "Uptown," said...
 ...of that dis...
 ...the most welcomed...
 ...people could have...
 ...another expression...
 ...to the worth of...
 ...greater project to the...
 ...well as the residents...
 ...will.



1343 Washington Ave.

All of the electrical power in the theater can be shut off by a single button in the manager's office with the exception of the exit lights operated independently.



The creator of the Majestic brought modern Gothic treatment into the main entrance to the new theater at "Uptown—the Heart of Racine." Its pleasing lines set it out as most distinctive and it is considered highly decorative as far as its immediate location is concerned.

TRNK

Unqualified Charm Marks

bronze with a mass of color ornamentation.
 Beautiful Damask Drapes.
 The theater is equipped with a

TONS OF STEEL

UPTOWN THEATER, 1426-1430 Washington Ave.,
Racine, Racine County, WI. Photo of
Racine Journal-News, April 28, 1928. Neg.

at WI Hist. Society. Sketch of south
elevation. Photo #2 of 3. JAN 27 1982



UPTOWN THEATER, 1426-20 Washington St.,
Racine, Racine Co., Wisc. Photo by Skip
Simonson, Fall 1981. Neg. ⁷⁰⁶in possession
of Uptown Program, Inc., Racine, Wisc.
Interior. Photo #4 of 6.



UPTOWN THEATER, 1426-30 Washington St.,
Racine, Racine Co., Wisc. Photo by Skip
Simonson, Fall 1987-1991 Neg. ~~87~~ 87-100-100-100
of Uptown Program, Inc., Racine, Wisc.
Interior detail. Photo #5 of 6.



UPTOWN THEATER, 1426-30 Washington St.,
Racine, Racine Co., Wisc. Photo by Skip
Simonson, Fall 1981. Neg. in possession
of Uptown Program, Inc., Racine, Wisc.
Interior detail: balcony. Photo #6 of 6.

UPTOWN (MAJESTIC) THEATER

RACINE

