

VIRGIN ISLANDS ST. THOMAS
NASSAU ISLAND HISTORIC DISTRICT
GARRISON HOUSE

4/79

(FT. WILLOUGHBY)

PHOTOGRAPH BY WALTER SMALLING, JR.
FOR OFFICE OF THE NATIONAL REGISTER



VIRGIN ISLANDS ST. THOMAS

NASSAU ISLANDS N.D.

FT. WILLOUGHBY

GARRISON HOUSE

5/79



VIRGIN ISLANDS ST. THOMAS

NASSEL ISLAND HISTORIC
DISTRICT

FT. WILLOUGHBY

5/79



VIRGIN ISLANDS ST. THOMAS

HASSEL ISLAND HISTORIC DISTRICT

FT. WILLOUGHBY

5/79



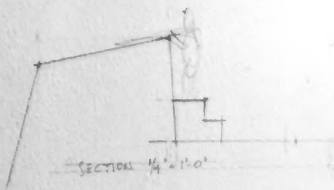
VIRGIN ISLANDS

St. Thomas

NASSER ISLAND N.D.

GARRISON HOUSE

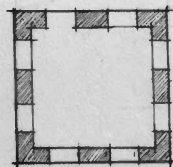
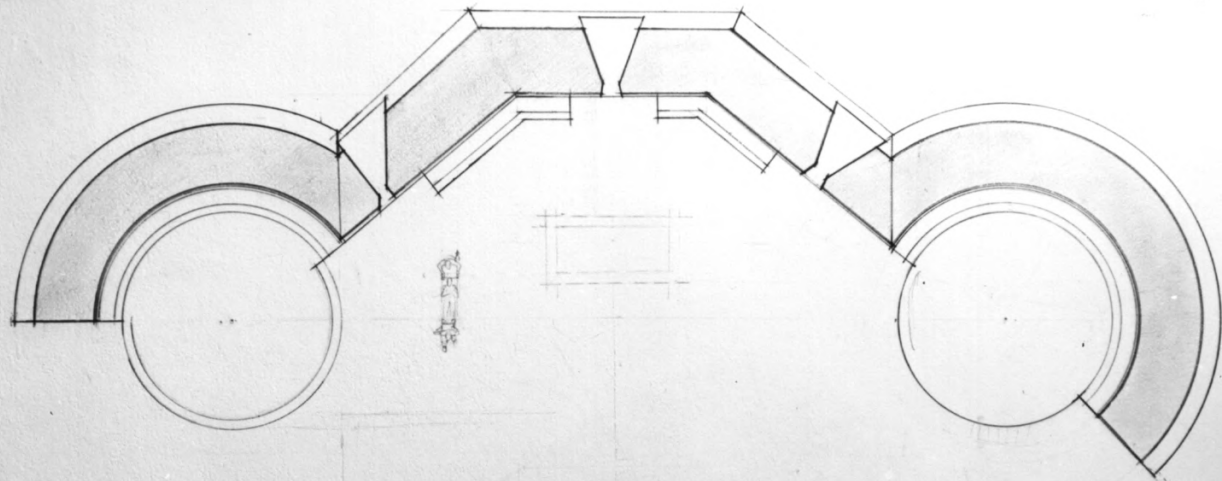
5/79



SHIPLEY'S BATTERY

circa 1807

Hassel Island



*Photographed, measured and delineated by Mark, Dorothy and Roy Isaacs and Alfred Cheswell for
Isidor Palewensky 1912*

1. Northern Hassel Island Historic District-
Fort Shipley
2. St. Thomas, U.S.V.I.
3. Copied by Bob Wands
4. April, 1977
5. V.I. Planning Office
P.O. Box 2606
St. Thomas, Virgin Islands 00801
6. Photograph number -5 87417

AUG 15 1977

AUG 29 1978



1. The Garrison House, Hassel Island
2. Hassel Island, St. Thomas, U.S.V.I.
3. Bob Wands
4. December, 1975
5. P.O. Box 2084, St. Thomas, U.S.V.I.
6. East Facade. Northwest
7. Wands #1 *al d*

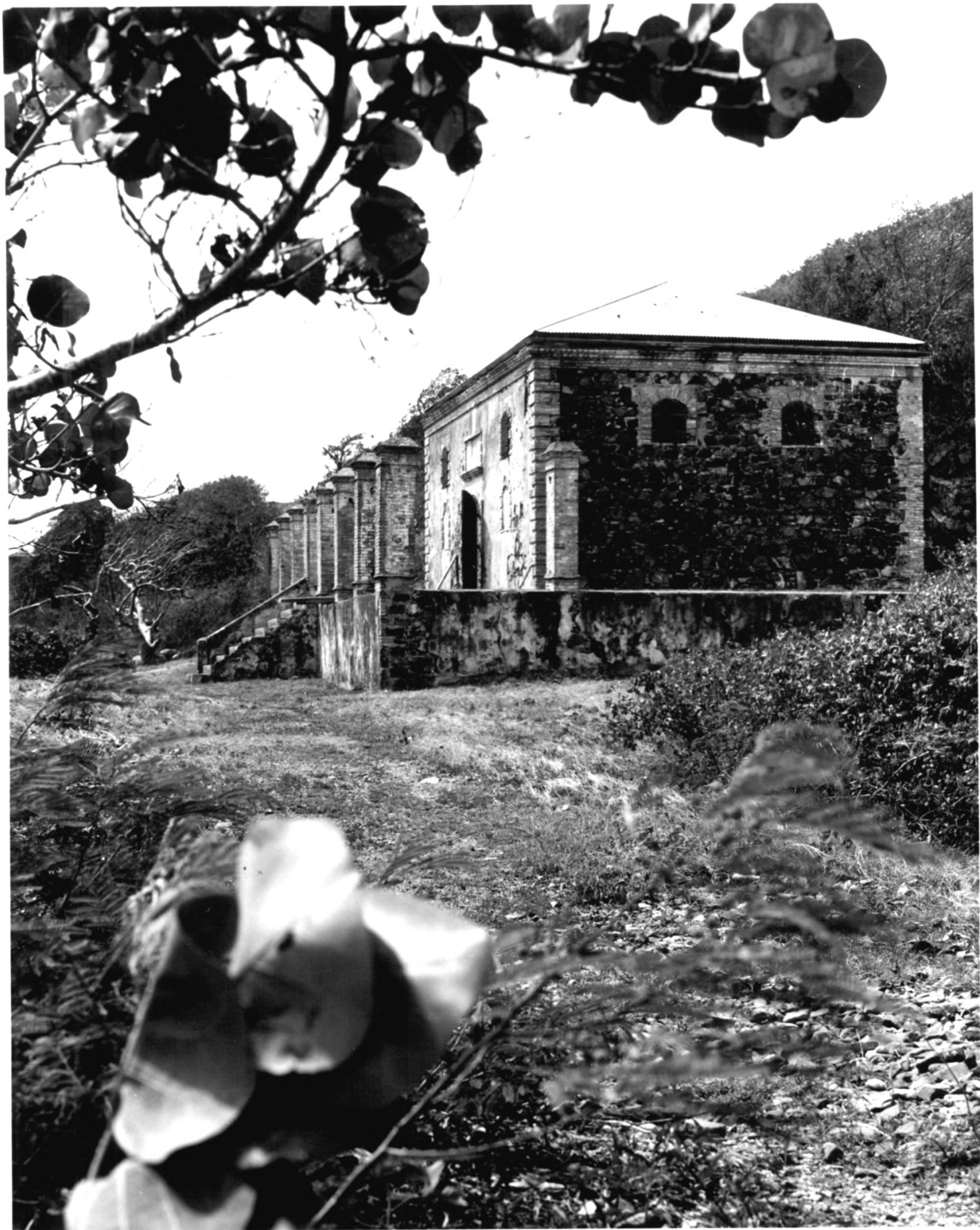
JUL 19 1976

111N
JUN 2

1976

1976

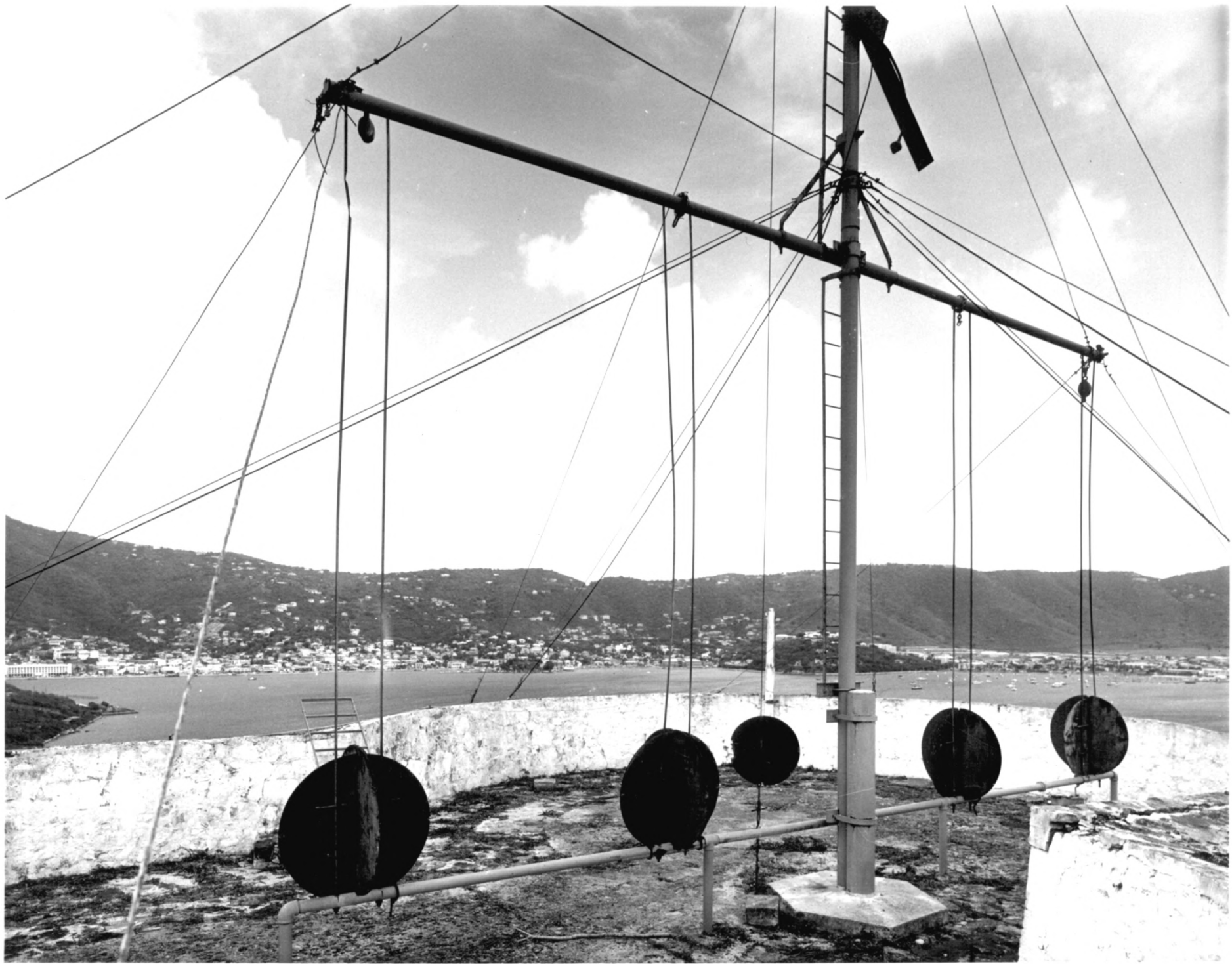
VIA



1. The Garrison House, Hassel Island
2. Hassel Island, St. Thomas, U.S.V.I.
3. Bob Wands
4. December, 1975
5. P.O. Box 2084, St. Thomas, U.S.V.I.
6. North and East Facade. South
7. Wands #2 of 4

JUL 10 1976 JUN '2 1976





1. Cowell's Battery
2. Hassel Island, St. Thomas, U.S.V.I.
3. Bob Wands
4. December, 1975
5. P.O. Box 2084, St. Thomas, U.S.V.I.
6. Interior. Northeast
7. Wands #4 *wpd*

JUN 2 1976

JUL 19 1976



1. Northern Hassel Island Historic District-
Fort Shipley
2. St. Thomas, U.S.V.I.
3. Russell Wright
4. May 7, 1977
5. V.I. Planning Office
P.O. Box 2606
St. Thomas, Virgin Islands 00801
6. Northwest
7. Photograph number -1 8 14 ~~8~~ 17

AUG 15 1977

AUG 29 1978



1. Northern Hassel Island Historic District-
Fort Shipley
2. St. Thomas, U.S. Virgin Islands
3. Russell Wright
4. May 7, 1977
5. V.I. Planning Office
P.O. Box 2606
St. Thomas, Virgin Islands 00801
6. East
7. Photograph number -2 ~~874~~ 17

AUG 29 1978

AUG 15 1977



1. Northern Hassel Island Historic District-For Shipley
2. St. Thomas, U.S.V.I.
3. Russell Wright
4. May 7, 1977
5. V.I. Planning Office
P.O. Box 2606
St. Thomas, Virgin Islands 00801
6. South
7. Photograph number - 3 2417

AUG 29 1978

AUG 15 1977



1. Northern Hassel Islands Historic District-
Fort Shipley
2. St. Thomas, U.S. Virgin Islands
3. Russell Wright
4. May 7, 1977
5. V.I. Planning Office
P.O. Box 2606
St. Thomas, Virgin Islands 00801
6. Northwest
7. Photograph number -4 ¹⁷~~14~~

AUG 29 1978

AUG 15 1977



1. Northern Hassel Island Historic District-
Creque's Marine Railway, Winch House-
Residence
2. St. Thomas, U.S. Virgin Islands
3. Russell Wright
4. May 7, 1977
5. V.I. Planning Office
P.O. Box 2606
St. Thomas, Virgin Islands
6. Interior
7. Photograph number - 6 ⁶⁷ ~~14~~

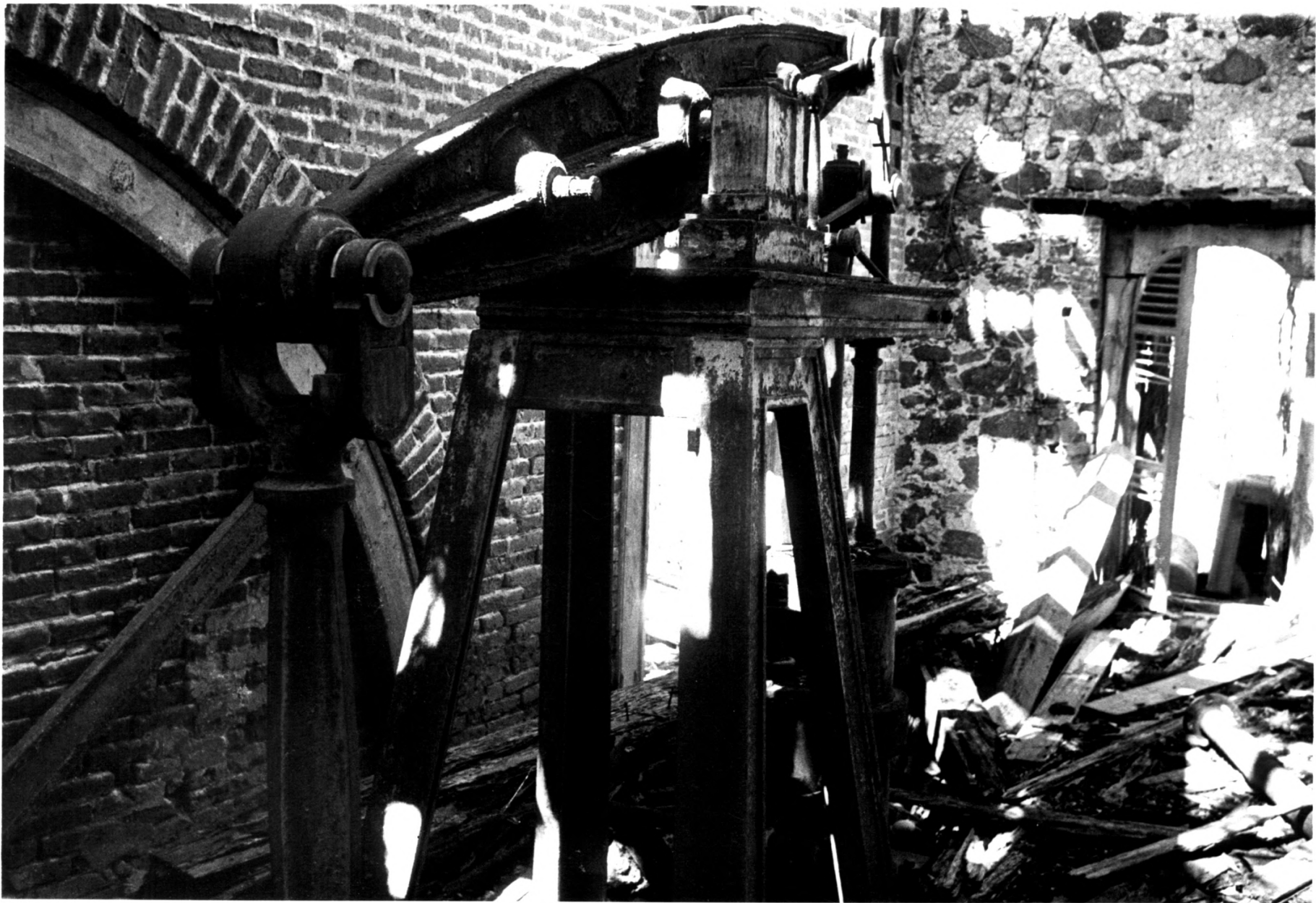
AUG 29 1978

AUG 15 1977



1. Northern Hassel Island Historic District-
Creque's Marine Railway, Winch House and
Residence
2. St. Thomas, U.S. Virgin Islands
3. Russell Wright
4. May 4, 1977
5. V.I. Planning Office
P.O. Box 2606
St. Thomas, Virgin Islands 00801
6. Interior-winch room
7. Photograph number - 7

17
817 AUG 20 1978
AUG 15 1977



1. Northern Hassel Island Historic District
Creque's Marine Railway, Winch House and
Residence
2. St. Thomas, U.S. Virgin Islands
3. Russell Wright
4. May 4, 1977
5. V.I. Planning Office
P.O. Box 2606
St. Thomas, Virgin Islands 00801
6. Interior
7. Photograph number - 8 ~~A#~~ 17

AUG 25 1978

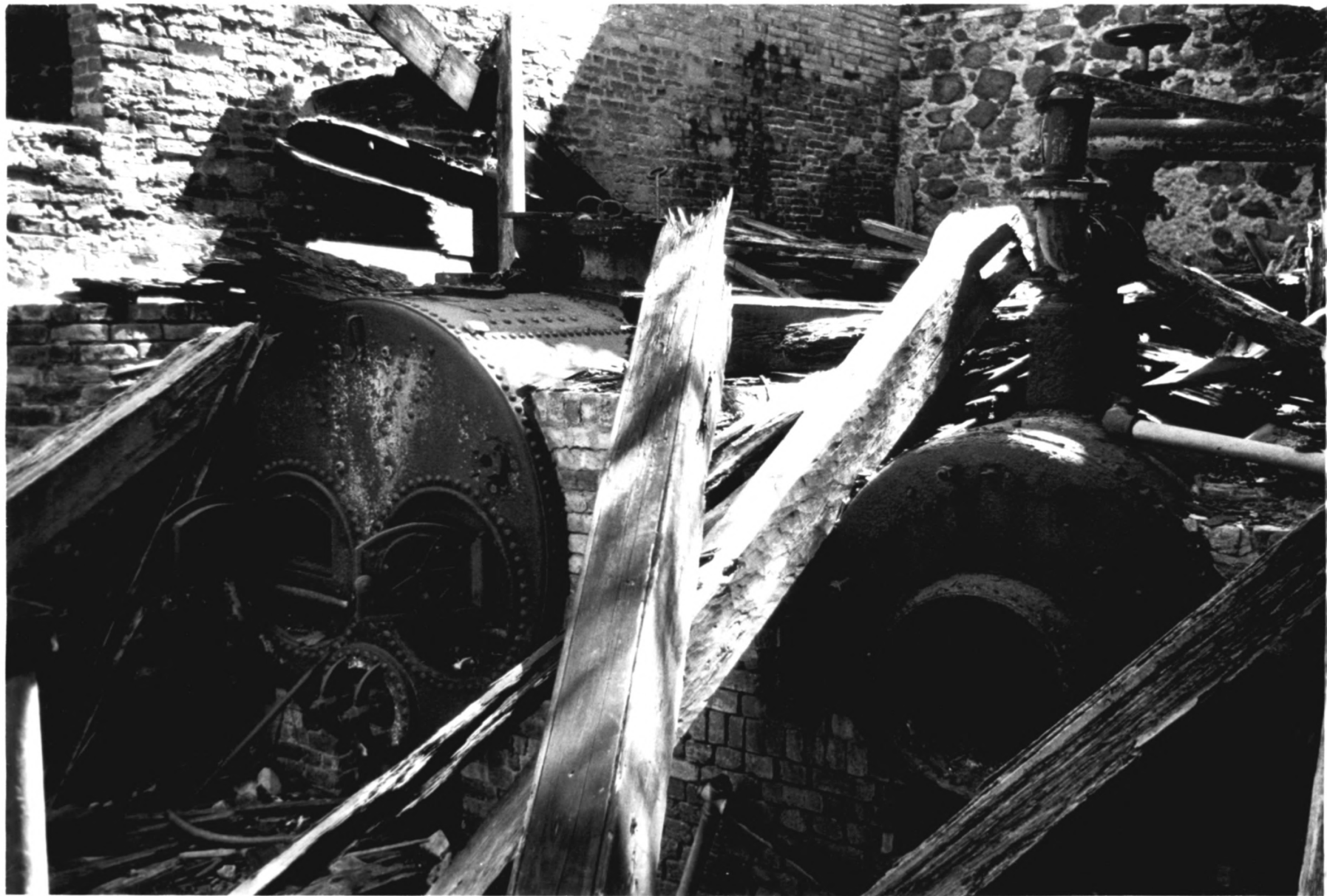
AUG 15 1977



1. Northern Hassel Island Historic District-
Creque's Marine Railway, Winch House and
Residence
2. St. Thomas, U.S. Virgin Islands
3. Russell Wright
4. May 7, 1977
5. V.I. Planning Office
P.O. Box 2606
St. Thomas, Virgin Islands
6. Interior-winch room
7. Photograph number - 9¹⁷~~8~~

AUG 29 1978

AUG 15 1977



1. Northern Hassel Island Historic District-
Creque's Marine Railway, Winch House
and Residence
2. St. Thomas, U.S. Virgin Islands
3. Russell Wright
4. May 7, 1977
5. V.I. Planning Office
P.O. Box 2606
St. Thomas, Virgin Islands 00801
6. Interior-engine room
7. Photograph number - 10 ~~14~~ 17

AUG 29 1978

AUG 15 1977



1. Northern Hassel Island Historic District-
Creque's Marine Railway, Winch House-
Residence
2. St. Thomas, U.S. Virgin Islands
3. Russell Wright
4. May 7, 1977
5. V.I. Planning Office
P.O. Box 2606
St. Thomas, Virgin Islands 00801
6. Northeast
7. Photograph number - 11 ¹⁷ ~~84~~ AUG 29 1978

AUG 15 1977



1. Northern Hassel Island Historic District-
Creque's Marine Railway, Cistern
2. St. Thomas, U.S. Virgin Islands
3. Russell Wright
4. May 4, 1977
5. V.I. Planning Office
P.O. Box 2606
St. Thomas, U.S. Virgin Islands 00801
6. East
7. Photograph number - 12 ¹⁷~~94~~

AUG 29 1978

AUG 15 1977



1. Northern Hassel Island Historic District-
St. Thomas Dock, Engineering and Coaling
Company, Ltd., Warehouse
2. St. Thomas, U.S. Virgin Islands
3. Russell Wright
4. May 7, 1977
5. V.I. Planning Office
P.O. Box 2606
St. Thomas, Virgin Islands 00801
6. Northwest
7. Photograph number - 13 ¹⁷~~874~~

AUG 23 1978

AUG 15 1977



1. Northern Hassel Island Historic District-
Hamburg American Line, Cistern
2. St. Thomas, U.S. Virgin Islands
3. Russell Wright
4. May 7, 1977
5. V.I. Planning Office
P.O. Box 2606
St. Thomas, Virgin Islands 00801
6. Northeast
7. Photograph number - 14 ¹⁷~~14~~

AUG 29 1978

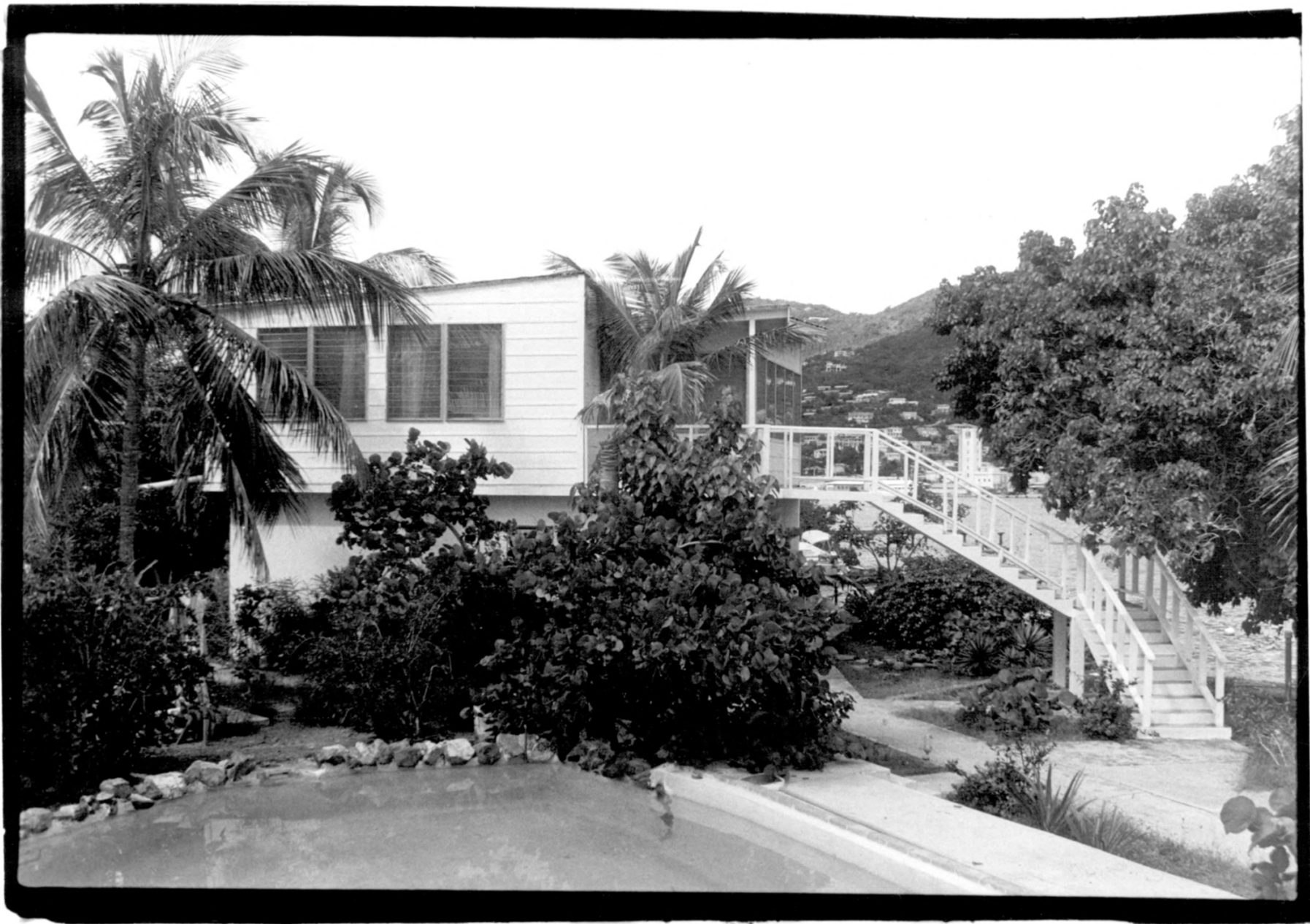
AUG 15 1977



1. Creque Marine Railway, Northern
Hassel Island Historic District
2. St. Thomas, V.I.
3. Annie Hillary
4. January 9, 1978
5. V.I. Planning Office
P.O. Box 2606
St. Thomas, Virgin Islands 00801
6. West
7. 15 a 17

AUG 29 1978





1. Royal Mail Hotel, Northern
Hassel Island Historic District
2. St. Thomas, U.S.V.I.
3. Annie Hillary
4. January 9, 1978
5. V.I. Planning Office
P.O. Box 2606
St. Thomas, Virgin Islands 00801
6. N.W.
7. 16917



AUG 29 1978



1. Royal Mail Hotel, Northern
Hassel Island Historic District
2. St. Thomas, U.S.V.I.
3. Annie Hillary
4. January 9, 1978
5. V.I. Planning Office
P.O. Box 2606
ST. Thomas, Virgin Islands 00801
6. N.W.
7. 17 8 17



AUG 29 1978