

United States Department of the Interior
National Park Service

RECEIVED

SEP 08 1993

National Register of Historic Places
Registration Form

This form is for use in nominating or requesting determinations for individual properties and districts. See instructions in *How to Complete the National Register of Historic Places Registration Form* (National Register Bulletin 16A). Complete each item by marking "x" in the appropriate box or by entering the information requested. If an item does not apply to the property being documented, enter "N/A" for "not applicable." For functions, architectural classification, materials, and areas of significance, enter only categories and subcategories from the instructions. Place additional entries and narrative items on continuation sheets (NPS Form 10-900a). Use a typewriter, word processor, or computer, to complete all items.

1. Name of Property

historic name Montegut School

other names/site number Montegut Elementary School

2. Location

street & number 1137 LA Hwy 55 N/A not for publication

city or town Montegut N/A vicinity

state Louisiana code LA county Terrebonne code 109 zip code 70377

3. State/Federal Agency Certification

As the designated authority under the National Historic Preservation Act, as amended, I hereby certify that this nomination request for determination of eligibility meets the documentation standards for registering properties in the National Register of Historic Places and meets the procedural and professional requirements set forth in 36 CFR Part 60. In my opinion, the property meets does not meet the National Register criteria. I recommend that this property be considered significant nationally statewide locally. (See continuation sheet for additional comments.)

Gerri Hobdy 9/3/93
 Signature of certifying official/Title Date
Gerri Hobdy, Louisiana SHPO, Department of Culture, Recreation and Tourism
 State of Federal agency and bureau

In my opinion, the property meets does not meet the National Register criteria. (See continuation sheet for additional comments.)

 Signature of certifying official/Title Date

 State or Federal agency and bureau

4. National Park Service Certification

I hereby certify that the property is:

- entered in the National Register. See continuation sheet.
- determined eligible for the National Register See continuation sheet.
- determined not eligible for the National Register.
- removed from the National Register.
- other, (explain:)

Signature of the Keeper *Shelton Byrum* Date of Action 10/7/93

Entered in the National Register

Montegut School
Name of Property

Terrebonne Parish, LA
County and State

5. Classification

Ownership of Property
(Check as many boxes as apply)

- private
- public-local
- public-State
- public-Federal

Category of Property
(Check only one box)

- building(s)
- district
- site
- structure
- object

Number of Resources within Property
(Do not include previously listed resources in the count.)

Contributing	Noncontributing	
1		buildings
		sites
		structures
		objects
1	0	Total

Name of related multiple property listing
(Enter "N/A" if property is not part of a multiple property listing.)

N/A

Number of contributing resources previously listed in the National Register

0

6. Function or Use

Historic Functions
(Enter categories from instructions)

EDUCATION/school

Current Functions
(Enter categories from instructions)

EDUCATION/school

7. Description

Architectural Classification
(Enter categories from instructions)

No style

Materials
(Enter categories from instructions)

foundation brick

walls weatherboard, stucco

roof asphalt

other _____

Narrative Description

(Describe the historic and current condition of the property on one or more continuation sheets.)

**United States Department of the Interior
National Park Service**

National Register of Historic Places Continuation Sheet

Montegut School, Terrebonne Parish, LA

Section number 7 Page 1

The Montegut School (1912) is a two-story frame vernacular structure. Although it displays a slight classical influence, it cannot be attributed to a specific style. The building faces Bayou Terrebonne and LA Highway 55, which is the main street of the small rural Terrebonne Parish community of Montegut. Although the school has undergone some alteration since its construction, it remains eligible for National Register listing.

The school's classically influenced features include the organization of its facade, the treatment of the area around the entrance, and the existence of an entablature. The facade features a three part articulation, with the two end sections projecting slightly. The entrance is surmounted by a segmentally arched transom, and the door and transom are framed within a molded surround. A rectangular molded panel displaying the school's name is attached to the facade directly above this entrance, and a simple entablature encircles the building at roof level. The facade's other interesting feature is its fenestration. Each end section is pierced by a band of four windows. The central section is pierced by two, three window bands, with one on each side of the entrance. Both the transom and a rectangular window above the decorative panel have lights subdivided into diamond patterns. The roof is characterized by overhanging eaves. The main roof consists of a horizontal hip, while each projecting end section has its own pyramidal roof.

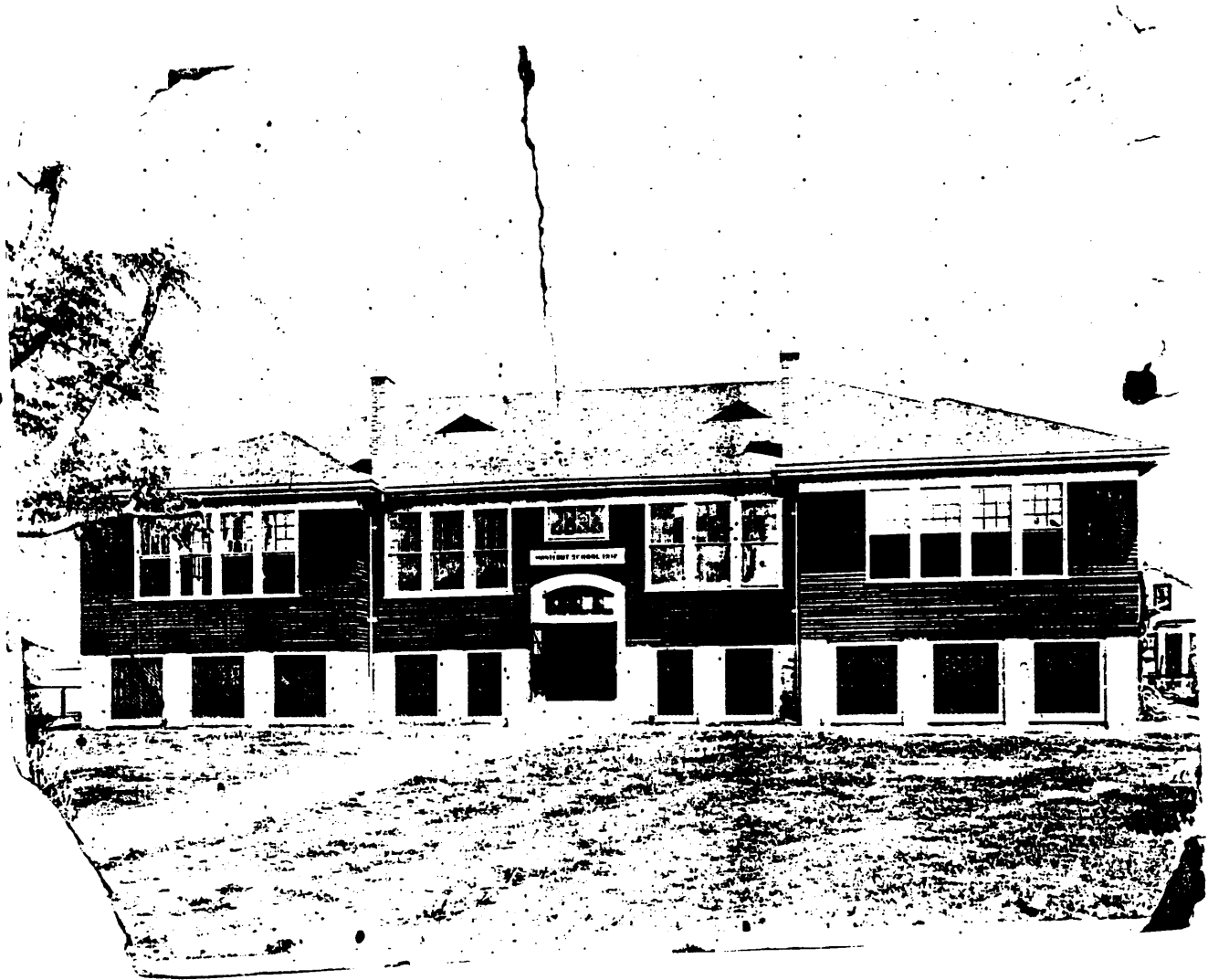
The school was originally raised a full story on heavy piers, with the open space beneath screened by latticework. The entrance opened directly onto a staircase which ascended to a hallway. These stairs were flanked by a library and an office. An auditorium extended beyond the main mass to form a rear wing. Four classrooms with accompanying cloakrooms stood in the building's corners. This floorplan remained unchanged until 1937 or 1938, when the auditorium was enlarged at the rear and a classroom was added at each of the auditorium's rear corners. The space beneath the building was enclosed and utilized around 1946. A third expansion occurred in 1954, when a two story wing with three classrooms per floor was constructed behind the 1938 addition. As a result of these expansions, the building now has an "H" shaped footprint (see attached floorplan). Other changes include the conversion of the attic vents into dormers; the loss of the building's original front doors and chimneys; and the modernization of the interior with paneling, tile floors, and dropped acoustical tile ceilings.

Despite these changes, the Montegut School retains sufficient integrity for recognition by the National Register. The expansions occurred at the rear and replicated the look and materials of the original. Although the building was open on its lower level for a number of years, its original latticework panels suggested enclosure, as can be seen in a historic photograph. Except for this change and the lost doors, the facade remains virtually intact; and any student from the historic period would easily recognize the building. The Montegut School is a symbol of the "coming of age" of education in lower Terrebonne Parish and, as such, is a strong candidate for National Register listing.

**United States Department of the Interior
National Park Service**

National Register of Historic Places Continuation Sheet

Montegut School, Terrebonne Parish, LA
Section number 7 Page 2



8. Statement of Significance

Applicable National Register Criteria

(Mark "x" in one or more boxes for the criteria qualifying the property for National Register listing.)

- A** Property is associated with events that have made a significant contribution to the broad patterns of our history.
- B** Property is associated with the lives of persons significant in our past.
- C** Property embodies the distinctive characteristics of a type, period, or method of construction or represents the work of a master, or possesses high artistic values, or represents a significant and distinguishable entity whose components lack individual distinction.
- D** Property has yielded, or is likely to yield, information important in prehistory or history.

Criteria Considerations

N/A

(Mark "x" in all the boxes that apply.)

Property is:

- A** owned by a religious institution or used for religious purposes.
- B** removed from its original location.
- C** a birthplace or grave.
- D** a cemetery.
- E** a reconstructed building, object, or structure.
- F** a commemorative property.
- G** less than 50 years of age or achieved significance within the past 50 years.

Areas of Significance

(Enter categories from instructions)

Education

Period of Significance

1912

Significant Dates

1912

Significant Person

(Complete if Criterion B is marked above)

N/A

Cultural Affiliation

N/A

Architect/Builder

unknown

Narrative Statement of Significance

(Explain the significance of the property on one or more continuation sheets.)

9. Major Bibliographical References

Bibliography

(Cite the books, articles, and other sources used in preparing this form on one or more continuation sheets.)

Previous documentation on file (NPS): N/A

- preliminary determination of individual listing (36 CFR 67) has been requested
- previously listed in the National Register
- previously determined eligible by the National Register
- designated a National Historic Landmark
- recorded by Historic American Buildings Survey # _____
- recorded by Historic American Engineering Record # _____

Primary location of additional data:

- State Historic Preservation Office
- Other State agency
- Federal agency
- Local government
- University
- Other

Name of repository:

Montegut School
Name of Property

Terrebonne Parish, LA
County and State

10. Geographical Data

Acreage of Property 1.4 acres

UTM References

(Place additional UTM references on a continuation sheet.)

1

1	5
---	---

7	3	7	0	2	0
---	---	---	---	---	---

3	2	6	3	2	0	0
---	---	---	---	---	---	---

Zone Easting Northing

3

--	--

--	--	--	--	--	--

--	--	--	--	--	--	--	--

Zone Easting Northing

See continuation sheet

Verbal Boundary Description

(Describe the boundaries of the property on a continuation sheet.)

Please refer to property plat map.

Boundary Justification Boundaries follow property lines of parcel of land upon which school (Explain why the boundaries were selected on a continuation sheet.) is located.

11. Form Prepared By

name/title National Register Staff

organization Division of Historic Preservation date July 1993

street & number P. O. Box 44247 telephone (504) 342-8160

city or town Baton Rouge state Louisiana zip code 70804

Additional Documentation

Submit the following items with the completed form:

Continuation Sheets

Maps

A **USGS map** (7.5 or 15 minute series) indicating the property's location.

A **Sketch map** for historic districts and properties having large acreage or numerous resources.

Photographs

Representative **black and white photographs** of the property.

Additional items

(Check with the SHPO or FPO for any additional items)

Property Owner

(Complete this item at the request of SHPO or FPO.)

name Terrebonne Parish School Board School Board: (504) 876-7400

street & number 201 Stadium Drive telephone School: (504) 594-3657

city or town Houma state Louisiana zip code 70360

Paperwork Reduction Act Statement: This information is being collected for applications to the National Register of Historic Places to nominate properties for listing or determine eligibility for listing, to list properties, and to amend existing listings. Response to this request is required to obtain a benefit in accordance with the National Historic Preservation Act, as amended (16 U.S.C. 470 et seq.).

Estimated Burden Statement: Public reporting burden for this form is estimated to average 18.1 hours per response including time for reviewing instructions, gathering and maintaining data, and completing and reviewing the form. Direct comments regarding this burden estimate or any aspect of this form to the Chief, Administrative Services Division, National Park Service, P.O. Box 37127, Washington, DC 20013-7127; and the Office of Management and Budget, Paperwork Reductions Projects (1024-0018), Washington, DC 20503.

**United States Department of the Interior
National Park Service**

**National Register of Historic Places
Continuation Sheet**

Montegut School, Terrebonne Parish, LA

Section number 8 Page 1

The Montegut School is locally significant in the area of education because it represents the "coming of age" of the educational system in lower Terrebonne Parish.

Like the rest of rural Louisiana, Terrebonne Parish was slow in making free public education available to children. In the years following the Civil War the prevailing attitude was that education should be the responsibility of the family rather than of state or local government. As a result, there was very little money for education and no real public support. The few schools existing at this time were either church-sponsored or private affairs teaching only rudimentary skills such as reading, writing, and mathematics. In lower Terrebonne Parish where Montegut is located, this problem was compounded by the extreme remoteness of the area. Because it borders the Gulf of Mexico, Terrebonne is one of Louisiana's wetlands parishes. The settlements in its lower regions are far apart and separated by vast expanses of swampland. Early roads were especially poor, and for many years the only practical method of transportation was by boat via several area bayous.

As the turn of the century approached, a more positive attitude toward education began to develop in lower Terrebonne Parish. Organized by citizens who sponsored bazaars and other entertainments in order to raise funds, several local school associations erected small schools for area children. These one-room structures were usually crude, stark, unpainted, and improperly heated. They often lacked ceilings, and their furniture was generally homemade. Blackboards were usually placed between windows, forcing the students to look directly into a bright glare. Children of all ages and grades were accommodated in these buildings, making it extremely difficult for individual children to receive the attention necessary for a quality education. By 1905 the Montegut community had erected a "creditable" one-room school.

After 1905 two developments occurred which encouraged improvement in education. In 1906 Terrebonne Parish passed its first special tax in support of schools. This meant that the school board was able to match monies supplied by communities desiring better facilities. Then, in the 1910-1911 school year, the parish opened its first consolidated school. Consolidation was made possible because the parish implemented a state plan for the transport of students. However, due to local topography Terrebonne officials opted for the use of boats as well as the wagons used by other parishes for this purpose. Consolidated schools replaced the previous one-room schools as fast as the construction of new schools permitted.

The 1912 opening of the consolidated Montegut School brought a vast improvement in the quality of education received by the children of lower Terrebonne Parish. The new facility had a library, office, auditorium, four classrooms with accompanying cloakrooms, and modern furniture appropriate to a school. For the first time area students could be separated by age and educational level, and teachers were not allowed to instruct more than two grades. Consolidation encouraged better attendance, eliminated tardiness, and opened the children's previously limited horizons to the

CONTINUED

**United States Department of the Interior
National Park Service**

**National Register of Historic Places
Continuation Sheet**

Montegut School, Terrebonne Parish, LA

Section number 8 Page 2

outside world by transporting them beyond their immediate neighborhoods. Finally, as one of the earliest consolidated schools in rural Terrebonne Parish, the Montegut School inspired other villages within the parish to provide similar facilities to educate their children. Thus, as a symbol of education's "coming of age" in lower Terrebonne Parish, the Montegut School is a strong candidate for National Register listing.

**United States Department of the Interior
National Park Service**

**National Register of Historic Places
Continuation Sheet**

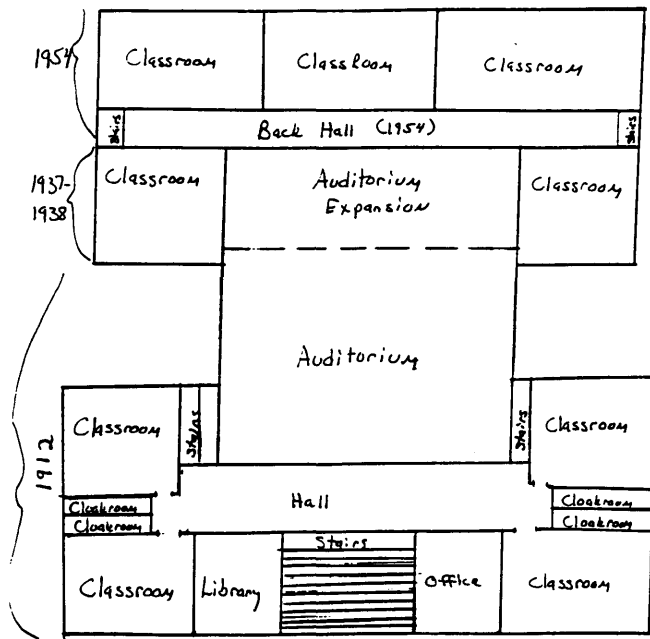
Montegut School, Terrebonne Parish, LA

Section number 9 Page 1

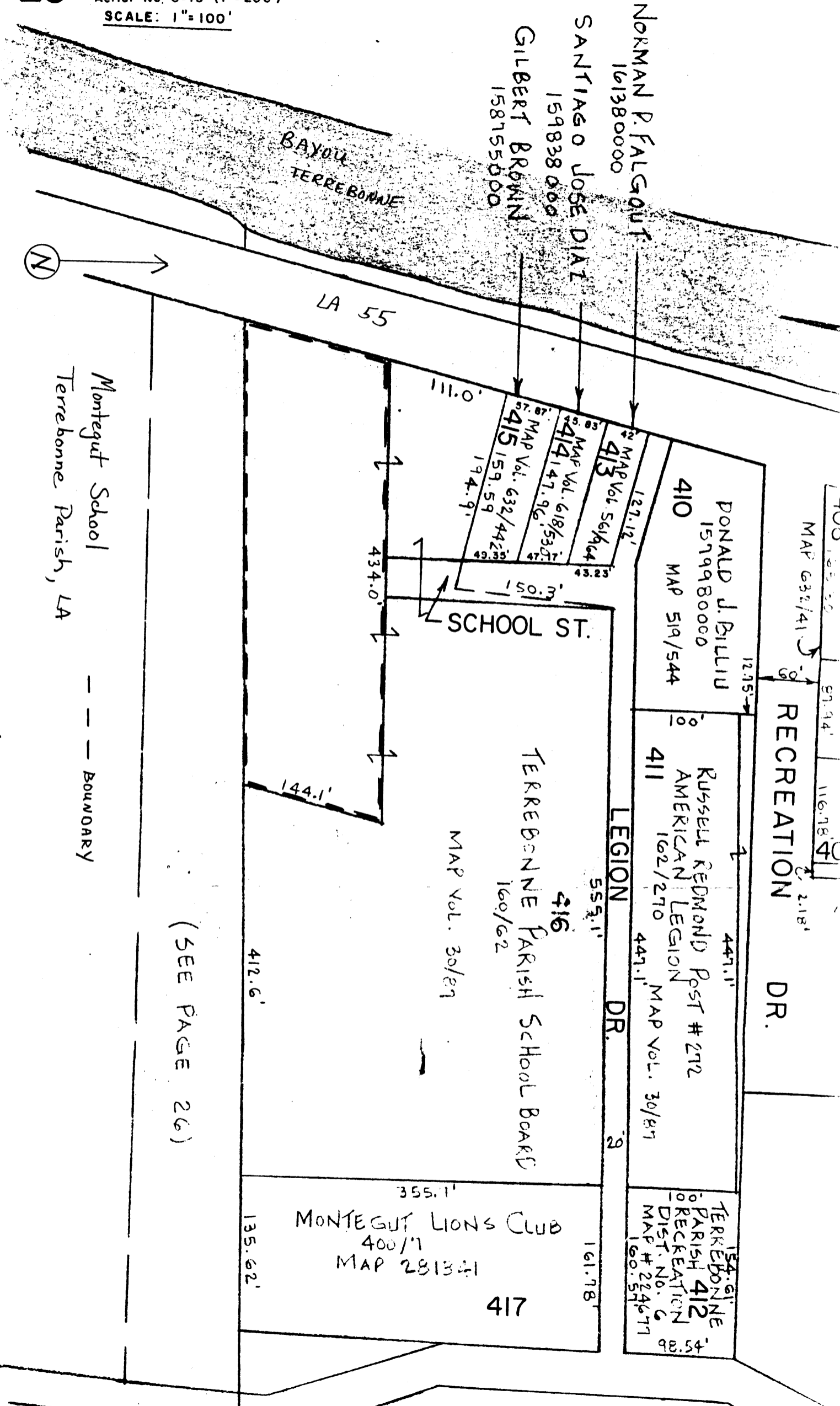
BIBLIOGRAPHY

Bourgeois, Henry L. "Four Decades of Public Education in Terrebonne Parish." M.A. thesis,
Louisiana State University, 1938.

Minutes of the Terrebonne Parish School Board, 1912-1947. (Copies and excerpts from pertinent
pages in National Register file.)



Montegut School
Terrebonne Parish, LA



TWO 185.20' 57.94' 116.18' 2.18'

MAP 632/41

RECREATION DR.

Montegut School
Terrebonne Parish, LA

--- BOUNDARY

(SEE PAGE 26)