



1640 PLANT/SANTA CLARA HYDROS HIST. DIST
POWERHOUSE
R14F29

PHOTO NO. 1



VEYO PLANT/SANTA CLARA HYDROS HIST. DIST.

R14 F 32

PHOTO NO. 2



VEY O PLANT
POWERHOUSE

RIA F 30

SANTA CLARA HYDROS
HIST. DIST.

PHOTO NO. 3



SANTA CLARA HYDROS HIST DIST.
UPPER SAND COVE
DAM & RESERVOIR

PHOTO NO. 4

R 15 F 19



SANTA CLARA HYDROS HIST. DIST.
UPPER SAND COVE
RES & DAM

PHOTO # 5

R15 F20



SAND COVE PLANT
POWER HOUSE

R15 F15

SANTA CLARA HYDROS
HIST. DIST.

PHOTO No. 6



SANDCOVE PLANT
POWERHOUSE
RIS F 13

SANTA CLARA HYDROS
HIST. DIST.

PHOTO # 7



SAND COVE PLANT

PENSTOCK

SANTA CLARA HYDROS
HIST. DIST.

R15 F 12

PHOTO # 8

Wash



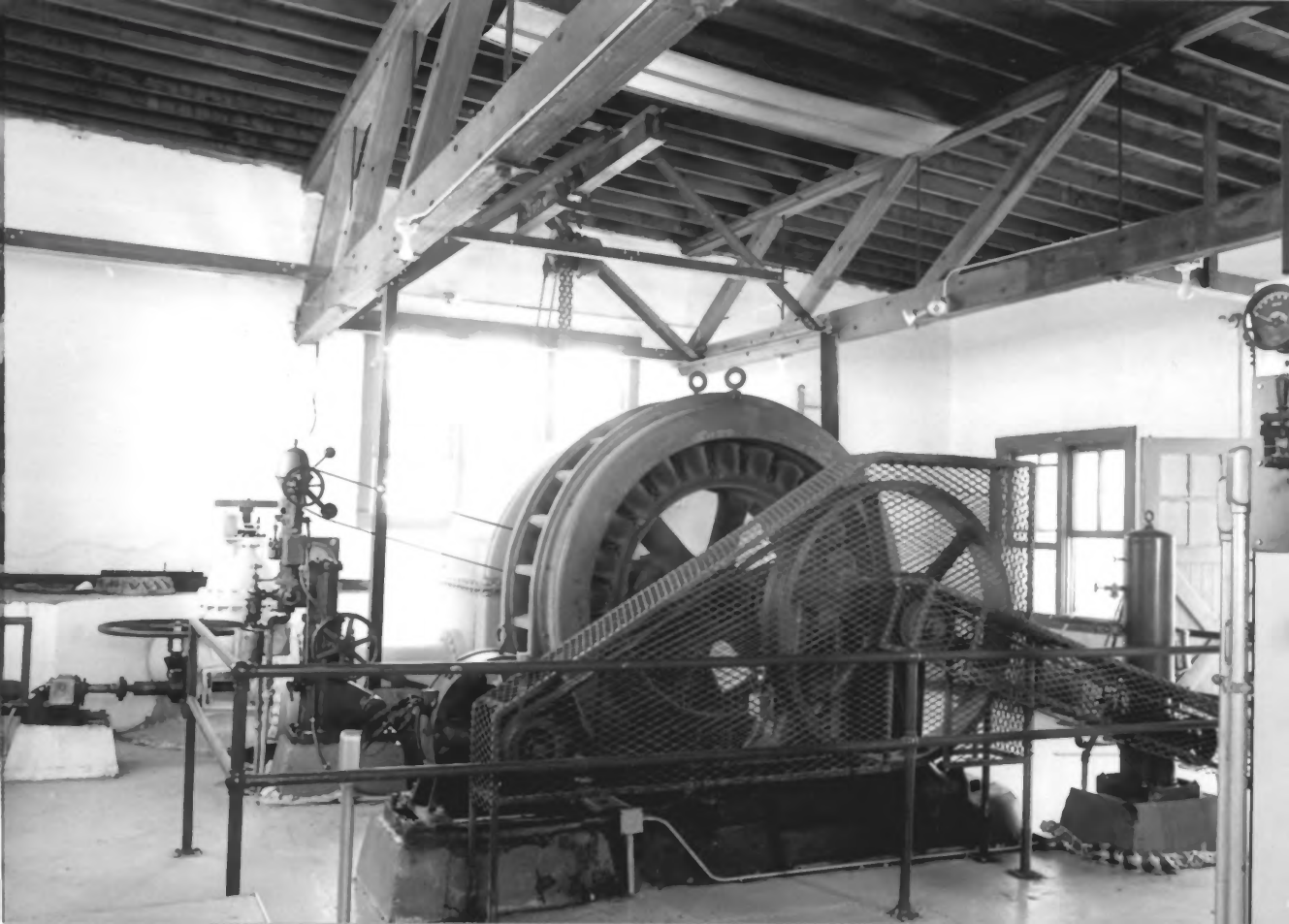
SANDCOVE PLANT
POWER HOUSE

R 15 F 12

SANTA CLARA HYDROS
HIST. DIST

PHOTO # 9

Washington County VT



SAND COVE PLANT
GENERATOR
R15 F14

SANTA CLARA HYDROS
HUST. DUST.

PHOTO # 10

Washington County UT



LOWER SAND COVE
DAM & RESERVOIR

R 15 F 10

SANTA CLARA HYDROS
HIST. DIST.

PHOTO # 11

Washington County UT



UNited

Gunlock Plant

utah power
Electric Energy

NO
TRESPASSING

GUNLOCK PLANT

POWER HOUSE

R14 F36

SANTA CLARA HYDROS
HIST. DIST.

P
PHOTO # 12

Washington County UT



DANGER
HIGH VOLTAGE

GUNLOCK PLANT

POWER HOUSE

R 15 F 2

SANTA CLARA HYDROS
HIST. DIST.

PHOTO # 13

Washington County, UT



GUNLOCK PLANT
PENSTOCK & POWER HOUSE

R 15 F 6

SANTA CLARA HYDROS
HIST. DIST.

PHOTO # 14



GUNLOCK PLANT

ADOBE ANULLARY STRUCTURE

R15 F3

SANTA CLARA HYDROS

HIST. DIST

PHOTO # 15