

United States Department of the Interior
National Park Service

National Register of Historic Places
Registration Form

RECEIVED

SEP 08 1993

NATIONAL
REGISTER

This form is for use in nominating or requesting determinations for individual properties and districts. See instructions in *How to Complete the National Register of Historic Places Registration Form* (National Register Bulletin 16A). Complete each item by marking "x" in the appropriate box or by entering the information requested. If an item does not apply to the property being documented, enter "N/A" for "not applicable." For functions, architectural classification, materials, and areas of significance, enter only categories and subcategories from the instructions. Place additional entries and narrative items on continuation sheets (NPS Form 10-900a). Use a typewriter, word processor, or computer, to complete all items.

1. Name of Property

historic name Hanson Lumber Company Office

other names/site number _____

2. Location

street & number 10400 LA Hwy 182 N/A not for publication

city or town Garden City N/A vicinity

state Louisiana code LA county St. Mary code 101 zip code 70540

3. State/Federal Agency Certification

As the designated authority under the National Historic Preservation Act, as amended, I hereby certify that this nomination request for determination of eligibility meets the documentation standards for registering properties in the National Register of Historic Places and meets the procedural and professional requirements set forth in 36 CFR Part 60. In my opinion, the property meets does not meet the National Register criteria. I recommend that this property be considered significant nationally statewide locally. (See continuation sheet for additional comments.)
Jon Fricker August 31, 1993
Signature of certifying official/Title Jonathan Fricker, Deputy SHPO, Dept of Culture, Recreation and Tourism Date
State of Federal agency and bureau _____

In my opinion, the property meets does not meet the National Register criteria. (See continuation sheet for additional comments.)

Signature of certifying official/Title Date

State or Federal agency and bureau

4. National Park Service Certification

I hereby certify that the property is:
 entered in the National Register. See continuation sheet.
 determined eligible for the National Register See continuation sheet.
 determined not eligible for the National Register.
 removed from the National Register.
 other, (explain:)

Signature of the Keeper Delores Byrum Date of Action 10/7/93
Entered in the National Register

5. Classification

Ownership of Property
(Check as many boxes as apply)

- private
- public-local
- public-State
- public-Federal

Category of Property
(Check only one box)

- building(s)
- district
- site
- structure
- object

Number of Resources within Property
(Do not include previously listed resources in the count.)

Contributing	Noncontributing	
1	1	buildings
		sites
		structures
		objects
1	1	Total

Name of related multiple property listing
(Enter "N/A" if property is not part of a multiple property listing.)

N/A

Number of contributing resources previously listed in the National Register

0

6. Function or Use

Historic Functions
(Enter categories from instructions)

COMMERCE/TRADE: business

Current Functions
(Enter categories from instructions)

DOMESTIC/single dwelling

7. Description

Architectural Classification
(Enter categories from instructions)

no style

Materials
(Enter categories from instructions)

foundation brick

walls weatherboard

roof metal

other

Narrative Description

(Describe the historic and current condition of the property on one or more continuation sheets.)

**United States Department of the Interior
National Park Service**

**National Register of Historic Places
Continuation Sheet**

Hanson Lumber Company Office, Garden City, St. Mary Parish, LA

Section number 7 Page 1

The Albert Hanson Lumber Company Office (c.1900) is a large two story galleried building constructed of cypress. It is located in the heart of the former sawmill town of Garden City. Although the building makes a rather grand statement and is nicely detailed, it does not fit easily into any style category. Hence, the term "no style" is being used in the architectural classification section of this form. Alterations have been minimal.

The Hanson Lumber Company Office has two important elevations. The one now considered the rear was historically the front because it faced the sawmill. The present front elevation faces what is left of the sawmill town built by Mr. Hanson. Each facade has a colossal order gallery beneath a flared roof extending from the main hipped roof. Neither extends the complete width of the building, with the one on the present rear being the narrower of the two. The columns are fluted and the capitals are most unusual, featuring a typical Doric capital surmounted by a block capital with curved cuts and a molded top. They are unevenly spaced on the present rear to allow for the main entrance. Pilasters define the edges of the galleries. Incorporated into each gallery is a full width cantilevered balcony. Windows are two over two.

The off-center main entrances (front and rear) are set in recessed polygonal alcoves. They open into the building's most impressive interior space, an octagonal rotunda with a steep spiral staircase at its center. The rotunda on both floors feature a heavy multi-layer cornice with a decorative bracket at each corner. Below each bracket is a strip of wood extending to the high wainscot encircling the room. The wainscot is formed of beaded board vertical members with horizontal burl panels above.

To the east of the rotunda on the ground floor is the company's office space which extends from the front to the back of the building. (See attached floor plan.) When the present owners acquired the building for use as their home, they removed the built-in counters and other office accoutrements. However, a "pay door" survives. Located on the elevation which originally faced the mill, it features a ledge for conducting business and a sliding panel which opens to reveal a grated window.

CONTINUED

**United States Department of the Interior
National Park Service**

**National Register of Historic Places
Continuation Sheet**

Hanson Lumber Company Office, Garden City, St. Mary Parish, LA

Section number 7 Page 2

A 12 foot by 12 foot brick vault is beyond the east wall of the office. A small room is located on either side with a narrow passageway between the two behind the vault. To the west of the rotunda are three rooms and a bathroom. The bathroom contains a very tight spiral staircase. The floorplan on the second floor is similar, with the principal difference being that the area above the office is divided into three spaces. A second large vault is located directly above the one downstairs. Between the two is a storage space reached via a trap door.

The interior has flush board walls and ceilings. The building's numerous doors (32) have frames with bull's eye cornerblocks typical of the period. The paneled doors are more unusual, featuring a combination of squares and vertically and horizontally placed rectangles.

Alterations:

All alterations occurred within the last few years when the building was converted into a private residence. They are as follows:

(1) As previously indicated, the built-in office counters, etc. were removed.

(2) A brick fireplace was added to the rear wall of the former office. The chimney is a relatively unobtrusive metal pipe. (Originally the building was heated with stoves.)

(3) Some rooms have been wallpapered, and the ceiling in the rotunda on the ground floor has been covered with textured wallpaper.

(4) A staircase has been added in a second floor ancillary space to provide access to the attic.

(5) Latticework panels were placed above roughly six foot shelves which separated two second floor rooms.

CONTINUED

**United States Department of the Interior
National Park Service**

**National Register of Historic Places
Continuation Sheet**

Hanson Lumber Company Office, Garden City, St. Mary Parish, LA

Section number 7 Page 3

Assessment of Integrity:

Because alterations have been minimal, there is no question that someone from the historic period would recognize the Hanson Lumber Company Office. Except for the metal pipe chimney, the exterior is unchanged, and even the interior survives largely intact.

Non-contributing Element:

Also located within the nominated acreage is a frame shed. Although quite possibly contemporaneous with the office, it is being counted as a non-contributing element because of the large metal addition it has received.

8. Statement of Significance

Applicable National Register Criteria

(Mark "x" in one or more boxes for the criteria qualifying the property for National Register listing.)

- A** Property is associated with events that have made a significant contribution to the broad patterns of our history.
- B** Property is associated with the lives of persons significant in our past.
- C** Property embodies the distinctive characteristics of a type, period, or method of construction or represents the work of a master, or possesses high artistic values, or represents a significant and distinguishable entity whose components lack individual distinction.
- D** Property has yielded, or is likely to yield, information important in prehistory or history.

Criteria Considerations N/A
(Mark "x" in all the boxes that apply.)

Property is:

- A** owned by a religious institution or used for religious purposes.
- B** removed from its original location.
- C** a birthplace or grave.
- D** a cemetery.
- E** a reconstructed building, object, or structure.
- F** a commemorative property.
- G** less than 50 years of age or achieved significance within the past 50 years.

Narrative Statement of Significance

(Explain the significance of the property on one or more continuation sheets.)

9. Major Bibliographical References

Bibliography

(Cite the books, articles, and other sources used in preparing this form on one or more continuation sheets.)

Previous documentation on file (NPS):

- preliminary determination of individual listing (36 CFR 67) has been requested
- previously listed in the National Register
- previously determined eligible by the National Register
- designated a National Historic Landmark
- recorded by Historic American Buildings Survey # _____
- recorded by Historic American Engineering Record # not available from HAER

Areas of Significance

(Enter categories from instructions)

industry

Period of Significance

c. 1900-1943

Significant Dates

N/A

Significant Person

(Complete if Criterion B is marked above)

N/A

Cultural Affiliation

N/A

Architect/Builder

unknown

Primary location of additional data:

- State Historic Preservation Office
- Other State agency
- Federal agency
- Local government
- University
- Other

Name of repository:

Hanson Lumber Company Office
Name of Property

St. Mary Parish, LA
County and State

10. Geographical Data

Acreeage of Property less than one acre

UTM References

(Place additional UTM references on a continuation sheet.)

1

1	5
---	---

6	4	8	2	8	0
---	---	---	---	---	---

3	2	9	3	6	2	0
---	---	---	---	---	---	---

2

--	--

--	--	--	--	--	--

--	--	--	--	--	--	--

3

--	--

--	--	--	--	--	--

--	--	--	--	--	--	--

4

--	--

--	--	--	--	--	--

--	--	--	--	--	--	--

See continuation sheet

Verbal Boundary Description

(Describe the boundaries of the property on a continuation sheet.)

Please refer to enclosed property plat map.

Boundary Justification Boundaries follow the property lines of the parcel of land upon which (Explain why the boundaries were selected on a continuation sheet.) the nominated resource is located.

11. Form Prepared By

name/title National Register Staff

organization Division of Historic Preservation date July 1993

street & number P. O. Box 44247 telephone (504) 342-8160

city or town Baton Rouge state Louisiana zip code 70804

Additional Documentation

Submit the following items with the completed form:

Continuation Sheets

Maps

A **USGS map** (7.5 or 15 minute series) indicating the property's location.

A **Sketch map** for historic districts and properties having large acreage or numerous resources.

Photographs

Representative **black and white photographs** of the property.

Additional items

(Check with the SHPO or FPO for any additional items)

Property Owner

(Complete this item at the request of SHPO or FPO.)

name Mr. and Mrs. Wilfred E. Peltier, Jr.

street & number P. O. Box 75 telephone (318) 828-5750

city or town Garden City state LA zip code 70540

Paperwork Reduction Act Statement: This information is being collected for applications to the National Register of Historic Places to nominate properties for listing or determine eligibility for listing, to list properties, and to amend existing listings. Response to this request is required to obtain a benefit in accordance with the National Historic Preservation Act, as amended (16 U.S.C. 470 *et seq.*)

Estimated Burden Statement: Public reporting burden for this form is estimated to average 18.1 hours per response including time for reviewing instructions, gathering and maintaining data, and completing and reviewing the form. Direct comments regarding this burden estimate or any aspect of this form to the Chief, Administrative Services Division, National Park Service, P.O. Box 37127, Washington, DC 20013-7127; and the Office of Management and Budget, Paperwork Reductions Projects (1024-0018), Washington, DC 20503.

**United States Department of the Interior
National Park Service**

**National Register of Historic Places
Continuation Sheet**

Hanson Lumber Company Office, Garden City, St. Mary Parish, LA

Section number 8 Page 1

The Hanson Lumber Company Office is of state significance in the area of industry because it is one of a limited number of resources left to directly represent the great Louisiana lumber boom. The period of significance spans from c.1900, the date of construction, to 1943, the fifty year cutoff for significance. The building served as the lumber company office until the 1950s, and the lumber industry remained an important force in the state past the fifty year cutoff.

Industrial lumbering was one of the major historic forces in the development of Louisiana, and indeed the entire South. In fact, it was about the only bright spot in an otherwise weak post-Civil War economy. Until the 1880s, Louisiana's vast forests were largely untouched. It was then that large-scale industrial lumbering began in earnest. During the so-called "Golden Years" of the Louisiana lumber boom (c.1905-c.1925), 4.3 million acres of timber were cut, with Louisiana consistently ranking second in the nation in production.

With the lumber, and the money made from lumbering, Louisianians embarked upon a furious pace of building. Indeed, much of the state's building stock dates from the heyday of lumbering. Thus, in a general sense, the Queen Anne Revival cottages and bungalows found in many towns represent the lumber boom and what it did to the state. These are its largest, although not its most important legacy. More important are the relatively small number of cultural resources directly associated with the industrial production of lumber. These include lumber company towns, company commissaries, owners' and managers' houses, and company built public buildings such as schools and churches.

Unfortunately, very few lumber boom related resources survive compared to the number that once existed. In many cases lumber company buildings were dismantled and moved out of the state when the timber played out. In other cases buildings in abandoned lumber communities simply collapsed after years of neglect. It should be emphasized that the Louisiana landscape was dotted with sawmills during the "golden years" of industrial lumbering. For example, there were over seventy sawmills within a forty mile radius of Alexandria. There were also scores of company built towns such as Garden City. However, there are only about twenty-five or so lumber boom related resources remaining

CONTINUED

**United States Department of the Interior
National Park Service**

**National Register of Historic Places
Continuation Sheet**

Hanson Lumber Company Office, Garden City, St. Mary Parish, LA

Section number 8 Page 2

in the state. This estimate is based upon the Division of Historic Preservation's survey files and general staff knowledge. This number includes individual buildings built by this or that particular lumber company and seven lumber company towns which survive in varying degrees of integrity. Among these rare survivors, the Hanson Lumber Company Office is particularly important because there are only four lumber company office buildings known to survive in the state. As the headquarters for the company and hence the town, these buildings are second in importance only to sawmills as reminders of the Louisiana lumber boom. Often the most prominent buildings in town, they symbolized the great power of the company.

With its colossal fluted columns and octagonal rotunda complete with a spiral staircase, the Hanson Lumber Company Office is unusually grand for a Louisiana lumber company town. The planned community it represents was founded by Albert Hanson, a lumberman from nearby Franklin. He established a cypress lumber company in that town in the 1890s. Needing room for expansion and desiring to build a town for his workers, Hanson purchased property near Franklin c.1900 and began construction. Historic photos show Garden City to have been an attractive, tidy town with mainly two story houses along an elongated loop. At the head of the loop stood the office and a two story commissary and at its center a large school. The lumber company and town remained in the Hanson family until 1924 when it was purchased by the F. B. Williams Cypress Company of nearby Patterson. Around 1927, May Brothers leased the lumber company from F. B. Williams. During the Depression, Garden City was sold to Clarence Aycock and Nicholas G. Huth, with the May Brothers continuing to lease the property until the mid-1950s when operations ceased.

Sadly, today's Garden City does not retain sufficient integrity to qualify as a historic district. Most of the original building stock has been demolished, with trailers and brick ranch houses taking its place. The school is gone, and the original commissary burned in 1937. Surviving are the office, a store built shortly after the old commissary burned, the owner's house, and scattered residences, most of which are severely deteriorated. Fortunately, the town was recorded in 1990 through Historic American Engineering Record (HAER) drawings.

United States Department of the Interior
National Park Service

National Register of Historic Places

Continuation Sheet

Hanson Lumber Company Office, Garden City, St. Mary Parish, LA

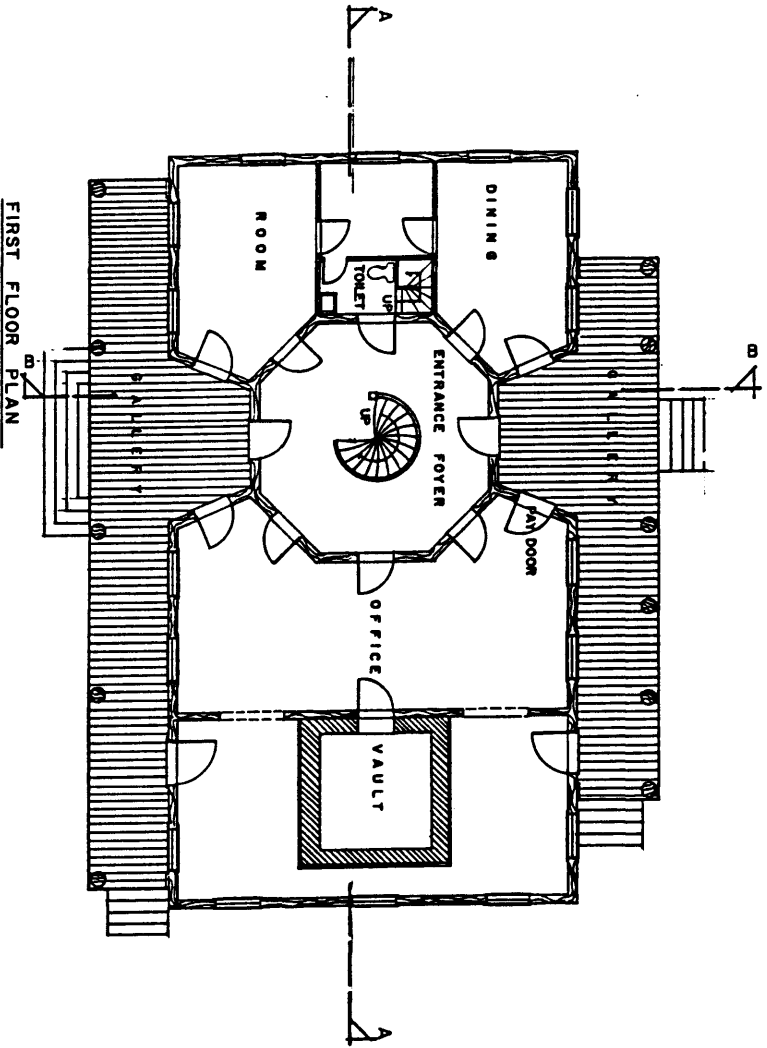
Section number 9 Page 1

Bibliography

Historic photos of Garden City, copies in National Register file, Louisiana Division of Historic Preservation.

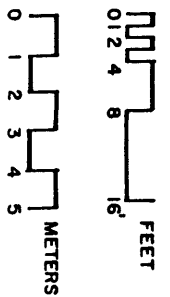
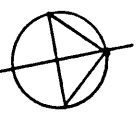
1924 inventory of Garden City, with map. In possession of owners of Hanson Lumber Company Office, Mr. and Mrs. W. E. Peltier, Jr., Garden City.

Brooks, Sandra. "Garden City -- A Living Monument to Days Gone By." Franklin Banner-Tribune, November 10, 1988. (Although newspaper articles are usually suspect sources, this history of Garden City gives every indication of being well researched.)



PUBLIC ROAD
L.A. HIGHWAY NO. 182

FIRST FLOOR PLAN



DELINEATED BY: BRYAN ESTES '90
UNIV. S. W. LOUISIANA - ARCHITECTURE
NATIONAL SERVICE
UNITED STATES DEPARTMENT OF THE INTERIOR

GARDEN CITY
ALBERT HANSON
CYPRESS COMPANY - MILL TOWN - 1900
ST. MARY PARISH
LOUISIANA

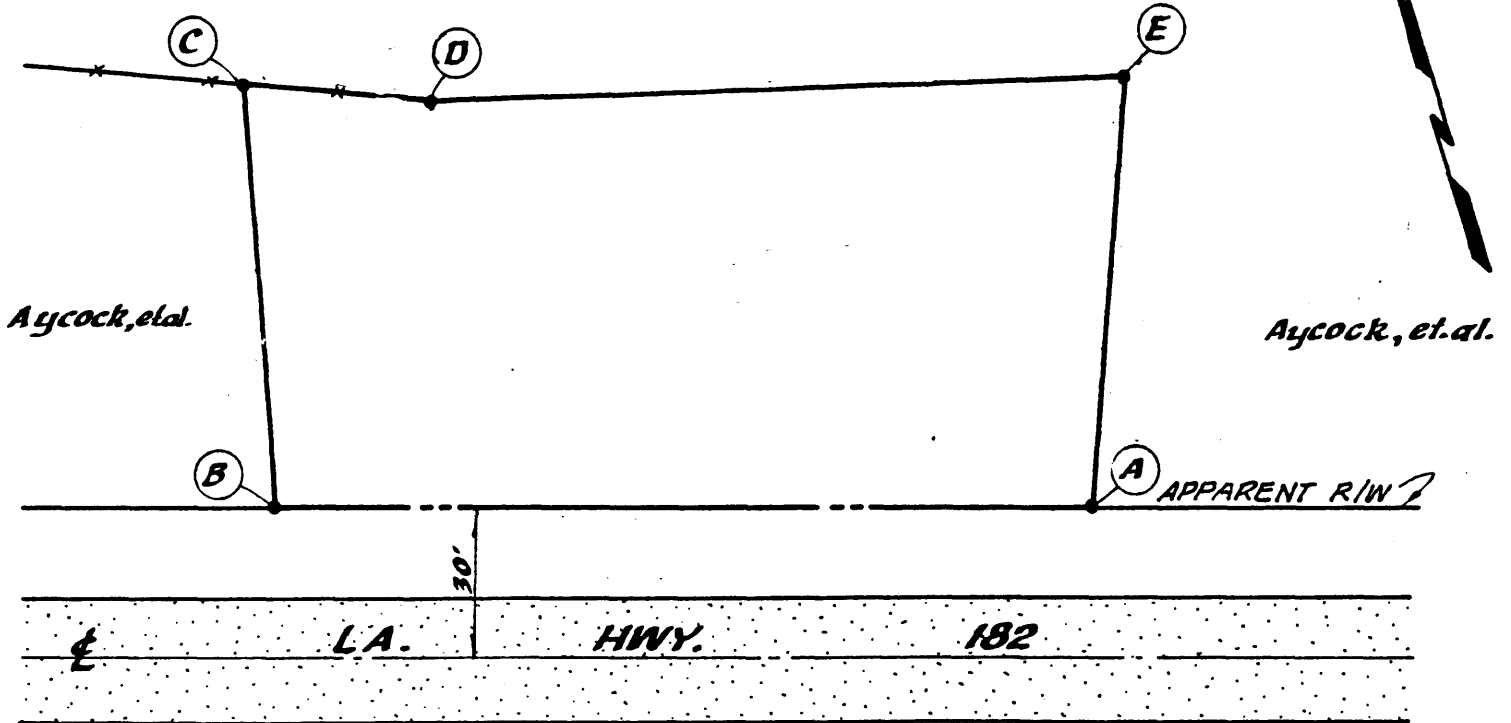
SHEET 3 OF 15
HISTORIC AMERICAN
ENGINEERING RECORD

Hanson Lumber Co. Office
Garden City
St. Mary Parish, LA

NOTE:

Point "D" is the same point "C" as shown
on dwg. for IMCO Services Lease site
dated: Oct. 28, 1980 by Miller Engineers
and Assoc., Inc. Job no. 5692

IMCO SERVICES LEASE SITE



LEGEND:

IRON PIPE..... •

**PLAN OF LAND
SHOWING PROPERTY OF
CLARENCE C. AYCOCK, et al.
TO BE ACQUIRED BY
W. E. PELTIER, JR.
BEING TRACT "ABCDEA"**

**MILLER ENGINEERS & ASSOC. INC.
ENGINEERS & SURVEYORS
FRANKLIN, LOUISIANA**

**SITUATED IN: SECTION 11, T15S-R10E
ST. MARY PARISH, LA.**

Glenn E. Miller
**GLENN E. MILLER, L.S. NO. 4377
FEBRUARY 13, 1985**

SCALE: 1" = 40'

DWG. NO. 7026