



Yakima Valley Transportation Company  
Yakima, Washington

Mark L. Brack  
September 1983

Washington State Office of Archaeology  
and Historic Preservation

Streetscape, facing south across S. 3rd  
Ave. toward YVTC property; substation  
on left ,stone shed in center, repair  
barn on right.

1 of 19



Yakima Valley Transportation Company  
Yakima, Washington

Mark L. Brack

September 1983

Washington State Office of Archaeology  
and Historic Preservation

YVTC property at 3rd Ave. and Pine St.  
facing north toward repair barn (in cen-  
ter) and substation (on right)

2 of 19



Yakima Valley Transportation Company  
Yakima, Washington

Mark L. Brack

September 1983

Washington State Office of Archaeology  
and Historic Preservation

Car repair barn, southeast and north-  
east facades, facing northwest

3 of 19



Yakima Valley Transportation Company  
Yakima, Washington

Mark L. Brack

September 1983

Washington State Office of Archaeology  
and Historic Preservation

Interior: Car repair barn, facing southeast,  
historic locomotives are stored at the far  
end of the barn (#297 is on the left, Line  
car A is on the right, #298 is behind car A).





Yakima Valley Transportation Company  
Yakima, Washington

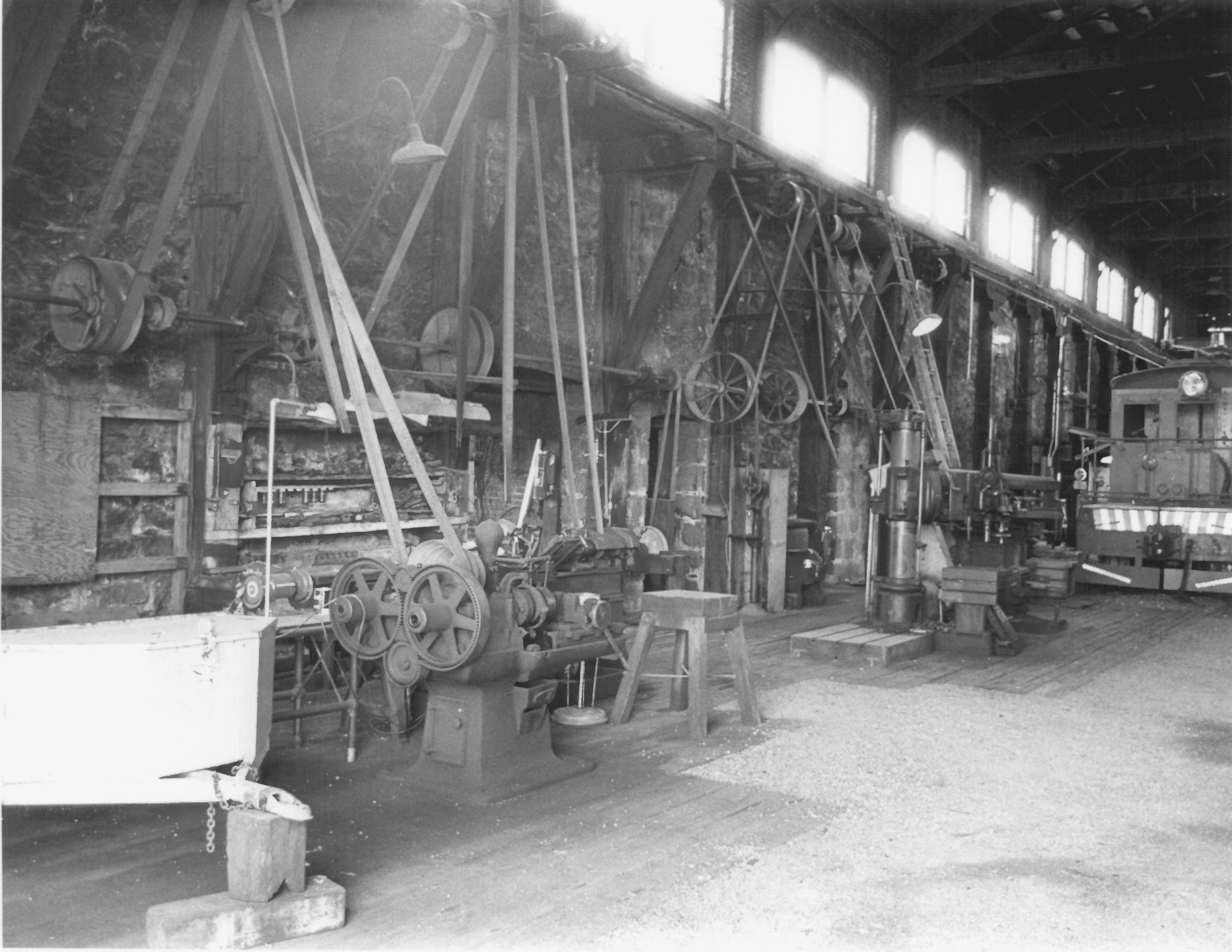
Mark L. Brack

September 1983

Washington State Office of Archaeology  
and Historic Preservation

Interior: car repair barn, blacksmith's  
shop

5 of 19



Yakima Valley Transportation Company  
Yakima, Washington

Kenneth Johnsen

March 1983

K. Johnsen, 314 S. 4th Ave. Kent, Wa.  
98032

Interior: Car repair barn, belt-driven  
machinery against the noertheast wall

6 of 19



NATIONAL BAR

Yakima Valley Transportation Company  
Yakima, Washington

Mark L. Brack

September 1983

Washington State Office of Archaeology  
and Historic Preservation

Stone Shed, southwest and southeast  
facades, facing north

7 of 19



Yakima Valley Transportation Company  
Yakima, Washington

Mark L. Brack

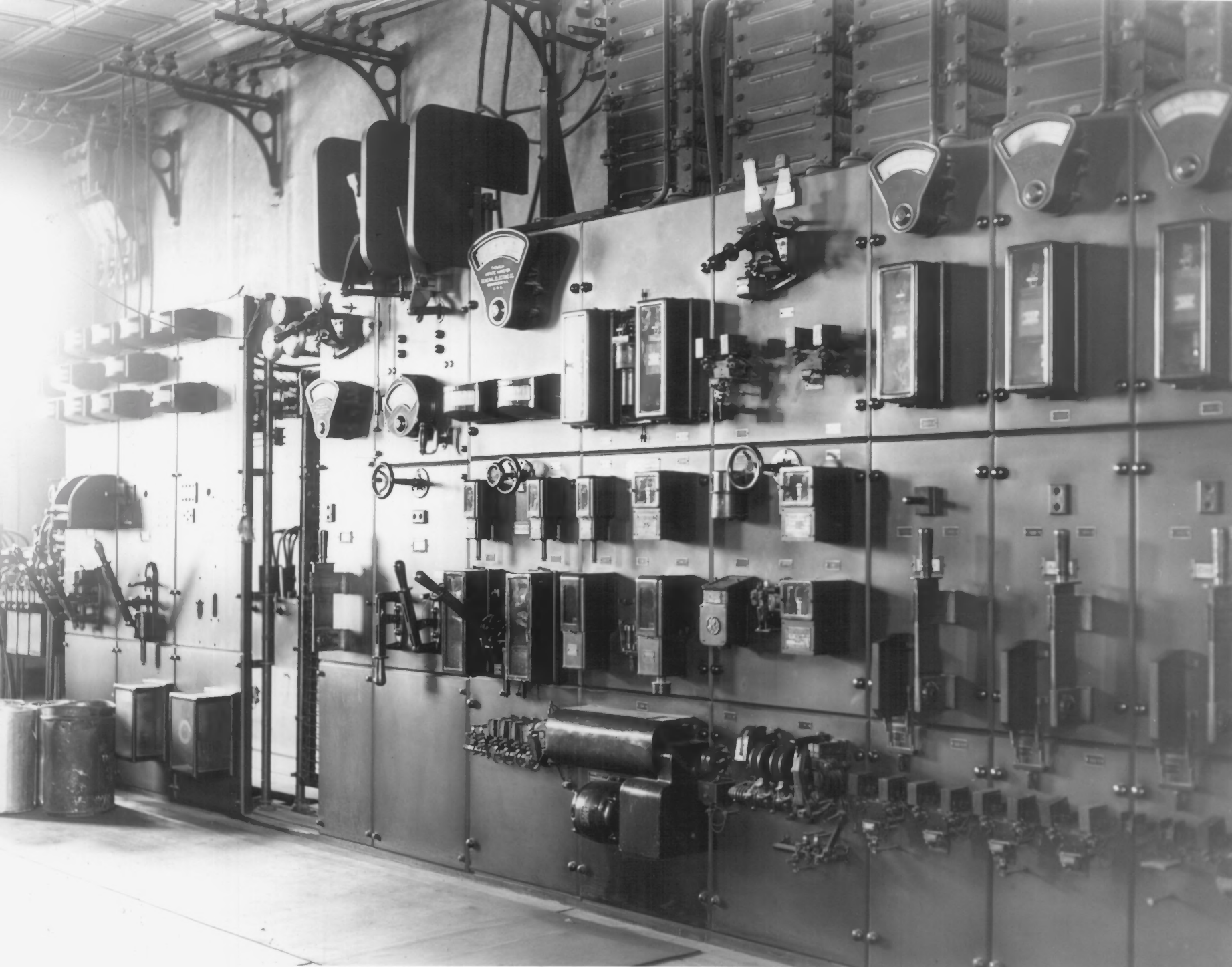
September 1983

Washington State Office of Archaeology  
and Historic Preservation

Main substation: northwest and south-  
west elevations, facing southeast

8 of 19





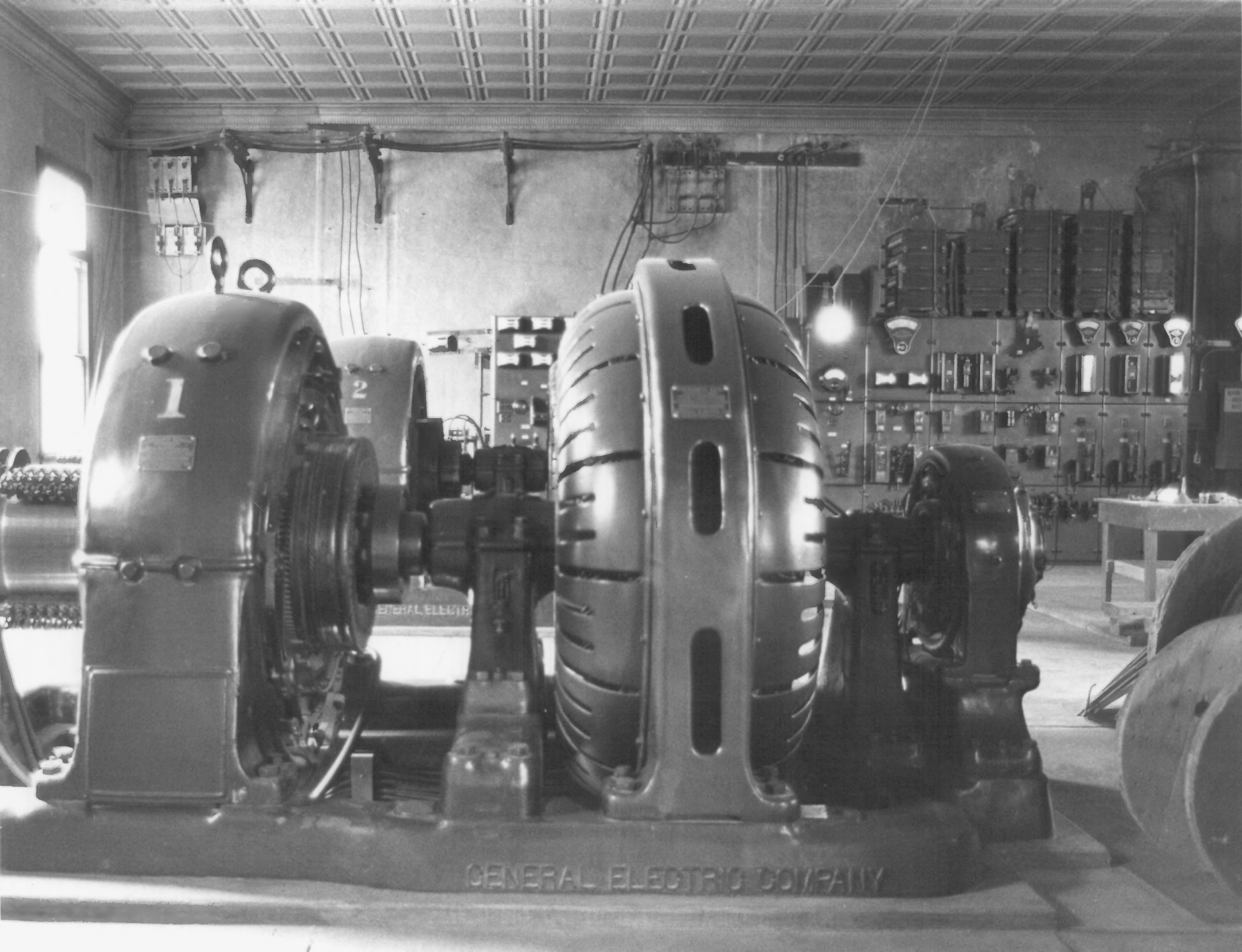
Yakima Valley Transportation Company  
Yakima, Washington

Kenneth Johnsen

March 1983  
K. Johnsen, 314 S. 4th Ave. Kent Wa.  
98032

Main substation interior: electrical  
switching equipment against the south-  
west wall

9 of 19



1

2

GENERAL ELECTRIC

GENERAL ELECTRIC COMPANY

Yakima Valley Transportation Company  
Yakima, Washington

Kenneth Johnsen

March 1983

K. Johnsen, 314 S. 4th Ave. Kent, Wa.  
98032

Main substation interior: motor generators in foreground, facing southwest

10 of 19



Yakima Valley Transportation Company  
Yakima, Washington

Mark L. Brack

September 1983

Washington State Office of Archaeology  
and Historic Preservation

Wide Hollow substation

West and south facades, facing north-  
east

11 of 19



YVT Co. A

Yakima Valley Transportation Company  
Yakima, Washington

EN

MAY 15, 1983

Kenneth Johnsen

May 1983

K. Johnson, 314 S. 4th Ave. Kent, Wa.  
98032

Line Car "A"

photographed at the YVTC yard at 3rd Ave  
and Pine St.

12 of 19





YVTC Co

298

Yakima Valley Transportation Company  
Yakima, Washington

MAY 15, 1983

Kenneth Johnsen


May 1983

K. Johnsen, 314 S. 4th Ave. Kent, Wa.  
98032

Electric Locomotive #298

Photographed in front of the car repair  
barn, facing northwest

13 of 19



YVT Co.  
297

Yakima Valley Transportation Company  
Yakima, Washington

Kenneth Johnsen

May 1983

K. Johnsen, 314 S. 4th Ave. Kent, Wa.  
98032

Electric Locomotive #297

Photographed in front of the car repair  
barn, facing northwest

14 of 19



L CO SOUTH WKS

19091X

L CO

PHOTOGRAPH BY  
KENNETH G. JOHNSEN

Yakima Valley Transportation Company  
Yakima, Washington

Kenneth Johnsen

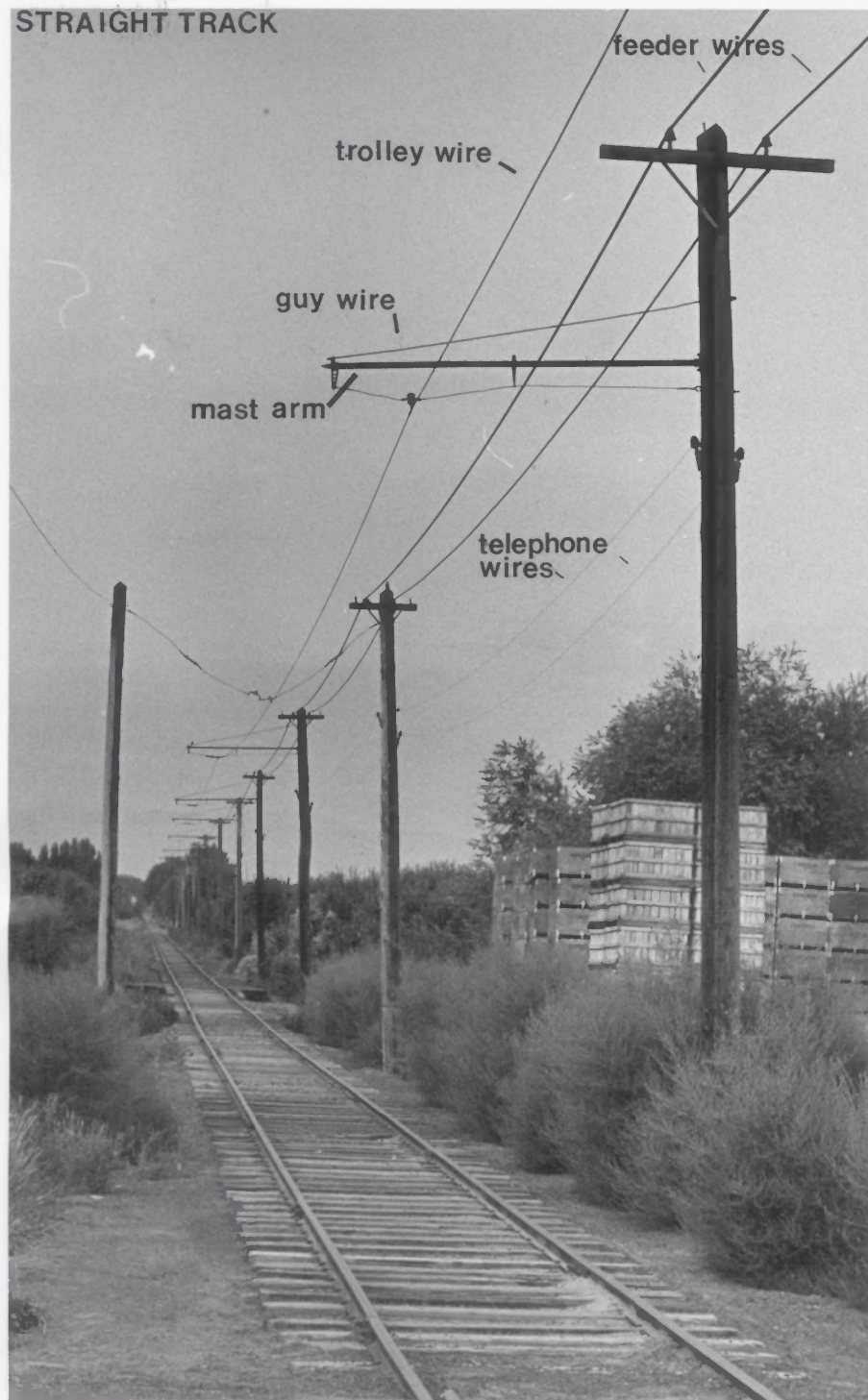
August 1983

K. Johnsen, 314 S. 4th Ave. Kent, Wa.  
98032

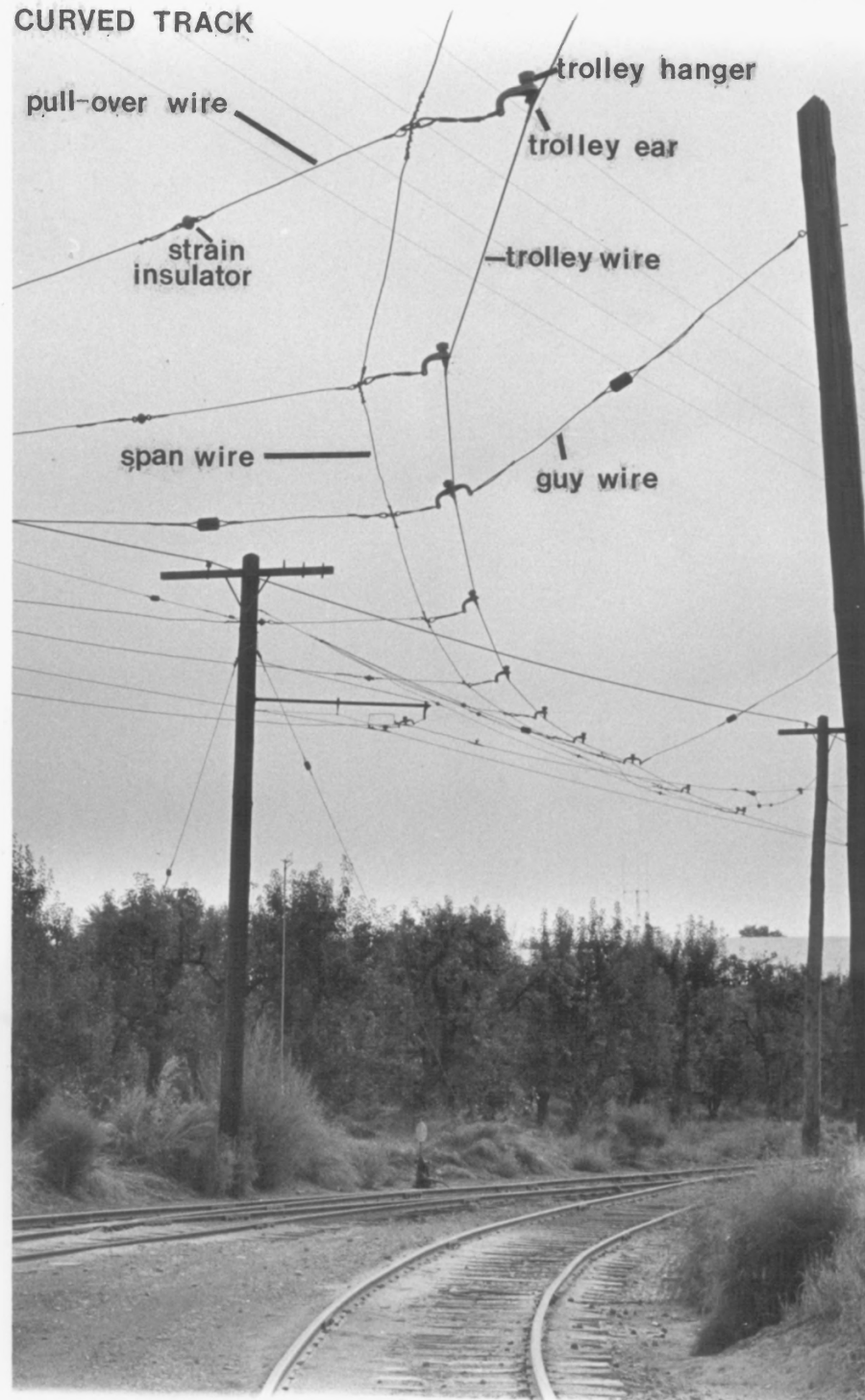
Original rail on the YVTC's Wiley City  
line at Wide Hollow Junction

15 of 19

STRAIGHT TRACK



CURVED TRACK



Yakima Valley Transportation Company  
Yakima, Washington

Kenneth Johnsen

August 1983

K. Johnsen, 314 S. 4th Ave. Kent, Wa.  
98032

Typical YVTC overhead electric lines for  
both straight and curved track. Photo-  
graphed at Wide Hollow Junction. Photo  
on left facing west; photo on right  
facing northeast.

16 of 19





Yakima Valley Transportation Company  
Yakima, Washington

Mark L. Brack

September 1983

Washington State Office of Archaeology  
and Historic Preservation

YVTC Bridge over the Naches River, constructed as part of the Selah line in 1912-1913

facing northwest



LARSON FRUIT CO.

Yakima Valley Transportation Company  
Yakima, Washington

Mark L. Brack

September 1983

Washington State Office of Archaeology  
and Historic Preservation

YVTC tracks and a cold storage warehouse  
at Railroad Ave. and Naches Ave. in  
Selah, facing northeast

18 of 19



Yakima Valley Transportation Company  
Yakima, Washington

Kenneth Johnsen  
March 1983

K. Johnsen, 314 S. 4th Ave. Kent, Wa. 98032

Locomotive #298 hauling a freight car on the  
Selah Line at N. 6th Ave. and Roosevelt Ave.  
facing southeast

19 of 19