









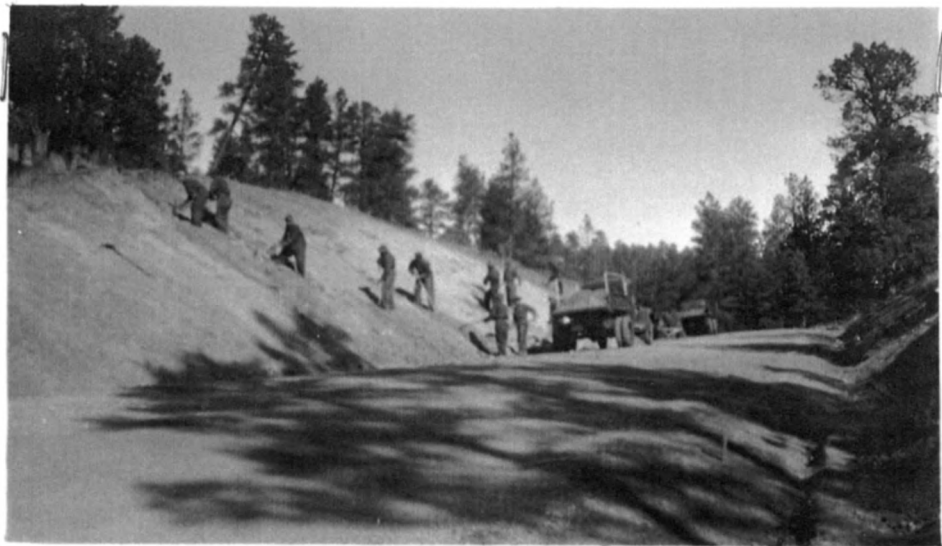




Entrance Road  
Report to Howard W. Baker  
from Resident Landscape Architect S. Serrano  
ECW/CCC Activities -  
Oct. 1, 1935 to Oct. 1, 1936

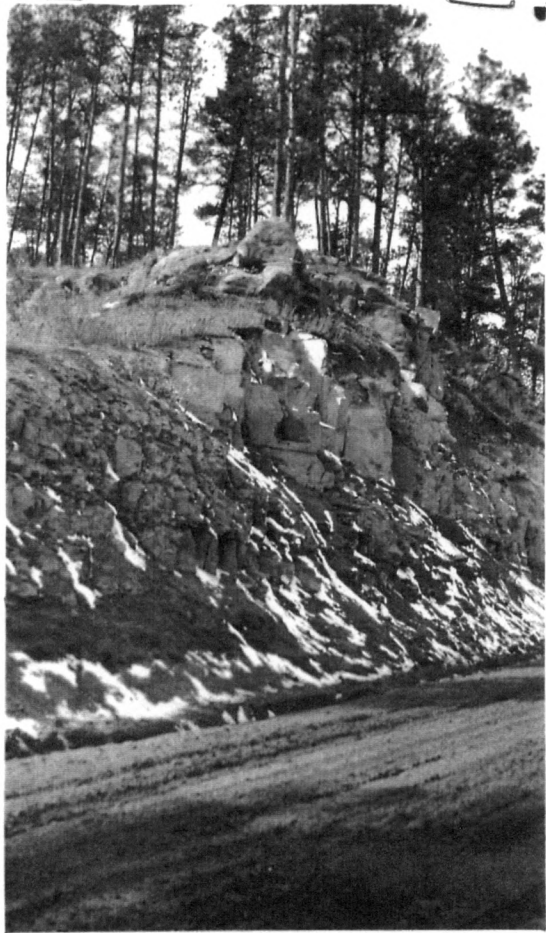


"Resodding ditch line and cut slope after flattening and rounding along entrance highway."



"Flattening and rounding cut slope along entrance highway."





"Roadside cut slope not touched  
except removal of loose material."



"Showing manner in which rock cut slopes left in rough state."



"Showing cut slope after flattening and rounding."



"Cut slope after flattening and rounding. Note all existing rocks strongly imbedded, not disturbed."

Report to Howard W. Baker,  
District Landscape Architect  
on Devils Tower National Monument  
ECW 6th and 7th Period Activities  
by S. Serrano (1936)



"Showing headwall typical of  
those constructed along entrance highway"