



United States Post Office

901 Broadway, Nashville, Davidson
County, TN

Photo by: Thomason and Assoc.

Date: May, 1984

Neg: Thomason and Assoc., Nashville, TN

View: Facing south

1 of 5



United States Post Office

901 Broadway, Nashville, Davidson

County, TN

Photo by: Thomason and Assoc.

Date: May, 1984

Neg: Thomason and Assoc., Nashville, TN

View: Facing west

2 of 5



United States Post Office

901 Broadway, Nashville, Davidson
County, TN

Photo by: Thomason and Assoc.

Date: August, 1984

Neg: Thomason and Assoc., Nashville, TN

View: Facing north, south facade

3 of 5



United States Post Office

901 Broadway, Nashville, Davidson
County, TN

Photo by: Thomason and Assoc.

Date: August, 1984

Neg: Thomason and Assoc., Nashville, TN

View: Detail of main facade

4 of 5



United States Post Office

901 Broadway, Nashville, Davidson

County, TN

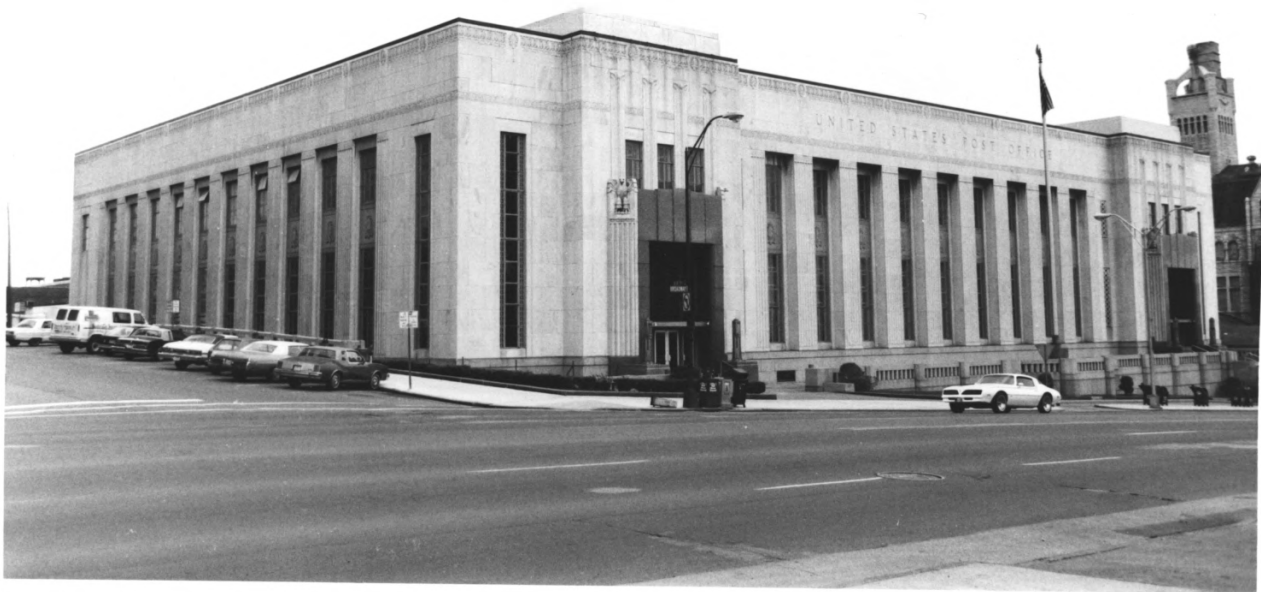
Photo by: Thomason and Assoc.

Date: May, 1984

Neg: Thomason and Assoc., Nashville, TN

View: Main lobby Art Deco decoration

5 of 5



Marr and Holman Buildings in Downtown
Nashville (1922-1936) Thematic Resources

U.S. Post Office

901 Broadway

Nashville, Davidson County, Tennessee

Photo by: Thomason and Associates

Date: April 1984

Neg: Thomason and Associates

1700 Hayes St., Suite 202

Nashville, Tennessee 37202

North (front) elevation, facing southeast

7 of 8