



Murrells Inlet Historic District
Georgetown County, South Carolina
Michele Barovsky, 1/29/80
S.C. Department of Archives & History
Sunnyside (#1)
Photo #1 of 8

OCT 8 1980

NOV 25 1980



Murrells Inlet Historic District
Georgetown County, South Carolina

Julie Burr, June 1978

S.C. Department of Archives & History

The Hermitage (#29)

Photo #2 of 8

OCT 8 1980

NOV 25 1980



Murrells Inlet Historic District
Georgetown County, South Carolina

Michele Barovsky, 1/29/80

S.C. Department of Archives & History

View northeast across marshland (low tide)

Photo #3 of 8

OCT 6 1980

NOV 25 1980



Murrells Inlet Historic District

Georgetown County, South Carolina

Michele Barovsky, 1/29/80

S.C. Department of Archives & History

View to the north showing piers (low tide)

Photo #4 of 8

OCT 6 1980

NOV 25 1980



Murrells Inlet Historic District
Georgetown County, South Carolina

Michele Barovsky, 1/29/80

S.C. Department of Archives & History

Bates House (#13)

Photo # 5 of 8

OCT 6 1980

NOV 25 1980



Murrells Inlet Historic District
Georgetown County, South Carolina
Michele Barovsky, 1/29/80
S.C. Department of Archives & History
Peterkin House (#12)
Photo # 6 of 8

OCT 6 1980

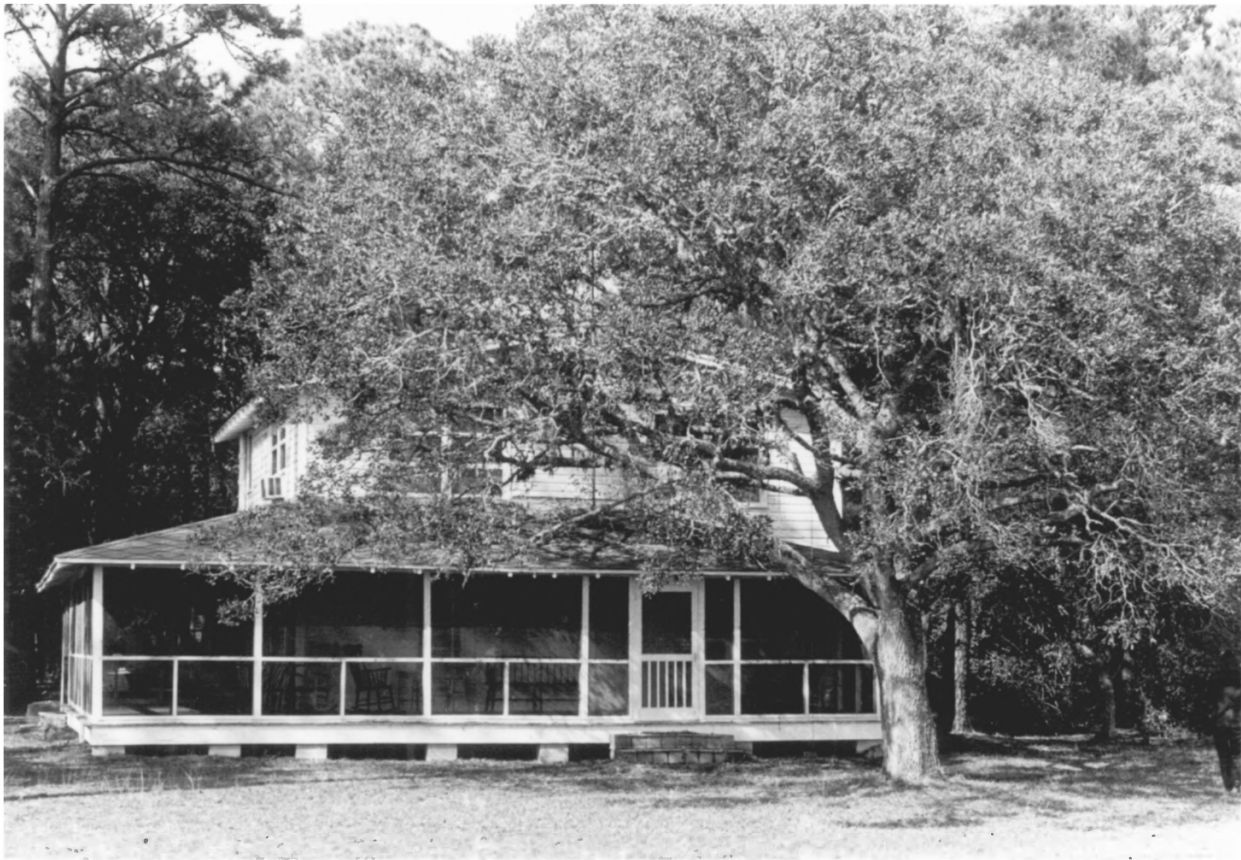
NOV 25 1980



Murrells Inlet Historic District
Georgetown County, South Carolina
Michele Barovsky, 1/29/80
S.C. Department of Archives & History
Willouise (#6)
Photo #7 of 8

OCT 6 1980

NOV 25 1980



Murrells Inlet Historic District
Georgetown County, South Carolina

Michele Barovsky, 1/29/80

S.C. Department of Archives & History

Fairey House (#9)

Photo #8 of 8

OCT 6 1980

NOV 25 1980



Murrell's Inlet Area

Proposed to U.S. Department of Interior
for Determination of Eligibility for the
National Register of Historic Places

Georgetown County, South Carolina

Historic Preservation Staff 1980

S.C. Department of Archives and History

Baitshop and restaurant

~~#39~~ (View taken at low tide) 45

NOV 25 1980



Murrell's Inlet Area

Proposed to U.S. Department of Interior
for Determination of Eligibility for the
National Register of Historic Places

Georgetown County, South Carolina

Historic Preservation Staff 1980

S.C. Department of Archives and History

~~#13~~ (View taken at low tide)

~~11~~ 11

NOV 25 1980



Murrell's Inlet Area

Proposed to U.S. Department of Interior
for Determination of Eligibility for the
National Register of Historic Places

Georgetown County, South Carolina

Historic Preservation Staff 1980

S.C. Department of Archives and History

#23

#23

NOV 25 1980



Murrell's Inlet Area

Proposed to U.S. Department of Interior
for Determination of Eligibility for the
National Register of Historic Places

Georgetown County, South Carolina

Historic Preservation Staff 1980

S.C. Department of Archives and History

~~#20~~ (View taken at low tide)

19

NOV 25 1980



Murrell's Inlet Area

Proposed to U.S. Department of Interior
for Determination of Eligibility for the
National Register of Historic Places

Georgetown County, South Carolina

Historic Preservation Staff 1980

S.C. Department of Archives and History

~~#15~~ (View taken at low tide)

14

NOV 25 1980



Murrell's Inlet Area

Proposed to U.S. Department of Interior
for Determination of Eligibility for the
National Register of Historic Places

Georgetown County, South Carolina

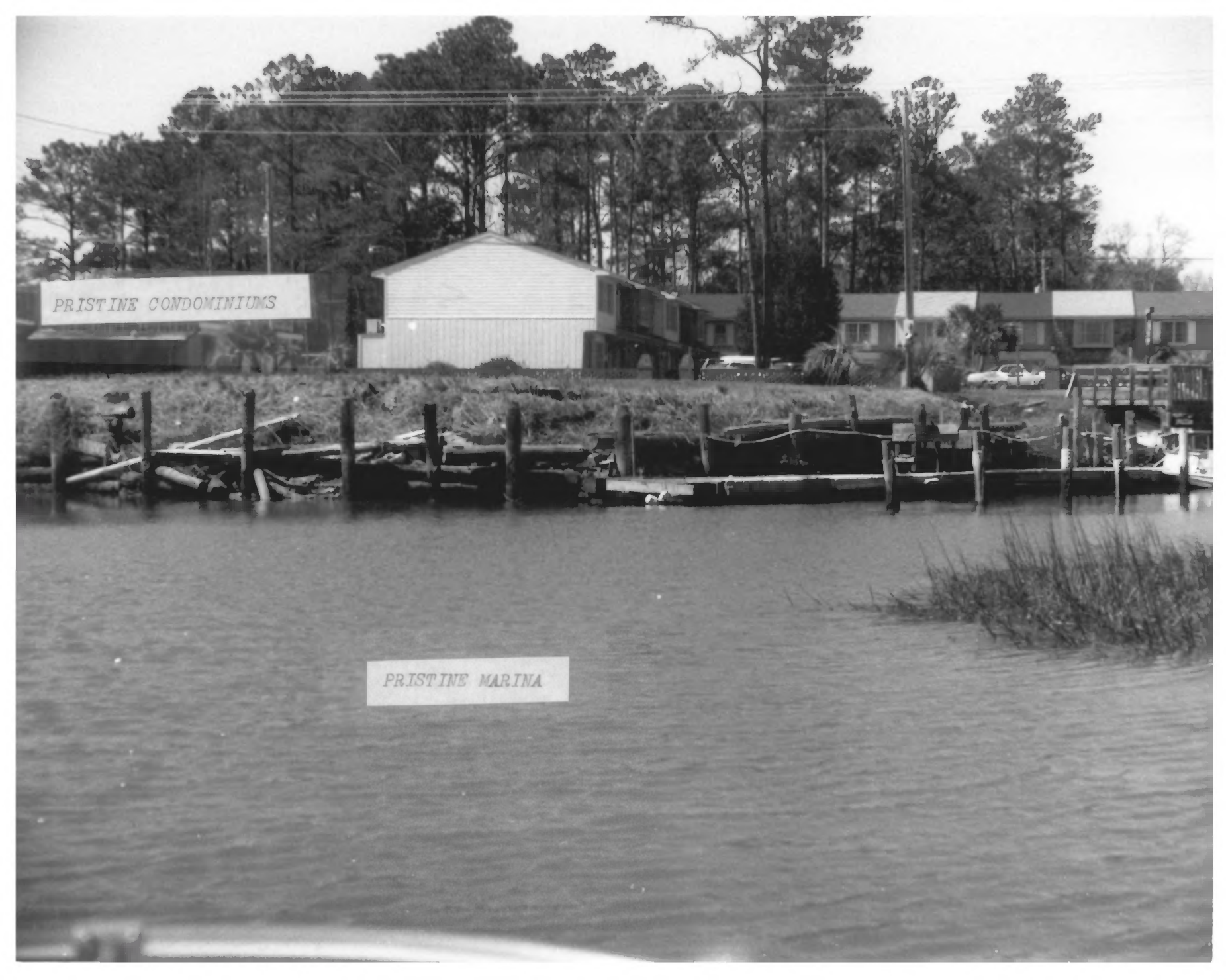
Historic Preservation Staff 1980

S.C. Department of Archives and History

~~#33~~

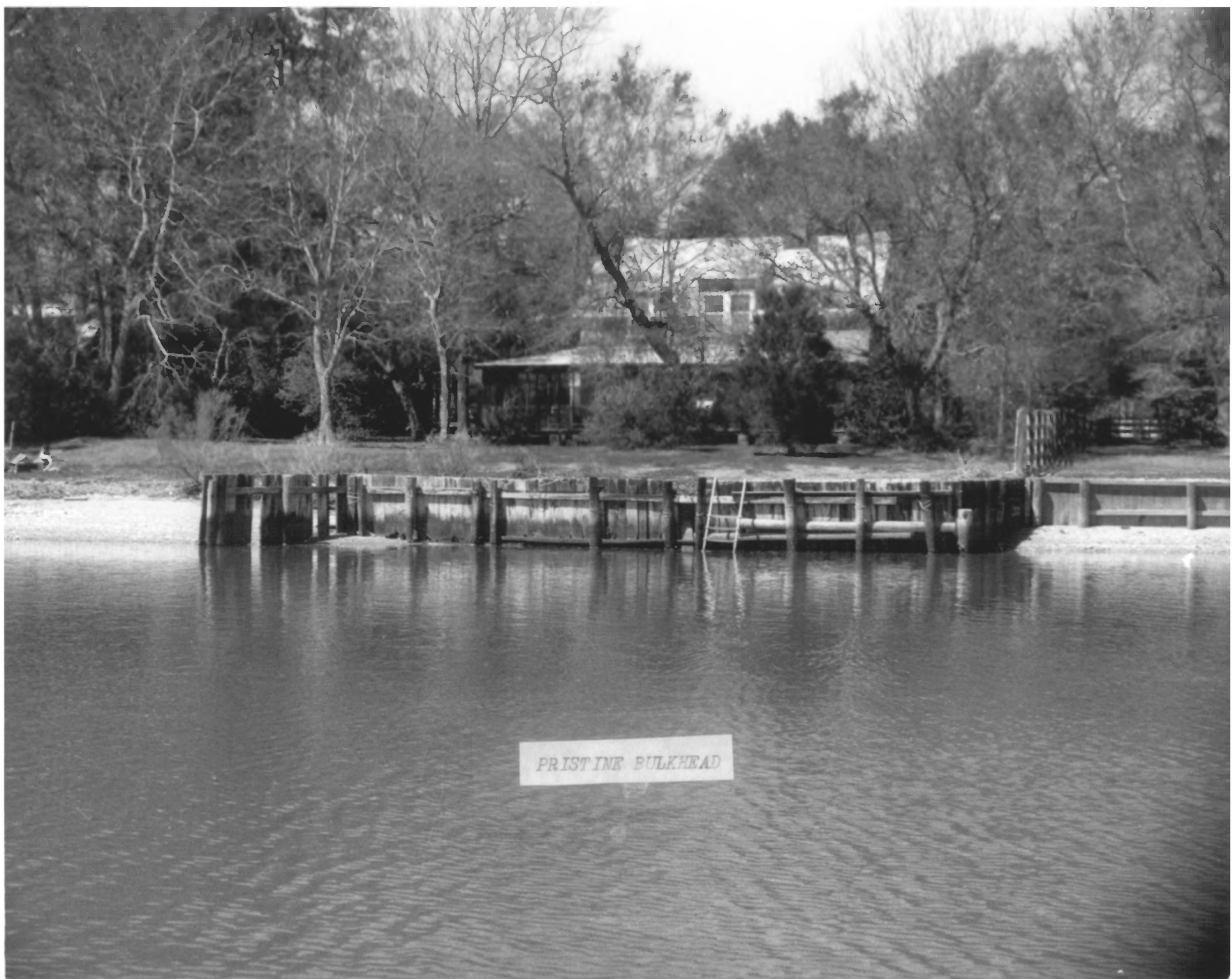
34

NOV 25 1980




PRISTINE CONDOMINIUMS

PRISTINE MARINA



PRISTINE BULKHEAD

A black and white photograph of a waterfront scene. In the foreground, there is a body of water with ripples. A long wooden pier extends from the left side towards the center. A small boat is docked at the pier. On the right side, another wooden structure, possibly a dock or part of a building, is visible. In the background, there is a dense line of trees, including several tall pine trees. A person is standing on the shore near the pier. The overall scene is a quiet, natural setting.

PRISTINE FILLED STATE MARSHLAND