



1. Office adjoining Indiana Cotton Mill,
Cannelton Historic District
2. Cannelton, IN
3. Kay Anne Peake
4. 5/1984 [6#12]
5. Indiana 15 Regional Planning Commission
6. Front and side view, camera facing west
- 7.

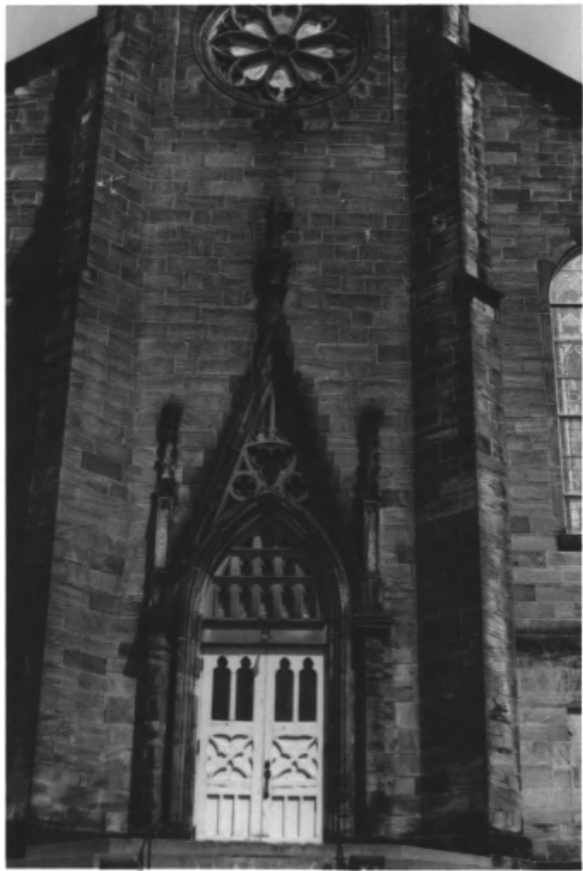
2 of 94



Kay Anne Peake

1. St. Michael's Church, Nun's House, and
St. Michael's School, Cannelton Historic
Side District camera facing north
2. Cannelton, IN
3. Kay Anne Peake
4. 4/1984 [1#17]
5. Indiana 15 Regional Planning Commission
6. Side view, camera facing northwest

7. 3 of 94



1. St. Michael's Church, Cannelton Historic District
2. Cannelton, IN
3. Kay Anne Peake
4. 4/1984 [1#18]
5. Indiana 15 Regional Planning Commission
6. Front view (detail), camera facing northeast

7. 4 of 94



1. Sandstone Residence, Cannelton Historic District
2. Cannelton, IN
3. Kay Anne Peake
4. 5/1984 [4#2]
5. Indiana 15 Regional Planning Commission
6. Front view, camera facing northeast
- 7.

5 of 94



1. Cotton Duplex, Sandstone, Cannelton
Historic District
2. Cannelton, IN
3. Kay Anne Peake
4. 4/1984 [2#10]
5. Indiana 15 Regional Planning Commission
6. Front and side view, camera facing east
- 7.

6 of 94



1. Sandstone Residence, Cannelton Historic District
2. Cannelton, IN
3. Kay Anne Peake
4. 4/1984 [2#13]
5. Indiana 15 Regional Planning Commission
6. Front view, camera facing east
- 7.

7 of 94



8

1. Sandstone, Cannelton Historic District
2. Cannelton, IN
3. Kay Anne Peake
4. 1. Sandstone Residence, Cannelton Historic District
5. Indiana 15 Regional Planning Commission
6. 2. Cannelton, IN
7. 3. Kay Anne Peake
4. 4/1984 [2#14]
5. Indiana 15 Regional Planning Commission
6. Front view, camera facing east
- 7.

8 of 94



1. St. Luke's Episcopal Church, Cannelton
 2. Cannelton Historic District
 3. Cannelton, IN
 4. Kay Anne Peake
 5. 6/1984 [9#21] Planning Commission
 6. Indiana 15 Regional Planning Commission
camera facing east
 7. Front and side view, camera facing southeast
7. 9 of 94



- 1. Myers Grade School-The Free School,
Cannelton, Historic District
- 2. Cannelton, IN
- 3. 1. Myers Grade School/The Free School,
Cannelton Historic District
- 4. 5/19 Cannelton Historic District
- 5. 2. Cannelton, IN Indiana 15 Regional Planning Commission
- 6. 3. on Kay Anne Peake facing southeast
- 7. 4. 5/1984 [4#21]
5. Indiana 15 Regional Planning Commission
6. Front view, camera facing southeast
7. 10 of 94

R34 4-21



- 1. Perry County Courthouse, Cannelton
Historic District
- 2. Cannelton, IN
- 3. 1. Perry County Courthouse, Cannelton
- 4. 4/19 Historic District
- 5. 2. Cannelton, IN Planning Commission
- 6. 3. Kay Anne Peake, camera facing north
- 7. 4. 4/1984 [2#31]
- 5. Indiana 15 Regional Planning Commission
- 6. Front and side view, camera facing north
- 7. 11 of 94



THE GREAT FORTRESS MARIETTA

DE LARAFETTE

WHO SPENT A NIGHT AND A DAY
AT ROCK ISLAND HOLDING FROM 3000
ENEMY SOLDIERS THE STRANDON AND WAS KICKED
DOWN FOR HIS DARE TO SEE HIM
THE SPOT IS NOW CALLED LADYBIRD SPRING

THE BATTLE OF SEPTEMBER 26, 1777

IN MEMORY OF THE
REVOLUTIONARY SOLDIERS
BURIED IN FERRY COUNTY

GREGG CONNOR, THOMAS GIMMINGS,
GEORGE SWANG, DANIEL MALLORY,
ABRAHAM HILLY, THOMAS REIDERS,
JOHN CAMP, ROBE WEAVER, JOHN...

ERECTED BY
THE MARIETTA STONE CHAPTER
1908

1. Plaque, Cannelton Historic District
2. Cannelton, IN
3. Kay Anne Peake
4. 5/1984 [3#34]
5. Indiana 15 Regional Planning Commission
6. Front view (plaque), camera facing northeast

7. 12 of 94



- 1. Charles Mason House - ~~3542e~~, Cannelton
- 1. Joseph F. Sulzer House, Cannelton
- 2. Historic District
- 2. Cannelton, IN
- 3. Kay Anne Peake
- 4. 7/1984 [13#21] Planning Commission
- 5. Indiana 15 Regional Planning Commission
- 6. Front and side view, camera facing southwest

7. 13494





1. ~~4701~~ Place-De-La Hunt House,
Cannelton Historic District
2. Cannelton, IN
3. Kay Anne Peake
1. Thomas de la Hunt House, Cannelton
Historic District
2. Cannelton, IN
3. Kay Anne Peake
4. 7/1984 [14#14]
5. Indiana 15 Regional Planning Commission
6. Front view, camera facing south
7. [redacted]

14 of 94



House

1. Mason-Newcomb-Sulzer Home-Superintendent's Office, Cannelton Historic District
2. Cannelton, IN
3. Kay Anne Peake
4. 7/1984 [14#34]
5. Indiana 15 Regional Planning Commission
6. Side view, camera facing north
7. 15 of 94



16

1. Union Hotel and Carriage House, Cannelton
Historic District
2. 1. Union Hotel and Carriage House, Cannelton
3. 2. Historic District
4. 3. Cannelton, IN
5. 4. Kay Anne Peake Indiana 15 Regional Planning Commission
6. 5. 7/1984 [14#19] facing east
7. 6. 104 Indiana 15 Regional Planning Commission
6. Side view, camera facing east
7. 16 of 94



1. F.H. Clemens Store, Cannelton Historic District
 2. Cannelton, IN
 3. Kay Anne Peake
 4. 1. F. H. Clemens Store, Cannelton Historic District
 5. Indiana 15 Regional Planning Commission
 6. North view, camera facing northeast
 7. 4/1984 [2#25]
- 17 of 94



1. Jacob Heck Store, Cannelton Historic District
2. Cannelton, IN
3. Kay Anne Peake
4. 6/1984 [7#3]
5. Indiana 15 Regional Planning Commission
6. Front and side view, camera facing northwest
- 7.

18 of 94



19

1. ~~Irvin's Store~~ Irvin's Store, Cannelton
Historic District
2. Cannelton, IN
3. Kay Anne Peake
4. 1. Irvin's Store, Cannelton Historic
District
5. Indiana 15 Regional Planning Commission
6. Front and side view, camera facing west
7. 3. Kay Anne Peake
4. 5/1984 [5#8]
5. Indiana 15 Regional Planning Commission
6. Front and side view, camera facing west
7. ~~Irvin's Store~~ 19 of 94



- 1. Busam's Store, Cannelton Historic District
- 2. Cannelton, IN
- 3. Kay Anne Peake
- 4. 5/1984 [5#9]
- 5. Indiana 15 Regional Planning Commission
- 6. Front and side view, camera facing north
- 7. _____

20 of 94

Commercial Holdings, Cannelton Historic District, IN, Kay Anne Peake, 5/1984



1. Sandstone Commercial Building, Cannelton
Historic District
2. Cannelton, IN
3. Kay Anne Peake
4. 2/1980
5. Indiana 15 Regional Planning Commission
6. Front and side view, camera facing east
7. 21 of 94



MASONIC
HALL

Open House

1. Cannelton Lodge #152 Free and Accepted Masons, Cannelton Historic District
2. Masonic Lodge, Cannelton Historic District
3. Cannelton, IN
5. Kay Anne Peake
6. 7/1984 [13#6] facing southwest
7. Indiana 15 Regional Planning Commission
6. Front view, camera facing southwest
- 7.

22 of 94



1. Commercial Building, Cannelton Historic District
2. Cannelton, IN
3. Kay Anne Peake
4. 6/1984 [9#7]
5. Indiana 15 Regional Planning Commission
6. Front view, camera facing east

7. 23 of 94



1. Commercial Building, Cannelton Historic District
2. 1. Commercial Building, Cannelton Historic District
3. Kay District
4. 2. Cannelton, IN
5. 3. Indiana 15 Regional Planning Commission
6. 4. 6/1984 [9#10] facing southeast
7. 5. Indiana 15 Regional Planning Commission
6. Front view, camera facing south
7. 24 of 94



- 1. Commercial Buildings, Cannelton Historic District
- 2. 1. Commercial Buildings, Cannelton Historic District
- 3. Kay Anne Peake District
- 4. 2. Cannelton, IN
- 5. 3. Indiana 15 Regional Planning Commission
- 6. 4. 6/1984 [9#12] facing southeast
- 7. 5. Indiana 15 Regional Planning Commission
- 6. Front view, camera facing east
- 7. 25 of 94



1. Commercial Building, Cannelton Historic District
2. 1. Commercial Building, Cannelton Historic District
3. Kay Anne Peake
4. 2. Cannelton, IN
5. Indiana 15 Regional Planning Commission
6. 6/1984 [9#15] facing east
7. 5. Indiana 15 Regional Planning Commission
6. Front view, camera facing east
7. 26 of 94



27

1. Commercial Buildings, Cannelton Historic District
2. Cannelton, IN
3. Kay Anne Peake
4. 6/1984 [9#16] Planning Commission
5. Indiana 15 Regional Planning Commission
6. Front and side view, camera facing east
7. 27 of 94



UNITED STATES POST OFFICE

CARRINGTON, ILL.

47130

210 WASHINGTON STREET

1. ~~Store~~ Rosenblatt's Store (also St. Luke's Church)
 ton Historic District
2. Cannelton, IN
3. 1. Rosenblatt's Store and St. Luke's Church,
 Cannelton Historic District
4. 6/1984
5. 2. Cannelton, IN Indiana Planning Commission
6. 3. Kay Anne Peake facing east
7. 4. 6/1984 [9#22]
5. Indiana 15 Regional Planning Commission
6. Front and side view, camera facing
 northeast
7. 28 of 94



1. Sunlight Hotel, Cannelton Historic District
2. Cannelton, IN
3. Kay Anne Peake
4. 6/1984 [9#26]
5. Indiana 15 Regional Planning Commission
6. Front view, camera facing northeast
7. 29 of 94



1. Commercial Building, Cannelton Historic District
2. Cannelton, IN
3. Kay Anne Peake
4. 5/1984 [6#5]
5. Indiana 15 Regional Planning Commission
6. Front view, camera facing northwest

7. 30 of 94



1. Kilns and Can-Clay, Cannelton Historic District
2. Cannelton, IN
3. Kay Anne Peake
4. 5/1984 [6#19]
5. Indiana 15 Regional Planning Commission
6. View of Industrial Site, camera facing southwest
7. : 31 of 94



1. Kilns and Can-Clay, Cannelton Historic District
2. Cannelton, IN
3. Kay Anne Peake
4. 11/1984 [15#15]
5. Indiana 15 Regional Planning Commission
6. View of Industrial Site, camera facing north

7. 32 of 94



1. Cannelton High School, Cannelton Historic District
2. Cannelton, IN
3. Kay Anne Peake
4. 7/1984 [14#36]
5. Indiana 15 Regional Planning Commission
6. Side and front view, camera facing east
- 7.



1. Community Building, Cannelton Historic District
2. Cannelton, IN
3. Kay Anne Peake
4. 6/1984 [7#5]
5. Indiana 15 Regional Planning Commission
6. Front and side view, camera facing north
- 7.

34 of 94



CANNELTON
FIRE DEPARTMENT
NO PARKING

1. Bandstand and Fire Station, Cannelton
Historic District
2. Cannelton, IN
3. Kay Anne Peake
4. 7/1984 [11#22]
5. Indiana 15 Regional Planning Commission
6. Front view, camera facing southwest

7. 35 of 94



1. St. John's United Church of Christ,
Cannelton Historic District
2. Cannelton, IN
3. Kay Anne Peake
4. 5/1984 [5#23]
5. Indiana 15 Regional Planning Commission
6. Front view, camera facing northwest
- 7.

36 of 94



1. First Methodist Church, Cannelton
Historic District
2. Cannelton, IN
3. Kay Anne Peake
4. 7/1984 [14#10]
5. Indiana 15 Regional Planning Commission
6. Front and side view, camera facing south

7. 37 of 94



1. German Methodist Society, Cannelton
Historic District
2. Cannelton, IN
3. Kay Anne Peake
4. 5/1984 [3#32]
5. Indiana 15 Regional Planning Commission
6. Front and side view, camera facing north

7. 38 of 94



SCHULT

1. Worker's House, Cannelton Historic District
2. Cannelton, IN
3. Kay Anne Peake
4. 7/1984 [10#24]
5. Indiana 15 Regional Planning Commission
6. Front view, camera facing east

7. 39 of 94



1. Clemens House, Cannelton Historic
District

2. Cannelton, IN

3. Kay Anne Peake

4. 7/1984 [11#31]

5. Indiana 15 Regional Planning Commission

6. Front and side view, camera facing
southwest

7. 40 of 94



1. Residence, Cannelton Historic District
2. Cannelton, IN
3. Kay Anne Peake
4. 1. Latimer House, Cannelton Historic District
5. Indiana 15 Regional Planning Commission
6. 2. Cannelton, IN; camera facing north
7. 3. Kay Anne Peake
4. 5/1984 [6#21]
5. Indiana 15 Regional Planning Commission
6. Front and side view, camera facing northwest
7. 41 of 94



1. Josie Nicolay House, Cannelton Historic District
2. Cannelton, IN
3. Kay Anne Peake
4. 6/1984 [9#31]
5. Indiana 15 Regional Planning Commission
6. Front view, camera facing southeast
- 7.

42 of 94



1. Webb House, Cannelton Historic District
2. Cannelton, IN
3. Kay Anne Peake
4. 7/1984 [14#13]
5. Indiana 15 Regional Planning Commission
6. Front view, camera facing southeast
- 7.

43 of 94



1. Residence, Cannelton Historic District
2. Cannelton, IN
3. Kay Anne Peake
4. 5/1984 [3#21]
5. Indiana 15 Regional Planning Commission
6. Front view, camera facing northeast

7. 44 of 94



1. Residence, Cannelton Historic District
2. Cannelton, IN
3. Kay Anne Peake
4. 5/1984 [4#18]
5. Indiana 15 Regional Planning Commission
6. Front and side view, camera facing southwest

7.

45 of 94



Kay Anne Peake

1. Jacob Heck House, Cannelton Historic District Regional Planning Commission
2. Cannelton, IN view, camera facing north
3. Kay Anne Peake
4. 5/1984 [5#16]
5. Indiana 15 Regional Planning Commission
6. Front and side view, camera facing northwest

7. 46 of 94



1. Fred Hafele House, Cannelton Historic District
2. Cannelton, IN
3. Kay Anne Peake
4. 5/1984 [5#18]
5. Indiana 15 Regional Planning Commission
6. Front and side view, camera facing northwest

7. 47 of 94



1. Residence, Cannelton Historic District
2. Cannelton, IN
3. Kay Anne Peake
4. 7/1984 [10#15]
5. Indiana 15 Regional Planning Commission
6. Front and side view, camera facing south

7. 48 of 94



1. Residence, Cannelton Historic District
2. Cannelton, IN
3. Kay Anne Peake
4. 4/1984 [2#20]
5. Indiana 15 Regional Planning Commission
6. Front view, camera facing northeast

7. 49 of 94



1. Residence, Cannelton Historic District
2. Cannelton, IN
3. Kay Anne Peake
4. 4/1984 [2#7]
5. Indiana 15 Regional Planning Commission
6. Front view, camera facing east

7. 50 of 94



1. Residence, Cannelton Historic District
2. Cannelton, IN
3. Kay Anne Peake
4. 5/1984 [4#14]
5. Indiana 15 Regional Planning Commission
6. Back and side view, camera facing south
- 7.

51 of 94



1. St. Michael's Nun's Home, Cannelton
Historic District
2. Cannelton, IN
3. Kay Anne Peake
4. 5/1984 [3#17]
5. Indiana 15 Regional Planning Commission
6. Front and side view, camera facing
northeast

7.

52 of 94



1. Sandstone uses: sidewalk, Cannelton
Historic District Taylor ST
2. Cannelton, IN
3. Kay Anne Peake
4. 7/1984 [12#18]
5. Indiana 15 Regional Planning Commission
6. View with camera facing northeast



1. Sandstone uses: stone steps and retaining wall (also photo 142), Cannelton Historic District
2. Cannelton, IN
3. Kay Anne Peake
4. 6/1984 [9#2]
5. Indiana 15 Regional Planning Commission
6. View with camera facing north

FOURTH 73



4th ST
MADISON

1. Sandstone uses: stone retaining wall,
Cannelton Historic District
2. Cannelton, IN
3. Kay Anne Peake
4. 6/1984 [9#6]
5. Indiana 15 Regional Planning Commission
6. View with camera facing east
- 7.

55 of 94



1. Washington St. from Fifth St. to Richardson St., Cannelton Historic District
2. Cannelton, IN
3. Kay Anne Peake
4. 5/1984 [6#7]
5. Indiana 15 Regional Planning Commission
6. View with camera facing northeast

7. 56 of 94



1. Washington St. from First St. to Richardson St., Cannelton Historic District
2. Cannelton, IN
3. Kay Anne Peake
4. 5/1984 [6#18]
5. Indiana 15 Regional Planning Commission
6. View with camera facing northeast
7. -

57 of 94



1. Can-Tex Building, Cannelton Historic District
2. Cannelton, IN
3. Kay Anne Peake
4. 5/1984 [6#9]
5. Indiana 15 Regional Planning Commission
6. Front view, camera facing west

7. 58 of 94



SPEED
LIMIT
20

1. Washington St. from Seventh St. to Sixth St., Cannelton Historic District
2. Cannelton, IN
3. Kay Anne Peake
4. 11/1984 [15#1]
5. Indiana 15 Regional Planning Commission
6. View with camera facing west
- 7.

59 of 94



1. Washington St. from Sixth St. to Fifth St., Cannelton Historic District
2. Cannelton, IN
3. Kay Anne Peake
4. 11/1984 [15#2]
5. Indiana 15 Regional Planning Commission
6. View with camera facing west
- 7.

60 of 94



1. Washington St. from Fifth St. to Fourth St., Cannelton Historic District
2. Cannelton, IN
3. Kay Anne Peake
4. 11/1984 [15#3]
5. Indiana 15 Regional Planning Commission
6. View with camera facing west
- 7.

61 of 94



1. Jeffrey's Building, Cannelton Historic District
2. Cannelton, IN
3. Kay Anne Peake
4. 7/1984 [9#25]
5. Indiana 15 Regional Planning Commission
6. Front and side view, camera facing east

7. 62 of 94



Joe's Quality Hardware

THE CROWN BAR & GRILL

EXIT ONLY

3 2

1. Washington St. from Fourth St. to Richardson St., Cannelton Historic District
2. Cannelton, IN
3. Kay Anne Peake
4. 6/1984 [9#18]
5. Indiana 15 Regional Planning Commission
6. View with camera facing northeast
- 7.

63 of 94



1. Washington St. from Fourth St. to Smith St., Cannelton Historic District
2. Cannelton, IN
3. Kay Anne Peake
4. 6/1984 [9#19]
5. Indiana 15 Regional Planning Commission
6. View with camera facing southwest
- 7.

64 of 94



1. Taylor St. from Sixth St. to Fourth St.,
Cannelton Historic District
2. Cannelton, IN
3. Kay Anne Peake
4. 11/1984 [15#20]
5. Indiana 15 Regional Planning Commission
6. View with camera facing southwest

7.

65 OF 94



1. Taylor St. from Third St. to First St.,
Cannelton Historic District
2. Cannelton, IN
3. Kay Anne Peake
4. 11/1984 [16#3]
5. Indiana 15 Regional Planning Commission
6. View with camera facing southwest

7.  66 of 94



1. Adams St. from Seventh St. to Fifth St.,
Cannelton Historic District
2. Cannelton, IN
3. Kay Anne Peake
4. 11/1984 [17#3]
5. Indiana 15 Regional Planning Commission
6. View with camera facing west

7. 67 of 894



1. Adams St. from Fourth St. to Fifth St.,
Cannelton Historic District
2. Cannelton, IN
3. Kay Anne Peake
4. 11/1984 [15#16]
5. Indiana 15 Regional Planning Commission
6. View with camera facing northeast

7. 68 OF 94



ALL INFORMATION CONTAINED
HEREIN IS UNCLASSIFIED

SAMS
TAVERN

FREE
PHONE

1. Commercial Building, Cannelton Historic District
2. Cannelton, IN
3. Kay Anne Peake
4. 6/1984 [9#24]
5. Indiana 15 Regional Planning Commission
6. Front and side view, camera facing east

7. 69 of 94



1. Madison St. from Fifth St. to Seventh St., Cannelton Historic District
2. Cannelton, IN
3. Kay Anne Peake
4. 11/1984 [16#17]
5. Indiana 15 Regional Planning Commission
6. View with camera facing east
- 7.

20 of 94



1. Seventh St. from Adams St. to Madison St., Cannelton Historic District
2. Cannelton, IN
3. Kay Anne Peake
4. 11/1984 [17#4]
5. Indiana 15 Regional Planning Commission
6. View with camera facing northwest

7. 71 of 94



1. Seventh St. from Adams St. to Washington St., Cannelton Historic District
2. Cannelton, IN
3. Kay Anne Peake
4. 11/1984 [17#1]
5. Indiana 15 Regional Planning Commission
6. View with camera facing east

7. 72 of 94



ST. MICHAEL'S
CATHOLIC CHURCH
"WELLS WELCOME"

GENERAL
DELIVERY

BALDWIN & BERRY
ATTORNEYS AT LAW

1. Seventh St. from Washington St. to Taylor St., Cannelton Historic District
2. Cannelton, IN
3. Kay Anne Peake
4. 5/1984 [4#7]
5. Indiana 15 Regional Planning Commission
6. View with camera facing southeast

7. 73 of 94



1. Seventh St. from Taylor St. to Congress St., Cannelton Historic District
2. Cannelton, IN
3. Kay Anne Peake
4. 5/1984 [3#33]
5. Indiana 15 Regional Planning Commission
6. View with camera facing southeast

7.

74 of 94



. Seventh St. from Hoskinson St. to
. Congress St., Cannelton Historic District
. Cannelton, IN
. Kay Anne Peake
. 11/1984 [17#11]
. Indiana 15 Regional Planning Commission
. View with camera facing north

75 OF 94



1. Seventh St. from Adams St. to Madison St., Cannelton Historic District
2. Cannelton, IN
3. Kay Anne Peake
4. 11/1984 [17#2]
5. Indiana 15 Regional Planning Commission
6. View with camera facing northwest
- 7.

76 of 94



1. Seventh St. from Washington St. to Adams St., Cannelton Historic District
2. Cannelton, IN
3. Kay Anne Peake
4. 11/1984 [17#5]
5. Indiana 15 Regional Planning Commission
6. View with camera facing northwest
- 7.

77 of 94



1. Seventh St. from Congress St. to Taylor St., Cannelton Historic District
2. Cannelton, IN
3. Kay Anne Peake
4. 11/1984 [17#15]
5. Indiana 15 Regional Planning Commission
6. View with camera facing northwest

7. 28 of 94



1. Seventh St. from Congress St. to Hoskinson St., Cannelton Historic District
2. Cannelton, IN
3. Kay Anne Peake
4. 11/1984 [17#14]
5. Indiana 15 Regional Planning Commission
6. View with camera facing south

7. 79 of 94



1. Fifth St. from Adams St. to Madison St.,
Cannelton Historic District
2. Cannelton, IN
3. Kay Anne Peake
4. 11/1984 [16#15]
5. Indiana 15 Regional Planning Commission
6. View with camera facing northwest

7. 80 of 94



1. Fifth St. from Adams St. to Madison St.,
Cannelton Historic District
2. Cannelton, IN
3. Kay Anne Peake
4. 11/1984 [16#18]
5. Indiana 15 Regional Planning Commission
6. View with camera facing northwest
- 7.

81 of 94



1. Fifth St. from Adams St. to Washington St., Cannelton Historic District
2. Cannelton, IN
3. Kay Anne Peake
4. 11/1984 [16#20]
5. Indiana 15 Regional Planning Commission
6. View with camera facing southeast

7. 82 of 94



1. Fifth St. from Washington St. to Taylor St., Cannelton Historic District
2. Cannelton, IN
3. Kay Anne Peake
4. 11/1984 [16#11]
5. Indiana 15 Regional Planning Commission
6. View with camera facing southeast
- 7.

83 of 94



1. Fourth St. from Madison St. to Adams St.,
Cannelton Historic District
2. Cannelton, IN
3. Kay Anne Peake
4. 11/1984 [15#11]
5. Indiana 15 Regional Planning Commission
6. View with camera facing south

7.

84 of 94



FRESH
CORNELL
LOCAL
TALK

SPEED
LIMIT
30

1. Fourth St. from Washington St. to Taylor St., Cannelton Historic District
2. Cannelton, IN
3. Kay Anne Peake
4. 11/1984 [15#17]
5. Indiana 15 Regional Planning Commission
6. View with camera facing southeast
- 7.

85 of 94



1. Third St. from Taylor St. to Washington St., Cannelton Historic District
2. Cannelton, IN
3. Kay Anne Peake
4. 11/1984 [16#4]
5. Indiana 15 Regional Planning Commission
6. View with camera facing northwest

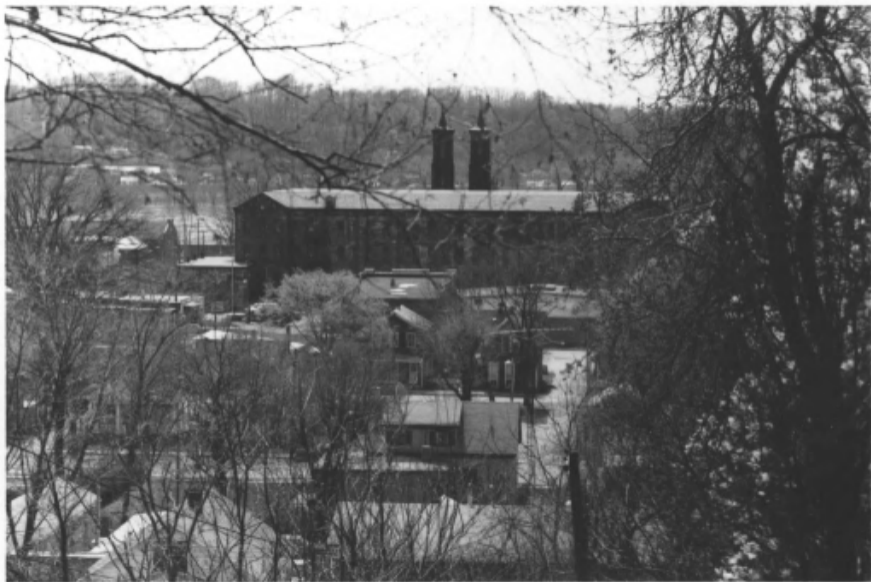
7.

86 of 94



1. Second St. from Taylor St. to Washington St., Cannelton Historic District
2. Cannelton, IN
3. Kay Anne Peake
4. 11/1984 [16#5]
5. Indiana 15 Regional Planning Commission
6. View with camera facing northwest
- 7.

87 of 94



1. Cannelton from bluffs behind St. Michael's Church, Cannelton Historic District
2. Cannelton, IN
3. Kay Anne Peake
4. 4/1984 [1#35]
5. Indiana 15 Regional Planning Commission
6. View with camera facing southwest
- 7.

88 of 94



1. Sixth St. from Washington St. to Adams St., Cannelton Historic District
2. Cannelton, IN
3. Kay Anne Peake
4. 11/1984 [16#13]
5. Indiana 15 Regional Planning Commission
6. View with camera facing west
7. 89 of 94



1. Indiana Cotton Mill, Cannelton Historic District
2. Cannelton, IN
3. Kay Anne Peake
4. 7/1984 [13#18]
5. Indiana 15 Regional Planning Commission
6. Back view, camera facing northwest

7.

90 of 94



1. St. Michael's Church, Cannelton Historic District
2. Cannelton, IN
3. Kay Anne Peake
4. 7/1984 [11#25]
5. Indiana 15 Regional Planning Commission
6. Front view, camera facing northeast
- 7.

91 of 74



1. Sandstone Commercial Building, Cannelton
Historic District
2. Cannelton, IN
3. Kay Anne Peake
4. 5/1984 [4#5]
5. Indiana 15 Regional Planning Commission
6. Front view, camera facing northeast

7. 92 of 94



CANNEL
HOUSE
1850-1860

1. Commercial Building, Cannelton Historic District
2. Cannelton, IN
3. Kay Anne Peake
4. 7/1984 [14#9]
5. Indiana 15 Regional Planning Commission
6. Front and side view, camera facing east
- 7.

93 of 94



1. Rosenblatt's Store, Cannelton Historic District
2. Cannelton, IN
3. Kay Anne Peake
4. 7/1984 [13#19]
5. Indiana 15 Regional Planning Commission
6. Side view, camera facing south

7. 94 of 94