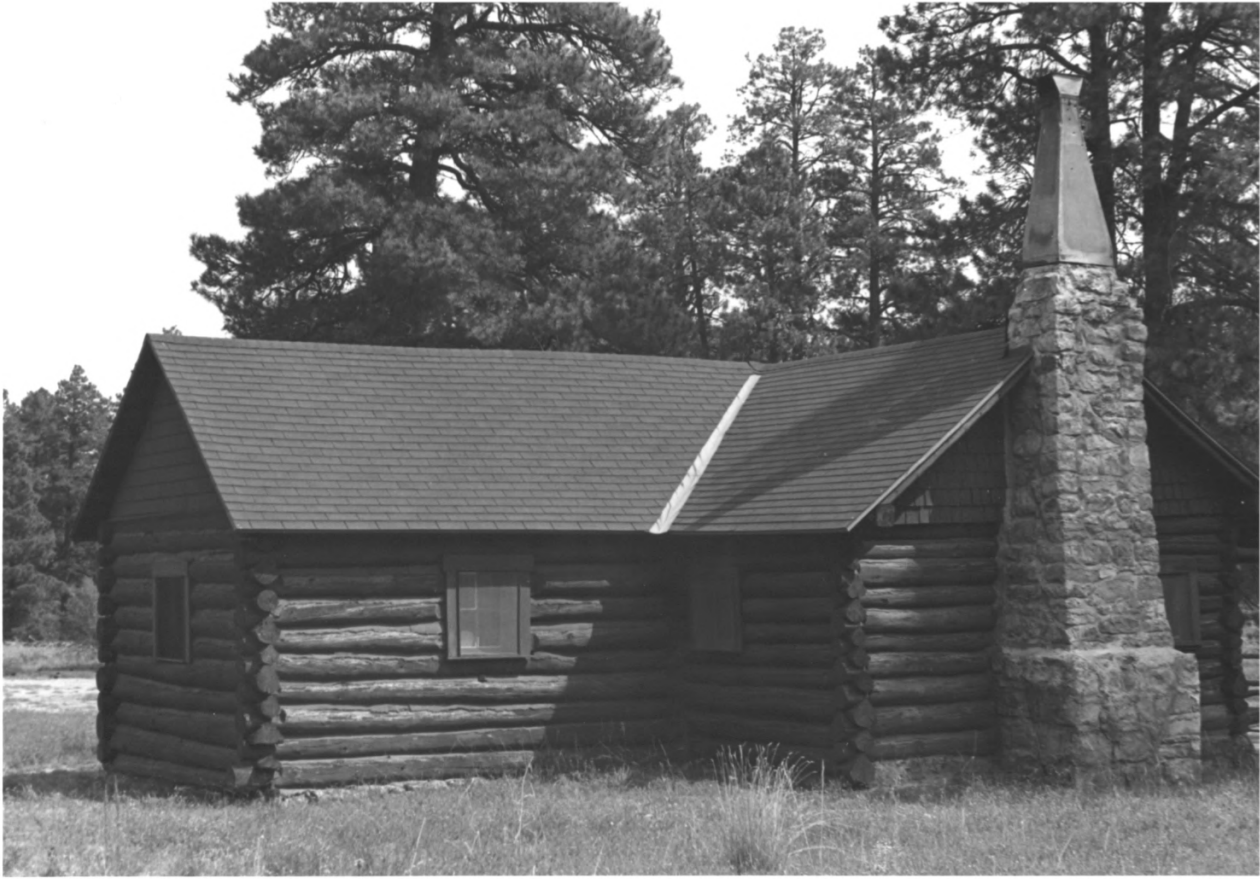




- 1). Hull Cabin.
- 2). Vicinity of Grand Canyon South Rim
- 3). Photographer: Teri A. Cleeland
- 4). Photo Date: October 1984
- 5). Negative at: Kaibab National Forest,
Williams, Arizona
- 6). View looking: west, of east elevation
- 7). Photo Number: 1



- 1). Hull Cabin
- 2). Vicinity of Grand Canyon South Rim
- 3). Photographer: Teri A. Cleeland
- 4). Photo Date: October 1984
- 5). Negative at: Kaibab National Forest,
Williams, Arizona
- 6). View looking: south, of north elevation
- 7). Photo Number: 2



- 1). Hull Cabin
- 2). Vicinity of Grand Canyon South Rim
- 3). Photographer: Teri A. Cleeland
- 4). Photo Date: October, 1984
- 5). Negative at: Kaibab National Forest,
Williams, Arizona
- 6). View Looking: northeast, of south and
west elevations
- 7). Photo Number: 3



- 1). Hull Cabin Complex
- 2). Vicinity of Grand Canyon South Rim
- 3). Photographer: Terri A. Cleeland
- 4). Photo Date: October, 1984
- 5). Negative at: Kaibab National Forest,
Williams, Arizona
- 6). View looking, north, of storage cabin,
barn, and Hull Cabin (left to right)
- 7). Photo Number: 4



- 1). Hull Storage Cabin
- 2). Vicinity of Grand Canyon South Rim
- 3). Photographer: Teri A. Cleeland
- 4). Photo Date: October, 1984
- 5). Negative at: Kaibab National Forest,
Williams, Arizona
- 6). View looking: southwest, of east and
north elevations
- 7). Photo Number: 5



- 1). Hull Storage Cabin
- 2). Vicinity of Grand Canyon South Rim
- 3). Photographer: Teri A. Cleeland
- 4). Photo Date: October, 1984
- 5). Negative at: Kaibab National Forest,
Williams, Arizona
- 6). View Looking: northeast, of west and
south elevations
- 7). Photo Number: 6



- 1). Hull Storage Cabin
- 2). Vicinity of Grand Canyon South Rim
- 3). Photographer: Teri A. Cleeland
- 4). Photo Date: October, 1984
- 5). Negative at: Kaibab National Forest,
Williams, Arizona
- 6). View looking: detail of southeast
corner, V-notching
- 7). Photo Number: 7



- 1). Hull Barn
- 2). Vicinity of Grand Canyon South Rim
- 3). Photographer: Teri A. Cleeland
- 4). Photo Date: October 1984
- 5). Negative at: Kaibab National Forest,
Williams, Arizona
- 6). View looking: Southwest , of east and
north elevations
- 7). Photo Number: 8



- 1). Hull Barn
- 2). Vicinity of Grand Canyon South Rim
- 3). Photographer: Teri A. Cleeland
- 4). Photo Date: October, 1984
- 5). Negative at: Kaibab National Forest,
Williams, Arizona
- 6). View Looking: northwest, of south and
east elevations
- 7). Photo Number: 9



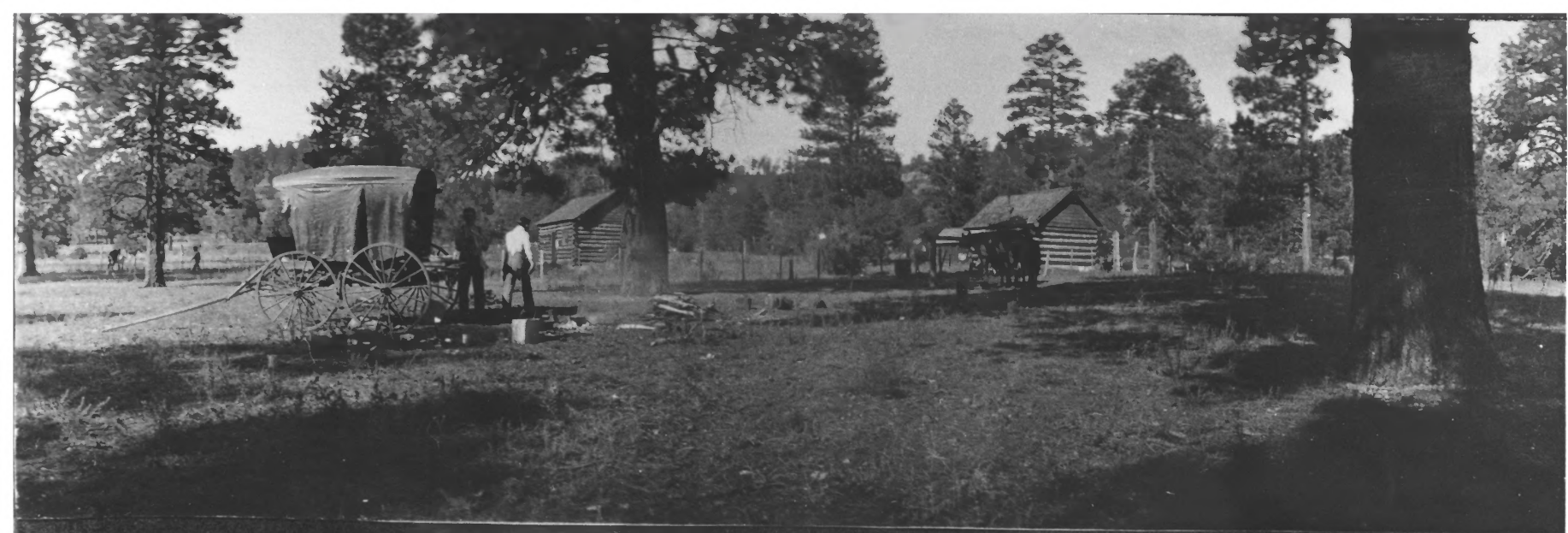
- 1). Hull Barn
- 2). Vicinity of Grand Canyon South Rim
- 3). Photographer: Teri A. Cleeland
- 4). Photo Date: October, 1984
- 5). Negative at: Kaibab National Forest
Williams, Arizona
- 6). View looking: detail of southeast
corner, full-dovetail notching
- 7). Photo Number: 10



- 1). Hull Tank
- 2). Vicinity of Grand Canyon South Rim
- 3). Photographer: Teri A. Cleeland
- 4). Photo Date: October, 1984
- 5). Negative at: Kaibab National Forest,
Williams, Arizona
- 6). View looking: north, of embankment
- 7). Photo Number: 11



- 1). Hull Cabin
- 2). Vicinity of Grand Canyon South Rim
- 3). Photographer: Teri A. Cleeland
- 4). Photo Date: October, 1984
- 5). Negative at: Kaibab National Forest,
Williams, Arizona
- 6). View looking: north, detail of south
elevation
- 7). Photo Number:.12



Hull Forks.

- 1). Name: Hull Cabin
- 2). Location: vicinity of Grand Canyon, Arizona
- 3). Photo Date: between 1901 and 1903
- 4). Photo by: Vary
- 5). Negative at: Museum of Northern Arizona, Flagstaff
- 6). View: Southwest
- 7). Photo Number: 13



- 1). Hull Cabin
- 2). Vicinity of Grand Canyon South Rim
- 3). View: Southwest
- 4). Photo By: Kolb (?)
- 5). Photo Date: c. 1910
- 6). Negative at: Special Collections, NAU
- 7). Photo of: Hull Cabin, north and east elevations.
- 8). Photo Number: 14

KAIBAB National Forest

HULL CABIN

This cabin was built by Phillip and William Hull in 1889 for use as a sheep camp. It was purchased in 1907 by the Forest Service and used until 1940 as a summer ranger station with winter headquarters located 20 miles southwest, at Anita. Hull Cabin today serves as a Forest Service work center for summer crews.

U.S. DEPARTMENT
OF AGRICULTURE



- 1). Hull Cabin Complex
- 2). Vicinity of Grand Canyon South Rim
- 3). Photographer: Teri A. Cleeland
- 4). Photo Date: October, 1984
- 5). Negative at: Kaibab National Forest,
Williams, Arizona
- 6). View looking: west, of interpretive sign
- 7). Photo Number: 15