



1. Cambria Casino-~~Park Memorial~~

2. Newcastle, Wyoming

3. Mark Junge

4. May, 1975

5. Wyoming Recreation Commission

6. View is toward the north, looking up

Salt Creek Canyon at the south face of
the Flying V Cambria Inn. The road at
left is the old U. S. Highway 85.

7. Number 1/8

Weston Co.

NOV 18 1980

SEP 16 1980



1. Cambria Casino-~~Park Memorial~~

2. Newcastle, Wyoming

3. Mark Junge

Weston Co.

4. May, 1975

NOV 18 1980

5. Wyoming Recreation Commission

6. View is toward the southwest, looking at the Flying V Cambria Inn from a point on the east side of Salt Creek. Road above, and west of, the Inn is U. S. 85.

7. Number 2/8

SEP 16 1980



Cambria ~~Inn~~ Casino
Newcastle, Wyoming

Weston Co. May, 1975

View is east, looking at Cambria Inn
Ballroom.

Photographer: Mark Junge
Wyoming Recreation Commission SHPO

#3/8

SEP 16 1980

NOV 18 1980



Cambria ~~Inn~~ Casino
Newcastle, Wyoming

May, 1975

Weston Co.

View is toward the east, looking at tower
and main facade of FYO Inn.

Photographer: Mark Junge
Wyoming Recreation Commission SHPO

#4/4

SEP 16 1980

18 1980



Cambria ~~Inn~~ Casino
Newcastle, Wyoming

May, 1975

Weston Co.

View is NE, looking at main facade of
Casino.

NOV 18 1980

Photographer: Mark Junge
Wyoming Recreation Commission SHPO

#5/8

SEP 23 1980



Cambria ~~Inn~~ Casino
Newcastle, Wyoming

May, 1975

Weston co.

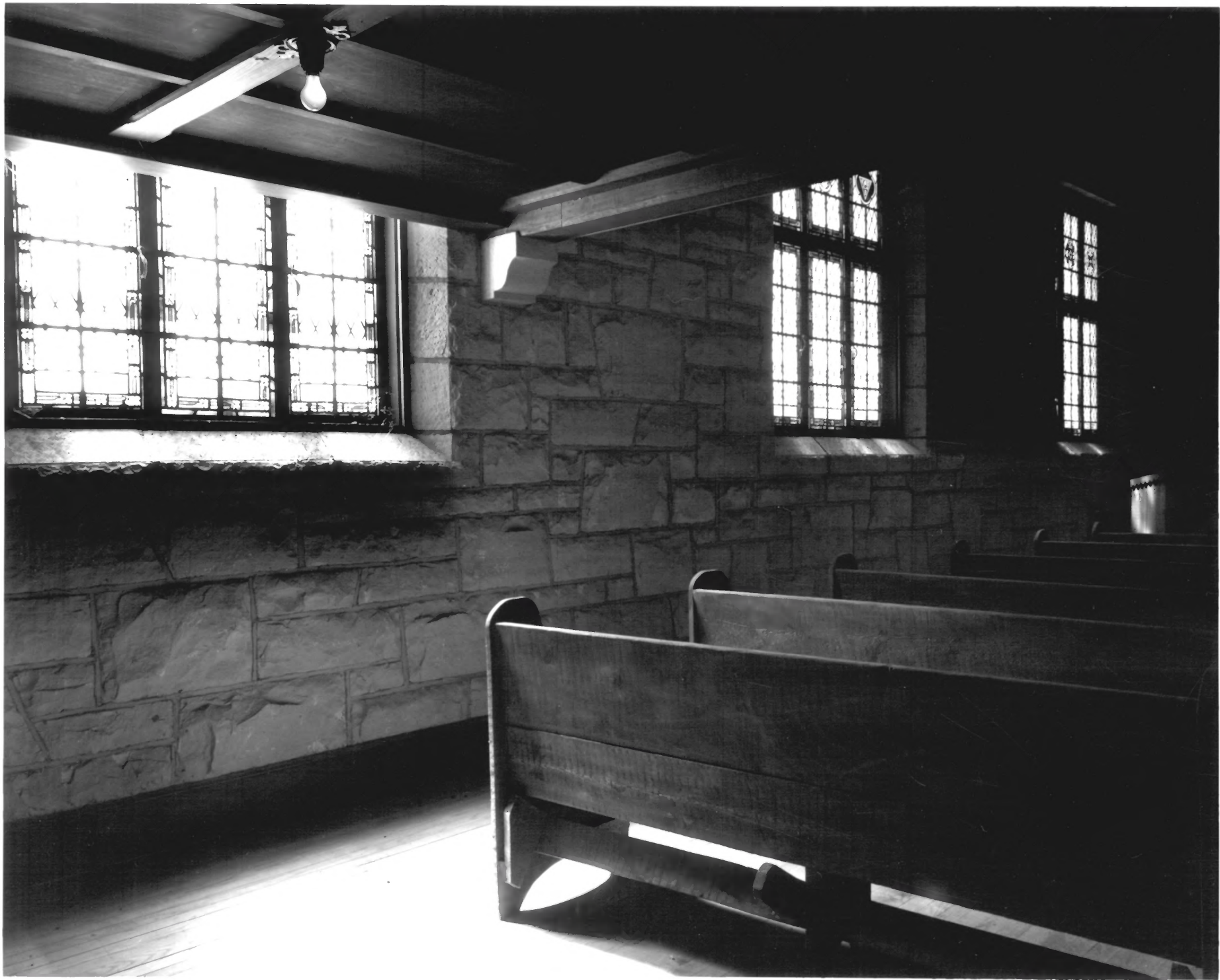
View is NW, lookin at main dining room.

Photographer: Mark Junge
Wyoming Recreation Commission SHPO

#6 / 8

SEP 16 1980

NOV 18 1980



Cambria ~~Inn~~ Casino
Newcastle, Wyoming

May, 1975
Weston CO,

View is toward the north, looking at
original museum.

NOV 18 1980

Photographer: Mark Junge
Wyoming Recreation Commission SHPO

#7/8

SEP 16 1980



8-8-78

Slide-Flying V

SEP. 7041

811-2-2

3000 AG

8 4 1

Cambria Casino
Weston Co.

SEP 16 1980

my

8/8