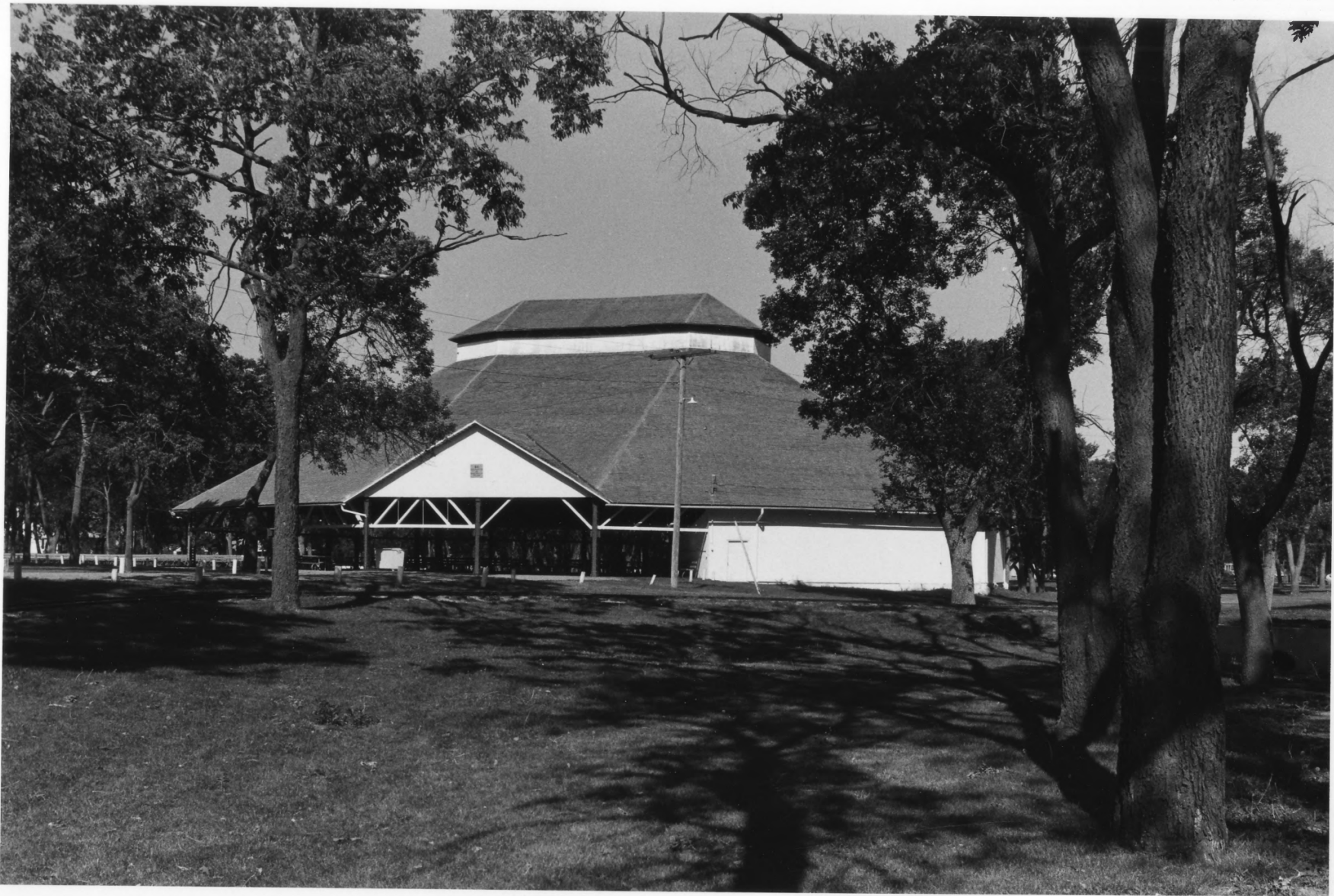


PROPERTY OF THE NATIONAL REGISTER

P2
063-0158

Photo #106 OCT 19 1978 MAY 15 1978
Chautauqua Pavilion, Hastings, Nebraska
J. Jeffries, NSHS, June, 1976 (7606/28:21)
Nebraska State Historical Society
General View of the North Front, Looking
south. Adams County



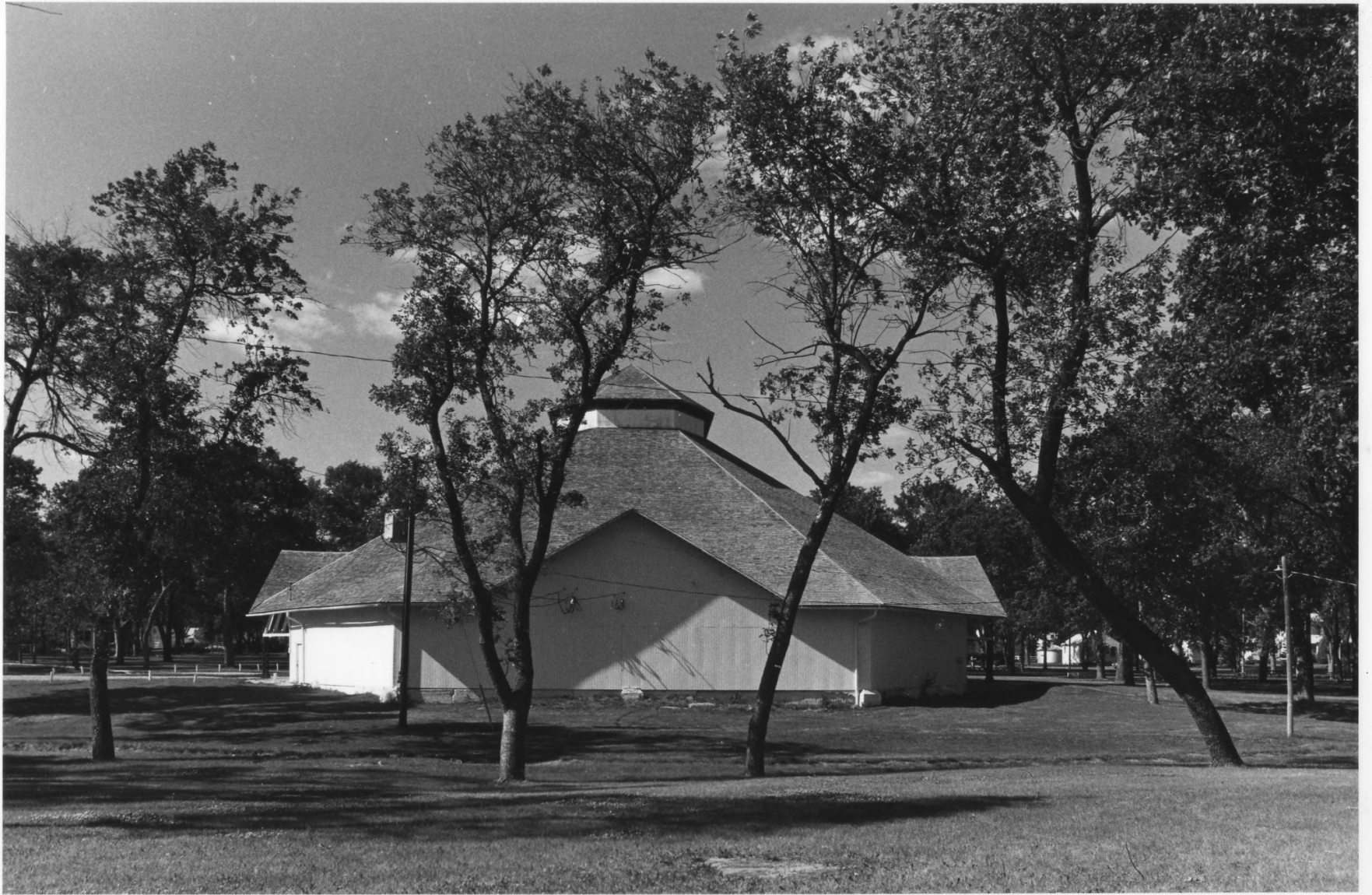
PROPERTY OF THE NATIONAL REGISTER

Photo #2 ⁸⁶
Chautauqua Pavilion, Hastings, Nebraska
D. Murphy, NSHS, June, 1976 (7606/21:20)
Nebraska State Historical Society
General view of the west elevation,
looking east.
Adams County

OCT 19 1978

MAY 15 1978

P3 (=P1)



PROPERTY OF THE NATIONAL REGISTER

7686/21:19 P1 Q63-0.66

Adams County

Photo #396

OCT 19 1978 MAY 15 1978

Chautauqua Pavilion, Hastings, Nebraska

D. Murphy, NSHS, June 1976 (7606/21:19)

Nebraska State Historical Society

General view of the stage end of the
building, looking north.



PROPERTY OF THE NATIONAL REGISTER

Adams County

Photo ~~406~~ ⁴⁰⁶ OCT 19 1978 MAY 15 1978
Chautauqua Pavilion, Hastings, Nebraska
D. Murphy, NSHS, June 1976 (7606/21:32)
Nebraska State Historical Society
Detail view of one of the two spans of
Howe trusses along each side of the
building at the eave line, looking east.

7606/21:32
463-307-7158



PROPERTY OF THE NATIONAL REGISTER

7606/21:30

ALP2-35622

RB04

Photo #5 *2C* **OCT 19 1978** **MAY 15 1978**
Adams County
Chautauqua Pavilion, Hastings, Nebraska
D. Murphy, NSHS, June 1976 (7606/21:30)
Nebraska State Historical Society
View of the interior showing the stage,
choirs and orchestra pit, looking south.



PROPERTY OF THE NATIONAL REGISTER

Photo ⁶⁸⁶ **MAY 15 1978**
Chautauqua Pavilion, Hastings, Nebraska
D. Murphy, NSHS, June, 1976 (7606/21:25)
Nebraska State Historical Society
Interior view showing the two tiers of
lattice-braced columns and the lower end
of the triangular truss they support. Also
shows triangular trusses which support the
subsidiary purlin between the two tiers of
columns. Looking southwest.

Adams County

OCT 19 1978

06P2-50

7606/21:25