

MAY 22 2015

National Register of Historic Places Registration Form

Nat. Register of Historic Places
National Park Service

This form is for use in nominating or requesting determinations for individual properties and districts. See instructions in National Register Bulletin, *How to Complete the National Register of Historic Places Registration Form*. If any item does not apply to the property being documented, enter "N/A" for "not applicable." For functions, architectural classification, materials, and areas of significance, enter only categories and subcategories from the instructions. Place additional certification comments, entries, and narrative items on continuation sheets if needed (NPS Form 10-900a).

1. Name of Property

Historic name Grant School

Other names/site number Grant Junior High; khri#181-2110-00008

Name of related Multiple Property Listing Historic Public Schools of Kansas

2. Location

Street & number 520 W. 12th Street not for publication

City or town Goodland vicinity

State Kansas Code KS County Sherman Code 181 Zip code 67735

3. State/Federal Agency Certification

As the designated authority under the National Historic Preservation Act, as amended,

I hereby certify that this nomination request for determination of eligibility meets the documentation standards for registering properties in the National Register of Historic Places and meets the procedural and professional requirements set forth in 36 CFR Part 60.

In my opinion, the property meets does not meet the National Register Criteria. I recommend that this property be considered significant at the following level(s) of significance:

national statewide local Applicable National Register Criteria: A B C D

Patrick Zollner 5-14-15
Signature of certifying official/Title Patrick Zollner, Deputy SHPO Date

Kansas State Historical Society
State or Federal agency/bureau or Tribal Government

In my opinion, the property meets does not meet the National Register criteria.

Signature of commenting official Date

Title State or Federal agency/bureau or Tribal Government

4. National Park Service Certification

I hereby certify that this property is:

entered in the National Register determined eligible for the National Register

determined not eligible for the National Register removed from the National Register

other (explain:)

For Edson H. Beall 7-7-15
Signature of the Keeper Date of Action

Grant School
Name of Property

Sherman County, Kansas
County and State

5. Classification

Ownership of Property
(Check as many boxes as apply.)

Category of Property
(Check only **one** box.)

Number of Resources within Property
(Do not include previously listed resources in the count.)

<input type="checkbox"/>	private
<input checked="" type="checkbox"/>	public - Local
<input type="checkbox"/>	public - State
<input type="checkbox"/>	public - Federal

<input checked="" type="checkbox"/>	building(s)
<input type="checkbox"/>	district
<input type="checkbox"/>	site
<input type="checkbox"/>	structure
<input type="checkbox"/>	object

Contributing	Noncontributing	
1	1	buildings
		sites
		structures
		objects
1	1	Total

Number of contributing resources previously listed in the National Register

0

6. Function or Use

Historic Functions
(Enter categories from instructions.)

Current Functions
(Enter categories from instructions.)

EDUCATION: school

EDUCATION: school

7. Description

Architectural Classification
(Enter categories from instructions.)

Materials
(Enter categories from instructions.)

LATE 19th and 20th CENTURY REVIVALS:

Late Gothic Revival

foundation: Concrete

walls: Brick

roof: Asphalt

other: Stone detailing

Grant School
Name of Property

Sherman County, Kansas
County and State

Narrative Description

(Describe the historic and current physical appearance and condition of the property. Describe contributing and noncontributing resources, if applicable. Begin with a **summary paragraph** that briefly describes the general characteristics of the property, such as its location, type, style, method of construction, setting, size, and significant features. Indicate whether the property has historic integrity.)

Summary

Grant School is a two-story Late Gothic Revival-style building located five blocks west of downtown Goodland in a residential neighborhood. The original school site is an L-shaped configuration comprised of parts of two city blocks and including a spacious playground/athletic field. Constructed in 1926, the school faces east and is positioned on the east end of the site fronting a walkway that spans the full depth of the site from 12th Street on the south and 11th Street on the north. The building footprint is a modified T-shape with a combined gymnasium/auditorium forming a center stem on the west/rear. The symmetrical front facade is defined by projecting gabled end bays and a pyramidal capped-tower at the central entrance. Secondary entrances, defined by a gabled-wall dormer, are located on the north and south sides off 11th and 12th Streets respectively. The school was constructed of variegated dark red brick with a concrete foundation and ashlar limestone detailing. It has an intersecting gable roof with a truncated gable roof on the rear-projecting gymnasium wing. The building facades feature projecting bays, buttresses, and quoined stone surrounds. The school, although not a classic example of the style, embodies characteristics of the Collegiate Gothic style including a tower, gabled dormers, checkerboard detailing, and stone quoining. Vertical components including the three-story tower and gabled-wall dormers with full-height surrounds define the primary entry points. Designed by renowned school architects Mann & Co. of Hutchinson, Grant School reflects a rural Kansas interpretation of the Collegiate Gothic style - the most popular school style in the years following World War I. The school was constructed to meet the educational and budgetary needs of a growing grade school population in the mid-1920s in Goodland, Kansas.

Elaboration

Site

The school is located on a site within two city blocks bordered by 12th Street on the south, 11th Street on the north, Kansas Avenue on the east and Syracuse Avenue on the West. Montana Avenue, now vacated, bisects the site (north/south). The original school site was uniquely configured with the school sitting in the center of the two blocks facing east toward an alley. The building is addressed at 520 W. 12th Street; the south facade facing 12th Street. Early twentieth-century single-family homes are in place along Kansas Avenue east of the front of the school and along 11th Street northwest of the school. A walkway spans the full depth of the site from 12th Street to 11th Street framing a small grass lawn at the front of the school. Sidewalks also extend from 11th and 12th Streets to the north and south entrances. A small paved parking lot is located northeast of the school with a private residence located south of the front parking lot facing 12th Street. Paving is also located on each side of the rear gymnasium including basketball courts southwest of the school. The rear/southwest portion of the site is vacant land, a grass lot formerly used as an athletic field. The open area behind the school extends to Syracuse Avenue on the west and is bordered by the back yards of homes along 11th Street on the north. The rear lot is enclosed by a chain-link fence. A contemporary metal building, placed in 1976 for extra classrooms, is located immediately northwest of the school. This building will be removed from the site.

Early Sanborn Maps do not illustrate the neighborhood where the school would be constructed in 1926-27. Newspaper accounts of the site acquisition in 1926 after passage of the bond issue, report the purchase of numerous individual lots and the use of eminent domain to condemn and sell at least one home for removal from the site. The unique configuration of the site and position of the building on the site may reflect challenges acquiring lots for the school site.

Early photos of the school show playground equipment in the lawn in front/east and south of the school which is no longer extant. That equipment was likely removed when the school became a junior high in the 1960s.

Grant School
Name of Property

Sherman County, Kansas
County and State

The nominated site includes the area immediately around the school building and the front parking lot northeast of the school (Lots 7 – 18 and 25 – 35). At this time, the school district is retaining ownership of the open area west of the school building.

Exterior

Grant School is a two-story structure with a basement below the rear gymnasium wing. The footprint is a T-shape with a combined auditorium/gymnasium projecting from the center of the rear facade to form the stem of the rear-facing "T." The main section of the building, the classroom wing, is an I-shaped footprint oriented north/south with projecting classroom bays on the north and south ends.

The primary roof form is an intersecting gable pierced by a center entry tower with a pyramidal roof. Gabled wall dormers define secondary entrances on the north and south ends of the main classroom wing. The rear gymnasium is uniquely configured with a truncated hip roof that has twin gabled parapets on the west/rear facade. In addition to the pyramidal-roofed tower, the roofline is distinguished by a large square chimney and four tall rectangular ventilation shafts with gabled caps. All roofs were originally finished in red clay tile but have been replaced with brown composition shingles.

The exterior facade is variegated red brick over a concrete foundation. The brick is laid in a running bond with a Flemish bond course (alternating headers and stretchers) at every seventh course. Masonry detailing includes ashlar limestone, corbelled brick and surface patterns in stone and brick. The front facade is comprised of five distinct bays. Bays two and four comprise the body of the facade where buttressed pilasters with beveled stone caps frame two bands of six windows on each floor. A corbelled band of brick is located below the eave on the main body. The end bays (bays 1 & 5) on the front facade are defined by a projecting gabled bay with parapet. The brick parapet features a stone parapet cap and detailing. The only opening at the end bays is a narrow arched opening with quoined stone surround, located in the gable end. These openings were originally fixed-sash windows, formerly replaced with a solid wood panel. A subtle geometric pattern in the brick further distinguishes the end bays.

The center entry bay is defined by a three-story tower capped by a pyramidal roof rising above the main roof. Stone quoining and buttressed pilasters highlight the verticality of the tower. The tower projects slightly from the main body of the school with buttresses on each side. A stone surround frames three tall, narrow arched door openings and a quoined stone surround frame two windows above the entry. Narrow arched openings at the top of the tower were designed for louvers but now have a solid wood panel. At the front entrance, only the southern-most opening continues to serve as a door. The other two doors were formerly converted to windows when the school office was expanded into the front entry foyer. The original doors were 6-light over a single-panel wood door with 6-light arched transoms. The original transoms are extant; the existing door is a single-light metal replacement.

The north and south facades of the main school, facing 11th and 12th Streets respectively, provide direct street-front access at each end of the main corridor. These side facades are three bays wide with the center bay defined by a gabled wall dormer that features checker-board detailing at the gable end. The center bay is comprised of an entrance on the ground floor with a two-story quoined stone surround framing a pair of windows above the entry. The existing doors are a contemporary aluminum-framed glass replacement comprised of a pair of double-doors with narrow sidelights and a three-light transom. The original entrances were comprised of a single multi-light over single-panel wood door with matching sidelights and three multi-light transoms. The outer bays are comprised of a ribbon of six windows on each floor with twin pilasters framing the ends of the building. One window at the east end of the north facade has been converted to a door, providing exterior access into the lunchroom at the northeast corner of the first floor.

The west/rear facade is similar in basic composition to the front facade but lacking the detailing of the other three facades. The rear facade is comprised of five bays, the center bay being the projecting auditorium/gymnasium wing with the stage on the west end. The end bays are also projecting comprised of classrooms

Grant School
Name of Property

Sherman County, Kansas
County and State

at the each end of the main corridor. Like the gabled end-bays on the front facade, the only openings in the end bays on the rear facade were narrow arched fixed sash windows, formerly infilled with a solid wood panel. Bays 2 and 4, reflecting the main body of the classroom wing, are distinguished from the other facades by the window openings at the stairs. Twin stairways flank the central gymnasium and three single windows are stepped corresponding to the angle of the interior stairs. A secondary entrance is located at the ground floor, providing rear access at both stairs. A ribbon of four windows is located in the outer half of each bay, similar to the other classroom facades. An exterior fire stair is located on the 2nd floor at the intersection with the end bays. A distinguishing feature of the rear facade is four ventilation dormers that rise high above the roof-line, originally capped by a tile gabled roof. Two of these rectangular shafts align with the 2nd floor fire exits; the other two flank the auditorium/gymnasium wing near the backstage area. These shafts originally featured narrow arched openings with wood louvers, formerly replaced with wood panels.

The central wing is distinguished not only by its roof form, but also by its contrasting fenestration. The gymnasium/auditorium features large multi-light steel windows with operable center panels on the north and south facades. Additionally, a basement is located beneath this wing and conveyed by three-light hopper panels along the foundation on the west side. One-story shed pents on the north and south sides reflect a former modification to the original design. These were likely added to enclose the stairways in order to provide exterior access to the basement locker rooms. West of the stairs, a single door provides backstage exits on each side of the gymnasium/auditorium. The back stage area is also distinguished by stepped windows reflecting interior stairs down to restrooms below the stage.

A one-story gabled bay extends from the west/rear facade, between the gymnasium wing and south end bay. This brick bay has a single small square opening on the west facade and, although not shown on the original plans, was likely constructed as the boiler room, coal room, or other mechanical space. The area of the basement east of the locker rooms was used as mechanical space. This space is now used as the teachers' lounge.

The original masonry openings are intact around the building but the windows, originally 6/6 double-hung wood units on the main classroom wing, have been replaced with three-panel aluminum units. The top sash of the replacement windows is an opaque red panel. The windows are punched openings with simple stone sills. The narrow openings in the entry tower and ventilation shafts were originally wood louvers but have been infilled with solid panels. Similar tall, narrow openings at the gabled ends were originally multi-light fixed sash windows, also have been replaced with wood panels. However, the original multi-light steel windows in the auditorium/gymnasium remain although the glass has generally been replaced by solid panels. Some of these windows maintain a single row of glass lights at the bottom of the windows. The original basement windows on the west wall of the gymnasium remain in place unaltered. Like the windows, the exterior doors are all contemporary replacements including aluminum-framed glass doors and single-light metal slab doors within the original door openings. Original transoms remain at the front entry and foyer.

A defining characteristic of Grant School is the attention to detail in the treatment of the three primary facades and building entrances. The gymnasium/auditorium wing has more of a utilitarian or industrial design with simple brick facades and multi-light industrial steel windows. Incorporating numerous typical Collegiate Gothic details, the primary facade is articulated with projecting bays, buttresses, quoining, and other detailing. Fenestration including arched openings and varying stone surrounds at door and window openings further distinguish the primary facades.

Interior

Although the footprint of the school is a T-shape, the interior circulation is a simple rectangular form with a central corridor running north/south through the classroom wing. The combined gymnasium/auditorium is accessed directly from the first-floor corridor in the center of the west side opposite the front entrance. Side entrances, off 11th and 12th Streets, are located at each end of the main corridor and twin open stairways flank the central gymnasium. There were no foyers at the north and south entrances but the front/east entrance

Grant School
Name of Property

Sherman County, Kansas
County and State

was designed and constructed with a large foyer - a wood-framed enclosure featuring a pair of doors in the center flanked by single doors with a multi-light transom above. The office, originally located on the 2nd floor over the entrance, was later moved to the first floor inside the front entrance to the north. The office was later expanded into the foyer leaving a narrow corridor that aligns with the south door of the original entrance. The foyer doors have been removed but one of the multi-light transoms remains.

Typical of Progressive era schools, the primary circulation spaces all feature hard finishes deemed to be more durable and sanitary than wood. The corridor floors are terrazzo and the stairs are marble with wrought iron railings. The twin stairways flanking the gymnasium/auditorium are accessed through a flat arched opening in the corridor. A small glass-enclosed elevator/lift was formerly installed at the north stair.

Classrooms were located along the east side of the corridor, two rooms on each side of the central entrance and two classrooms flanking the north and south entrances at each end of the corridor. The kindergarten was located in the southwest corner with a private bathroom and private rear entrance. Otherwise, the kindergarten classroom was identical to the other classrooms with a built-in wardrobe and closet, and wood-framed chalk boards with chalk tray and tack space above. Although designed as classrooms, the two rooms at the north end of the first floor were later converted to a kitchen (northwest corner) and the lunchroom (northeast corner) with no substantive changes to the room configuration. Restrooms were located on the west side of the hallway on the first and second floors, flanking the stairways.

The second floor was configured almost identical to the first with eight classrooms. The only difference was the administrative offices, located on the 2nd floor over the main entrance on the ground floor and a small room at each end of the corridors above the secondary entrances on the ground floor. The office was comprised of a reception area and two small offices. The reception area was defined by windows in the corridor wall, a feature that was repeated in the wall between the reception area and offices. The office suite also included a room-size vault located at the north end of the reception area, accessed from the north office. The vault was manufactured by the Gross-Feibel Co. of Hillsboro, Ohio and remains in place. The original function of the small rooms at the ends of the corridor is undocumented but possibly a teachers' lounge, workroom, or small library.

The classrooms had plaster walls and hardwood floors. Carpet and VCT have been installed in most classrooms. Historic wood trim includes a chair rail, picture rail and baseboards throughout except in the corridors and restrooms where there is an integral terrazzo base. Window sills are exposed brick. Although the original plans call for "Celotex" ceilings in the classrooms, plaster ceilings are extant in most classrooms and in the corridors. Lighting has been replaced throughout, most being modern florescent units. Cast-iron radiators remain in place and window air-conditioning units have been installed in classrooms and offices.

The two-story rear wing was designed to serve the dual function of a gymnasium and auditorium. A stage is located on the north end, with a wood-cased proscenium. The wood stage was designed with paneled wood cabinet-style doors on the front for chair storage beneath the stage. Folding wood chairs were purchased when the school was built in order to accommodate flexible floor seating when the room was used as an auditorium. Without seating on the first floor, the space accommodated a regulation-sized basketball court. In this configuration, seating was provided with the folding chairs on the balcony. A narrow balcony spans three sides of the gymnasium (north, south and east) accessed from the landing of the main stairs. The gymnasium has a maple floor, likely a former replacement. The stage and balconies are wood, the latter with steel pipe railings and the original ceiling, "Celotex" with wood beams, is extant.

A basement is located below the auditorium/gymnasium wing. This area included restrooms and showers that could also function as dressings rooms for stage/auditorium productions. The balance of the basement is used as mechanical space and storage.

Grant School
Name of Property

Sherman County, Kansas
County and State

Ground breaking and excavation for the new school began in August 1926 and the building was to be ready the following year, for the 1927 school term. The local paper published the following description of the new school (a similar description published again in January).

The building will be two stories in height and of brick and lime [stone] construction. The brick used will be a dark rug faced type.¹ The trimming will be of light Bedford lime [stone]. The roof will be red tile, something unique in this part of the country. The building will face towards the east and there will be a 60-foot street running north and south between Eleventh and Twelfth Streets. The school will be set back 40 feet and there will be a terrace between the building and the street. The front of the building will be 217 feet in length and the depth will be 134 feet. The building will be T-shaped. The cost when completed will be \$130,000

There will be 16 classrooms, a locker room, and a combination gymnasium and auditorium. A kindergarten will also be built in connection. The gymnasium-auditorium will have a large stage at one end. A balcony will extend around the sides of the building. The gymnasium proper will measure 50 by 67 feet and when in use as an auditorium, it will measure 50 x 82 feet.

One of the features of the building will be an executive suite for use by executives of the faculty. There will also be restrooms for the teachers. The stairway balustrades will be of wrought iron. On the stairs will be marble treads and risers of the most modern type. Instead of the usual common terra cotta finishings in the hallways, the corridors will be finished in a high grade of terrazzo marble.²

The boiler room, coal storage and store room are located in the basement which covers the entire area of the gymnasium, approximately 50 x 80 feet. The girls' and boys' shower rooms are located in the basement.³

Many of the original features and finishes remain in place. Constructed in 1926, Grant School served grades K-8 until 1953 and then grades K-6 another fourteen years, until 1969. Upon completion of two new elementary schools, the elementary grades vacated Grant School and grades 7th and 8ths moved into the school. It became Grant Junior High and has served that function for the past forty-six years. This change in use resulted in only minor alterations to the original building.

Alterations

School district records regarding past alterations were not made available therefore it is difficult to date many of the former alterations.

The primary interior modification occurred first when the school offices were moved from their 2nd floor location to the first floor north of the main entrance. A former classroom was subdivided into a reception area and three offices. The office was later expanded into the entry foyer. The office spanned across two of the three doors at the front entry enclosing two-thirds of the front entry foyer. The non historic walls have a paneled wall finish and are easily distinguished from the original plaster wall construction. Although intrusive, the office expansion into the front foyer is an easily reversible alteration.

The original office on the second floor was converted to the library and a large opening was cut into the shared wall with the classroom south of the library. The original reception and office walls were removed but the vault remains as do the windows in the corridor wall (into the former reception area).

¹Rug-type brick was first sold in 1922. It was a combination of red brick, typical in warm variegated tones with a surface texture similar to a rug.

²"New School Ranks Among Best," *Goodland News-Republic*, 26 August 1926.

³"Building Ranks with Best," *Goodland News-Republic*, 27 January 1927.

Grant School
Name of Property

Sherman County, Kansas
County and State

The two classrooms on the north end of the first floor were converted to a kitchen and lunchroom with no major modification to the original classrooms.

With the exception of the office relocation and expansion, few interior modifications significantly diminish historic integrity. Classrooms generally retain their historic finishes and features. The doors of most wardrobes/cloak closets have formerly been removed and the alcoves converted to shelving or modern cabinets but the original configuration and frame remain. Original chalkboards and closets, interior doors and windows are extant at most classrooms. Carpet or VCT tile has been installed over original wood floor in most locations but the hard wood floor is in place underneath. With few exceptions, the classrooms have plaster walls and ceilings.

Suspended acoustical tile ceilings are in place in one classroom and the school offices. At least one classroom on the 2nd floor has applied acoustical tile/"Celotex" ceilings so it is unclear if the plaster is a former replacement or change in the original design.

The corridor configuration including twin stairways remains intact with original terrazzo flooring and marble stairs. An elevator/lift was installed at the north stair but it was done in a non-intrusive manner with a glass enclosure. The existing metal lockers were likely added c.1969 when the school became a junior high. The lockers are an obvious addition, not built into the wall pocket. The original doors include three-light wood doors generally with operable transoms, are extant in most locations.

The gymnasium/auditorium retains a high degree of integrity with the original stage and balconies intact. Original plaster wall finishes and Celotex ceiling with wood beams are in place.

HVAC systems have formerly been upgraded and window air-conditioners have been installed at numerous windows around the building. Historic light fixtures have been removed throughout; existing lighting is generally ceiling-mounted florescent fixtures. Bathrooms and basement locker rooms appear to retain historic fixtures and finishes including the original metal partitions and terrazzo floors.

The existing site reflects the lots assembled by the school board in 1926 for construction of Grant School, the first school located on the west side of town. Playground equipment was likely removed when the original grade school became a junior high. The west portion of the site was used as an athletic field. A metal building was constructed immediately northwest of the school in 1976 for auxiliary classroom space. The metal building remains in place and is a non-contributing resource (to be removed from the site).

The primary exterior alterations are replacement of doors and windows with contemporary aluminum-framed units and infill of former narrow arched openings in the tower, gable-ends, and ventilation shafts with wood panels (original fixed-sash windows or wood louvers). The red clay tile roof was formerly replaced with composition shingles resulting in a significant change in exterior appearance. One-story pent enclosures were built to enclose basement stairways on each side of the gymnasium. There are some condition issues with foundation spalling and efflorescence on brick above the foundation but generally the exterior masonry is unaltered and in good condition.

With the exception of the replacement doors and windows (and minor modification of select openings) and replacement of the original clay tile roof with composition shingles, the exterior of the building closely resembles its original appearance. However, the loss of the clay tile roof and wood windows and doors represents the loss of key components of the original Late Gothic Revival design. Even with these losses, the exterior of the school retains a fair to mid-level of historic integrity still portraying prominent characteristics of the original design.

Grant School
Name of Property

Sherman County, Kansas
County and State

8. Statement of Significance

Applicable National Register Criteria

(Mark "x" in one or more boxes for the criteria qualifying the property for National Register listing.)

- A Property is associated with events that have made a significant contribution to the broad patterns of our history.
- B Property is associated with the lives of persons significant in our past.
- C Property embodies the distinctive characteristics of a type, period, or method of construction or represents the work of a master, or possesses high artistic values, or represents a significant and distinguishable entity whose components lack individual distinction.
- D Property has yielded, or is likely to yield, information important in prehistory or history.

Criteria Considerations

(Mark "x" in all the boxes that apply.)
Property is:

- A Owned by a religious institution or used for religious purposes.
- B removed from its original location.
- C a birthplace or grave.
- D a cemetery.
- E a reconstructed building, object, or structure.
- F a commemorative property.
- G less than 50 years old or achieving significance within the past 50 years.

Areas of Significance

Education

Architecture

Period of Significance

1926-1965

Significant Dates

1926

Significant Person

(Complete only if Criterion B is marked above.)

Cultural Affiliation

Architect/Builder

Mann & Co. (Hutchinson, KS), Architect

Sharp Brothers (KC, MO), Contractor

Period of Significance (justification)

The period of significance for Grant School is 1926 to 1965. This period begins with the school's date of construction and ends with the fifty-year cutoff for periods of significance where historic functions and characteristics continue to have importance and no specific date exists for ending the building's historic or architectural significance. The school continuously functioned as a public school until May 2015.

Criteria Considerations (justification)

NA

Grant School
Name of Property

Sherman County, Kansas
County and State

Narrative Statement of Significance

(Provide a summary paragraph that includes level of significance, applicable criteria, justification for the period of significance, and any applicable criteria considerations.)

Summary

Constructed in 1926, Grant School in Goodland is nominated to the National Register of Historic Places under the multiple property documentation submission, *Historic Public Schools of Kansas*, as a representative of the *City Graded School* property type. The school is significant under National Register Criteria A and C in the areas of Education and Architecture.

Locally significant under Criterion A, Grant School was built in 1926 to relieve overcrowded conditions at the existing Central and Lincoln Graded Schools. The construction and opening of Grant School in 1926 coincided with the addition of Kindergarten to the district's curriculum; Grant being the first of Goodland's School to have a purpose-built Kindergarten classroom. Grant School served the Goodland community as an elementary school from 1926 to 1969⁴ and then as a Junior High School for another forty-six years.⁵

The school is significant architecturally (Criterion C) as a representative of a Late Gothic Revival public school building designed by prolific Hutchinson architects, Mann and Company. Although best-known for their Modern school designs, the firm's predecessor Mann and Gerow began designing public schools as early as 1915. The school embodies traditional details of the Collegiate Gothic style with its variegated red brick exterior and stone detailing, multiple gable roofs and dormers, stone quoining, and central tower. The design reflects Progressive Era tenets of school design with hard, sanitary finishes, a combined auditorium and gymnasium space, and specialized classroom for the newly added kindergarten curriculum – all typical of grade schools of this period.

Elaboration

Public Education in Goodland, Kansas⁶

An examination of school construction in Goodland reflects a history of the community's dedication to public education. New public school facilities were constructed nearly every decade from the time the first school was built in 1890 until the 1960s when two new elementary schools were built.

The first school in Sherman County opened in 1885 in the small town of Gandy. The first school building in the city of Goodland was moved in from the town of Eustis for a three-month term in 1888. Enrollment increased from 79 students in 1888 to 284 students in 1889 creating an immediate need for expanded accommodations. After rejecting the option of the expanding the frame building (Eustis School) that had been placed on the site, a bond was passed in 1889 to build a new \$10,000 building on the same site - on Sherman between 8th and 9th Street. This building, which became known as Lincoln School, was the first public school built in Goodland.

A new school was built at 12th and Main in 1908 and called Central School. This two story school accommodated the grades on the lower level and high school on the upper floor. There was no gymnasium in either of these early schools however; a raised platform in one of the classrooms was used for programs.

⁴ Grant School served K-8th grades when it was first constructed. Following an expansion at the high school in 1953, the 7th & 8th grades were moved to the high school and Grant School served K-6th through 1969.

⁵ The school will close at the end of the 2015 school year; the junior high students will be moving to the high school for the 2016 school year.

⁶ William C. Pittman, *Over a Century of Education in Sherman County, Kansas*, (Goodland: Sherman County Historical Society, 2009).

Grant School
Name of Property

Sherman County, Kansas
County and State

A new school, the first dedicated High School, was constructed in 1916-17 on Cherry Avenue, between 12th and 13th Streets. Following construction of the new high school, Lincoln and Central Schools were used for the lower grades. However, crowded conditions at those schools led to construction of Grant School in 1926.

The proposed bonds for construction of a new grade school passed by a narrow margin in 1926 made possible by a majority vote in Ward 2 west of downtown. A site between 11th and 12th Streets at Montana was selected for the new school. Grant School opened in September 1927 serving the newly created Kindergarten through 8th Grade. Although early plans were to close the old Lincoln School upon Grant's opening, it was later decided to locate the new Vocational Agriculture curriculum at that school. This function was short lived and the old Lincoln School was demolished in 1932.

The absence of a gymnasium at the 1916 High School became an increasing problem. The high school actually "rented" time in the gymnasium at Grant School. The school board and community residents took advantage of federal public works programs during the Great Depression, to finance a new high school. It was decided to build the new school on the same site as the old (1916) High School. Arrangements were made for temporary school quarters and the old school was demolished to make space for construction of the new building. The PWA high school opened in 1938. It was expanded in the early 1950s and continues to serve as the city's high school today. Seventh and Eighth Grades (Junior High) were moved to the high school following the 1953 expansion. A separate football stadium was built in 1946 and a field house added in 1965.

The old Central School, in use as a grade school since construction of the high school in 1916, was replaced by a new building on the same site in 1950. The school district's major construction program culminated with construction of two new elementary schools in 1967. North and West Elementary Schools, in addition to Central (Grade) School, served the city's elementary grades. With construction of the new elementary schools, Grant School was no longer needed for the elementary grades. Junior High students moved from the high school to Grant in 1969 and the school became known as Grant Junior High. It served that function for more than forty years. At the end of the 2015 school year, the seventh and eighth grades will return to the high school and Grant School will be sold to a private developer for conversion to apartments.

Grant School

Like most public schools across the nation, Goodland's Grant School was built to relieve crowded conditions at other the city's other schools. Even with construction the city's first high school the previous decade, the old Central and Lincoln Schools were too small to serve the lower grade. Even given the crowded conditions and deteriorating facilities at Lincoln School (built in 1890), the bond issue for construction of a new grade school narrowly passed in May 1926. Two of the three wards narrowly opposed construction of a new school but Ward 2 approved the bond by a majority sufficient to pass the measure city-wide. The Ward 2 neighborhood was rewarded for their support when the school district selected a site west of downtown in Ward 2. The site for the school had not been selected prior to passage of the bond and the board went to work immediately to acquire properties. In less than a month, the local newspaper announced that the school site would include all of Lot 24 and the west 175' of Lot 23 in the First Addition.⁷ By late July, the local paper announced that the board had acquired all but a few lots and that condemnation proceedings would begin on the remaining lots. At least one home – The E.J. Strait property (Lots 29, 30 & 31, Block 24) - was acquired by eminent domain and auctioned (to be moved from the site).⁸ The existing school site is bordered by private homes along the north side of the rear lot (formerly Block 24) suggesting that the board was not able to acquire all of the lots it had original planned. This difficulty could account for the unique siting of the school building with the front entrance facing east/midblock toward the backside of private residences on Kansas Avenue.

⁷ "Select Site New Grade School," *Goodland News-Republic*, 3 June 1926.

⁸ "General Contract is Let for School," *Goodland News-Republic*, 29 July 1926 and "Board to Sell House," *Goodland News-Republic*, 5 August 1926.

Grant School

Name of Property

Sherman County, Kansas

County and State

Mann and Company, an architectural firm from Hutchinson, Kansas had been contracted prior to the bond election to prepare preliminary plans and a cost estimate for the new school. Less than two months following passage of the bond issue, architectural plans were completed and bids were solicited for construction of the new school.⁹ There were 23 bidders and the general contract was awarded to Sharp Bros. of Kansas City, Missouri in the amount of \$101,500.¹⁰ A local firm, Holm Plumbing and Heating Co. was awarded the plumbing and heating contract and E.T. Petit of Colby was awarded the electrical contract.¹¹

Fred W. Lipps, a graduate of the school of engineering at the Kansas State Agricultural College, Manhattan, was Sharp Brothers – the general contractor's - general superintendent of construction.¹² C.O. Swofford was the on-site representative of the architect (Mann & Co.).¹³

In June 1927, the local newspaper announced that the school was nearing completion touting, "Modern Fireproof Structure Ranks with Best in State."

The new building, which will be called Grant School, was erected at a cost of \$150,000 including equipment...It is entirely of fireproof construction, built as it is of brick and steel. The building is one of the best in the state and is something of which residents of Goodland may well be proud.

The roof of red tile adds to its attractive appearance. There are nine entrances, the main one facing the east. A large tower at the main entrance helps to beautify the structure.

One of the most attractive rooms is the kindergarten department in the southwest corner of the building. This is well lighted and an ideal room for small children. There are nine classrooms on the second floor and ten on the first floor, all of which are well lighted and ventilated. A feature of each room is the cloak room with movable openings which allow easy access to the coats and hats. These places can be closed so that they appear as a part of the wall.

Each room is equipped with an automatic time clock. These clocks are being installed this week by Guy Sheffield of Wichita, representative of the International Time Recording Company of New York City. The master clock, which is located in the office, automatically controls the signals of each of the class rooms, corridors, and playground. Mr. Sheffield said this was the latest thing in the way of time clocks. The one being installed here was made especially for the Grant building. Other schools in this part of the state have clocks similar to this one. Batteries controlling the clocks are located in the basement.

The yard of the new building will be made as attractive as possible as soon as the building material is taken away. Trees were planted around the entire yard this spring.¹⁴

Folding seats of dark wood, to match woodwork in the building, were purchased for the auditorium as were opera chairs for the back balcony. Chairs for the music room, fitted with tablet arms, were also purchased, all from the American Seating Company of Chicago. Desks and seats for one room and the teachers' desks and chairs were bought through the W.A. Higdon Drug Company of Goodland. Kindergarten furniture (for rooms in Grant and Central School) were ordered from the W.H. Bower & Sons Furniture Company.¹⁵

⁹ "Notice to Contractors School Building, Goodland, Kansas," *Goodland News-Republic*, 15 July 1926.

¹⁰ It is interesting to note that Sharp Bros. from Kansas City were the contractors on several schools designed by Mann and Co. going back to 1915 (KSHS files).

¹¹ "General Contract is Let for School," *Goodland News-Republic*, 29 July 1926.

¹² "New School Ranks Among Best," *Goodland News-Republic*, 26 August 1926.

¹³ "Construction Work Delayed," *Good News-Republic*, 14 October, 1926.

¹⁴ "New School Building is Near completion," *Goodland News-Republic*, 2 June 1927.

¹⁵ "Plans New School Department," *Goodland News-Republic*, 16 June, 1927.

Grant School

Name of Property

Sherman County, Kansas

County and State

Goodland children in kindergarten through sixth grades would attend the new Grant School, or Central School based on where they lived. All children living north of Twelfth Street and west of Center and all who lived south of Twelfth and west of Sherman attended the new school. All other grade school children attended Central School (Lincoln School, the other former grade school, was converted to Vocational Agriculture classrooms). All of the city's junior high school students (7th and 8th grades) attended the new Grant School.¹⁶

Grant School opened with the 1927 school year on September 5th. Over 1,000 Goodland residents took advantage of an open house September 9th, 1927 to see the new school.¹⁷

The June 1927 newspaper article referenced above was the first known public announcement of the name of the new school. While most presume Grant School was named in honor of Ulysses S. Grant, Goodland's Grant School was named in honor of local resident Beulah Grant who was the City Librarian and Chairman of the School Board when Grant School was built.

Lottie Beulah Grant was born in Atlantic, Iowa in 1885 to Alfred and Harriet Roth. The family moved to Ruleton in 1888. Beulah attended Logan and Ruleton schools and then attended Normal School in Goodland. She taught at Ruleton one year before marrying Jasper Craton Grant, an engineer for the Rock Island Railroad. Jasper died in 1907 before Clarence, their second child, was born. Beulah moved to Goodland with her two children and in 1910, took a job as a telephone operator. She held that job for eleven years. In 1921, Beulah was hired as the city librarian, at the new Carnegie Library. She returned to school, attending college at Fort Collins, CO to earn a degree in library science. Grant held the position of City Librarian for over forty years, retiring in 1964. She was active in local church and community affairs. Grant served on the Board of Goodland Schools, re-elected as chairman of the School Board in 1927. Beulah Grand died in 1978 at the age of 93 but left a lasting legacy in Grant School.¹⁸

A Mann and Co.-designed Public School¹⁹

Grant School was designed by the Hutchinson firm of Mann & Co, one of the most prominent architectural firms in western Kansas and best known for their designs of public schools and civic institutions.

Mann and Co. Architects and Engineers was established in 1924 and has continually been in business since that time. Arthur R. Mann was born in Sheffield, England in 1877 and moved to Reno County with his parents at the age of two. He received an engineering degree from the University of Kansas in 1906 and in 1908, he partnered with C.A. Kelso and T. M. Gerow forming Kelso, Mann and Gerow, Architects and Engineers in Hutchinson. In 1913 the name Kelso was dropped;²⁰ the firm became Mann and Gerow operating until 1923.²¹ The firm of Mann & Co. was formed in 1924 following Gerow's departure. Arthur's son, Robert E., graduated from University of Kansas School of Architecture in 1932 and joined his father's firm as a draftsman; he was made a partner in 1937. Prior to Robert joining the firm, the design work was done by staff architects supervised by Arthur Mann.

Although Mann & Co. is perhaps best-known for their modern designs of Kansas schools and courthouses, the firm's focus on public schools pre-dates the formation of Mann & Co. in 1924. According to available firm records, Mann and Gerow designed their first school in 1915,²² and the firm has designed dozens of schools

¹⁶ "New Board Members Installed," *Goodland News-Republic*, 4 August 1927.

¹⁷ "School Enrollment Shows Steady Increase; New Grant Building Open to Visitors Friday Night," *Goodland News-Republic*, 8 September 1927.

¹⁸ Beulah Grant obituary, *Goodland News-Republic*, 17 December 1978 and High Plains Museum files on Beulah Grant.

¹⁹ Information on Mann and Co. is summarized from the *Historic Public Schools of Kansas* MPS (Spencer, 2008, E-26 and Appendix C-56) and "Mann & Mann - Hutchinson" Architect File, State Historic Preservation Office, Kansas Historical Society.

²⁰ Kelso moved to Los Angeles.

²¹ Gerow moved to Eugene, Oregon in 1923.

²² Available records from Mann & Co. begin in 1915. It is possible that Kelso, Mann and Gerow's portfolio, from 1908 – 1913, also included public school buildings.

Grant School
Name of Property

Sherman County, Kansas
County and State

each decade since. School commissions ranged from small rural district schools to city and county high schools including Atwood, Colby, Haviland, Jetmore, Mullinville, Lyons, Russell, Scott City, and St. John.

Like many architects, Mann & Co. developed close relationships with the cities where they worked and often designed numerous commissions in the same community or county, spanning several decades. This was particularly true in western Kansas cities of Atwood, Colby, Oberlin, Liberal and Dodge City, in addition to their hometown of Hutchinson. These close associations with communities often resulted in design commissions beyond the school district. Public commissions included municipal buildings in Dodge City and Oakley, and the Ellis, Ellsworth, Graham, Lane, Republic, Scott, Stafford, and Stevens County Courthouses in addition to hundreds of business buildings, churches, hospitals, and private homes.

In 1948, Arthur Mann was recognized as one of the oldest practicing architects in the state; at that time, he, with his son Robert, had designed over 200 schools.²³ In 1956, Arthur Mann, was one of two Kansans recognized as Fellows of the American Institute of Architects.²⁴ A complete listing of Mann's public school projects, including new construction, additions, and remodeling, spans a period of nearly ninety years and totals nearly five hundred buildings.

Stylistically, the firm's designs followed national trends. Their earliest-known school designs were primarily Commercial Style, Progressive Era buildings that were generally rectangular in form with applied classical detailing. Late Gothic Revival, more commonly called Collegiate Gothic is the secular version of Gothic architecture that became prevalent around the turn of the 20th century in the United States and England, particularly on college campuses. Although named for its emergence on college campuses, Collegiate Gothic was the dominant style of public school buildings across the nation by the end of the First World War. Mann & Co.'s first experimentation with the Collegiate Gothic style came in the mid-1920s. Around the time they were designing Grant School in Goodland, the firm also designed grade schools in Oberlin and Sterling, also in the Collegiate Gothic style. The firm's first modern designs emerged in their work through the New Deal-era works programs WPA and PWA in the 1930s and 1940s that evolved into the modern school plants of the 1960s. At least four known buildings designed by Mann & Co. are listed on the National Register of Historic Places including the Dodge City Municipal Building (1929), Colby High School (1934), Republic County Courthouse (1938), and Shallow Water School (1938).

Grant School in Goodland is a modest example of the Collegiate Gothic style, lacking prominent characteristics of the style such as pointed arches and crenulations. However, like most Collegiate Gothic buildings, Grant School is a red brick building with elaborate stone detailing and a central entry tower. The building embodies other prominent features that are characteristic of the style including gabled roofs, a symmetrical facade with central entrance, stone quoining, and checkerboard detailing.

Historic Public Schools of Kansas²⁵

Built to serve kindergarten through 8th grade in Goodland's west neighborhood, Grant School is categorized as a *City Graded School*, as defined in the *Historic Public Schools of Kansas* Multiple Property Submission (MPS).

As defined in the Historic Kansas Schools MPS, *City Schools* are generally schools those schools located in cities of the first and second class (over 2,000 population); however, population is not the sole criterion for the property type. The distinguishing factor for this property type is the type of school. By the early twentieth century, "City Schools" almost always included a separate high school (or multiple high schools) to serve the residents of the city. The graded school is a distinguishing factor between the city schools and town schools.

²³ *Arts and Crafts of Kansas: An Exhibition Held in Lawrence, February 18-22 1948*, catalog, 81-83.

²⁴ Melissa Fisher Isaacs, *Colby Community High School* National Register Nomination, 2003, 8-3.

²⁵ Brenda Spencer and Christy Davis, *Historic Public Schools of Kansas* Multiple Property Nomination to the National Register, September, 2004, F-31-32.

Grant School
Name of Property

Sherman County, Kansas
County and State

This property sub-type includes the early city graded schools, the city grade schools and modern elementary schools. The first city schools were called graded schools because, unlike the country school, they incorporated separate grades from the earliest days. The schools typically included courses for grades one through eight and the first high school instruction included one to four years of high school courses within the graded school. The sheer number of students had as much to do with the emergence of separate high school buildings as educational doctrine. Even in smaller cities, it was common to have east and west or north and south graded schools to serve residents of specific areas of the city to allow students to walk or ride their bicycles to school. As high schools became the norm, the early city graded schools became grade schools serving grades 1-8.

One of the most significant factors in the evolution of city schools was the standardization movement that emerged from the Progressive Era. The Progressive Era is recognized for the advancements in standardization of text books and teacher qualifications. The development of specialized curriculum had a significant impact on the design of school buildings. A distinction between city and town grade schools was not only the number of schools in a single community, but the degree of specialized spaces within the graded (or grade) school. City grade schools were typically one- or two-story masonry structures. They tended to have more customized spaces than town schools, often with at least a gymnasium and sometimes both a gymnasium and auditorium, and specialized classrooms for at least art and music. Expansions in curriculum led to the emergence of the junior high school and the kindergarten. By the 1920s, junior high schools were a common component of city school systems therefore, grade schools generally became K-6 (with the addition of kindergarten). The introduction of kindergarten was manifested in the design of city grade schools with the addition of distinguished features. The kindergarten room was often a unique shape – a curved end room or projecting bay, and included special features like fireplaces, built-in lockers or cubicles, and private drinking fountains, sinks and/or restrooms.

Grant School, located in Goodland's Ward 2 neighborhood west of downtown, was built to relieve overcrowded condition at the city's two existing graded schools. While the school does not exhibit all of the characteristics of the property type, this was likely due to the relatively small size of the city of Goodland and its rural location. Built near the end of the Progressive Era, the school's design did incorporate primary features of the modern school plan including a gymnasium (although it served a dual function as an auditorium). Although not to the extent typically seen in high schools or junior high schools, and even grade school in larger cities, the design of Grant School incorporated at least one space designed for a specific use - the kindergarten room. No other classrooms, such as art or music, received specialized design or built-in features that distinguished them from other classrooms.

Integrity

Grant School is nominated to the National Register of Historic Places under the multiple property documentation form, *Historic Public Schools of Kansas*, as a representative of the *City Graded School* property type. The school is significant on a local level under Criteria A and C in the areas of Education and Architecture. Constructed in 1926, the building served residents of Goodland for nearly ninety years. Grant School is also significant as a Late Gothic Revival School, the most popular style of public school buildings in the years following World War I and as a representative of the early work of Hutchinson architects, Mann & Co., who became prolific designers of public schools in western Kansas.

The property retains integrity of location, setting, design, materials, workmanship, and association. The building has experienced some significant exterior alterations – namely the replacement of doors and windows and replacement of the red clay tile roof.

The primary interior modifications were the relocation of the school office from the second floor to the first floor and the later expansion of the office into the front entry foyer, a reversible change. The original second-floor office was converted to the school library, expanded into an adjacent classroom. The interior of the building

Grant School

Name of Property

Sherman County, Kansas

County and State

has undergone minor remodeling including fixture and finish upgrades and the addition of a small elevator. Other interior changes included new flooring in classrooms and installation of florescent lighting in classrooms and corridors.

Extant original features include the basic plan configuration with central corridor, multiple entrances, twin stairways, primary spaces such as the auditorium/gymnasium in near-original condition, built-in features including chalk boards and closets in most classrooms, and interior doors and wood trim throughout. Original finishes include plaster walls, "Celotex" ceiling in the auditorium/gymnasium, terrazzo flooring in corridors and marble stairways.

According to *The Historic Public Schools of Kansas MPS*, alterations such as replacement windows and doors, and replacement roofing materials are common among those schools that remain in their intended use, and will not automatically render a school ineligible for register listing.²⁶ The original masonry openings at doors and windows have generally been maintained and are clearly visible. The plan configuration and circulation patterns remain intact. The school retains distinctive characteristics of the Collegiate Gothic style including the entry tower, gabled dormers, buttresses, checkerboard patterns and quoining.

Grant School clearly communicates its historic function as a public grade school and embodies the characteristics of the "City Schools" property type as defined in the *Historic Public Schools of Kansas MPS*

²⁶ Brenda Spencer and Christy Davis, *Historic Public Schools of Kansas Multiple Property Nomination to the National Register*, 2004, F37-39.

Grant School
Name of Property

Sherman County, Kansas
County and State

9. Major Bibliographical References

Bibliography (Cite the books, articles, and other sources used in preparing this form.)

- Bahe, Loren. Oral interview with Beulah Grant 9 March 1975, transcribed by High Plains Museum September 2000.
- Davis, Christy, Sarah Martin and Matthew Holtkamp. *Dodge City Municipal Building* National Register Nomination, 2012.
Goodland News Republic.
- Grant Junior High School Kansas Historic Resource Inventory. n.a, n.d.
- High Plains Museum. Grant School files and photographs, Parker Collection Photographs, and transcription of interview with Beulah Grant.
- Holbrook, Lloyd (local historian and former Grant School Librarian). Personal research and files on Grant School and personal interview with author 12 January 2015.
- Isaacs, Melissa Fisher. *Colby Community High School* Nomination to the National Register, 2003.
- Kansas Historic Resource Survey. Multiple listings for public schools designed by architects Mann & Co. "Mann & Mann - Hutchinson" Architect File, State Historic Preservation Office, Kansas Historical Society.
- Mann and Company. *Grade School Building, Goodland, Kansas* Original Architectural Drawings, June 1926. [Blueprints obtained from USD 353 School Board].
- Pittman, William C. *Over A Century of Education in Sherman County*. Goodland: Sherman County Historical Society, 2009
- Spencer, Brenda . *Historic Public Schools of Kansas* Multiple Property Nomination to the National Register, 2004.
- Schwenk, Sally F. and Dana Cloud. *Republic County Courthouse* National Register Nomination, 2000.

Previous documentation on file (NPS):

- preliminary determination of individual listing (36 CFR 67 has been requested)
- previously listed in the National Register
- previously determined eligible by the National Register
- designated a National Historic Landmark
- recorded by Historic American Buildings Survey # _____
- recorded by Historic American Engineering Record # _____
- recorded by Historic American Landscape Survey # _____

Primary location of additional data:

- State Historic Preservation Office
- Other State agency
- Federal agency
- Local government
- University
- Other

Name of repository: Sherman County Historical Society and High Plains Museum (Goodland, KS)

Historic Resources Survey Number (if assigned): NA

10. Geographical Data

Acreage of Property Approximately 2 acres

Provide latitude/longitude coordinates OR UTM coordinates.

(Place additional coordinates on a continuation page.)

Latitude/Longitude Coordinates

Datum if other than WGS84: _____

(enter coordinates to 6 decimal places)

1 39.347390 -101.718220
Latitude: Longitude:

3 _____
Latitude: Longitude:

2 _____
Latitude: Longitude:

4 _____
Latitude: Longitude:

Grant School
Name of Property

Sherman County, Kansas
County and State

Verbal Boundary Description (describe the boundaries of the property)
Lots 7 – 18 and 25 – 35, Block 2 of the First Addition to the City of Goodland, Sherman County, Kansas

Boundary Justification (explain why the boundaries were selected)
The parcel described above reflects the site on which the school is located and includes the parking lot in front/east of the school. The site does not include the vacant lots west of the school formerly used as an athletic field. The school district retained ownership of the vacant land.

11. Form Prepared By

name/title Brenda R. Spencer
organization Spencer Preservation date 18 February 2015
street & number 10150 Onaga Road telephone 785-456-9857
city or town Wamego state KS zip code 66547
e-mail Brenda@spencerpreservation.com

Property Owner:

 (complete this item at the request of the SHPO or FPO)

name USD 352 Goodland, Bill Biermann, Superintendent**
street & number 1312 Main Street telephone 785-890-2397
city or town Goodland state KS zip 67735

***Note – Property is under purchase contract by Cohen Esrey Affordable Partners – See attached owner consent.
Please include the following on correspondence regarding NR listing:

Tim Quigley
Cohen Esrey
6800 W. 64th Street Overland Park, KS 66202
913-671-3304

Paperwork Reduction Act Statement: This information is being collected for applications to the National Register of Historic Places to nominate properties for listing or determine eligibility for listing, to list properties, and to amend existing listings. Response to this request is required to obtain a benefit in accordance with the National Historic Preservation Act, as amended (16 U.S.C.460 et seq.).

Estimated Burden Statement: Public reporting burden for this form is estimated to average 100 hours per response including time for reviewing instructions, gathering and maintaining data, and completing and reviewing the form. Direct comments regarding this burden estimate or any aspect of this form to the Office of Planning and Performance Management, U.S. Dept. of the Interior, 1849 C. Street, NW, Washington, DC.

Additional Documentation

Submit the following items with the completed form:

Photographs

Submit clear and descriptive photographs. The size of each digital image must be 1600x1200 pixels (minimum), at 300 ppi (pixels per inch) or larger. Key all photographs to a sketch map or aerial map. Each photograph must be numbered and that number must correspond to the photograph number on the photo log. For simplicity, the name of the photographer, photo date, etc. may be listed once on the photograph log and doesn't need to be labeled on every photograph.

Grant School
Name of Property

Sherman County, Kansas
County and State

Photograph Log

Name of Property: Grant School

City or Vicinity: Goodland

County: Sherman State: Kansas

Photographer: Brenda Spencer

Date
Photographed: 11-12 January, 2015

Description of Photograph(s) and number, include description of view indicating direction of camera:

Number	Direction	Description
1 of 18	SW	View of school site from northeast corner of site on 11 th Street
2 of 18	SW	Front/east facade
3 of 18	S	North facade
4 of 18	E	Rear/west facade
5 of 18	SE	Gymnasium/Auditorium wing in center of rear/west facade
6 of 18	N	South facade
7 of 18	NW	Front/east facade from southeast corner of site
8 of 18	W	Front entry tower in center of east facade
9 of 18	NW	Upper windows on south side of gymnasium/auditorium wing
10 of 18	E	Front entrance from interior
11 of 18	S	First floor corridor
12 of 18	NE	Looking down to 1 st floor from landing of south stairway Marble stairs with cast-iron stair rail and terrazzo floor in corridor
13 of 18	S	Detail of typical classroom doors, plaster walls and ceilings and terrazzo floor
14 of 18	W	Looking W toward stage from east end of gymnasium/auditorium
15 of 18	SE	Detail of 2 nd floor balcony around three-sides of gymnasium/auditorium
16 of 18	NW	Typical classroom – northwest corner of 2 nd floor
17 of 18	W	Typical classroom – northeast corner of 2 nd floor
18 of 18	SW	Detail of typical classroom door and chalkboards – northeast corner of 1 st floor

Photograph Key



PHOTO KEY— SITE

Exterior photos keyed to aerial view from Google.com, 2015

Grant School
Name of Property

Sherman County, Kansas
County and State

Photograph Key

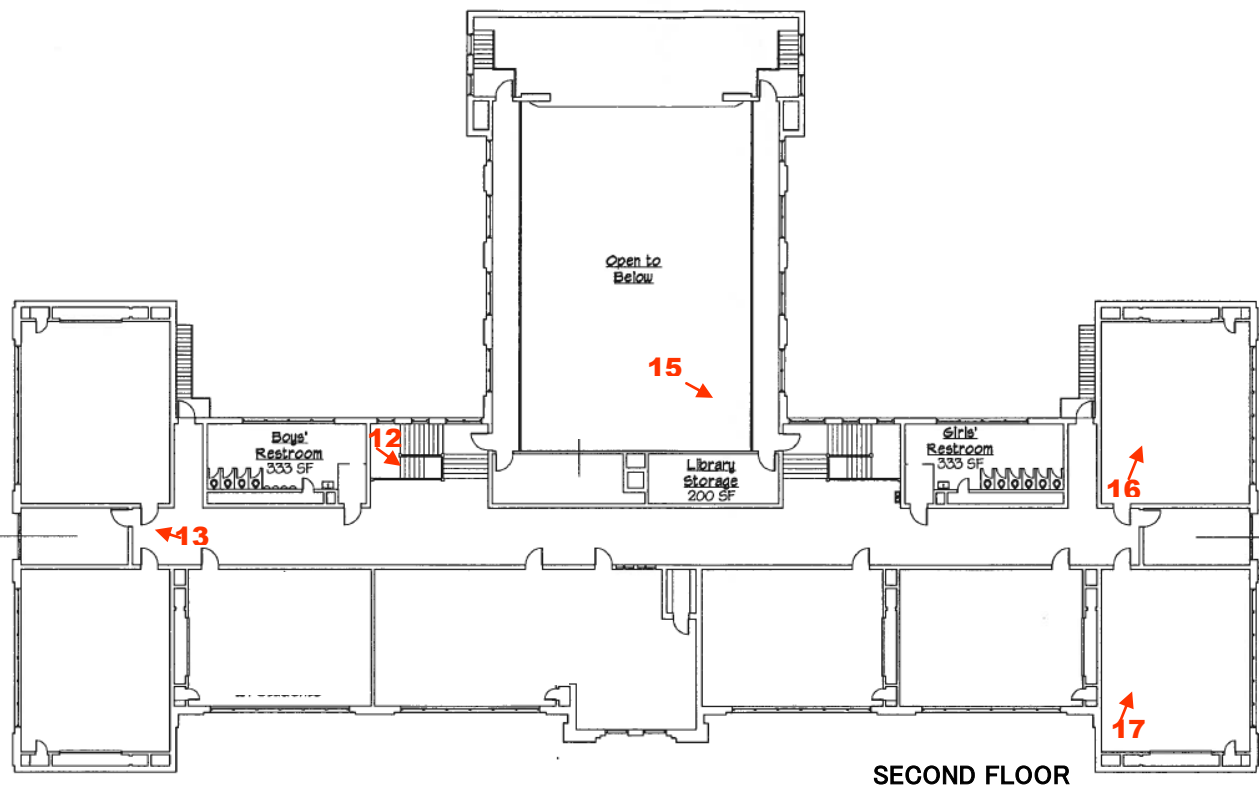
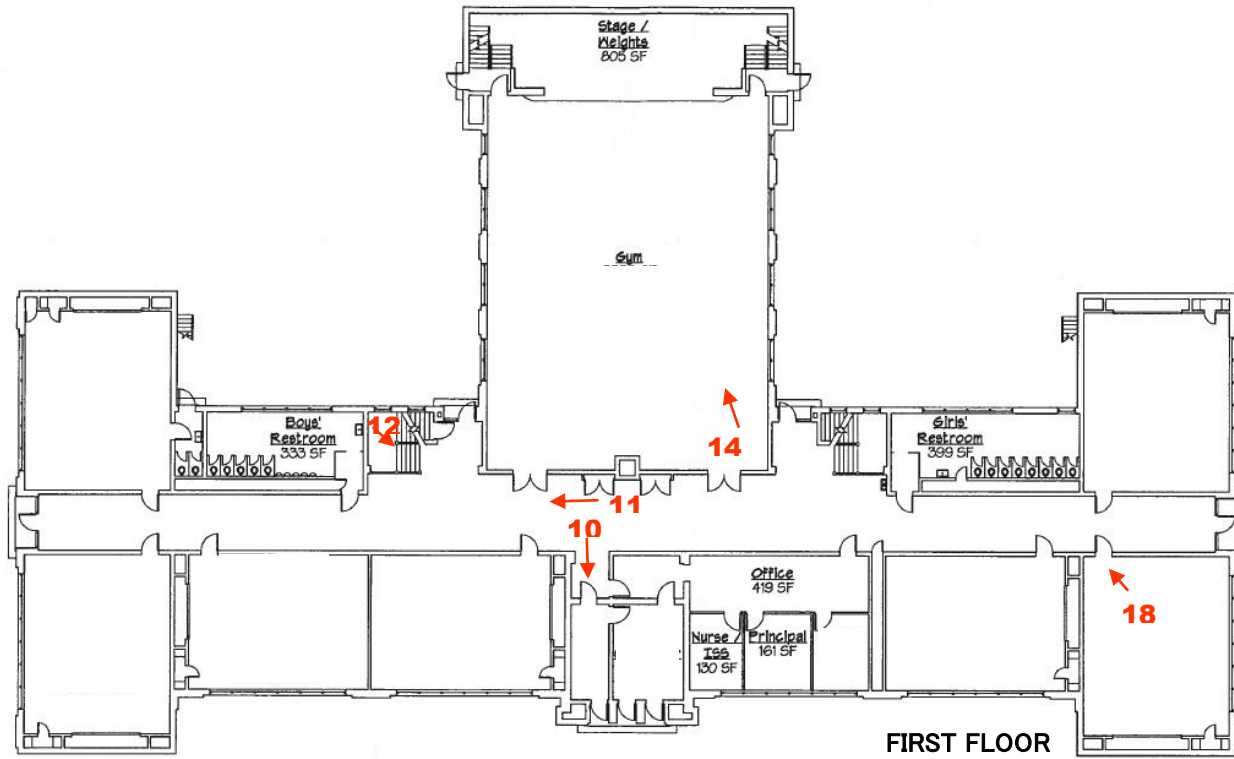


PHOTO KEY— INTERIOR

Interior photos keyed to USD 352 2008 Facilities Survey Plans

Grant School
Name of Property

Sherman County, Kansas
County and State

Additional Documentation

HISTORIC VIEWS

See select sheets of the architect's original drawings at end of the nomination.
The following photos were provided by the High Plains Museum in Goodland.



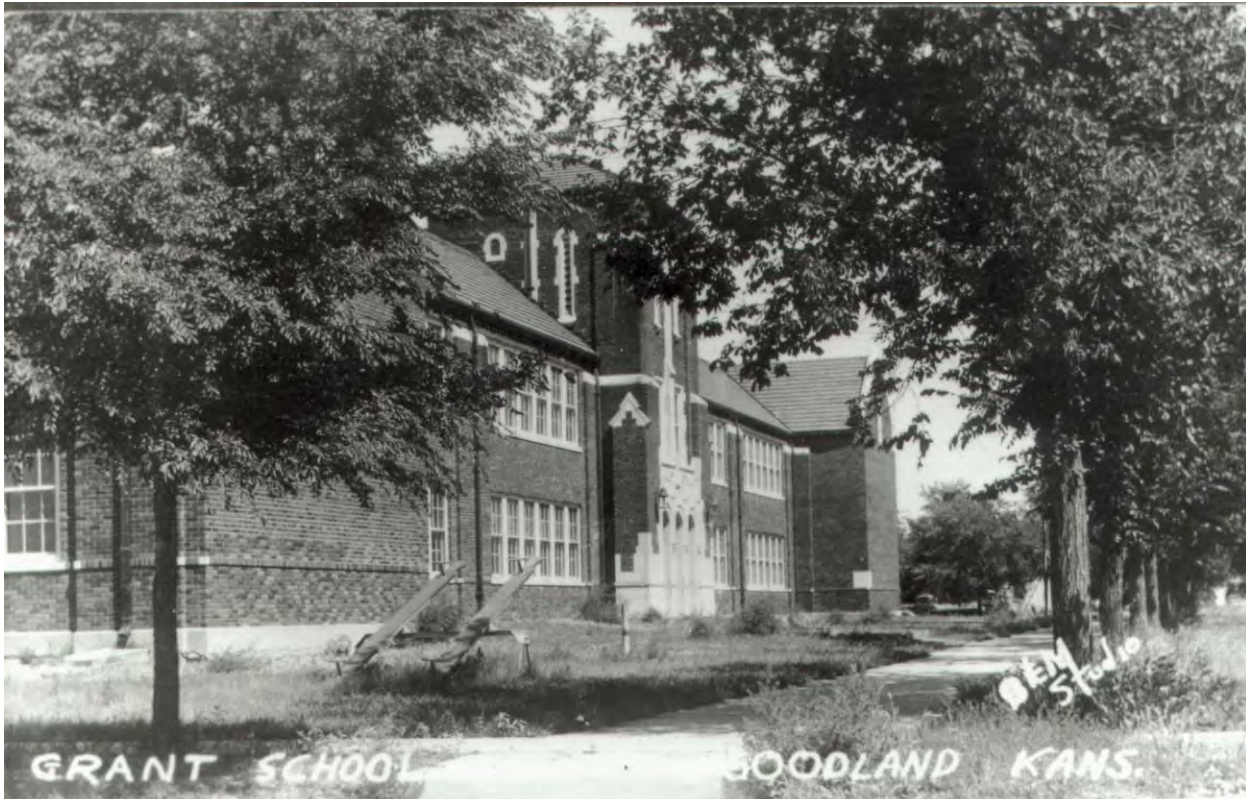
*Undated postcard view of Grant School from 12th Street. Note playground equipment in SE corner.
c.1927 shortly after construction*



Undated photo of Grant School from 11th Street northeast of school

Grant School
Name of Property

Sherman County, Kansas
County and State



Undated photo of Grant School from northeast by E.M. Studio (Parker Collection)



Group of students at front entrance of Grant School, 1942 (illustrating original entrance and windows)

Grant School
Name of Property

Sherman County, Kansas
County and State



7th and 8th Grade Football Teams at Grant School, 1957. View looking east at rear of school



2nd Grade Class at Grant School, 1954. View of typical classroom with original chalkboard.

Grant School
Name of Property

Sherman County, Kansas
County and State



Above - 1st, 2nd & 3rd Graders eating lunch at Grant School, 1956. Classroom at NW corner of 1st floor was used as lunchroom. Original wardrobe and closet visible on back wall.



Right - 1977 view of Grant Junior High band program in auditorium/gymnasium looking NW. View shows original windows and balcony; stage is in background on left

Grant School
Name of Property

Sherman County, Kansas
County and State



Upper Right - The school's namesake - Beulah Grant.

Grant was Goodland City Librarian 1921 – 1964 and President of Goodland School Board in 1927 during construction and opening of Grant School

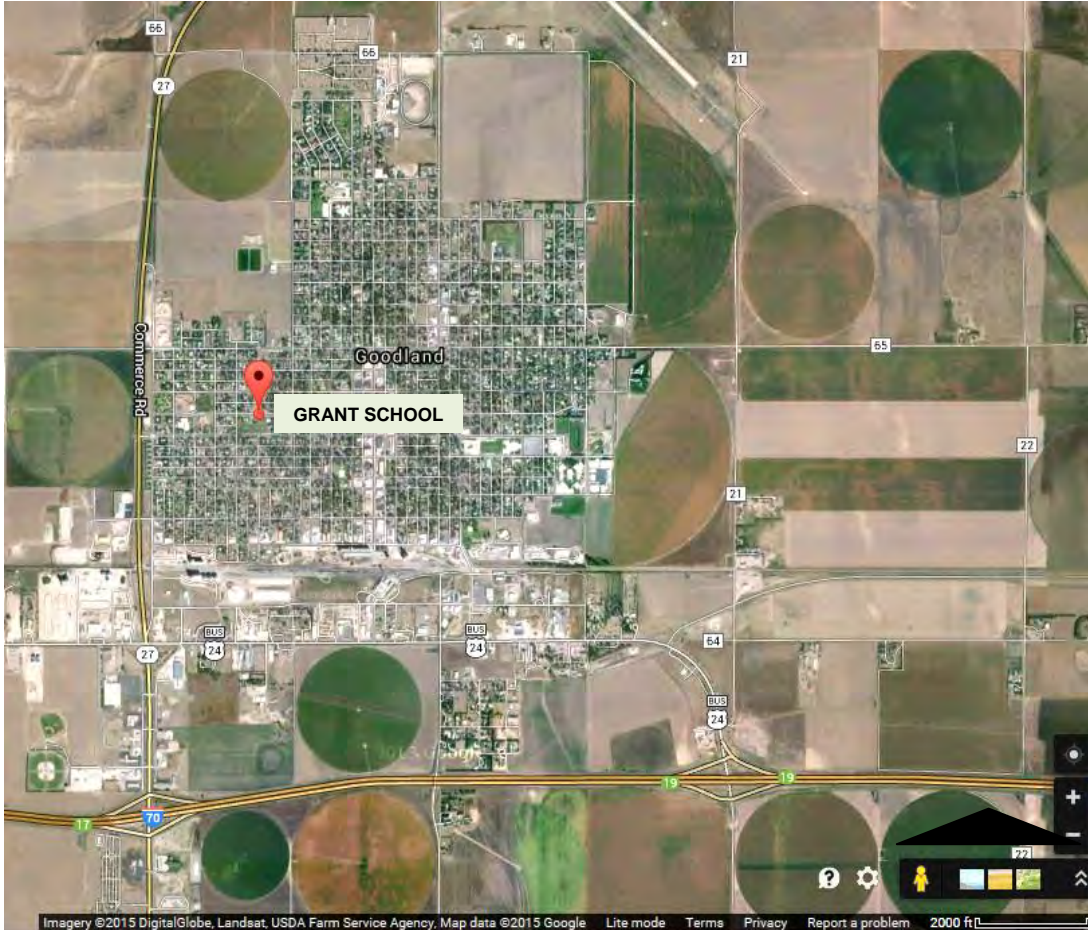
Left – Still stored in the safe at the school (located in the original 2nd floor-office which is now the library) are boxes of the original bonds sold to finance the school's construction in 1926-1927. As President of the School Board when the school was completed, many of the bonds are signed by Mrs. Grant.



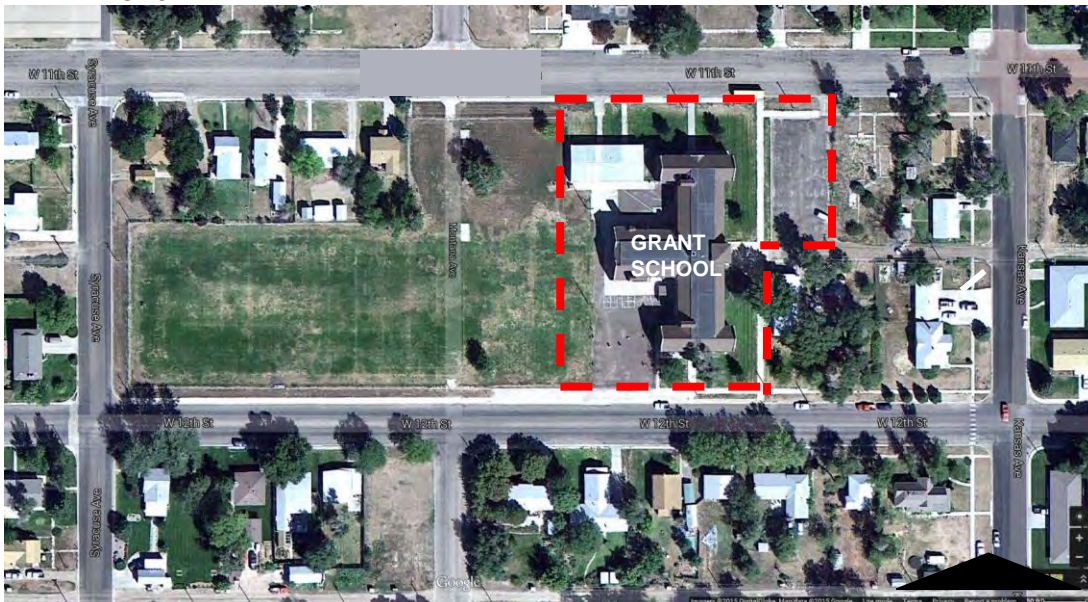
Grant School
Name of Property

Sherman County, Kansas
County and State

Additional Documentation
MAPS



Aerial View of Context (above) and site (below) from Google.com 2015
Grant School, 520 W. 12th Street, Goodland
Sherman County, Kansas
Latitude/Longitude: 39. 34739 -101.71822
Datum WGS84









GRANT JUNIOR HIGH
GUISSEBRANCS







GRANT JUNIOR HIGH
WRESTLING













MR. DOLL

MELANIE DAISE

ROOM 200

TAMIA CLAYTON

ROOM 201

Great Justice High
Information
Enrollment Code

888-842-4470



Talk About
Pain
IN THE
MIDDLE

Don't be
lame!
Be a
champion!









Whiteboard content:

Left side: **NT**
re
eat
ings
ppen

Middle section:

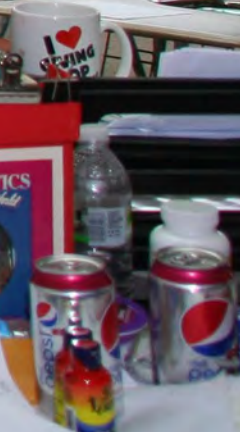
Area	Sasha Nguyen
Lesson	Tony Lee Lee
Stage	Sydney Stinson
Kellyn	Jake Andrews
David	John Wayne

Right side:

Name: _____
Date: _____
Topic: _____
List some ideas
Consider how to describe
Family
Values
Facts that prove
Mark



MATHEMATICS
Exploring Your World





COLORES!

¿Cómo te sientas?

¡Feliz!	¡Triste!	¡Enojado!	¡Esfuerzo!
¡Sorprendido!	¡Confundido!	¡Asustado!	¡Alegre!
¡Sole!	¡Avergonzado!	¡Enojado!	¡Alegre!
¡Yumido!	¡Cansado!	¡Cansado!	¡Alegre!



Goodland Schools Mission
 To engage, enrich, and empower all students in a safe environment, to meet high standards of achievement and become responsible, respectful, and productive members of society.

Motto/Slogan
 Engage, Enrich, Empower, Every Student, Every Day.

UNITED STATES DEPARTMENT OF THE INTERIOR
NATIONAL PARK SERVICE

NATIONAL REGISTER OF HISTORIC PLACES
EVALUATION/RETURN SHEET

REQUESTED ACTION: NOMINATION

PROPERTY Grant School
NAME:

MULTIPLE Public Schools of Kansas MPS
NAME:

STATE & COUNTY: KANSAS, Sherman

DATE RECEIVED: 5/22/15 DATE OF PENDING LIST: 6/12/15
DATE OF 16TH DAY: 9/27/15 DATE OF 45TH DAY: 7/07/15
DATE OF WEEKLY LIST:

REFERENCE NUMBER: 15000387

REASONS FOR REVIEW:

APPEAL: N DATA PROBLEM: N LANDSCAPE: N LESS THAN 50 YEARS: N
OTHER: N PDIL: N PERIOD: N PROGRAM UNAPPROVED: N
REQUEST: N SAMPLE: N SLR DRAFT: N NATIONAL: N

COMMENT WAIVER: N

ACCEPT RETURN REJECT 7.7.15 DATE

ABSTRACT/SUMMARY COMMENTS:

Entered in
The National Register
of
Historic Places

RECOM./CRITERIA _____

REVIEWER _____ DISCIPLINE _____

TELEPHONE _____ DATE _____

DOCUMENTATION see attached comments Y/N see attached SLR Y/N

If a nomination is returned to the nominating authority, the nomination is no longer under consideration by the NPS.

RECEIVED 2280

MAY 22 2015

Nat. Register of Historic Places
National Park Service

May 15, 2015

Paul Loether, National Register Chief
National Register of Historic Places
National Park Service
1201 Eye Street, N. W.
8th Floor (MS 2280)
Washington, DC 20005

Re: National Register documents

Dear Mr. Loether:

Please find enclosed the following National Register documents:

- **Mill Block Historic District – Topeka, Shawnee County, Kansas** (new nomination)
 - Enclosed: Signed copy of the document and 2 disks with a PDF of the nomination, mapping file, and photographs
 - The enclosed disk #1 contains the true and correct copy of the nomination.

- **South Kansas Avenue Commercial Historic District – Topeka, Shawnee County, Kansas** (new nomination)
 - Enclosed: Signed copy of the document and 2 disks with a PDF of the nomination, mapping file, and photographs
 - The enclosed disk #1 contains the true and correct copy of the nomination.

- **Church of the Assumption Historic District – Topeka, Shawnee County, Kansas** (new nomination)
 - Enclosed: Signed copy of the document and 2 disks with a PDF of the nomination, mapping file, and photographs
 - The enclosed disk #1 contains the true and correct copy of the nomination.

- **Westheight Apartments Historic District – Kansas City, Wyandotte County, Kansas** (new nomination)
 - Enclosed: Signed copy of the document and 3 disks with a PDF of the nomination, mapping file, and photographs
 - The enclosed disk #1 contains the true and correct copy of the nomination.

- **Baldwin City School & Gymnasium – Baldwin City, Douglas County, Kansas (new nomination)**
 - Enclosed: Signed copy of the document and 2 disks with a PDF of the nomination, mapping file, and photographs
 - The enclosed disk #1 contains the true and correct copy of the nomination.
- **Barnes, Oscar & Ida, House – Wichita, Sedgwick County, Kansas (new nomination)**
 - Enclosed: Signed copy of the document and 3 disks with a PDF of the nomination, mapping file, and photographs
 - The enclosed disk #1 contains the true and correct copy of the nomination.
- **Grant School – Goodland, Sherman County, Kansas (new nomination)**
 - Enclosed: Signed copy of the document and 2 disks with a PDF of the nomination, mapping file, and photographs
 - The enclosed disk #1 contains the true and correct copy of the nomination.
- **Smoky Hill Trail & Butterfield Overland Despatch Segment – Chapman, Dickinson County, Kansas (new nomination)**
 - Enclosed: Signed copy of the document and 2 disks with a PDF of the nomination, mapping file, and photographs
 - The enclosed disk #1 contains the true and correct copy of the nomination.
- **McClinton Market – Wichita, Sedgwick County, Kansas (delisting)**
 - Enclosed: Signed copy of the document and 1 disks with a PDF of the document
- **Hitschmann Cattle Underpass Bridge – Butler County, Kansas (delisting)**
 - Enclosed: Signed copy of the document and 1 disks with a PDF of the document
- **Hitschmann Double Arch Bridge – Butler County, Kansas (delisting)**
 - Enclosed: Signed copy of the document and 1 disks with a PDF of the document

Please note that my last day at KSHS is May 21, 2015. If you have any questions about these enclosed items, please contact Patrick Zollner at 785-272-8681 ext. 217 or pzollner@kshs.org.

Sincerely yours,



Sarah J. Martin
National Register Coordinator

Enclosures