



Stowe Village Historic District  
Stowe, VT

Credit: Suzanne Hand JUL 31 1978

Date: August 1977

Negative filed at Vermont Division for  
Historic Preservation

Description: Main & Maple Streets from  
Mountain Road

Photograph 1

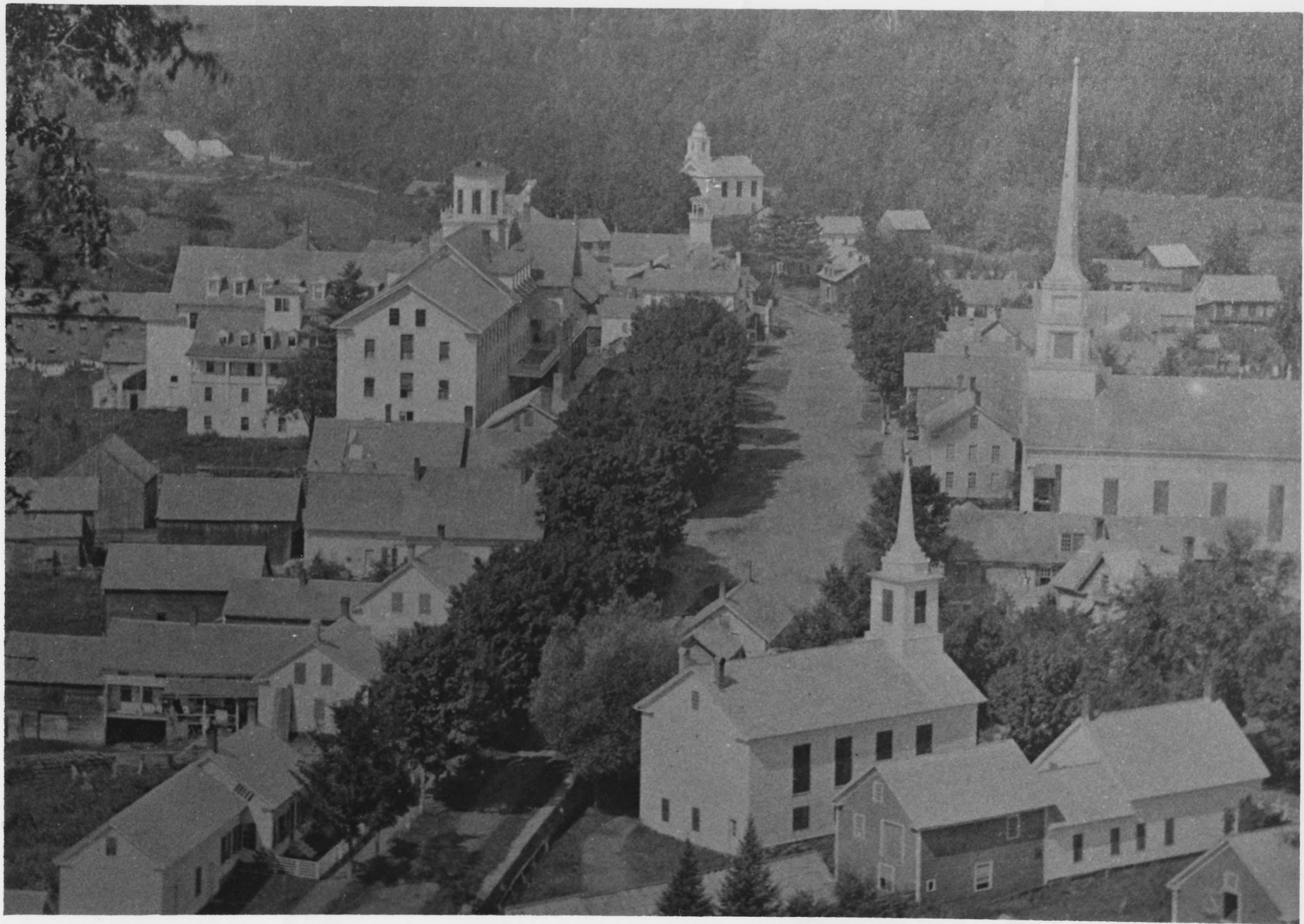
348

NOV 15 1978

photo 1

VERMONT DIVISION FOR HISTORIC PRESERVATION

CO. Lamoille TOWN Stowe DATE 8/77  
SUBJECT Main + Maple Streets from VIEW SE Mountain Road  
FILE # 77-A-348 CREDIT Suzanne Hand



Stowe Village Historic District  
Stowe, VT

Credit: Suzanne Hand

Date: August 1977

Negative filed at Vermont Division for  
Historic Preservation

Description: Stowe Village

Photograph 2                      JUL 31 1978

*photo 2*

NOV 15 1978

*W  
R  
S*

VERMONT DIVISION FOR HISTORIC PRESERVATION

CO. Lamoille TOWN Stowe DATE 10/77  
SUBJECT Stowe Village VIEW Repro  
FILE # 77-A-523 CREDIT Richard C. Cote



349

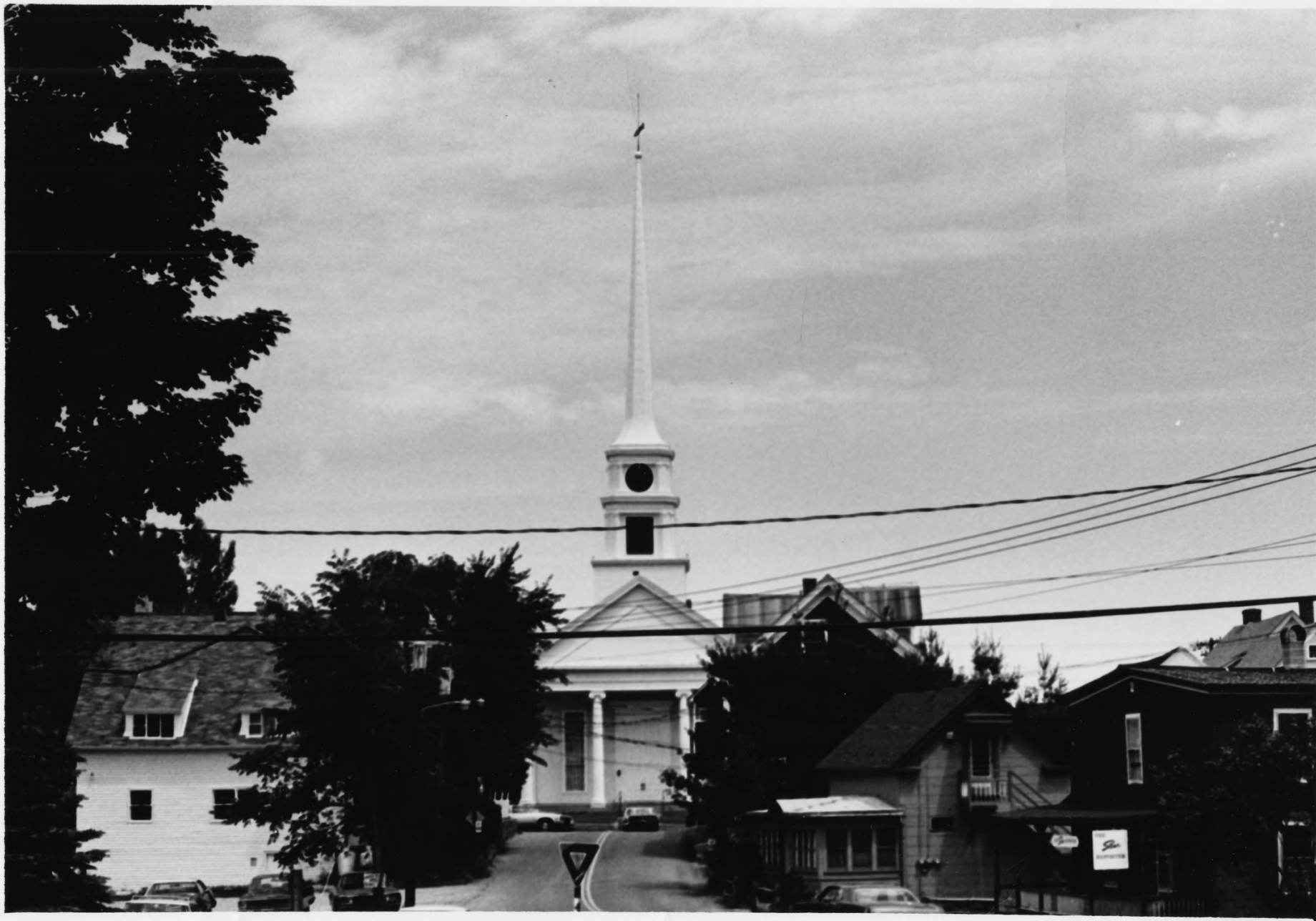
photo 3

NOV 15 1978

Stowe Village Historic District  
 Stowe, VT  
 JUL 31 1978  
 Credit: Suzanne Hand  
 Date: August 1977  
 Negative filed at Vermont Division for  
 Historic Preservation  
 Description: Village from Sunset Hill  
 Photograph 3

VERMONT DIVISION FOR HISTORIC PRESERVATION

CO. Ramoille TOWN Stowe DATE 8/77  
 SUBJECT Village from Sunset Hill VIEW W  
 FILE # 77-H-349 CREDIT Suzanne Hand



344

84

NOV 15 1978

Stowe Village Historic District  
Stowe, VT

Credit: Suzanne Hand JUL 31 1978

Date: August 1977

Negative filed at Vermont Division for  
Historic Preservation

Description: O.W. Butler House, Comm  
Church, LaBicoque, Stowe

Photograph 4 Reporter Bldg. (21, 61, 119,  
120)

VERMONT DIVISION FOR HISTORIC PRESERVATION

CO. Lamoille TOWN Stowe DATE 7/77  
SUBJECT O.W. Butler House Community VIEW N  
FILE # 77-A-344 CREDIT Suzanne Hand

*#61 #119 #120*  
*Church, La Bicoque, Stowe Reporter Bldg.*





Stowe Village Historic District  
Stowe, VT

Credit: Suzanne Hand

JUL 31 1978

Date: August 1977

Negative filed at Vermont Division for  
Historic Preservation

Description: The Annex, Tomilson House,  
The Anchorage (#95,94,93)

Photograph 5

NOV 15 1978

P.5

346

346

VERMONT DIVISION FOR HISTORIC PRESERVATION

CO. Lamoille TOWN Stowe DATE 7/77

SUBJECT The Annex, Tomilson House, VIEW The Anchorage

FILE # 77-A-346 CREDIT Suzanne Hand



JULY BLOOD DRAWING  
8  
helpsave a life

EXXON

BROOKSIDE  
MEXICO

Stowe Village Historic District  
Stowe, VT

Credit: Suzanne Hand **JUL 31 1978**  
Date: August 1977  
Negative filed at Vermont Division for  
Historic Preservation

Description: Old Town Hall, Green Mtn.  
Inn, Comm. Church (#11,13)  
Photograph 6

NOV 15 1978

PG

VERMONT DIVISION FOR HISTORIC PRESERVATION

CO. Lamoille TOWN Stowe DATE 7/77

SUBJECT Old Town Hall, Green Mountain Inn, Community Church VIEW E

FILE # 77-A-345 CREDIT Suzanne Hand



346

P7

NOV 15 1978

Stowe Village Historic District  
Stowe, VT

JUL 31 1978

Credit: Suzanne Hand

Date: August 1977

Negatives filed at Vermont Division for  
Historic Preservation

Description: Community Church Steeple,  
Green Mtn. Antiques House,  
Photograph 7 & Barn (#61, 23)

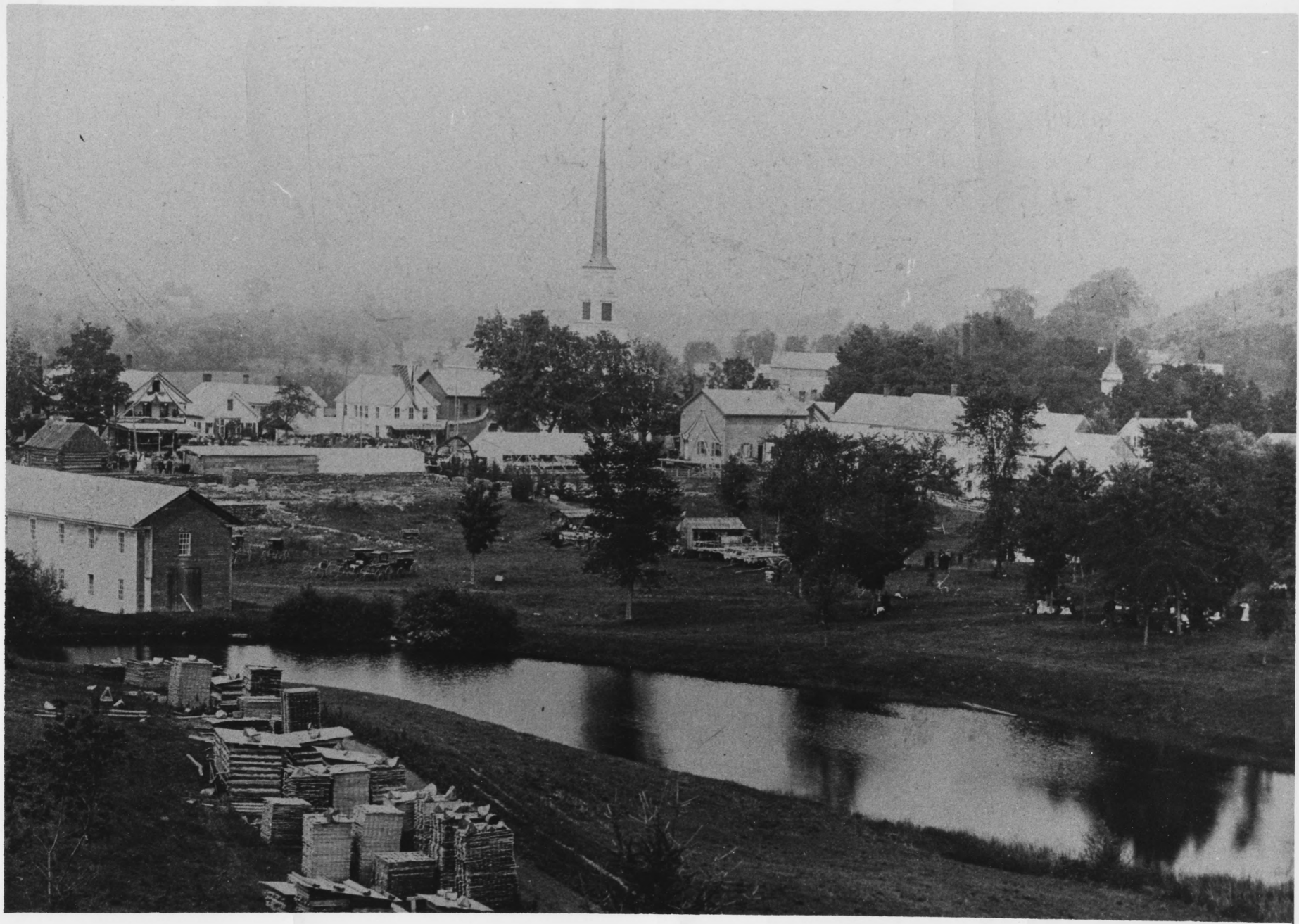
VERMONT DIVISION FOR HISTORIC PRESERVATION

CO. Lamoille TOWN Stowe DATE 7/77

SUBJECT Community Church Steeple, #1 VIEW N

FILE # 77-A-346 CREDIT Suzanne Hand

#23  
Green Mountain Antiques House + Barn



10  
M 25

NOV 15 1978

Stowe Village Historic District  
Stowe, VT

Credit: Suzanne Hand

Date: August 1977

Negative filed at Vermont Division for  
Historic Preservation

Description: Stowe Village

Photograph 8

JUL 31 1978

VERMONT DIVISION FOR HISTORIC PRESERVATION

CO. Lamoille TOWN Stowe DATE 10/77  
SUBJECT Stowe village VIEW Repro  
FILE # 77-A-503 CREDIT Richard C. Cote





Stowe Village Historic District  
Stowe, VT

Credit: Suzanne Hand

Date: August 1977

Negatives filed at Vermont Division for  
Historic Preservation

Description: Luce House (#2)

Photograph 9

JUL 31 1978

NOV 15 1978

346

19

VERMONT DIVISION FOR HISTORIC PRESERVATION

CO. Lansille TOWN Stowe DATE 7/77  
SUBJECT Luce House #2 VIEW S  
FILE # 77-A-346 CREDIT Suzanne Hand



Stowe Village Historic District  
Stowe, VT

Credit: Suzanne Hand

Date: August 1977

Negatives filed at Vermont Division  
for Historic Preservation

Description: Masonic Hall (#8)

Photograph 10

NOV 15 1978  
JUL 31 1978

P. 10

VERMONT DIVISION FOR HISTORIC PRESERVATION

CO. Lamoille TOWN Stowe DATE 7/77  
SUBJECT Masonic Hall #8 VIEW S  
FILE # 77-A-345 CREDIT Suzanne Hand



344

P. 11

Stowe Village Historic District  
Stowe, VT

JUL 31 1978

Credit: Suzanne Hand NOV 15 1978

Date: August 1977

Negatives filed at Vermont Division  
for Historic Preservation

Description: Main St., Val's Market,  
Shaw's Gen. Store, Old  
Photograph 11 Depot, Green Mtn. Inn  
(#16, 15, 14, 13)

VERMONT DIVISION FOR HISTORIC PRESERVATION

CO. Lamoille TOWN Stowe DATE 7/77  
SUBJECT Main Street, Val's Market, Shaw's VIEW W  
FILE # 77-A-344 CREDIT Suzanne Hand

#14 #13  
General Store, Old Depot, Green Mountain Inn



344

P. 12

Stowe Village Historic District  
Stowe, VT

NOV 15 1978

Credit: Suzanne Hand

Date: August 1977

Negative filed at Vermont Division for  
Historic Preservation

Description: Old Depot (#14)

Photograph 12

JUL 31 1978

VERMONT DIVISION FOR HISTORIC PRESERVATION

CO. Lamelle TOWN Stowe DATE 7/77  
SUBJECT Old Depot #14 VIEW SW  
FILE # 77-A-344 CREDIT Suzanne Hand





Stowe Village Historic District  
Stowe, VT

Credit: Suzanne Hand

Date: August 1977

NOV 15 1978

Negative filed at Vermont Division for  
Historic Preservation

Description: Shaw House (#18)

Photograph 13

JUL 31 1978

344

pr 13

VERMONT DIVISION FOR HISTORIC PRESERVATION

CO. Lamelle TOWN Stowe DATE 7/77  
SUBJECT Shaw House #18 VIEW S  
FILE # 77-A-344 CREDIT Suzanne Hand



Stowe Village Historic District  
Stowe, VT

Credit: Suzanne Hand NOV 15 1978

Date: August 1977

Negative filed at Vermont Division for  
Historic Preservation

Description: Shell Station, P.D. Pike  
House (#19, #20)

Photograph 14

JUL 31 1978

p. 14

VERMONT DIVISION FOR HISTORIC PRESERVATION

CO. Lamoille TOWN Stowe DATE 7/77  
SUBJECT Shell Station, P. D. Pike House #20 VIEW E  
FILE # 77-A-344 CREDIT Suzanne Hand



344

P-15

Stowe Village Historic District  
Stowe, VT

Credit: Suzanne Hand

NOV 15 1978

Date: August 1977

Negative filed at Vermont Division for  
Historic Preservation

Description: Parsonage, Stafford House,  
Bryant, Barrows, & Morton  
Houses (32, 33, 34, 35, 36)

Photograph 15

JUL 31 1978

VERMONT DIVISION FOR HISTORIC PRESERVATION

CO. Lamsville TOWN Stowe DATE 7/77  
SUBJECT Parsonage, Stafford House #32 VIEW E #33  
FILE # 77-A-344 CREDIT Suzanne Hand

#34 Barrows House #35  
Bryant House, Morton House #36



349

p. 16

Stowe Village Historic District  
Stowe, VT

Credit: Suzanne Hand JUL 31 1978  
Date: August 1977  
Negative filed at Vermont Division for  
Historic Preservation

Description: Gottlieb Entranceway  
(#31) NOV 15 1978  
Photograph 16

VERMONT DIVISION FOR HISTORIC PRESERVATION

CO. Lamoille TOWN Stowe DATE 8/77  
SUBJECT Gottlieb Entranceway #31 VIEW SW  
FILE # 77-A-349 CREDIT Suzanne Hand





Stowe Village Historic District  
Stowe, VT

Credit: Suzanne Hand

NOV 15 1978

Date: August 1977

Negative filed at Vermont Division for  
Historic Preservation

Description: Fry House, Rinderknect  
House (#43, #44) *r.tol.*

Photograph 17

JUL 31 1978

347

P.17

VERMONT DIVISION FOR HISTORIC PRESERVATION

CO. Lamoille TOWN Stowe DATE 7/77

SUBJECT Fry House (#43) Rinderknect VIEW NE House (#44) (r.tol.)

FILE # 77-A-347 CREDIT Suzanne Hand



RIVERBANK  
CEMETERY Rd.

CHEVROLET

747  
Stowe Village Historic District  
Stowe, VT

NOV 15 1978

Credit: Suzanne Hand

Date: August 1977

Negative filed at Vermont Division for  
Historic Preservation

Description: Walker House & Adams House  
(#46) (#47)

Photograph 18

JUL 31 1978

P-18

VERMONT DIVISION FOR HISTORIC PRESERVATION

CO. Lamoille TOWN Stowe DATE 7/77  
SUBJECT Walker House (#46) Adams House <sup>(#47)</sup> VIEW SW  
FILE # 77-A-347 CREDIT Suzanne Hand



347

P. 19

Stowe Village Historic District  
 Stowe, VT  
 NOV 15 1978  
 Credit: Suzanne Hand  
 Date: August 1977  
 Negative filed at Vermont Division for  
 Historic Preservation  
 Description: Churchill House (#50)  
 Photograph 19 JUL 31 1978

VERMONT DIVISION FOR HISTORIC PRESERVATION

CO Lamaille TOWN Stowe DATE 7/77  
 SUBJECT Churchill House VIEW N #50  
 FILE # 77-A-347 CREDIT Suzanne Hand



347

p. 20

Stowe Village Historic District  
Stowe, VT

NOV 15 1978

Credit: Suzanne Hand

Date: August 1977

Negative filed at Vermont Division for  
Historic Preservation

Description: Nelson House (#53)

Photograph 20

JUL 31 1977

VERMONT DIVISION FOR HISTORIC PRESERVATION

CO. Lanselle TOWN Stowe DATE 7/77  
SUBJECT Nelson House #53 VIEW NW  
FILE # 77-A-347 CREDIT Suzanne Hand





Stowe Village Historic District  
Stowe, VT

NOV 15 1978

Credit: Suzanne Hand

Date: August 1977

Negative filed at Vermont Division for  
Historic Preservation

Description: Grant House (#54)

Photograph 21

JUL 31 1978

347

1-21

VERMONT DIVISION FOR HISTORIC PRESERVATION

CO. Lamoille TOWN Stowe DATE 7/77  
SUBJECT Grant House #54 VIEW N  
FILE # 77-A-347 CREDIT Suzanne Hand



349  
Stowe Village Historic District  
Stowe, VT

Credit: Suzanne Hand

NOV 15 1978

Date: August 1977

Negative filed at Vermont Division for  
Historic Preservation

Description: Rudisill Entranceway (#59)

Photograph 22

JUL 31 1978

p. 22

VERMONT DIVISION FOR HISTORIC PRESERVATION

CO. Lamoille TOWN Stowe DATE 8/77  
SUBJECT Rudisill Entranceway VIEW NW  
FILE # 77-A-349 CREDIT Suzanne Hand

#59



344

p 23

Stowe Village Historic District  
Stowe, VT

Credit: Suzanne Hand <sup>JUL 31 1978</sup>

Date: August 1977

Negative filed at Vermont Division for  
Historic Preservation

Description: Stowe Hardware Store (#60)

Photograph 23

NOV 15 1978

VERMONT DIVISION FOR HISTORIC PRESERVATION

CO. Lamoille TOWN Stowe DATE 7/77  
SUBJECT Stowe Hardware Store VIEW NE #60  
FILE # 77-A-344 CREDIT Suzanne Hand



344

p. 24

Stowe Village Historic District  
Stowe, VT

JUL 31 1978

Credit: Suzanne Hand

Date: August 1977

Negative filed at Vermont Division for  
Historic Preservation

Description: Akeley Memorial Building  
(#65)

Photograph 24

NOV 15 1978

VERMONT DIVISION FOR HISTORIC PRESERVATION

CO. Lamoille TOWN Stowe DATE 7/77  
 SUBJECT Akeley Memorial Building #65 VIEW N  
 FILE # 77-A-344 CREDIT Suzanne Hand





Stowe Village Historic District  
Stowe, VT

Credit: Suzanne Hand

Date: August 1977

NOV 25 1978

Negative filed at Vermont Division for  
Historic Preservation

Description: Old Cemetery (#66)

Photograph 25

JUL 31 1978

344

P 25

VERMONT DIVISION FOR HISTORIC PRESERVATION

CO. Lamoille TOWN Stowe DATE 7/77  
SUBJECT Old Cemetery #66 VIEW NW  
FILE # 77-A-344 CREDIT Suzanne Hand



244  
Stowe Village Historic District  
Stowe, VT

Credit: Suzanne Hand

NOV 15 1978

Date: August 1977

Negative filed at Vermont Division for  
Historic Preservation

Description: McMahon Store (#69)

Photograph 26

JUL 31 1978

1-28

VERMONT DIVISION FOR HISTORIC PRESERVATION

CO. Lansville TOWN Stowe DATE 7/77  
SUBJECT McMahon Store #69 VIEW NW  
FILE # 77-A-344 CREDIT Suzanne Hand



344

p. 27

Stowe Village Historic District  
Stowe, VT

Credit: Suzanne Hand <sup>JUL 31 1978</sup>

Date: August 1977

Negative filed at Vermont Division for  
Historic Preservation

Description: McMahon House (#70)

Photograph 27 NOV 15 1978

VERMONT DIVISION FOR HISTORIC PRESERVATION

CO. Lamoille TOWN Stowe DATE 7/77  
SUBJECT McMahon House VIEW N  
FILE # 77-A-344 CREDIT Suzanne Hand

70



348

p. 28

Stowe Village Historic District  
Stowe, VT

Credit: Suzanne Hand JUL 31 1978

Date: August 1977

Negative filed at Vermont Division for  
Historic Preservation

Description: Down Barn & Meadow (#72)

Photograph 28

NOV 15 1978

VERMONT DIVISION FOR HISTORIC PRESERVATION

CO. Lamoille TOWN Stowe DATE 8/77  
SUBJECT Down Barn + Meadow VIEW NE  
FILE # 77-A-348 CREDIT Suzanne Hand





Stowe Village Historic District  
Stowe, VT

Credit: Suzanne Hand

Date: August 1977

Negative filed at Vermont Division for  
Historic Preservation

Description: Burger House (#80)

Photograph 29

JUL 31 1978

NOV 15 1978

p. 29

348

VERMONT DIVISION FOR HISTORIC PRESERVATION

CO. Lamaille TOWN Stowe DATE 8/77  
SUBJECT Burger House #80 VIEW NW  
FILE # 77-A-348 CREDIT Suzanne Hand



Stowe Village Historic District  
Stowe, VT

Credit: Suzanne Hand <sup>UL 31 1978</sup> 349  
Date: August 1977  
Negative filed at Vermont Division for  
Historic Preservation

Description: The Yodler (#83)

Photograph 30

NOV 15 1978

P 30

VERMONT DIVISION FOR HISTORIC PRESERVATION

CO. Lamoille TOWN Stowe DATE 8/77  
SUBJECT The Yodler #83 VIEW NW  
FILE # 77-A-349 CREDIT Suzanne Hand



349

p. 31

NOV 15 1978

Stowe Village Historic District  
Stowe, VT

Credit: Suzanne Hand  
Date: August 1977  
Negative filed at Vermont Division for  
Historic Preservation

Description: McEwen, Durett, Anders &  
Bedell House (#100, 101, 102  
& 1)  
Photograph 31

VERMONT DIVISION FOR HISTORIC PRESERVATION

CO. Rambold TOWN Stowe DATE 8/77  
SUBJECT McEwen, Durett, Anders House VIEW SW and Bedell House  
FILE # 77-A-349 CREDIT Suzanne Hand



346

p. 32

NOV 15 1978

Stowe Village Historic District  
Stowe, VT

Credit: Suzanne Hand JUL 31 1978

Date: August 1977

Negative filed at Vermont Division for  
Historic Preservation

Description: C.E. Burt, Billings House  
                  (#111)      (#112)

Photograph 32

VERMONT DIVISION FOR HISTORIC PRESERVATION

CO. Ramville TOWN Stowe DATE 7/77  
SUBJECT C.E. Burt House, Billings House VIEW SW  
FILE # 77-A-346 CREDIT Suzanne Hand





PARKING FOR  
FAMILY ONLY  
NO OTHER VEHICLES  
OR TRAILERS ALLOWED

Stowe Village Historic District  
Stowe, VT

Credit: Suzanne Hand JUL 31 1978

Date: August 1977

Negative filed at Vermont Division for  
Historic Preservation

Description: Union Bank, Adams House,  
Old Stowe High School  
Photograph 33 (#116,115,124)

345

NOV 15 1978

P. 33

VERMONT DIVISION FOR HISTORIC PRESERVATION

CO. Lamoille TOWN Stowe DATE 7/77

SUBJECT Union Bank, Adams House, Old Stowe High Stowe VIEW SE

FILE # 77-A-345 CREDIT Suzanne Hand



49480 36008 +00+00+00+00  
06/27/01 CSL Stowe, VT

Cabinet Shop/Cold Springs Place, Stowe Village Historic District  
Lamaille County, Vermont



4948< 34009 +0000+00+00  
06/27/01 CSL Stowe Vt

Anders House, Stowe Village Historic District

Lamoille County, Vermont



4948 31 000 +00+00+00+00  
06/27/81 C&L Stowe, UT

Thomas Straw House, Stowe Village Historic District  
Lamoille County, Vermont







4948< 38>885 +88+88+88+88  
06/27/01 CSL Stowe, UT

Blodgett House, Stowe Village Historic District  
Lamoille County, Vermont  
#4a/b



4948< 29>812 +00+00+00+00  
06/27/01 CSL Stone

House, Stowe Village Historic District

Lamoille County, Vermont



4948< 24>024 +0000+00+00  
06/27/01 CSL Stowe, VT

Sullivan House, Stowe Village Historic District  
Lamoille County, Vermont

6



188

HARRINGTON'S  
Deerfield Village Furniture

Bacon Cheese

Strip

CAFE

MEATS

DELI

4948< 23>028 +00+00+00+00  
06/27/01 CSL Stowe, VT

Harrington's, Stowe Village Historic District  
Lamoille County, Vermont  
7





Stowe  
LAUNDRY & DRY CLEANERS

4948< 21>032 +0000000+00  
06/27/01 CSL Stowe.

Stowe Laundromat, Stowe Village Historic District  
Lamoille County, Vermont



4949< 5A>029 +00+00+00+00  
06/27/01 CSL Stowe, VT

Marlon Wright House, Stowe Village Historic District  
Lamoille County, Vermont



35250 70883 +00+00+00-02 000000  
12/11/01 CSL Stowe,VT

Clair House, Stowe Village Historic District

Lamoille County, Vermont



4948< 20>036 +00+00+00+00  
06/27/01 CSL Stowe

The Annex, Stowe Village Historic District  
Lamoille County, Vermont





3525< 4>088 +00+00+00-01 000000  
12/11/01 CSL Stowe, VT

House, Stowe Village Historic District  
Lamoille County, Vermont



35254 2>092 +00+00+00-03 000000  
12/11/01 CSL Stowe, UT

River Court Condominiums, Stowe Village Historic District  
Lamoille County, Vermont



4948< 16>040 +00+00+00+00  
06/27/01 CSL Stowe, VT

Mailboxes Etc., Stowe Village Historic District  
Lancaster County, Vermont



6< 2>002 +00+00+00-01  
06/13/01 CSL Stowe, VT

Churchill/Couch House, Stowe Village Historic District  
Lamoille County, Vermont





5< 1>001 +00+00+00-03  
06/13/01 CSL Stowe, VT

House, Stowe Village Historic District  
Lamoille County, Vermont



Mac's Stone MARKET

4948< 15>041 700+00+00+00  
06/27/01 CSL Stowe, VT

Mac's Market, Stowe Village Historic District  
Lamoille County, Vermont



6< 1>005 +00+00+00+00  
06/13/01 CSL Stowe, VT

Thompson Building, Stowe Village Historic District  
Lamoille County, Vermont  
#18



4948< 12>050 +00+00+00+00  
06/27/01 CSL Stowe, VT

Guptil House, Stowe Village Historic District  
Lamoille County, Vermont  
19





4948< 14>045 +00+00+00+00  
06/27/01 CSL Stowe, UT

Beckerhoff House, Stowe Village Historic District  
Lamoille County, Vermont  
20



4948< 11>054 +00+00+00+00  
06/27/01 CSL Stowe, VT

Masonic Hall, Stowe Village Historic District  
Lamoille County, Vermont



4948< 10>058 +00+00+00700  
06/27/01 CSL Stowe, VT

Vermont Heritage Gifts & Crafts, Stowe Village Historic District  
Lamoille County, Vermont  
22



4948( 8.000 +00+00+00+00  
06/27/01 CSL Stowe, UT

Brookside Offices, Stone Village Historic District

Lamoille County, Vermont





3525K 89079 +00+00+00-03 000000  
12/11/01 CSL Stowe, UT

House, Stowe Village Historic District

Lamoille County, Vermont



3525< 12>074 +00+00+00-02 000000  
12/11/01 CSL Stowe,VT

Carriage Shop, Stowe Village Historic District  
Lamoille County, Vermont

25



4948< 5 067 +00+00+00+00  
06/27/01 CSL Stowe, UT

Old Town Hall, Stowe Village Historic District  
Lamoille County, Vermont



**M**  
**MAPLEFIELDS**  
RESTAURANT

**Mobil**

1.53  
1.67  
1.77

Worker in white overalls

4948< 7>065 +00+00+00+00  
06/27/01 CSL Stowe, VT

Maplefields, Stowe Village Historic District  
Lamoille County, Vermont  
27





STOP

108

M  
MAPLEFIELDS

3525< 14>072 +00+00+00-02 000000  
12/11/01 CSL Stowe, UT

Elisha Lady/Bentley House, Stowe Village Historic District  
Lamoille County, Vermont



303 0311 N N 12

House/Commercial Space, Stowe Village Historic District  
Lamoille County, Vermont  
29



8 > 1>001+00+00+00+00  
06 13/01 CSL Stowe, VT

Barn/Blacksmith Shop, Stowe Village Historic District  
Lamoille County, Vermont



7< 1>001 +00+00+00+00  
06/13/01 CSL Stowe, VT

Stowe Pottery, Stowe Village Historic District  
Lamoille County, Vermont





8801< 4>009 +00+00+00+02 000000  
08/26/02 CSL Stowe, VT

Morris Cady House, Stowe Village Historic District  
Lamoille County, Vermont



9< 1>005 +00+00+00-02  
06/13/01 CSL Stowe, VT

Stowe Inn at Little River Condos, Stowe Village Historic District  
Lamoille County, Vermont



9< 2>004 +00+00+00-01  
06/13/01 CSL Stowe, VT

House, Stowe Village Historic District  
Lamoille County, Vermont  
34



11< 1>003 +00+00+00+00  
06/13/01 CSL Stowe, VT

Henry Kaiser House, Stowe Village Historic District  
Lamoille County, Vermont





3525< 16>068 +00+00+00-04 000000  
12/11/01 CSL Stowe, UT

Edward Coburn House, Stowe Village Historic Distric  
Lamoille County, Vermont  
36a



8801< 5>005 +00+00+00-01 000000  
08/26/02 CSL Stowe, VT

Barn, Stowe Village Historic District  
Lamoille County, Vermont  
366



4950(27A)007 +00+00+00+00  
06/27/01 CSL Stowe, UT

Emery Town/Burger House, Stowe Village Historic District  
Lamoille County, Vermont  
37



3525< 20>064 +00+00+00-03 000000  
12/11/01 CSL Stowe, VT

House, Stowe Village Historic District  
Lamoille County, Vermont





030311 N N P 2

Stowe Village Apartments, Stowe Village Historic  
District  
Lamoille County, Vermont



3525< 21>060 +00+00+00-03 000000  
12/11/01 CSL Stowe, UT

Edgerton House, Stowe Village Historic District  
Lamoille County, Vermont



LIAM A. KELK  
ATTORNEY AT LAW

company

ESTABLISHED 1888

3030311 NNN 42

House, Stowe Village Historic District  
Lamoille County, Vermont



4950<32A>004 +00+00+00+00  
06/27/01 CSL Stowe, VT

Azelda Weeks House, Stowe Village Historic District  
Lamoille County, Vermont  
42





4950<31A>001 +00+00+00+00  
06/27/01 CSL Stone, UT

Lamoille County, Vermont  
43



Horse, Stone Village Historic District  
Lamoille County, Vermont

#44

06/13/01 C&L Stone, VT  
013< 1>001 +00+00+00-02



4950<29A>007 +00+00+00+00  
06/27/01 CSL Stowe, VT

Hodge Horse/Downer Farm, Stowe Village Historic District  
Lamoille County, Vermont

45a



DOWNER FARM

12< 2X002 +00+00+00-02  
06/13/01 CSL 54006, UT

Hodge House / Downer Farm, Stowe Village Historic District  
Lamoille County, Vermont  
#45b





10< 1>001+00+00+00-04  
06/13/01 CSL Stowe, VT

Sargent House / snowboard, Stowe Village Historic District  
Lamoille County, Vermont

#46



Jim Stiles House, Stowe Village Historic District  
Lamoille County, Vermont

#47

15< 2>003 +00+00+00-02  
06/13/01 CSL Stowe, VT



48 2>001 + 00+00+00+00  
06/13/01 CSL Stowe, VT

Robinson/McMahon House, Stowe Village Historic District  
Lamoille County, Vermont  
#48



3525(424)055 +00+00+00-00 000000  
12/11/01 CSL Stowe, UT

Mansfield House, Stowe Village Historic District  
Lamoille County, Vermont





CARLSON &

REAL ESTATE

4948< 3>078 +00+00+00+00  
06/27/01 CSL Stowe, VT

General Store, Stone Village Historic District  
Lamoille County, Vermont  
#50



VERMONT CRAFTS

MERCANTILE

VERMONT FLOUR SHOP

VERMONT FLOUR SHOP

ONE WAY

The Oak Store

WALK

WAY OF

WEST

10K 47003 +00+00+00-05  
06/07/01 CSL Stowe, VT

The Old Depot, Stowe Village Historic District  
Lamoille County, Vermont



Franklin Lamolite  
Bank

24 HOUR  
ACCESS ATM

4948< 17082 +00+00+00+00  
06/27/01 CSL Stowe, VT

Franklin Lamoille Bank, Stowe Village Historic District  
Lamoille County, Vermont  
#52



H.E. SHAW  
SPORT SHOP

SHAW'S

SHAW'S GENERAL STORE

SHAW'S SPORTSWEAR  
Sporting Goods  
Family Footwear  
Traditional Clothing

CELLULAR ONE

9 1>015 +00+00+00-03  
06/07/01 CSL Stowe, VT

Shaw's General Store, Stowe Village Historic District  
Lamoille County, Vermont





Visitor  
Information

LODGING

Community Events  
Dining and Shopping Guide  
Central Reservations

9< 4>002 +00+00+00-03  
06/07/01 CSL Stowe, VT

Stowe Area Association, Stowe Village Historic District  
Lamoille County, Vermont

54



2< 3>006 +00+00+00-02  
06/07/01 CSL Stowe, VT

Akeley Memorial Building, Stowe Village Historic District  
Lamoille County, Vermont



Val's Country Store

100%  
MAPLE  
SYRUP

Flower  
Power

06/07/01 1>015 +00+00+00-02  
CSL Stowe, VT

Val's Country Store, Stowe Village Historic District  
Lamoille County, Vermont  
#56



8: 2>009 +00+00+00-02  
06/07/01 CSL Stowe, VT

Simmons/Newton House Stowe Village Historic District  
Lamoille County, Vermont





Stafford's  
Country Store

DRUG BUNKER

Stafford's Country Store

GARDEN & CITY

CHEVROLET

3< 1>013 +00+00+00 01  
06/07/01 CSL Stowe, VT

Stafford Funeral Home,  
Stowe Village Historic District  
Lamoille County, Vermont  
#58



74 1>009 +00+00+00-03  
06/07/01 CSL Stowe, VT

Pike/Shaw House, Stowe Village Historic District  
Camlille County, Vermont



3< 2>012 +00+00+00-02  
06/07/01 CSL Stowe, VT

Lackey House, Stowe Village Historic District  
Lamoille County, Vermont

60A



4>003 +00+00+00-02  
06x07/01 CSL Stowe, VT

Lackey's Variety Store, Stowe Village Historic District  
Lamoille County, Vermont

60B





4>001 +00+00+00-04  
06/07/01 CSL Stowe, UT

P.D. Pike House, Stowe Village Historic District  
Lamoille County, Vermont

61



3525< 25>052 +00+00+00-04 000000  
12/11/01 CSL Stowe, VT

Community Church, Stowe Village Historic District  
Lamoille County, Vermont

62



5< 4>001 +00+00+00-02  
06/07/01 CSL Stowe, UT

O.W. Butler House, Stowe Village Historic District  
Lamoille County, Vermont



52 1>015 +00+00+00-03  
06/07/01 CSL Stowe, VT

Stowe Hardware, Stowe Village Historic District  
Lamoille County, Vermont #64





1< 2>011 +00+00+00-01  
06/07/01 CSL Stowe, VT

Lorejoy House, Stowe Village Historic District  
Lamoille County, Vermont  
#65a



1< 3>005 +00+00+00-01  
06/07/01 CSI Stowe, VT

barn, Stowe Village Historic District  
Lamoille County, Vermont

65b



1< 4>003 +00+00+00-02  
06/07/01 CSL Stowe, VT

House, Stowe Village Historic District  
Lamoille County, Vermont

60a



4< 4>043 +00+00+00-01 000000  
08/16/02 CSL Stowe, VT

Garage, Stowe Village Historic District  
Lamoille County, Vermont  
66b





10< 2>004 +00+00+00-01 06/07/01 CSL Storage NT

Hart House, Stone Village Historic District  
Lamoille County, Vermont  
#67a



4< 5>039 +00+00+00+00 000000  
08/16/02 CSL Stowe, VT

Garage, Stowe Village Historic District  
Lamoille County, Vermont  
67b



4< 1>005 +00+00+00-02  
06/07/01 CSL Stowe, VT

George Wilkins House, Stowe Village Historic District  
Lamoille County, Vermont  
#68 a



4< 1>035 +00+00+00-02 000000  
08/16/02 CSL Stowe, VT

barn, Stowe Village Historic District  
Lamoille County, Vermont  
68b





253  
Stackpole & French  
LAW OFFICES  
LAW OFFICES of  
Thomas J. Amidon



12 < 1002 +00+00+00-01  
06/07/01 CSL Stowe, VT



255 Maple Street, Stowe Village Historic District  
Lamoille County, VERMONT  
#69



4< 4>023 +00+00+00-02 000000  
08/16/02 CSL Stowe, VT

Sallies House, Stowe Village Historic District  
Lamoille County, Vermont  
70



1>012 +00+00+00-02  
06/07/01 CSL Stowe, VT

Wilkins/Nelson House, Stowe Village  
Lamoille County, Vermont  
#71a



4< 2>031 +00+00+00-01 000000  
08/16/02 CSL Stowe, VT

Garage, Stowe Village Historic District  
Lamoille County, Vermont  
71 b





8< 1>005 +00+00+00-02  
06/07/01 CSL Stowe, VT

H.L. Perkins House, Stowe Village Historic District  
Lamoille County, Vermont  
#72 a



4< 3>027 +00+00+00-01 000000  
08/16/02 CSL Stowe, UT

Garage, Stowe Village Historic District  
Lamoille County, Vermont

72 b



9< 1>004 +00+00+00-02  
06/07/01 CSL Stowe, VT

House, Stowe Village Historic District  
Lamoille County, Vermont

73 a



4950<16A>02 100+00+00+00  
05/27/01 CSL Stowe, VT

barn, Stowe Village Historic District  
Lamalle County, Vermont





1< 1>003 +00+00+00-02  
06/06/01 CSL Stowe, VT

Churchill House, Stowe Village Historic District  
Lamoille County, Vermont  
#74a



4< 4>007 400+00+00-01 .000000  
08/16/02 CSL Stowe,VT

Churchill House, Stowe Village Historic District  
Lamoille County, Vermont  
74a



4< 5>019 +00+00+00-02 000000  
08/16/02 CSL Stowe, VT

Garage, Stowe Village Historic District  
Lamoille County, Vermont

746



2< 2>005 +00+00+00+00  
06/06/01 CSL Stowe, VT

Wilkins House, Stowe Village Historic District  
Lansville County, Vermont  
#75





2 3,003 +00+00+00+00  
06/06/01 CSL Stowe, VT

Wells House, Stowe Village Historic District  
Lamoille County, Vermont

76



4050122001018 +00+00+00+00  
06/27/01 CSL Stowe, VT

Town House, Stowe Village Historic District  
Lamoille County, Vermont  
77a



4950(200)000 100+00+00+00  
06/27/01 CSL Stone, UT

barn, Stone Village Historic District  
Lamoille County, Vermont

776



4950(24A)01J +00+00+00+00  
06/27/01 CCL Stowe, VT

Spaulding House, Stone Village Historic District  
Lamoille County, Vermont

78





6< 17009 +00+00+00-01  
06/06/01 CSL Stowe, VT

Hackett House, Stowe Village Historic District  
Lamoille County, Vermont



4< 3>001 +00+00+00-02  
06/06/01 CSL Stowe, VT

Weeks House, Stowe Village Historic District  
Lamoille County, Vermont



4< 1>009 400+00+00-01  
06/06/01 CSL Stowe, VT

A. Sallies House, Stowe Village Historic District  
Lamoille County, Vermont  
81



37 17006 +00+00+00-01  
06/06/01 C&L Stowe, VT

Prosper Butts House, Stowe Village Historic District  
Lamoille County, Vermont

82a





4< 2>011 +00+00+00+00 000000  
08/16/02 CSL Stowe,VT

Shed, Stowe Village Historic District  
Lamoille County, Vermont  
82 b



4950(18A)01A, +00+00+00+00  
06/27/01 CSL Stowe, VT

Wilkins House, Stowe Village Historic District  
Lamoille County, Vermont  
83a



4< 1>015 +00+00+00-01 000000  
08/16/02 CSL Stowe, VT

Garage, Stowe Village Historic District  
Lamoille County, Vermont  
836



3030311 N N N 32

Robinson House, Stone Village Historic District  
Lamoille County, Vermont





4950<13A>027 500+00+00+00  
06/27/01 CSL Stone, NY

Wood House, Stowe Village Historic District  
Lamoille County, Vermont

85



6< 3>001 +00+00+00-01  
06/07/01 CSL Stowe, VT

J.H. Bennett House, Stowe Village Historic District  
Lamoille County, Vermont



5< 3>000 +00+00+00-02  
06/07/01 CSL Stowe, VT

Harry Gibbs House, Stowe Village Historic District  
Lamoille County, Vermont  
87 a/b



5< 2>000 +00+00+00-02  
06/07/01 CSL Stowe, VT

David T. Allen House, Stowe Village Historic District  
Lamoille County, Vermont  
88





3< 1>008 +00+00+00-01  
06/07/01 CSL Stowe, UT

Offices, Stowe Village Historic District  
Lamoille County, Vermont



11 < 2>001 00+00+00-02 10/20/90  
CSL Stowe, VT

House, Stowe Village Historic District  
Lamoille County, Vermont

90



3525< 27>044 +00+00+00-02 000000  
12/11/01 CSL Stowe, VT

House, Stowe Village Historic District  
Lamoille County, Vermont



3525< 26>048 +00+00+00-03 000000  
12/11/01 CSL Stowe, VT

Community Church Parsonage, Stowe Village Historic District  
Lamoille County, Vermont





9< 1>011 +00+00+00-01  
06/06/01 CSL Stowe, VT

Churchill and Wilkins House, Stowe Village Historic District  
Lamoille County, Vermont

93a



4< 3>047 +00+00+00-02 000000  
08/16/02 CSL Stowe,VT

Garage, Stowe Village Historic District  
Lamoille County, Vermont

936



4950< 7A>03L +00+00+00+00  
06-27-01 CSL Stowe, VT

House, Stowe Village Historic District  
Lamoille County, Vermont



9< 3>006 +00+00+00-01  
06/06/01 CSL Stowe, VT

John Latouch House, Stowe Village Historic District  
Lamoille County, Vermont

95







10< 2>004 +00+00+00-02  
06/07/01 Cell Stowe, VT

House, Stowe Village Historic District  
Lamoille County, Vermont



4950 5A 838 +00+00+00+00  
06/27/01 CSL Stowe, VT

John Stafford House, Stowe Village Historic  
District  
Lamoille County, Vermont

97



3525< 28>040 +00+00+00-02 000000  
12/11/01 CSL Stowe, VT

Thomas Downer/Curtis House, Stowe Village Historic District  
Lamoille County, Vermont

98



3525< 29>036 +00+00+00-03 000000  
12/11/01 CSL Stowe, VT

Phineus Wilkins/Marguerite Stafford, Stowe Village Historic District  
Lamoille County, Vermont  
99





4950< 1A>040 +00+00+00+00  
06/27/01 CSL Stowe, VT

Lamson/Foregger House, Stowe Village Historic District  
Lamoille County, Vermont



8< 2>001 +00+00+00-02  
06/06/01 CSL Stowe, VT

Lamson/Foregger House, Stowe Village Historic District  
Lamoille County, Vermont  
100



10< 2>001+00+00+00-02 10/06/90 06/06/01 CSL Stowe, VT

Town/Foregger House, Stowe Village Historic District  
Lamoille County, Vermont

101a



4< 1>051 +00+00+00-01 000000  
08/16/02 CSL Stowe, VT

barn, Stowe Village Historic District  
Lamoille County, Vermont  
101b





Country  
Village Rentals  
1925-1926

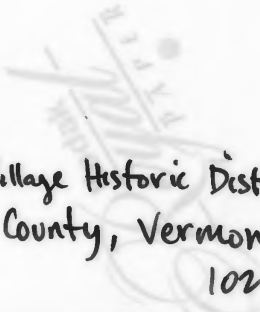
Country  
Village Rentals

1>004 +00+00+00-02  
06/06/01 CSL Stowe, UT

Henry Barner Barnes House, Stowe Village Historic District  
Lamoille County, Vermont

102a





6< 3>002 +00+00+00-03  
06/06/01 CSL Stowe, VT

Henry Barner Barnes House, Stowe Village Historic District  
Lamoille County, Vermont

102 b



5< 3>005 +00+00+00-03  
06/07/01 CSL Stowe, VT

Union/Brick Store, Stowe Village Historic District  
Lamoille County, Vermont  
103



4949<24A>001 +00+00+00+00  
06/27/01 CSL Stowe, VT

Blue Moon Cafe, Stowe Village Historic District  
Lamoille County, Vermont

#104







4< 1>004 +00+00+00-03  
06/07/01 CSL Stowe, VT

Doncaster House, Stowe Village Historic District  
Lamoille County, Vermont



4949<22A>007 +00+00+00+00  
05 27 01 CSL Stowe, UT

The Blau House, Stowe Village Historic District  
Lamoille County, Vermont  
#106a



4< 4>055 +00+00+00-01 000000  
08/16/02 CSL Stowe, VT

Office, Stowe Village Historic District  
Lamoille County, Vermont

106b



3525 317025 +00+00+00-03 000000  
12/11/01 C&L Stowe, UT

House, Stowe Village Historic District  
Lamoille County, Vermont

107a





35254 300031 +00+00+00-04 000000  
12/11/01 CSL Stowe, VT

Shed, Stowe Village Historic District  
Lamoille County, Vermont  
1076



2< 3>001 +00+00+00-02  
06/07/01 CSL Stowe, VT

Bloody Brook School, Stowe Village Historic District  
Lamoille County, Vermont  
108



4949<20A>007 +00+00+00+00  
00 00 01 CSL Stowe, UT

Old Stowe High School/Helen Day Art Center, Stowe Village Historic District  
Lamoille County, Vermont



THE PRESS

11 < 1004 +00+00+ +00-01  
06/07/01 CSL Stowe, VT

Xpress, Stone Village Historic District  
Lamoille County, Vermont  
110





*GEMS*  
**GEMS**  
**Jewelry**  
JEWELRY STORE

OPEN

*GEMS*  
**GEMS**

File  
Jewelry

4949<194>012 +00+00+00+00  
06/27/01 CST Stowe, UT

Stowe Arms, Stowe Village Historic District  
Lamoille County, Vermont

#111



5< 1>010 +00+00+00-01  
06/07/01 CSL Stowe, VT

Union Bank, Stowe Village Historic District  
Lamoille County, Vermont

112



5< 3>004 +00+00+00-03  
06/07/01 CSL Stowe, VT

77 Park Street, Stowe Village Historic District  
Lamoille County, Vermont

113



3525< 33>020 +00+00+00-02 000000  
12/11/01 CSL Stowe,VT

House, Stowe Village Historic District  
Lamoille County, Vermont

114





8800< 2>006 +00+00+00+00 000000  
08/26/02 CSL Stowe, VT

Condominiums, Stowe Village Historic District

Lamoille County, Vermont

114



THE KIDS  
SCHOOL

3525< 32>024 +00+00+00-03 000000  
12/11/01 CSL Stowe, VT

Billings House, Stowe Village Historic District  
Lamoille County, Vermont

115a



12-11-01 34>013 +00+00+00-04 000000  
CSL Stowe, VT

Shed , Stowe Village Historic District  
Lamoille County, Vermont

115 b



6< 1>002 +00+00+00-02  
06/07/01 CSL Stowe, VT

CE. Burt House, Stowe Village Historic District  
Lamoille County, Vermont

116





STOWE-COUNTRY BRITAIN  
CONSTRUCTION INC. 2001-2002

11 PARK STREET  
Stowe Education Fund  
GLOBAL TREASURES  
FROM ARTS & SCIENCE CENTER  
COUNTRY GENERAL  
CONSTRUCTION & SERVICE  
STEEL CONSTRUCTION

4949<17A>020,+00+00+00+00  
06/27/01 CSL Stowe, VT

Office Building, Stowe Village Historic District  
Lamoille County, Vermont

117



2< 1>001. +00+00+00-02  
06/13/01 CSL Stowe, VT

W.H.H. Bingham House, Stowe Village Historic District  
Lamoille County, Vermont  
118 a



4< 2>059 +00+00+00-02 000000  
08/16/02 CSL Stowe, VT

House, Stowe Village Historic District  
Lamoille County, Vermont  
118b



Stephen Casskin, M.D.

Family Practice

Holde B. Barsley, M.D.  
Pediatrics

4949<180>016 +00+00+00+00  
06/27/01 CS Lostowe, VT

Doctors Office, Stowe Village Historic District  
Lamoille County, Vermont  
119





1< 1>007 +00+00+00-01  
06/13/01 CSL Stowe, VT

Depot Street Shop, Stowe Village Historic District  
Lamoille County, Vermont  
120



3525< 35>012 +00+00+00-02 000000  
12/11/01 CSL Stowe, VT

Office, Stowe Village Historic District  
Lamoille County, Vermont  
121



8800< 3>005 +00+00+00-01 000000  
08/26/02 CSL Stowe, VT

Ampersand Property, Stowe Village Historic District  
Lamoille County, Vermont  
122a



12/11/01 05L Stowe, UT

Ampersand Property, Stone Village Historic District  
Lamoille County, Vermont  
122b





GREEN MOUNTAIN INN

SINCE 1877

THE WHIP  
BAR & GRILL

3525< 36>008 +00+00+00-03 000000  
12/11/01 CSL Stowe.VT

Mill Building, Stowe Village Historic District  
Lamoille County, Vermont  
123



4949<12A>013 +00+00+00+00  
06/27/01 CSL Stowe, VT

Smith House, Stowe Village Historic District  
Lamoille County, Vermont  
124



0030311 N N N 2

Old cemetery, Stone Village Historic District  
Lamoille County, Vermont

125a



4949< 8A>022 +00+00+00+00  
06/27/01 CSL Stowe, VT

Garage, Stowe Village Historic District  
Lamoille County, Vermont

125 b





School Entrance and Parking  
Recreation Facilities

4< 5>003 +00+00+00-02 000000  
08/16/02 CSL Stowe,VT

Elementary School, Stowe Village Historic District  
Lamoille County, Vermont  
126