



217

United States Department of the Interior  
National Park Service

# National Register of Historic Places Registration Form

This form is for use in nominating or requesting determinations for individual properties and districts. See instructions in National Register Bulletin, *How to Complete the National Register of Historic Places Registration Form*. If any item does not apply to the property being documented, enter "N/A" for "not applicable." For functions, architectural classification, materials, and areas of significance, enter only categories and subcategories from the instructions. Place additional certification comments, entries, and narrative items on continuation sheets if needed (NPS Form 10-900a).

### 1. Name of Property

historic name Dodge City Municipal Building  
other names/site number KHRI # 057-1370-00413

### 2. Location

street & number 501 West Spruce Street  not for publication  
city or town Dodge City  vicinity  
state Kansas code KS county Ford code 057 zip code 67801

### 3. State/Federal Agency Certification

As the designated authority under the National Historic Preservation Act, as amended,

I hereby certify that this x nomination \_\_\_ request for determination of eligibility meets the documentation standards for registering properties in the National Register of Historic Places and meets the procedural and professional requirements set forth in 36 CFR Part 60.

In my opinion, the property x meets \_\_\_ does not meet the National Register Criteria. I recommend that this property be considered significant at the following level(s) of significance:

    national     statewide   x   local

*Katrina Jelmer* 3-6-13  
Signature of certifying official Date  
DSHPO  
Title State or Federal agency/bureau or Tribal Government

In my opinion, the property \_\_\_ meets \_\_\_ does not meet the National Register criteria.

\_\_\_\_\_  
Signature of commenting official Date  
\_\_\_\_\_  
Title State or Federal agency/bureau or Tribal Government

### 4. National Park Service Certification

I, hereby, certify that this property is:

entered in the National Register  determined eligible for the National Register  
 determined not eligible for the National Register  removed from the National Register  
 other (explain): \_\_\_\_\_

*Joe Edson H. Beall* 5-1-13  
Signature of the Keeper Date of Action

**5. Classification**

**Ownership of Property**  
(Check as many boxes as apply)

<input type="checkbox"/>	private
<input checked="" type="checkbox"/>	public - Local
<input type="checkbox"/>	public - State
<input type="checkbox"/>	public - Federal

**Category of Property**  
(Check only one box)

<input checked="" type="checkbox"/>	building(s)
<input type="checkbox"/>	district
<input type="checkbox"/>	site
<input type="checkbox"/>	structure
<input type="checkbox"/>	object

**Number of Resources within Property**  
(Do not include previously listed resources in the count.)

Contributing	Noncontributing	
1		buildings
		district
		site
		structure
5	1	object
6	1	<b>Total</b>

**Name of related multiple property listing**  
(Enter "N/A" if property is not part of a multiple property listing)

N/A

**Number of contributing resources previously listed in the National Register**

0

**6. Function or Use**

**Historic Functions**  
(Enter categories from instructions)

Government: City Hall

Government: Correctional Facility

Government: Fire Station

Recreation & Culture: Monument/Marker

**Current Functions**  
(Enter categories from instructions)

Vacant/Not In Use

Recreation & Culture: Monument/Marker

**7. Description**

**Architectural Classification**  
(Enter categories from instructions)

LATE 19<sup>TH</sup> & 20<sup>TH</sup> CENTURY REVIVALS:

Mission/Spanish Colonial Revival

**Materials**  
(Enter categories from instructions)

foundation: Concrete

walls: Brick; Stone

roof: Clay Tile

other:

---

## Narrative Description

---

### Summary

The Dodge City Municipal Building was designed by Mann and Company, Architects and Engineers of Hutchinson, and constructed in 1929 by contractor J.N. Parham. Designed to house municipal offices, a police station, and a fire station, the building is centrally located adjacent and north of the Boot Hill Museum and occupies a corner lot at 501 West Spruce Street in Dodge City, Ford County, Kansas. The site contains one contributing building (built 1929-1930) characterized by irregular massing and a unique design incorporating both Mediterranean and Modern influences, five contributing objects, and one non-contributing object. The objects include three commemorative markers, a statue of a cowboy, and two Corinthian column lamp posts. The site is prominent and located near the crest of Boot Hill directly west of the original Boot Hill Museum and recreated cemetery, where the graves are populated by cowboys who "died with their boots on." Although it has long been associated with the museum and an imitation cemetery, the Dodge City Municipal Building is a unique and relatively refined departure from the tourist-oriented kitsch of the museum.

---

### Elaboration

#### Municipal Building - (1929-1930, contributing building, KHRI # 057-1370-00413)

##### *Exterior*

The building's form is loosely T-shaped and consists of an asymmetrical series of gables, cross gables and towers arranged in an irregular, almost experimental manner. A Spanish tile roof sits atop buff brick masonry cladding that is broken by varying sizes of industrial steel casement windows resting on narrow, rounded cast-stone sills. Over-scaled experimental quoins define prominent vertical edges and a decorative, dentilled cornice crowns most of the building. The Municipal Building's general lack of ornament, flush exterior wall planes and irregular fenestration achieves a modern streamlined effect contained only by Mediterranean flourishes and other small-scale classical influences. Unique in its transitional design incorporating both modern and classical influences, the Dodge City Municipal Building is truly a reflection of its era.

While there is no clearly defined primary façade, the primary entrance is located at the east façade and accessed from 4<sup>th</sup> Avenue, a wide, brick street, that dead-ends at the back side of the Boot Hill Museum. The majority of this short-side elevation is restrained with the exception of the entry. A simple concrete sidewalk and staircase rises towards this entrance and is flanked by small cast-iron Corinthian columns atop plinths of buff-brick and cast stone. Above the stairs, a wide concrete sidewalk passes by two monuments, the bell marker and the oxen-head trail monument. A Spanish Eclectic entryway that pays homage to regional influences contains a deeply recessed entry surround built of heavy, horizontal marbled limestone panels. A pronounced limestone casing frames the entry and is marked by ogee molding and a carved Spanish Colonial pattern with volutes above entryway. The Spanish theme is continued in the design of the paired wood doors. Each door is marked by undulating panel molds and quarreled glass over the top portion.

A cross-gabled roof characterizes this façade with the larger, two-bay, north side gable-end most prominent. A narrower side-gable of the same height extends southward and a lower, sloped wall projects again to the south. Over-sized, experimental quoins grace each end of the east façade. There are three casement window units with 8-light sash, two of them evenly spaced on the first story of the gable end, the other situated above the entry on the side-gable portion. Two shorter, boarded-over windows are located on the basement level. Prominent, double 12-light casement sash are centered within the second story of the gable end and open onto a walk-out steel balcony characterized by long, slender steel bars that flank the windows and rise above the unit in a spiraled, Art Nouveau pattern.

The long, north façade facing West Spruce Street is comprised of a series of connected blocks. These blocks are broken by function into two groups distinguished by municipal offices in the eastern portion and a fire station and tower within the westernmost space. The grade rises westward so that the east side of the building contains three stories, the west side, two. The easternmost block of the municipal portion is a side-gable, single-bay wing with roofline situated slightly below and subordinate to the prominent 3-bay, gable-end main administrative block to the east. This 3-bay block contains a tall, prominent, buff brick chimney centered at the west gable peak. Moving westward, the central block, though also 3-bays, is characterized by a lower roofline, experimental fenestration and a shed extension protruding northward from the west bay. This block appears as a transitional design marking the shift between administrative space and the fire station. A 3-story, single-bay tower is cut into the western portion of the shed extension of the transitional bay, its decorative façade faces east, perpendicular to the north facade. It is a distinctive feature characterized by a gable-end roof and a tall, arched window facing east. A smaller gabled tower wing extends from the southern face of the main tower block. The east facade

is slightly set back and the roofline approximately one-half story lower, obscuring the tower wing from north façade view. The westernmost block is a gable-front, 2-bay fire station dominated by garage openings.

Architectural details on the north façade are subtle. Fenestration is generally symmetrically spaced and consists of 8-light casement sash on first story. Similar casements on the top story are elongated and contain a fixed, horizontal, 8-light transom. Windows on ground level are boarded over. A thin, decorative dentilled cornice runs along the side gables below heavy steel guttering. The central transitional bay is marked by asymmetrical fenestration consisting of a pair of smaller casement windows on second story and on the first story, one very small opening, a pattern of nine small punched openings grouped together in square-pattern and an 8-light casement. The east façade of shed protrusion contains a recessed secondary entry smaller than but similar to the elaborately detailed main entry. Above this entry hangs a cast-stone buffalo head sculpture that was salvaged from Dodge City's original municipal building.<sup>1</sup> A single, 6-light casement window is centered above the buffalo's head.

The tower facade, perpendicular to the north façade has a dentilled decorative cornice and contains an arched window with an 8-light, double casement sash and a horizontally oriented, 8-light, fixed transom topped by a semi-elliptical sash. The tower wing contains a similar decorative pattern of small punched openings. The western block contains a garage space for fire trucks. This gable-front façade contains two, large bay openings infilled with non-historic materials and two symmetrical window openings with protruding cast-stone sills and non-historic infill. Oversized quoins are particularly noticeable on this block.

The long, 6-bay side-gable west façade is mostly obscured from view and contains few embellishments. The flush wall plane is framed by decorative, dentilled cornice and oversize quoins. There is a slight drop in the roof plane dividing the first four bays from the back two. Fenestration includes four, vertical first-story openings with double 8-light steel casement beneath a horizontal 4-light fixed transom. First-story windows rest on rounded, protruding cast-stone sills. Second-story fenestration includes seven openings, six of which are shortened versions of the first-story openings that likely contained 8-light sash without transom but are now boarded over or contain non-historic double hung sash. A smaller opening is situated adjacent to the southernmost opening. All upper-story windows rest on rounded, protruding cast-stone sills.

The south façade is a series of connected blocks similar to north façade, but with a utilitarian and somewhat neglected appearance. At the west end of the rear façade, the back side of the fire station occupies the south wing of the T-form. It is a gable-end, two bay façade with over-sized quoins along vertical edges. The east, side-gable façade of garage extension returns to main block and contains two window openings in the upper north bay. A two-story, four-bay, side-gable facade extends eastward and contains a decorative cornice. An additional rectangular, 4-bay block, slightly taller than the first, extends eastward and is partially obscured by a gabled ell with shed extension on west end. This ell is prominent and the side gable is also visible on the east facade.

Architectural details on the south facade are few. The majority of fenestration has either been boarded over or replaced with non-historic double-hung sash. The rear fire station gable has four openings including two original steel sash units, a boarded opening on upper east bay and a garage opening with non-historic door on lower east bay. All other openings are regularly spaced with the exception of the ell in which three openings are spaced randomly. The shed structure extending west off of ell is a three-sided west-facing shelter containing a rear entryway. It is also built of buff brick walls and Spanish Tile roof. Shallow concrete stairs lead to this entrance.

### *Interior*

Parts of the building's interior have been compromised over the years; however, the various historic uses remain legible, particularly within the fire station space. This space retains its industrial finishes of concrete floors, brick walls, and concrete-beamed ceilings. The overhead garage doors on the north and south elevations are modern replacements. Other parts of the building have been partitioned and subdivided with sheetrock walls and dropped ceilings. Where original finishes are exposed, as in stairwells, water infiltration has caused plaster damage. Stairwells reveal historic materials used, and off the stairwells, there are original round-arched openings providing access into the hallways.

### Corinthian Column Lamp Posts – (1930s, 2 contributing objects)

There are two cast-iron lamp posts flanking the sidewalk that leads to the main entrance on the east elevation. The small Corinthian columns are fluted and sit atop plinths of buff-brick and cast stone. Each of the columns originally was topped with a light globe, but these are currently missing.

<sup>1</sup> *Dodge City Daily Globe*, 9 October 1929.



Cowboy Statue - (1927-1929, contributing object, KHRI # 057-1385)

*Artist: Oscar H. Simpson, DDS; Al M. Bissing, DDS assisted in flasking model and pouring concrete*

*Model: Joseph Sughrue*

The Cowboy Statue is situated in the front lawn of the former Municipal Building - less than 100 feet from the building's northeast corner. The sculpture itself is made of concrete from mold of the likeness of Joseph Sughrue. It faces east and rests on a buff brick base. The sculpture is 84 inches tall, 25 inches wide, and 24 inches deep. The base is 10 inches in height, 25 inches wide, and 35 inches deep. The brick pedestal measures 52 inches in height, 39 inches wide, and 46 inches deep.<sup>2</sup>

There is a bronze plaque set within the east face of the brick base that reads: ON THE ASHES / OF MY CAMPFIRE / THIS CITY IS BUILT / MODELED BY O.H. SIMPSON, D.D.S. / PIONEER DENTIST / 1927

There is a small bronze plaque set within the concrete base directly beneath the feet of the statue that reads: THE MODEL FOR THIS STATUE WAS / JOE SUGHRUE / A COWBOY AND LATER DODGE CITY CHIEF OF POLICE / FROM 1933 TO 1936

Oxen-head Trail Monument (1932<sup>3</sup>, contributing object, KHRI # 057-1386)

*Artist: Oscar H. Simpson, DDS*

The Oxen Monument is situated in the front lawn of the former Municipal Building, just steps from the front (east) entrance on the south side of the sidewalk. The sculpture faces east and includes two oxen heads made of concrete mounted to a buff brick base that is topped by a concrete cap. The monument is 60 inches tall, 86 inches wide, and 63 inches deep.

The north face of the base includes a bronze plaque that reads: MY TRAILS / HAVE BECOME / YOUR HIGHWAYS / SEVEN MILLION HEAD / OF LONGHORNS / MARKETED FROM / DODGE CITY / 70'S - 80'S / LEST WE FORGET / MODELED BY / O.H. SIMPSON, D.D.S.

Bell Commemorative Marker (1939, contributing object, KHRI # 057-1387)

*Artist: Junior Chamber of Commerce / National Youth Administration work project*

The bell marker is situated in the front lawn of the former municipal building, just steps from the front (east) entrance on the north side of the sidewalk (between the Oxen monument to the south and the Cowboy Statue to the north). The monument faces east and includes a two-tier buff brick base with the bell at the top. Each tier is topped by a concrete cap. The base tier includes a water spigot on the north face, below which is a small reservoir for catching water. The top of the base tier includes a non-functioning fountain. There is a step centered in front of the base indicating this may have been a drinking fountain. The monument is 96 inches tall, 49 inches wide, and 61 inches deep.

There is a bronze plaque set within the east face of the brick base tier that reads: H.B. (HAM) BELL / DEPUTY U.S. MARSHAL, / PIONEER SHERIFF / MAYOR OF DODGE CITY / AND GRAND OLD MAN / OF THE SOUTHWEST / SINCE 1874 / THIS FOUNTAIN ERECTED BY / THE JUNIOR CHAMBER OF COMMERCE / 1939

There is a small bronze plaque set within the south face of the brick base that reads: A-D-1939 / NATIONAL YOUTH / ADMINISTRATION / WORK PROJECT

<sup>2</sup> Measurements taken 18 May 1994 by B. Richard Dryden, DDS. [KSHS, Cultural Resources Division, Save Outdoor Sculpture file.]

<sup>3</sup> This date is derived from Oscar H. Simpson's obituary. "Simpson, Dean of Southwest Dentists, Dead," *Dodge City Daily Globe*, 1 April 1935.

Centennial Monument (1972, non-contributing object, KHRI# 057-1388)

Artist: DeRos Hogue, architect<sup>4</sup>

This monument is located approximately 20 feet southeast of the Cowboy Statue. It consists of a square concrete pad (outlined with inlaid red bricks) with a monument in the middle surrounded by four free-standing buff brick and concrete pedestals at the corners. These corner pedestals each have a inlaid stone or metal plaque that faces toward the larger central monument, which is also made of buff. The larger monument has four buttressed corners and a tall central spire topped by a medallion that reads DODGE CITY, KANSAS / 1872 CENTENNIAL 1972.

The monument is 15 feet tall and 17 feet wide. The central structure is 7 feet wide with a brick base measuring 80 inches in height. The four smaller pedestals each measure 48 inches in width and 32 inches in height.

It is non-contributing because its date of construction does not fall within the period of significance.

---

<sup>4</sup> DeRos Hogue (born 27 October 1936) grew up in Dodge City and graduated from the University of Kansas in 1959. In 1970, he ran his own firm in Colorado Springs, Colorado. John F. Gane, ed., *American Architects Director*, 3<sup>rd</sup> Edition 1970 (New York: RR Bowker Company, 1970), 414.

**8. Statement of Significance**

**Applicable National Register Criteria**

(Mark "x" in one or more boxes for the criteria qualifying the property for National Register listing)

- A Property is associated with events that have made a significant contribution to the broad patterns of our history.
- B Property is associated with the lives of persons significant in our past.
- C Property embodies the distinctive characteristics of a type, period, or method of construction or represents the work of a master, or possesses high artistic values, or represents a significant and distinguishable entity whose components lack individual distinction.
- D Property has yielded, or is likely to yield, information important in prehistory or history.

**Criteria Considerations**

(Mark "x" in all the boxes that apply)

Property is:

- A Owned by a religious institution or used for religious purposes.
- B removed from its original location.
- C a birthplace or grave.
- D a cemetery.
- E a reconstructed building, object, or structure.
- F a commemorative property.
- G less than 50 years old or achieving significance within the past 50 years.

**Areas of Significance**

(Enter categories from instructions)

Politics/Government

Social History

Architecture

**Period of Significance**

1927-1963

**Significant Dates**

1929, 1930, 1932, 1939

**Significant Person**

(Complete only if Criterion B is marked above)

N/A

**Cultural Affiliation**

N/A

**Architect/Builder**

Mann & Company Architects (Municipal Building)

Parham, J. N., builder (Municipal Building)

Artist/Sculptor: Oscar H. Simpson

Artist/Architect: National Youth Administration

Artist/Architect: DeRos Hogue

**Period of Significance (justification)**

The period of significance begins in 1927 when the City of Dodge City acquired the property to construct a new municipal building and ends with 1963, the 50-year-cut-off date established by the National Park Service to provide sufficient passage of time to allow objective evaluation of the historic resource eligibility at the time of its listing.

**Criteria Considerations (justification)**

N/A

---

## Narrative Statement of Significance

---

### Summary

The Dodge City Municipal Building is nominated to the National Register of Historic Places under Criterion A for its local significance in the areas of politics/government and social history and Criterion C for its Spanish Colonial Revival-style architecture. Not only did this architecturally impressive building combine the various city offices and services (police, fire, water service, etc.) under one roof, but its development history is intertwined with efforts in the early-to-mid 20<sup>th</sup> century to save and promote Boot Hill. Included in this nomination are three historic commemorative markers that recognize the city's early history. The Dodge City Landmark Preservation Committee designated the property a local landmark in 1984.

---

### Elaboration

Dodge City prospered during the early decades of the 20<sup>th</sup> century, due in part to the growth and mechanization of the agricultural industry. Demand for grain was high during and immediately following World War I, but prices dipped during the early 1920s before again climbing in the mid- and late-1920s. Between 1915 and 1925, Dodge City's population increased 50 percent to 6,099 residents.<sup>5</sup> In addition to the Municipal Building, buildings under construction in the 1920s included the six-story First National Bank building, the Lora Locke Hotel, a hospital, a Presbyterian church, a grade school and Odd Fellows Hall, a brick apartment building, and 99 new homes.<sup>6</sup>

In the late 1920s, rumors swirled that Dodge City's notorious Boot Hill was slated for leveling. Although county coroner J. W. Straughn had moved the casualties of the city's early shootouts to the Prairie Grove Cemetery in 1879, Boot Hill still captivated locals and visitors alike. A number of dynamics - the deaths of many early pioneers, the re-introduction of cowboys like Will Rogers into American popular culture, and the new auto tourism business - converged to save and capitalize on Boot Hill.

The rumors were spurred when the Dodge City schools abandoned the Third Ward School, one of two schools that had occupied the site since 1880. If someone did not take action, a developer could level the site of the historic burial place of the city's rowdiest characters. In July 1925, the city council considered a resolution to purchase the property. The council passed Ordinance 614, which called for a special election to purchase Boot Hill. A local newspaper account, which suggests locals already saw this area as a tourist destination, provided both sides of the argument:

Many local people favor the purchase of the property by the city. They say the historical value of the ground is immeasurable. Boot Hill has a wider reputation the country over than any other spot in western Kansas. Hundreds of tourists coming through the country each year ask to be directed to Boot Hill. Those who favor the purchase regard Boot Hill as an asset which should be capitalized by the community. They believe for this reason the property should be kept in the ownership of the public. Another argument is that Boot Hill is the largest unimproved tract of ground that is close to the business district of the city. It is claimed that it is worth more to the public than to any individual. It is said that in future years the city is certain to face a need for just such a tract of ground for civic institutions and that if the purchase is delayed until the need comes the city will have to pay many times what the Boot Hill site would cost now.

On the other hand, there are those who disregard the claim that the tract has a historical value, and urge many other objections to the purchase. It is frequently said that the price now asked is a higher price than the public should be asked to pay. It is urged that the old school building on the property, from which everything of value has been removed and sold, is a liability and that the building would have to be removed at the cost of the purchaser. Many assert that the purchase by the public would be putting the city into the real estate business and that the property would have to be resold later because the public has no need for it now and no plans for its use in the future.<sup>7</sup>

---

<sup>5</sup> Christy Davis, "Dodge City Downtown Historic District" National Register of Historic Places nomination (Topeka: Kansas Historical Society, 2005), 81.

<sup>6</sup> *Ibid.*, 83.

<sup>7</sup> *Dodge City Globe*, 31 March 1927.

City fathers played a key role in saving the landmark, asserting the place's significance as a potential tourist attraction. In a joint letter to the editor, published just two days after the above-noted article, fourteen boosters urged voters' support, noting that "Boot Hill ... could be converted into one of the show places of the city ... the historical value of the tract should be capitalized."<sup>8</sup> The measure carried in early April 1927 and the city issued \$12,000 in bonds to buy the property.

The old city hall at the intersection of Trail Street and Second Avenue was demolished in 1927, and architectural plans for a new municipal building were produced by Mann & Company architects. The building was to have "Spanish architecture," with buff brick and a red tile roof, and house offices for the city clerk, waterworks department, city engineer, and police and fire departments.

Bids for the new municipal building were opened on May 23, 1929, and the City approximated the cost to erect the building at about \$50,000.<sup>9</sup> The bids came in well over budget, and the commissioners deferred the selection until the architect could revise the plans, which included the removal of the museum.

Dodge City contractor J. N. Parham was eventually hired to complete the new building. The building's cornerstone was set on November 4, 1929 during a celebration touted as "The Last Roundup," which brought together many of the area's early settlers. The event "honoring the pioneers" included an address by city commissioner W. C. Gould entitled "Then and Now," the official unveiling of the Cowboy Statue, and singing of cowboy songs.<sup>10</sup> The Cowboy Statue was designed by a local retired dentist Oscar H. Simpson and was unveiled by his teenage daughter Betty Simpson.<sup>11</sup> The building was completed and paid off by the end of 1930.<sup>12</sup>

As soon as the city bought Boot Hill, advocates from Dodge City and beyond began agitating for a museum there. A. B. McDonald, a feature writer for the *Kansas City Star* urged the city "to start a movement to establish some sort of museum into which all the relics of the early days might be brought and preserved."<sup>13</sup> In 1928, Dodge City hosted the State Republican Convention. On a lark, the hosts set up fake grave markers on Boot Hill. Although the phony cemetery would come to dominate the front lawn<sup>14</sup> of the new municipal building, the headstones were so popular that the Junior Chamber of Commerce left them there. Although early plans for the municipal building (built 1929-1930) included a museum addition, it was value-engineered out. For decades, pioneers Dr. Oscar H. Simpson and Heinie Schmidt settled for the headstones and plaster statues to commemorate the city's cowtown days.<sup>15</sup>

Dr. Simpson's obituary credits him with the idea of a hanging tree and reconstructing the old Boot Hill Cemetery by "making a few cement skulls and burying them there...and opposite the heads he permitted a boot toe or two to protrude from the ground."<sup>16</sup> He apparently suggested these ideas as a way to entertain guests in Dodge City for the Rotary Club's state convention in the early 1930s. The idea attracted considerable attention and a version of this cemetery has remained at Boot Hill ever since.

Dr. Simpson developed the technique of casting gold inlays and introduced it to the dentistry profession, and he used a version of this technique in developing his interest in concrete as a medium to express his artistic abilities and historical interests. In his retirement, he became known locally for his concrete art. According to his obituary, "his first work of that nature...[was] an elk's head which adorned the Elks home in Dodge City." He perfected his method of "moulding concrete" by "making stone frogs [and] using colored marbles for the jeweled eyes of the frogs."<sup>17</sup> For his work on the Cowboy Statue, he picked local police officer Joseph Sughrue as the model because he most reminded Simpson of a typical late nineteenth century cowboy. With assistance from fellow dentist Al M. Bissing and an unidentified postal employee, Simpson used plaster of paris to create a mold of Sughrue, who "was encased between two flasks (mold) halves. During

<sup>8</sup> *Dodge City Globe*, 2 April 1927.

<sup>9</sup> *Dodge City Globe*, 13 May 1929.

<sup>10</sup> Unknown Author, "The Last Round-Up: Pictorial Souvenir of the Laying of the Cornerstone of the New City Building on Historically Famous Boot Hill," (Dodge City, KS: Etrick Printers, 1929). [KSHS, Cultural Resources Division, Save Outdoor Sculpture file.]

<sup>11</sup> Ancestry.com. 1930 *United States Federal Census* [database on-line]. Provo, UT, USA: Ancestry.com Operations Inc., 2002.

<sup>12</sup> *Dodge City Globe*, 24 December 1931.

<sup>13</sup> *Ibid.*, 13 November 1928.

<sup>14</sup> Historic images suggest this early recreated cemetery was near the southeast corner of the Municipal Building.

<sup>15</sup> Resolution 153.

<sup>16</sup> *Dodge City Globe*, 1 April 1935.

<sup>17</sup> *Dodge City Globe*, 1 April 1935.

the pouring and setting of the top (anterior portion of Sughrue's body) flask half, rubber hoses to the model's nose and vented to the outside enabled the human model to breathe for 45 minutes. Upon removing Sughrue from the completed mold, concrete was poured and reinforced in four sections: lower legs, upper legs, torso, and head and shoulders. The cowboy hat, revolver and spurs were melded to the concrete body last."<sup>18</sup> Three years later (1932), Simpson completed another concrete monument that was placed on the lawn of the Municipal Building – the Oxen-head Trail Monument. The marker commemorates the freighters and cattlemen of the nineteenth century who passed through this area on the overland trails. In addition to the Cowboy Statue and the Oxen-head Trail Monument, Simpson created a "concrete bear that stood in the front yard of his home at 802 1<sup>st</sup> Avenue."<sup>19</sup>

By the time the new municipal building was completed in 1930, the stock market had crashed – and, some feared, Boot Hill was destined for the same fate. The city fathers assuaged their actions by touting the project's work-relief prospects. On January 31, 1931, a front-page newspaper headline read, "More than 100 Men Get Jobs on Boot Hill." The small print noted that the men would use shovels to level Boot Hill "to the height of the retaining wall around it" for 30 cents per hour and 20 cents per load.<sup>20</sup> When boosters were not convinced of the project's merit, city commissioners hedged that it "believ[ed] the slope and terrace, when it [was] landscaped [would] be a sightly background for whatever historical setting is used on the hill..."<sup>21</sup>

Meanwhile, ideas for proposed "historical settings" came pouring in. Among them was a plan to take the newly flattened landscape and create a three-dimensional replica "western landscape," a "Historic Shrine" that would look more like a southwest plateau than anything found in Dodge City.<sup>22</sup> The agitators were further emboldened when an estimated 200 gawkers and tourists visited the historic Boot Hill on one September Sunday in 1935.<sup>23</sup> By this time, the visitors likely included not only auto tourists, but also some of the throngs of citizens fleeing the Plains for greener pastures in California.

The hemorrhage was stemmed in part by New Deal programs, like the Museum Extension Service, which announced plans in 1937 to employ 60 area citizens. The museum service likely spurred efforts among area volunteers to start a Boot Hill museum. But perhaps the driving force was the 1939 World Premiere of the movie "Dodge City," which firmly placed the town within the popular culture lexicon. In November 1940, the Junior Chamber of Commerce was successful in convincing the city commission to issue bonds to construct a museum on Boot Hill.<sup>24</sup>

As plans were moving forward with a potential museum, another smaller New Deal project was underway at the municipal building – the construction of a commemorative marker by the Junior Chamber of Commerce with funding from the National Youth Administration. The marker includes a bell set within a brick base that has a water fountain. Completed in 1939, the marker commemorates Hamilton (Ham) Butler Bell, who served as a deputy U.S. marshal and an early sheriff and mayor of Dodge City.

In 1947, the city finally granted the Junior Chamber of Commerce permission to "construct and operate a historical structure and concession on boot hill."<sup>25</sup> Merritt Beeson, son of pioneer and Cowboy Band leader Chalk Beeson, broke the sod for the new building, which was sited west of the 1930 Municipal Building.<sup>26</sup> It had a simple glazed-tile design built to house the Beeson collection of artifacts. Over time, the building took on a more stereotypical outpost appearance with the addition of logs. In 1957, the city announced plans to construct a replica of Dodge City's original Front Street, and it opened to the public with great fanfare in July 1958, just in time for the height of the tourist season.<sup>27</sup>

---

<sup>18</sup> B. Richard Dryden, DDS. "Save Outdoor Sculpture! SOS! Survey Questionnaire," (Compiled 18 May 1994), 6. [KSHS, Cultural Resources Division, Save Outdoor Sculpture file.]

<sup>19</sup> "Dodge City Pioneer Series," In *Front Street Times: Newsletter of Dodge City's Boot Hill Museum* Vol. 2, No. 7 (March 1984): 1. [KSHS, Cultural Resources Division, Save Outdoor Sculpture file.] This bear is in the collections of the Boot Hill Museum.

<sup>20</sup> *Dodge City Globe*, 31 January 1931.

<sup>21</sup> *Ibid.*, 3 March 1932.

<sup>22</sup> *Ibid.*, 10 November 1931.

<sup>23</sup> *Ibid.*, 25 September 1935.

<sup>24</sup> Dodge City Commission Minutes, 29 November 1940.

<sup>25</sup> Resolution 406, 26 March 1947.

<sup>26</sup> Frederick Young, *Dodge City: Up Through a Century in Story and Pictures* (Dodge City, KS: Boot Hill Museum, 1972), 190.

<sup>27</sup> *New York Times*, 19 October 1958.



In 1960, just two years after the Front Street replica opened, plans for an expansion were begun. As the Boot Hill Museum expanded, the city offices were moved in 1965 out of the municipal building to a new location. The fire department and Chamber of Commerce continued to operate there. The City began planning a new fire station in the 1970s, but it was not built and dedicated until 1990.<sup>28</sup> The municipal building housed the offices of the Chamber of Commerce and The Development Corporation until January 2001. Since then, it has been used for storage and by the fire department for training purposes.

#### Mann and Company, Architects and Engineers of Hutchinson

Arthur Mann was born in England in 1877 and, as a small boy, moved with his parents to Hutchinson. He earned a degree in engineering from the University of Kansas in 1906 and later established his architectural and engineering firm in 1924. His son Robert E. Mann joined the firm after graduating from the University of Kansas School of Architecture in 1932. During the early 20<sup>th</sup> century, the firm was perhaps best known for its designs of public school buildings, and by mid-century, the firm had designed over 200 schools.<sup>29</sup> The firm also is credited with the design of numerous institutional and civic buildings throughout Kansas and the region. In Dodge City, Mann and Company designed several extant buildings including the Municipal Building (built 1929), Southwest Protestant Hospital (built late 1920s), Hoover Pavilion at Wright Park (circa 1920s), and Roosevelt Grade School (built 1951).

#### Spanish Colonial Revival Architecture

Spanish Colonial Revival architecture is found in residential, commercial, religious, and institutional buildings of the early 20<sup>th</sup> century in Kansas. It is characterized by low-pitched red-tile roofs, carved or cast ornament, railings and balconies with functional and decorative iron-work. Arches are found in examples of this style, but not as commonly on the similar Mission style. Buildings of this style typically have irregular forms, and exterior cladding is typically brick, stucco, or stone. The style grew in popularity, particularly in the American southwest, after the 1915 world's fair in San Francisco where it was prominently featured.<sup>30</sup>

An early example of the Spanish Colonial Revival style in Dodge City was executed on a religious building – the Sacred Heart Cathedral, built in 1916 (NRHP, 1983). Local government buildings of the period were most often designed with Classical references, but the designers of the Dodge City Municipal Building elected to employ the regionally popular Spanish Colonial Revival style. As evidenced by news articles of the period, the townspeople were well aware of their town's history and the use of this style may have played into their attitudes toward the area's early Santa Fe Trail history and its association with the American southwest.

The Municipal Building's form is loosely T-shaped and consists of an asymmetrical series of gables, cross gables and towers arranged in an irregular, almost experimental manner. A Spanish tile roof sits atop buff brick masonry cladding that is broken by varying sizes of industrial steel casement windows resting on narrow, rounded cast-stone sills. Over-scaled experimental quoins define prominent vertical edges and a decorative dentilled cornice crowns most of the building. The building's general lack of ornament, flush exterior wall planes and irregular fenestration achieves a modern streamlined effect contained only by Mediterranean flourishes and other small-scale classical influences. Unique in its transitional design incorporating both modern and Spanish influences, the Dodge City Municipal Building is truly a reflection of its era.

---

<sup>28</sup> "Old Municipal Building," Dodge City Historic Landmark Designation Form, 1984. On file with City of Dodge City.

<sup>29</sup> Brenda Spencer, *Historic Public Schools of Kansas* National Register Multiple Property Documentation Form (Topeka, KS: Kansas Historical Society, 2004), E-26.

<sup>30</sup> Marcus Whiffen, *American Architecture Since 1780: A Guide to the Styles – Revised Edition* (Cambridge, MA: The MIT Press, 1992), 225-228.

---

## 9. Major Bibliographical References

---

- Ancestry.com. *1930 United States Federal Census* [database on-line]. Provo, UT, USA: Ancestry.com Operations Inc., 2002.
- Blackmar, Frank., ed. *Kansas: A Cyclopedia of State History*. Chicago: Standard Pub. Co., 1912.
- "Boot Hill." *Time Magazine*, 11 November 1929 (volume 14, number 20), page 66.
- Braddock, Betty & Jeanie Covalt. *Dodge City: Cowboy Capital, Beautiful Bibulous Babylon, Queen of the Cowtowns, Wicked Little City, the Delectable Burg*. Dodge City, KS: Kansas Heritage Center, 1982.
- Carey, Henry L. *The Thrilling Story of Famous Boot Hill & Modern Dodge City*. Dodge City, KS: Herbert Etrick Printers, 1937.
- City of Dodge City Files.
- Cutler, William. *History of the State of Kansas*. Chicago: A. T. Andreas, 1883.
- Davis, Christy. "Dodge City Downtown Historic District" National Register of Historic Places nomination. Topeka: Kansas Historical Society, 2005.
- Dodge City Globe*.
- Dodge City Journal*.
- "Dodge City Pioneer Series." In *Front Street Times: Newsletter of Dodge City's Boot Hill Museum* Vol. 2, No. 7. March 1984. [KSHS, Cultural Resources Division, Save Outdoor Sculpture file.]
- Dodge City Times*.
- Dryden, B. Richard. "Save Outdoor Sculpture! SOS! Survey Questionnaire." Compiled 18 May 1994. [KSHS, Cultural Resources Division, Save Outdoor Sculpture file.]
- Gane, John F., ed. *American Architects Director, 3<sup>d</sup> Edition 1970*. New York: RR Bowker Company, 1970.
- Haywood, C. Robert. *Victorian West: Class and Culture in Kansas Cattle Towns*. Lawrence: University of Kansas Press, 1991.
- High Plains Journal*.
- Kansas Heritage Center, Clippings.
- Miner, Craig. *West of Wichita: Settling the High Plains of Kansas, 1865-1890*. Lawrence: University of Press of Kansas, 1986.
- New York Times*.
- "Old Municipal Building." Dodge City Historic Landmark Designation Form, 1984. On file with City of Dodge City.
- Rath, Ida Ellen. *Early Ford County*. North Newton, KS: Mennonite Press, 1964.
- Sanborn Fire Insurance Maps.
- Spencer, Brenda. *Historic Public Schools of Kansas* National Register Multiple Property Documentation Form. Topeka, KS: Kansas Historical Society, 2004.

Dodge City Municipal Building  
Name of Property

Ford County, KS  
County and State

Unknown Author. "The Last Round-Up: Pictorial Souvenir of the Laying of the Cornerstone of the New City Building on Historically Famous Boot Hill." Dodge City, KS: Etrick Printers, 1929.

Wenzl, Timothy. *Dodge City Landmarks*. Spearville, KS: Spearville News Inc., 1986.

Whiffen, Marcus. *American Architecture Since 1780: A Guide to the Styles – Revised Edition*. Cambridge, MA: The MIT Press, 1992.

Young, Frederick. *Dodge City: Up Through a Century in Story and Pictures*. Dodge City, KS: Boot Hill Museum, 1972.

**Previous documentation on file (NPS):**

preliminary determination of individual listing (36 CFR 67 has been Requested)  
 previously listed in the National Register  
 previously determined eligible by the National Register  
 designated a National Historic Landmark  
 recorded by Historic American Buildings Survey # \_\_\_\_\_  
 recorded by Historic American Engineering Record # \_\_\_\_\_

**Primary location of additional data:**

State Historic Preservation Office  
 Other State agency  
 Federal agency  
 Local government  
 University  
 Other  
Name of repository: **Kansas Historical Society**

Historic Resources Survey Number (if assigned):   N/A  

**10. Geographical Data**

**Acreage of Property**   2.8 Acres    
(Do not include previously listed resource acreage)

**UTM References / Latitude-Longitude Coordinates (See figures 3 & 4)**  
(Place additional UTM references on a continuation sheet)

1	<u>          </u>	<u>          </u>	<u>          </u>	3	<u>          </u>	<u>          </u>	<u>          </u>
	Zone	Easting	Northing		Zone	Easting	Northing
2	<u>          </u>	<u>          </u>	<u>          </u>	4	<u>          </u>	<u>          </u>	<u>          </u>
	Zone	Easting	Northing		Zone	Easting	Northing

**Verbal Boundary Description** (describe the boundaries of the property)  
The nominated property includes the Municipal Building, statuary, and associated land described as follows: Lots 65, 67, 69, 71, 73 & 75, Block 20, in the Original Town of Dodge City (supp.) in SECTION 26 TOWNSHIP 26 RANGE 25.

**Boundary Justification** (explain why the boundaries were selected)  
The nominated property includes the land currently and historically associated with the municipal building.

**11. Form Prepared By**

name/title   Sarah Martin & Matthew Holtkamp & Christy Davis    
organization   Kansas Historical Society   date   November 2012    
street & number   6425 SW 6<sup>th</sup> Avenue   telephone                                     
city or town   Topeka   state   KS   zip code   66615    
e-mail

---

**Additional Documentation**

---

Submit the following items with the completed form:

- **Maps:** A **USGS map** (7.5 or 15 minute series) indicating the property's location.

A **Sketch map** for historic districts and properties having large acreage or numerous resources. Key all photographs to this map.

- **Continuation Sheets**
- **Additional items:** (Historic images, maps, etc.)

---

**Photographs:**

---

Name of Property: Dodge City Municipal Building  
City or Vicinity: Dodge City  
County/State: Ford County, Kansas  
Photographer: Patrick Zollner  
Date of Photos: July 7, 2012

Description of Photograph(s) and number:

- 1 of 18 East and north elevations, facing SW
- 2 of 18 North elevation with W Spruce Street in foreground, facing S
- 3 of 18 Firehouse tower, facing SW
- 4 of 18 Fire station garage bays on north elevation and part of the west (side) elevation, facing SE
- 5 of 18 South elevation and parking area in foreground, facing N
- 6 of 18 South and east elevations with driveway in foreground, facing NW
- 7 of 18 East elevation with light posts, oxen monument and bell monument flanking sidewalk, facing W
- 8 of 18 Double-door entrance on east elevation, facing W
- 9 of 18 Buffalo head above east-facing entrance to police station on north side of building, facing W
- 10 of 18 Close-up of second-story window and railing on east elevation, facing W
- 11 of 18 Interior, stairwell showing original plaster walls and arched entry into hallway
- 12 of 18 Interior, second floor office space that has been partitioned and subdivided
- 13 of 18 Interior, fire station garage
- 14 of 18 Interior, fire station tower
- 15 of 18 Cowboy Statue, camera facing W
- 16 of 18 Oxen-head Trail Monument, camera facing SW
- 17 of 18 Bell Monument with municipal building in background, camera facing W
- 18 of 18 Non-contributing centennial monument with Cowboy Statue in background, camera facing N

---

**Property Owner:**

(complete this item at the request of the SHPO or FPO)

name City of Dodge City (Attention: Ken Strobel, City Manager)  
street & number PO Box 880 telephone \_\_\_\_\_  
city or town Dodge City state KS zip code 67801-0880

**Paperwork Reduction Act Statement:** This information is being collected for applications to the National Register of Historic Places to nominate properties for listing or determine eligibility for listing, to list properties, and to amend existing listings. Response to this request is required to obtain a benefit in accordance with the National Historic Preservation Act, as amended (16 U.S.C.460 et seq.).

**Estimated Burden Statement:** Public reporting burden for this form is estimated to average 18 hours per response including time for reviewing instructions, gathering and maintaining data, and completing and reviewing the form. Direct comments regarding this burden estimate or any aspect of this form to the Office of Planning and Performance Management, U.S. Dept. of the Interior, 1849 C. Street, NW, Washington, DC.

Figure 1: Sanborn Fire Insurance Map 1932. Sheet 2.

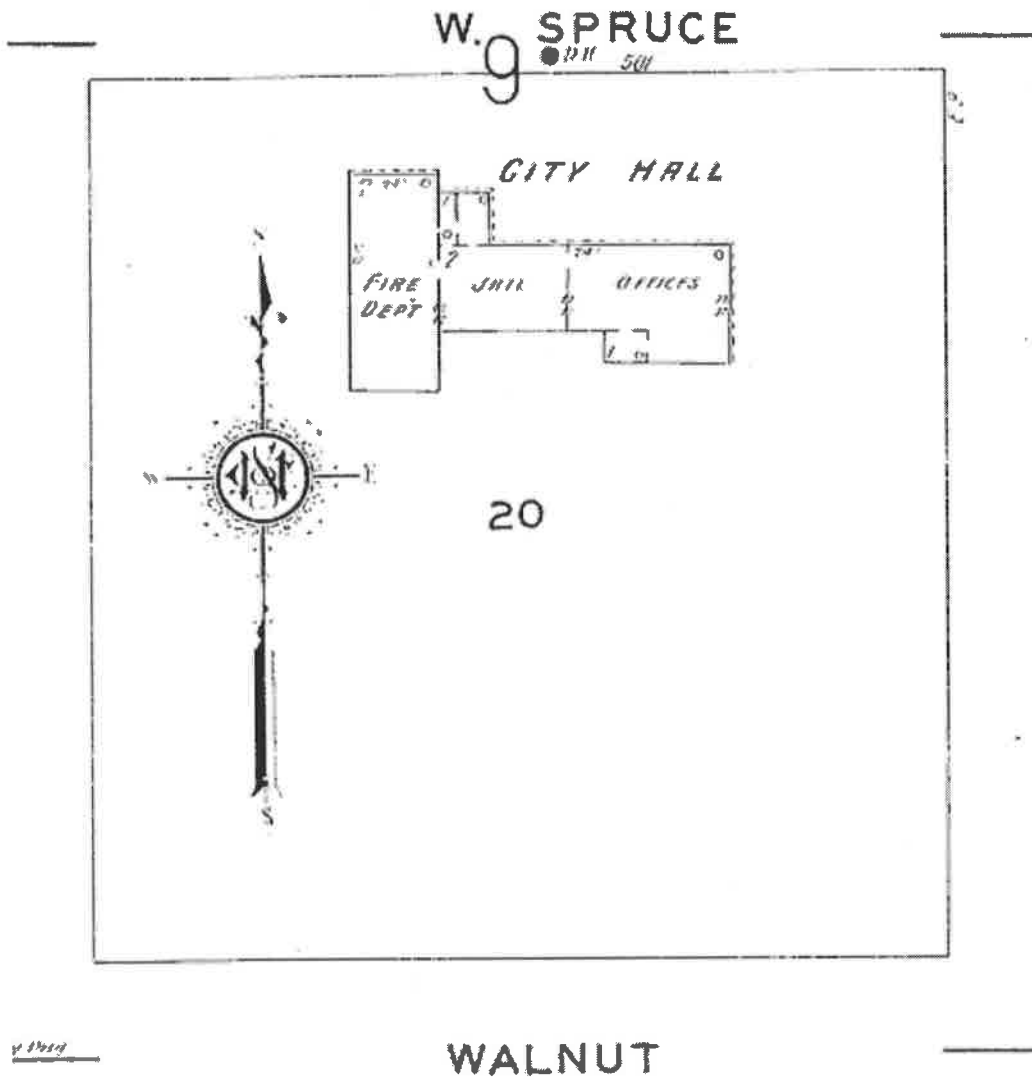


Figure 2: Sanborn Fire Insurance Map 1932, updated August 1950. Sheet 2.

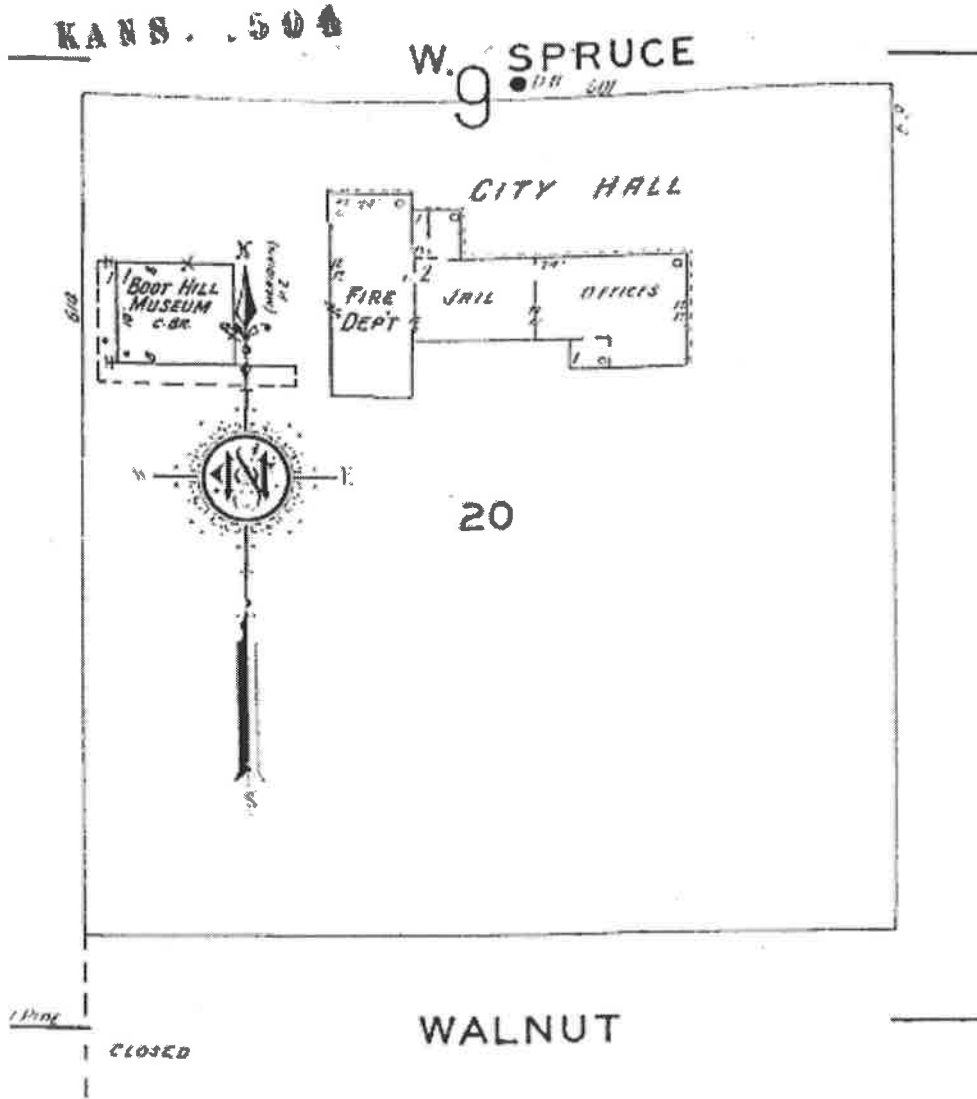
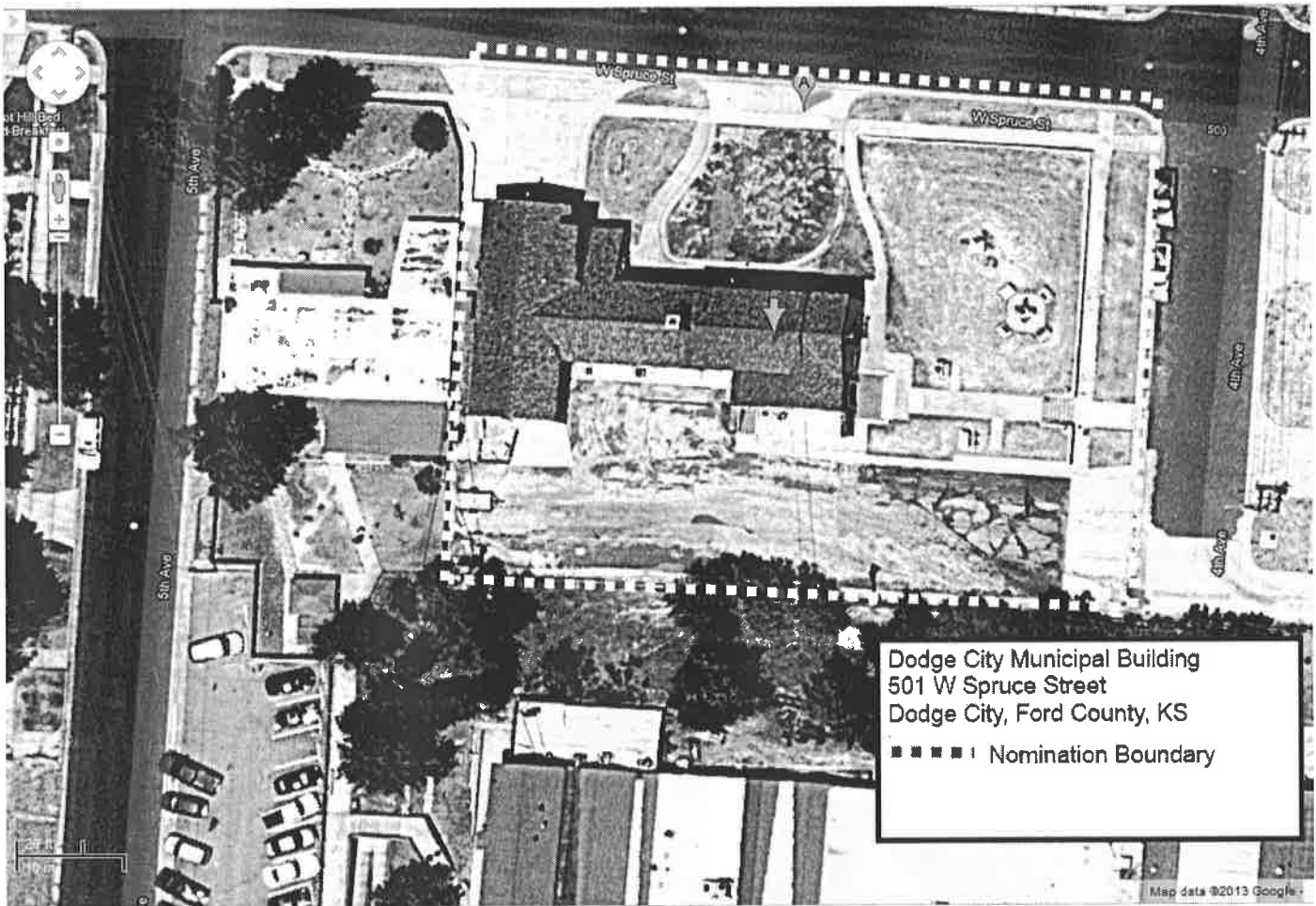




Figure 3: Aerial Image with NR boundary noted. Google, 2013.



Latitude / Longitude: 37.75434 -100.02182  
Datum: WGS84

Figure 4: Contextual Map. Google, 2013.











NO PARKING ANY TIME





906

NO PARKING  
IN DRIVEWAY  
ANY TIME





NO PARKING  
IN DRIVEWAY  
ANY TIME

















OFFICE HOURS  
MON - FRI  
9 to 5

BOOT  
SECO  
MUN





OF THE  
ROLEX





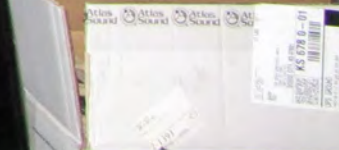




















THE CITY OF DENVER  
BY THE CITY OF DENVER  
IN THE CITY OF DENVER  
IN THE CITY OF DENVER

ON THE ASHES  
OF MY CAMPFIRE  
THIS CITY IS BUILT  
MODELED BY O. P. SIMPSON, D.D.S.  
PIONEER DENTIST  
1927





AT THE  
COURT  
HOUSE  
IN  
1856  
BY  
THE  
LEGISLATURE  
OF  
THE  
STATE  
OF  
TEXAS





H. B. CHAM BELL  
DEPUTY U.S. MARSHAL,  
PIONEER SHERIFF,  
MAYOR OF DODGE CITY  
AND GRAND OLD MAN  
OF THE SOUTHWEST  
SINCE 1874  
— THE FOUNTAIN ERECTED BY  
THE UNDERTAKERS OF COMMERCE  
1939









UNITED STATES DEPARTMENT OF THE INTERIOR  
NATIONAL PARK SERVICE

NATIONAL REGISTER OF HISTORIC PLACES  
EVALUATION/RETURN SHEET

REQUESTED ACTION: NOMINATION

PROPERTY Dodge City Municipal Building  
NAME:

MULTIPLE  
NAME:

STATE & COUNTY: KANSAS, Ford

DATE RECEIVED: 3/15/13 DATE OF PENDING LIST: 4/10/13  
DATE OF 16TH DAY: 4/25/13 DATE OF 45TH DAY: 5/01/13  
DATE OF WEEKLY LIST:

REFERENCE NUMBER: 13000217

REASONS FOR REVIEW:

APPEAL: N DATA PROBLEM: N LANDSCAPE: N LESS THAN 50 YEARS: N  
OTHER: N PDIL: N PERIOD: N PROGRAM UNAPPROVED: N  
REQUEST: N SAMPLE: N SLR DRAFT: N NATIONAL: N

COMMENT WAIVER: N

ACCEPT  RETURN  REJECT 5.1.13 DATE

ABSTRACT/SUMMARY COMMENTS:

**Entered in  
The National Register  
of  
Historic Places**

RECOM./CRITERIA \_\_\_\_\_

REVIEWER \_\_\_\_\_

DISCIPLINE \_\_\_\_\_

TELEPHONE \_\_\_\_\_

DATE \_\_\_\_\_

DOCUMENTATION see attached comments Y/N see attached SLR Y/N

If a nomination is returned to the nominating authority, the nomination is no longer under consideration by the NPS.

6425 SW 6<sup>th</sup> Avenue  
Topeka, KS 66615



phone: 785-272-8681  
fax: 785-272-8682  
cultural\_resources@kshs.org

Kansas Historical Society

Sam Brownback, Governor  
Jennie Chinn, Executive Director



March 8, 2013

Carol Shull  
National Register of Historic Places  
National Park Service  
1201 Eye Street, N. W.  
8<sup>th</sup> Floor (MS 2280)  
Washington, DC 20005

Dear Ms. Shull:

We are pleased to submit for your consideration the following National Register documents:

- Commodore Apartment Hotel – Wichita, Sedgwick County, KS (new submission)
- Fourth National Bank Building – Wichita, Sedgwick County, KS (new submission)
- Westside IOOF Lodge – Wichita, Sedgwick County, KS (new submission)
- Woolf Brothers Clothing Co. Bldg. – Wichita, Sedgwick County, KS (new submission)
- Wayland, John F., House – Washington, Washington County, KS (new submission)
- Boot Hill Museum – Dodge City, Ford County, KS (new submission)
- Dodge City Municipal Building – Dodge City, Ford County, KS (new submission)

Please do not hesitate to contact me if you have any questions. I may be reached at 785-272-8681 ext. 216 or smartin@kshs.org.

Sincerely yours,

Sarah J. Martin  
National Register Coordinator

Enclosures