



1085

Mille Lacs County Courthouse
Milaca, Minnesota
Charles W. Nelson
1976

DEC 6 1976

Minnesota Historical Society, 690
Cedar Street, St. Paul, Minn.
Perspective view from Northwest
17/01661

DOE MAR 25 1977

FROM THE COLLECTIONS OF THE
MINNESOTA HISTORICAL SOCIETY
THIS PHOTOGRAPH IS FOR REFERENCE USE
ONLY. IT MAY NOT BE REPRODUCED OR
SOLD WITHOUT WRITTEN PERMISSION.



MILLE LACS
COUNTY

COURT HOUSE
ERECTED 1923



2005

Mille Lacs County Courthouse
Milaca, Minnesota
Charles W. Nelson
1976

DEC 6 1976

Minnesota Historical Society, 690
Cedar Street, St. Paul, Minn.

Detail of principal (north) entry
18/01661

DOE MAR 25 1977

FROM THE COLLECTIONS OF THE
MINNESOTA HISTORICAL SOCIETY
THIS PHOTOGRAPH IS FOR REFERENCE USE
ONLY. IT MAY NOT BE REPRODUCED OR
SOLD WITHOUT WRITTEN PERMISSION.



REGISTER OF DEEDS

CLERK OF COURT



3 of 5

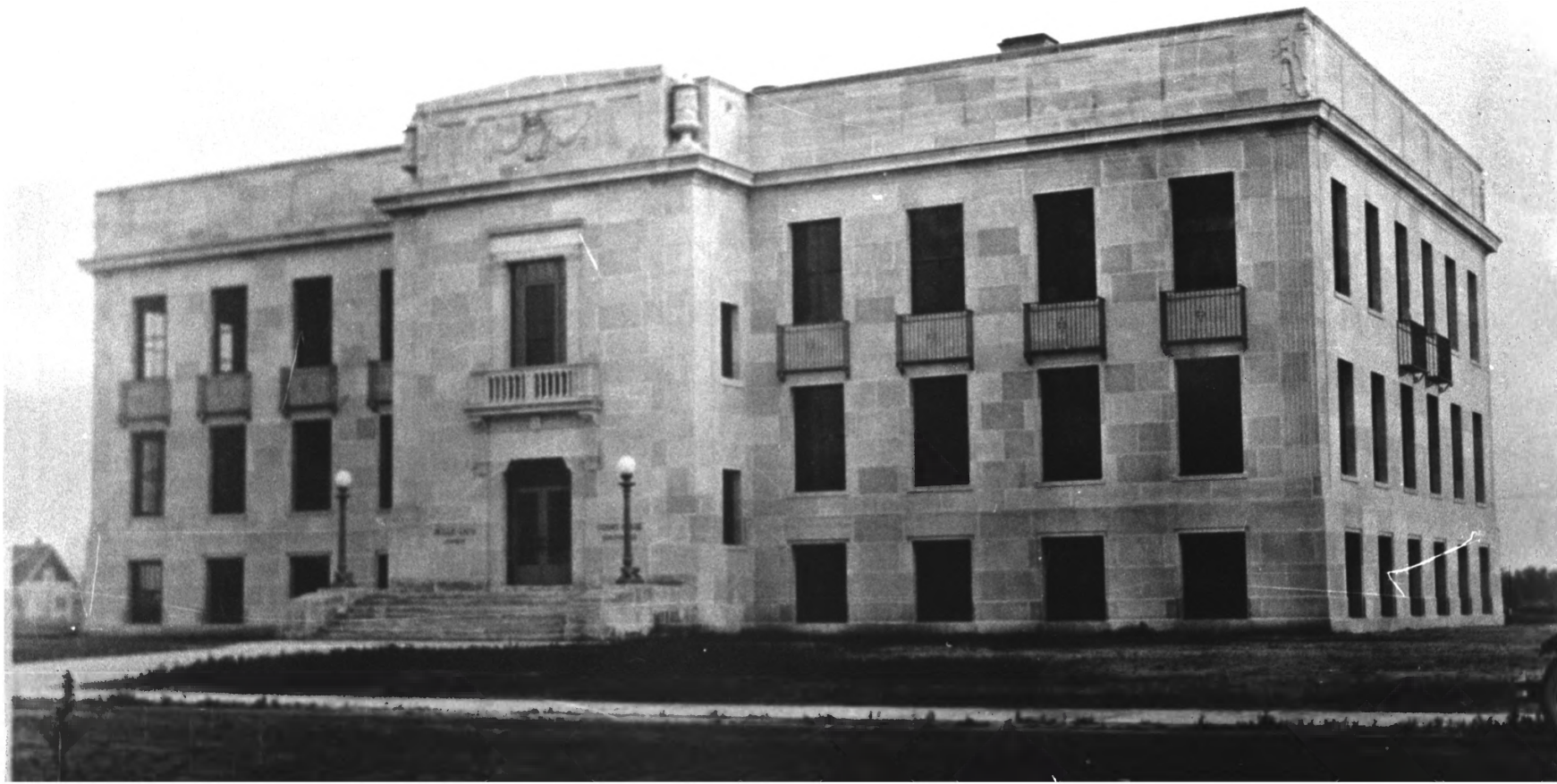
Mille Lacs County Courthouse
Milaca, Minnesota
Charles W. Nelson
1976

DEC 6 1976

Minnesota Historical Society, 690
Cedar Street, St. Paul, Minn.
Interior; east balcony
3A/01656

05 MAR 25 1977

FROM THE COLLECTIONS OF THE
MINNESOTA HISTORICAL SOCIETY
THIS PHOTOGRAPH IS FOR REFERENCE USE
ONLY. IT MAY NOT BE REPRODUCED OR
SOLD WITHOUT WRITTEN PERMISSION.



408 5

Mille Lacs County Courthouse

Milaca, Minnesota

Charles W. Nelson

Copy of Photo ca.1925

DEC 6 1976

Minnesota Historical Society, 690

Cedar Street, St. Paul, Minn.

Perspective view from Northwest

21/01661

06E MAR 25 1977

FROM THE COLLECTIONS OF THE
MINNESOTA HISTORICAL SOCIETY
THIS PICTURE IS FOR REFERENCE USE
ONLY. IT SHOULD NOT BE REPRODUCED OR
SOLD WITHOUT WRITTEN PERMISSION.



585

Mille Lacs County Courthouse

Milaca, Minnesota

Charles W. Nelson

1976

DEC 6 1976

Minnesota Historical Society, 690

Cedar Street, St. Paul, Minn.

Perspective view from Southeast

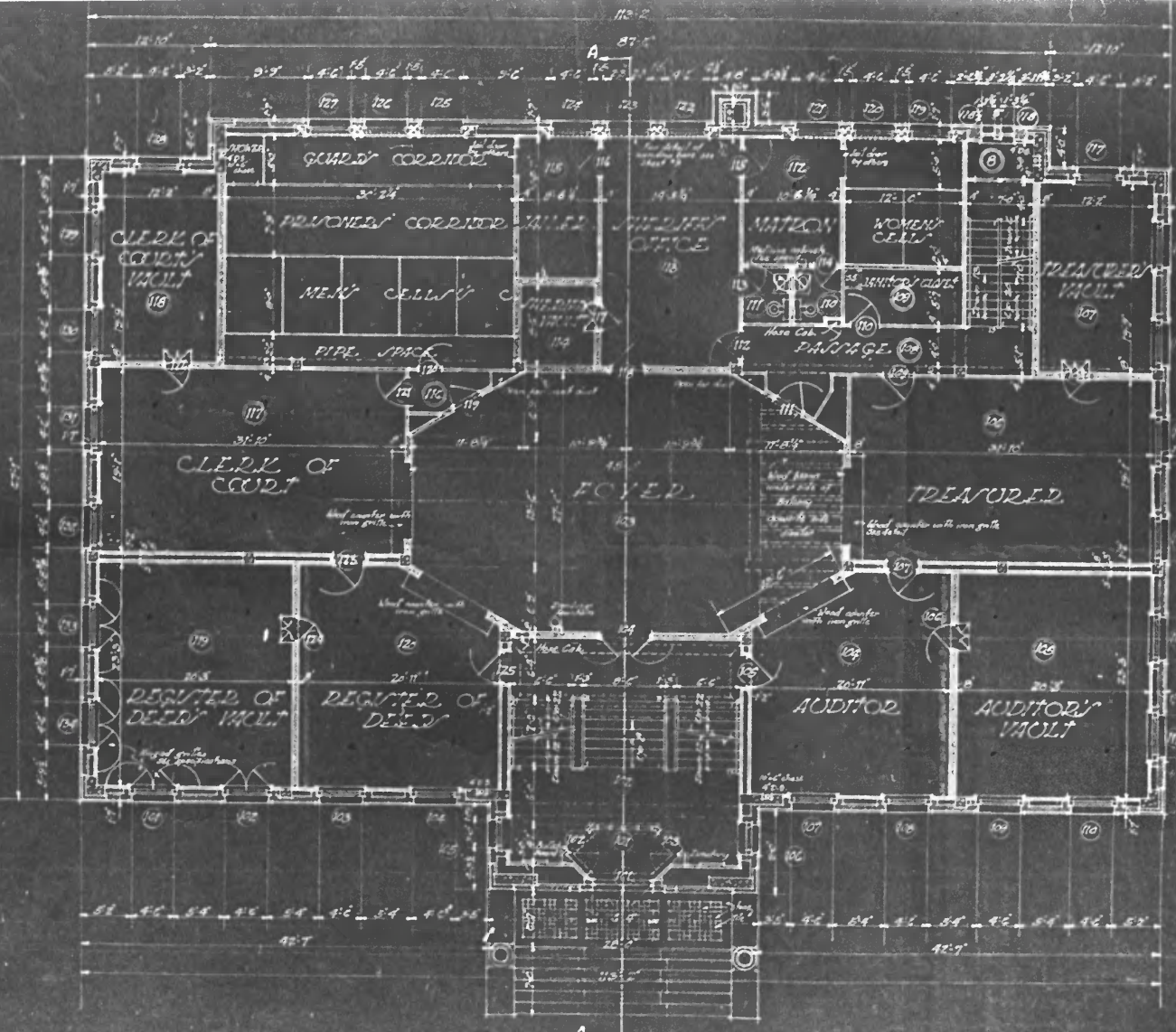
5A/01656

108E MAR 25 1977

FROM THE COLLECTIONS OF THE
MINNESOTA HISTORICAL SOCIETY
THIS PHOTOGRAPH IS FOR REFERENCE USE
ONLY. IT MAY NOT BE REPRODUCED OR
SOLD WITHOUT WRITTEN PERMISSION.

SCHEDULE-1ST FLOOR

BASE	FLOOR	TRIM	REMARKS
Marble	Terrazzo Marble Border	Oak	See detail on Sheet No. 10
Marble	Terrazzo Marble border	Oak	See section on Sheet No. 7
Wood	Rubbarstone	Oak	Return Mould
Colored Cement	Colored Cement	Oak	Wood Nain. Cap
Tile	Tile	Oak	9'-0" forred ceiling
Colored Cement	Colored Cement	Oak	Joist fixtures not in this Contract
Cement	Cement	None	
Wood	Rubbarstone	Oak	



FIRST FLOOR PLAN
Scale: 1/8"=1'-0"

DATE 1/27
1009 23
APPROVED
E.C.C.
ELEV.

1st 2 floor plans

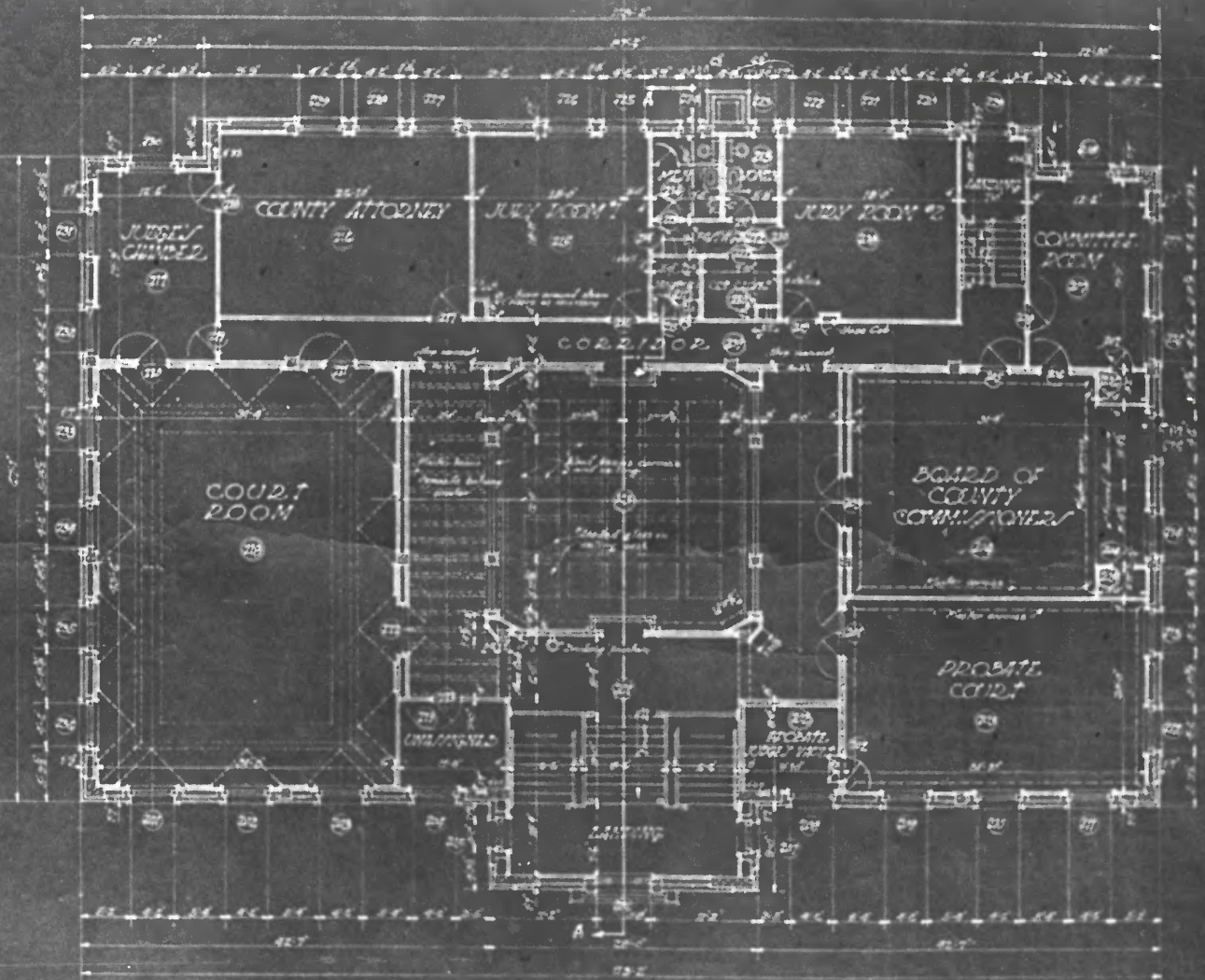
Mille Lacs County Courthouse
Milaca, Minnesota
Charles W. Nelson
1976

DEC 6 1976

Minnesota Historical Society, 690
Cedar Street, St. Paul, Minn.
Photo-copy of architect's drawing;
first floor plan

2A/01656 00E MAR 25 1977

FROM THE COLLECTIONS OF THE
MINNESOTA HISTORICAL SOCIETY
THIS PHOTOGRAPH IS FOR REFERENCE USE
ONLY. IT MAY NOT BE REPRODUCED OR
SOLD WITHOUT WRITTEN PERMISSION.



2ND FLOOR

NO.	TRIM	REMARKS
1	Oak	Furred Plac. Ceiling & Cornice
2	Oak	
3	Oak	Picture Mould
4	Oak	9'0" furred ceiling
5	Oak	Wood Hairs Cap
6	Pine	9'6" furred ceiling
7	Oak	9'6" furred ceiling
8	Oak	Wood Chair Rail Furred Plac. Ceiling Cornice, Picture Cap
9	Pine	
10	Oak	9'6" furred ceiling

SECOND FLOOR PLAN
Scale: 1/8" = 1'-0"

DATE: 1/27/22	MILLE L. MILACA
DATE: 2/2/22	
ATTORNEY: E. J. ...	SECOND FLOOR
SCALE: 1/8" = 1'-0"	

2nd 2 floor plans

Mille Lacs County Courthouse

Milaca, Minnesota

Charles W. Nelson

1976

DEC 6 1976

Minnesota Historical Society, 690

Cedar Street, St. Paul, Minn.

Photo-copy of architect's drawing;

second floor plan

1A/01656

DJE MAR 25 1977

FROM THE COLLECTIONS OF THE
MINNESOTA HISTORICAL SOCIETY
THIS PHOTOGRAPH IS FOR REFERENCE USE
ONLY. IT MAY NOT BE REPRODUCED OR
SOLD WITHOUT WRITTEN PERMISSION.