



Dining Room
Handover House

NPS Number 70.6.41.0012

Title: St. Julien - Ravenel
House

2

Loc. Clemson, S.C.

PROPERTY OF THE NATIONAL REGISTER



Hanover House
Clemson University

UNITED STATES DEPARTMENT OF THE INTERIOR
NATIONAL PARK SERVICE

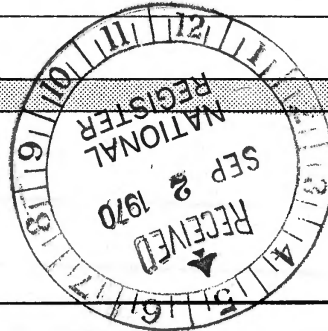
**NATIONAL REGISTER OF HISTORIC PLACES
PROPERTY PHOTOGRAPH FORM**

(Type all entries - attach to or enclose with photograph)

STATE	
South Carolina	
COUNTY	
Pickens	
FOR NPS USE ONLY	
ENTRY NUMBER	DATE
70.6.41.0012	6/5/70

SEE INSTRUCTIONS

1. NAME			
COMMON: St. Julien-Ravenel House			
AND/OR HISTORIC: Hanover House			
2. LOCATION			
STREET AND NUMBER: Clemson University Campus			
CITY OR TOWN: Clemson			
STATE: South Carolina	CODE 45	COUNTY: Pickens	CODE 39
3. PHOTO REFERENCE			
PHOTO CREDIT: Clemson University			
DATE OF PHOTO: 1963			
NEGATIVE FILED AT: Clemson University			
4. IDENTIFICATION			
DESCRIBE VIEW, DIRECTION, ETC. Back or east view			



Log.

NPS Number 70.6.41.0012
 Title: St. Julien-Ravenel House
 #1

52-22

63-149



HANOVER HOUSE (North elevation/facade)



HANOVER HOUSE (West elevation)



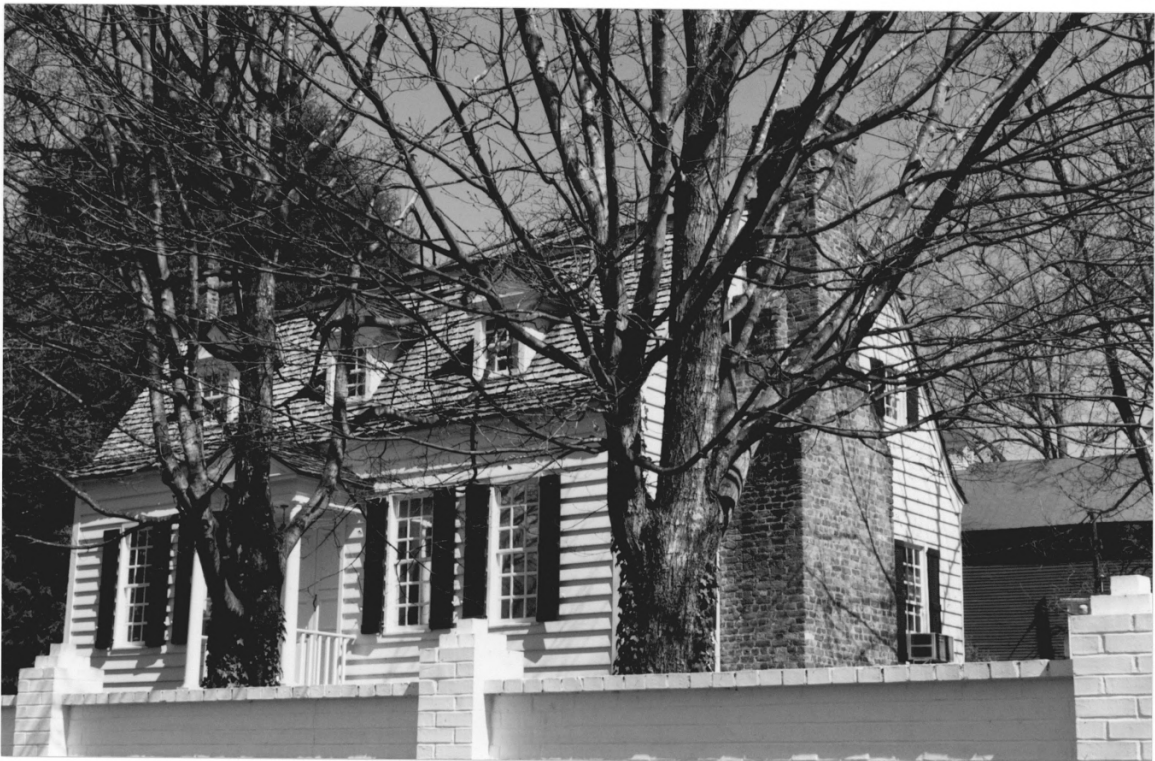
HANOVER HOUSE (South elevation/facade)



HANOVER HOUSE (East elevation, illustrating double-shouldered chimney)



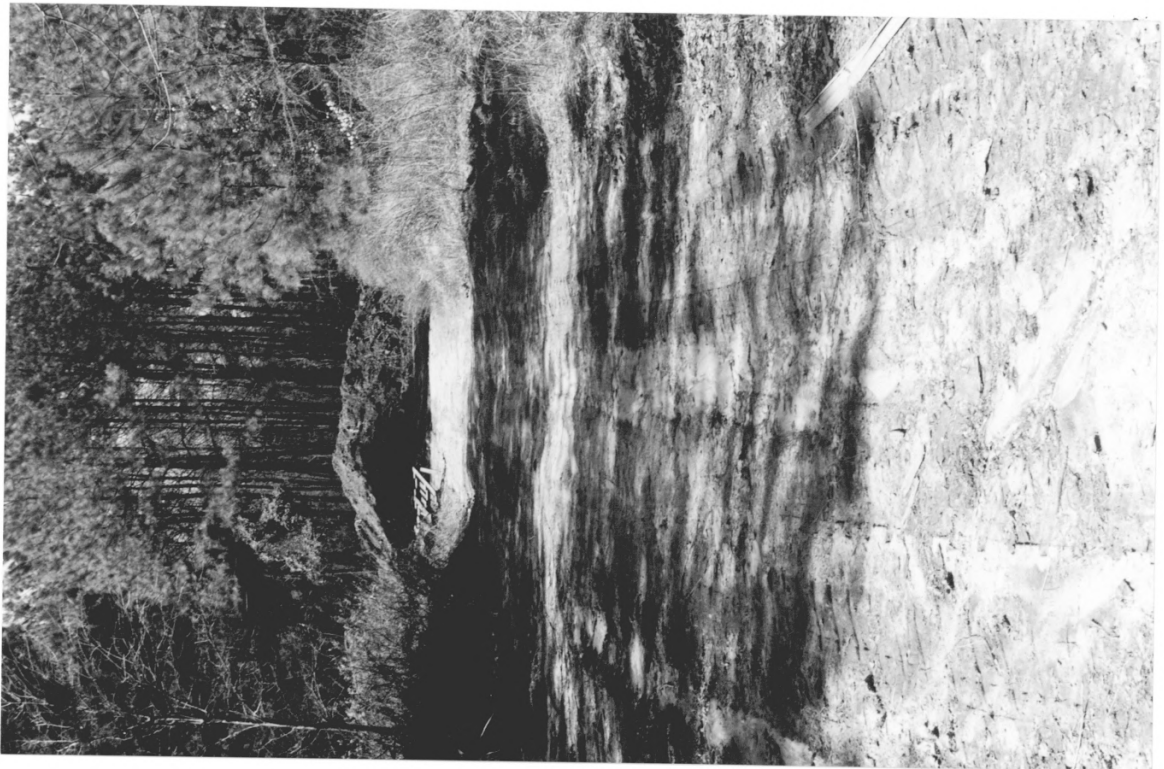
HANOVER HOUSE (Northwest oblique view)



HANOVER HOUSE (Northwest oblique view;
Clemson College Sheep Barn at far right)



PROPOSED SITE FOR HANOVER HOUSE
(in South Carolina Botanical Garden)



ROAD AT PROPOSED HANOVER HOUSE SITE



VIEW FROM PROPOSED HANOVER HOUSE SITE TOWARD EXPERIMENTAL FIELDS



WOODED NATURE OF PROPOSED HANOVER HOUSE SITE



VIEW OF PROPOSED HOUSE SITE
(Rubble pile at right in distance)



PROPOSED HANOVER HOUSE SITE
(Corner stakes for house seen at center)



DETAIL OF CORNER STAKE FOR HANOVER HOUSE (Proposed site)



PILE OF RUBBLE NEAR PROPOSED SITE OF HANOVER HOUSE