

UNITED STATES DEPARTMENT OF THE INTERIOR
NATIONAL PARK SERVICEPH0685682
FOR NPS USE ONLY

RECEIVED

OCT 10 1978

DATE ENTERED

DEC 8 1978

NATIONAL REGISTER OF HISTORIC PLACES
INVENTORY -- NOMINATION FORMSEE INSTRUCTIONS IN HOW TO COMPLETE NATIONAL REGISTER FORMS
TYPE ALL ENTRIES -- COMPLETE APPLICABLE SECTIONS

1 NAME

HISTORIC

Ellas - McKay House

AND/OR COMMON

McKay House

2 LOCATION

STREET & NUMBER

404 N. Walls St.

CITY, TOWN

Clarendon

VICINITY OF

NOT FOR PUBLICATION

CONGRESSIONAL DISTRICT

First

STATE

Arkansas

CODE

05

COUNTY

Monroe

CODE

095

3 CLASSIFICATION

CATEGORY

☐ DISTRICT☒ BUILDING(S)☐ STRUCTURE☐ SITE☐ OBJECT

OWNERSHIP

☐ PUBLIC☒ PRIVATE☐ BOTH

PUBLIC ACQUISITION

☐ IN PROCESS☐ BEING CONSIDERED

STATUS

☒ OCCUPIED☐ UNOCCUPIED☐ WORK IN PROGRESS

ACCESSIBLE

☒ YES: RESTRICTED☐ YES: UNRESTRICTED☐ NO

PRESENT USE

☐ AGRICULTURE☐ COMMERCIAL☐ EDUCATIONAL☐ ENTERTAINMENT☐ GOVERNMENT☐ INDUSTRIAL☐ MILITARY☐ MUSEUM☐ PARK☒ PRIVATE RESIDENCE☐ RELIGIOUS☐ SCIENTIFIC☐ TRANSPORTATION☐ OTHER:

4 OWNER OF PROPERTY

NAME

R. J. McKay Estate

STREET & NUMBER

404 N. Walls

CITY, TOWN

Clarendon

VICINITY OF

STATE

Arkansas

5 LOCATION OF LEGAL DESCRIPTION

COURTHOUSE,
REGISTRY OF DEEDS, ETC.

County Clerk's Office

Monroe County Courthouse

STREET & NUMBER

123 Madison

CITY, TOWN

Clarendon

STATE

Arkansas

6 REPRESENTATION IN EXISTING SURVEYS

TITLE

DATE

☐ FEDERAL ☐ STATE ☐ COUNTY ☐ LOCALDEPOSITORY FOR
SURVEY RECORDS

CITY, TOWN

STATE

7 DESCRIPTION

CONDITION

—EXCELLENT
☒GOOD
—FAIR

—DETERIORATED
—RUINS
—UNEXPOSED

CHECK ONE

—UNALTERED
☒ALTERED

CHECK ONE

☒ORIGINAL SITE
—MOVED DATE _____

DESCRIBE THE PRESENT AND ORIGINAL (IF KNOWN) PHYSICAL APPEARANCE

The Ellas - McKay House is an architecturally significant and charming Queen Anne Cottage with Eastlake detailing. The house is a yellow two-story, hipped-roofed, irregularly massed, clapboard-frame building set on a 36" brick foundation with its entry facing west. The house is also located on a corner lot, among homes which vary in origin from the 1890's to the 1960's and are in both good and bad condition. The exterior of the house retains its original character and is in good-to-excellent condition.

The front of the house is basically composed of two bays. The left bay (when facing the building) is defined at the roof level by a clipped-gabled roof complete with barge board decoration, on the second floor level, by paired double-hung windows, and on the lower level by a beveled bay window with three single double-hung windows complemented by a corner scroll bracket with ornamental pendent. The top of the right bay is a small gabled porch complete with a barge board, turned wooden columns, and spindled balusters and cornice. This porch is easily accessible through a paneled door w/ glass, at the top of the second floor stairlanding inside. Below the gabled porch is an impressive semi-circular entrance verandah. This verandah, which helps define the houses's scale and entry, is complete with a porch swing. The verandah's eave overlaps the right beveled window of the left bay and continues in a parallel manner along the front of the house to finally project in a semicircular form at the corner of the house. The verandah is complete with a turned spindled cornice which rests on turned wooden columns via fanned shaped brackets. The balustrade is constructed with turned wooden spindles, complete with turned wooden newels to help define the verandah entry. The verandah is in good condition but needs some work (decking).

The front door is basically divided into two parts. The upper half contains a piece of beveled oval glass. The glass is symbolically supported by a cornice complete with dentils. Below the dentils, the door has four panels in two vertical tiers.

The basic components of the south elevation are divided into three parts. On the left side, is the projecting end of the entry verandah. In the central area is a projecting gabled bay (one of Three) and to the right on the lower level is a porch with a latticework screen. The lattice is constructed with 1/2" x 1" members laid 90 degrees to one another. The lattice and porch wrap from the south-east third of the house to completely cover the rear the house. The lattice porch still has two original pie tables which are built into and supported by the latticework and the floor. The view from inside the house through the lattice-porch occurs from within the kitchen and dining areas (see floor plans).

UNITED STATES DEPARTMENT OF THE INTERIOR
NATIONAL PARK SERVICE

**NATIONAL REGISTER OF HISTORIC PLACES
INVENTORY -- NOMINATION FORM**

FOR NPS USE ONLY

RECEIVED OCT 10 1978

DATE ENTERED DEC 8 1978

CONTINUATION SHEET Description ITEM NUMBER 7 PAGE 2

The northern elevation consists of three components. Towards the back (left) of the house, a bathroom (added around 1913) complete with a curved roof blends in well and complements the scale of the house. The central element in the elevation is a projecting gabled bay which is different on the lower level because it does not become a beveled bay. Also it is different in that the corner trim rises to suggest a pilaster.

The house also has a garden which is located on the southeastern part of the property. The garden is defined by a fence constructed with 3" x 3' boards pointed at the top complete with arbors at the entry. The garden and fence are an original part of the house. The house also has azaleas planted along its front (West), south, and north sides. A large (150 years old) oak tree resides in the front yard. An old but not original storage shed is placed at the back extremity of the property.

The interior of the house is in good condition. The floor is still the original hardwood. The walls have been repainted or repapered. The original trim around doors, windows, and ceilings is in excellent condition. The baseboard trim is accented throughout the house with corner pendants. The decorative hardware and light fixtures are original. The house retains its essential character even though alterations have been made. The original velvet curtains have been removed. The original 11'-12' ceilings have been lowered (1957) to accommodate HVAC ductwork. When the ceiling was lowered a Eastlake screen (latticework) was removed from the doorway between the entry parlor and the central living area (see floor plan). This screen is in storage and is in excellent condition. Upstairs there has been a small alteration. A small bathroom was added (1913). This addition is small and unnoticeable because of the irregular massing of the house.

UNITED STATES DEPARTMENT OF THE INTERIOR
NATIONAL PARK SERVICE

**NATIONAL REGISTER OF HISTORIC PLACES
INVENTORY -- NOMINATION FORM**

FOR NPS USE ONLY

OCT 10 1978

RECEIVED

DEC 8 1978

DATE ENTERED

CONTINUATION SHEET Description ITEM NUMBER 7 PAGE 3

The house is entered through the verandah to the foyer. The foyer contains two doors, one straight ahead and one to the left. To the right, after entering, the foyer is an open-string, open-well, three-flight stairway with a winder. The stairway is a major feature of the interior. The stair's balusters are constructed with turned wooden spindles. The stairway is also decoratively paneled underneath. The meeting of the stairway and the upper floor is accented by a projecting corner newel. The room to the left of the foyer is the entry parlor. This room has a beveled bay with three single double-hung windows. This room still retains its original light fixture. Entering straight through the foyer instead of turning to the left, one enters another room with a projected bay, also with its original light fixture. Both rooms just described open via original sliding doors to a centralized living area (see floor plan). This room was heated by a coal fire and above the stove was an opening in the upper floor to allow heat to circulate upstairs. Also opening into this centralized living area on its third side (east) through sliding paneled doors is the large dining room. The latticework-porch runs along the south wall of the dining room. From the dining room one can either go onto the porch or enter the kitchen via a hall which also connects to the bathroom addition mentioned earlier (see floor plan).

The kitchen contains three tall double-hung windows and an exit onto the back porch. The kitchen once had a dumbwaiter. The fixtures are not original but are inadequate and old.

Upstairs the stairway intersects a hallway which runs east-west. Three bedrooms and one bath (addition) is served by the hallway. The rooms are basically alike. All but one of the bedrooms enjoy paired double-hung windows with the sash about 1' above the floor. The ceiling is clipped at different walls in each room where the hipped-roof adds character to the bedroom spaces. The combination of 9' ceiling heights (clipped), and large paired windows provide a pleasant sense of proportion which reinforces the scale and imagery of the house as a whole.

8 SIGNIFICANCE

PERIOD	AREAS OF SIGNIFICANCE -- CHECK AND JUSTIFY BELOW			
— PREHISTORIC	— ARCHEOLOGY-PREHISTORIC	— COMMUNITY PLANNING	— LANDSCAPE ARCHITECTURE	— RELIGION
— 1400-1499	— ARCHEOLOGY-HISTORIC	— CONSERVATION	— LAW	— SCIENCE
— 1500-1599	— AGRICULTURE	— ECONOMICS	— LITERATURE	— SCULPTURE
— 1600-1699	<input checked="" type="checkbox"/> ARCHITECTURE	— EDUCATION	— MILITARY	— SOCIAL/HUMANITARIAN
— 1700-1799	— ART	— ENGINEERING	— MUSIC	— THEATER
<input checked="" type="checkbox"/> 1800-1899	— COMMERCE	— EXPLORATION/SETTLEMENT	— PHILOSOPHY	— TRANSPORTATION
— 1900-	— COMMUNICATIONS	— INDUSTRY	— POLITICS/GOVERNMENT	— OTHER (SPECIFY)
		— INVENTION		

SPECIFIC DATES ^E 1908...circa 1880's BUILDER/ARCHITECT T. S. Ellas ^E

STATEMENT OF SIGNIFICANCE

¹ The Ellas - McKay House is an architecturally unique Queen Anne Cottage with Eastlake detailing. ^F The combination of the house's humane massing and it's thorough execution of detail (from the use of barge boards, balustrades, corner brackets, latticework, down to the corner pendants in the base trim) make this house truly unique in this state-region. ² The house is also one of two substantial high-Victorian structures remaining in Clarendon, a small, architecturally significant rivertown which played an important role in the development of this state. This house has the potential to be completely renovated and provide the public with a truly unique and complete expression of Victorian life and imagery.

³ The house is also significant because of the prominent Clarendon family who consider this house their family home and are associated with this structure.

^A The land was originally owned by Simon P. Hughes, a former governor of Arkansas. J. S. Walls owned the land when ^B it was purchased by T. S. Ellas on June 30, 1908. T.S. Ellas was a carpenter and sawmiller. He built this house in 1908 for his family. He was a competent carpenter who constructed other structures in Clarendon. One such structure was a grandstand at the athletic field. This grandstand is said to have been built with large, heavy timbers and was very large in scale.

On March 5, 1942 ^C R.J. and Josie McKay purchased the property from Bernice Wheelis, who was a daughter or step-daughter of T.S. Ellas. R. J. McKay, born 1882 in Keevil, Ark., served as county treasurer for 18 years and also as deputy sheriff. R.J. and Josie had 11 children. The majority of ^D whom have made their home in Clarendon. R. J.'s sons have become established business and civic leaders in the community.

9 MAJOR BIBLIOGRAPHICAL REFERENCES

- A Warranty Deed, Monroe County Courthouse, Clarendon, Ar.--S. Hughes- W. Smith
- B Warranty deed, Monroe County Courthouse, Clarendon, Ar.--J.A. Walls- T.S. Ellas
- C Interview, McKay family, June 1978
- D Interview, Robert and Jean McKay, May 1977- July 1978
- E Interview, Lena Everett, April 1978
- F Cyrus Sutherland, Architectural Preservation class, April 1977
- G Warranty deed, Monroe County courthouse - B. Wheelis- R.J. McKay

10 GEOGRAPHICAL DATA

ACREAGE OF NOMINATED PROPERTY less than one acre

QUADRANGLE NAME Clarendon, Ark.

QUADRANGLE SCALE 1:62500

UTM REFERENCES 500 425

A 1 5 6 5 4 3 6 0 3 8 4 0 3 6 0

B

ZONE EASTING NORTHING

ZONE EASTING NORTHING

C

D

E

F

G

H

I

J

K

L

VERBAL BOUNDARY DESCRIPTION

The property is located in Lot 18 in Block One of Walker's Addition. The property is bounded on the south by Walker St., on the west by Walls St., on the north by Lot 17, on the east by a 10' alley.

LIST ALL STATES AND COUNTIES FOR PROPERTIES OVERLAPPING STATE OR COUNTY BOUNDARIES

STATE	CODE	COUNTY	CODE
-------	------	--------	------

STATE	CODE	COUNTY	CODE
-------	------	--------	------

11 FORM PREPARED BY

NAME / TITLE

Steve Warnock-Architectural Apprentice

ORGANIZATION

DATE

8/ 3/ 78

STREET & NUMBER

500 E. 8th ST.

TELEPHONE

376 6671

CITY OR TOWN

Little Rock, Arkansas

72202

STATE

AR.

12 STATE HISTORIC PRESERVATION OFFICER CERTIFICATION

THE EVALUATED SIGNIFICANCE OF THIS PROPERTY WITHIN THE STATE IS:

NATIONAL

STATE

LOCAL X

As the designated State Historic Preservation Officer for the National Historic Preservation Act of 1966 (Public Law 89-665), I hereby nominate this property for inclusion in the National Register and certify that it has been evaluated according to the criteria and procedures set forth by the National Park Service.

STATE HISTORIC PRESERVATION OFFICER SIGNATURE

TITLE

SHPO

DATE

10/3/78

FOR NPS USE ONLY

I HEREBY CERTIFY THAT THIS PROPERTY IS INCLUDED IN THE NATIONAL REGISTER

DATE

12-8-78

ATTEST:

KEEPER OF THE NATIONAL REGISTER

DATE

12-7-78

CHIEF OF REGISTRATION

UNITED STATES DEPARTMENT OF THE INTERIOR
NATIONAL PARK SERVICE

**NATIONAL REGISTER OF HISTORIC PLACES
INVENTORY -- NOMINATION FORM**

FOR NPS USE ONLY

RECEIVED OCT 10 1978

DATE ENTERED DEC 8 1978

CONTINUATION SHEET Significance ITEM NUMBER 8 PAGE 2

Robert McKay, a son of R.J., and his family renovated the house in 1974, after the house was used as a rent house for years. The renovation project included: painting the house a nice yellow, replacing missing decorative pieces, etc. The house is now used as a private residence by the Robert McKay family.

Property

E l l a s - M c K a y H a u s e

State

Ark

Working Number

10.10.78.4226

78000613

TECHNICAL

Photos

10

Maps

1

UTM incorrect OK BB

CONTROL

pl

10.11.78

HISTORIAN

Shufy

12-4-78

accept

Significance - described primarily in context of architectural representation. As mentioned, house built by local carpenter important in community - and lived in by other "prominent" families.

ARCHITECTURAL HISTORIAN

The statement of significance explains that this Queen Anne house is unique in the state because of its massing and attention to detail. Also, it is one of only two remaining substantial High-Victorian structures remaining in the town. The house is remarkable for the large amount of surviving structure and detail. The only major alteration dating within the last 50 years is the lowering of the downstairs ceilings for air-conditioning ducts.

Berggren accept 12/6/78

ARCHEOLOGIST

OTHER

HAER

Inventory _____

Review _____

REVIEW UNIT CHIEF

significance as described above.

Shufy for ↑

12-1-78

accept

BRANCH CHIEF

KEEPER

National Register Write-up

Send-back _____

Entered

DEC 8 1978

Federal Register Entry

Re-submit _____

INT:2106-74



Ellas - McKay House Clarendon, Ar.

View of entry
(west)

1978

P7

1. Ellas McKay House
2. Clarendon, Arkansas
3. July, 1978 *Gunnice Co*
4. Steve Warnock
5. 500 East 8th, Little Rock
6. viewed from the west
7. photo # 1

OCT 10 1978

DEC 8 1978



Ellas - McKay House
Clarendon, Ar.

View of entry before
renovation- 1971

P 6

1. Ellas McKay House
2. Clarendon, Arkansas
3. July, 1978
4. Steve Warnock
5. 500 East 8th, Little Rock
6. viewed from the west (1971 photo)
7. photo # 2

Monroe Co

OCT 10 1978

DEC 8

1978



Ellas McKay House
Clarendon, Ar.

View from south-east

1978

P14

1. Ellas McKay House
2. Clarendon, Arkansas
3. July, 1978
4. Steve Warnock
5. 500 East 8th, Little Rock
6. viewed from the southeast
7. photo # 3

Gnomoe Cd

OCT 10 1978

DEC 8 1978



Ellas - McKay House Clarendon, Ar.

View from south-east on walker st.

1978

P12

1. Ellas McKay House
2. Clarendon, Arkansas
3. July, 1978
4. Steve Warnock
5. 500 East 8th, Little Rock
6. viewed from the southeast
7. photo # 4

Monroe Co.

OCT 10 1978

DEC 8 1978



Ellas - McKay House Clarendon, Ar.

View of bathroom addition on north-
east corner of house. Looking east

1978

P 2

1. Ellas McKay House
2. Clarendon, Arkansas
3. July, 1978
4. Steve Warnock
5. 500 East 8th, Little Rock
6. viewed from the east
7. photo # 5

Gnomme Co.

OCT 10 1978

DEC 8 1978



Ellas - McKay House

Clarendon, Ar.

View of front door

1973

P 10

1. Ellas McKay House
2. Clarendon, Arkansas
3. July, 1978 *Yonkers Co.*
4. Steve Warnock
5. 500 East 8th, Little Rock
6. view of front door
7. photo # 6

DEC 8 1978

OCT 10 1978



Ellas - McKay House Clarendon, Ar.

View of front door. - panel detail,
hardware, etc.

1978

P 1

1. Ellas McKay House
2. Clarendon, Arkansas
3. July, 1978
4. Steve Warnock
5. 500 East 8th, Little Rock
6. detail of entry door
7. photo # 7

Gronwall

OCT 10 1978

DEC 8 1978



Ellas - McKay House Clarendon, Ar.

View of original pie table on latticework
porch

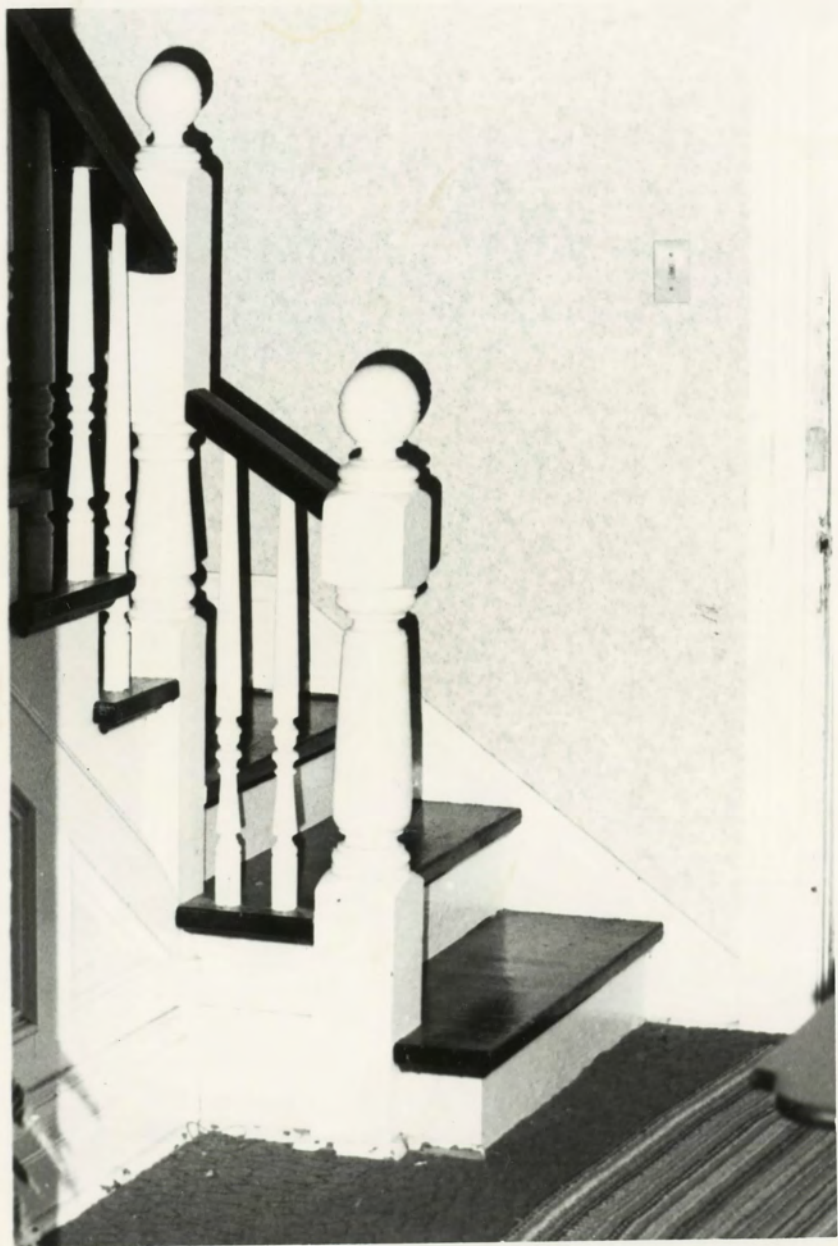
1978

P13

1. Ellas McKay House
2. Clarendon, Arkansas
3. July, 1978 *G. Warnock*
4. Steve Warnock
5. 500 East 8th, Little Rock
6. detail of latticework
7. photo # 8

OCT 10 1978

DEC 8 1978



Ellas - McKay House Clarendon, Ar.

View of newels on stairs, balusters, etc.

1978

P5

1. Ellas McKay House
2. Clarendon, Arkansas
3. July, 1978
4. Steve Warnock
5. 500 East 8th, Little Rock
6. interior stairway
7. photo # 9

Grouse CC

OCT 10 1978

DEC 8 1978



Ellas - McKay House Clarendon, Ar.

View of swing on verandah

1978

P 9

1. Ellas McKay House
2. Clarendon, Arkansas
3. July, 1978
4. Steve Warnock *Monroe Co*
5. 500 East 8th, Little Rock
6. view of verandah
7. photo # 10

OCT 10 1978

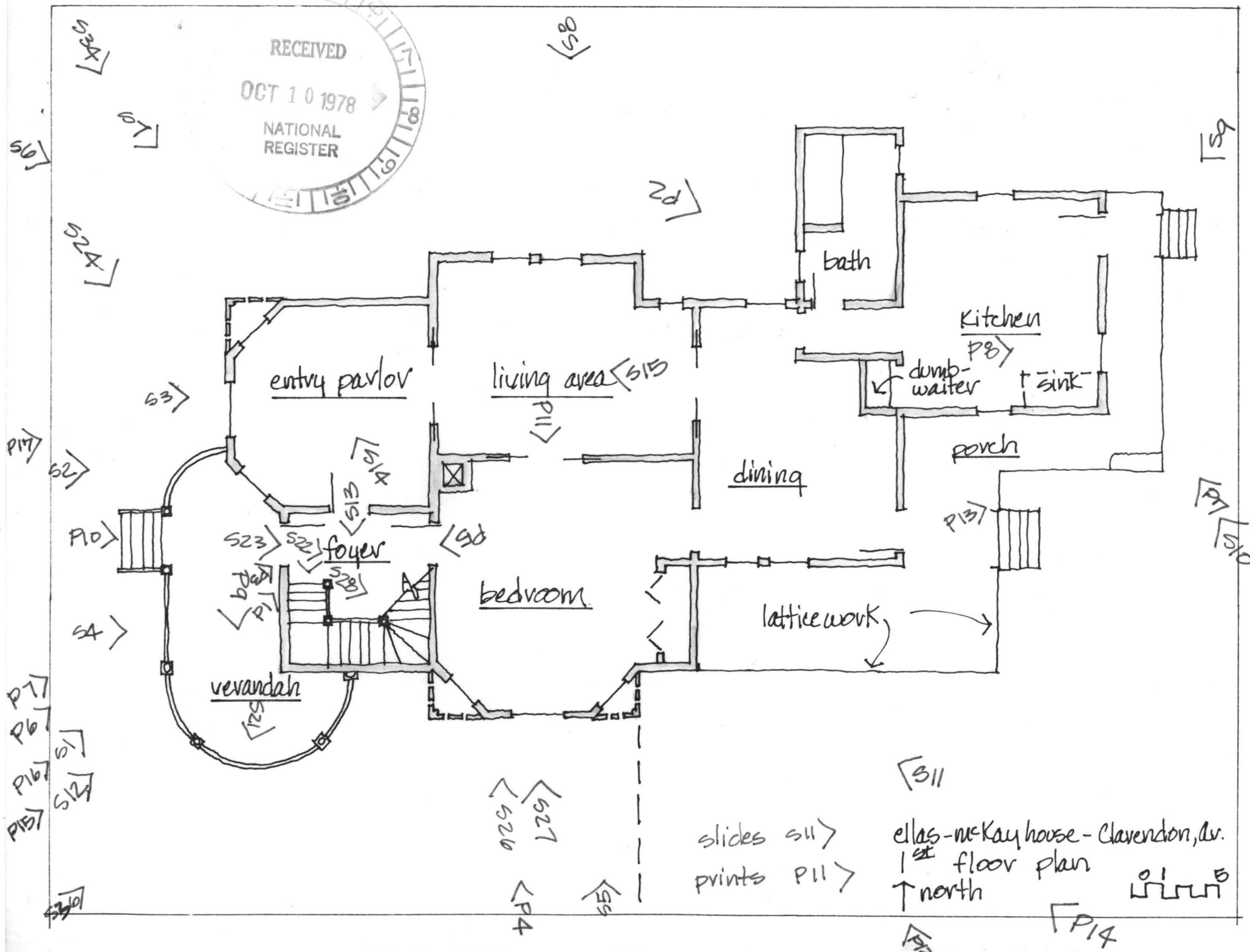
DEC 8 1978

DEC 8 1978

RECEIVED

OCT 10 1978

NATIONAL
REGISTER

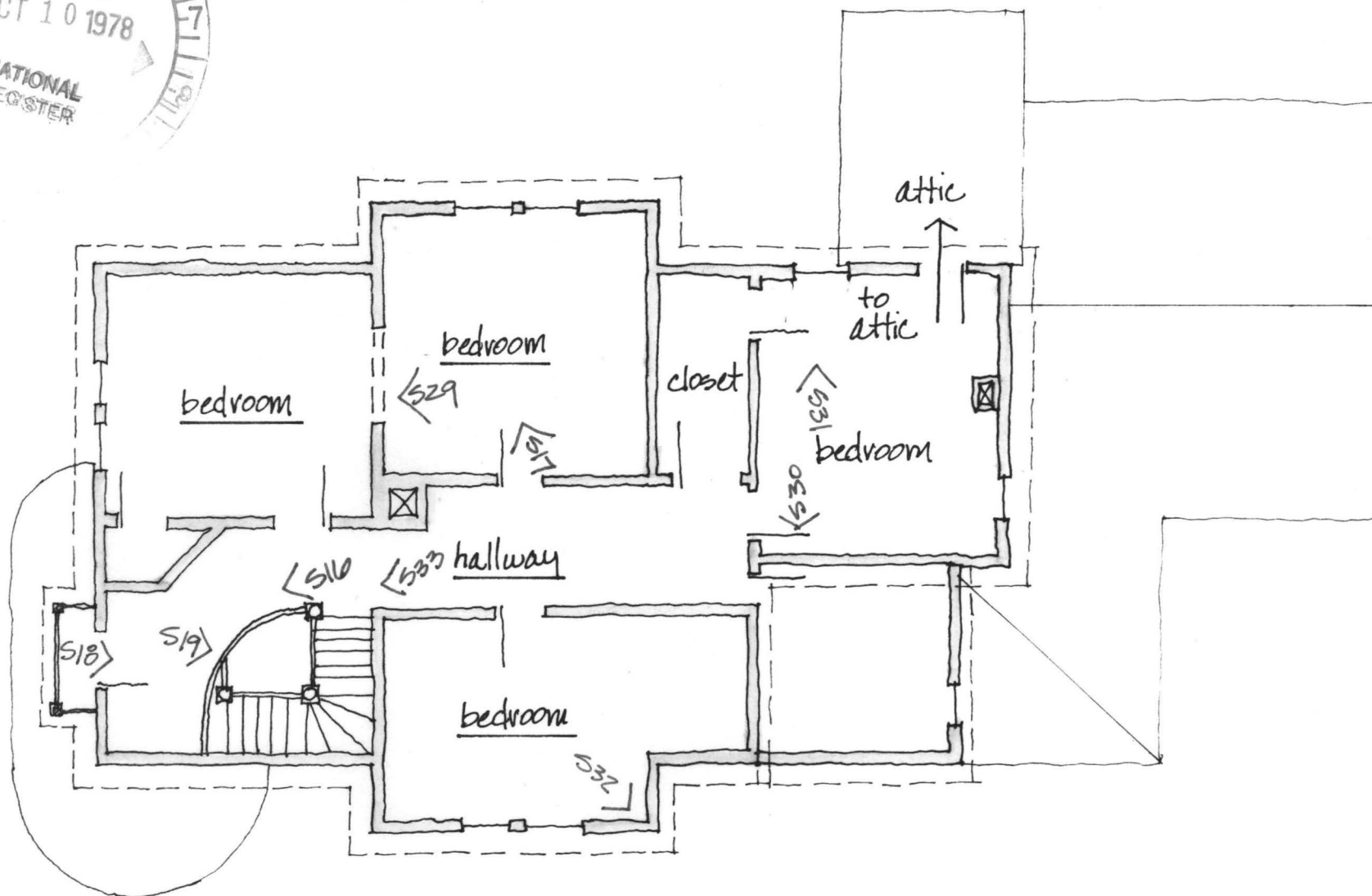
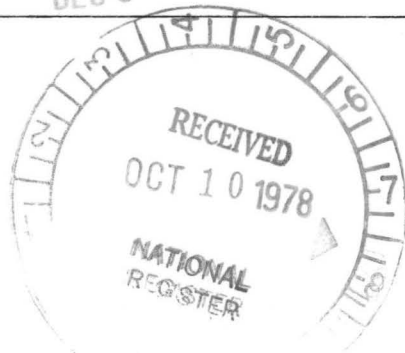


slides S11
prints P11

Ellas-McKay house - Clarendon, Ar.
1st floor plan
↑ north

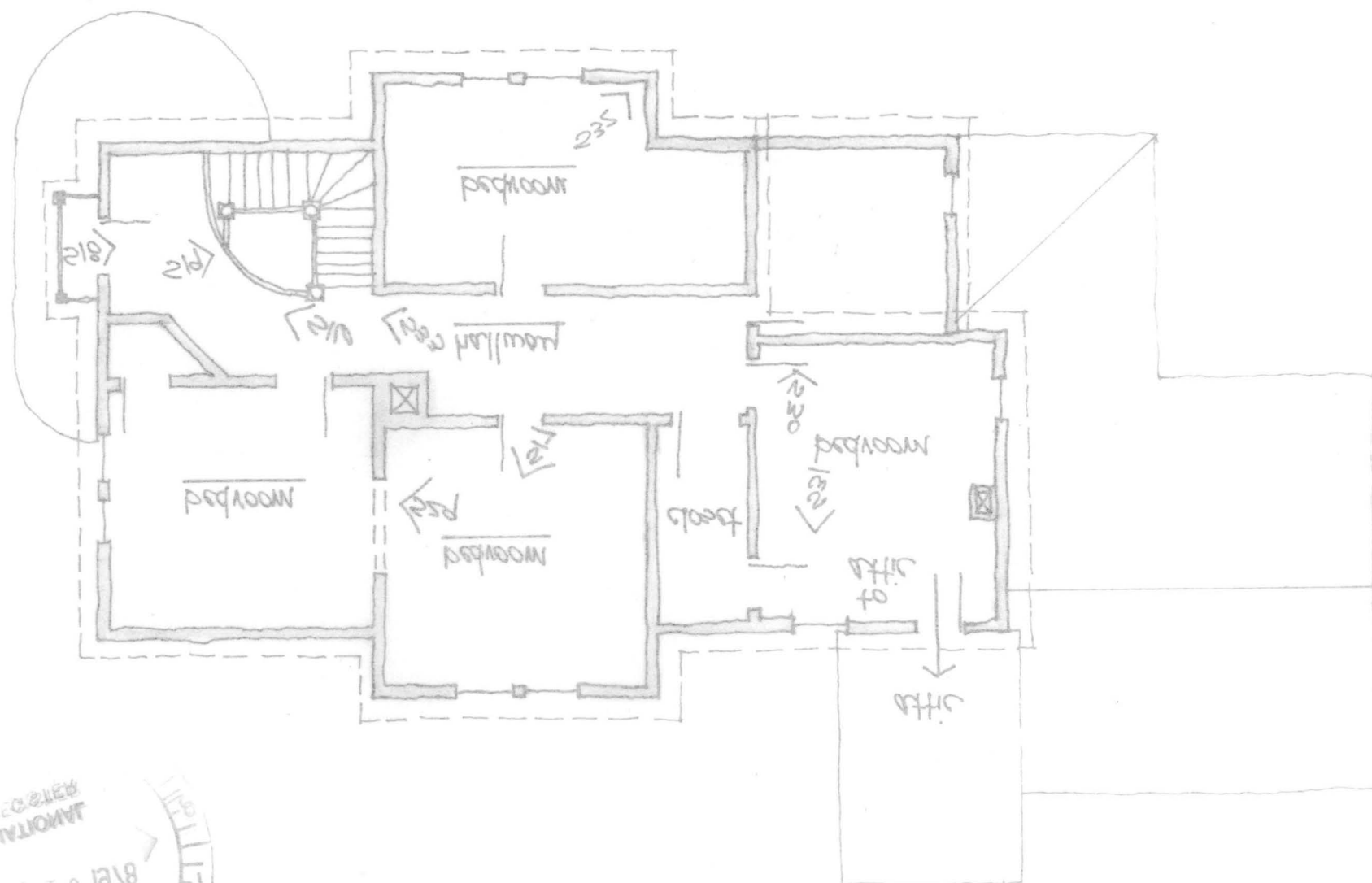
01

DEC 8 1978

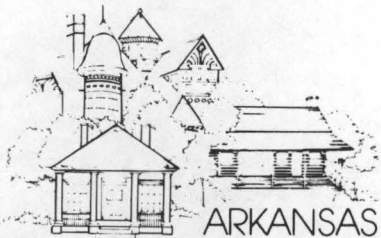


elias-mckay house - 2nd flr.
↑ north

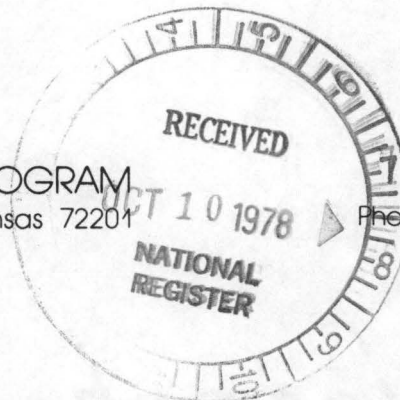
North
6/10-10/10/10 - 5/10/10



DEC 8 1978



AUG 16 1978



ARKANSAS HISTORIC PRESERVATION PROGRAM
Suite 500, Continental Building · Markham and Main · Little Rock, Arkansas 72201

Phone: (501) 371-2763

August 10, 1978

R. J. McKay Estate
404 North Walls
Clarendon, AR 72029

Re: Ellas-McKay House, Clarendon
Monroe County

Dear Sir:

The staff of the Arkansas Historic Preservation Program is preparing a National Register nomination for the above-captioned property which will be presented to the Arkansas State Review Committee at their September 12 meeting. If approved, the nomination will be submitted to the National Register office in Washington for final consideration.

The National Register of Historic Places is a listing of historic sites, buildings, objects and districts from all across the country that are worthy of preservation. Entry in the National Register is an honor which places no obligation on a private owner. It does, however, provide protection through comment by the Advisory Council on Historic Preservation from federally financed, assisted or licensed projects that might affect a National Register property.

On October 4, 1976, the President signed a Tax Reform Act of which Section 2124 refers to tax incentives for historic properties. Enclosed you will find an information sheet on that tax act.

If you have any questions concerning the program or this property's nomination, please contact Mike Shinn of our staff.

Enclosed are two copies of this letter. Please complete the form below, sign and return the original to our office. The copy is for your files. We would appreciate receiving any comments you might have concerning the nomination of this property. If we do not hear from you within 30 days your approval will be assumed.

Sincerely,

Barbara Woodard

Barbara Woodard, Deputy Director
Arkansas Historic Preservation Program

I approve of the nomination of the above property to the National Register of Historic Places X Yes No

Comments:

8/15/78
Date

The R.J. McKay Estate
Signature By Jean McKay

ENTRIES IN THE NATIONAL REGISTER

STATE ARKANSAS

Date Entered DEC 8 1978

<u>Name</u>	<u>Location</u>
Oliver House	Corning Clay County
Ellas-McKay House	Clarendon Monroe County
McLeod, Angus, House	Fort Smith Sebastian County

Also Notified

Honorable Dale Bumpers
Honorable Kaneaster Hodges, Jr.
Honorable Bill Alexander, Jr.
Honorable John P. Hammerschmidt

State Historic Preservation Officer
Ms. Anne Bartley
Acting Director
Arkansas Historic Preservation Program
Suite 500, Continental Building
Markham and Main Streets
Little Rock, Arkansas 72201

NATIONAL REGISTER DATA SHEET

① NAME as it appears on federal register: Ellas-McKay House
 ② OTHER NAMES: McKay House
 ③ date of entry: DEC 8 1978
 ④ county code: 095

⑤ LOCATION street & number: 404 N. Walls St.
 city / town: Clarendon
 vicinity of:
 state: AR
 county: Monroe
 ⑥ NPS REGION: SW

⑦ OWNER ☒ PRIVATE ☐ STATE ☐ MUNICIPAL ☐ COUNTY ☐ MULTIPLE ☐ FEDERAL (agency name):
 ⑧ ADMINISTRATOR:

⑨ EXISTING SURVEYS ☐ HABS ☐ HAER ☐ NHL
 ⑩ FUNDED? ☐ YES ☐ NO
 ⑪ CONGRESS DISTRICT: 1
 ⑫ SOURCE of NOMINATION ☐ STATE ☐ FEDERAL
 If state who prepared form?

⑬ WITHIN NATIONAL REGISTER HISTORIC DISTRICT? ☐ YES, NAME: ☐ NO
 ⑭ WITHIN NATIONAL HISTORIC LANDMARK? ☐ YES, NAME: ☐ NO
 ⑮ ACRES: ☐ LOCAL ☐ PRIVATE ORGANIZATION

⑯ CONDITION
☐ excellent
☐ good
☐ fair
☐ deteriorated
☐ ruins
☐ unexposed
☐ unexcavated
☐ altered
☐ unaltered
☐ reconstructed
☐ excavated
☐ original site
☐ moved
☐ unknown
 ⑰ features:
 INTERIOR ☐ SUBSTANTIALLY INTACT-1
☐ NOT INTACT-0
☐ UNKNOWN-4
☐ NOT APPLICABLE-7
 EXTERIOR ☐ SUBSTANTIALLY INTACT-2
☐ NOT INTACT-0
☐ UNKNOWN-5
☐ NOT APPLICABLE-8
 ENVIRONS ☐ SUBSTANTIALLY INTACT-3
☐ NOT INTACT-0
☐ UNKNOWN-6
☐ NOT APPLICABLE-9

⑱ ACCESS ☐ YES-Restricted ☐ YES-Unrestricted ☐ No Access ☐ Unknown
 ⑲ ADAPTIVE USE ☐ YES ☐ NO
 ⑳ SAVED? ☐ YES
 IS PROPERTY A HISTORIC DISTRICT? ☐ yes ☐ no

㉑ AREAS OF SIGNIFICANCE:
☐ ARCHEOLOGY-prehistoric-2
☐ ARCHEOLOGY-historic-1
☐ AGRICULTURE-3
☐ ARCHITECTURE-4
☐ ART-5
☐ ENGINEERING-11
☐ ENTERTAINMENT-26
☐ EXPLORATION-12
☐ HEALTH-27
☐ INDUSTRY-13
☐ INVENTION-14
☐ LANDSCAPE ARCH.-15
☐ LAW-16
☐ LITERATURE-17
☐ MILITARY-18
☐ MUSIC-19
☐ PHILOSOPHY-20
☐ POLITICS/GOVT.-21
☐ RELIGION-22
☐ SCIENCE-23
☐ SOCIAL/HUMANITARIAN-24
☐ SOCIAL/CULTURAL-30
☐ TRANSPORTATION-25
☐ RECREATION-28
☐ SETTLEMENT-29
☐ URBAN PLANNING-31
☐ OTHER (SPECIFY)
 ㉒ CLAIMS: explain
 'first' ☐
 'oldest' ☐
 'only' ☐

㉓ functions
 WHEN HISTORICALLY SIGNIFICANT:
 CURRENTLY:
 ㉔ dates of initial construction:
 major alterations:
 historic events:
 ㉕ ETHNIC GROUP ASSOCIATION

㉖ architectural style(s):
 ㉗ architect:
 ㉘ master builder:
 ㉙ engineer:

㉚ landscape architect / garden designer:
 ㉛ interior decorator:
 ㉜ artist:
 ㉝ artisan:
 ㉞ builder/contractor:

㉟ NAMES give role & date
 PERSONAL:
 EVENTS:
 INSTITUTIONAL:

㊱ NATIONAL REGISTER WRITE-UP