



Photo 1

1. St. Thomas Synagogue
2. Charlotte Amalie,
St. Thomas, USVI
3. Sean Krigger
4. December 1996
5. Neg - NAT'L REG. Programs
Div - Atlanta
6. Exterior view - facing
north showing southeast
corner of Synagogue Office,
steps leading from street
to Synagogue, wrought iron
fence, and front of
Synagogue
7. Photo 1



Photo 3

1. St. Thomas Synagogue
2. Charlotte Amalie,
St. Thomas, USVI
3. Sean Krigger
4. December 1996
5. Neg - NAT'L REC Program
Div. - Atlanta
6. Exterior view facing
north of window on the
front of the synagogue
7. Photo 3



Photo 5

1. St. Thomas Synagogue,
2. Charlotte Amalie, 1851
St. Thomas
3. Jean Krigger
4. December 1843
5. Nov. - NAT'L REGISTER
Advertiser - Atlanta
6. Exterior view of front
of Synagogue - facing
north - showing front
columns.
7. Photo 5



Old or Savan Jewish Cemetery
Charlotte Amalie, St. Thomas, USVI

M. Barnes

May 1995

Neg. NPS-Atlanta

View from south of cemetery area showing memorials,
cemetery wall and gate



Old or Swan Jewish Cemetery
Charlotte Amalie, St. Thomas, USVI
M. Barnes

Neg - NPS, Atlanta

View of typical brick and stone memorial, Marble
fragments are left on memorial by visitors to
the grave.

HERE LIES
THE REMAINS OF
ANTON PARDON
BORN THE 10 MARCH
1821
AND DIED
THE 13 NOV:
1875



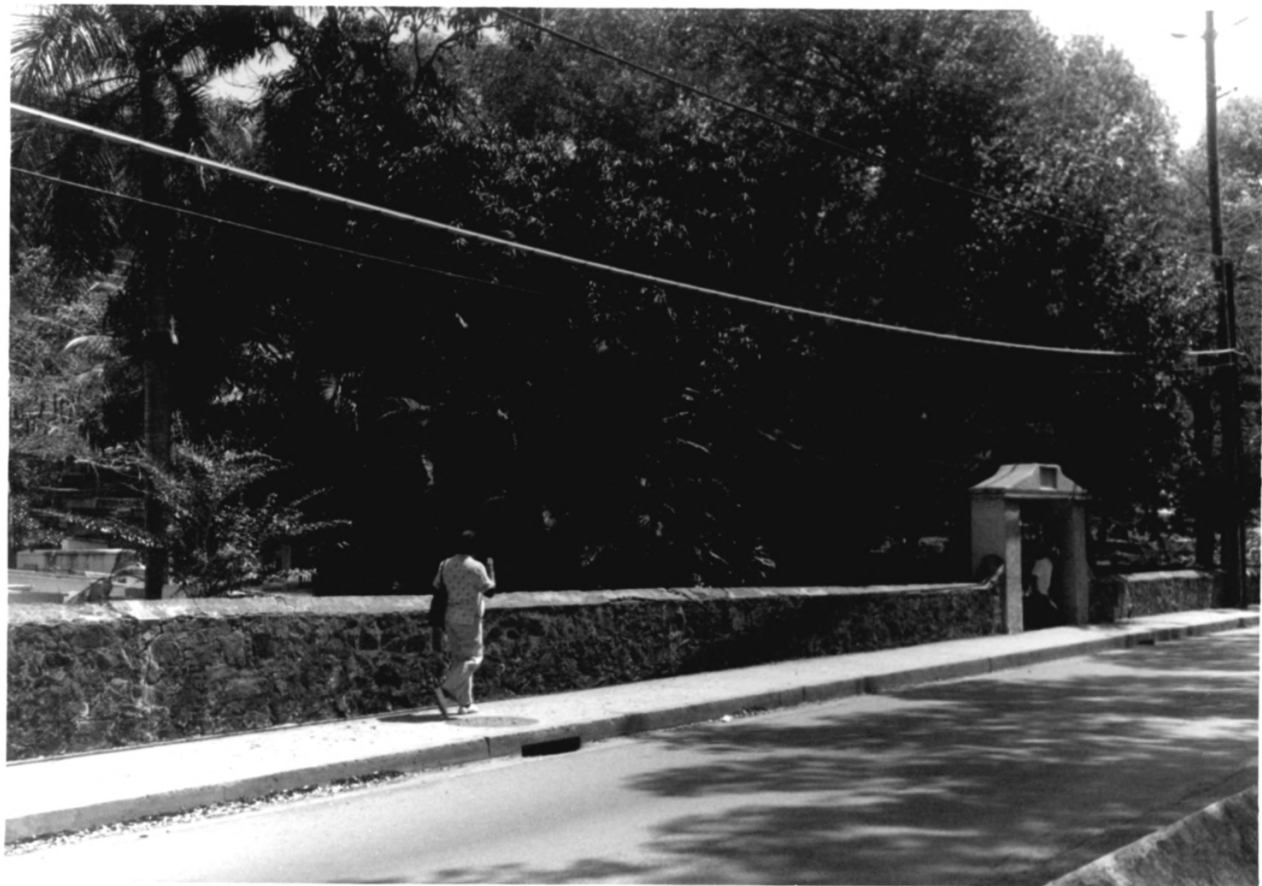
Old or Savan Jewish Cemetery
Charlotte Amalie, St Thomas, USVI

M. Barnes

May 1995

xleg. - NPS, Atlanta

View of Aron Pardo memorial. Pardo is Sephardic
(Spanish-Portuguese) name.



New or Atlanta Jewish Cemetery
Charlotte Amalie, St. Thomas, USVI
M. Barnes

May 1995

Neg - NPS, Atlanta

View of cemetery from outside showing the
House of Life and enclosure wall



New or Ahona Jewish Cemetery
Charlotte, Amalie, St. Thomas, USVI

M. Barnes

May 1995

Neg - NPS, Atlanta

Overview of cemetery showing the House of Life
in background, older stone and brick memorials
on left and newer concrete ones on right.



New or Altona Jewish Cemetery
Charlotte Amalie, St. Thomas, USVI
M. Barnes

May 1995

Neg. NPS, Atlanta

Typical last half of 19th century memorials

— 112 —
Loving Memory

— of —

OUR BELOVED MOTHER

GRACE CARDOZE DELVALLE.

BORN JUNE 2ND 1857.

DIED JUNE 13TH 1914.

"INTO HIS HANDS MY SPIRIT I CONSIGN."

SAMUEL,
SIDNEY ST.
LONDON, E.

New or Altona Jewish Cemetery
Charlotte Amalie, St Thomas, USVI

M. Barnes

May 1995

Neg - NPS, Atlanta

Typical 20th century concrete memorial

IN MEMORY OF
HANNAH JULIEN

NATIVE OF

SAINT EUSTATIUS

AGED - 87

DIED 30th JUNE 1872

24 - SIVAN 5632.

ה'תל"ב

New or Altona Jewish Cemetery
Charlotte Amalie, St. Thomas, USVI

M. Barnes

May 1995

Neg. - NPS, Atlanta

Example of post-1850s memorial - Hannah Julien.
probably part of the 18th c. Jewish immigration
from St. Eustatius to St. Thomas