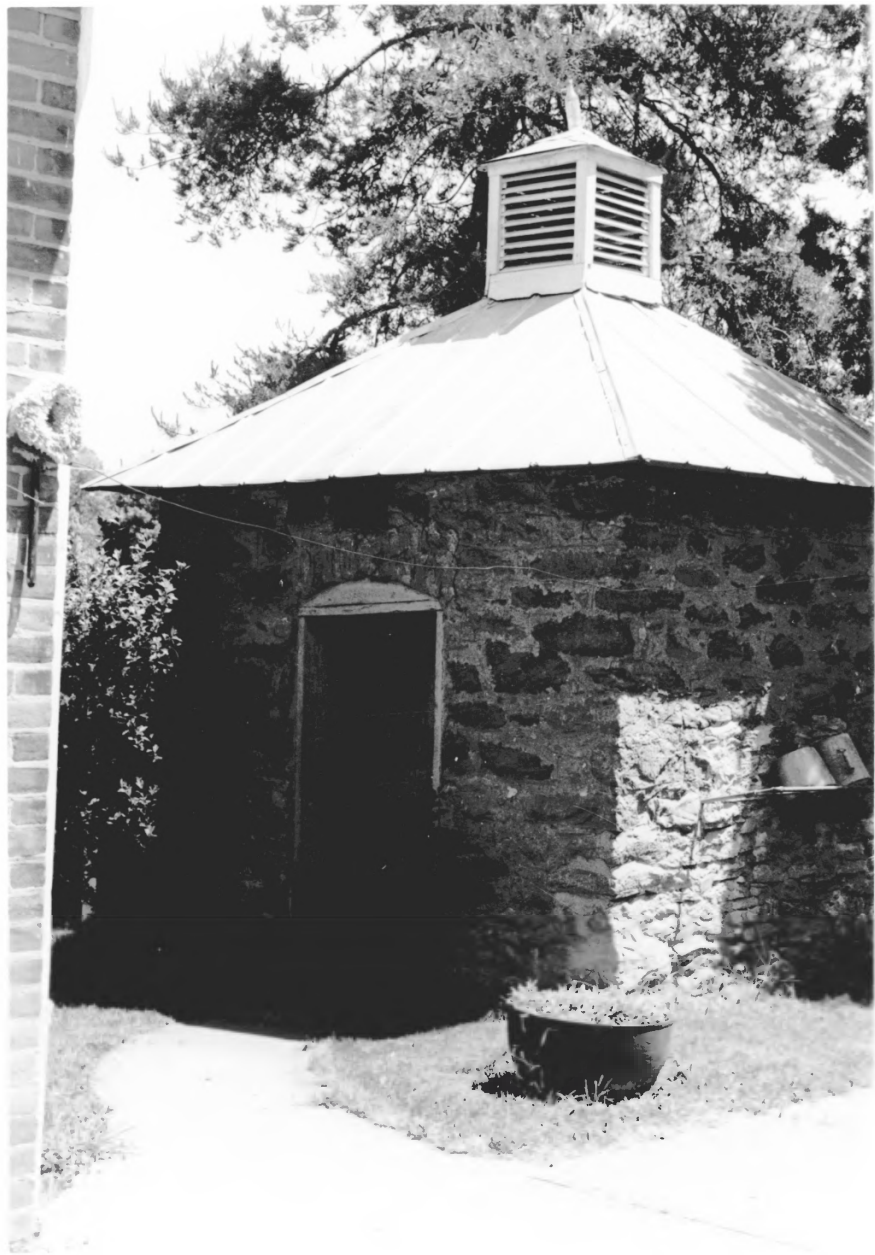




- 1) William Tiemeyer House, GERMAN SETTLEMENT
PROPERTIES FOUR MILE CREEK AREA
- 2) Highway 8, Campbell County, Kentucky
- 3) Stephen C. Gordon
- 4) October 25, 1982
- 5) Kentucky Heritage Council
- 6) Front and northwest elevations, looking
southeast
- 7) Photo #88



- 1) William Tiemeyer House, GERMAN SETTLEMENT
PROPERTIES FOUR MILE CREEK AREA
- 2) Highway 8, Campbell County, Kentucky
- 3) Stephen C. Gordon
- 4) October 25, 1982
- 5) Kentucky Heritage Council
- 6) Northwest and rear elevations, looking NE
- 7) Photo #89



- 1) William Tiemeyer House, GERMAN SETTLEMENT
PROPERTIES FOUR MILE CREEK AREA
- 2) Highway 8, Campbell County, Kentucky
- 3) Stephen C. Gordon
- 4) October 25, 1982
- 5) Kentucky Heritage Council
- 6) Stone smokehouse, looking east
- 7) Photo #90