



DAY PRODUCE Co. BLD. (SUN MOUNTAIN SPORTS)

301 N. 1st W.

MISSOULA Co., MT.

ALLAN MATHEWS - PHOTOGRAPHER

MARCH 1994

NEGATIVE - MT. SHPO - HELENA

SOUTH + EAST ELEVATION OF DAY BLD FROM
CORNER OF WOODY + RAILROAD STREET
(ACROSS TRACKS)

1



LINDSAY FRUIT CO. BLD. (SUN MOUNTAIN SPORTS)

313 N 1ST W. MISSOULA, MT.
MISSOULA CO., MT.

ALLAN MATHEWS, PHOTO

MARCH 1994

NEGATIVE AT MT SHPO - HELENA

SOUTH TOWARD LINDSAY BLD + ORANGE
STREET UNDERPASS

#2



827-837 WOODY MISSOULA, MT

MISSOULA CO., MT

ALLAN MATHEWS-PHOTO

MARCH 1994

NEGATIVE AT MT. SAPO

WEST DOWN N 2ND ST. W.

#3



217-219 + 213 N 2ND ST. W. MISSOULA, MT

MISSOULA CO., MT

ALLAN MATHEWS - PHOTO

MARCH 1994

NEG. AT MT. SHPO - HELENA

LOOKING EAST ON N. 2ND W.

4



200 BLOCK OF N. 1ST ST. W., MISSOULA, MT
MISSOULA CO., MT

ALLAN MATTHEWS - PHOTO
MARCH 1994

NEG. AT MT. SHPO - HELENA

LOOKING WEST ON N 1ST ST. W.
WRIGHT PAPER BLD & DAY PRODUCE BLD.
ON LEFT.

#5



WRIGHT PAPER CO.
CARPENTER PAPER COMPANY

235 N 1ST ST. W. MISSOULA, MT
WRIGHT PAPER CO. BLD (SUN MNT SPORTS)
MISSOULA CO., MT

ALLAN MATHEWS - PHOTO

MARCH 1994

NEG. AT MT. SHPO. - HELENA

LOOKING EAST

#6



301 N. 1ST ST. W., MISSOULA
DAY PRODUCE BLD. (SUN MNT. SPORTS)
MISSOULA CO., MT

ALLAN MATHEWS - PHOTO

MARCH 1994

NEG. AT MT. SHPO - HELENA

LOOKING EAST.

7



STEREO SIGN PRODUCTS

KEIM BLD (STENSRUD) 314 N. 1ST ST. W., MISSOULA, MT
MISSOULA CO., MT

ALLAN MATHEWS - PHOTO

MARCH 1984

NEG AT MT. SHPO - HELENA

LOOKING WEST

#8



HARDESTY BLD. (SUN MOUNT. SPORTS) 309-311 N. 1ST
ST. W.

MISSOULA CO., MT

ALLAN MATHEWS - PHOTO

MARCH 1994

NEG. AT MT. SHPO - HELENA

LOOKING WEST. LINDSAY BLD AT END

9



LINDSAY BLD (SUN MNT. SPORTS) 313 N 1ST. ST.
MISSOULA, MT W.

MISSOULA CO., MT

ALLAN MATHEWS - PHOTO

MARCH 1994

NEG. AT MT. SHPO

LOOKING WEST

10



500 BLOCK OF N, 2ND ST. W., MISSOULA, MT
MISSOULA CO., MT,

ALLAN MATHEWS - PHOTO
MARCH 1994

NEG. AT MT. SHPO - HELENA

LOOKING WEST DOWN N 2ND FROM GRAND
AVE

11



902, 910, 916 GRAND, MISSOULA, MT.

MISSOULA CO., MT.

ALLAN MATHEWS - PHOTO

MARCH 1994

NEG: AT MT. SHPO - HELENA, MT

LOOKING NORTH FROM CORNER OF GRAND x
N. 2ND ST. W.

#12



CORNER OF 617 N. 3RD ST. W., 615, 613 + 609 N. 3RD ST. W.,
MISSOULA, MT

MISSOULA CO., MT

ALLAN MATHEWS - PHOTO

MARCH 1994

NEG. AT. MT. SHPO - HELENA

LOOKING EAST

#13



WHITTIER SCHOOL - WORDEN + PHILLIPS, MISSOULA, MT

MISSOULA CO., MT

ALLAN MATHEWS - PHOTO

MARCH 1994

NEG. AT. MT. SHPO - HELENA

LOOKING WEST

#14



838 N. 5th ST. W., MISSOULA, MT
MISSOULA CO., MT

ALLAN MATHEWS - PHOTO

MARCH 1994

NEG. AT. MT. SHPO - HELENA

LOOKING NORTH

#15



ONE WAY

L-R. 1034, 1028+1022 WOLF, MISSOULA, MT

MISSOULA CO., MT

ALLAN MATHEWS - PHOTO

MARCH 1994

NEG. AT MT. SHPO - HELENA

LOOKING SOUTH FROM CORNER OF WOLF &
N. 4TH ST. W.

#16



500 BLOCK OF N 4TH ST. W., MISSOULA, MT
MISSOULA CO., MT
ALLAN MATHEWS - PHOTO
MARCH 1994
NEG. AT SHPO - HELENA
LOOKING EAST

#17



L-R. 507, 509-11, 513-15, & 517 N. 4TH ST. W.
MISSOULA, MT.

MISSOULA CO., MT

ALLAN MATHEWS - PHOTO

MARCH 1994

NEG. AT MT. SHPO - HELENA

LOOKING EAST

#18



823-825 WOLF, MISSOULA, MT
MISSOULA CO., MT

ALLAN MATHEWS - PHOTO
MARCH 1994

NEG. AT MT. SHPO-HELENA

LOOKING WEST

#19



500 BLOCK OF N 1ST ST. W., MISSOULA, MT
MISSOULA CO., MT

ALLAN MATHEWS - PHOTO
MARCH 1994

NEG. AT MT. SHIPS - HELENA
LOOKING WEST

#20



425 N 1st St. W. + BLOCK EAST. MISSOULA, MT

MISSOULA CO., MT

ALLAN MATHEWS - PHOTO

MARCH 1994

NEG. AT MT. SHPO - HELENA

LOOKING EAST FROM CORNER N1st St. W
+ GRAND

21



L-R 622, 616 + 614 N 2ND ST. W., MISSOULA, MT

MISSOULA CO., MT.

ALLAN MATHEWS - PHOTO

MARCH 1994

NEG. AT MT. SHPO - HELENA

LOOKING EAST

#22



501 N. 2ND ST. W., MISSOULA, MT.
MISSOULA CO., MT

ALLAN MATHEWS - PHOTO

MARCH 1994

NEG. AT. MT. SHPO - HELENA

LOOKING SOUTH

1994 PRESERVATION AWARD

"MOST IMPROVED"

#23

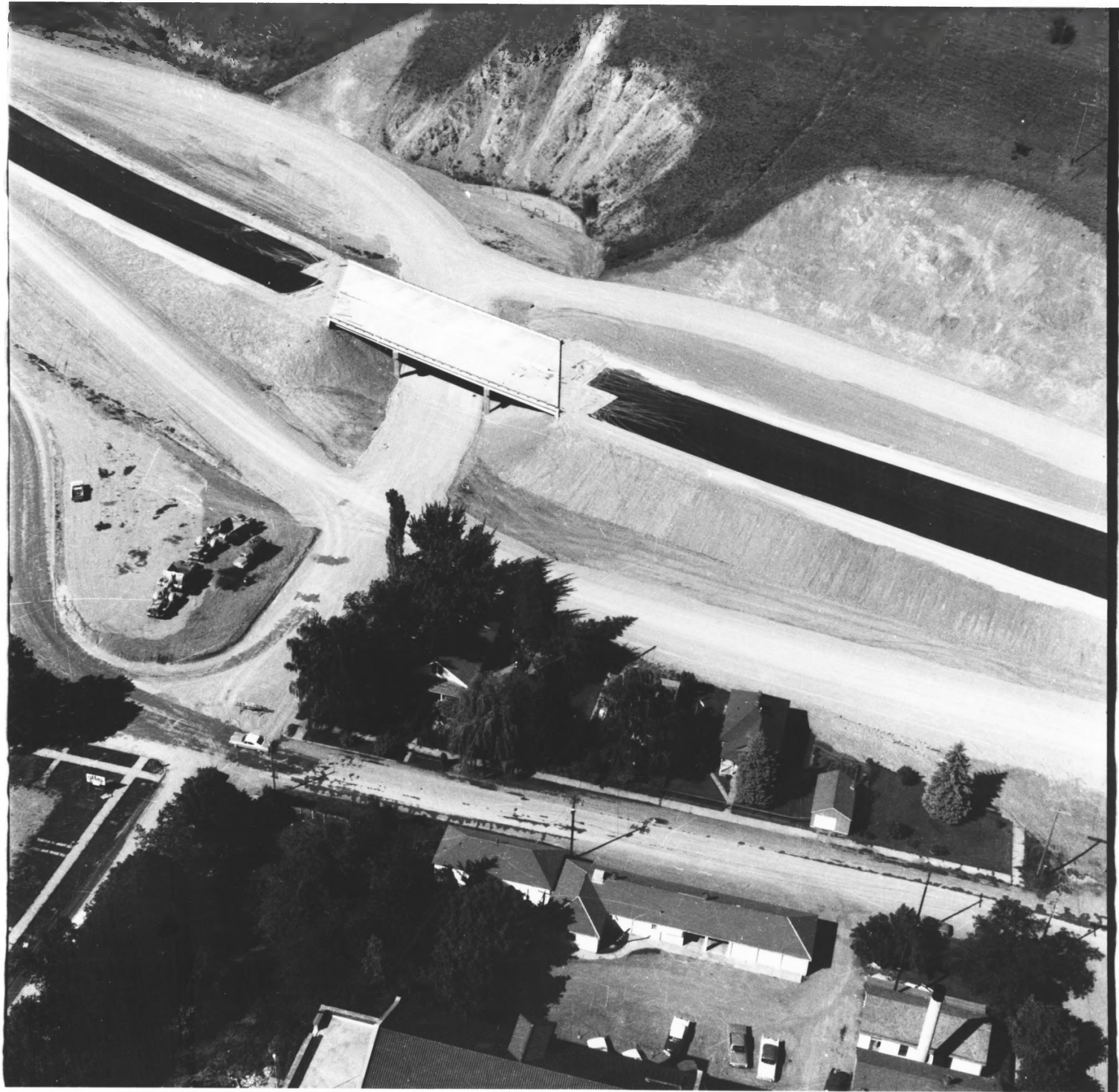


NORTHSIDE MISSOULA RAILROAD HISTORIC DISTRICT
MISSOULA COUNTY, MONTANA

DEMOLITION OF NORTHSIDE HOUSE TO MAKE WAY
FOR INTERSTATE 90, 1964.

HEALY COLLECTION

UNIVERSITY OF MONTANA LIBRARY
MISSOULA, MT



MISSOULA NORTHSIDE RAILROAD HISTORIC DISTRICT
MISSOULA COUNTY, MONTANA

ORANGE STREET INTERCHANGE I-90

1964 (HEALY HOUSE IN TREES NEXT TO ON-RAMP)

HEALY COLLECTION

UNIVERSITY OF MONTANA LIBRARY

MISSOULA, MT