



Cravens House
CHCH - Chickamauga and Chattanooga NMP

View from NE

LCS 07176

Hamilton Co. TN

1993



Cravens House

CHCH - Chickamauga and Chattanooga NMP

View from NW

LCS 07176

Hamilton Co. TN

1993



Orchard Knob, Main Gate
Chickamauga and Chattanooga NMP

Hamilton Co. TN

View from SE

May 1996



Orchard Knob, infantry earthworks
Chickamauga and Chattanooga NMP
Hamilton Co. TN
View from W
August 1996



Road trace S of Kelly House on LaFayette Rd.
Chickamauga and Chattanooga NMP

Walker Co. GA

View from W

August 1996

Kelly Road



Wilder Brigade Monument
Chickamauga and
CHCH Chattanooga NMP

LCS 03285

Walker Co. GA

1992



Batteline Road

LCS 91601

Chickamauga and Chattanooga NMP

Walker Co. GA

Sept. 1995. CLI



← TEXAS MONUMENT

Batteline Road

LCS 91601

Chickamauga and Chattanooga NMP

Walker Co. GA

Sept. 1995. CLI



Bridge at LaFayette Rd., South of VC

Chickamauga and Chattanooga NMP

Walker Co. GA

View from E

April 1996



Vittetoe Road
Chickamauga and Chattanooga NMP
Walker Co. GA
View from W
April 1996



Bridge. Glenn-Viniard at LaFayette, SW
Chickamauga and Chattanooga NMP

Walker Co. GA

View from SE

August 1996



Reed's Bridge Road

LCS 91589

Chickamauga and Chattanooga NMP

Walker Co. GA

View from W

Sept. 1995. CLI



Bridge, Reed's Bridge Road
Chickamauga and Chattanooga NMP
Walker Co. GA
View from S
April 1996



N wall, 3-way culvert on Brotherton Rd.
at Jay's Mill Rd.

Chickamauga and Chattanooga NMP

Walker Co. GA

View from N

August 1996



Swall, 4 box culvert, Glenn-Viniard Rd.

1.1 m from LaFayette Rd.

Chickamauga and Chattanooga NMP

Walker Co. GA

View from SE

August 1996



1897 Arch Culvert, Glenn Kelly Road
Chickamauga and Chattanooga NMP

Walker Co. GA

View from E

April 1996



1897 Culvert, Glenn-Kelly Road
Chickamauga and Chattanooga NMP
Walker Co. GA
View from W
April 1996



E wall, culvert at intersection of Jay's Mill
and Alexander Bridge Rd., 2.2 m from
LaFayette Rd.

Chickamauga and Chattanooga NMP

Walker Co. GA

View from E

August 1996



E wall, culvert, Mullis-Villetoe Rd. at
McFarland Gap Rd.

Chickamauga and Chattahoochee NMP
Walker Co. GA

View from E

August 1996



E wall culvert on Jay's Mill Road
.9 m from Reed's Bridge Rd.
Chickamauga and Chattanooga NMP
Walker Co. GA
View from E
August 1996



Superintendent's Residence

LCS 07175

Chickamauga and Chattanooga NMP

Walker Co., GA

View from W

1993



Superintendent's Residence

LCS 07175

Chickamauga and Chattanooga NMP

Walker Co. GA

View from SE

1993



Superintendent's Residence

LCS 07175

Chickamauga and Chattanooga NMP

Walker Co., GA

View from S

1993



Superintendent's Residence

LCS 07175

Chickamauga and Chattanooga NMP

Walker Co. GA

View from NW

1993



Ranger's Residence, north of Dyer Rd.

~~Chickamauga~~ Chickamauga and Chattanooga NMP

LCS 07177

View from NE

Walker Co. GA

1993



Ranger's Residence, north of Dyer Rd.

~~Walker~~ Chickamauga and Chattanooga NMP

LCS 07177

view from SW

Walker Co. GA

(993



Elisha Kelley House

~~CHICKAMAUGA~~ Chickamauga and Chattanooga NMP

LCS 00182

Walker Co. GA

1993



Elisha Kelley House

~~at~~ Chickamauga and Chattanooga NMP

LCS 00182

Walker Co. GA

1993

A black and white photograph showing a stone wall in the foreground. Behind the wall is a grassy slope with a dark sign. The sign has the text 'DINO BASKETBALL' at the top, followed by 'A University and Community Center' and 'DINO BASKETBALL'. The background is filled with trees and a building. A utility pole is visible on the right side of the image.

DINO BASKETBALL
A University and Community Center
DINO BASKETBALL

Ohio Reservation Wall

Chickamauga and Chattanooga NMP

Hamilton Co. TN

View from S

August 1996

Turchin Reservation, Cast iron Marker

LCS 91615

Chickamauga and Chattanooga NMP

Hamilton Co. TN

View from E

Sept. 1995 - CLI



Turchin Reservation, railing detail
Chickamauga and Chattanooga NMP
Hamilton Co. TN
View from N
August 1996



Turchin Reservation, Wall
Chickamauga and Chattanooga NMP
Hamilton Co. TN
View from W
August 1996



DeLong Reservation, wall and buttress
Chickamauga and Chattanooga NMP
Hamilton Co. TN
View from S
August 1996

A black and white photograph showing a stone wall with two pillars in the background. In the foreground, a dirt path leads towards the wall. To the right, a dark sign with white text is visible. The sign reads: "JAMES O. EASTMAN RESERVATION", "Chattanooga and Chattanooga", "National Military Park", "United States Department of the Interior", and "National Park Service".

JAMES O. EASTMAN RESERVATION
Chattanooga and Chattanooga
National Military Park
United States Department of the Interior
National Park Service

De Long Reservation, curbing
Chickamauga and Chattanooga NMP

Hamilton Co. TN

View from N

August 1996



DeLong Reservation, stone deterioration
Chickamauga and Chattanooga NMP
Hamilton Co. TN
View from S
August 1996

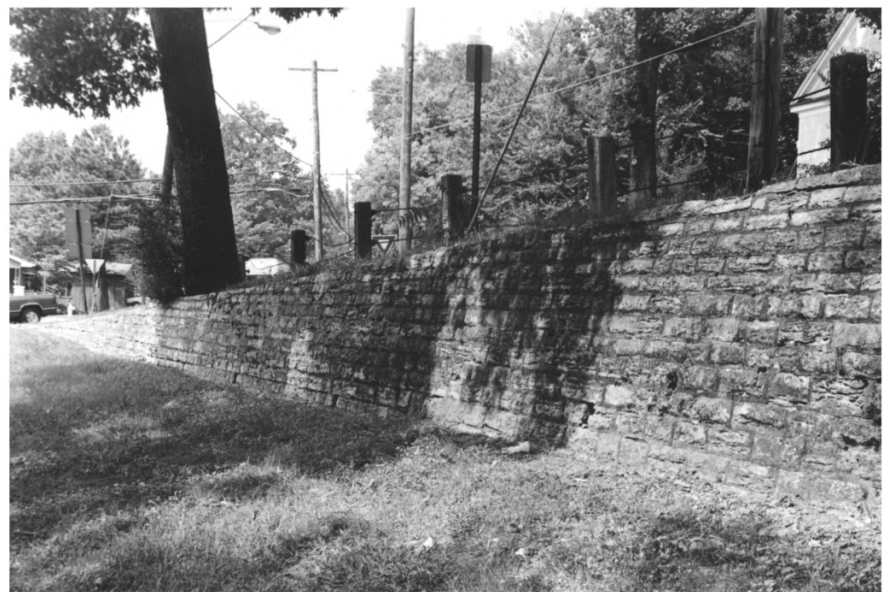


73rd Pennsylvania Reservation
Chickamauga and Chattanooga NMP

Hamilton Co. TN

View from W

Sept. 1995 CLI



73rd Pennsylvania Reservation wall
Chickamauga and Chattanooga NMP
Hamilton Co. TN
View from SW
August 1996



George Brotherton House
~~Walker~~ Chickamauga and Chattahoochee NMP

LCS 00181

Walker Co. GA

1993



George Brotherton House

~~at~~ Chickamauga and Chattanooga NMP

LCS 00181

Walker Co. GA

1993



Sherman Reservoir Earthworks
Chickamauga and Chattanooga NMP
Hamilton Co. TN
View from W
August 1996



Sherman Reservation,
Chickamauga and Chattanooga NMP
Hamilton Co. TN
View from South
Sept. 1995 CLT



Sherman Reservation,
Chickamauga and Chattanooga NMP

Hamilton Co., TN

View from N

Sept. 1995 CLI



Vegetation Boundaries, Sherman Reservation

Cast iron tablet marker

LCS 91615

Chickamauga and Chattanooga NMP

Hamilton Co., TN

Sept. 1995 CLI



Orchard Knob, drainage ditch
Chickamauga and Chattanooga NMP
Hamilton Co. TN
View from SE
August 1996



Orchard Knob, Road from Gate to top of hill
Chickamauga and Chattanooga NMP
Hamilton Co. TN
View from SE
May 1996



Orchard Knob, Ivy St. Wall

Chickamauga and Chattanooga NMP

Hamilton Co. TN

View from

May 1996



Orchard Knob Gate and Fence
Chickamauga and Chattanooga NMP
Hamilton Co. TN
View from
May 1996



Orchard Knob, Main Gate
Chickamauga and Chattanooga NMP
Hamilton Co. TN
View from NW
May 1996



Orchard Knob, artillery earthworks
Chickamauga and Chattanooga NMP
Hamilton Co. TN
View from SW
August 1996



Snodgrass House

~~at~~ Chickamauga and Chattanooga NMP

LCS 00183

Walker Co. GA

1993



Comfort Station, Point Park

~~Chickamauga~~ Chickamauga and Chattanooga NMP

LCS 91608

Hamilton Co. TN

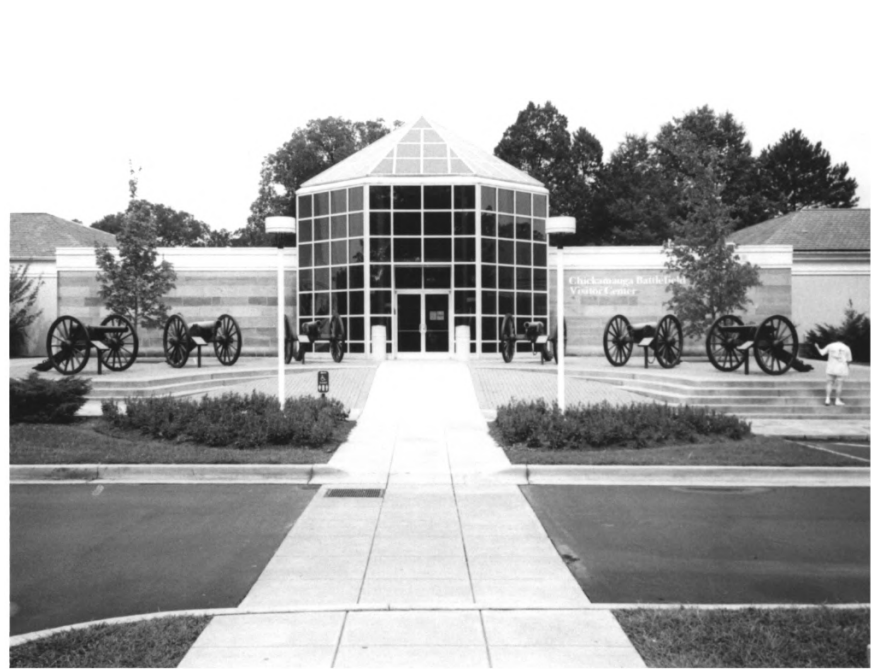
View from NE

1993



Chickamauga and Chattanooga NMP
Visitor Center / Admin. Building.
Original Structure

Chickamauga and Chattanooga NMP
Walker Co. GA
View from E
Sept. 1995. CLI



Chickamauga and Chattanooga NMP
Visitor Center . modern addition

Chickamauga and Chattanooga NMP

Walker Co. GA

View from S

Sept. 1995 . CLI



Point Park Entrance Gate
~~at~~ Chickamauga and Chattanooga NMP

LCS 03295

Hamilton Co. TN

View from S

1993



Point Park Entrance, from inside
~~at~~ Chickamauga and Chattanooga NMP

LCS 03295
Hamilton Co. TN
View from N
1993



Point Park S. Wall

CHCH ^{Chickamauga} Chattanooga NMP

MT - 359B

HS -

LCS - 91217

Map - No #

Hamilton Co. TN



Point Park Fence/Wall

~~Chickamauga~~ Chickamauga and Chattanooga NMP

LCS 91217

Hamilton Co. TN

View from N

1993



Point Park Ranger Quarters
Chickamauga and Chattahoochee NMP
Hamilton Co. TN
View from E
May 1996



Ochs Museum
CHCH Chickamauga and
Chattanooga NMP

MT- 359C

HS-

LCS- 91218

Map- No #

Hamilton Co. TN



Ochs Memorial Museum
~~at~~ Chickamauga and Chattanooga NMP
North Facade

November 1992
Hamilton Co. TN
LCS 91218



Ochs Observatory - Museum

LCS 91218

Chickamauga and Chattanooga NMP

Hamilton Co. TN

1993



Ochs Observatory - Museum

LCS 91218

Chickamauga and Chattanooga NMP

Hamilton Co. TN

1993



Ochs Observatory - Museum

LCS 91218

Chickamauga and Chattanooga NMP

Hamilton Co. TN

1993



Ochs Observatory - Museum

LCS 91218

Chickamauga and Chattanooga NMP

Hamilton Co. TN

1993



Ochs Observatory - Museum

LCS 91218

Chickamauga and Chattanooga NMP

Hamilton Co. TN

1993



Ochs Observatory - Museum

LCS 91218

Chickamauga and Chattanooga NMP

Hamilton Co. TN

1993



Ochs Observatory - Museum

LCS 91218

Chickamauga and Chattanooga NMP

~~Walker Co. GA~~ Hamilton Co. TN

1993



Cravens House, west side
~~corner~~ Chickamauga and Chattanooga NMP

LC5 07176

View from East

Hamilton Co. TN

1993



Cravens House

~~at~~ Chickamauga and Chattanooga NMP

LCS 07176

View from NW

Hamilton Co. TN

1993



Cravens House

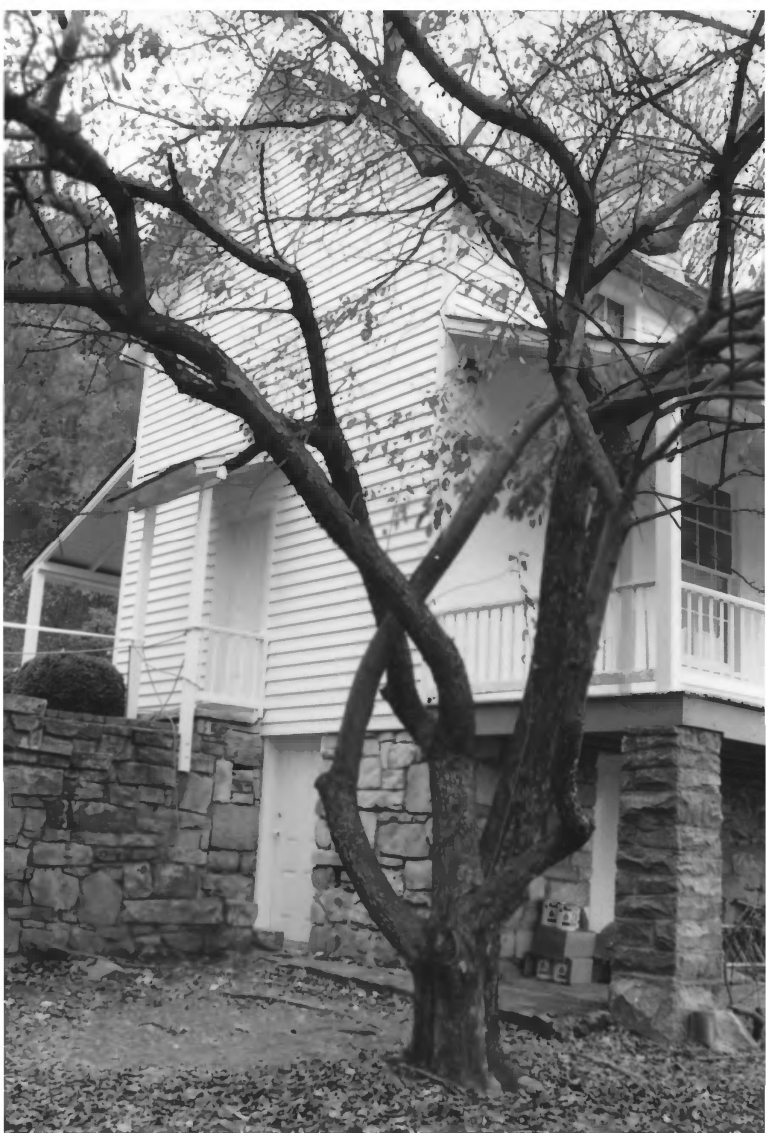
~~Chickamauga~~ Chickamauga and Chattahoochee NMP

View from NE

LES 07176

Hamilton Co. TN

1993



Cravens House

~~ETCH~~

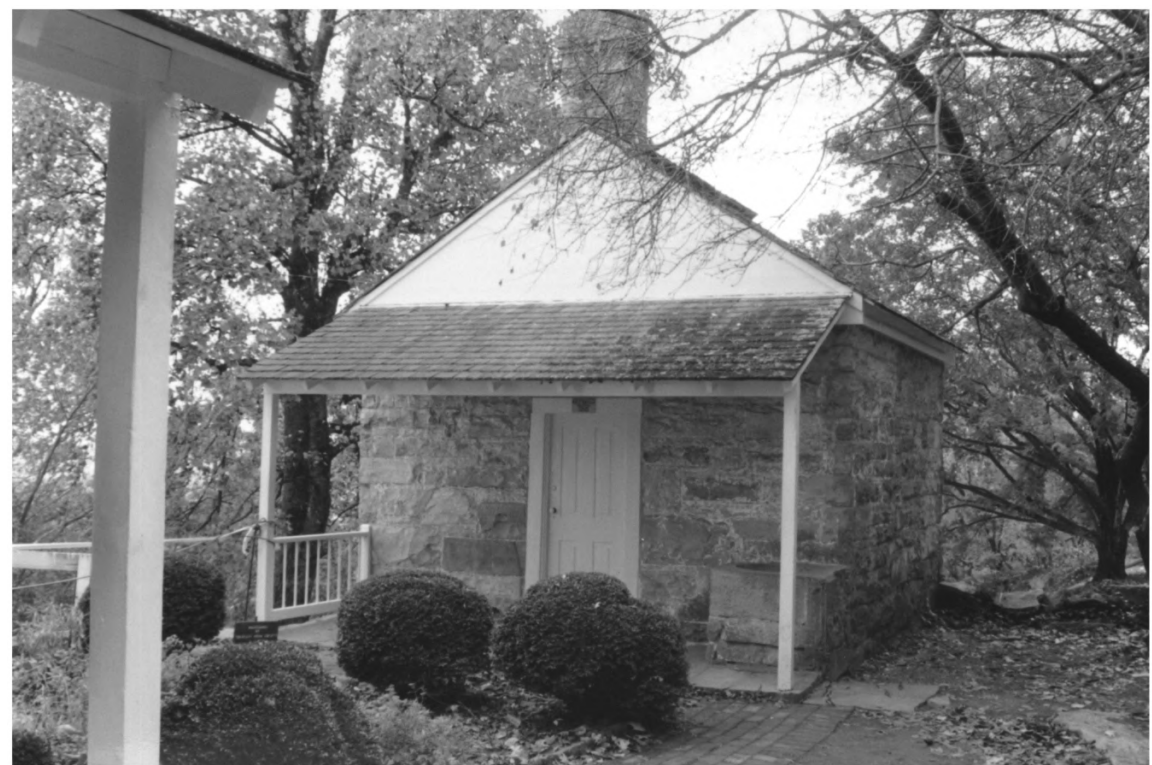
View from SE

LCS 07176

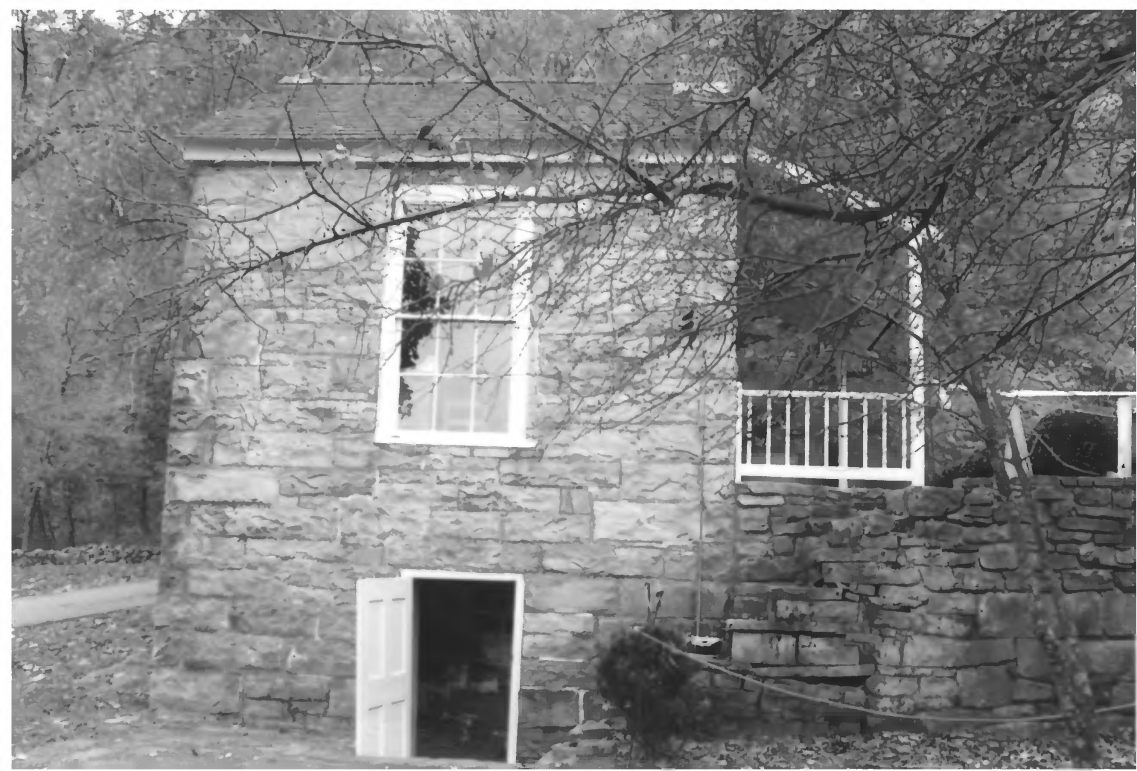
Chickamauga and Chattanooga NMP

Hamilton Co. TN

1993



Craven's ~~Sept 1993~~ Kitchen / Dairy
~~Chickamauga~~ Chickamauga and Chattanooga NMP
View from North
LCS 91219
Hamilton Co. TN
1993



Cravens ~~Shelby~~ ~~Hick~~ Kitchen/Dairy
~~Chickamauga~~ Chickamauga and Chattanooga NMP
View from East

LCS 91219

Hamilton Co. TN

1993



Cravens ~~Ability~~ ~~Old~~ Kitchen / Dairy
~~View~~ Chickamauga and Chattanooga NMP
View from west
LCS 91219
Hamilton Co. TN
1993



Retaining Wall, Crawens House

View from NE

~~QUINCY~~ Chickamauga and Chattanooga NMP

LCS 91605

Hamilton Co. TN

Dec. 1997



Ohio Monument Stairs, Cravens House
View from NE
~~Chickamauga~~ Chickamauga and Chattanooga NMP
LCS 91653
Hamilton Co. TN
Dec. 1997



Parking area stairs, Crawens House
~~Chickamauga~~ Chickamauga and Chattahoochee NMP

View from NE

LCS 91648

Hamilton Co. TN

Dec. 1997



Parking area retaining wall, Crawens House
View from S
~~about~~ Chickamauga and Chattanooga NMP
LCS 91648
Hamilton Co. TN
Dec. 1997



Ohio Monument Stairs, Cravens
House

View from E

~~Chickamauga~~ Chickamauga and Chattanooga
NMP

LCS 91653

Hamilton Co. TN

Dec. 1997



IOWA STATE MONUMENT - ROSSVILLE GAP

Rossville, GA

Photographer - Robert Guthrie

Date - 10/17/83

Negative - Chick-Chatt NMP

View North, U.S. Highway 27, Left and Right



Iowa State Monument

Chickamuaga Battlefield

LaFayette Road, Rossville, TN

National park Service Dec 1974

Neg filed at Chick/Chat. NMP

View looking west.



Georgia State Monument, Chickamauga BF
Chickamauga Chattanooga Nat. Mil Park
National Park Service Dec 1974
Chickamauga & Chattanooga NMP (Neg)
Looking east with LaFayette Road in
foreground.

Georgia State Monument
Structure 637

Poc Field

Map 132

DEAD
END

GEORGIA CAVALRY MONUMENT

Old LaFayette Road (U.S. 27)
Fort Oglethorpe, GA

Photographer - Robert Guthrie

Date - 10/17/83

Negative - Chick-Chatt NMP

View - Northwest - Old LaFayette Road in
Foreground



HEADQUARTERS

1945

276

H. Hill Camp

map 27

Lt. Gen. Daniel B. Hill HQs Monument
Chickamauga Battlefield, Chickamauga &
Chattanooga NMP. GA

National Park Service, Dec. 1974

Neg located at Chick/Chatt NMP

View looking north. HQs mon is $\frac{1}{2}$ mile
east of the Helm Monument

H. Hill Camp, Lt. Gen. Daniel B. Hill
Map 27

SILVERMAN 1406

1/2 mile east of Helm mon

CHICK-CHATT
NMP

ILLINOIS

22ND INFANTRY.

3RD BRIGADE-BRADLEY,

3RD DIVISION-SHERIDAN,

20TH ARMY CORPS-McCOOK.

376

771 22ND INF

251

Vinard field 702
Stratons

CHATT.
NMP

Twenty-Second Illinois Inf. Monument
Chickamauga Battlefield, Chickamauga
& Chattanooga NMP Fort Oglethorpe, GA
National Park Service 1974
Neg filed at Chick/Chatt NMP
Looking east Mon in Vinard Field

ILLINOIS

104TH INFANTRY
J. BEATTY'S BRIGADE
DURING THE NIGHT 19-20 SEPTEMBER 18

442

CHICKAMAUGA BATTLEFIELD, GA

104th Illinois Infantry

Photographer - William Whiteside

Date - 1975

Negative - Chick-Chatt NMP

View - South

CAPT. H. S. SPEED'S BATTERY A.
1861 TO 1865.
1ST. OHIO LIGHT ARTILLERY.

ROLL OF HONOR
OF
CAPT. H. S. SPEED'S BATTERY A.
1ST. OHIO LIGHT ARTILLERY.
1861 TO 1865.
KILLED IN ACTION
AT THE BATTLE OF
SHILOH, APRIL 4, 1862.
BY
WILLIAM W. WILKINSON
1865

WILKINSON'S BRIGADE, JOHNSON'S DIVISION
20TH. ARMY CORPS.

96

CHICKAMAUGA BATTLEFIELD, GA

Battery A, 1st Ohio

Photographer - William Whiteside

Date - 1975

Negative - Chick-Chatt NMP

View - North

CHICKAMAUGA BATTLEFIELD, GA

18th Indiana Battery

Photographer - William Whiteside

Date - 1975

Negative - Chick-Chatt NMP

View - Southeast



2ND. OHIO INFANTRY,
SCRIBNER'S BRIGADE, BAIRD'S DIVISION,
14TH ARMY CORPS.

132

Second Ohio Infantry Monument

Battleline Road near Kelly Field, Chick

Battlefield

Fort Oglethorpe, GA. NPS, Dec. 1974

Neg located at Chick/Chatt NMP

View looking west.



CHICKAMAUGA BATTLEFIELD, GA

Brotherton Cabin

Photographer - Robert Guthrie

Date - 10/17/83

Negative - Chick-Chatt NMP

View - Northwest by North, U.S. Highway 27
in foreground



MISSIONARY RIDGE

Chattanooga, TN

Photographer - Robert L. Guthrie

Date - 10/17/83

Negative - Chick-Chatt NMP

View - West - Garrity's Alabama Battery located
20 North Crest Road, Chattanooga, Tennessee -
Private Road



MISSIONARY RIDGE

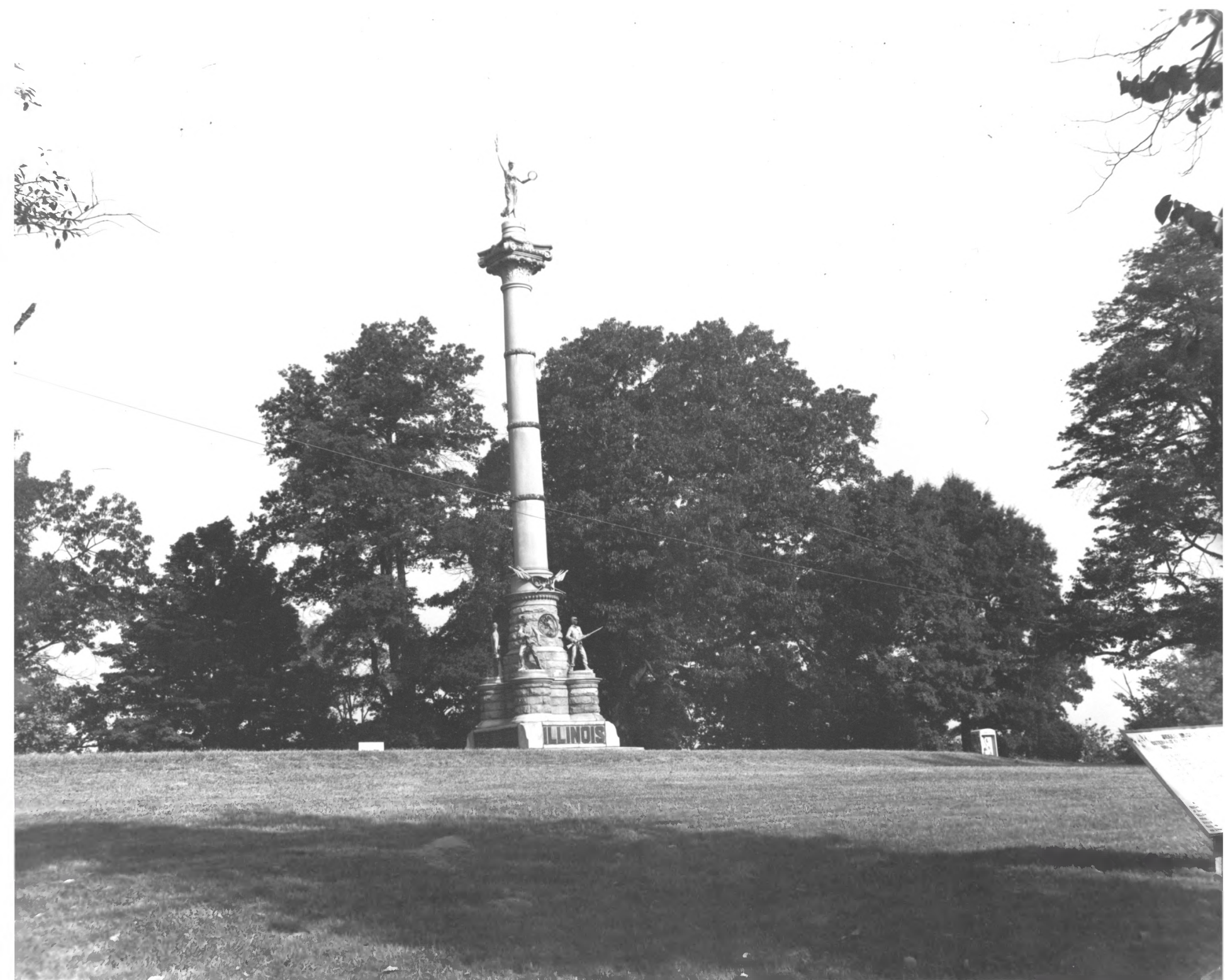
Chattanooga, TN

Photographer - Robert Guthrie

Date - 10/17/83

Negative - Chick-Chatt NMP

View - West - Mebane's Tennessee Battery in
front of house.



ILLINOIS

BRAGG RESERVATION - MISSIONARY RIDGE

Chattanooga, TN

Photographer - Robert Guthrie

Date - 10/17/83

Negative - Chick-Chatt NMP

View - Northwest - Illinois State Monument -
97th Ohio to the Right



SHERMAN RESERVATION

Chattanooga, TN

Swett's Mississippi Battery - Background

Photographer - Robert Guthrie

Date - 10/17/83

Negative - Chick-Chatt NMP

View - South by Southwest



SHERMAN RESERVATION

Chattanooga, TN

Photographer - Robert Guthrie

Date - 10/17/83

Negative - Chick-Chatt NMP

View - Iowa State Monument, Illinois Regimental
Monument - Right

STOP



ORCHARD KNOB RESERVATION

Chattanooga, TN

Photographer - Robert Guthrie

Date - 10/17/83

Negative - Chick-Chatt NMP

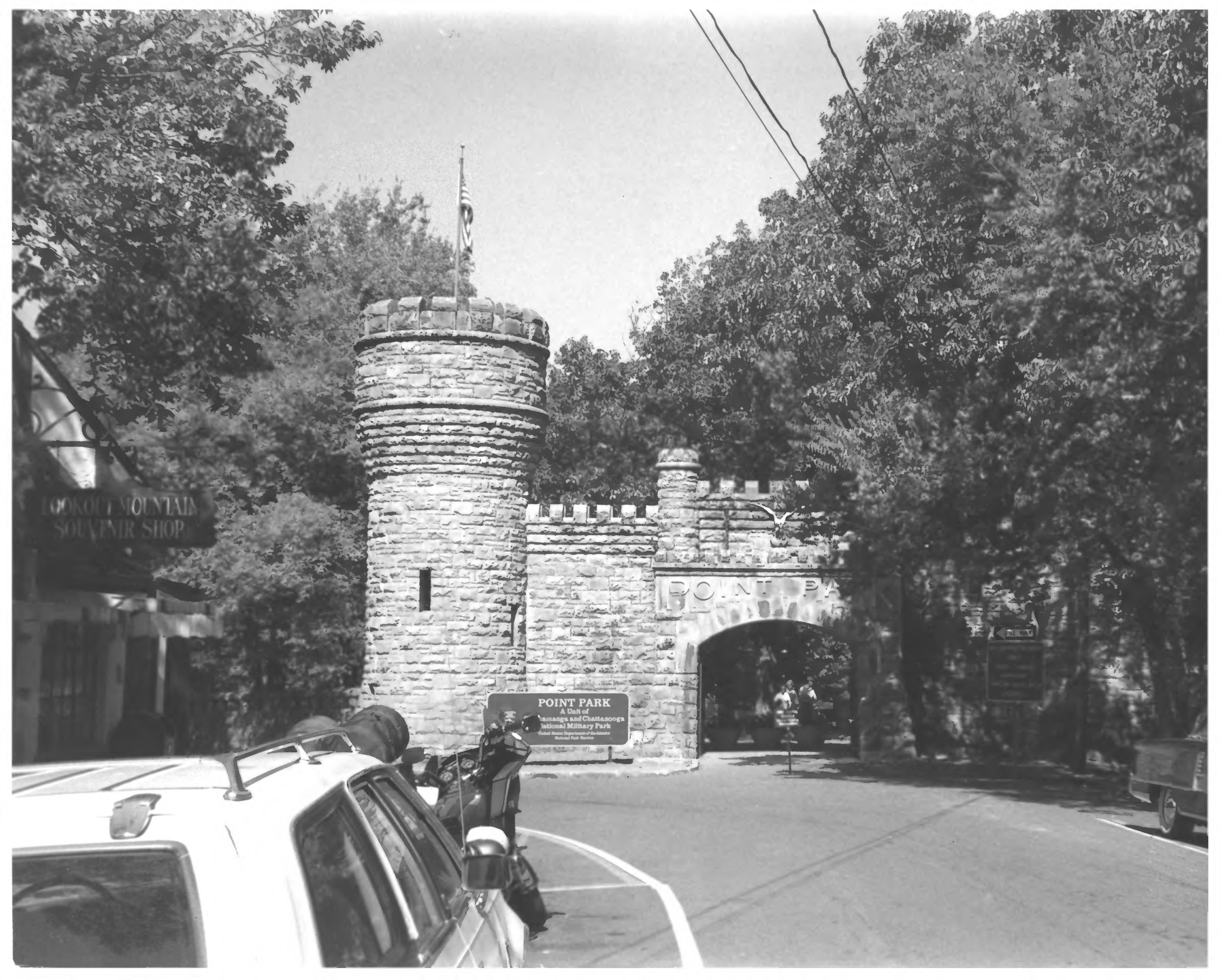
View - North - Representative Regimental
Monuments - 1st Michigan Engineers - Right -
Knapps Pa. Battery - Last Monument on Left -
Chattanooga City Street, foreground.



Wisconsin State Mon. Orchard Knob
Chattanooga Battlefield Chickamauga &
Chattanooga NMP Chattanooga, TN
Dec. 1974 Neg located Chick/Chatt NMP
View looking west



Snodgrass Cabin near Snodgrass Hill
Chickamauga Battlefield, Chickamauga &
Chattanooga NMP, GA. April 1972
Neg filed at Chick/Chatt NMP
Looking west showing east side of
cabin.



LOOKOUT MOUNTAIN
SOUVENIR SHOP

POINT PARK

POINT PARK
A Unit of
Chatahoochee and Chattahoochee
National Military Park
United States Department of the Interior
National Park Service

NEWBY

Lookout Mountain, TN


POINT PARK

Photographer - Robert Guthrie

Date - 10/17/83

Negative - Chick-Chatt NMP

View - North - Entrance to Point Park -
Army Corps of Engineers Insignia Used as
Entrance



GARRITY'S ALABAMA BATTERY
TWO 10 PDR. PARROTTS, TWO 12 PDR. M
MAJ. ALFRED R. COURTNEY'S ARTILLERY
HINDMAN'S DIVISION
Nov. 1863.
CAPT. JAMES GARRITY
1ST LIEUT. PHILIP V
1ST LIEUT. MAYNARD
2ND LIEUT. HENRY

THE SECTION OF PARROTT GUNS OCCUPIED
PREVIOUS TO THE BATTLE OF THE 24TH AN
ENEMY'S WAGON TRAINS MOCCASIN POINT
RIDGE. ABOUT MIDNIGHT OF NOV. 23
ORCHARD KNOB THIS SECTION WAS
COMMANDING THE DIVISION WHICH

LOOKOUT MOUNTAIN, TN

POINT PARK

Photographer - Robert Guthrie

Date - 10/17/83

Negative - Chick-Chatt NMP

View - Northeast - Chattanooga in background

CONFEDERATE FORCES-BATTLE OF LOOKOUT.

NOV. 24th, 1862.

THE NIGHT BEFORE THE BATTLE GEN. STEVENSON WAS ASSIGNED TO COMMAND THE CONFEDERATE LINE FROM CHATTANOOGA CREEK TO THE EXTREME LEFT ON LOOKOUT MOUNTAIN, A DISTANCE OF 12 MILES. STEVENSON'S DIVISION, OF BROWN'S CORPS, AND PETTUS' BRIGADE THEN OCCUPIED THE SUMMIT AND ONEATHAM'S DIVISION OF JACKSON'S CORPS (GEN. J.C. WILKINSON COMMANDING) AND CUMMING'S DIVISION WERE ASSIGNED TO THE LINE BETWEEN THE CREEK AND THE BASE OF THE MOUNTAIN FROM WHICH WALKER'S DIVISION HAD BEEN WITHDRAWN ON THE 23d. AT NOON THE 19th GEN. PETTUS, WITH THREE REGIMENTS OF HIS BRIGADE, WAS SENT TO REINFORCE WALTHALL AT THE CHAVENS HOUSE. THE TOP OF THE MOUNTAIN WAS THEREAFTER OCCUPIED BY BROWN'S BRIGADE, TWO REGIMENTS OF PETTUS, AND DONOHUE'S BATTERY OF FOUR NAPOLEONS. TWO REGIMENTS OF BROWN'S BRIGADE HELD POWELL'S AND NICKAJACK'S TRAILS, RESPECTIVELY 7 AND 10 MILES FROM THE POINT. BEYOND THESE TRAILS A SMALL CAVALRY FORCE OPERATED ABOUT JOHNSON'S CROOK AND STEVEN'S GAP. TWO GUNS OF THE BATTERY WERE STATIONED NEAR THE POINT, AND TWO OTHERS WERE HELD IN RESERVE BETWEEN THE POINT AND THE LINE OF DEFENSE TO THE SOUTH. INFANTRY WAS DISPERSED ALONG THE CRESTS OF THE BLUFFS FIRING AS THE FOG CAME OFF SUDDENLY, AND ROLLING DOWN ROCKS. AT 7 P. M. ORDERS WERE GIVEN TO WITHDRAW FROM THE SUMMIT. AT 10 O'CLOCK THE TROOPS STATIONED THERE HAD CROSSED CHATTANOOGA CREEK. AT 2 A. M. OF THE 25th THE FORCES ON THE CHAVENS HOUSE PLATEAU RETIRED, THE JOINT FORCES PROCEEDING UNDISTURBED TO MISSIONARY RIDGE.

OCCUPATION OF THE SUMMIT OF LOOKOUT.

NOV. 25th, 1862.

NO UNION TROOPS REACHED THE TOP OF THE MOUNTAIN DURING THE BATTLE OF LOOKOUT. THE CONFEDERATES BEGAN TO WITHDRAW FROM THE SUMMIT AT 7 P. M. OF THE 24th, AND COMPLETED THE RETIREMENT ABOUT 9 O'CLOCK, AND AT 10 P. M. HAD CROSSED CHATTANOOGA CREEK ON THEIR WAY TO MISSIONARY RIDGE. EARLY NEXT MORNING GEN. WHITAKER, COMMANDING BRIGADE IN ORPVT'S DIVISION, HIS LINE BEING THEN IN THE VICINITY OF THE CHAVENS HOUSE, CALLED FOR VOLUNTEERS FROM THE 8th KENTUCKY TO SCALE THE PALISADES AT THE POINT OF THE MOUNTAIN. THE FOLLOWING RESPONDED: CAPT. JOHN WILSON, Co. C; SERGT. HARRIS M. DAVIS, AND PRIVATE JOEL BRADLEY, Co. I. THEY GAINED THE SUMMIT UNOPPOSED, AND AT SUNRISE DISPLAYED THE COLORS OF THE REGIMENT IN THE SIGHT OF BOTH ARMIES. THE MORNING BEING UNUSUALLY BRIGHT AND CLEAR IT GAVE NOTICE TO BOTH OF THE RESULT OF THE BATTLE OF THE DAY AND NIGHT BEFORE. THE 8th KENTUCKY INFANTRY, COL. SIDNEY M. BARNES, QUICKLY FOLLOWED, AND ADVANCED TO SUMMERTOWN, FINDING THE MOUNTAIN EVACUATED. THE 96th ILLINOIS INFANTRY, COL. THOS. E. CHAMPION, FOLLOWED THE 8th KENTUCKY. UPON THE ADVANCE OF GEN. HOOKER'S FORCES TOWARDS ROSSVILLE DURING THE FORENOON OF THE 25th FOR THE ATTACK ON MISSIONARY RIDGE, THESE TWO REGIMENTS WERE LEFT TO HOLD THE SUMMIT OF THE MOUNTAIN, AND OCCUPIED THE POSITION UNTIL DEC. 28.

CONF

THE
MOUNTAIN
HAS
BEEN
ITS
W
THE

CONF
THE
MOUNTAIN
HAS
BEEN
ITS
W
THE

POINT PARK

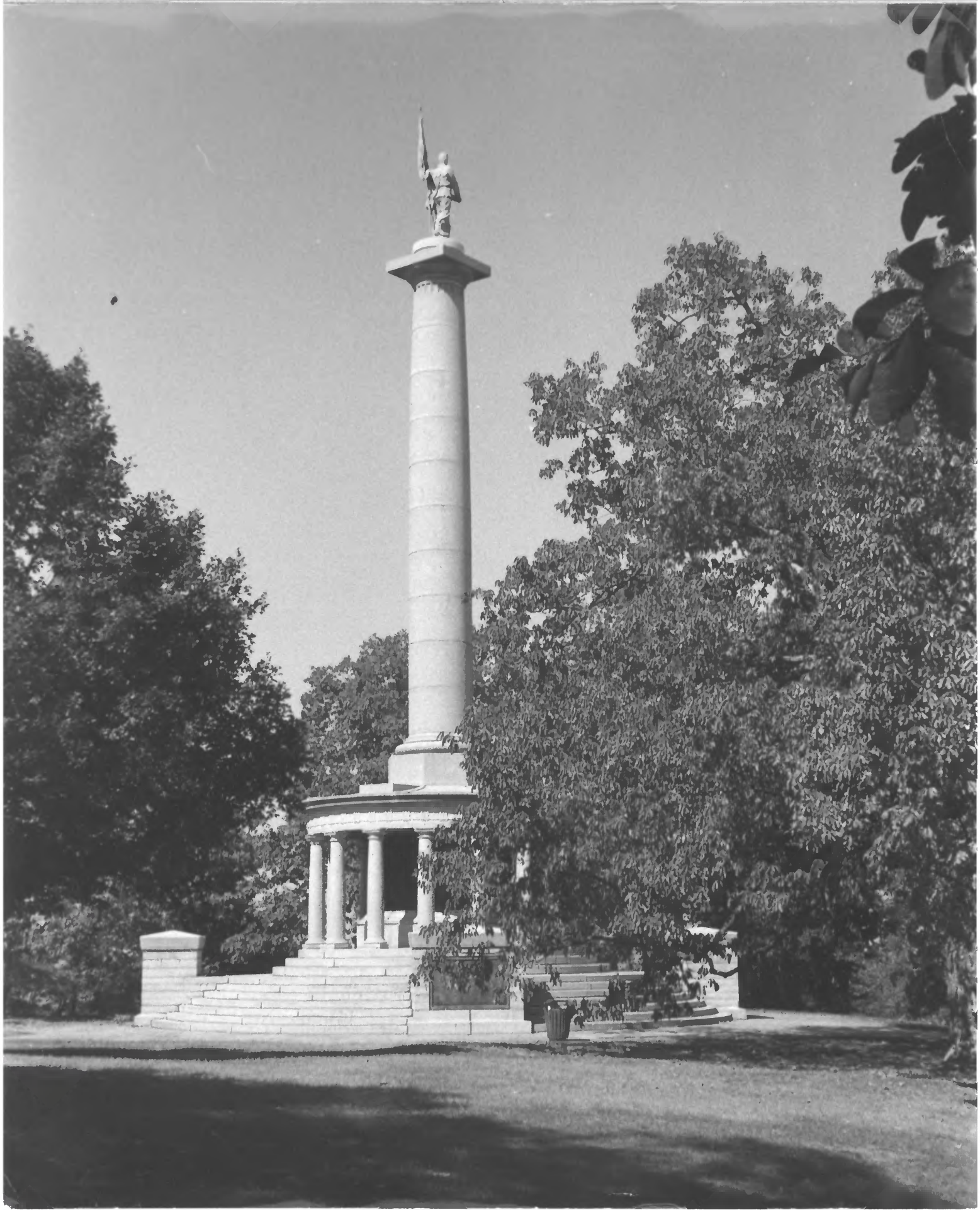
Lookout Mountain, TN

Photographer - Robert Guthrie

Date - 10/17/83

Negative - Chick-Chatt NMP

View - North - Chattanooga, Tennessee in
background



POINT PARK

Lookout Mountain, TN

Photographer - Robert Guthrie

Date - 10/17/83

Negative - Chick-Chatt NMP

View - Northwest - New York Peace Memorial -
Highest monument in park 95 feet



Lookout Mountain, TN

POINT PARK

Photographer - Robert Guthrie

Date - 10/17/83

Negative - Chick-Chatt NMP

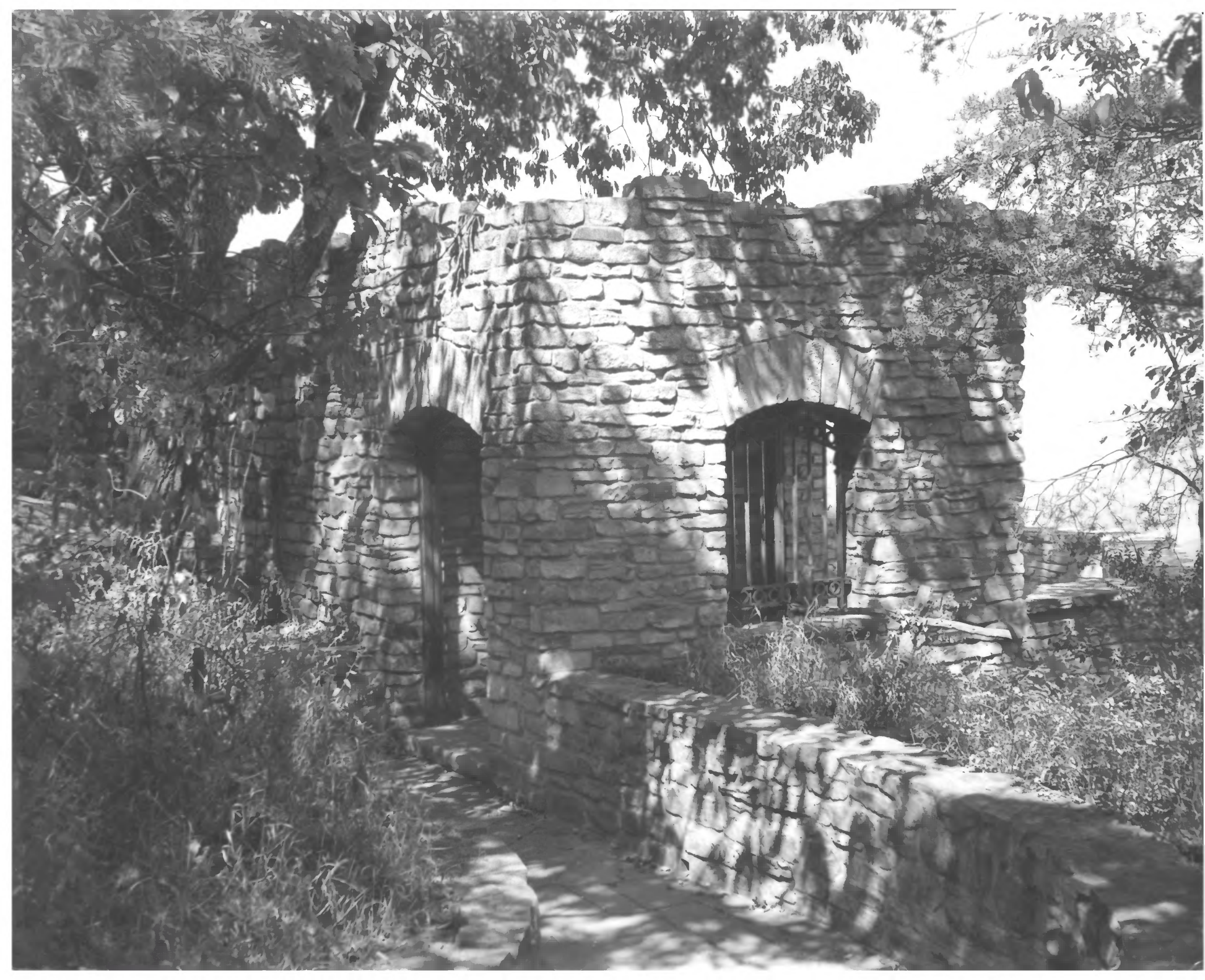
View - North - Talus slope of Lookout Mountain -

Cravens House in Center - Ohio Monument,

Right; New York Monument - Left;

Iowa Monument, north of house;

Tennessee River in background



OCHS MUSEUM - POINT PARK

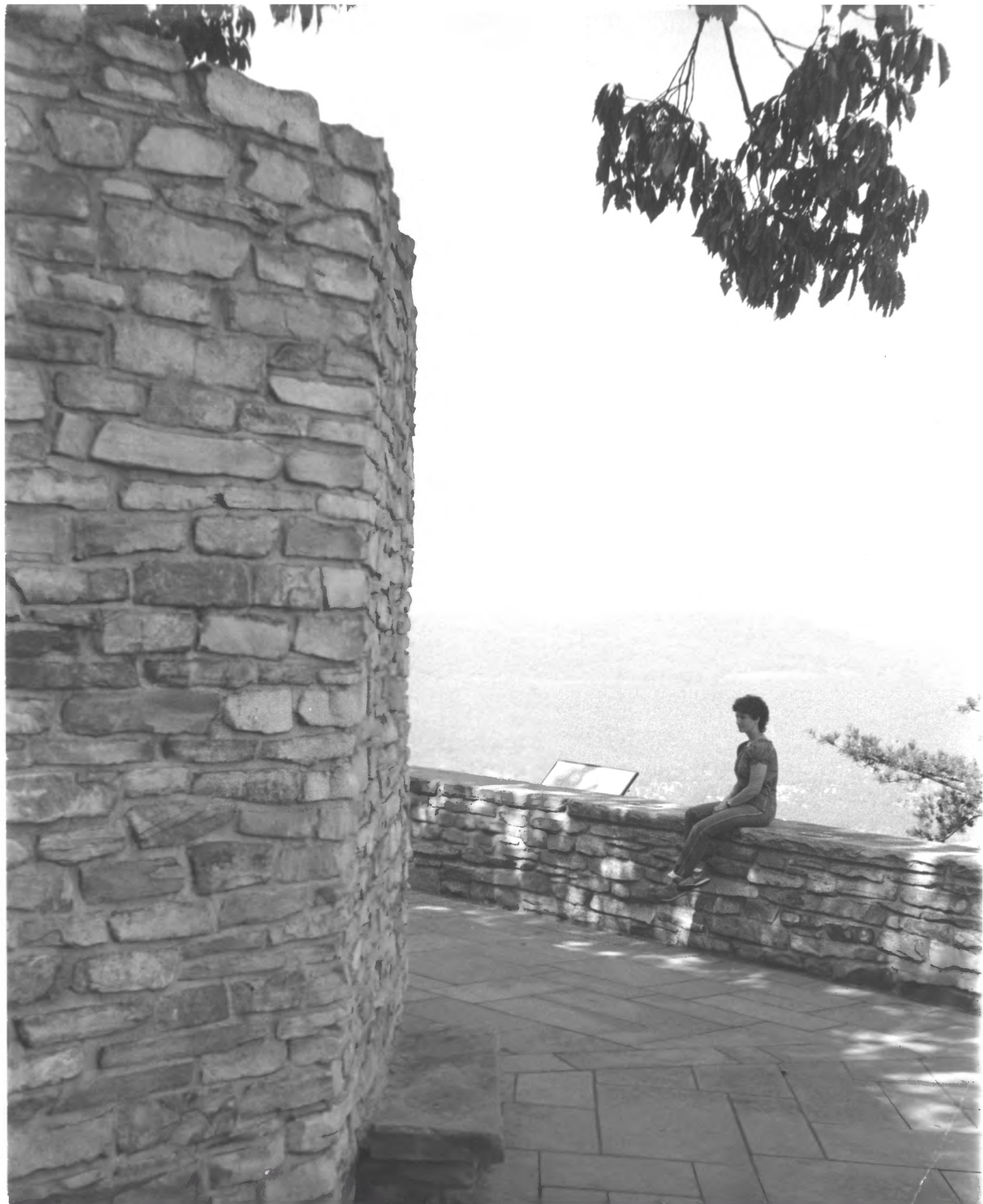
Lookout Mountain, TN

Photographer - Robert Guthrie

Date - 10/17/83

Negative - Chick-Chatt NMP

View - West



OCHS MUSEUM - POINT PARK

Lookout Mountain, TN

Photographer - Robert Guthrie

Date - 10/17/83

Negative - Chick-Chat NMP

View - Northwest - Terrace of Museum with
Elder Mountain in background



LOOKOUT MOUNTAIN - POINT PARK
Chattanooga, TN

CRAVENS HOUSE

Photographer - William Whiteside

Date - 1974

Negative - Chick-Chatt NMP

View - Northeast



STATUE OF A SOLDIER HOLDING A FLAG

PLAQUE ON THE MONUMENT BASE

INFORMATIONAL PLAQUE IN THE FOREGROUND

New York Monument near Cravens House
Lookout Mountain, TN
Chickamuaga and Chattanooga NMP
National Park Service Dec. 1974
Neg filed Chick/Chatt NMP
Looking east.