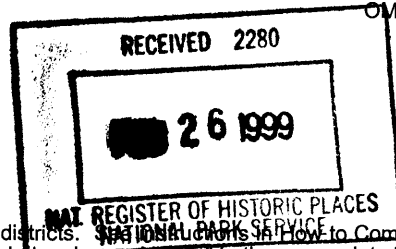


United States Department of the Interior
National Park Service

NATIONAL REGISTER OF HISTORIC PLACES
REGISTRATION FORM



372

This form is for use in nominating or requesting determinations for individual properties and districts. **Instructions: How to Complete the National Register of Historic Places Registration Form (National Register Bulletin 16A).** Complete each item by marking "x" in the appropriate box or by entering the information requested. If any item does not apply to the property being documented, enter "N/A" for "not applicable." For functions, architectural classification, materials, and areas of significance, enter only categories and subcategories from the instructions. Place additional entries and narrative items on continuation sheets (NPS Form 10-900a). Use a typewriter, word processor, or computer, to complete all items.

1. Name of Property

historic name BELLEVIEW SCHOOL

other names/site number BELLEVIEW CITY HALL/MR2651

2. Location

street & number 5343 S.E. ABSHIER BOULEVARD N/A not for publication

city or town BELLEVIEW N/A vicinity

state FLORIDA code FL county MARION code 083 zip code 34420

3. State/Federal Agency Certification

As the designated authority under the National Historic Preservation Act, as amended, I hereby certify that this nomination request for determination of eligibility meets the documentation standards for registering properties in the National Register of Historic Places and meets the procedural and professional requirements set forth in 36 CFR Part 60. In my opinion, the property meets does not meet the National Register criteria. I recommend that this property be considered significant nationally statewide locally. (See continuation sheet for additional comments.)
Judith L. Pettif, DSHPO 2-18-99
Signature of certifying official/Title Date
Florida State Historic Preservation Officer, Division of Historical Resources
State or Federal agency and bureau

In my opinion, the property meets does not meet the National Register criteria. (See continuation sheet for additional comments.)

Signature of certifying official/Title Date

State or Federal agency and bureau

4. National Park Service Certification

I hereby certify that the property is:
 entered in the National Register
 See continuation sheet
 determined eligible for the National Register
 See continuation sheet.
 determined not eligible for the National Register
 See continuation sheet.
 removed from the National Register.
 other, (explain) _____

Edson H. Beall
Signature of the Keeper
Date of Action 3/25/99

5. Classification

Ownership of Property

(Check as many boxes as apply)

- private
- public-local
- public-State
- public-Federal

Category of Property

(Check only one box)

- buildings
- district
- site
- structure
- object

Number of Resources within Property

(Do not include any previously listed resources in the count)

Contributing	Noncontributing	
2	1	buildings
0	0	sites
0	0	structures
0	0	objects
2	1	total

Name of related multiple property listings

(Enter "N/A" if property is not part of a multiple property listing.)

N/A

Number of contributing resources previously listed in the National Register

0

6. Function or Use

Historic Functions

(Enter categories from instructions)

EDUCATION:School

Current Functions

(Enter categories from instructions)

GOVERNMENT:City Hall

7. Description

Architectural Classification

(Enter categories from instructions)

LATE 19TH & 20TH CENTURY REVIVALS: Mission/
Spanish Colonial Revival

Materials

(Enter categories from instructions)

foundation Stucco
walls Stucco
roof Fiberglass Shingles
other Tower: Barrel Tiles

Narrative Description

(Describe the historic and current condition of the property on one or more continuation sheets.)

8. Statement of Significance

Applicable National Register Criteria

(Mark "x" in one or more boxes for the criteria qualifying the property for National Register listing.)

- A** Property is associated with events that have made a significant contribution to the broad patterns of our history.
- B** Property is associated with the lives of persons significant in our past.
- C** Property embodies the distinctive characteristics of a type, period, or method of construction or represents the work of a master, or possesses high artistic values, or represents a significant and distinguishable entity whose components lack individual distinction.
- D** Property has yielded, or is likely to yield information important in prehistory or history.

Criteria Considerations

(Mark "x" in all the boxes that apply.)

Property is:

- A** owned by a religious institution or used for religious purposes.
- B** removed from its original location.
- C** a birthplace or grave.
- D** a cemetery.
- E** a reconstructed building, object, or structure.
- F** a commemorative property.
- G** less than 50 years of age or achieved significance within the past 50 years

Narrative Statement of Significance

(Explain the significance of the property on one or more continuation sheets.)

9. Major Bibliographical References

Bibliography

Cite the books, articles, and other sources used in preparing this form on one or more continuation sheets.)

Previous documentation on file (NPS):

- preliminary determination of individual listing (36 CFR 36) has been requested
- previously listed in the National Register
- previously determined eligible by the National Register
- designated a National Historic Landmark
- recorded by Historic American Buildings Survey

- recorded by Historic American Engineering Record

Areas of Significance

(Enter categories from instructions)

- Architecture _____
- Community Planning _____
- Education _____
- Politics and Government _____
- Social History _____
- _____
- _____

Period of Significance

1928-1949

Significant Dates

1928

1965

Significant Person

N/A

Cultural Affiliation

N/A

Architect/Builder

Architect: Hosford, E. C.

Builder: Smith Alfred W.

Primary location of additional data:

- State Historic Preservation Office
- Other State Agency
- Federal agency
- Local government
- University
- Other

Name of Repository

Bellevue School/City Hall
Name of Property

Marion County, Florida
County and State

10. Geographical Data

Acreeage of Property Approximately 7.6 acres

UTM References

(Place additional references on a continuation sheet.)

1	1 7	3 9 6 8 4 0	3 2 1 4 9 4 0	3									
	Zone	Easting	Northing		Zone	Easting	Northing						
2				4									

See continuation sheet

Verbal Boundary Description

(Describe the boundaries of the property on a continuation sheet.)

Boundary Justification

(Explain why the boundaries were selected on a continuation sheet.)

11. Form Prepared By

name/title Joyce E. Cusick, Consultant; Gary V. Goodwin, Historic Preservation Planner
organization Bureau of Historic Preservation date February, 1999
street & number R.A. Gray Building, 500 S. Bronough Street telephone (850) 487-2333
city or town Tallahassee state Florida zip code 32399-0250

Additional Documentation

Submit the following items with the completed form:

Continuation Sheets

Maps

- A **USGS map** (7.5 or 15 minute series) indicating the property's location.
- A **Sketch map** for historic districts and properties having large acreage or numerous resources.

Photographs

Representative **black and white photographs** of the property.

Additional items

(check with the SHPO or FPO for any additional items)

Property Owner

(Complete this item at the request of SHPO or FPO.)

name City of Bellevue
street & number 5343 S. E. Abshier Boulevard telephone (352)-245-0173
city or town Bellevue state Florida zip code 34420

Paperwork Reduction Act Statement: This information is being collected for applications to the National Register of Historic Places to nominate properties for listing or determine eligibility for listing, to list properties, and amend listings. Response to this request is required to obtain a benefit in accordance with the National Historic Preservation Act, as amended (16 U.S.C. 470 *et seq.*).

Estimated Burden Statement: Public reporting burden for this form is estimated to average 18.1 hours per response including time for reviewing instructions, gathering and maintaining data, and completing and reviewing the form. Direct comments regarding this burden estimate or any aspect of this form to the Chief, Administrative Services Division, National Park Service, P.O. Box 37127, Washington, DC 20013-7127; and the Office of Management and Budget, Paperwork Reductions Projects (1024-0018), Washington, DC 20503.

**United States Department of the Interior
National Park Service**

**NATIONAL REGISTER OF HISTORIC PLACES
CONTINUATION SHEET**

Section number 7 Page 1

**BELLEVIEW SCHOOL/CITY HALL
Bellevue, Marion County, Florida**

SUMMARY

Bellevue School/City Hall is located at 5343 SE Abshier Boulevard, in the City of Bellevue, Marion County, Florida, on Lot 4 of Block 61, in the NE 1/4 of Section 36, Township 16 South, Range 22 East. Constructed in 1928, the one story, Mediterranean Revival style, stuccoed brick building has Spanish Eclectic and Mission style influences. The Bellevue School/City Hall retains its original compound (H) exterior plan, and no additions or alterations in the size or configuration of the original structure have been made to the building.

SETTING

The City of Bellevue, first settled 1884, is located in Marion County just south of Ocala, the county seat. Bellevue currently has a population of 3,463 inhabitants. SE Abshier Boulevard or Highway 441/ 301/ 27, the main thoroughfare through the City, is also known as the Dixie Highway, and historically as the Old Wire Road. The main commercial area of Bellevue is situated along this busy highway. Businesses line both sides of the street. Large oak and sycamore and other trees form a canopy along the frontage of Lot 4 and the five lane, paved SE Abshier Boulevard. More large oaks and tall long leaf, yellow pines overhang the west side of the 1928 Bellevue School/City Hall and provide shade for the paved parking area on the south side (front elevation) of the building. A grassy slope sweeps down and northward behind the rear parking area and on the west side of Bellevue School/ City Hall. (Photos 3,4, and 5)

A covered walkway leads from the rear entrance of Bellevue School/City Hall to a one story masonry vernacular (concrete block) cafeteria/storage building built around 1949. (Photo 6) West of the paved front parking area and adjacent to the highway is a (c1935) noncontributing frame vernacular SCL Railroad Depot that was moved to this site in 1982 to serve as an office for the Bellevue Chamber of Commerce. (Photo 7) A porch was also added after the building was moved to the site.

PHYSICAL DESCRIPTION OF CONTRIBUTING RESOURCES

School

Exterior

Bellevue School/ City Hall, is located in a prominent position highly visible to passersby, with the front entrances (two) facing southwest. (Photo 1) The building exhibits high style in the form of the Spanish Eclectic and Mission influences, reflecting the importance given to education during the prosperity of the 1920s in

**United States Department of the Interior
National Park Service**

**NATIONAL REGISTER OF HISTORIC PLACES
CONTINUATION SHEET**

Section number 7 Page 2

**BELLEVUE SCHOOL/CITY HALL
Bellevue, Marion County, Florida**

Bellevue and Marion County. (Photo 2) It has a compound (H) shaped ground plan, with a rectangular main block and stepped forward and back west and east wings. A cross gabled roof over the main block intersects front gabled roofs over the west and east wings. The original deteriorated, asphalt, interlocking roof shingles were replaced by fiberglass shingles in 1989. Stuccoed masonry columns rise above the shaped parapets of both wings. (Photo 3) Shaped parapets (Mission style) rise above the front and rear gable ends of the west wing and the front of the east wing. There is a chimney concealed in the column on the southwest corner of the west wing.

The arched front entrance to the west wing is protected by a front gabled overhang supported by stuccoed masonry columns. (Photo 4) There is a quatrefoil shaped vent on the front gable end of the west wing and round vents on the rear gable end of the west wing and both gable ends and of the east wing. (Photo 4) The west elevation entrance to the west wing and the east wing entrance also feature front gabled overhangs supported by boxed wood, half columns over masonry bases. A concrete platform/outdoor stage was erected in 1989, near but not touching the rear of the west (auditorium) wing. (Photo 5) The gabled entrance overhang of the rear elevation of the east wing is supported by iron pipes. A tower element with shaped parapets on its gable roof has the original barrel tiles and three arched louvered, vented openings on the front and rear elevations and one opening on each side elevation. (Photo 9) The base of the tower contains an arched arcade entrance to the main block with replacement entrance landings and steps. (Photo 10)

The fenestration emphasizes the rectangular massing of the main block with a ribbon of five windows, with 1 set paired and 2 single windows, all six over six paned windows, on the front elevation, and two ribbons of five windows on the rear elevation, separated by paired windows. (Photo 11) The west and east wings have single windows. (Photos 4, 5 and 11)

Interior

The interior of the Bellevue School was adapted for use as offices and Commission Chambers/Auditorium/storage, for the City of Bellevue, which acquired the building in 1965. The 3rd and 4th grade classroom space in the east wing is now used as a Commission Room with a raised platform where the Commission members are seated (See also 1965 - 1995 Floor plan). The floor plans of the west wing (auditorium), main building, and east wing are rectangular. All load bearing walls were maintained, as most of the Bellevue School classrooms were partitioned to accommodate the adaptive reuse of the Building for Bellevue City Hall offices and the Police Department. Short entries with double doors were located inside the main entrance and east wing entrance. (Photo 12)

**United States Department of the Interior
National Park Service**

**NATIONAL REGISTER OF HISTORIC PLACES
CONTINUATION SHEET**

Section number 7 Page 3

**BELLEVIEW SCHOOL/CITY HALL
Bellevue, Marion County, Florida**

The original wood floors with wide baseboards extend throughout the building, with wide moldings surrounding interior door openings of the corridors and school rooms, commission room and offices. A north/south corridor crosses the main corridor in the east wing. (Photo 13) An office and large classrooms opened off the main corridors, with a small area in the rear of the east wing which served as a cafeteria until the annex was built around 1949. (see 1928 - 1965 Floor plan).

The Bellevue School auditorium was used for storage by the City of Bellevue until the 1995 restoration/renovation. Originally, the west wing/auditorium contained an entry area with storage closets and a stairway to a crawl space below. Also a single door opening with wide moldings at each side led into the large rectangular auditorium. Now, double doors connect the auditorium to the full length east/west corridor with load bearing walls, of the main building and east wing and to the exterior east exit of the east wing. (Photo 15) The crawl space stairway has been removed. Steps lead to the proscenium and stage. (Photo 16) A sloped wood floor enhances the acoustics in the seating area. A historic double seat from the school auditorium is stored in the basement. (Photo 17) The original 1885 Bellevue School Bell was restored and sits on a base in the southwest corner of the auditorium. Its peal still rings out clearly whenever a former student responds to the urge to hear it once again. The "Crystal Metal Frame Bell" was manufactured by the C.S. Bell Company of Hillsboro, Ohio. (Photo 8)

A partial basement beneath the main building once was accessed by a steep wood stairway from the main corridor. The brick walled basement has 8 foot ceilings and houses the building's mechanical equipment. A small room in the northwest corner contained a large boiler/ heating equipment. The room once had an exit to the outside, but it is now sealed. A deep well in the concrete floor for overflows or drainage remains. (Photo 18)

Alterations

The west elevation entrance to the west wing and the east and rear elevations of the east wing shed roof overhangs were replaced with front gabled overhangs supported by wood columns. The original exterior door openings were maintained except for the west side entrance to the west wing, where the existing door opening was bricked in and stuccoed and a new exterior door opening was installed in an existing window opening. The basement door on the rear (north) elevation was sealed and stuccoed, the stairway to the ground level was removed and the area was filled and graded. A free standing concrete handicapped ramp was installed near the front elevation to permit access to the building in accordance with federal standards and local code requirements. The new ramp was concealed by landscaping and a decorative, low, masonry wall.

**United States Department of the Interior
National Park Service**

**NATIONAL REGISTER OF HISTORIC PLACES
CONTINUATION SHEET**

Section number 7 Page 4

**BELLEVIEW SCHOOL/CITY HALL
Bellevue, Marion County, Florida**

Window openings and ledges were maintained as steel sash, six over six windows were installed in 1995 to replace the original wood sash windows. Sometime previously, window openings in the tower were bricked in to prevent accidents. Also during the restoration/renovation in 1995, partitions were reconfigured for office spaces. The second pair of double doors to the entries at the front arcade entrance of the main building and the east exits were removed. New exterior doors were installed in the existing openings of all exits.

A partition was installed to divide the commission meeting room into a conference room and an office. Baseboard and interior door moldings were restored, and surrounds were maintained with original or duplicated on new openings. The badly damaged interior doors were replaced. The original hard wood floors were restored and covered with commercial grade carpet. All of the wiring and plumbing was replaced and asbestos was removed as the original high ceilings were dropped for space to install heating and air conditioning ducts. (See 1995 to Present Floor plan) The wood steps to the attic were replaced and insulation was installed in the attic.

Cafeteria

The cafeteria/storage annex built around 1949, maintains its original regular ground plan and general exterior appearance. The building was constructed with concrete blocks and has a front gabled roof with exposed rafter tails. Originally the roof was surfaced with interlocking asphalt shingles, which were replaced in 1989 with fiberglass shingles. The entrance overhang on the front or south elevation was replaced in 1995. The original 6 over 6 small pane, wood sash windows remain in place and are in good condition along with the brick window ledges. (Photo 6) The interior has been partitioned for use as storage space.

**United States Department of the Interior
National Park Service**

**NATIONAL REGISTER OF HISTORIC PLACES
CONTINUATION SHEET**

Section number 8 Page 1

**BELLEVIEW SCHOOL/CITY HALL
Bellevue, Marion County, Florida**

SUMMARY

Bellevue School/ City Hall, constructed in 1928 by the Marion County Board of Public Instruction for a grammar school to consolidate many small grammar schools scattered around the area, has local significance under Criterion A in the area of Education. It is significant under Criterion C because with its Mediterranean Revival features it embodies distinctive characteristics of the 1920s period in the area of Architecture. The Bellevue School/City Hall is an example of the importance of education amid the prosperity and development of the 1920s in Bellevue and Marion County, and is the most prominent and significant historic building of the 1920s remaining in the City of Bellevue.

HISTORIC CONTEXT

Limited white settlement in the Bellevue area dates back to the 1842 Armed Occupation Act, when for a small fee, the act permitted 160 acres of land to settlers who were willing to bear arms against the Indians in the unsettled part of the peninsula of Florida. After five years a deed would be issued, providing they had built a house, and cleared and planted five acres.

No battles were fought in the Bellevue area during the Civil War, although local landowners fought with Marion County units in the Confederate Army. Reconstruction years saw a decrease in the large plantations, with their labor intensive crops of sugar cane and cotton, and an increase of citrus groves, especially in South Marion County. Timber and turpentine were the other major industries from the 1860s through the 1880s in the Bellevue area.

Railroads played a major part in the resettlement of Marion County after the war. In the 1850s, David Levy Yulee had built The Florida Railroad Company Line from Fernandina (near the Florida/ Georgia east coast border) through Gainesville to Cedar Key. Tourists coming to enjoy the mild winters increased in 1881, when The Florida Transit Railroad built a line from Waldo to Ocala. Many of the tourists became settlers or annual winter visitors. In 1882, the Peninsula Division extended a line from Ocala south through Bellevue. The Florida Railroad & Navigation Company was organized from the above lines in 1884. The first Bellevue Post Office was established, with Charles A. Babb as Postmaster and Depot Agent in 1884. The mail arrived every evening by train, which also transported local produce to northern markets.

News of the railroad expansion through south Marion County prompted settlers to apply for documents and establish homes and small farms in the Bellevue area. They included: Frank Toney, David E. Stroble, David Johnson, and John F. Pelot. Purchasing land from the farmers, the Marion Land & Improvement Company was incorporated February 19, 1884, to develop the Town of Bellevue. The principal shareholders

**United States Department of the Interior
National Park Service**

**NATIONAL REGISTER OF HISTORIC PLACES
CONTINUATION SHEET**

Section number 8 Page 2

**BELLEVUE SCHOOL/CITY HALL
Bellevue, Marion County, Florida**

(each holding 82 shares) were; C. L. Robinson, from Jacksonville, President; E. W. Agnew, of Ocala, Vice President; Col. John F. Dunn, of Ocala, Treasurer; Rev. H. Woodward, from New Hampshire, Secretary; C. A. Babb, Marion County; and J. H. Foss, Newport, Massachusetts.

The developers gave the new settlement a name sure to attract the northern investors from New England who came as tourists by railroad to enjoy the mild winters and the "beautiful view" of the Bellevue area. Another version says the name came from Belle Pelot, daughter of John Pelot. Lake Lillian, it is believed, was named for Mrs. Foss, wife of one of the shareholders. Settlers from New England, where Bellevue was marketed, built homes in the new town.

Bellevue was incorporated in 1885. Voter registration books opened April 13 - 30 at the "Oasis," the store of Trask and Newman, located at the corner of SE Front and Hames Roads. The first election was held in May of 1885, with 70 votes cast. The officials elected included: Mayor Alfred Stetson; Clerk J. J. Williams; and Aldermen James Penfield, R. C. Ridge, C. A. Babb, W. E. Strong, C. F. Trask, D. J. Fogg, and M. L. Smith. The first Marshall was G. H. Cone. The plat filed on August 18, 1885, for the Town of Bellevue, shows a school located on previous Stroble property.

The Marion County Public School System was organized in January of 1877, under Superintendent Rev. H. C. Martin. M. L. Payne became Superintendent in 1881, holding the office for sixteen years until 1897. In the early years funding was very limited, but allowed the County to provide teachers and textbooks to the many small settlements, towns and small cities. The local Trustees were responsible for providing and maintaining a building suitable for the instruction of area children. The school year varied from three (3) to five (5) months.

By 1884, there were 70 local schools in the Marion County system. Small farms and large plantations flourished on the rich soil of central Marion County. The Bellevue area was growing as well. In 1884, trustees from Bellevue petitioned the county for a school building, but their request was denied due to a lack of available funds.

The Marion Land & Improvement Company donated land on SE Robinson Road to the Town in 1885. The Company built a one story frame building with a gable roof and a steeple with a bell on the land. The Crystal Metal Frame Bell, made by C. S. Bell Co. of Hillsboro, Ohio, called the children to class. Bellevue was listed as No. 43 out of 103 schools in Marion County according to Marion County Board of Public Instruction minutes dated, July 5, 1886. The Marion Land and Improvement Company also donated land to the Town in the park area overlooking Lake Lillian. Some time after 1886, the company built a two room school building, which they referred to as "an educational temple." By 1891, Board Minutes identified 113 schools in the County system with Bellevue, a school for white children, designated as No. 89. A major fire on January

**United States Department of the Interior
National Park Service**

**NATIONAL REGISTER OF HISTORIC PLACES
CONTINUATION SHEET**

Section number 8 Page 3

**BELLEVUE SCHOOL/CITY HALL
Bellevue, Marion County, Florida**

8, 1904, burned the "Bellevue Block," including the Town Hall, Chapel, M. L. & I Company's store and hotel, the Library Reading Room, and several residences.

HISTORIC SIGNIFICANCE

At the end of the school year of 1920-21, Marion County had 56 schools for white children, and 49 schools for colored children, only one meeting state accreditation standards. During the 1920s, a plan developed by the Superintendent to consolidate schools in Marion County reduced the 105 small local schools to 44 large schools serving area children. By 1927, population growth and economic prosperity in Marion County provided funds for four new grammar schools. Bellevue's two room school was so over crowded, (City Hall was again being used for classes), that the Marion County Board of Public Instruction approved the construction of one of four new school buildings to be in Bellevue. Lot 4 of Block 61 was the chosen site, with frontage on the North/South Dixie Highway, providing easy access for area children. The school site was surrounded by small vegetable and poultry farms. The county obtained a deed from J. N. Shedd, a local carpenter, who grew watermelons on the land. The Board accepted the \$30,000 bid from Monroe Chamblis National Bank in Ocala to finance the new Bellevue School, in Special District # 3. The Mediterranean Revival style Bellevue School was designed by Architect, E. C. Hosford and built by Alfred W. Smith.

From the beginning, the Bellevue School played an important role in the community. The auditorium was used for a Home Demonstration display in September, even before classes began in October of 1928. In November, a play called, "The Neighbors," was presented by the Bellevue Players, and an Armistice Day observance was held in the large auditorium.

Trucks carried much of the area's produce to northern markets and use of the railroad diminished. About 1932, Gale's Store near the railroad depot burned along with the post office located there. The post office moved to the intersection of Hwy. 441 and 484, which became the new business district. Across the busy highway from the Bellevue School, a lumber mill operated by J. J. Bottelman employed area people in the 1940s. Growth and development continued along the highway after World War II. In 1950, the Chamber of Commerce was organized to serve the growing business community. The Bank of Bellevue, now South Trust Bank, was built adjacent to Bellevue School on the east side in 1953. State Highway 27/301/441 was widened in the late 1950s. Gradually area businesses located along both sides of the busy highway to form a new business center that served the growing area around and inside the city limits.

The Town of Bellevue became the City of Bellevue in 1965, with 300 registered voters inside the corporate limits. The same year State Road # Alternate 441, 301, 25, or Agnew Avenue, was renamed Abshier

**United States Department of the Interior
National Park Service**

**NATIONAL REGISTER OF HISTORIC PLACES
CONTINUATION SHEET**

Section number 8 Page 4

**BELLEVUE SCHOOL/CITY HALL
Bellevue, Marion County, Florida**

Boulevard within the city limits. A new elementary school was also constructed in 1965, leaving the historic Bellevue School in need of a new owner, and it was advertised for sale by the Board of Public Instruction.

At a special meeting held on May 26, 1965, the council members of the City of Bellevue voted to purchase the 1928 Bellevue School for \$53,200. Located prominently in the center of town, on the main thoroughfare and business district of the City, the commanding Spanish Eclectic Mission Style architecture of the Bellevue School represented the importance of government in the development of the growing City. The Chamber of Commerce used the vacant Bellevue School for offices during the summer of 1965. The deed from the County to the City was dated December 7, 1965. Remodeling of the large classrooms of the 1928 Bellevue School for City Hall and Police Department offices was approved.

Business expansion continued along HWY #441 during the 1970s and 1980s. The SAL railroad depot was moved to Lot 4 in 1982 for use by the Chamber of Commerce. By 1989 the sixty-one year old Bellevue School/City Hall needed a new roof to replace the original asphalt shingles. Wiring and plumbing were also a serious hazard. The auditorium, used for storage because of its deteriorated condition, was restored for use as the Commission Meeting Room. The 1995 restoration/renovation restored the Bellevue School/City Hall to its former glory and prominent focal position as the heart of the City of Bellevue.

ARCHITECTURAL CONTEXT and SIGNIFICANCE

Mediterranean Revival is an eclectic style containing architectural elements with Spanish or Mid-eastern precedents. Found in those states that have a Spanish colonial heritage, Mediterranean Revival broadly defines the Mission, Moorish, Turkish, Byzantine, and Spanish Eclectic revival styles which became popular in the Southwest and Florida. Mediterranean Revival buildings in Florida display considerable Spanish influence. The style was popular during the 1920s, and its use continued after the collapse of the boom and in the 1930s. Identifying features of the style include flat or hip roofs, usually with some form of parapet; ceramic tile roof surfacing; stuccoed facades; entrance porches, commonly with arched openings supported by square columns; casement and double-hung sash windows; and ceramic tile decorations.

The architectural design of the Bellevue School/City Hall includes several notable Spanish Eclectic features. This is exemplified by the rich variety and combination of forms in the building. External elements include: stucco over masonry, curvilinear parapets, and a tile roofed bell tower. The building gives a sense of scale, proportion, and detail that creates an aesthetically pleasing form.

Bellevue School/City Hall is one of the few remaining examples of the 1920s economic prosperity that allowed Marion County to consolidate many small area schools serving a few children, into large central

**United States Department of the Interior
National Park Service**

**NATIONAL REGISTER OF HISTORIC PLACES
CONTINUATION SHEET**

Section number 8 Page 5

**BELLEVIEW SCHOOL/CITY HALL
Bellevue, Marion County, Florida**

buildings that served many area children. The Spanish Eclectic, Mission influenced style grammar school represented the importance of education in Marion County in the 1920s. The large building is highly visible to all who pass through Bellevue and south Marion County on the main thoroughfare of Highway # 441, 301, 27. The history of shared buildings makes it appropriate that the city government should now occupy the historically significant Bellevue School, restored as one of the most important historic buildings in the City of Bellevue.

**United States Department of the Interior
National Park Service**

**NATIONAL REGISTER OF HISTORIC PLACES
CONTINUATION SHEET**

Section number 9 Page 1

**BELLEVIEW SCHOOL/CITY HALL
Bellevue, Marion County, Florida**

BIBLIOGRAPHY

GENERAL HISTORY

“An Act to Incorporate the Tropical Peninsular Florida Railroad Company.” Chapter 3336 - No. 118. 8 March, 1881. Legislature of Florida, The Acts and Resolutions Adopted by The Legislature of Florida At Its Eleventh Session 1881, Under the Constitution of A. D. 1868, Tallahassee: Charles E. Dyke, State Printer, 1881.

“An Act to Provide for the Incorporation of the Settlement of Bellevue in Marion County, Florida, to Allow Certain Persons to Vote upon Incorporations and all Questions Relating to said Town or City Government.” Chapter 3638 - No. 83. 16 February, 1885.” The Acts and Resolutions Adopted by The Legislature of Florida At Its Thirteenth Session 1881, Under the Constitution of A. D. 1868, Tallahassee: Charles E. Dyke, State Printer, 1885.

“Bellevue.” The Ocala Banner, Ocala, Florida: 7 March, 1885, Vol. III, No. 28, NP. 14 March, 1885, Vol III., No. 29, NP. (Microfilm, Central Florida Regional Library, Ocala)

“Bellevue.” Ocala Evening Star, Ocala, Florida: 15 November, 1928, Page 7, Col 4 and 5. (Microfilm, Central Florida Regional Library, Ocala)

“Bellevue.” Ocala Evening Star, Ocala, Florida: 7 September, 1928. NP. (Microfilm, Central Florida Regional Library, Ocala)

“Bellevue Brieflets.” The Ocala Banner, Ocala, Florida: 16 Oct., 23 Oct., 30 Oct., 20 Nov, 1885. (Microfilm, Central Florida Regional Library, Ocala)

Bellevue Directory, Bellevue, Florida: 1911.

Bellevue Directory, Bellevue, Florida: 1919.

“Bellevue’s First Election.” The Ocala Banner, Ocala, Florida: 16 May, 1885, Vol. III, No. 28. (Microfilm, Central Florida Regional Library, Ocala)

“Bellevue Notes.” The Ocala Banner, Ocala, Florida: 18 April, 1885, Vol. III, No. 34, Page 1. (Microfilm, Central Florida Regional Library, Ocala)

**United States Department of the Interior
National Park Service**

**NATIONAL REGISTER OF HISTORIC PLACES
CONTINUATION SHEET**

Section number 9 Page 2

**BELLEVIEW SCHOOL/CITY HALL
Bellevue, Marion County, Florida**

Campbell, Charles W., Jr., The Ocala Banner, Ocala, Florida: 5 March, 1886, Vol. IV, No. 28. Advertisement, NP. (Microfilm, Central Florida Regional Library, Ocala)

City of Bellevue, "The Bellevue School Bell." Pamphlet, Bellevue, Florida: ND.

"List of Public Schools Located." The Ocala Banner, Ocala, Florida: 24 July 1885. NP. (Microfilm, Central Florida Regional Library, Ocala)

"15 Marion County Schools Will Open Doors On Monday." The Ocala Banner, Ocala, Florida: 31 August, 1928. NP. (Microfilm, Central Florida Regional Library, Ocala)

Commissioners, Marion County, Map and History of Marion County, Ocala, Florida: Banner Steam Printing, 1888. (P. K. Yonge Library at UF, PKY 1888)

Florida Railway and Navigation Co., Reorganized as Florida Central and Peninsula R. R. Co., Annual Report To The Railroad Commission Of The State Of Florida, 1889. (Florida State Archives, Box 14, Series 210)

Florida Railway and Navigation, "The Key Line." Florida Railway and Navigation, NC: South Publishing Co., 1885. (Borrowed from the Florida State Library by Ocala Regional Library. Marion County)

Hill, Ralph G. and James H. Pledger, Compilers, The Railroads of Florida, Tallahassee, Florida: 1939. (Florida State Library)

Norton, Charles Ledyard, A Handbook of Florida, NC: Longmans, Green & Co., 1891.

Pettengill, George, Jr. The Story of the Florida Railroad, Boston: The Railway and Locomotive Society, Bulletin #86, Baker Library, 1952. (Florida State Library)

Richards, John L., Florida State Gazetteer and Business Directory, New York, N. Y.: The South Publishing Co., 1886-7, Vol. I. (Borrowed from the Florida State Library by Ocala Regional Library. Ref., Marion County - Cities and Towns)

R. L. Polk and Co.'s, Florida State Gazetteer and Business Directory, New York, N. Y.: The South Publishing Co., 1911-1912. (Borrowed from the Florida State Library by Ocala Regional Library. Ref., Marion County - Cities and Towns)

**United States Department of the Interior
National Park Service**

**NATIONAL REGISTER OF HISTORIC PLACES
CONTINUATION SHEET**

Section number 9 Page 3

**BELLEVUE SCHOOL/CITY HALL
Bellevue, Marion County, Florida**

Sumner, Mrs. R.L., "Bellevue Florida," Escort, Bellevue, FL.: Lithographers, Hames Congrove and Hayes, 1961. Vol.1, No. 6. (Ocala Regional Library)

"Superintendent of Schools Makes Excellent Report." The Ocala Banner, Ocala, Florida: 27 April, 1928. NP. (Microfilm, Central Florida Regional Library, Ocala)

Webb, Wanton S., Historical, Industrial and Biographical Florida, New York: W. S. Webb & Co., Publishers, 1885. Part I. (Florida Collection, State Library)

Woodward, Rev. H., Bellevue New England Colony and Winter Home, Lynn, Massachusetts: Lewis & Winship, Printers, 1886. (Bellevue Library; Florida Collection, State Library; Private Collection, Gene Scroggie)

UNPUBLISHED WORKS

Dept. of Natural Resources/Dept. of Environmental Protection, Tallahassee

US Government Survey Map, 1835, Township 16 S, Range 23 E.

US Government Survey Map, 1843, Township 16 S, Range 22 E.

Prevost, L. M., Deputy Surveyor, Field Notes, 1843.

Washington, H., Deputy Surveyor, Field Notes, 1842.

Florida Tract Books, Vol. 19. Pp., 5, 8, 271, 272.

Spanish Land Grant to John F. Pelot, 1803. (Location, Florida State Archives, Tallahassee)

MARION COUNTY RECORDS

Articles of Incorporation, Settlement of Bellevue, Miscellaneous Book A, April 30, 1885.

Board of Public Instruction, Minutes, 1884, 1886, 1891, 1900, 1905, 1928, 1963, 1964, 1965, 1966.

Deed From The Board of Public Instruction to The City of Bellevue, OR 259, p. 202.

**United States Department of the Interior
National Park Service**

**NATIONAL REGISTER OF HISTORIC PLACES
CONTINUATION SHEET**

Section number 9 Page 4

**BELLEVIEW SCHOOL/CITY HALL
Bellevue, Marion County, Florida**

Hebouiton, S., Census Return for 1855, Marion County, Tallahassee: State of Florida, 1855.

Tax Rolls, 1920, 1922, 1930, 1940, 1950, 1997.

Tax Certificates, 1889-1900

Tax Rolls, 1845, 1867, 1868, 1879. Microfilm

(Location, Florida State Archives, Tallahassee.)

ABSTRACTS PREPARED FROM MARION COUNTY RECORDS

Florida Title and Abstract Corporation, Ocala, Florida: Block 61. Abstract No. 18197, 11 November, 1952.
Page 4,5,7. (Collection, Gene Scroggie, Bellevue, Florida)

Florida Title and Abstract Corporation, Ocala, Florida: Block 63. (Collection, Gene Scroggie, Bellevue, Florida)

National Abstract & Title, Co., Ocala, Florida: Abstract No. 177. 4 October, 1946. (Collection, Gene Scroggie, Bellevue, Florida)

MARION COUNTY MAPS

Aerial Maps, 200 Scale, 1996.

Section Maps, 200 Scale, 1987.

Section 36, Township 16 South, Range 22 East.

Town of Bellevue Plat, Plat Book 15 A, 1885.

Town of Bellevue Plat, Second Part, Plat Book 15 A, 1885.

CITY OF BELLEVIEW RECORDS

An Act to change the name of U.S. Highway #441 as it passes through the city limits of the city of Bellevue, Marion County, Florida, as Abshier Boulevard. June 25, 1965. Chapt. 65-1163, Florida State Legislature.

**United States Department of the Interior
National Park Service**

**NATIONAL REGISTER OF HISTORIC PLACES
CONTINUATION SHEET**

Section number 9 Page 5

**BELLEVIEW SCHOOL/CITY HALL
Bellevue, Marion County, Florida**

An Act/Charter to change the name of The Town of Bellevue to The City of Bellevue. June 25, 1966. Chapt. 65-1261, Florida State Legislature.

Bellevue Library Association, Minutes, 1886-1909.

Building Permit Application. # 2849, Bellevue, Florida: ND.

Bellevue, Town of/ City of, Minutes, 1964, 1965, 1966

Bellevue Workers, Minutes, 1885-1940

Resolution of The Town Council of Bellevue, Florida, Authorizing Purchase of Bellevue School Property From Marion County Board of Public Instruction. May 26, 1965.

Skinner & Associates, Inc., Architects, Engineers & Planners. "Alterations to Bellevue City Hall." Gainesville, Florida. 27 April, 1995.

LETTERS

Payne, M. L., Letter to Miss Nellie C. Stephens, Reddick, Florida: 1926. (Ocala Regional Library)

PERSONAL AND TELEPHONE INTERVIEWS

Eugene Scroggie, Local Historian

STUDENTS THEN TEACHERS AT 1928 BELLEVIEW SCHOOL

Faye Sumner Hatcher, Claire Sumner Streets

STUDENTS AT 1928 BELLEVIEW SCHOOL AND VOLUNTEERS

Vivian Abshier Severance, Earl Abshier, Eloise and Donald Hames, John Frank Pelot, Arthur Sumner, Burt and Geraldine Sumner, Bristow S. and Dooley (Ruth) Hopper, and Roy Abshier.

**United States Department of the Interior
National Park Service**

**NATIONAL REGISTER OF HISTORIC PLACES
CONTINUATION SHEET**

Section number 10 Page 1

**BELLEVIEW SCHOOL/CITY HALL
Bellevue, Marion County, Florida**

BOUNDARY DESCRIPTION

The Bellevue School/City Hall was established on Lot 4, approximately 7.6 acres of a 17.5 Acre parcel containing lots 3 and 4 in Block 61, of the 1885 plat. Lot 4 contains the original 1928 Bellevue School and a Cafeteria annex built around 1949, historic buildings associated with the school. It is bordered by SE Abshier Blvd., Highway 441/ 301/ 27, on the south, a vacant lot on the west, Lot 3, on the north, which contains the Bellevue Police Department, and an access alley and South Trust Bank on the east. (See Site Map)

BOUNDARY JUSTIFICATION

The boundaries incorporate those contributing elements historically associated with the Bellevue School. Lot 3 is excluded because it was farmed or vacant land until 1995 when the City of Bellevue erected a metal building as headquarters for the Bellevue Police Department. In addition, a valuation analysis prepared for the City of Bellevue, valued only the school buildings and Lot 4.

**United States Department of the Interior
National Park Service**

**NATIONAL REGISTER OF HISTORIC PLACES
CONTINUATION SHEET**

Section number PHOTOS Page 1

**BELLEVIEW SCHOOL / CITY HALL
Bellevue, Marion County, Florida**

PHOTOGRAPHIC INVENTORY

1. Aerial view of The Bellevue School, 5343 SE Abshier Boulevard
2. Bellevue, Marion County, Florida
3. Joyce E. Cusick (1959 unknown)
4. 1998 retake of historic photo c. 1959
5. Bellevue City Hall, 5343 SE Abshier Boulevard,
6. Aerial, front elevation and roof camera facing north
7. Photo # 1 of 18

1. The Bellevue School, 5343 SE Abshier Boulevard
2. Bellevue, Marion County, Florida
3. Joyce E. Cusick (historic photographer unknown)
4. 1998 (historic date unknown)
5. Bellevue City Hall, 5343 SE Abshier Boulevard,
6. Front elevation and roof camera facing northwest
7. Photo # 2 of 18

1. The Bellevue School / City Hall, 5343 SE Abshier Boulevard
2. Bellevue, Marion County, Florida
3. Joyce E. Cusick
4. 1998
5. Bellevue City Hall, 5343 SE Abshier Boulevard,
6. Front elevation camera facing northwest
7. Photo # 3 of 18

Items 1-5 are the same for the remaining photographs unless otherwise noted:

6. Front elevation, camera facing north east
7. Photo # 4 of 18

6. Rear and west side elevations, Camera facing south east
7. Photo # 5 of 18

**United States Department of the Interior
National Park Service**

**NATIONAL REGISTER OF HISTORIC PLACES
CONTINUATION SHEET**

Section number PHOTOS Page 2

**BELLEVIEW SCHOOL / CITY HALL
Bellevue, Marion County, Florida**

1. Cafeteria / Storage Building
6. Front and east elevations, camera facing north west
7. Photo # 6 of 18

1. SCL Railroad Depot, 5301 SE Abshier Boulevard
6. Front and west elevations, Camera facing north east
7. Photo # 7 of 18

1. Belleview School Bell, front and base
6. Camera facing south west
7. Photo # 8 of 18

1. Belleview School / City Hall, Bell Tower
6. Exterior, Front elevation, Camera facing north
7. Photo # 9 of 18

6. Arched entrance main building, front elevation, Camera facing north west
7. Photo # 10 of 18

6. Rear elevation, Camera facing south west
7. Photo # 11 of 18

6. Interior, Arched entrance main building, Camera facing south
7. Photo # 12 of 18

6. Interior, Main hallway and offices, Camera facing east
7. Photo # 13 of 18

6. Interior, Auditorium Entrance, Camera facing south
7. Photo # 14 of 18

6. Interior, Auditorium Interior Entrance, Camera facing north
7. Photo # 15 of 18

6. Interior, Auditorium / City Commission Room, Camera facing north
7. Photo # 16 of 18

**United States Department of the Interior
National Park Service**

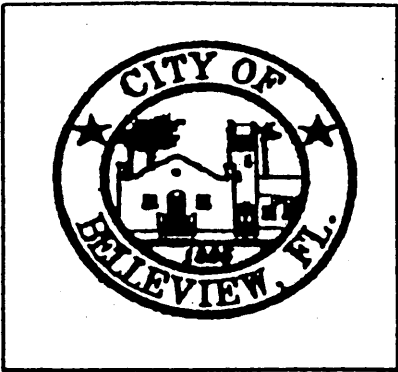
**NATIONAL REGISTER OF HISTORIC PLACES
CONTINUATION SHEET**

Section number PHOTOS Page 3

**BELLEVIEW SCHOOL / CITY HALL
Bellevue, Marion County, Florida**

6. Interior, Auditorium school seats, stored in basement, Camera facing north
7. Photo # 17 of 18

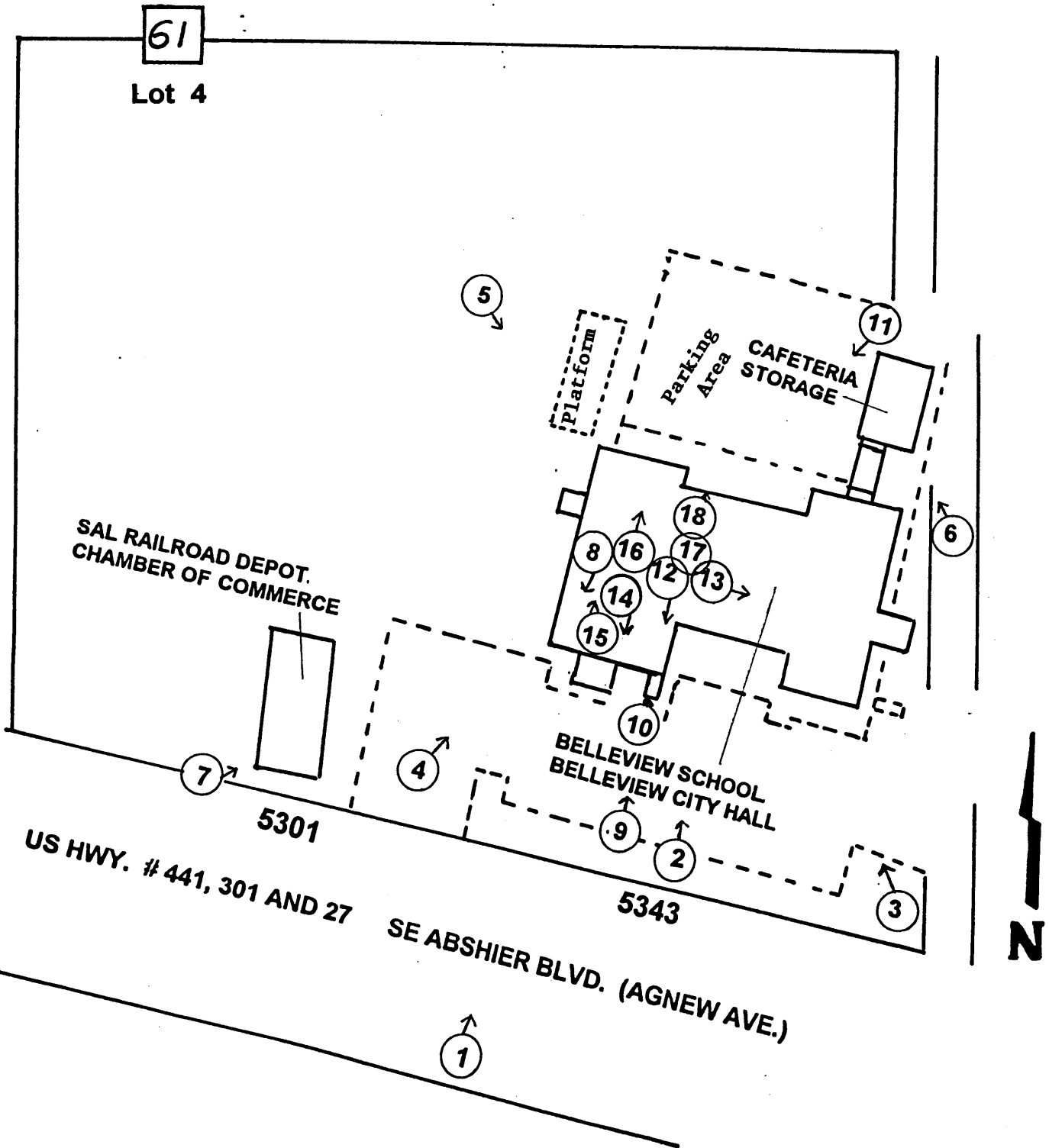
6. Interior, basement, original boiler room, Camera facing north
7. Photo # 18 of 18

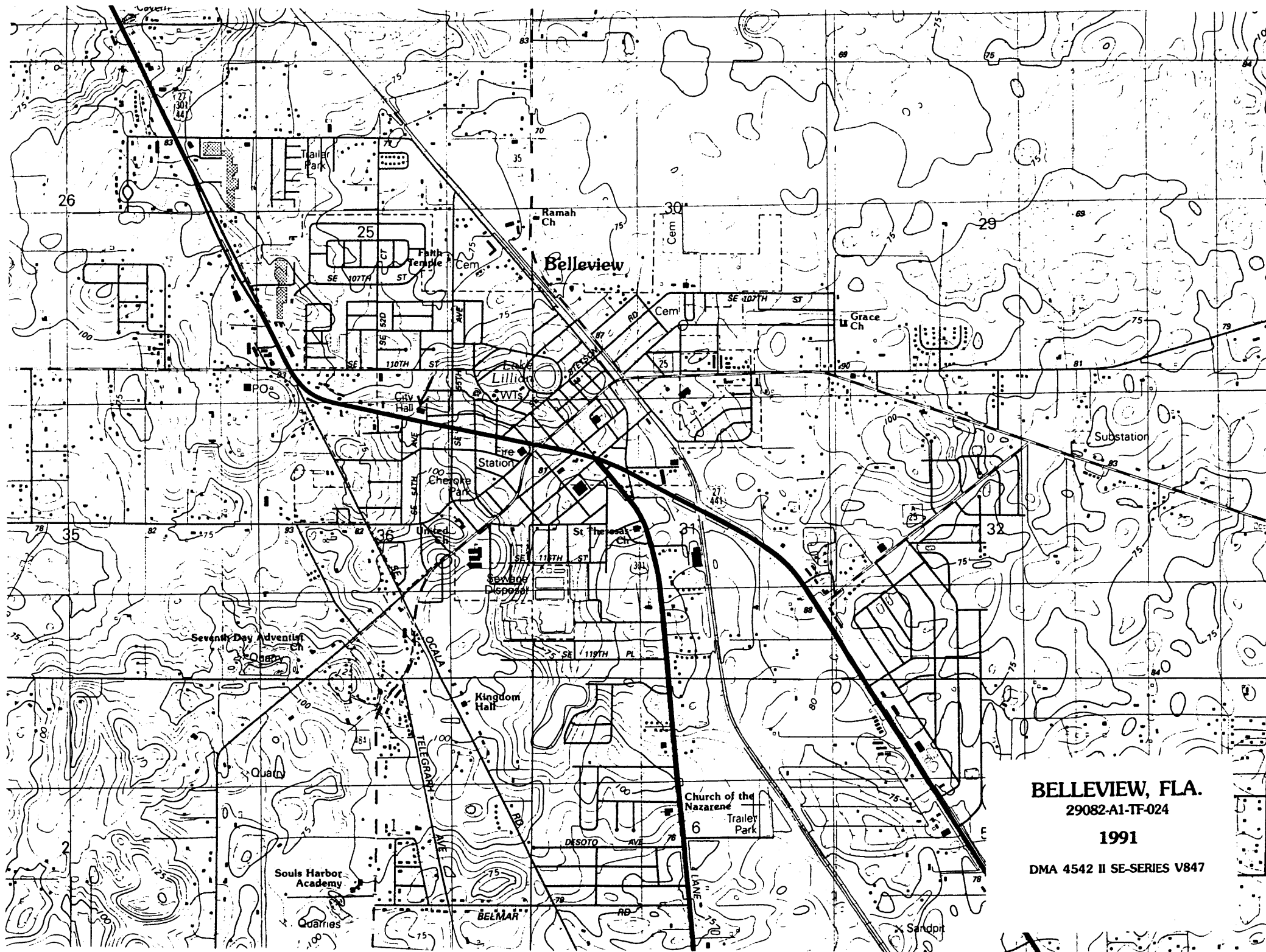


BELLEVIEW SCHOOL BELLEVIEW CITY HALL

Marion County, Florida

PHOTOGRAPHS = ○→





BELLEVIEW, FLA.

29082-A1-TF-024

1991

DMA 4542 II SE-SERIES V847

BELLEVIEW SCHOOL

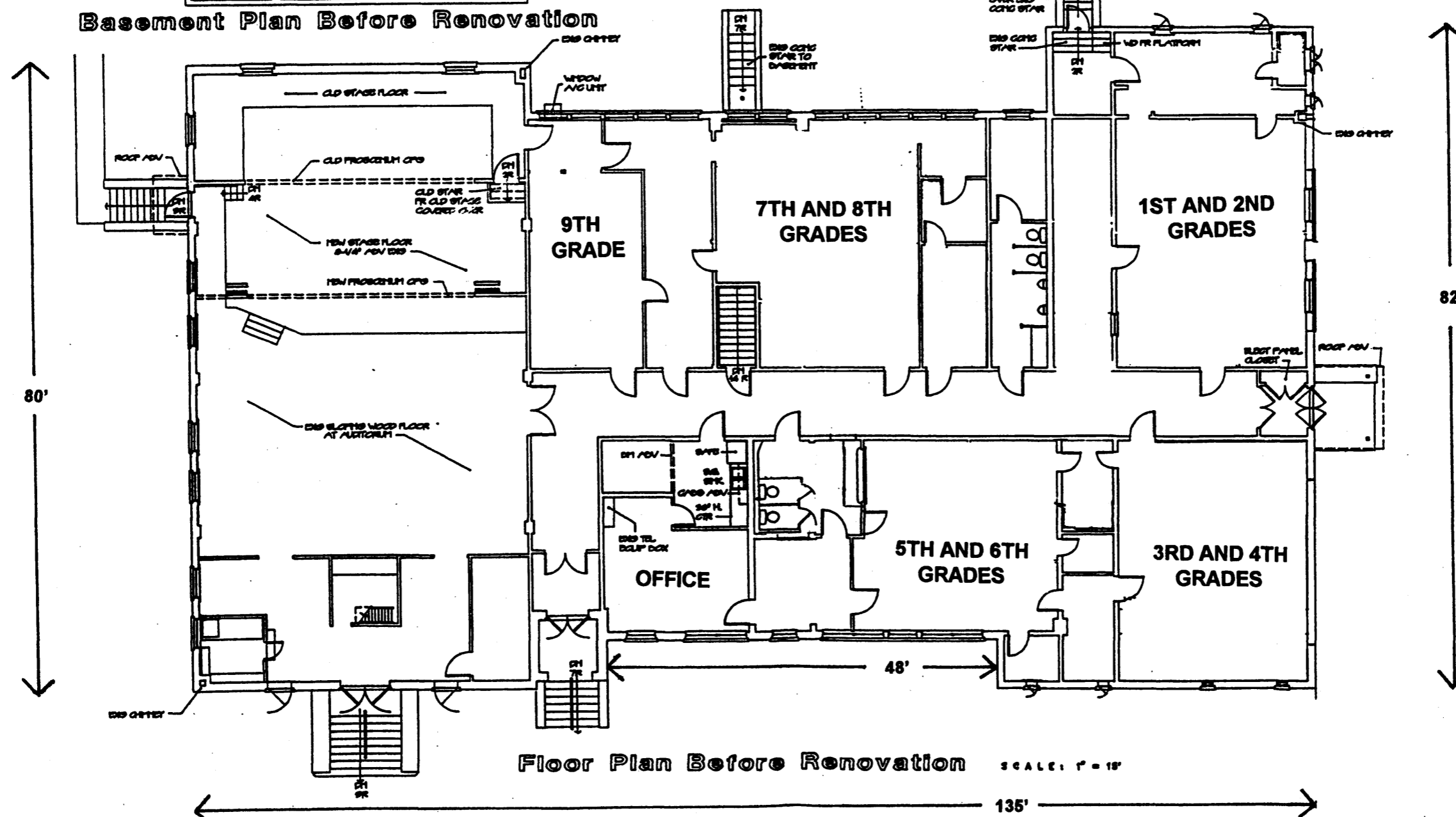
1928 - 1965

CAFETERIA

Existing Annex Building Plan

EXISTING COVERED WALK

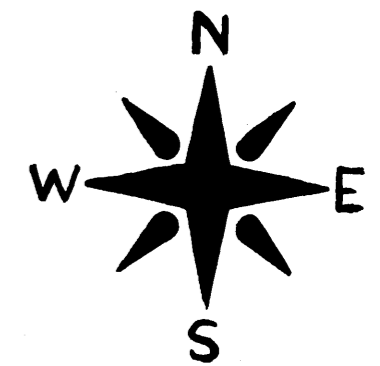
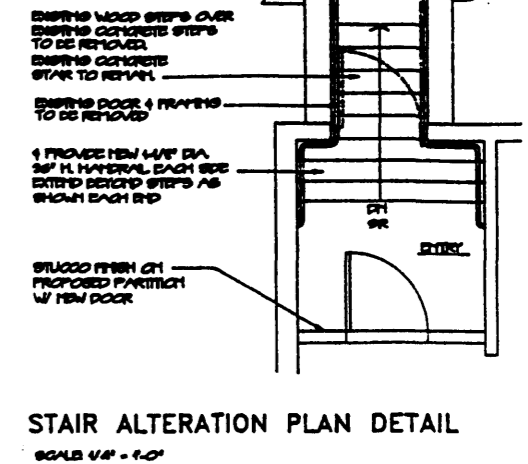
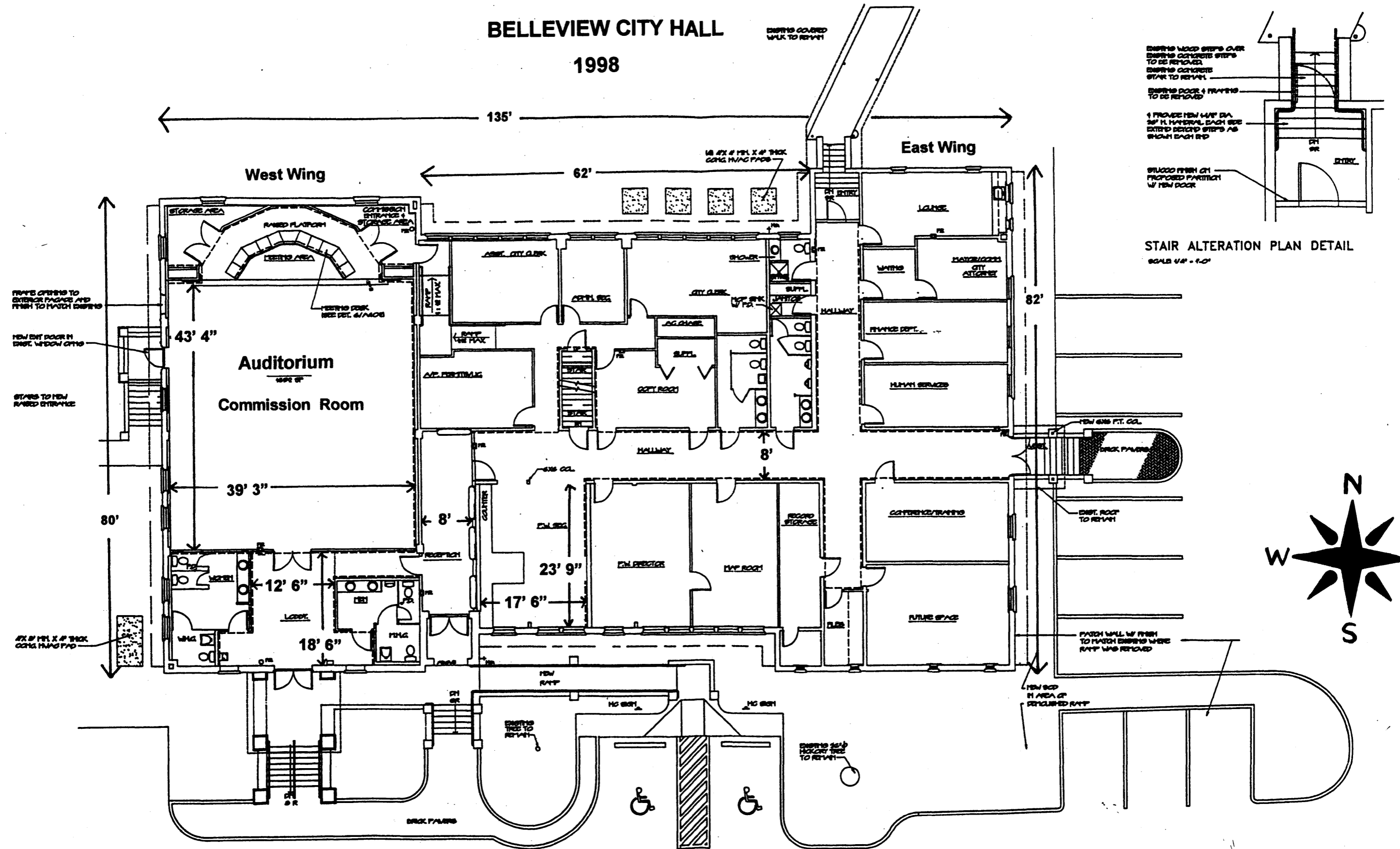
Basement Plan Before Renovation



Floor Plan Before Renovation SCALE: 1" = 10'

DATE	BY	DESCRIPTION	DATE	BY	DESCRIPTION	DRAWN BY	SCALE	DATE	CITY OF BELLEVIEW	3343 S.E. ASHBER BLVD. BELLEVIEW, FLORIDA 34420 PH 904-245-0124 FAX 904-245-6832	TITLE	PROJECT NO.	SHEET NO.
						SWK	AS SHOWN	SEPT. 28, 1997	CITY OF BELLEVIEW Department of Public Works		BELLEVIEW CITY HALL FLOOR PLAN BEFORE RENOVATION		1 of 1

BELLEVIEW CITY HALL 1998



FLOOR PLAN AFTER 1995 RESTORATION / RENOVATION

SCALE: 1" = 18'

DATE	BY	DESCRIPTION	DATE	BY	REVISION	DRAWN BY	SCALE	CITY OF BELLEVIEW	PROJECT NO.	SHEET NO.	
								CITY OF BELLEVIEW Department of Public Works	6343 S.E. ARSHER BLVD. BELLEVIEW, FLORIDA 34420 PH 804-246-0124 FAX 804-246-6532	BELLEVIEW CITY HALL FLOOR PLAN AFTER RENOVATION	1 - 1

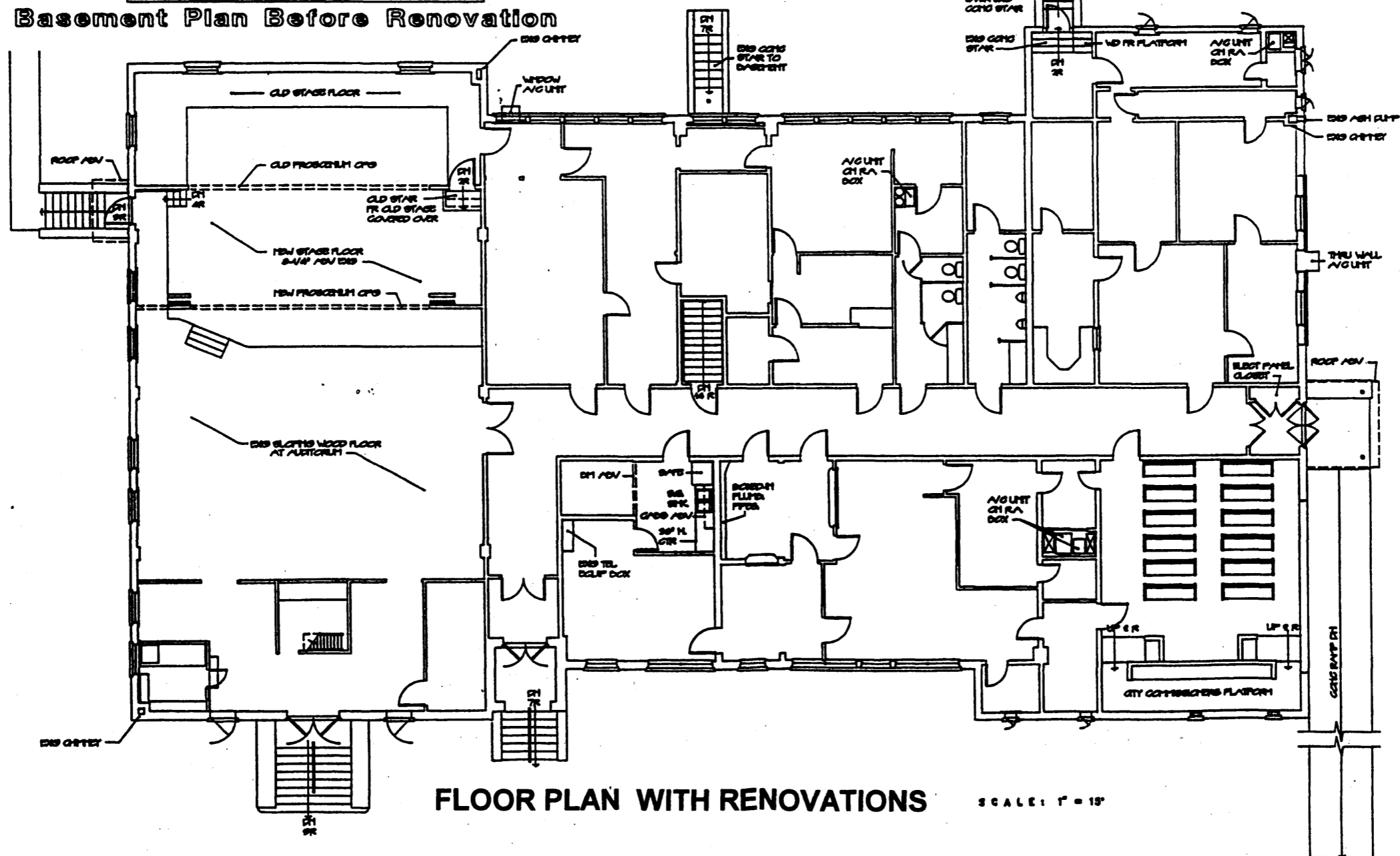
BELLEVUE CITY HALL

1965 - 1995

EXISTING COVERED WALK

Existing Annex Building Plan

Basement Plan Before Renovation



FLOOR PLAN WITH RENOVATIONS SCALE: 1" = 15'

DATE	BY	DESCRIPTION	DATE	BY	REVISION	DESCRIPTION	DRAWN BY	SCALE	AS SHOWN	CITY OF BELLEVUE	6343 S.E. ABBEY BLVD. BELLEVUE, FLORIDA 33420 PH 904-246-0124 FAX 904-246-6832	TITLE	PROJECT NO.	SHEET NO.
										CITY OF BELLEVUE Department of Public Works		BELLEVUE CITY HALL FLOOR PLAN - BEFORE RENOVATION		1 of 1