



Newark Fire
Insurance Company
Newark, N. J.

WALL PAPER
LAPTOP

1. Parish-Paugh House
2. Alameda County Ct
3. Jerry Chaix
4. 7-14-06
5. digital
6. Looking South, room under stairs from front hall, where objects found in and around the house are kept.
7. 001



1. Parish - Paugh House
2. Amador County, CA
3. Jerry Chaix
4. 7-14-06
5. Digital
6. Looking East. Full Front
7. 002



1. Parish - Paugh House

2. Amador County CA

3. Jury Chair

4. 7-14-06

5. digital

6. Looking east. North side of house and
detached kitchen

7. 003



Baugh, William J., Neuse

Amador County, CA

Jerry Chais

7-14-06

Digital

Looking west. Back of house.

Detached kitchen (new) on
right. Enclosed back porch
on left

004



1. Parish - Paugh House
2. Amador County Ca
3. Jerry Chaix
4. 7-14-06
5. digital
6. Looking South. Front of new detached
Kitchen on left, North side of dining room
Center
7. 005



1. Parish - Faugh House
2. Amador County CA
3. Jerry Chair
4. 7-14-06
5. digital
6. Looking East . Front and South side of house
7. 006



1. Parish - Paugh House
2. Amador County CA
3. Jerry Chaix
4. 7-14-06
5. digital
6. Looking west down hall stairs at front door. Front parlor door to the right
7. 007



1. Parish - Paugh House
2. Amador County CA
3. Terry chair
4. 7-14-06
5. digital
6. Looking West. Front wall of front parlor,
showing one of its 3 French doors
7. 008



1. Parish - Paugh House

2. Amador County CA

3. Jerry Chrix

4. 7-14-06

5. digital

6. Looking East. Gothic fireplace and kerosene
light.

7. 009



1. Parish - Paugh House
2. Amador County CA
3. Jerry Chaix
4. 7-14-06
5. digital
6. Looking west. upstairs front bedroom showing
lancet windows
7. 010



1. Parish-Paugh House

2. Amherst County Ct

3. Jerry Chair

4. 7-14-06

5. digital

6. Looking west to front wall of dining room

7. 011



1. Parish - Pough House
2. Amador County Ct
3. Jury Chair
4. 7-14-06
5. digital
6. Looking West. Front of detached Kitchens
7. 012



1. Parish - Paugh House
2. Amador County, CA
3. Jerry Chix
4. 7-14-06
5. digital
6. ~~A~~ Looking North. Front door on right. South
Side French door into the front parlor,
Center. Shows porch and door trim.
7. 013



1. Parish - Paugh House
2. Alameda County CA
3. Jerry Chix
4. 7-14-06
5. digital
6. upstairs landing
2. 014



1. Parish - Pough House
2. Amador County, CA
3. Terry Chix
4. 7-14-06
5. digital
6. Looking North to front parlor door into hallway. showing gothic trim
7. 015



1. Parish - Pough House
2. Amador County, CA.
3. Jerry Chix
4. 7-14-06
5. digital
6. Looking South, detail of stair trim, newell
post and balusters
7. 016



Baugh, William J., House
Amador County, CA

Jerry Chais

7-14-06

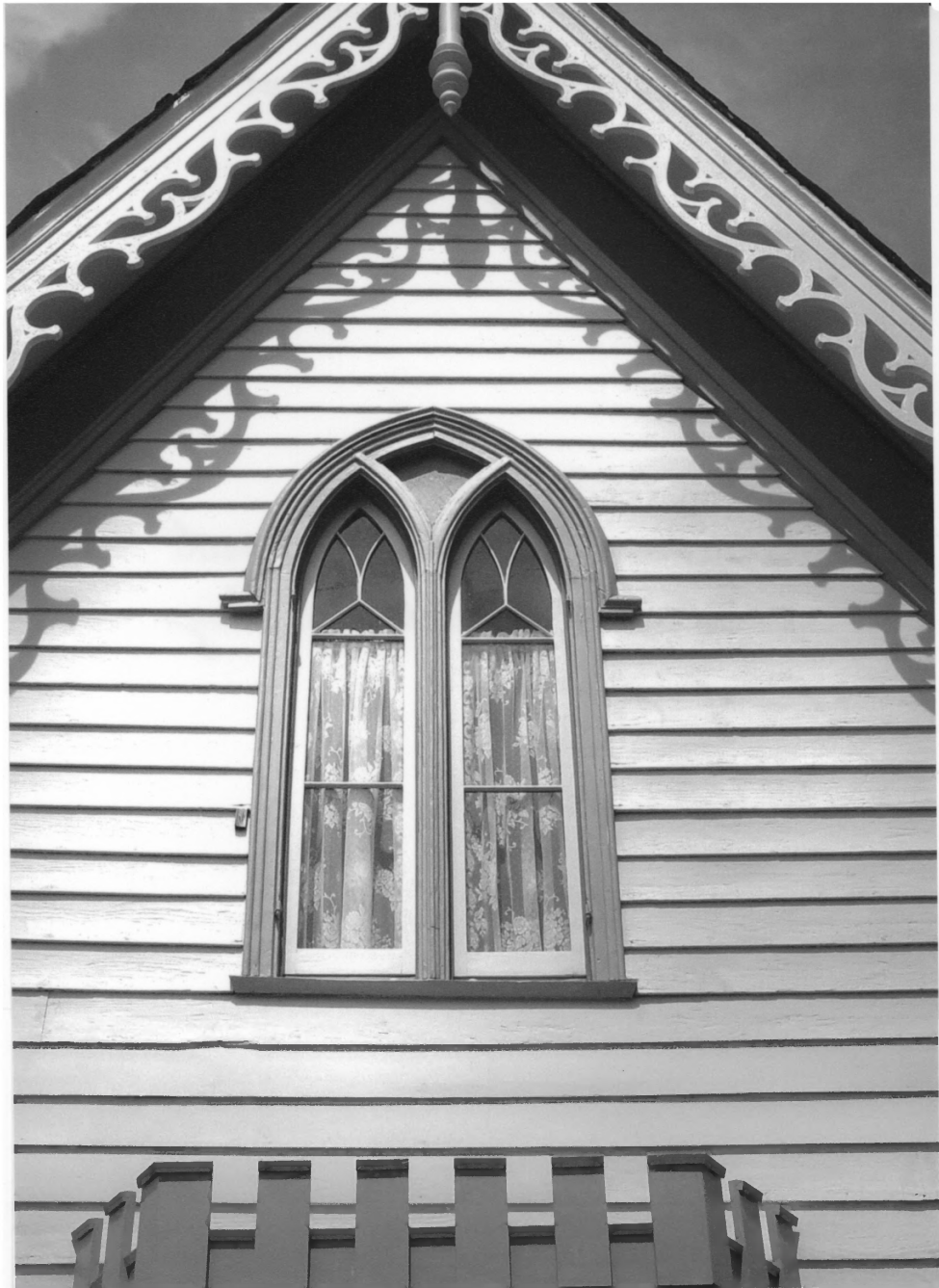
Digital

Looking north. Detail of door
hardware from hall door

017



1. Parish - Paugh House
2. Amador County CA
3. Jerry Chaix
4. 7-14-06
5. digital
6. Looking North upstairs bathroom, originally a bedroom
7. 018



Baugh, William J., House
Amador County, CA

Jerry Chais

7-14-06

Digital

Looking north. Detail of
bargeboard trim, joint, lancet
windows & crenellated bay
roof

019



1. Parish - Paugh House
2. Amherst County, CT
3. Jerry Chaix
4. 7-14-06
5. digital
6. Looking East. Upstairs back bedroom showing door into Attic room.
7. 020



1. Parish - Paugh House
2. Amador County CA
3. Terry Chair
4. 7-14-06
5. digital
6. Looking North. First floor music room with bay. Originally a bedroom.
7. 021



1. Parls - Paugh House
2. Amador County Ct
3. Jerry Chair
4. 7-14-06
5. digital
6. Looking east to the back parlor and into the dining room.
7. 022